

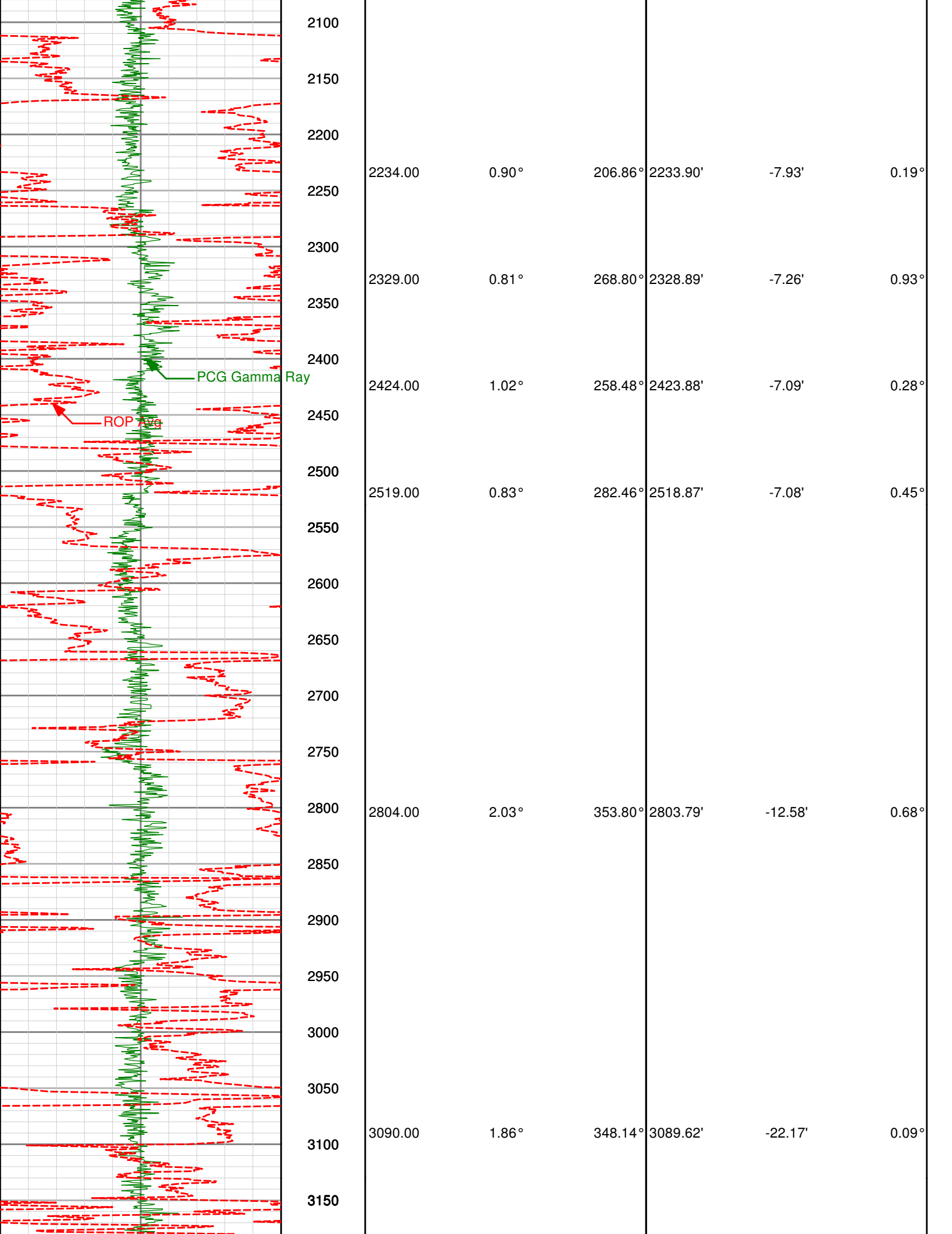
State 10-67 36-1H

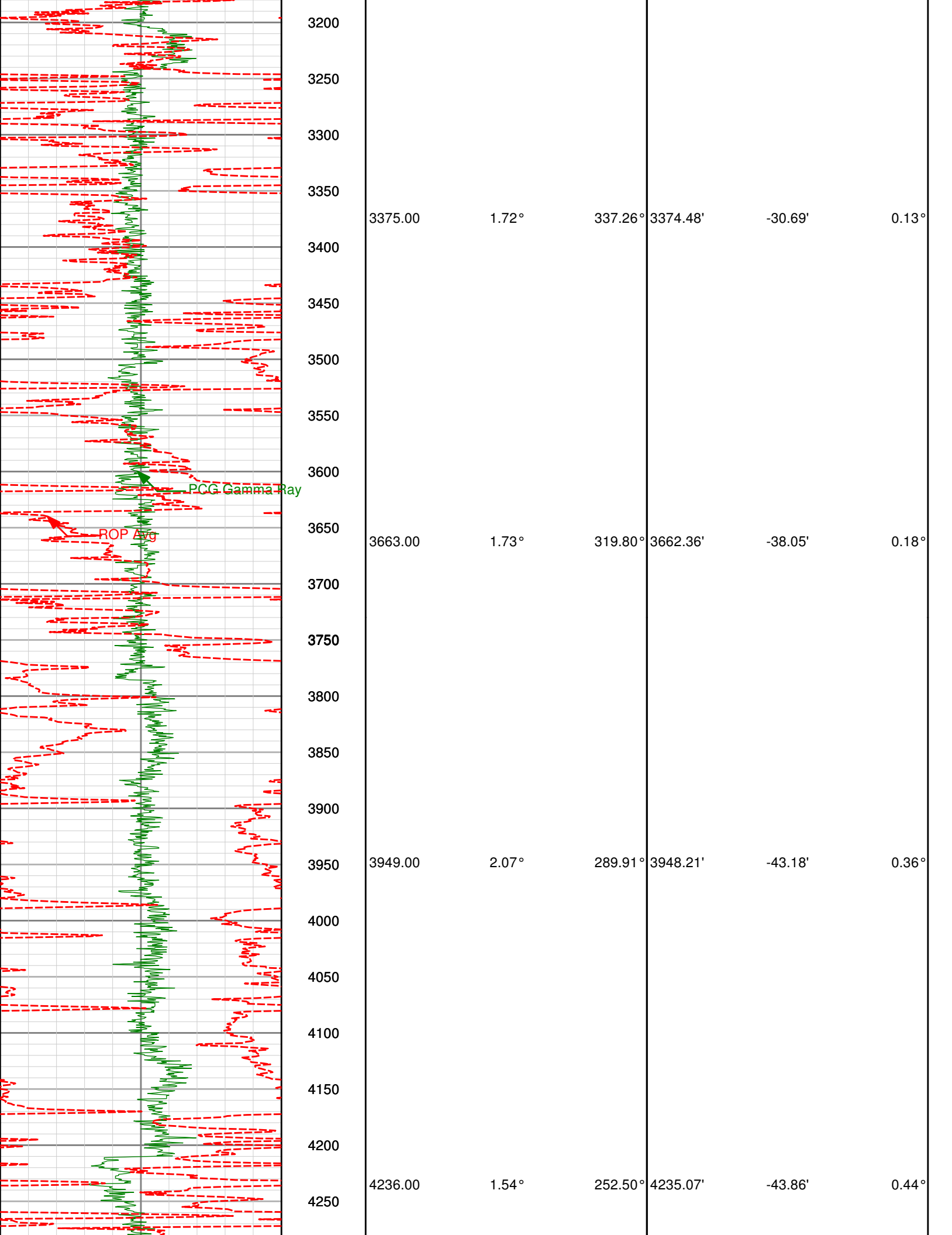
Cyclone 26

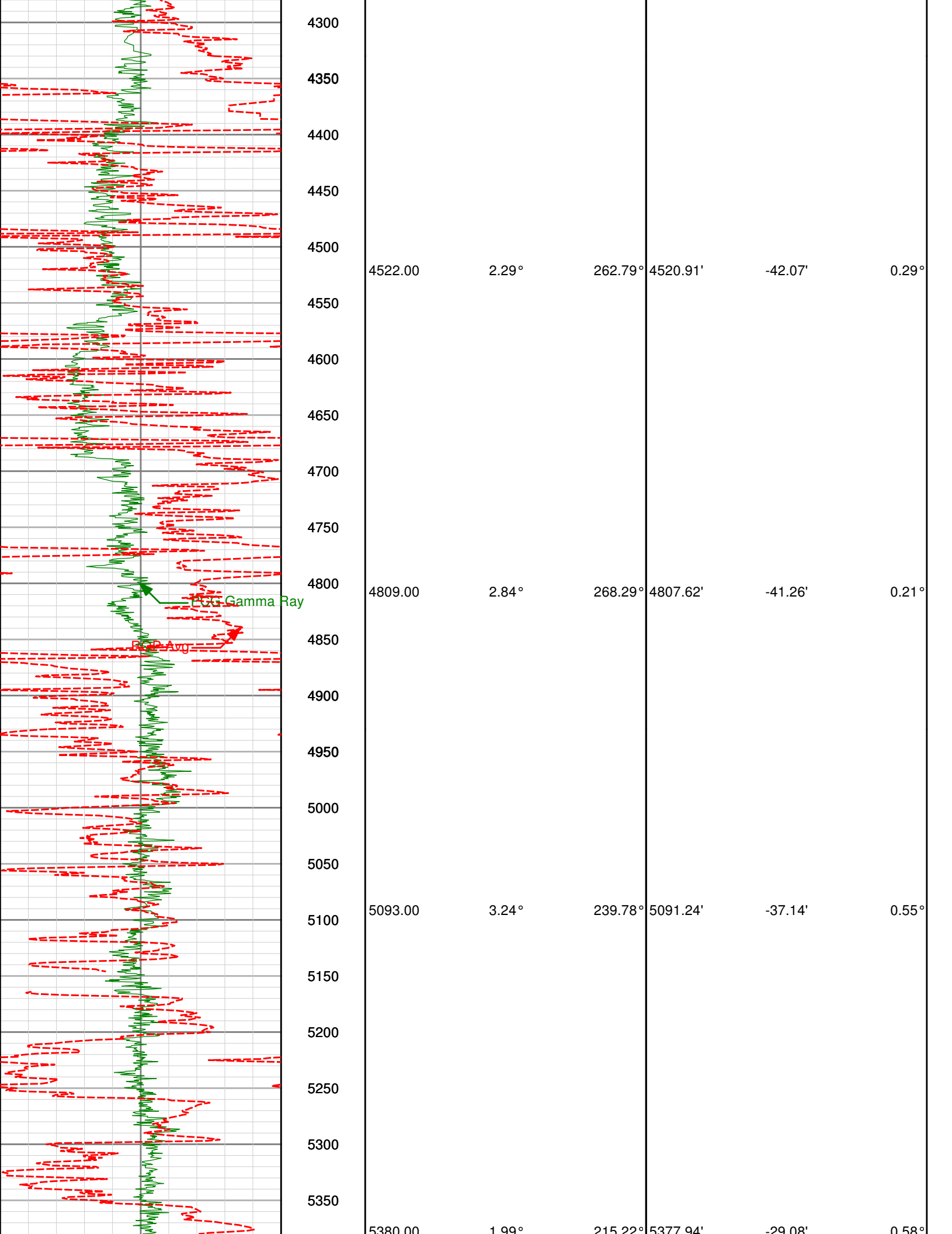
Weld County, CO

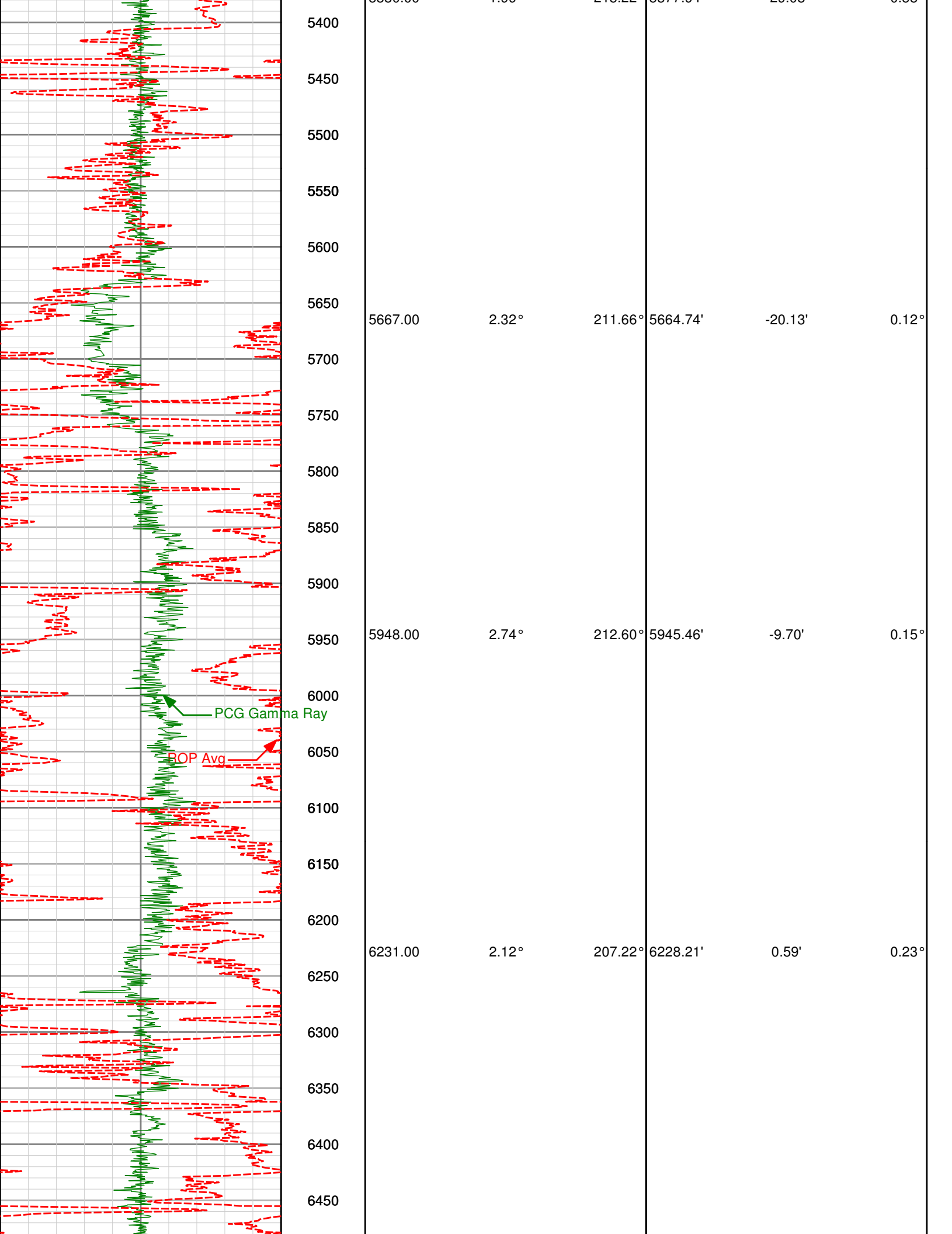
API #: 05-123-31598

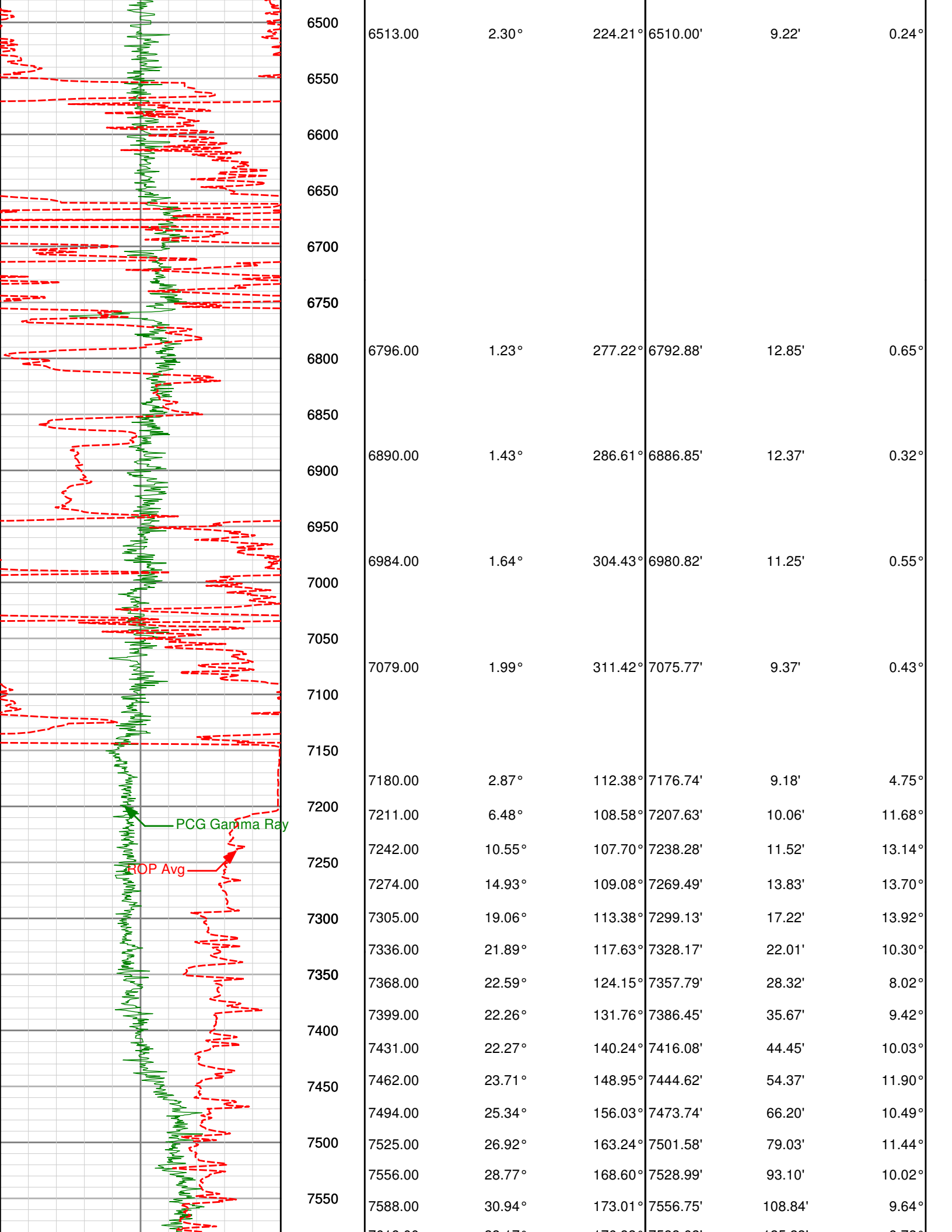
PCG Gamma Ray api		TVD ft	Survey			Survey		
Rate of Penetration feet per hr		1:1200	Depth	Inclination	Azimuth	TVD	Vertical Sec	Dog Leg Sev
		1350						
		1400						
		1450						
		1500	1502.00	0.28°	163.04°	1501.93'	-13.41'	0.72°
		1550	1565.00	0.31°	171.15°	1564.92'	-13.08'	0.08°
		1600						
		1650	1661.00	0.34°	188.81°	1660.92'	-12.54'	0.11°
		1700						
		1750						
		1800						
		1850						
		1900						
		1950	1947.00	0.37°	196.38°	1946.92'	-10.81'	0.02°
		2000						
		2050						











	7600	7619.00	33.17°	176.83°	7583.02'	125.23'	9.72°
		7651.00	35.89°	178.50°	7609.39'	143.36'	9.00°
		7682.00	38.90°	179.20°	7634.01'	162.18'	9.82°
	7650	7714.00	41.91°	178.95°	7658.38'	182.92'	9.42°
		7745.00	45.12°	176.89°	7680.85'	204.25'	11.32°
	7700	7776.00	48.33°	175.11°	7702.10'	226.78'	11.17°
		7808.00	51.87°	175.62°	7722.63'	251.26'	11.12°
		7839.00	54.65°	175.75°	7741.17'	276.04'	8.97°
	7750	7871.00	56.79°	175.61°	7759.19'	302.43'	6.71°
		7902.00	60.37°	173.54°	7775.35'	328.78'	12.89°
		7933.00	63.68°	172.05°	7789.89'	355.97'	11.47°
	7800	7965.00	67.77°	170.88°	7803.05'	384.85'	13.22°
		7996.00	71.50°	170.23°	7813.83'	413.55'	12.18°
		8028.00	73.77°	170.40°	7823.38'	443.74'	7.16°
		8059.00	75.55°	170.60°	7831.58'	473.94'	5.73°
7850		8091.00	77.07°	170.82°	7839.16'	503.63'	4.91°
		8122.00	78.12°	171.02°	7845.54'	533.63'	3.91°
		11860.00	92.99°	179.40°	7808.52'	4268.65'	10.00°
Rate of Penetration		TVD	Survey			Survey	
250 feet per hr 0		ft					
PCG Gamma Ray		1:1200	Depth	Inclination	Azimuth	TVD	Vertical Sec Dog Leg Sev
0 api 250							