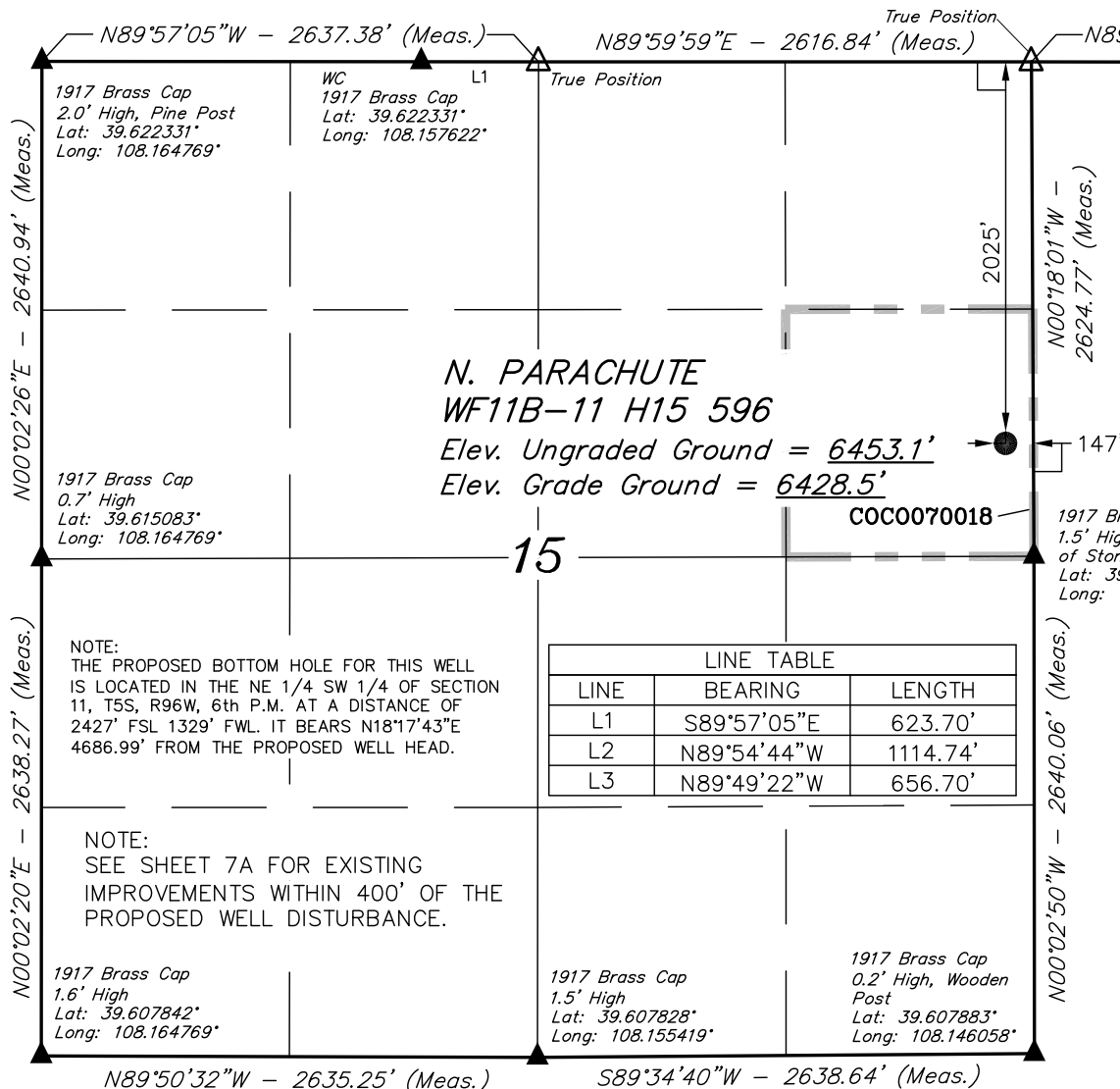


T5S, R96W, 6th P.M.

Encana OIL & GAS (USA) INC.

Well location, N. PARACHUTE WF11B-11 H15 596 (SURFACE LOCATION), located as shown in the SE 1/4 NE 1/4 of Section 15, T5S, R96W, 6th P.M., Garfield County, Colorado.



BASIS OF ELEVATION

SPOT ELEVATION AT THE NORTHWEST CORNER OF SECTION 30, T5S, R95W, 6th P.M. TAKEN FROM THE FORKED GULCH QUADRANGLE, COLORADO, GARFIELD COUNTY, 7.5 MINUTE SERIES (TOPOGRAPHICAL MAP) PUBLISHED BY THE UNITED STATES DEPARTMENT OF THE INTERIOR, GEOLOGICAL SURVEY. SAID ELEVATION IS MARKED AS BEING 5966 FEET.

BASIS OF BEARINGS

BASIS OF BEARINGS IS A G.P.S. OBSERVATION.

Sheet 11 of 11



CERTIFICATE

THIS IS TO CERTIFY THAT THE ABOVE PLAT WAS PREPARED FROM FIELD NOTES OF ACTUAL SURVEYS MADE BY ME OR UNDER MY SUPERVISION AND THAT THE SAME ARE TRUE AND CORRECT TO THE BEST OF MY KNOWLEDGE AND BELIEF.

REGISTERED LAND SURVEYOR  
REGISTRATION NO. 17492  
STATE OF COLORADO

06-22-2011

UINTAH ENGINEERING & LAND SURVEYING  
85 SOUTH 200 EAST - VERNAL, UTAH 84078  
(435) 789-1017

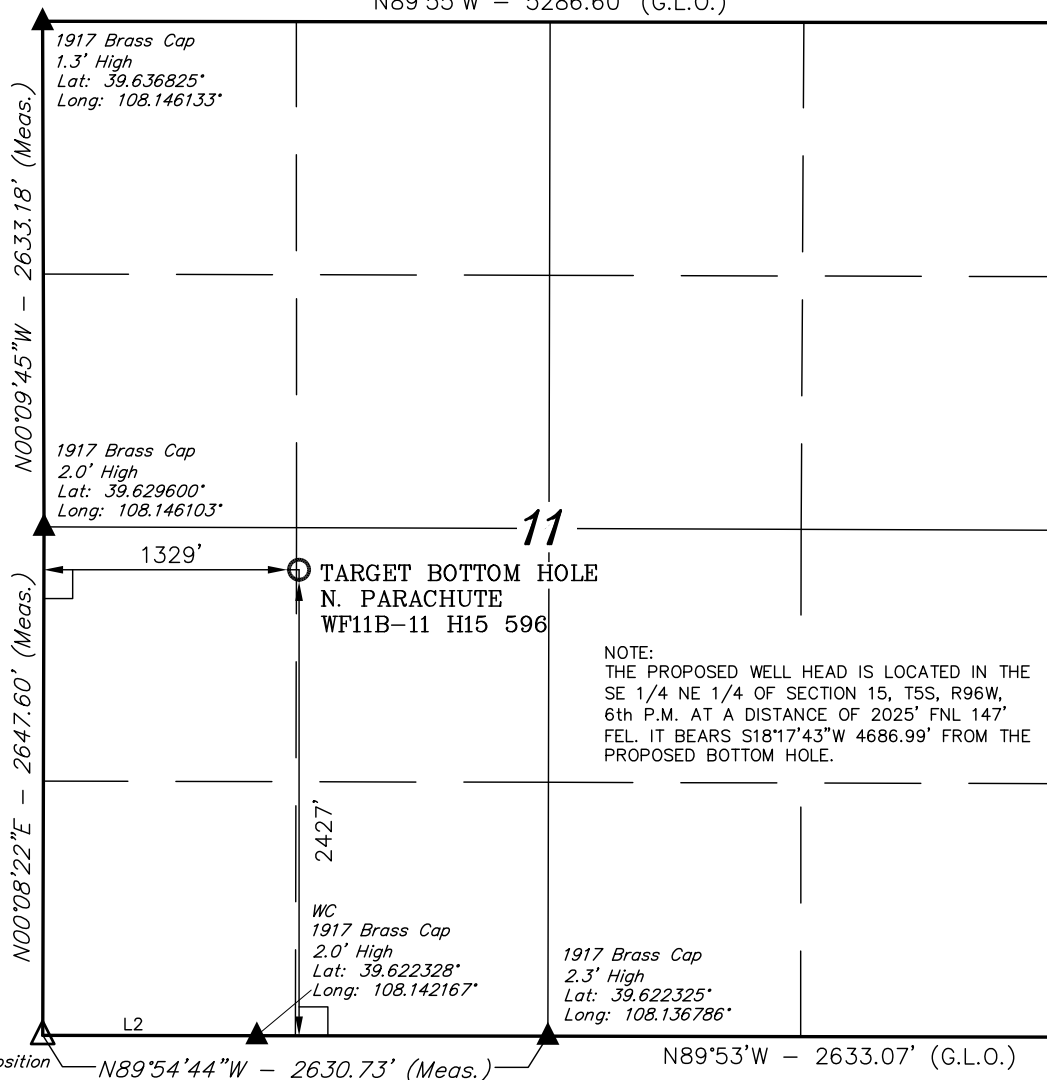
PDOP = 2.9

NAD 83 (SURFACE LOCATION)	
LATITUDE	= 39°37'00.39" (39.616775)
LONGITUDE	= 108°08'47.78" (108.146606)
NAD 27 (SURFACE LOCATION)	
LATITUDE	= 39°37'00.47" (39.616797)
LONGITUDE	= 108°08'45.49" (108.145969)

SCALE 1" = 1000'	DATE SURVEYED: 11-22-10	DATE DRAWN: 06-15-11
PARTY G.O. T.M. D.R.B.	REFERENCES G.L.O. PLAT	
WEATHER COOL	FILE Encana OIL & GAS (USA) INC.	

*T5S, R96W, 6th P.M.*

N89°55'W – 5286.60' (G.L.O.)



**LEGEND:**

- └─ = 90° SYMBOL
- = PROPOSED WELL HEAD.
- ▲ = SECTION CORNERS LOCATED.
- △ = SECTION CORNERS RE-EST.  
(Not Set on Ground)

LINE TABLE		
LINE	BEARING	LENGTH
L2	N89°54'44"W	1114.74'

<b>NAD 83 (TARGET BOTTOM HOLE)</b>	
LATITUDE	= 39°37'44.36" (39.628989)
LONGITUDE	= 108°08'29.00" (108.141389)
<b>NAD 27 (TARGET BOTTOM HOLE)</b>	
LATITUDE	= 39°37'44.45" (39.629014)
LONGITUDE	= 108°08'26.71" (108.140753)

**Encana OIL & GAS (USA) INC.**

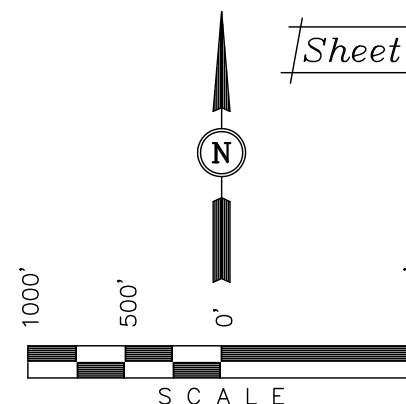
Well location, N. PARACHUTE WF11B-11 H15 596  
(TARGET BOTTOM HOLE), located as shown in the  
NE 1/4 SW 1/4 of Section 11, T5S, R96W, 6th  
P.M., Garfield County, Colorado.

**BASIS OF ELEVATION**

SPOT ELEVATION AT THE NORTHWEST CORNER OF SECTION  
30, T5S, R95W, 6th P.M. TAKEN FROM THE FORKED GULCH  
QUADRANGLE, COLORADO, GARFIELD COUNTY, 7.5 MINUTE  
SERIES (TOPOGRAPHICAL MAP) PUBLISHED BY THE UNITED  
STATES DEPARTMENT OF THE INTERIOR, GEOLOGICAL SURVEY.  
SAID ELEVATION IS MARKED AS BEING 5966 FEET.

**BASIS OF BEARINGS**

BASIS OF BEARINGS IS A G.P.S. OBSERVATION.



*Sheet 1m of 11*

**CERTIFICATE**

THIS IS TO CERTIFY THAT THE ABOVE PLAT WAS PREPARED FROM  
FIELD NOTES OF ACTUAL SURVEYS MADE BY ME OR UNDER MY  
SUPERVISION AND THAT THE SAME ARE TRUE AND CORRECT TO THE  
BEST OF MY KNOWLEDGE AND BELIEF.

REGISTERED LAND SURVEYOR  
REGISTRATION NO. 17992  
STATE OF COLORADO

Revised: 06-29-11 D.R.B.

**UINTAH ENGINEERING & LAND SURVEYING**  
**85 SOUTH 200 EAST – VERNAL, UTAH 84078**  
(435) 789-1017

SCALE 1" = 1000'	DATE SURVEYED: 11-22-10	DATE DRAWN: 06-15-11
PARTY G.O. T.M. D.R.B.	REFERENCES G.L.O. PLAT	
WEATHER COOL	FILE Encana OIL & GAS (USA) INC.	