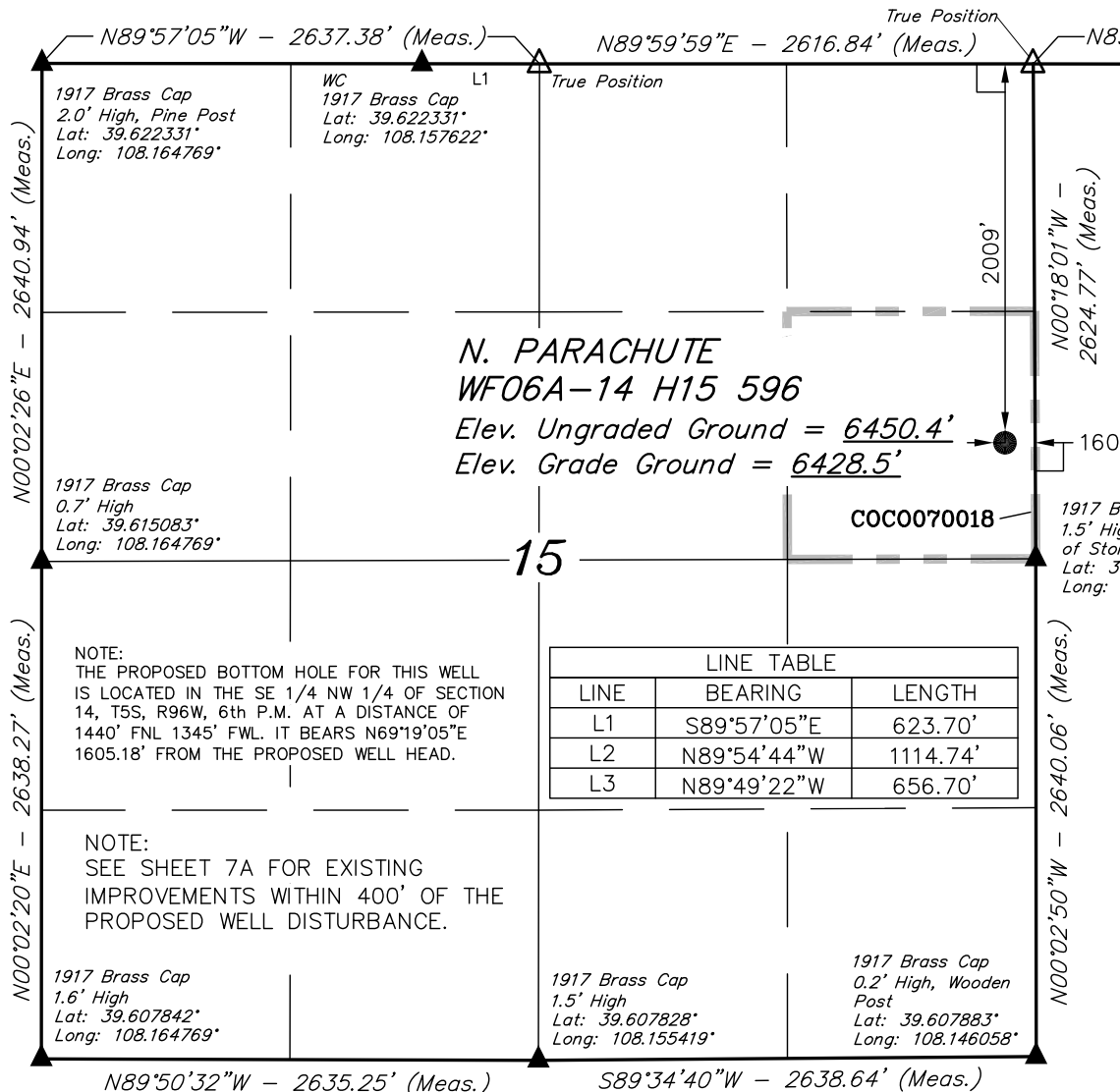


T5S, R96W, 6th P.M.

Encana OIL & GAS (USA) INC.

Well location, N. PARACHUTE WF06A-14 H15 596 (SURFACE LOCATION), located as shown in the SE 1/4 NE 1/4 of Section 15, T5S, R96W, 6th P.M., Garfield County, Colorado.



BASIS OF ELEVATION

SPOT ELEVATION AT THE NORTHWEST CORNER OF SECTION 30, T5S, R95W, 6th P.M. TAKEN FROM THE FORKED GULCH QUADRANGLE, COLORADO, GARFIELD COUNTY, 7.5 MINUTE SERIES (TOPOGRAPHICAL MAP) PUBLISHED BY THE UNITED STATES DEPARTMENT OF THE INTERIOR, GEOLOGICAL SURVEY. SAID ELEVATION IS MARKED AS BEING 5966 FEET.

BASIS OF BEARINGS

BASIS OF BEARINGS IS A G.P.S. OBSERVATION.

Sheet 1t of 11



CERTIFICATE

THIS IS TO CERTIFY THAT THE ABOVE PLAT WAS PREPARED FROM FIELD NOTES OF ACTUAL SURVEYS MADE BY ME OR UNDER MY SUPERVISION AND THAT THE SAME ARE TRUE AND CORRECT TO THE BEST OF MY KNOWLEDGE AND BELIEF.

REGISTERED LAND SURVEYOR
REGISTRATION NO. 17492
STATE OF COLORADO

06-22-2011

UINTAH ENGINEERING & LAND SURVEYING
85 SOUTH 200 EAST - VERNAL, UTAH 84078
(435) 789-1017

LEGEND:

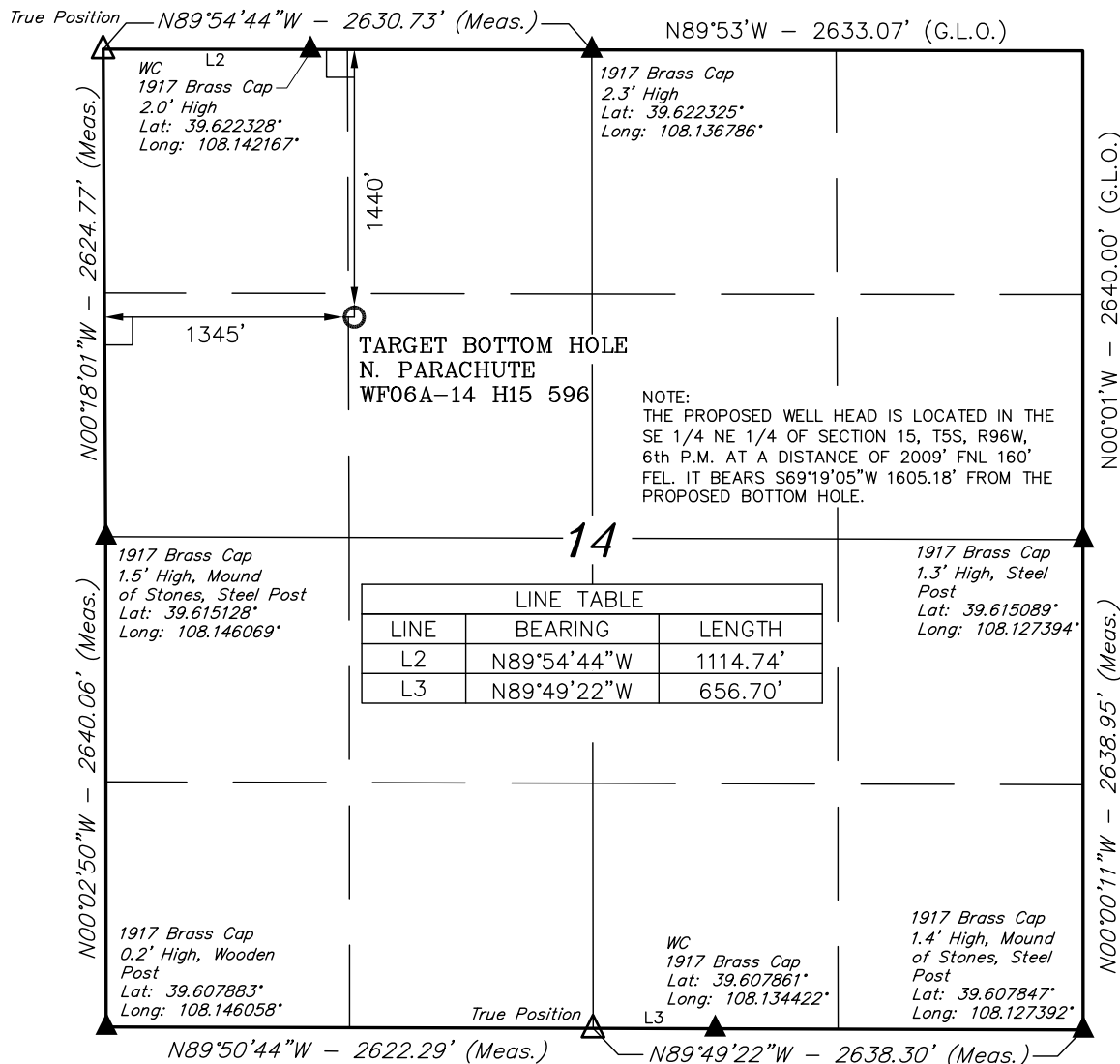
- └─┘ = 90° SYMBOL
- = PROPOSED WELL HEAD.
- ▲ = SECTION CORNERS LOCATED.
- △ = SECTION CORNERS RE-EST.
(Not Set on Ground)

PDOP = 2.6

| NAD 83 (SURFACE LOCATION) | |
|---------------------------|------------------------------|
| LATITUDE | = 39°37'00.54" (39.616817) |
| LONGITUDE | = 108°08'47.93" (108.146647) |
| NAD 27 (SURFACE LOCATION) | |
| LATITUDE | = 39°37'00.63" (39.616842) |
| LONGITUDE | = 108°08'45.64" (108.146011) |

| | | |
|---------------------------|-------------------------------------|-------------------------|
| SCALE 1" = 1000' | DATE SURVEYED: 11-22-10 | DATE DRAWN: 06-15-11 |
| PARTY G.O. T.M. D.R.B. | REFERENCES G.L.O. PLAT | |
| WEATHER COOL | FILE Encana OIL & GAS (USA) INC. | |

T5S, R96W, 6th P.M.



LEGEND:

- └─┘ = 90° SYMBOL
- = PROPOSED WELL HEAD.
- ▲ = SECTION CORNERS LOCATED.
- △ = SECTION CORNERS RE-EST.
(Not Set on Ground)

| | |
|------------------------------------|------------------------------|
| NAD 83 (TARGET BOTTOM HOLE) | |
| LATITUDE | = 39°37'06.15" (39.618375) |
| LONGITUDE | = 108°08'28.75" (108.141319) |
| NAD 27 (TARGET BOTTOM HOLE) | |
| LATITUDE | = 39°37'06.24" (39.618400) |
| LONGITUDE | = 108°08'26.46" (108.140683) |

Encana OIL & GAS (USA) INC.

Well location, N. PARACHUTE WF06A-14 H15 596 (TARGET BOTTOM HOLE), located as shown in the SE 1/4 NW 1/4 of Section 14, T5S, R96W, 6th P.M., Garfield County, Colorado.

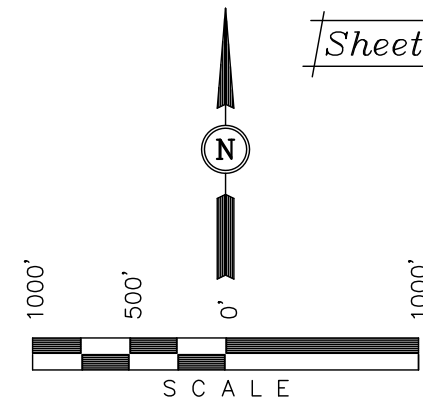
BASIS OF ELEVATION

SPOT ELEVATION AT THE NORTHWEST CORNER OF SECTION 30, T5S, R95W, 6th P.M. TAKEN FROM THE FORKED GULCH QUADRANGLE, COLORADO, GARFIELD COUNTY, 7.5 MINUTE SERIES (TOPOGRAPHICAL MAP) PUBLISHED BY THE UNITED STATES DEPARTMENT OF THE INTERIOR, GEOLOGICAL SURVEY. SAID ELEVATION IS MARKED AS BEING 5966 FEET.

BASIS OF BEARINGS

BASIS OF BEARINGS IS A G.P.S. OBSERVATION.

Sheet 1u of 11



CERTIFICATE

THIS IS TO CERTIFY THAT THE ABOVE PLAT WAS PREPARED FROM FIELD NOTES OF ACTUAL SURVEYS MADE BY ME OR UNDER MY SUPERVISION AND THAT THE SAME ARE TRUE AND CORRECT TO THE BEST OF MY KNOWLEDGE AND BELIEF.

REGISTERED LAND SURVEYOR
REGISTRATION NO. 17492
STATE OF COLORADO

Revised: 06-29-11 D.R.B.

UINTAH ENGINEERING & LAND SURVEYING
85 SOUTH 200 EAST — VERNAL, UTAH 84078
(435) 789-1017

| | | |
|---------------------------|-------------------------------------|-------------------------|
| SCALE 1" = 1000' | DATE SURVEYED: 11-22-10 | DATE DRAWN: 06-15-11 |
| PARTY G.O. T.M. D.R.B. | REFERENCES G.L.O. PLAT | |
| WEATHER COOL | FILE Encana OIL & GAS (USA) INC. | |