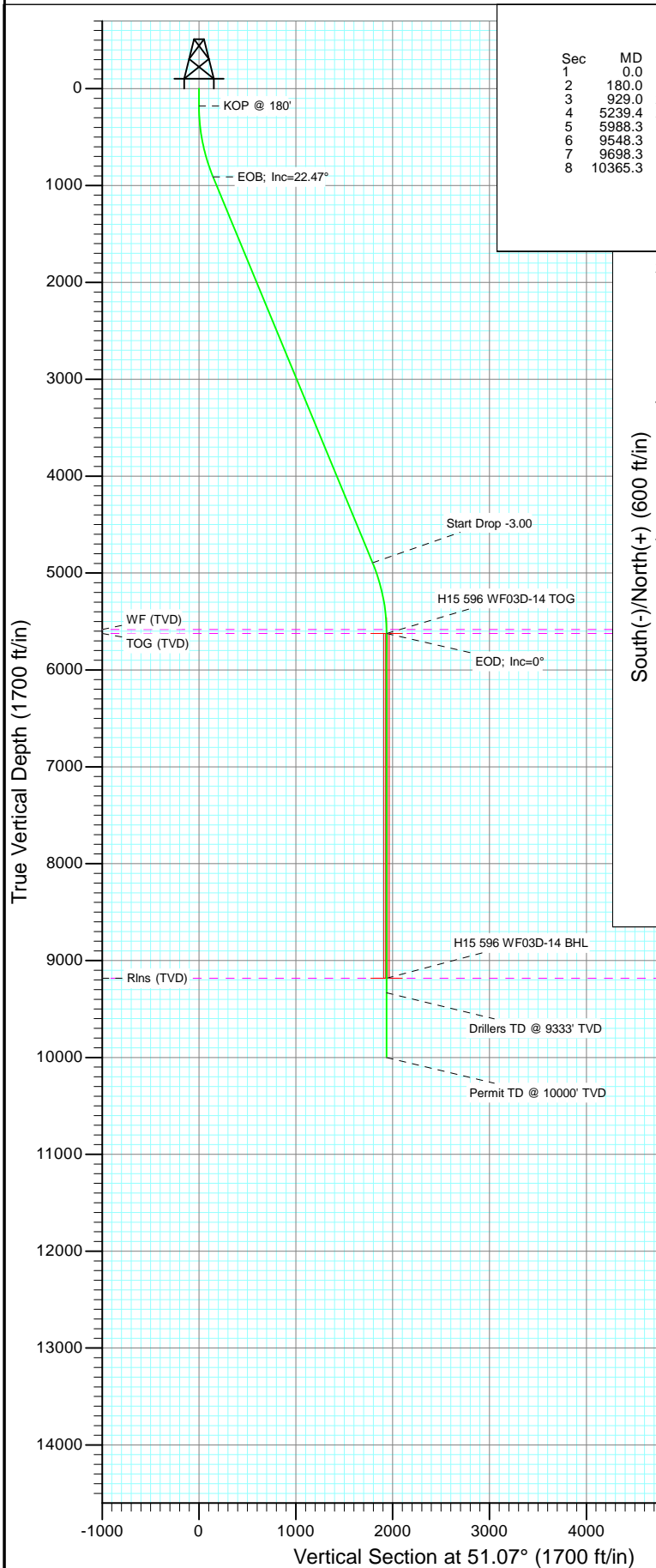
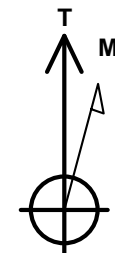
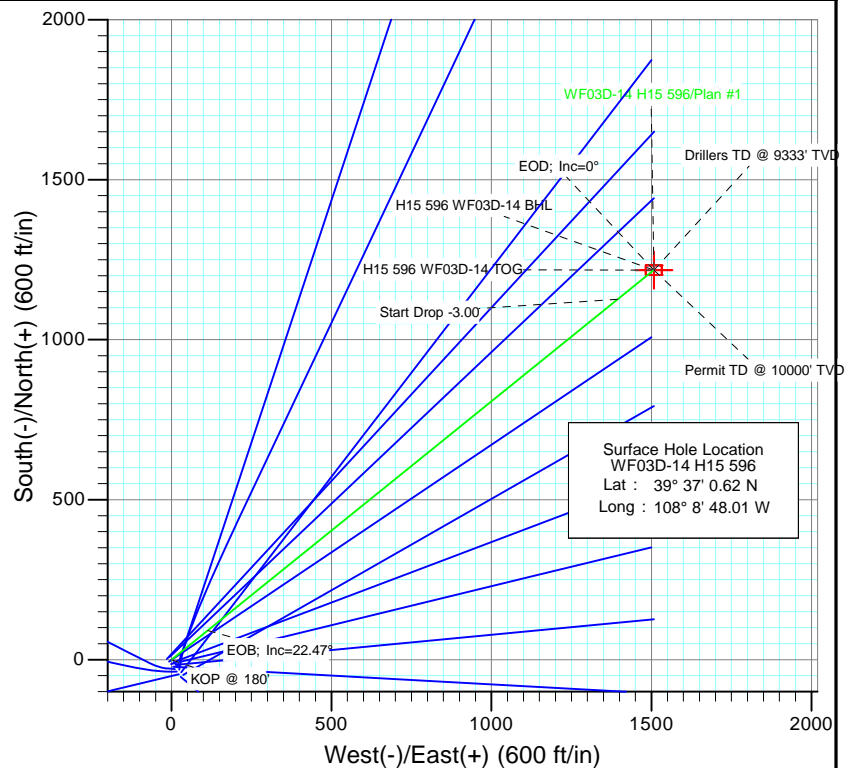




Project: North Piceance
Site: H15 596 (S15-T5S-96W)
Well: WF03D-14 H15 596
Wellbore: DD
Design: Plan #1



SECTION DETAILS										
Sec	MD	Inc	Azi	TVD	+N/-S	+E/-W	Dleg	TFace	VSec	Target
1	0.0	0.00	0.00	0.0	0.0	0.0	0.00	0.00	0.0	
2	180.0	0.00	0.00	180.0	0.0	0.0	0.00	0.00	0.0	
3	929.0	22.47	51.07	909.9	91.1	112.8	3.00	51.07	145.0	
4	5239.4	22.47	51.07	4893.1	1126.2	1394.3	0.00	0.00	1792.3	
5	5988.3	0.00	0.00	5623.0	1217.3	1507.1	3.00	180.00	1937.3	H15 596 WF03D-14 TOG
6	9548.3	0.00	0.00	9183.0	1217.3	1507.1	0.00	0.00	1937.3	H15 596 WF03D-14 BHL
7	9698.3	0.00	0.00	9333.0	1217.3	1507.1	0.00	0.00	1937.3	
8	10365.3	0.00	0.00	10000.0	1217.3	1507.1	0.00	0.00	1937.3	



Azimuths to True North
Magnetic North: 10.44°

Magnetic Field
Strength: 52294.6snT
Dip Angle: 65.81°
Date: 6/7/2011
Model: IGRF2010

FORMATION TOP DETAILS

TVDPath	MDPath	Formation
5583.0	5948.3	WF (TVD)
5623.0	5988.3	TOG (TVD)
9183.0	9548.3	Rins (TVD)

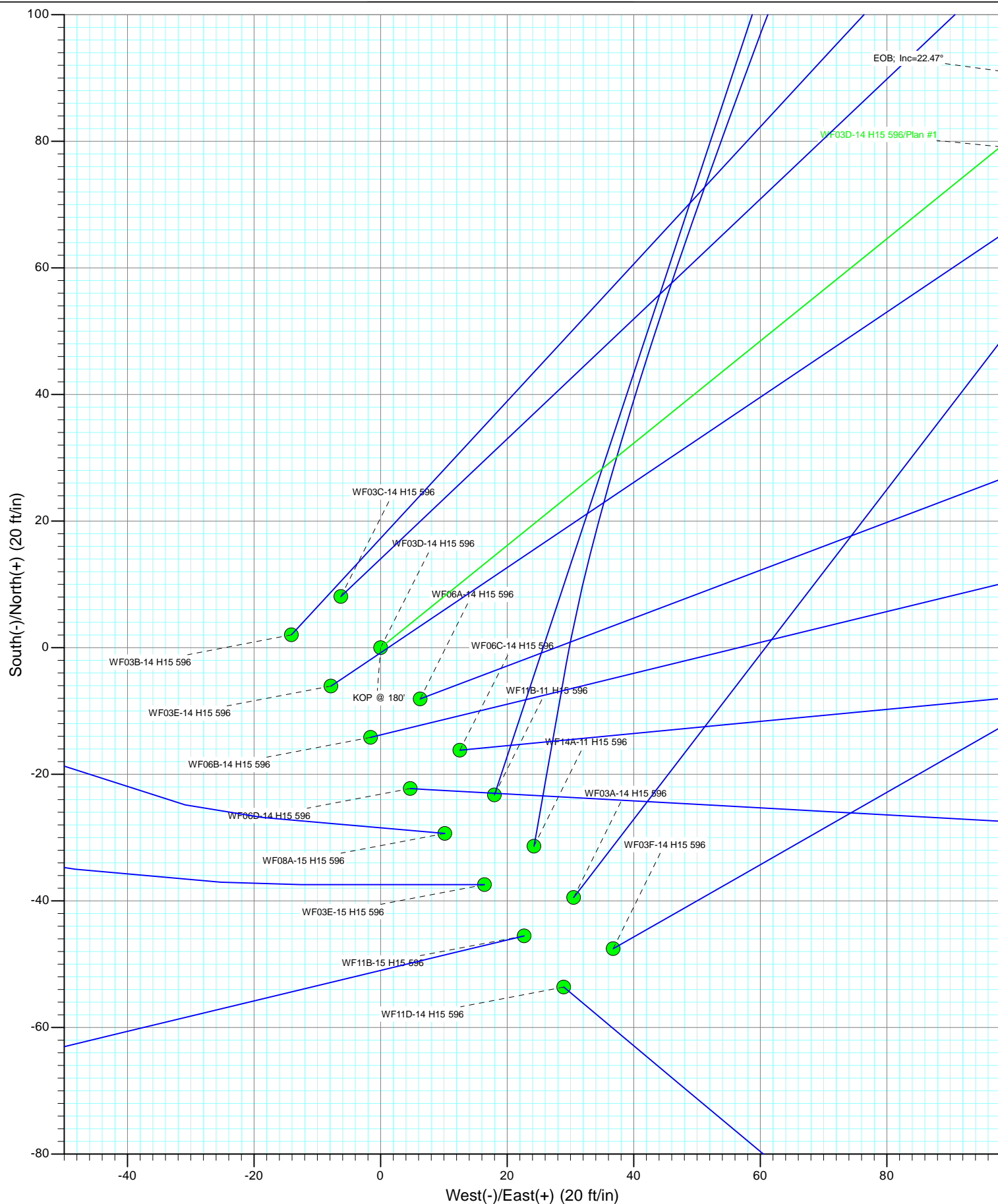
Plan #1
WF03D-14 H15 596
115xxx; LR

KBE @ 6453.0ft (Original Well Elev)
North American Datum 1983
Well WF03D-14 H15 596, True North

Type	Target	Azimuth	Origin	Type	N/S	E/W	From
Target	H15 596 WF03D-14 BHL	51.07	Slot		0.0	0.0	TVD
							0.0
Name	TVD	+N/-S	+E/-W	Latitude	Longitude		
H15 596 WF03D-14 TOG	5623.0	1217.3	1507.1	39° 37' 12.65 N	108° 8' 28.75 W		
H15 596 WF03D-14 BHL	9183.0	1217.3	1507.1	39° 37' 12.65 N	108° 8' 28.75 W		

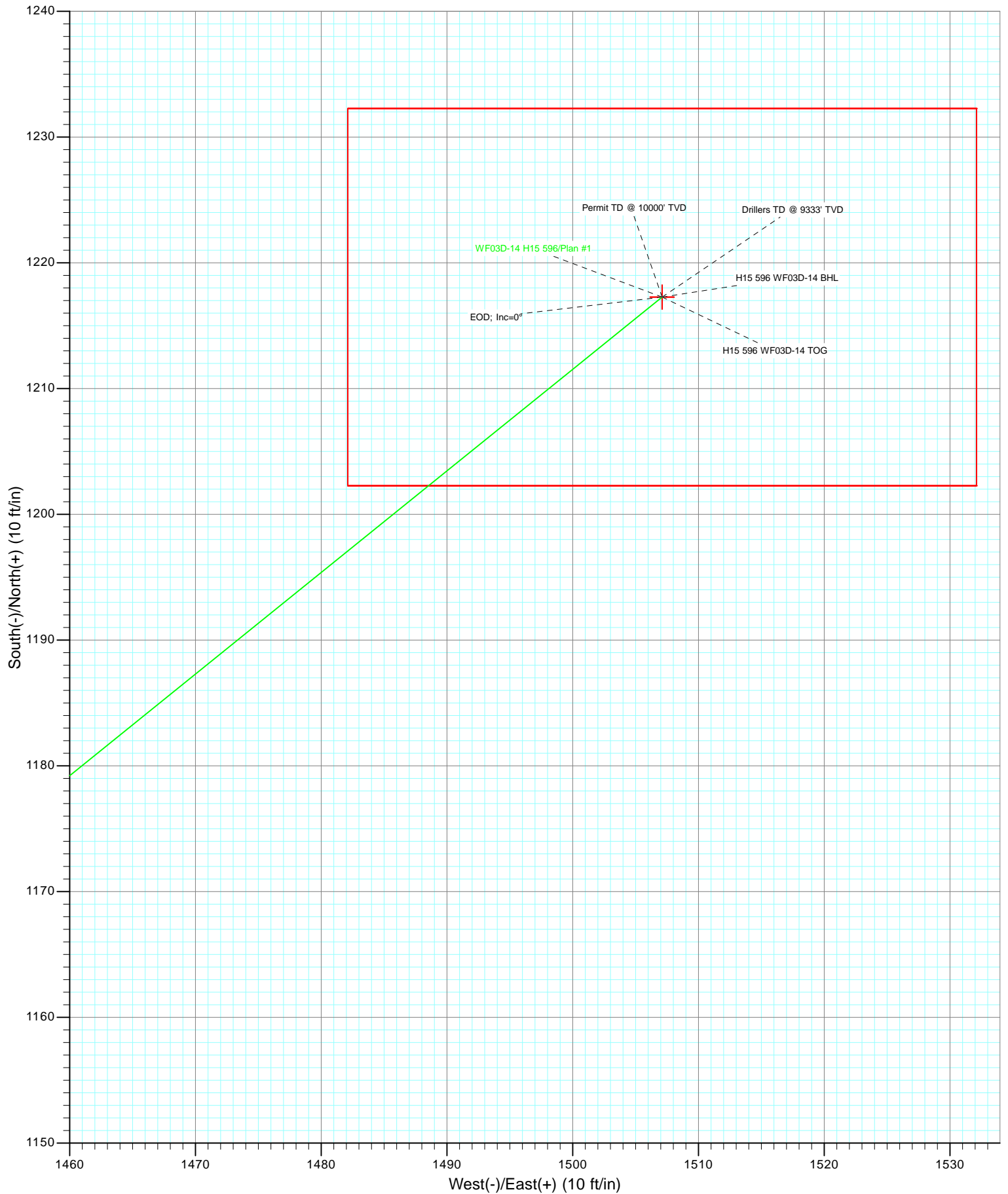


Project: North Piceance
Site: H15 596 (S15-T5S-96W)
Well: WF03D-14 H15 596
Wellbore: DD
Design: Plan #1





Project: North Piceance
Site: H15 596 (S15-T5S-96W)
Well: WF03D-14 H15 596
Wellbore: DD
Design: Plan #1



Planning Report

Database:	EDM 5000.1 US Multi Users DB	Local Co-ordinate Reference:	Well WF03D-14 H15 596
Company:	EnCana Oil & Gas (USA) Inc	TVD Reference:	KBE @ 6453.0ft (Original Well Elev)
Project:	North Piceance	MD Reference:	KBE @ 6453.0ft (Original Well Elev)
Site:	H15 596 (S15-T5S-96W)	North Reference:	True
Well:	WF03D-14 H15 596	Survey Calculation Method:	Minimum Curvature
Wellbore:	DD		
Design:	Plan #1		

Project	North Piceance		
Map System:	US State Plane 1983	System Datum:	Mean Sea Level
Geo Datum:	North American Datum 1983		
Map Zone:	Colorado Central Zone		

Site	H15 596 (S15-T5S-96W)			
Site Position:		Northing:	1,660,371.18 ft	Latitude: 39° 37' 0.09 N
From:	Lat/Long	Easting:	2,254,528.31 ft	Longitude: 108° 8' 47.64 W
Position Uncertainty:	0.0 ft	Slot Radius:	13.200 in	Grid Convergence: -1.67 °

Well	WF03D-14 H15 596			
Well Position	+N/-S	0.0 ft	Northing:	1,660,425.61 ft
	+E/-W	0.0 ft	Easting:	2,254,500.93 ft
Position Uncertainty	0.0 ft		Wellhead Elevation:	ft
			Ground Level:	6,431.0 ft

Wellbore	DD				
Magnetics	Model Name	Sample Date	Declination (°)	Dip Angle (°)	Field Strength (nT)
	IGRF2010	6/7/2011	10.44	65.81	52,295

Design	Plan #1			
Audit Notes:				
Version:	Phase:	PLAN	Tie On Depth:	0.0
Vertical Section:	Depth From (TVD) (ft)	+N/-S (ft)	+E/-W (ft)	Direction (°)
	0.0	0.0	0.0	51.07

Plan Sections										
Measured Depth (ft)	Inclination (°)	Azimuth (°)	Vertical Depth (ft)	+N/-S (ft)	+E/-W (ft)	Dogleg Rate (°/100ft)	Build Rate (°/100ft)	Turn Rate (°/100ft)	TFO (°)	Target
0.0	0.00	0.00	0.0	0.0	0.0	0.00	0.00	0.00	0.00	
180.0	0.00	0.00	180.0	0.0	0.0	0.00	0.00	0.00	0.00	
929.0	22.47	51.07	909.9	91.1	112.8	3.00	3.00	0.00	51.07	
5,239.4	22.47	51.07	4,893.1	1,126.2	1,394.3	0.00	0.00	0.00	0.00	
5,988.3	0.00	0.00	5,623.0	1,217.3	1,507.1	3.00	-3.00	0.00	180.00	H15 596 WF03D-14 T
9,548.3	0.00	0.00	9,183.0	1,217.3	1,507.1	0.00	0.00	0.00	0.00	H15 596 WF03D-14 E
9,698.3	0.00	0.00	9,333.0	1,217.3	1,507.1	0.00	0.00	0.00	0.00	
10,365.3	0.00	0.00	10,000.0	1,217.3	1,507.1	0.00	0.00	0.00	0.00	

Planning Report

Database:	EDM 5000.1 US Multi Users DB	Local Co-ordinate Reference:	Well WF03D-14 H15 596
Company:	EnCana Oil & Gas (USA) Inc	TVD Reference:	KBE @ 6453.0ft (Original Well Elev)
Project:	North Piceance	MD Reference:	KBE @ 6453.0ft (Original Well Elev)
Site:	H15 596 (S15-T5S-96W)	North Reference:	True
Well:	WF03D-14 H15 596	Survey Calculation Method:	Minimum Curvature
Wellbore:	DD		
Design:	Plan #1		

Planned Survey									
Measured Depth (ft)	Inclination (°)	Azimuth (°)	Vertical Depth (ft)	+N/-S (ft)	+E/-W (ft)	Vertical Section (ft)	Dogleg Rate (°/100ft)	Build Rate (°/100ft)	Comments / Formations
0.0	0.00	0.00	0.0	0.0	0.0	0.0	0.00	0.00	
30.0	0.00	0.00	30.0	0.0	0.0	0.0	0.00	0.00	
60.0	0.00	0.00	60.0	0.0	0.0	0.0	0.00	0.00	
90.0	0.00	0.00	90.0	0.0	0.0	0.0	0.00	0.00	
120.0	0.00	0.00	120.0	0.0	0.0	0.0	0.00	0.00	
150.0	0.00	0.00	150.0	0.0	0.0	0.0	0.00	0.00	
180.0	0.00	0.00	180.0	0.0	0.0	0.0	0.00	0.00	
210.0	0.90	51.07	210.0	0.1	0.2	0.2	3.00	3.00	
240.0	1.80	51.07	240.0	0.6	0.7	0.9	3.00	3.00	
270.0	2.70	51.07	270.0	1.3	1.6	2.1	3.00	3.00	
300.0	3.60	51.07	299.9	2.4	2.9	3.8	3.00	3.00	
330.0	4.50	51.07	329.8	3.7	4.6	5.9	3.00	3.00	
360.0	5.40	51.07	359.7	5.3	6.6	8.5	3.00	3.00	
390.0	6.30	51.07	389.6	7.2	9.0	11.5	3.00	3.00	
420.0	7.20	51.07	419.4	9.5	11.7	15.1	3.00	3.00	
450.0	8.10	51.07	449.1	12.0	14.8	19.1	3.00	3.00	
480.0	9.00	51.07	478.8	14.8	18.3	23.5	3.00	3.00	
510.0	9.90	51.07	508.4	17.9	22.1	28.4	3.00	3.00	
540.0	10.80	51.07	537.9	21.3	26.3	33.8	3.00	3.00	
570.0	11.70	51.07	567.3	24.9	30.9	39.7	3.00	3.00	
600.0	12.60	51.07	596.6	28.9	35.8	46.0	3.00	3.00	
630.0	13.50	51.07	625.8	33.2	41.1	52.8	3.00	3.00	
660.0	14.40	51.07	655.0	37.7	46.7	60.0	3.00	3.00	
690.0	15.30	51.07	684.0	42.5	52.7	67.7	3.00	3.00	
720.0	16.20	51.07	712.8	47.6	59.0	75.8	3.00	3.00	
750.0	17.10	51.07	741.6	53.0	65.7	84.4	3.00	3.00	
780.0	18.00	51.07	770.2	58.7	72.7	93.5	3.00	3.00	
810.0	18.90	51.07	798.6	64.7	80.1	103.0	3.00	3.00	
840.0	19.80	51.07	826.9	70.9	87.8	112.9	3.00	3.00	
870.0	20.70	51.07	855.1	77.5	95.9	123.3	3.00	3.00	
900.0	21.60	51.07	883.1	84.3	104.3	134.1	3.00	3.00	
929.0	22.47	51.07	909.9	91.1	112.8	145.0	3.00	3.00	
930.0	22.47	51.07	910.9	91.3	113.1	145.4	0.00	0.00	
960.0	22.47	51.07	938.6	98.6	122.0	156.8	0.00	0.00	
990.0	22.47	51.07	966.3	105.8	130.9	168.3	0.00	0.00	
1,020.0	22.47	51.07	994.0	113.0	139.9	179.8	0.00	0.00	
1,050.0	22.47	51.07	1,021.8	120.2	148.8	191.2	0.00	0.00	
1,080.0	22.47	51.07	1,049.5	127.4	157.7	202.7	0.00	0.00	
1,110.0	22.47	51.07	1,077.2	134.6	166.6	214.2	0.00	0.00	
1,140.0	22.47	51.07	1,104.9	141.8	175.5	225.6	0.00	0.00	
1,170.0	22.47	51.07	1,132.7	149.0	184.5	237.1	0.00	0.00	
1,200.0	22.47	51.07	1,160.4	156.2	193.4	248.6	0.00	0.00	
1,230.0	22.47	51.07	1,188.1	163.4	202.3	260.0	0.00	0.00	
1,260.0	22.47	51.07	1,215.8	170.6	211.2	271.5	0.00	0.00	
1,290.0	22.47	51.07	1,243.5	177.8	220.1	283.0	0.00	0.00	
1,320.0	22.47	51.07	1,271.3	185.0	229.0	294.4	0.00	0.00	
1,350.0	22.47	51.07	1,299.0	192.2	238.0	305.9	0.00	0.00	
1,380.0	22.47	51.07	1,326.7	199.4	246.9	317.4	0.00	0.00	
1,410.0	22.47	51.07	1,354.4	206.6	255.8	328.8	0.00	0.00	
1,440.0	22.47	51.07	1,382.2	213.8	264.7	340.3	0.00	0.00	
1,470.0	22.47	51.07	1,409.9	221.0	273.6	351.8	0.00	0.00	
1,500.0	22.47	51.07	1,437.6	228.2	282.6	363.2	0.00	0.00	

Planning Report

Database:	EDM 5000.1 US Multi Users DB	Local Co-ordinate Reference:	Well WF03D-14 H15 596
Company:	EnCana Oil & Gas (USA) Inc	TVD Reference:	KBE @ 6453.0ft (Original Well Elev)
Project:	North Piceance	MD Reference:	KBE @ 6453.0ft (Original Well Elev)
Site:	H15 596 (S15-T5S-96W)	North Reference:	True
Well:	WF03D-14 H15 596	Survey Calculation Method:	Minimum Curvature
Wellbore:	DD		
Design:	Plan #1		

Planned Survey

Measured Depth (ft)	Inclination (°)	Azimuth (°)	Vertical Depth (ft)	+N/-S (ft)	+E/-W (ft)	Vertical Section (ft)	Dogleg Rate (°/100ft)	Build Rate (°/100ft)	Comments / Formations
1,530.0	22.47	51.07	1,465.3	235.4	291.5	374.7	0.00	0.00	
1,560.0	22.47	51.07	1,493.0	242.6	300.4	386.2	0.00	0.00	
1,590.0	22.47	51.07	1,520.8	249.8	309.3	397.6	0.00	0.00	
1,620.0	22.47	51.07	1,548.5	257.0	318.2	409.1	0.00	0.00	
1,650.0	22.47	51.07	1,576.2	264.2	327.2	420.5	0.00	0.00	
1,680.0	22.47	51.07	1,603.9	271.4	336.1	432.0	0.00	0.00	
1,710.0	22.47	51.07	1,631.7	278.7	345.0	443.5	0.00	0.00	
1,740.0	22.47	51.07	1,659.4	285.9	353.9	454.9	0.00	0.00	
1,770.0	22.47	51.07	1,687.1	293.1	362.8	466.4	0.00	0.00	
1,800.0	22.47	51.07	1,714.8	300.3	371.8	477.9	0.00	0.00	
1,830.0	22.47	51.07	1,742.6	307.5	380.7	489.3	0.00	0.00	
1,860.0	22.47	51.07	1,770.3	314.7	389.6	500.8	0.00	0.00	
1,890.0	22.47	51.07	1,798.0	321.9	398.5	512.3	0.00	0.00	
1,920.0	22.47	51.07	1,825.7	329.1	407.4	523.7	0.00	0.00	
1,950.0	22.47	51.07	1,853.4	336.3	416.4	535.2	0.00	0.00	
1,980.0	22.47	51.07	1,881.2	343.5	425.3	546.7	0.00	0.00	
2,010.0	22.47	51.07	1,908.9	350.7	434.2	558.1	0.00	0.00	
2,040.0	22.47	51.07	1,936.6	357.9	443.1	569.6	0.00	0.00	
2,070.0	22.47	51.07	1,964.3	365.1	452.0	581.1	0.00	0.00	
2,100.0	22.47	51.07	1,992.1	372.3	461.0	592.5	0.00	0.00	
2,130.0	22.47	51.07	2,019.8	379.5	469.9	604.0	0.00	0.00	
2,160.0	22.47	51.07	2,047.5	386.7	478.8	615.5	0.00	0.00	
2,190.0	22.47	51.07	2,075.2	393.9	487.7	626.9	0.00	0.00	
2,220.0	22.47	51.07	2,102.9	401.1	496.6	638.4	0.00	0.00	
2,250.0	22.47	51.07	2,130.7	408.3	505.6	649.9	0.00	0.00	
2,280.0	22.47	51.07	2,158.4	415.5	514.5	661.3	0.00	0.00	
2,310.0	22.47	51.07	2,186.1	422.7	523.4	672.8	0.00	0.00	
2,340.0	22.47	51.07	2,213.8	429.9	532.3	684.3	0.00	0.00	
2,370.0	22.47	51.07	2,241.6	437.1	541.2	695.7	0.00	0.00	
2,400.0	22.47	51.07	2,269.3	444.3	550.1	707.2	0.00	0.00	
2,430.0	22.47	51.07	2,297.0	451.6	559.1	718.6	0.00	0.00	
2,460.0	22.47	51.07	2,324.7	458.8	568.0	730.1	0.00	0.00	
2,490.0	22.47	51.07	2,352.4	466.0	576.9	741.6	0.00	0.00	

Targets

Target Name	Dip Angle (°)	Dip Dir. (°)	TVD (ft)	+N/-S (ft)	+E/-W (ft)	Northing (ft)	Easting (ft)	Latitude	Longitude
- hit/miss target									
- Shape									
H15 596 WF03D-14 BHI	0.00	0.00	9,183.0	1,217.3	1,507.1	1,661,598.47	2,256,042.86	39° 37' 12.65 N	108° 8' 28.75 W
- plan misses target center by 6934.4ft at 2490.0ft MD (2352.4 TVD, 466.0 N, 576.9 E)									
- Rectangle (sides W30.0 H50.0 D0.0)									
H15 596 WF03D-14 TOX	0.00	0.00	5,623.0	1,217.3	1,507.1	1,661,598.47	2,256,042.86	39° 37' 12.65 N	108° 8' 28.75 W
- plan misses target center by 3482.3ft at 2490.0ft MD (2352.4 TVD, 466.0 N, 576.9 E)									
- Point									

Planning Report

Database:	EDM 5000.1 US Multi Users DB	Local Co-ordinate Reference:	Well WF03D-14 H15 596
Company:	EnCana Oil & Gas (USA) Inc	TVD Reference:	KBE @ 6453.0ft (Original Well Elev)
Project:	North Piceance	MD Reference:	KBE @ 6453.0ft (Original Well Elev)
Site:	H15 596 (S15-T5S-96W)	North Reference:	True
Well:	WF03D-14 H15 596	Survey Calculation Method:	Minimum Curvature
Wellbore:	DD		
Design:	Plan #1		

Planned Survey

Measured Depth (ft)	Inclination (°)	Azimuth (°)	Vertical Depth (ft)	+N/-S (ft)	+E/-W (ft)	Vertical Section (ft)	Dogleg Rate (°/100ft)	Build Rate (°/100ft)	Comments / Formations
2,500.0	22.47	51.07	2,361.7	468.4	579.9	745.4	0.00	0.00	
2,600.0	22.47	51.07	2,454.1	492.4	609.6	783.6	0.00	0.00	
2,700.0	22.47	51.07	2,546.5	516.4	639.3	821.8	0.00	0.00	
2,800.0	22.47	51.07	2,638.9	540.4	669.1	860.1	0.00	0.00	
2,900.0	22.47	51.07	2,731.3	564.4	698.8	898.3	0.00	0.00	
3,000.0	22.47	51.07	2,823.7	588.4	728.5	936.5	0.00	0.00	
3,100.0	22.47	51.07	2,916.1	612.4	758.3	974.7	0.00	0.00	
3,200.0	22.47	51.07	3,008.6	636.5	788.0	1,012.9	0.00	0.00	
3,300.0	22.47	51.07	3,101.0	660.5	817.7	1,051.1	0.00	0.00	
3,400.0	22.47	51.07	3,193.4	684.5	847.5	1,089.4	0.00	0.00	
3,500.0	22.47	51.07	3,285.8	708.5	877.2	1,127.6	0.00	0.00	
3,600.0	22.47	51.07	3,378.2	732.5	906.9	1,165.8	0.00	0.00	
3,700.0	22.47	51.07	3,470.6	756.5	936.7	1,204.0	0.00	0.00	
3,800.0	22.47	51.07	3,563.0	780.5	966.4	1,242.2	0.00	0.00	
3,900.0	22.47	51.07	3,655.4	804.6	996.1	1,280.5	0.00	0.00	
4,000.0	22.47	51.07	3,747.8	828.6	1,025.8	1,318.7	0.00	0.00	
4,100.0	22.47	51.07	3,840.2	852.6	1,055.6	1,356.9	0.00	0.00	
4,200.0	22.47	51.07	3,932.6	876.6	1,085.3	1,395.1	0.00	0.00	
4,300.0	22.47	51.07	4,025.0	900.6	1,115.0	1,433.3	0.00	0.00	
4,400.0	22.47	51.07	4,117.5	924.6	1,144.8	1,471.5	0.00	0.00	
4,500.0	22.47	51.07	4,209.9	948.6	1,174.5	1,509.8	0.00	0.00	
4,600.0	22.47	51.07	4,302.3	972.6	1,204.2	1,548.0	0.00	0.00	
4,700.0	22.47	51.07	4,394.7	996.7	1,234.0	1,586.2	0.00	0.00	
4,800.0	22.47	51.07	4,487.1	1,020.7	1,263.7	1,624.4	0.00	0.00	
4,900.0	22.47	51.07	4,579.5	1,044.7	1,293.4	1,662.6	0.00	0.00	
5,000.0	22.47	51.07	4,671.9	1,068.7	1,323.2	1,700.8	0.00	0.00	
5,100.0	22.47	51.07	4,764.3	1,092.7	1,352.9	1,739.1	0.00	0.00	
5,200.0	22.47	51.07	4,856.7	1,116.7	1,382.6	1,777.3	0.00	0.00	
5,239.4	22.47	51.07	4,893.1	1,126.2	1,394.3	1,792.3	0.00	0.00	
5,300.0	20.65	51.07	4,949.5	1,140.2	1,411.7	1,814.6	3.00	-3.00	
5,400.0	17.65	51.07	5,044.0	1,160.8	1,437.2	1,847.4	3.00	-3.00	
5,500.0	14.65	51.07	5,140.0	1,178.3	1,458.8	1,875.2	3.00	-3.00	
5,600.0	11.65	51.07	5,237.4	1,192.6	1,476.5	1,898.0	3.00	-3.00	
5,700.0	8.65	51.07	5,335.8	1,203.6	1,490.2	1,915.6	3.00	-3.00	
5,800.0	5.65	51.07	5,435.0	1,211.4	1,499.9	1,928.0	3.00	-3.00	
5,900.0	2.65	51.07	5,534.7	1,216.0	1,505.5	1,935.3	3.00	-3.00	
5,948.3	1.20	51.07	5,583.0	1,217.0	1,506.8	1,936.9	3.00	-3.00	WF (TVD)
5,988.3	0.00	0.00	5,623.0	1,217.3	1,507.1	1,937.3	3.00	-3.00	TOG (TVD) - H15 596 WF03D-14 TOG
6,000.0	0.00	0.00	5,634.7	1,217.3	1,507.1	1,937.3	0.00	0.00	
6,100.0	0.00	0.00	5,734.7	1,217.3	1,507.1	1,937.3	0.00	0.00	
6,200.0	0.00	0.00	5,834.7	1,217.3	1,507.1	1,937.3	0.00	0.00	
6,300.0	0.00	0.00	5,934.7	1,217.3	1,507.1	1,937.3	0.00	0.00	
6,400.0	0.00	0.00	6,034.7	1,217.3	1,507.1	1,937.3	0.00	0.00	
6,500.0	0.00	0.00	6,134.7	1,217.3	1,507.1	1,937.3	0.00	0.00	
6,600.0	0.00	0.00	6,234.7	1,217.3	1,507.1	1,937.3	0.00	0.00	
6,700.0	0.00	0.00	6,334.7	1,217.3	1,507.1	1,937.3	0.00	0.00	
6,800.0	0.00	0.00	6,434.7	1,217.3	1,507.1	1,937.3	0.00	0.00	
6,900.0	0.00	0.00	6,534.7	1,217.3	1,507.1	1,937.3	0.00	0.00	
7,000.0	0.00	0.00	6,634.7	1,217.3	1,507.1	1,937.3	0.00	0.00	
7,100.0	0.00	0.00	6,734.7	1,217.3	1,507.1	1,937.3	0.00	0.00	
7,200.0	0.00	0.00	6,834.7	1,217.3	1,507.1	1,937.3	0.00	0.00	
7,300.0	0.00	0.00	6,934.7	1,217.3	1,507.1	1,937.3	0.00	0.00	

Planning Report

Database:	EDM 5000.1 US Multi Users DB	Local Co-ordinate Reference:	Well WF03D-14 H15 596
Company:	EnCana Oil & Gas (USA) Inc	TVD Reference:	KBE @ 6453.0ft (Original Well Elev)
Project:	North Piceance	MD Reference:	KBE @ 6453.0ft (Original Well Elev)
Site:	H15 596 (S15-T5S-96W)	North Reference:	True
Well:	WF03D-14 H15 596	Survey Calculation Method:	Minimum Curvature
Wellbore:	DD		
Design:	Plan #1		

Planned Survey									
Measured Depth (ft)	Inclination (°)	Azimuth (°)	Vertical Depth (ft)	+N/-S (ft)	+E/-W (ft)	Vertical Section (ft)	Dogleg Rate (°/100ft)	Build Rate (°/100ft)	Comments / Formations
7,400.0	0.00	0.00	7,034.7	1,217.3	1,507.1	1,937.3	0.00	0.00	
7,500.0	0.00	0.00	7,134.7	1,217.3	1,507.1	1,937.3	0.00	0.00	
7,600.0	0.00	0.00	7,234.7	1,217.3	1,507.1	1,937.3	0.00	0.00	
7,700.0	0.00	0.00	7,334.7	1,217.3	1,507.1	1,937.3	0.00	0.00	
7,800.0	0.00	0.00	7,434.7	1,217.3	1,507.1	1,937.3	0.00	0.00	
7,900.0	0.00	0.00	7,534.7	1,217.3	1,507.1	1,937.3	0.00	0.00	
8,000.0	0.00	0.00	7,634.7	1,217.3	1,507.1	1,937.3	0.00	0.00	
8,100.0	0.00	0.00	7,734.7	1,217.3	1,507.1	1,937.3	0.00	0.00	
8,200.0	0.00	0.00	7,834.7	1,217.3	1,507.1	1,937.3	0.00	0.00	
8,300.0	0.00	0.00	7,934.7	1,217.3	1,507.1	1,937.3	0.00	0.00	
8,400.0	0.00	0.00	8,034.7	1,217.3	1,507.1	1,937.3	0.00	0.00	
8,500.0	0.00	0.00	8,134.7	1,217.3	1,507.1	1,937.3	0.00	0.00	
8,600.0	0.00	0.00	8,234.7	1,217.3	1,507.1	1,937.3	0.00	0.00	
8,700.0	0.00	0.00	8,334.7	1,217.3	1,507.1	1,937.3	0.00	0.00	
8,800.0	0.00	0.00	8,434.7	1,217.3	1,507.1	1,937.3	0.00	0.00	
8,900.0	0.00	0.00	8,534.7	1,217.3	1,507.1	1,937.3	0.00	0.00	
9,000.0	0.00	0.00	8,634.7	1,217.3	1,507.1	1,937.3	0.00	0.00	
9,100.0	0.00	0.00	8,734.7	1,217.3	1,507.1	1,937.3	0.00	0.00	
9,200.0	0.00	0.00	8,834.7	1,217.3	1,507.1	1,937.3	0.00	0.00	
9,300.0	0.00	0.00	8,934.7	1,217.3	1,507.1	1,937.3	0.00	0.00	
9,400.0	0.00	0.00	9,034.7	1,217.3	1,507.1	1,937.3	0.00	0.00	
9,500.0	0.00	0.00	9,134.7	1,217.3	1,507.1	1,937.3	0.00	0.00	
9,548.3	0.00	0.00	9,183.0	1,217.3	1,507.1	1,937.3	0.00	0.00	Rins (TVD) - H15 596 WF03D-14 BHL
9,600.0	0.00	0.00	9,234.7	1,217.3	1,507.1	1,937.3	0.00	0.00	
9,698.3	0.00	0.00	9,333.0	1,217.3	1,507.1	1,937.3	0.00	0.00	
9,700.0	0.00	0.00	9,334.7	1,217.3	1,507.1	1,937.3	0.00	0.00	
9,800.0	0.00	0.00	9,434.7	1,217.3	1,507.1	1,937.3	0.00	0.00	
9,900.0	0.00	0.00	9,534.7	1,217.3	1,507.1	1,937.3	0.00	0.00	
10,000.0	0.00	0.00	9,634.7	1,217.3	1,507.1	1,937.3	0.00	0.00	
10,100.0	0.00	0.00	9,734.7	1,217.3	1,507.1	1,937.3	0.00	0.00	
10,200.0	0.00	0.00	9,834.7	1,217.3	1,507.1	1,937.3	0.00	0.00	
10,300.0	0.00	0.00	9,934.7	1,217.3	1,507.1	1,937.3	0.00	0.00	
10,365.3	0.00	0.00	10,000.0	1,217.3	1,507.1	1,937.3	0.00	0.00	

Targets									
Target Name	Dip Angle (°)	Dip Dir. (°)	TVD (ft)	+N/-S (ft)	+E/-W (ft)	Northing (ft)	Easting (ft)	Latitude	Longitude
- hit/miss target									
- Shape									
H15 596 WF03D-14 BHL - plan hits target center - Rectangle (sides W30.0 H50.0 D0.0)	0.00	0.00	9,183.0	1,217.3	1,507.1	1,661,598.47	2,256,042.86	39° 37' 12.65 N	108° 8' 28.75 W
H15 596 WF03D-14 TO(0.00	0.00	5,623.0	1,217.3	1,507.1	1,661,598.47	2,256,042.86	39° 37' 12.65 N	108° 8' 28.75 W
- plan hits target center									
- Point									

Planning Report

Database:	EDM 5000.1 US Multi Users DB	Local Co-ordinate Reference:	Well WF03D-14 H15 596
Company:	EnCana Oil & Gas (USA) Inc	TVD Reference:	KBE @ 6453.0ft (Original Well Elev)
Project:	North Piceance	MD Reference:	KBE @ 6453.0ft (Original Well Elev)
Site:	H15 596 (S15-T5S-96W)	North Reference:	True
Well:	WF03D-14 H15 596	Survey Calculation Method:	Minimum Curvature
Wellbore:	DD		
Design:	Plan #1		

Formations						
Measured Depth (ft)	Vertical Depth (ft)	Name	Lithology	Dip (°)	Dip Direction (°)	
5,948.3	5,583.0	WF (TVD)		0.00		
5,988.3	5,623.0	TOG (TVD)		0.00		
9,548.3	9,183.0	Rlns (TVD)		0.00		