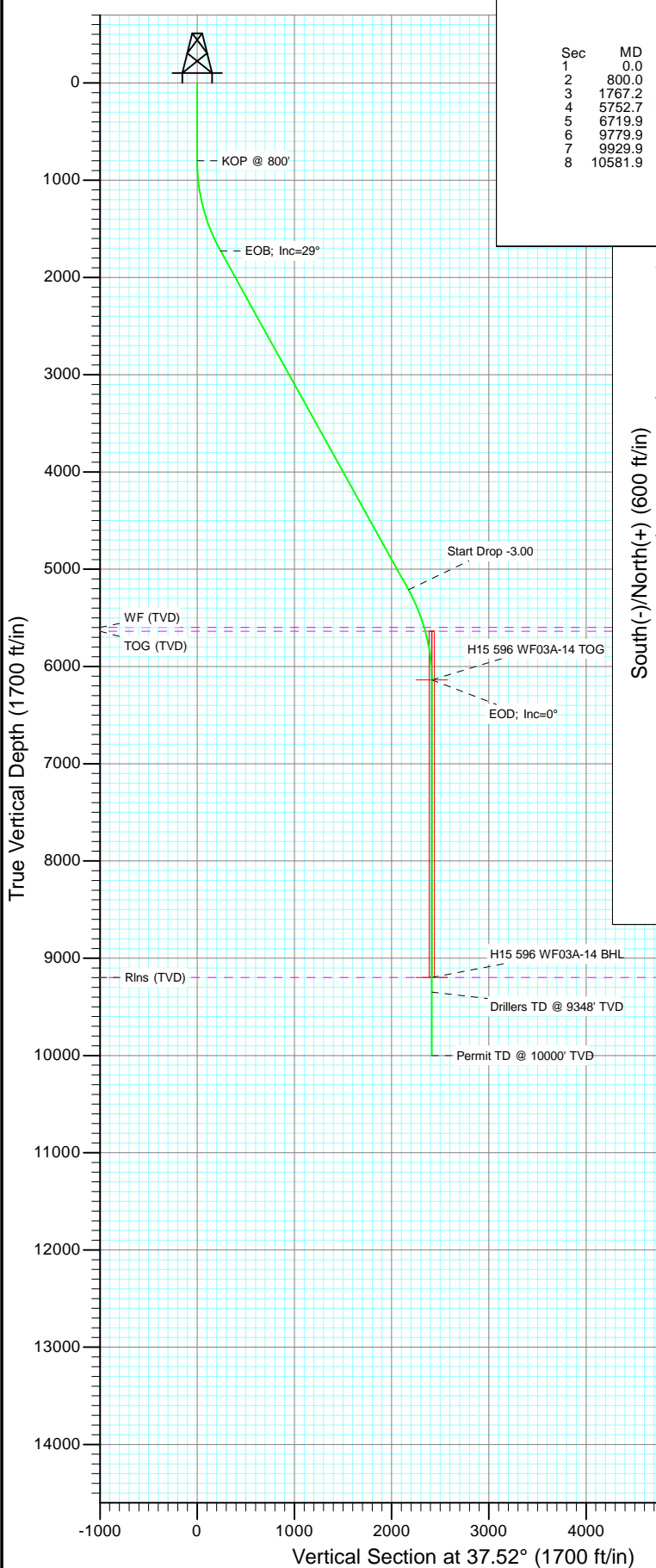
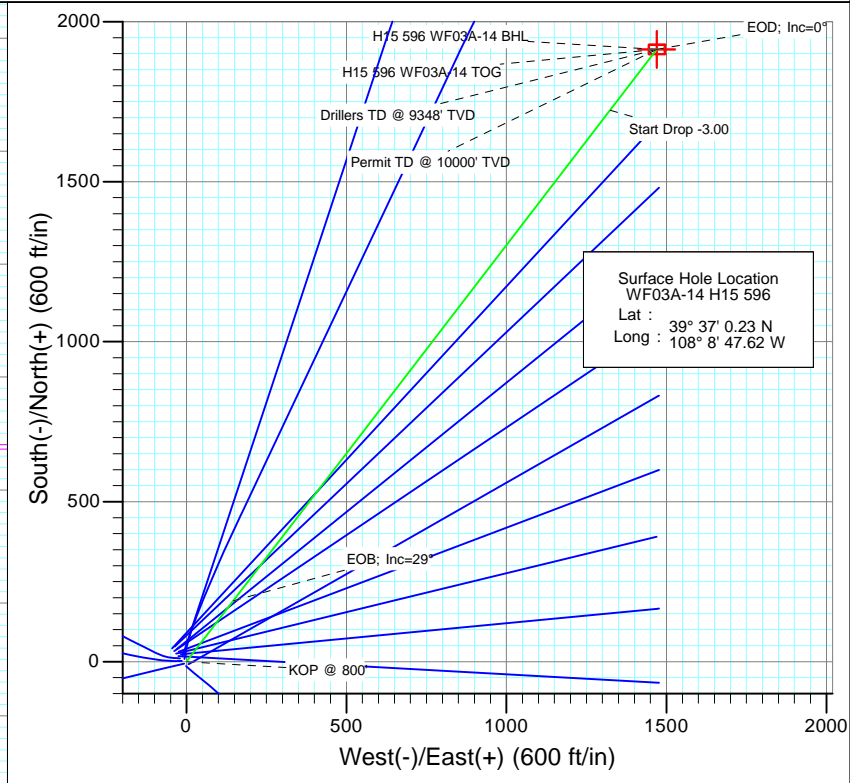




Project: North Piceance  
 Site: H15 596 (S15-T5S-96W)  
 Well: WF03A-14 H15 596  
 Wellbore: DD  
 Design: Plan #1



SECTION DETAILS										
Sec	MD	Inc	Azi	TVD	+N/-S	+E/-W	Dleg	TFace	VSec	Target
1	0.0	0.00	0.00	0.0	0.0	0.0	0.00	0.00	0.0	
2	800.0	0.00	0.00	800.0	0.0	0.0	0.00	0.00	0.0	
3	1767.2	29.02	37.52	1726.4	190.1	146.0	3.00	37.52	239.7	
4	5752.7	29.02	37.52	5211.6	1723.3	1323.5	0.00	0.00	2172.9	
5	6719.9	0.00	0.00	6138.0	1913.4	1469.5	3.00	180.00	2412.6	H15 596 WF03A-14 TOG
6	9779.9	0.00	0.00	9198.0	1913.4	1469.5	0.00	0.00	2412.6	H15 596 WF03A-14 BHL
7	9929.9	0.00	0.00	9348.0	1913.4	1469.5	0.00	0.00	2412.6	
8	10581.9	0.00	0.00	10000.0	1913.4	1469.5	0.00	0.00	2412.6	



Azimuths to True North  
 Magnetic North: 10.44°

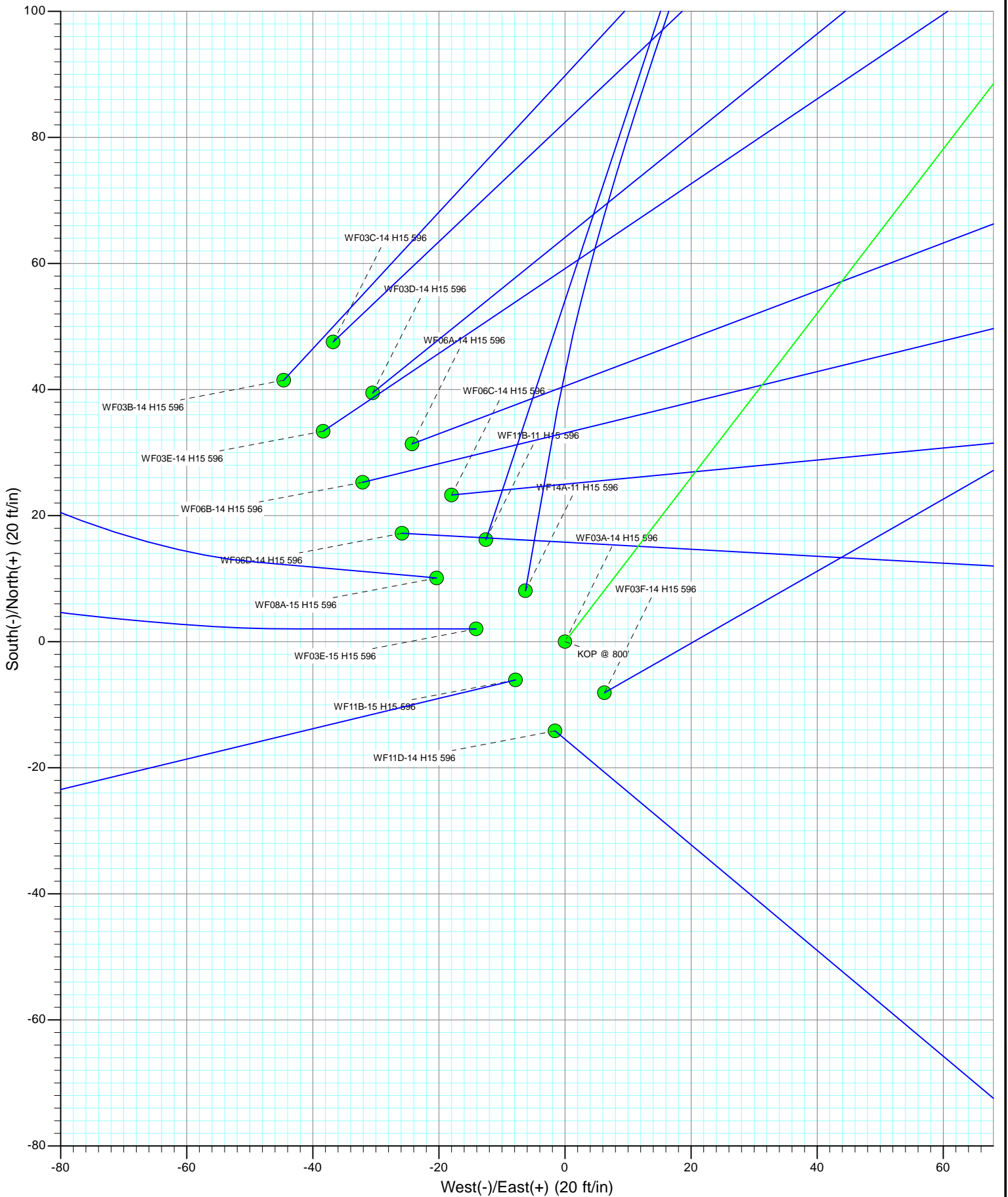
Magnetic Field  
 Strength: 52294.5snT  
 Dip Angle: 65.81°  
 Date: 6/7/2011  
 Model: IGRF2010

FORMATION TOP DETAILS		
TVDPath	MDPath	Formation
5598.0	6172.4	WF (TVD)
5638.0	6214.0	TOG (TVD)
9198.0	9779.9	Rins (TVD)

Plan #1 WF03A-14 H15 596 115xxx; LR						
KBE @ 6453.0ft (Original Well Elev) North American Datum 1983 Well WF03A-14 H15 596, True North						
Type	Target	Azimuth	Origin	Type	N/S	E/W
Target	H15 596 WF03A-14 BHL	37.52			0.0	0.0
						From TVD
						0.0
Name	TVD	+N/-S	+E/-W	Latitude	Longitude	
H15 596 WF03A-14 TOG	6138.0	1913.4	1469.5	39° 37' 19.14 N	108° 8' 28.84 W	
H15 596 WF03A-14 BHL	9198.0	1913.4	1469.5	39° 37' 19.14 N	108° 8' 28.84 W	

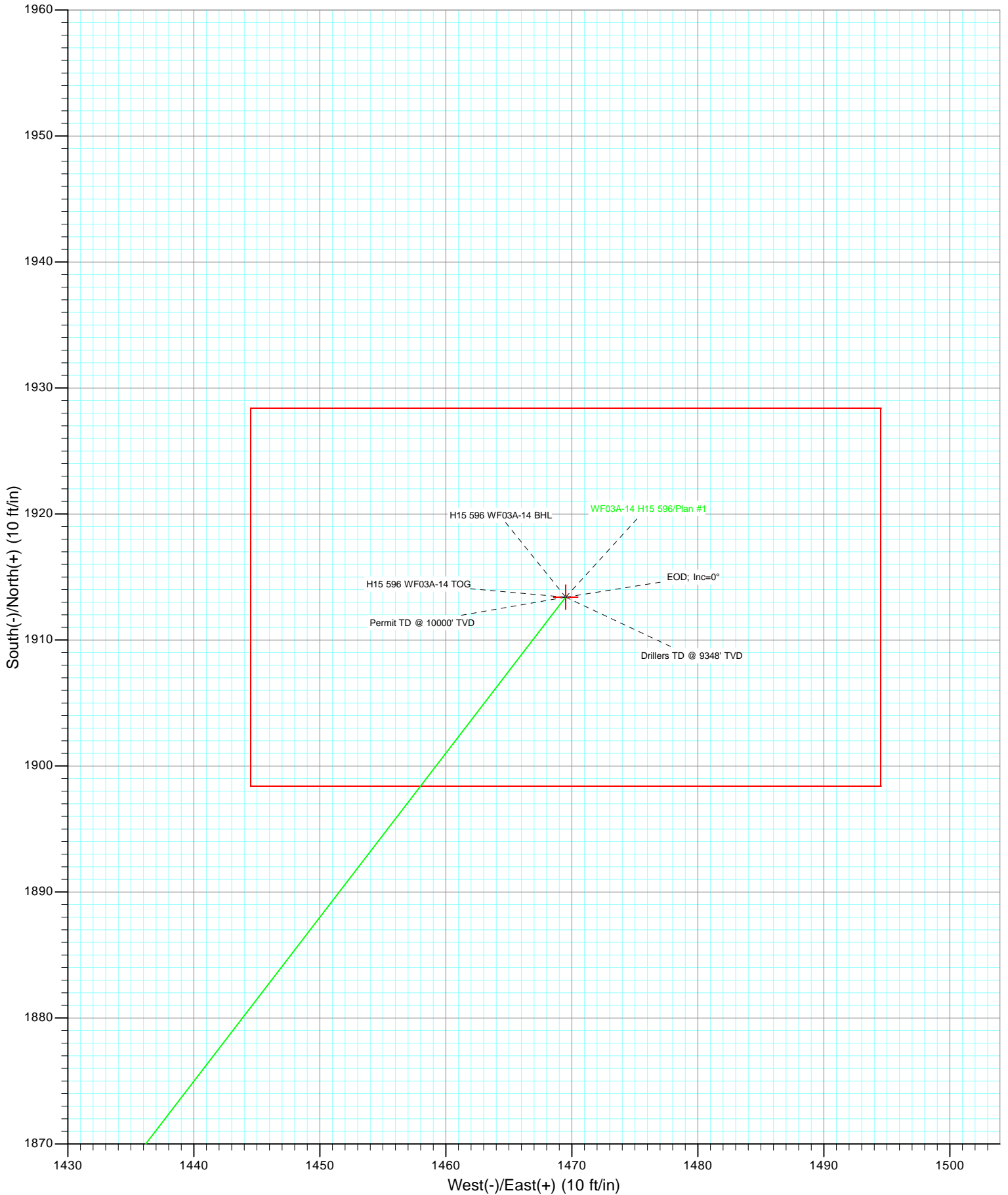


Project: North Piceance  
Site: H15 596 (S15-T5S-96W)  
Well: WF03A-14 H15 596  
Wellbore: DD  
Design: Plan #1





Project: North Piceance  
Site: H15 596 (S15-T5S-96W)  
Well: WF03A-14 H15 596  
Wellbore: DD  
Design: Plan #1



## Planning Report

<b>Database:</b>	EDM 5000.1 US Multi Users DB	<b>Local Co-ordinate Reference:</b>	Well WF03A-14 H15 596
<b>Company:</b>	EnCana Oil & Gas (USA) Inc	<b>TVD Reference:</b>	KBE @ 6453.0ft (Original Well Elev)
<b>Project:</b>	North Piceance	<b>MD Reference:</b>	KBE @ 6453.0ft (Original Well Elev)
<b>Site:</b>	H15 596 (S15-T5S-96W)	<b>North Reference:</b>	True
<b>Well:</b>	WF03A-14 H15 596	<b>Survey Calculation Method:</b>	Minimum Curvature
<b>Wellbore:</b>	DD		
<b>Design:</b>	Plan #1		

<b>Project</b>	North Piceance		
<b>Map System:</b>	US State Plane 1983	<b>System Datum:</b>	Mean Sea Level
<b>Geo Datum:</b>	North American Datum 1983		
<b>Map Zone:</b>	Colorado Central Zone		

<b>Site</b>	H15 596 (S15-T5S-96W)				
<b>Site Position:</b>		<b>Northing:</b>	1,660,371.18 ft	<b>Latitude:</b>	39° 37' 0.09 N
<b>From:</b>	Lat/Long	<b>Easting:</b>	2,254,528.31 ft	<b>Longitude:</b>	108° 8' 47.64 W
<b>Position Uncertainty:</b>	0.0 ft	<b>Slot Radius:</b>	13.200 in	<b>Grid Convergence:</b>	-1.67 °

<b>Well</b>	WF03A-14 H15 596					
<b>Well Position</b>	<b>+N/-S</b>	0.0 ft	<b>Northing:</b>	1,660,385.28 ft	<b>Latitude:</b>	39° 37' 0.23 N
	<b>+E/-W</b>	0.0 ft	<b>Easting:</b>	2,254,530.29 ft	<b>Longitude:</b>	108° 8' 47.62 W
<b>Position Uncertainty</b>		0.0 ft	<b>Wellhead Elevation:</b>	ft	<b>Ground Level:</b>	6,431.0 ft

<b>Wellbore</b>	DD				
<b>Magnetics</b>	<b>Model Name</b>	<b>Sample Date</b>	<b>Declination</b>	<b>Dip Angle</b>	<b>Field Strength</b>
	IGRF2010	6/7/2011	(°) 10.44	(°) 65.81	(nT) 52,295

<b>Design</b>	Plan #1			
<b>Audit Notes:</b>				
<b>Version:</b>	<b>Phase:</b>	PLAN	<b>Tie On Depth:</b>	0.0
<b>Vertical Section:</b>	<b>Depth From (TVD)</b>	<b>+N/-S</b>	<b>+E/-W</b>	<b>Direction</b>
	(ft)	(ft)	(ft)	(°)
	0.0	0.0	0.0	37.52

Plan Sections										
Measured Depth (ft)	Inclination (°)	Azimuth (°)	Vertical Depth (ft)	+N/-S (ft)	+E/-W (ft)	Dogleg Rate (°/100ft)	Build Rate (°/100ft)	Turn Rate (°/100ft)	TFO (°)	Target
0.0	0.00	0.00	0.0	0.0	0.0	0.00	0.00	0.00	0.00	
800.0	0.00	0.00	800.0	0.0	0.0	0.00	0.00	0.00	0.00	
1,767.2	29.02	37.52	1,726.4	190.1	146.0	3.00	3.00	0.00	37.52	
5,752.7	29.02	37.52	5,211.6	1,723.3	1,323.5	0.00	0.00	0.00	0.00	
6,719.9	0.00	0.00	6,138.0	1,913.4	1,469.5	3.00	-3.00	0.00	180.00	H15 596 WF03A-14 T
9,779.9	0.00	0.00	9,198.0	1,913.4	1,469.5	0.00	0.00	0.00	0.00	H15 596 WF03A-14 E
9,929.9	0.00	0.00	9,348.0	1,913.4	1,469.5	0.00	0.00	0.00	0.00	
10,581.9	0.00	0.00	10,000.0	1,913.4	1,469.5	0.00	0.00	0.00	0.00	

## Planning Report

<b>Database:</b>	EDM 5000.1 US Multi Users DB	<b>Local Co-ordinate Reference:</b>	Well WF03A-14 H15 596
<b>Company:</b>	EnCana Oil & Gas (USA) Inc	<b>TVD Reference:</b>	KBE @ 6453.0ft (Original Well Elev)
<b>Project:</b>	North Piceance	<b>MD Reference:</b>	KBE @ 6453.0ft (Original Well Elev)
<b>Site:</b>	H15 596 (S15-T5S-96W)	<b>North Reference:</b>	True
<b>Well:</b>	WF03A-14 H15 596	<b>Survey Calculation Method:</b>	Minimum Curvature
<b>Wellbore:</b>	DD		
<b>Design:</b>	Plan #1		

Planned Survey									
Measured Depth (ft)	Inclination (°)	Azimuth (°)	Vertical Depth (ft)	+N/-S (ft)	+E/-W (ft)	Vertical Section (ft)	Dogleg Rate (°/100ft)	Build Rate (°/100ft)	Comments / Formations
0.0	0.00	0.00	0.0	0.0	0.0	0.0	0.00	0.00	
30.0	0.00	0.00	30.0	0.0	0.0	0.0	0.00	0.00	
60.0	0.00	0.00	60.0	0.0	0.0	0.0	0.00	0.00	
90.0	0.00	0.00	90.0	0.0	0.0	0.0	0.00	0.00	
120.0	0.00	0.00	120.0	0.0	0.0	0.0	0.00	0.00	
150.0	0.00	0.00	150.0	0.0	0.0	0.0	0.00	0.00	
180.0	0.00	0.00	180.0	0.0	0.0	0.0	0.00	0.00	
210.0	0.00	0.00	210.0	0.0	0.0	0.0	0.00	0.00	
240.0	0.00	0.00	240.0	0.0	0.0	0.0	0.00	0.00	
270.0	0.00	0.00	270.0	0.0	0.0	0.0	0.00	0.00	
300.0	0.00	0.00	300.0	0.0	0.0	0.0	0.00	0.00	
330.0	0.00	0.00	330.0	0.0	0.0	0.0	0.00	0.00	
360.0	0.00	0.00	360.0	0.0	0.0	0.0	0.00	0.00	
390.0	0.00	0.00	390.0	0.0	0.0	0.0	0.00	0.00	
420.0	0.00	0.00	420.0	0.0	0.0	0.0	0.00	0.00	
450.0	0.00	0.00	450.0	0.0	0.0	0.0	0.00	0.00	
480.0	0.00	0.00	480.0	0.0	0.0	0.0	0.00	0.00	
510.0	0.00	0.00	510.0	0.0	0.0	0.0	0.00	0.00	
540.0	0.00	0.00	540.0	0.0	0.0	0.0	0.00	0.00	
570.0	0.00	0.00	570.0	0.0	0.0	0.0	0.00	0.00	
600.0	0.00	0.00	600.0	0.0	0.0	0.0	0.00	0.00	
630.0	0.00	0.00	630.0	0.0	0.0	0.0	0.00	0.00	
660.0	0.00	0.00	660.0	0.0	0.0	0.0	0.00	0.00	
690.0	0.00	0.00	690.0	0.0	0.0	0.0	0.00	0.00	
720.0	0.00	0.00	720.0	0.0	0.0	0.0	0.00	0.00	
750.0	0.00	0.00	750.0	0.0	0.0	0.0	0.00	0.00	
780.0	0.00	0.00	780.0	0.0	0.0	0.0	0.00	0.00	
800.0	0.00	0.00	800.0	0.0	0.0	0.0	0.00	0.00	KOP @ 800'
810.0	0.30	37.52	810.0	0.0	0.0	0.0	3.00	3.00	
840.0	1.20	37.52	840.0	0.3	0.3	0.4	3.00	3.00	
870.0	2.10	37.52	870.0	1.0	0.8	1.3	3.00	3.00	
900.0	3.00	37.52	900.0	2.1	1.6	2.6	3.00	3.00	
930.0	3.90	37.52	929.9	3.5	2.7	4.4	3.00	3.00	
960.0	4.80	37.52	959.8	5.3	4.1	6.7	3.00	3.00	
990.0	5.70	37.52	989.7	7.5	5.8	9.4	3.00	3.00	
1,020.0	6.60	37.52	1,019.5	10.0	7.7	12.7	3.00	3.00	
1,050.0	7.50	37.52	1,049.3	13.0	10.0	16.3	3.00	3.00	
1,080.0	8.40	37.52	1,079.0	16.2	12.5	20.5	3.00	3.00	
1,110.0	9.30	37.52	1,108.6	19.9	15.3	25.1	3.00	3.00	
1,140.0	10.20	37.52	1,138.2	23.9	18.4	30.2	3.00	3.00	
1,170.0	11.10	37.52	1,167.7	28.3	21.8	35.7	3.00	3.00	
1,200.0	12.00	37.52	1,197.1	33.1	25.4	41.7	3.00	3.00	
1,230.0	12.90	37.52	1,226.4	38.2	29.4	48.2	3.00	3.00	
1,260.0	13.80	37.52	1,255.6	43.7	33.6	55.1	3.00	3.00	
1,290.0	14.70	37.52	1,284.6	49.6	38.1	62.5	3.00	3.00	
1,320.0	15.60	37.52	1,313.6	55.8	42.9	70.4	3.00	3.00	
1,350.0	16.50	37.52	1,342.4	62.4	47.9	78.6	3.00	3.00	
1,380.0	17.40	37.52	1,371.1	69.3	53.2	87.4	3.00	3.00	
1,410.0	18.30	37.52	1,399.7	76.6	58.8	96.6	3.00	3.00	
1,440.0	19.20	37.52	1,428.1	84.3	64.7	106.2	3.00	3.00	
1,470.0	20.10	37.52	1,456.3	92.3	70.9	116.3	3.00	3.00	
1,500.0	21.00	37.52	1,484.4	100.6	77.3	126.9	3.00	3.00	

## Planning Report

<b>Database:</b>	EDM 5000.1 US Multi Users DB	<b>Local Co-ordinate Reference:</b>	Well WF03A-14 H15 596
<b>Company:</b>	EnCana Oil & Gas (USA) Inc	<b>TVD Reference:</b>	KBE @ 6453.0ft (Original Well Elev)
<b>Project:</b>	North Piceance	<b>MD Reference:</b>	KBE @ 6453.0ft (Original Well Elev)
<b>Site:</b>	H15 596 (S15-T5S-96W)	<b>North Reference:</b>	True
<b>Well:</b>	WF03A-14 H15 596	<b>Survey Calculation Method:</b>	Minimum Curvature
<b>Wellbore:</b>	DD		
<b>Design:</b>	Plan #1		

Planned Survey									
Measured Depth (ft)	Inclination (°)	Azimuth (°)	Vertical Depth (ft)	+N/-S (ft)	+E/-W (ft)	Vertical Section (ft)	Dogleg Rate (°/100ft)	Build Rate (°/100ft)	Comments / Formations
1,530.0	21.90	37.52	1,512.4	109.3	83.9	137.8	3.00	3.00	
1,560.0	22.80	37.52	1,540.1	118.4	90.9	149.2	3.00	3.00	
1,590.0	23.70	37.52	1,567.7	127.7	98.1	161.1	3.00	3.00	
1,620.0	24.60	37.52	1,595.0	137.5	105.6	173.3	3.00	3.00	
1,650.0	25.50	37.52	1,622.2	147.6	113.3	186.0	3.00	3.00	
1,680.0	26.40	37.52	1,649.2	158.0	121.3	199.2	3.00	3.00	
1,710.0	27.30	37.52	1,676.0	168.7	129.6	212.7	3.00	3.00	
1,740.0	28.20	37.52	1,702.5	179.8	138.1	226.7	3.00	3.00	
1,767.2	29.02	37.52	1,726.4	190.1	146.0	239.7	3.00	3.00	EOB; Inc=29°
1,770.0	29.02	37.52	1,728.8	191.2	146.8	241.1	0.00	0.00	
1,800.0	29.02	37.52	1,755.1	202.7	155.7	255.6	0.00	0.00	
1,830.0	29.02	37.52	1,781.3	214.3	164.6	270.2	0.00	0.00	
1,860.0	29.02	37.52	1,807.5	225.8	173.4	284.7	0.00	0.00	
1,890.0	29.02	37.52	1,833.8	237.4	182.3	299.3	0.00	0.00	
1,920.0	29.02	37.52	1,860.0	248.9	191.2	313.8	0.00	0.00	
1,950.0	29.02	37.52	1,886.2	260.4	200.0	328.4	0.00	0.00	
1,980.0	29.02	37.52	1,912.5	272.0	208.9	342.9	0.00	0.00	
2,010.0	29.02	37.52	1,938.7	283.5	217.7	357.5	0.00	0.00	
2,040.0	29.02	37.52	1,964.9	295.1	226.6	372.0	0.00	0.00	
2,070.0	29.02	37.52	1,991.2	306.6	235.5	386.6	0.00	0.00	
2,100.0	29.02	37.52	2,017.4	318.1	244.3	401.1	0.00	0.00	
2,130.0	29.02	37.52	2,043.6	329.7	253.2	415.7	0.00	0.00	
2,160.0	29.02	37.52	2,069.9	341.2	262.1	430.2	0.00	0.00	
2,190.0	29.02	37.52	2,096.1	352.8	270.9	444.8	0.00	0.00	
2,220.0	29.02	37.52	2,122.4	364.3	279.8	459.3	0.00	0.00	
2,250.0	29.02	37.52	2,148.6	375.8	288.7	473.9	0.00	0.00	
2,280.0	29.02	37.52	2,174.8	387.4	297.5	488.5	0.00	0.00	
2,310.0	29.02	37.52	2,201.1	398.9	306.4	503.0	0.00	0.00	
2,340.0	29.02	37.52	2,227.3	410.5	315.2	517.6	0.00	0.00	
2,370.0	29.02	37.52	2,253.5	422.0	324.1	532.1	0.00	0.00	
2,400.0	29.02	37.52	2,279.8	433.5	333.0	546.7	0.00	0.00	
2,430.0	29.02	37.52	2,306.0	445.1	341.8	561.2	0.00	0.00	
2,460.0	29.02	37.52	2,332.2	456.6	350.7	575.8	0.00	0.00	
2,490.0	29.02	37.52	2,358.5	468.2	359.6	590.3	0.00	0.00	

Targets									
Target Name	Dip Angle (°)	Dip Dir. (°)	TVD (ft)	+N/-S (ft)	+E/-W (ft)	Northing (ft)	Easting (ft)	Latitude	Longitude
H15 596 WF03A-14 TOC - hit/miss target - Shape	0.00	0.00	6,138.0	1,913.4	1,469.5	1,662,255.06	2,256,054.91	39° 37' 19.14 N	108° 8' 28.84 W
- plan misses target center by 4195.9ft at 2490.0ft MD (2358.5 TVD, 468.2 N, 359.6 E)									
- Point									
H15 596 WF03A-14 BHL	0.00	0.00	9,198.0	1,913.4	1,469.5	1,662,255.06	2,256,054.91	39° 37' 19.14 N	108° 8' 28.84 W
- plan misses target center by 7078.1ft at 2490.0ft MD (2358.5 TVD, 468.2 N, 359.6 E)									
- Rectangle (sides W30.0 H50.0 D0.0)									

## Planning Report

<b>Database:</b>	EDM 5000.1 US Multi Users DB	<b>Local Co-ordinate Reference:</b>	Well WF03A-14 H15 596
<b>Company:</b>	EnCana Oil & Gas (USA) Inc	<b>TVD Reference:</b>	KBE @ 6453.0ft (Original Well Elev)
<b>Project:</b>	North Piceance	<b>MD Reference:</b>	KBE @ 6453.0ft (Original Well Elev)
<b>Site:</b>	H15 596 (S15-T5S-96W)	<b>North Reference:</b>	True
<b>Well:</b>	WF03A-14 H15 596	<b>Survey Calculation Method:</b>	Minimum Curvature
<b>Wellbore:</b>	DD		
<b>Design:</b>	Plan #1		

Planned Survey									
Measured Depth (ft)	Inclination (°)	Azimuth (°)	Vertical Depth (ft)	+N/-S (ft)	+E/-W (ft)	Vertical Section (ft)	Dogleg Rate (°/100ft)	Build Rate (°/100ft)	Comments / Formations
2,500.0	29.02	37.52	2,367.2	472.0	362.5	595.2	0.00	0.00	
2,600.0	29.02	37.52	2,454.7	510.5	392.1	643.7	0.00	0.00	
2,700.0	29.02	37.52	2,542.1	549.0	421.6	692.2	0.00	0.00	
2,800.0	29.02	37.52	2,629.6	587.4	451.1	740.7	0.00	0.00	
2,900.0	29.02	37.52	2,717.0	625.9	480.7	789.2	0.00	0.00	
3,000.0	29.02	37.52	2,804.5	664.4	510.2	837.7	0.00	0.00	
3,100.0	29.02	37.52	2,891.9	702.8	539.8	886.2	0.00	0.00	
3,200.0	29.02	37.52	2,979.3	741.3	569.3	934.7	0.00	0.00	
3,300.0	29.02	37.52	3,066.8	779.8	598.9	983.2	0.00	0.00	
3,400.0	29.02	37.52	3,154.2	818.2	628.4	1,031.7	0.00	0.00	
3,500.0	29.02	37.52	3,241.7	856.7	658.0	1,080.2	0.00	0.00	
3,600.0	29.02	37.52	3,329.1	895.2	687.5	1,128.7	0.00	0.00	
3,700.0	29.02	37.52	3,416.6	933.6	717.1	1,177.2	0.00	0.00	
3,800.0	29.02	37.52	3,504.0	972.1	746.6	1,225.7	0.00	0.00	
3,900.0	29.02	37.52	3,591.5	1,010.6	776.1	1,274.2	0.00	0.00	
4,000.0	29.02	37.52	3,678.9	1,049.1	805.7	1,322.7	0.00	0.00	
4,100.0	29.02	37.52	3,766.4	1,087.5	835.2	1,371.2	0.00	0.00	
4,200.0	29.02	37.52	3,853.8	1,126.0	864.8	1,419.7	0.00	0.00	
4,300.0	29.02	37.52	3,941.3	1,164.5	894.3	1,468.3	0.00	0.00	
4,400.0	29.02	37.52	4,028.7	1,202.9	923.9	1,516.8	0.00	0.00	
4,500.0	29.02	37.52	4,116.2	1,241.4	953.4	1,565.3	0.00	0.00	
4,600.0	29.02	37.52	4,203.6	1,279.9	983.0	1,613.8	0.00	0.00	
4,700.0	29.02	37.52	4,291.1	1,318.3	1,012.5	1,662.3	0.00	0.00	
4,800.0	29.02	37.52	4,378.5	1,356.8	1,042.0	1,710.8	0.00	0.00	
4,900.0	29.02	37.52	4,466.0	1,395.3	1,071.6	1,759.3	0.00	0.00	
5,000.0	29.02	37.52	4,553.4	1,433.7	1,101.1	1,807.8	0.00	0.00	
5,100.0	29.02	37.52	4,640.9	1,472.2	1,130.7	1,856.3	0.00	0.00	
5,200.0	29.02	37.52	4,728.3	1,510.7	1,160.2	1,904.8	0.00	0.00	
5,300.0	29.02	37.52	4,815.8	1,549.2	1,189.8	1,953.3	0.00	0.00	
5,400.0	29.02	37.52	4,903.2	1,587.6	1,219.3	2,001.8	0.00	0.00	
5,500.0	29.02	37.52	4,990.7	1,626.1	1,248.9	2,050.3	0.00	0.00	
5,600.0	29.02	37.52	5,078.1	1,664.6	1,278.4	2,098.8	0.00	0.00	
5,700.0	29.02	37.52	5,165.6	1,703.0	1,307.9	2,147.3	0.00	0.00	
5,752.7	29.02	37.52	5,211.6	1,723.3	1,323.5	2,172.9	0.00	0.00	Start Drop -3.00
5,800.0	27.60	37.52	5,253.3	1,741.1	1,337.2	2,195.3	3.00	-3.00	
5,900.0	24.60	37.52	5,343.1	1,776.0	1,364.0	2,239.3	3.00	-3.00	
6,000.0	21.60	37.52	5,435.1	1,807.1	1,387.9	2,278.5	3.00	-3.00	
6,100.0	18.60	37.52	5,529.0	1,834.3	1,408.8	2,312.9	3.00	-3.00	
6,172.4	16.42	37.52	5,598.0	1,851.6	1,422.0	2,334.7	3.00	-3.00	WF (TVD)
6,200.0	15.60	37.52	5,624.5	1,857.6	1,426.7	2,342.3	3.00	-3.00	
6,214.0	15.18	37.52	5,638.0	1,860.6	1,428.9	2,346.0	3.00	-3.00	TOG (TVD)
6,300.0	12.60	37.52	5,721.5	1,876.9	1,441.5	2,366.6	3.00	-3.00	
6,400.0	9.60	37.52	5,819.6	1,892.2	1,453.2	2,385.9	3.00	-3.00	
6,500.0	6.60	37.52	5,918.6	1,903.4	1,461.8	2,399.9	3.00	-3.00	
6,600.0	3.60	37.52	6,018.2	1,910.4	1,467.2	2,408.8	3.00	-3.00	
6,700.0	0.60	37.52	6,118.1	1,913.3	1,469.5	2,412.5	3.00	-3.00	
6,719.9	0.00	0.00	6,138.0	1,913.4	1,469.5	2,412.6	3.00	-3.00	EOD; Inc=0° - H15 596 WF03A-14 TOG
6,800.0	0.00	0.00	6,218.1	1,913.4	1,469.5	2,412.6	0.00	0.00	
6,900.0	0.00	0.00	6,318.1	1,913.4	1,469.5	2,412.6	0.00	0.00	
7,000.0	0.00	0.00	6,418.1	1,913.4	1,469.5	2,412.6	0.00	0.00	
7,100.0	0.00	0.00	6,518.1	1,913.4	1,469.5	2,412.6	0.00	0.00	
7,200.0	0.00	0.00	6,618.1	1,913.4	1,469.5	2,412.6	0.00	0.00	

## Planning Report

<b>Database:</b>	EDM 5000.1 US Multi Users DB	<b>Local Co-ordinate Reference:</b>	Well WF03A-14 H15 596
<b>Company:</b>	EnCana Oil & Gas (USA) Inc	<b>TVD Reference:</b>	KBE @ 6453.0ft (Original Well Elev)
<b>Project:</b>	North Piceance	<b>MD Reference:</b>	KBE @ 6453.0ft (Original Well Elev)
<b>Site:</b>	H15 596 (S15-T5S-96W)	<b>North Reference:</b>	True
<b>Well:</b>	WF03A-14 H15 596	<b>Survey Calculation Method:</b>	Minimum Curvature
<b>Wellbore:</b>	DD		
<b>Design:</b>	Plan #1		

Planned Survey									
Measured Depth (ft)	Inclination (°)	Azimuth (°)	Vertical Depth (ft)	+N/-S (ft)	+E/-W (ft)	Vertical Section (ft)	Dogleg Rate (°/100ft)	Build Rate (°/100ft)	Comments / Formations
7,300.0	0.00	0.00	6,718.1	1,913.4	1,469.5	2,412.6	0.00	0.00	
7,400.0	0.00	0.00	6,818.1	1,913.4	1,469.5	2,412.6	0.00	0.00	
7,500.0	0.00	0.00	6,918.1	1,913.4	1,469.5	2,412.6	0.00	0.00	
7,600.0	0.00	0.00	7,018.1	1,913.4	1,469.5	2,412.6	0.00	0.00	
7,700.0	0.00	0.00	7,118.1	1,913.4	1,469.5	2,412.6	0.00	0.00	
7,800.0	0.00	0.00	7,218.1	1,913.4	1,469.5	2,412.6	0.00	0.00	
7,900.0	0.00	0.00	7,318.1	1,913.4	1,469.5	2,412.6	0.00	0.00	
8,000.0	0.00	0.00	7,418.1	1,913.4	1,469.5	2,412.6	0.00	0.00	
8,100.0	0.00	0.00	7,518.1	1,913.4	1,469.5	2,412.6	0.00	0.00	
8,200.0	0.00	0.00	7,618.1	1,913.4	1,469.5	2,412.6	0.00	0.00	
8,300.0	0.00	0.00	7,718.1	1,913.4	1,469.5	2,412.6	0.00	0.00	
8,400.0	0.00	0.00	7,818.1	1,913.4	1,469.5	2,412.6	0.00	0.00	
8,500.0	0.00	0.00	7,918.1	1,913.4	1,469.5	2,412.6	0.00	0.00	
8,600.0	0.00	0.00	8,018.1	1,913.4	1,469.5	2,412.6	0.00	0.00	
8,700.0	0.00	0.00	8,118.1	1,913.4	1,469.5	2,412.6	0.00	0.00	
8,800.0	0.00	0.00	8,218.1	1,913.4	1,469.5	2,412.6	0.00	0.00	
8,900.0	0.00	0.00	8,318.1	1,913.4	1,469.5	2,412.6	0.00	0.00	
9,000.0	0.00	0.00	8,418.1	1,913.4	1,469.5	2,412.6	0.00	0.00	
9,100.0	0.00	0.00	8,518.1	1,913.4	1,469.5	2,412.6	0.00	0.00	
9,200.0	0.00	0.00	8,618.1	1,913.4	1,469.5	2,412.6	0.00	0.00	
9,300.0	0.00	0.00	8,718.1	1,913.4	1,469.5	2,412.6	0.00	0.00	
9,400.0	0.00	0.00	8,818.1	1,913.4	1,469.5	2,412.6	0.00	0.00	
9,500.0	0.00	0.00	8,918.1	1,913.4	1,469.5	2,412.6	0.00	0.00	
9,600.0	0.00	0.00	9,018.1	1,913.4	1,469.5	2,412.6	0.00	0.00	
9,700.0	0.00	0.00	9,118.1	1,913.4	1,469.5	2,412.6	0.00	0.00	
9,779.9	0.00	0.00	9,198.0	1,913.4	1,469.5	2,412.6	0.00	0.00	Rins (TVD) - H15 596 WF03A-14 BHL
9,800.0	0.00	0.00	9,218.1	1,913.4	1,469.5	2,412.6	0.00	0.00	
9,900.0	0.00	0.00	9,318.1	1,913.4	1,469.5	2,412.6	0.00	0.00	
9,929.9	0.00	0.00	9,348.0	1,913.4	1,469.5	2,412.6	0.00	0.00	Drillers TD @ 9348' TVD
10,000.0	0.00	0.00	9,418.1	1,913.4	1,469.5	2,412.6	0.00	0.00	
10,100.0	0.00	0.00	9,518.1	1,913.4	1,469.5	2,412.6	0.00	0.00	
10,200.0	0.00	0.00	9,618.1	1,913.4	1,469.5	2,412.6	0.00	0.00	
10,300.0	0.00	0.00	9,718.1	1,913.4	1,469.5	2,412.6	0.00	0.00	
10,400.0	0.00	0.00	9,818.1	1,913.4	1,469.5	2,412.6	0.00	0.00	
10,500.0	0.00	0.00	9,918.1	1,913.4	1,469.5	2,412.6	0.00	0.00	
10,581.9	0.00	0.00	10,000.0	1,913.4	1,469.5	2,412.6	0.00	0.00	

Targets										
Target Name	- hit/miss target	Dip Angle (°)	Dip Dir. (°)	TVD (ft)	+N/-S (ft)	+E/-W (ft)	Northing (ft)	Easting (ft)	Latitude	Longitude
H15 596 WF03A-14 TOC	- plan hits target center	0.00	0.00	6,138.0	1,913.4	1,469.5	1,662,255.06	2,256,054.91	39° 37' 19.14 N	108° 8' 28.84 W
	- Point									
H15 596 WF03A-14 BHL	- plan hits target center	0.00	0.00	9,198.0	1,913.4	1,469.5	1,662,255.06	2,256,054.91	39° 37' 19.14 N	108° 8' 28.84 W
	- Rectangle (sides W30.0 H50.0 D0.0)									

## Planning Report

<b>Database:</b> EDM 5000.1 US Multi Users DB	<b>Local Co-ordinate Reference:</b> Well WF03A-14 H15 596
<b>Company:</b> EnCana Oil & Gas (USA) Inc	<b>TVD Reference:</b> KBE @ 6453.0ft (Original Well Elev)
<b>Project:</b> North Piceance	<b>MD Reference:</b> KBE @ 6453.0ft (Original Well Elev)
<b>Site:</b> H15 596 (S15-T5S-96W)	<b>North Reference:</b> True
<b>Well:</b> WF03A-14 H15 596	<b>Survey Calculation Method:</b> Minimum Curvature
<b>Wellbore:</b> DD	
<b>Design:</b> Plan #1	

Formations					
Measured Depth (ft)	Vertical Depth (ft)	Name	Lithology	Dip (°)	Dip Direction (°)
6,172.4	5,598.0	WF (TVD)		0.00	
6,214.0	5,638.0	TOG (TVD)		0.00	
9,779.9	9,198.0	Rlns (TVD)		0.00	

Plan Annotations				
Measured Depth (ft)	Vertical Depth (ft)	Local Coordinates		Comment
		+N/-S (ft)	+E/-W (ft)	
800.0	800.0	0.0	0.0	KOP @ 800'
1,767.2	1,726.4	190.1	146.0	EOB; Inc=29°
5,752.7	5,211.6	1,723.3	1,323.5	Start Drop -3.00
6,719.9	6,138.0	1,913.4	1,469.5	EOD; Inc=0°
9,929.9	9,348.0	1,913.4	1,469.5	Drillers TD @ 9348' TVD
10,581.9	10,000.0	1,913.4	1,469.5	Permit TD @ 10000' TVD