

EOG RESOURCES, INC.

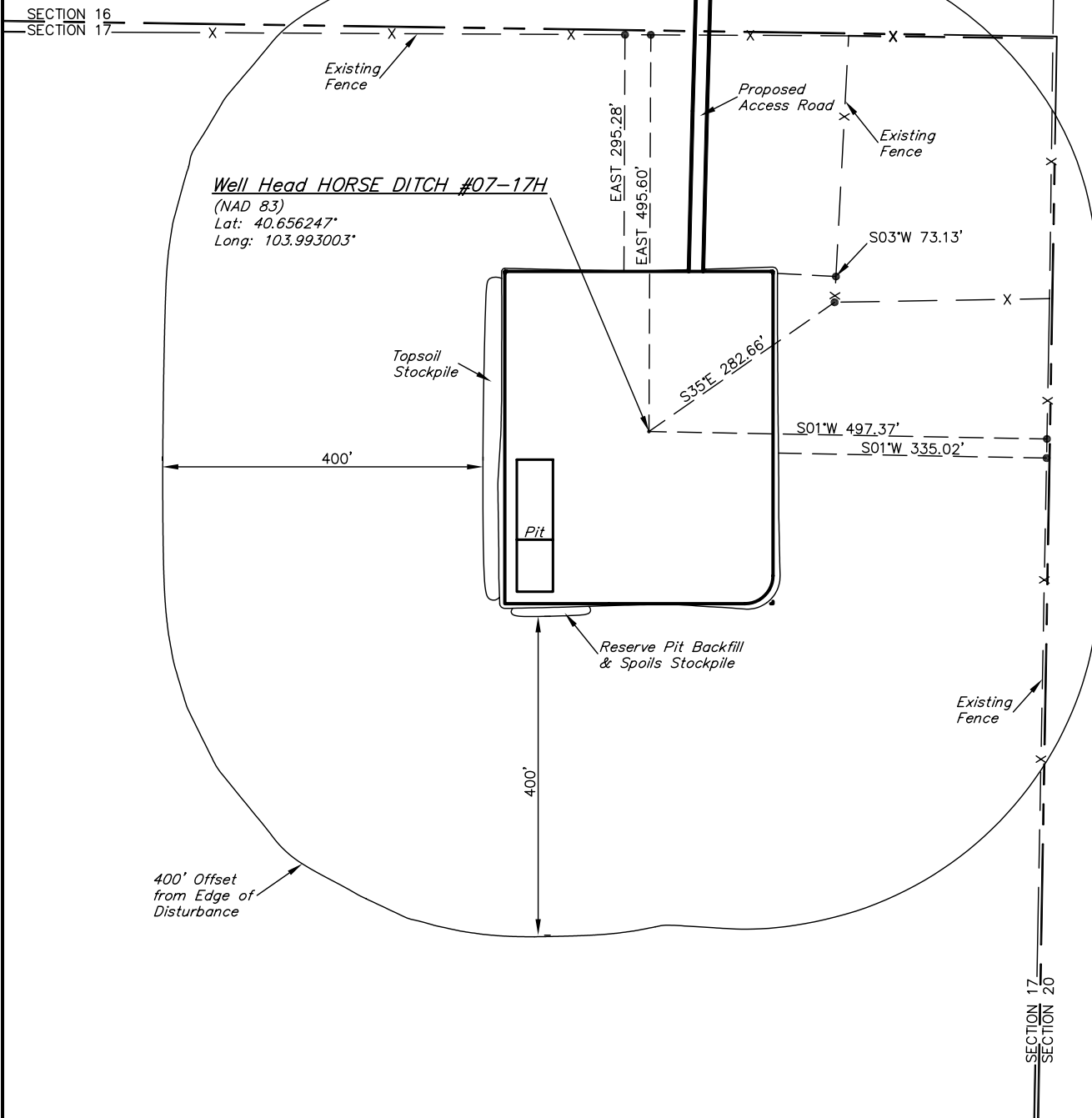
ADDENDUM TO LEGAL PLAT FOR

HORSE DITCH #07-17H
SECTION 17, T8N, R59W, 6th. P.M.
501' FSL 501' FEL

SCALE: 1" = 200'

DATE: 01-12-11

DRAWN BY: J.I.



UINTAH ENGINEERING & LAND SURVEYING

85 So. 200 East * Vernal, Utah 84078 * (435) 789-1017

EOG RESOURCES, INC.

CONSTRUCTION LAYOUT FOR

HORSE DITCH #07-17H

SECTION 17, T8N, R59W, 6th. P.M.

501' FSL 501' FEL

FIGURE #1

SCALE: 1" = 60'

DATE: 01-12-11

DRAWN BY: J.I.

Elev. Ungraded Ground At Loc. Stake = **4834.7'**
 FINISHED GRADE ELEV. AT LOC. STAKE = **4833.8'**

UINTAH ENGINEERING & LAND SURVEYING
 85 So. 200 East * Vernal, Utah 84078 * (435) 789-1017

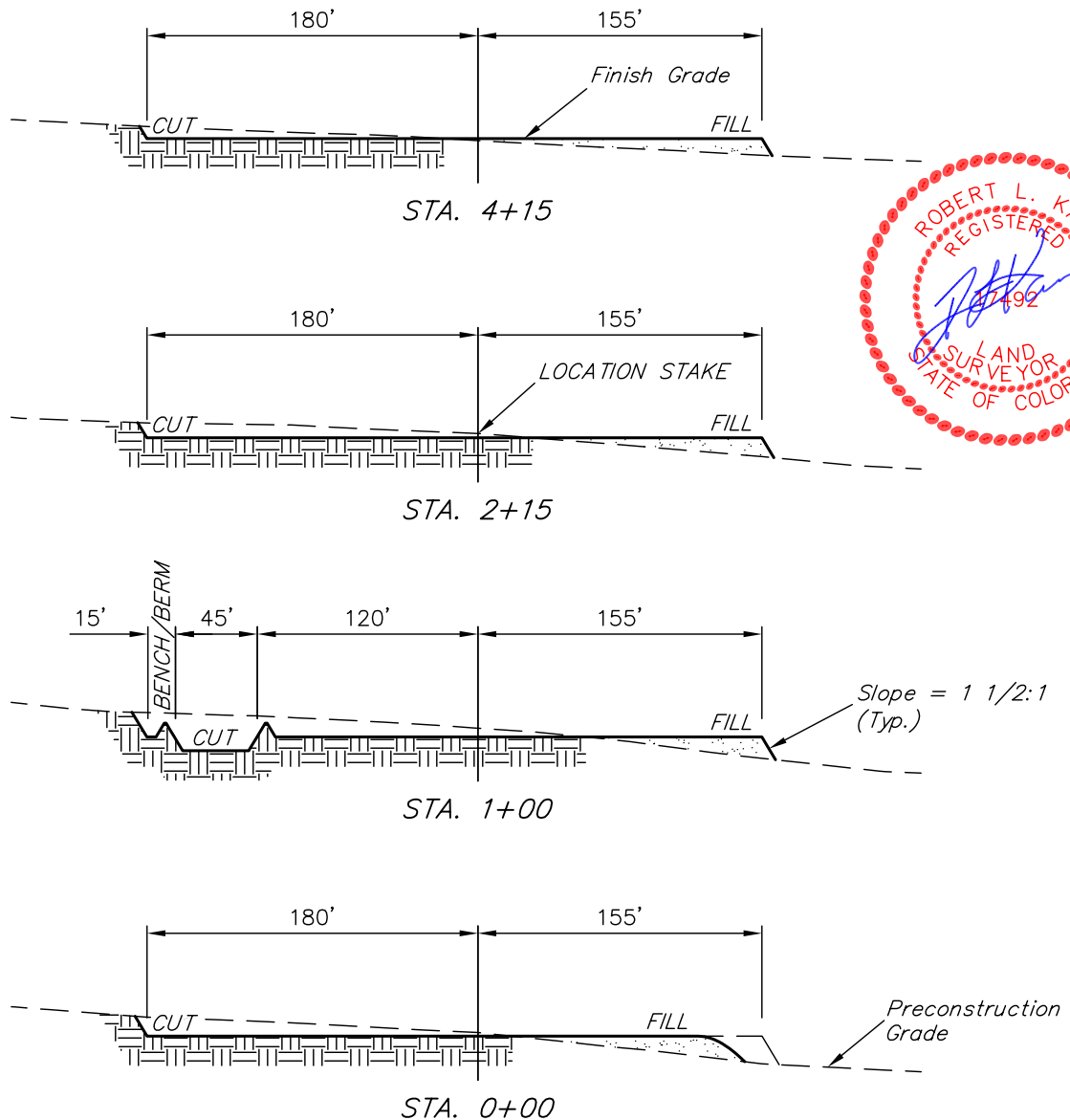
UINTAH ENGINEERING & LAND SURVEYING
85 So. 200 East * Vernal, Utah 84078 * (435) 789-1017

EOG RESOURCES, INC.

FIGURE #2

CONSTRUCTION LAYOUT CROSS SECTIONS FOR HORSE DITCH #07-17H SECTION 17, T8N, R59W, 6th. P.M. 501' FSL 501' FEL

X-Section
Scale
1" = 100'
DATE: 01-12-11
DRAWN BY: J.I.



NOTE:

Topsoil should not be Stripped Below Finished Grade on Substructure Area.

APPROXIMATE ACREAGES

WELL SITE DISTURBANCE = ± 4.069 ACRES
ACCESS ROAD DISTURBANCE = ± 4.093 ACRES
TOTAL = ± 8.162 ACRES

* NOTE:

FILL QUANTITY INCLUDES 5% FOR COMPACTION

APPROXIMATE YARDAGES

(6") Topsoil Stripping = 2,760 Cu. Yds.
Remaining Location = 6,300 Cu. Yds.
TOTAL CUT = 9,060 CU.YDS.
FILL = 5,950 CU.YDS.

EXCESS MATERIAL = 3,110 Cu. Yds.
Topsoil & Pit Backfill = 3,110 Cu. Yds.
(1/2 Pit Vol.)
EXCESS UNBALANCE = 0 Cu. Yds.
(After Interim Rehabilitation)

UINTAH ENGINEERING & LAND SURVEYING
85 So. 200 East * Vernal, Utah 84078 * (435) 789-1017

EOG RESOURCES, INC.

TYPICAL RIG LAYOUT FOR

HORSE DITCH #07-17H
SECTION 17, T8N, R59W, 6th. P.M.
501' FSL 501' FEL

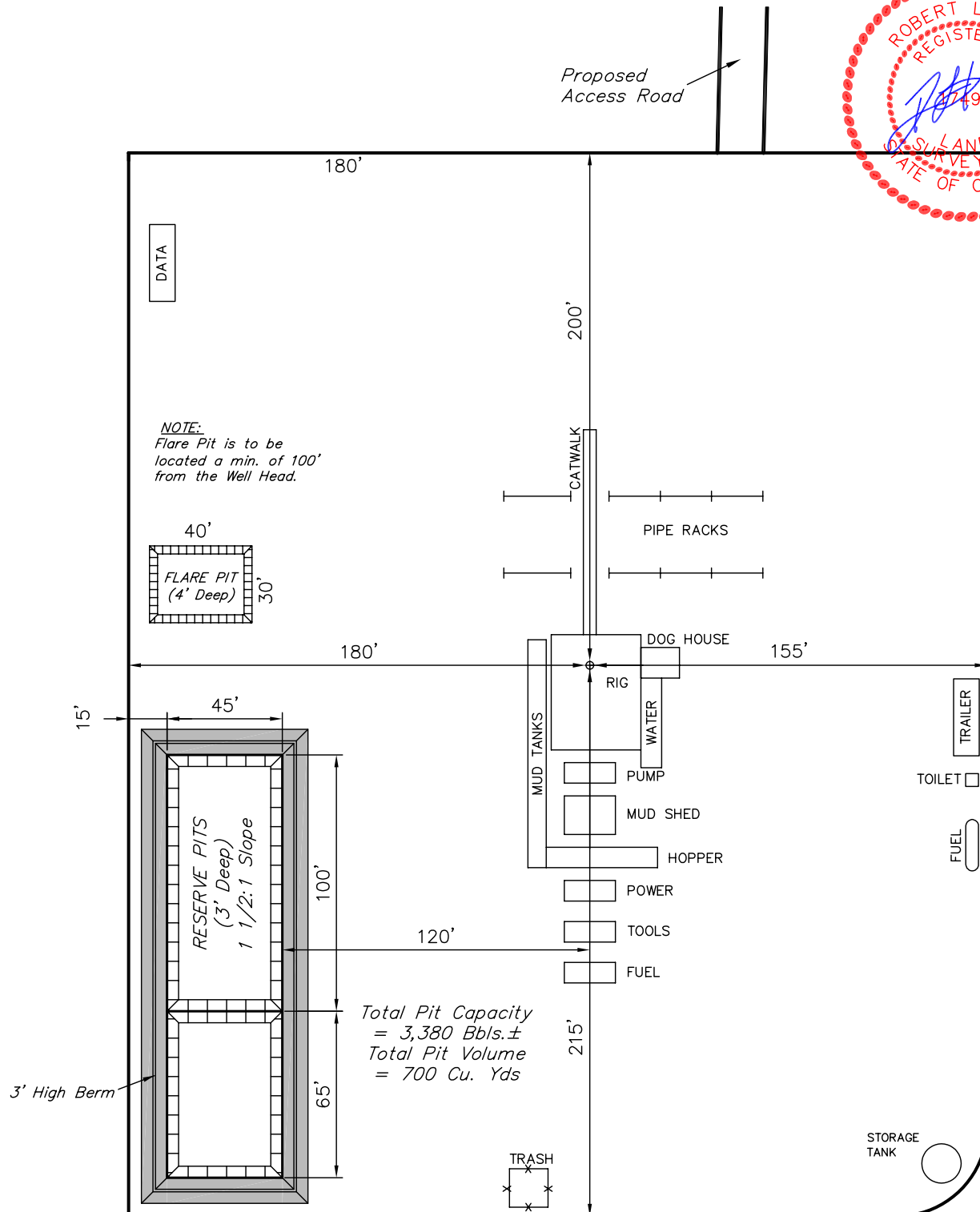
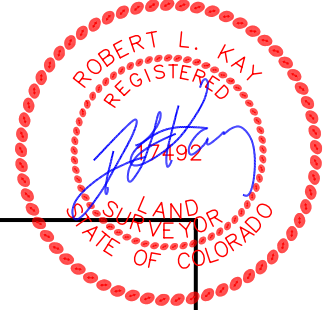
FIGURE #3

SCALE: 1" = 60'

DATE: 01-12-11

DRAWN BY: J.I.

Proposed
Access Road



UINTAH ENGINEERING & LAND SURVEYING

85 So. 200 East * Vernal, Utah 84078 * (435) 789-1017

EOG RESOURCES, INC.
RECLAMATION DIAGRAM FOR
HORSE DITCH #07-17H
SECTION 17, T8N, R59W, 6th. P.M.
501' FSL 501' FEL

FIGURE #4

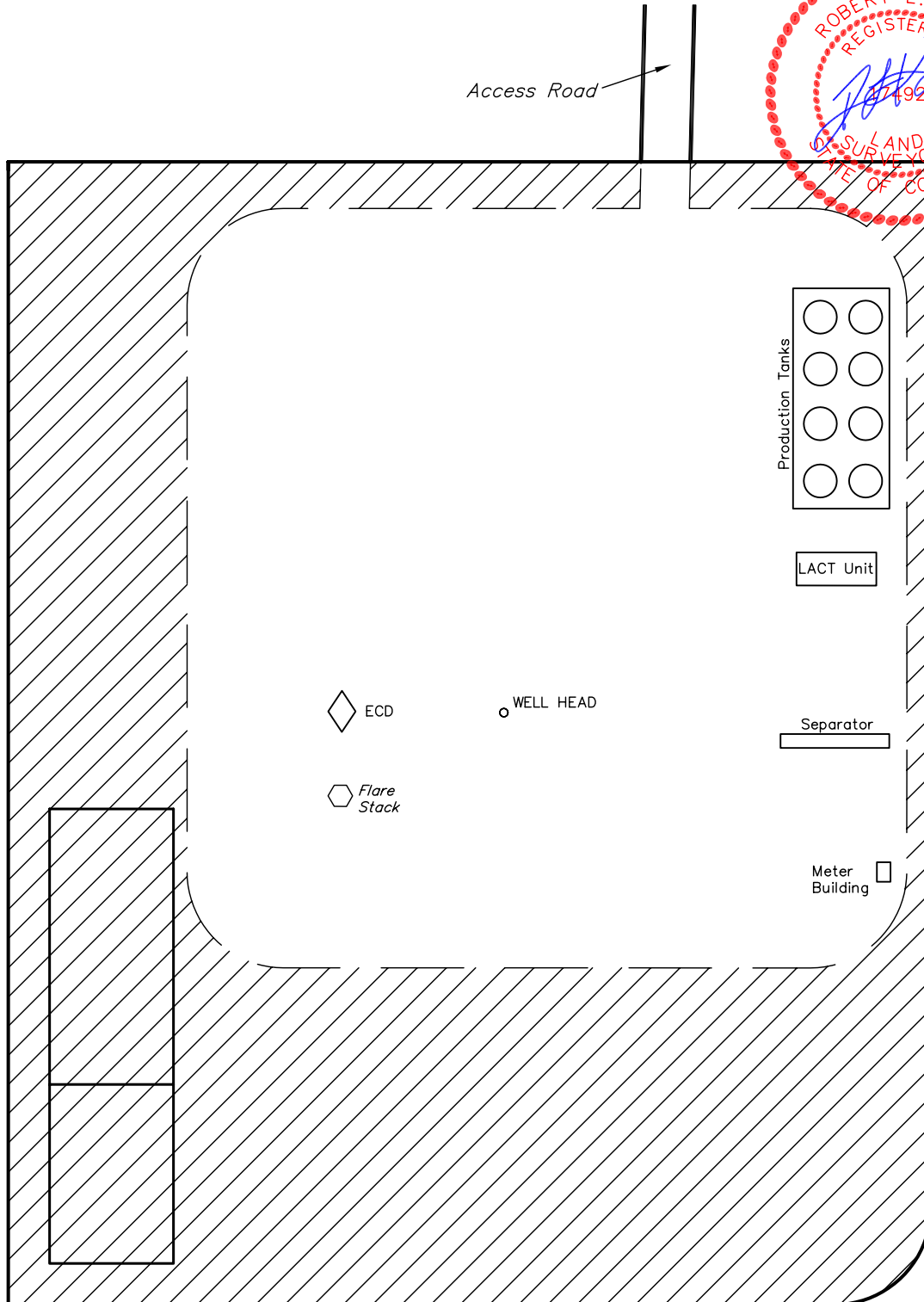
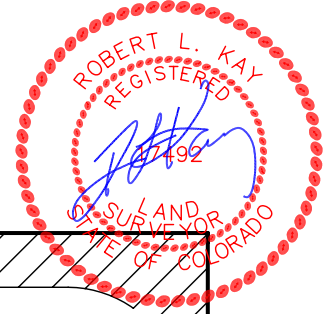
SCALE: 1" = 60'

DATE: 01-12-11

DRAWN BY: J.I.



Access Road



APPROXIMATE ACREAGES
UN-RECLAIMED = ± 1.638 ACRES

 RECLAIMED AREA

UINTAH ENGINEERING & LAND SURVEYING
85 So. 200 East * Vernal, Utah 84078 * (435) 789-1017

EOG RESOURCES, INC.

LOCATION DRAWING FOR

HORSE DITCH #07-17H
SECTION 17, T8N, R59W, 6th. P.M.
501' FSL 501' FEL

FIGURE #5

NE Cor. Sec. 17
2010 UELS Alum.
Cap, 0.3' High,
Rebar
Lat: 40.669686°
Long: 103.990975°

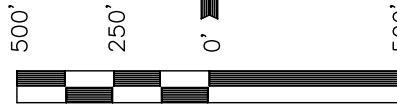


1/4 Section Line

1/4 Section Line

17

1/16 Section Line



SCALE
DATE: 01-12-11
DRAWN BY: J.I.

1/16 Section Line

SE 1/4

LINE TABLE

| LINE | FEATURE | DIRECTION | LENGTH |
|------|------------------|-------------|----------|
| L1 | COUNTY ROAD #115 | N87°58'00"E | 5752.00' |
| L2 | POWER LINE | N87°29'00"E | 5742.00' |

**WADE E.
CASTOR**

SW Cor. Sec. 17
2007 Private Alum.
Cap, Flush W/Ground,
LS#26964
Lat: 40.655072°
Long: 104.010361°

N89°01'34"W
2668.80' (Meas.)

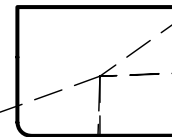
2007 Private Alum.
Cap, 0.1' High,
LS#26964
Lat: 40.654964°
Long: 104.000747°

Section Line

N89°01'40"W - 2643.95' (Meas.)

S70°13'00"W - 4443.00'
(To Water Well)

N54°36'00"E
7888.00'
(To Building)



S01°59'06"W
27.88 Miles
(To Railroad)

SOUTH
501.13'
(To Property Line)

2007 Private Alum.
Cap, Flush W/Ground,
LS#26964
Lat: 40.654853°
Long: 103.991222°

PLANT COMMUNITY

- ☐ DISTURBED GRASSLAND
- ☐ NATIVE GRASSLAND
- ☐ SHRUB LAND
- ☐ PLAINS RIPARIAN
- ☐ MOUNTAIN RIPARIAN
- ☐ FOREST LAND
- ☐ WETLANDS AQUATIC
- ☐ ALPINE
- ☐ OTHER (Describe): _____

CURRENT LAND USE

- CROP LAND: ☐ IRRIGATED ☐ DRY LAND ☐ IMPROVED PASTURE ☐ HAY MEADOW ☐ CRP
- NON-CROP LAND: ☐ RANGELAND ☐ TIMBER ☐ RECREATIONAL ☐ OTHER (Describe) _____
- SUBDIVIDED: ☐ INDUSTRIAL ☐ COMMERCIAL ☐ RESIDENTIAL

FUTURE LAND USE

- CROP LAND: ☐ IRRIGATED ☐ DRY LAND ☐ IMPROVED PASTURE ☐ HAY MEADOW ☐ CRP
- NON-CROP LAND: ☐ RANGELAND ☐ TIMBER ☐ RECREATIONAL ☐ OTHER (Describe) _____
- SUBDIVIDED: ☐ INDUSTRIAL ☐ COMMERCIAL ☐ RESIDENTIAL