

BILL BARRETT CORP

GARFIELD COUNTY, COLORADO NAD 1983

Dixon SENW-32D-23-692

Dixon Federal 22B-23-692

Wellbore #1

Plan: Design #1

Standard Planning Report

10 August, 2011

Bill Barrett Corp

Planning Report

Database:	Compass	Local Co-ordinate Reference:	Well Dixon Federal 22B-23-692
Company:	BILL BARRETT CORP	TVD Reference:	WELL @ 5964.00ft (Original Well Elev)
Project:	GARFIELD COUNTY, COLORADO NAD 1983	MD Reference:	WELL @ 5964.00ft (Original Well Elev)
Site:	Dixon SENW-32D-23-692	North Reference:	True
Well:	Dixon Federal 22B-23-692	Survey Calculation Method:	Minimum Curvature
Wellbore:	Wellbore #1		
Design:	Design #1		

Project	GARFIELD COUNTY, COLORADO NAD 1983		
Map System:	US State Plane 1983	System Datum:	Mean Sea Level
Geo Datum:	North American Datum 1983		
Map Zone:	Colorado Central Zone		

Site	Dixon SENW-32D-23-692		
Site Position:		Northing:	1,619,432.051 ft
From:	Lat/Long	Easting:	2,396,972.411 ft
Position Uncertainty:	0.00 ft	Slot Radius:	"
		Latitude:	39° 30' 52.711 N
		Longitude:	107° 38' 15.5040 W
		Grid Convergence:	-1.35 °

Well	Dixon Federal 22B-23-692		
Well Position	+N/-S	-27.70 ft	Northing:
	+E/-W	759.48 ft	Easting:
Position Uncertainty		0.00 ft	Wellhead Elevation:
			Latitude:
			Longitude:
			Ground Level:

Wellbore	Wellbore #1				
Magnetics	Model Name	Sample Date	Declination (°)	Dip Angle (°)	Field Strength (nT)
	IGRF200510	12/31/2009	10.36	65.87	52,482

Design	Design #1			
Audit Notes:				
Version:	Phase:	PROTOTYPE	Tie On Depth:	0.00
Vertical Section:	Depth From (TVD) (ft)	+N/-S (ft)	+E/-W (ft)	Direction (°)
	0.00	0.00	0.00	243.60

Plan Sections										
Measured Depth (ft)	Inclination (°)	Azimuth (°)	Vertical Depth (ft)	+N/-S (ft)	+E/-W (ft)	Dogleg Rate (°/100ft)	Build Rate (°/100ft)	Turn Rate (°/100ft)	TFO (°)	Target
0.00	0.00	0.00	0.00	0.00	0.00	0.00	0.00	0.00	0.00	
800.00	0.00	0.00	800.00	0.00	0.00	0.00	0.00	0.00	0.00	
1,060.87	6.52	243.60	1,060.31	-6.59	-13.28	2.50	2.50	0.00	243.60	
5,371.61	6.52	243.60	5,343.15	-224.30	-451.84	0.00	0.00	0.00	0.00	
5,806.40	0.00	0.00	5,777.00	-235.29	-473.98	1.50	-1.50	0.00	180.00	
7,806.40	0.00	0.00	7,777.00	-235.29	-473.98	0.00	0.00	0.00	0.00	Dixon Federal 22B-

Bill Barrett Corp

Planning Report

Database:	Compass	Local Co-ordinate Reference:	Well Dixon Federal 22B-23-692
Company:	BILL BARRETT CORP	TVD Reference:	WELL @ 5964.00ft (Original Well Elev)
Project:	GARFIELD COUNTY, COLORADO NAD 1983	MD Reference:	WELL @ 5964.00ft (Original Well Elev)
Site:	Dixon SENW-32D-23-692	North Reference:	True
Well:	Dixon Federal 22B-23-692	Survey Calculation Method:	Minimum Curvature
Wellbore:	Wellbore #1		
Design:	Design #1		

Planned Survey										
Measured Depth (ft)	Inclination (°)	Azimuth (°)	Vertical Depth (ft)	+N/-S (ft)	+E/-W (ft)	Vertical Section (ft)	Dogleg Rate (°/100ft)	Build Rate (°/100ft)	Turn Rate (°/100ft)	
0.00	0.00	0.00	0.00	0.00	0.00	0.00	0.00	0.00	0.00	
100.00	0.00	0.00	100.00	0.00	0.00	0.00	0.00	0.00	0.00	
200.00	0.00	0.00	200.00	0.00	0.00	0.00	0.00	0.00	0.00	
300.00	0.00	0.00	300.00	0.00	0.00	0.00	0.00	0.00	0.00	
400.00	0.00	0.00	400.00	0.00	0.00	0.00	0.00	0.00	0.00	
500.00	0.00	0.00	500.00	0.00	0.00	0.00	0.00	0.00	0.00	
600.00	0.00	0.00	600.00	0.00	0.00	0.00	0.00	0.00	0.00	
700.00	0.00	0.00	700.00	0.00	0.00	0.00	0.00	0.00	0.00	
800.00	0.00	0.00	800.00	0.00	0.00	0.00	0.00	0.00	0.00	
900.00	2.50	243.60	899.97	-0.97	-1.95	2.18	2.50	2.50	0.00	
1,000.00	5.00	243.60	999.75	-3.88	-7.81	8.72	2.50	2.50	0.00	
1,060.87	6.52	243.60	1,060.31	-6.59	-13.28	14.83	2.50	2.50	0.00	
1,100.00	6.52	243.60	1,099.18	-8.57	-17.27	19.28	0.00	0.00	0.00	
1,200.00	6.52	243.60	1,198.54	-13.62	-27.44	30.63	0.00	0.00	0.00	
1,300.00	6.52	243.60	1,297.89	-18.67	-37.61	41.99	0.00	0.00	0.00	
1,400.00	6.52	243.60	1,397.24	-23.72	-47.79	53.35	0.00	0.00	0.00	
1,500.00	6.52	243.60	1,496.60	-28.77	-57.96	64.71	0.00	0.00	0.00	
1,600.00	6.52	243.60	1,595.95	-33.82	-68.13	76.07	0.00	0.00	0.00	
1,700.00	6.52	243.60	1,695.30	-38.87	-78.31	87.42	0.00	0.00	0.00	
1,800.00	6.52	243.60	1,794.65	-43.92	-88.48	98.78	0.00	0.00	0.00	
1,900.00	6.52	243.60	1,894.01	-48.97	-98.65	110.14	0.00	0.00	0.00	
2,000.00	6.52	243.60	1,993.36	-54.02	-108.83	121.50	0.00	0.00	0.00	
2,100.00	6.52	243.60	2,092.71	-59.07	-119.00	132.86	0.00	0.00	0.00	
2,200.00	6.52	243.60	2,192.07	-64.12	-129.17	144.21	0.00	0.00	0.00	
2,300.00	6.52	243.60	2,291.42	-69.17	-139.35	155.57	0.00	0.00	0.00	
2,400.00	6.52	243.60	2,390.77	-74.22	-149.52	166.93	0.00	0.00	0.00	
2,500.00	6.52	243.60	2,490.12	-79.27	-159.69	178.29	0.00	0.00	0.00	
2,600.00	6.52	243.60	2,589.48	-84.32	-169.87	189.65	0.00	0.00	0.00	
2,700.00	6.52	243.60	2,688.83	-89.37	-180.04	201.00	0.00	0.00	0.00	
2,800.00	6.52	243.60	2,788.18	-94.42	-190.21	212.36	0.00	0.00	0.00	
2,900.00	6.52	243.60	2,887.54	-99.47	-200.39	223.72	0.00	0.00	0.00	
3,000.00	6.52	243.60	2,986.89	-104.52	-210.56	235.08	0.00	0.00	0.00	
3,100.00	6.52	243.60	3,086.24	-109.58	-220.73	246.44	0.00	0.00	0.00	
3,200.00	6.52	243.60	3,185.59	-114.63	-230.91	257.79	0.00	0.00	0.00	
3,300.00	6.52	243.60	3,284.95	-119.68	-241.08	269.15	0.00	0.00	0.00	
3,400.00	6.52	243.60	3,384.30	-124.73	-251.26	280.51	0.00	0.00	0.00	
3,500.00	6.52	243.60	3,483.65	-129.78	-261.43	291.87	0.00	0.00	0.00	
3,600.00	6.52	243.60	3,583.01	-134.83	-271.60	303.23	0.00	0.00	0.00	
3,700.00	6.52	243.60	3,682.36	-139.88	-281.78	314.58	0.00	0.00	0.00	
3,800.00	6.52	243.60	3,781.71	-144.93	-291.95	325.94	0.00	0.00	0.00	
3,900.00	6.52	243.60	3,881.06	-149.98	-302.12	337.30	0.00	0.00	0.00	
4,000.00	6.52	243.60	3,980.42	-155.03	-312.30	348.66	0.00	0.00	0.00	
4,100.00	6.52	243.60	4,079.77	-160.08	-322.47	360.02	0.00	0.00	0.00	
4,200.00	6.52	243.60	4,179.12	-165.13	-332.64	371.37	0.00	0.00	0.00	
4,300.00	6.52	243.60	4,278.48	-170.18	-342.82	382.73	0.00	0.00	0.00	
4,400.00	6.52	243.60	4,377.83	-175.23	-352.99	394.09	0.00	0.00	0.00	
4,500.00	6.52	243.60	4,477.18	-180.28	-363.16	405.45	0.00	0.00	0.00	
4,600.00	6.52	243.60	4,576.53	-185.33	-373.34	416.81	0.00	0.00	0.00	
4,700.00	6.52	243.60	4,675.89	-190.38	-383.51	428.16	0.00	0.00	0.00	
4,800.00	6.52	243.60	4,775.24	-195.43	-393.68	439.52	0.00	0.00	0.00	
4,900.00	6.52	243.60	4,874.59	-200.48	-403.86	450.88	0.00	0.00	0.00	
5,000.00	6.52	243.60	4,973.95	-205.53	-414.03	462.24	0.00	0.00	0.00	
5,100.00	6.52	243.60	5,073.30	-210.58	-424.20	473.60	0.00	0.00	0.00	

Bill Barrett Corp

Planning Report

Database:	Compass	Local Co-ordinate Reference:	Well Dixon Federal 22B-23-692
Company:	BILL BARRETT CORP	TVD Reference:	WELL @ 5964.00ft (Original Well Elev)
Project:	GARFIELD COUNTY, COLORADO NAD 1983	MD Reference:	WELL @ 5964.00ft (Original Well Elev)
Site:	Dixon SENW-32D-23-692	North Reference:	True
Well:	Dixon Federal 22B-23-692	Survey Calculation Method:	Minimum Curvature
Wellbore:	Wellbore #1		
Design:	Design #1		

Planned Survey

Measured Depth (ft)	Inclination (°)	Azimuth (°)	Vertical Depth (ft)	+N/-S (ft)	+E/-W (ft)	Vertical Section (ft)	Dogleg Rate (°/100ft)	Build Rate (°/100ft)	Turn Rate (°/100ft)
5,200.00	6.52	243.60	5,172.65	-215.63	-434.38	484.95	0.00	0.00	0.00
5,300.00	6.52	243.60	5,272.00	-220.68	-444.55	496.31	0.00	0.00	0.00
5,371.61	6.52	243.60	5,343.15	-224.30	-451.84	504.45	0.00	0.00	0.00
5,400.00	6.10	243.60	5,371.37	-225.68	-454.63	507.57	1.50	-1.50	0.00
5,500.00	4.60	243.60	5,470.93	-229.83	-462.98	516.88	1.50	-1.50	0.00
5,600.00	3.10	243.60	5,570.70	-232.81	-468.98	523.59	1.50	-1.50	0.00
5,700.00	1.60	243.60	5,670.62	-234.63	-472.65	527.68	1.50	-1.50	0.00
5,800.00	0.10	243.60	5,770.60	-235.29	-473.97	529.16	1.50	-1.50	0.00
5,806.40	0.00	0.00	5,777.00	-235.29	-473.98	529.16	1.50	-1.50	0.00
5,900.00	0.00	0.00	5,870.60	-235.29	-473.98	529.16	0.00	0.00	0.00
6,000.00	0.00	0.00	5,970.60	-235.29	-473.98	529.16	0.00	0.00	0.00
6,100.00	0.00	0.00	6,070.60	-235.29	-473.98	529.16	0.00	0.00	0.00
6,200.00	0.00	0.00	6,170.60	-235.29	-473.98	529.16	0.00	0.00	0.00
6,300.00	0.00	0.00	6,270.60	-235.29	-473.98	529.16	0.00	0.00	0.00
6,400.00	0.00	0.00	6,370.60	-235.29	-473.98	529.16	0.00	0.00	0.00
6,500.00	0.00	0.00	6,470.60	-235.29	-473.98	529.16	0.00	0.00	0.00
6,600.00	0.00	0.00	6,570.60	-235.29	-473.98	529.16	0.00	0.00	0.00
6,700.00	0.00	0.00	6,670.60	-235.29	-473.98	529.16	0.00	0.00	0.00
6,800.00	0.00	0.00	6,770.60	-235.29	-473.98	529.16	0.00	0.00	0.00
6,900.00	0.00	0.00	6,870.60	-235.29	-473.98	529.16	0.00	0.00	0.00
7,000.00	0.00	0.00	6,970.60	-235.29	-473.98	529.16	0.00	0.00	0.00
7,100.00	0.00	0.00	7,070.60	-235.29	-473.98	529.16	0.00	0.00	0.00
7,200.00	0.00	0.00	7,170.60	-235.29	-473.98	529.16	0.00	0.00	0.00
7,300.00	0.00	0.00	7,270.60	-235.29	-473.98	529.16	0.00	0.00	0.00
7,400.00	0.00	0.00	7,370.60	-235.29	-473.98	529.16	0.00	0.00	0.00
7,500.00	0.00	0.00	7,470.60	-235.29	-473.98	529.16	0.00	0.00	0.00
7,600.00	0.00	0.00	7,570.60	-235.29	-473.98	529.16	0.00	0.00	0.00
7,700.00	0.00	0.00	7,670.60	-235.29	-473.98	529.16	0.00	0.00	0.00
7,800.00	0.00	0.00	7,770.60	-235.29	-473.98	529.16	0.00	0.00	0.00
7,806.40	0.00	0.00	7,777.00	-235.29	-473.98	529.16	0.00	0.00	0.00

Casing Points

Measured Depth (ft)	Vertical Depth (ft)	Name	Casing Diameter (")	Hole Diameter (")
800.00	800.00	9 5/8"	9-5/8	12-1/4

Formations

Measured Depth (ft)	Vertical Depth (ft)	Name	Lithology	Dip (°)	Dip Direction (°)
3,845.58	3,827.00	Mesaverde		0.00	
4,781.64	4,757.00	Price Coal		0.00	
5,646.35	5,617.00	Top Gas		0.00	
7,506.40	7,477.00	Rollins		0.00	
7,806.40	7,777.00	TD		0.00	

WELL DETAILS: Dixon Federal 22B-23-692

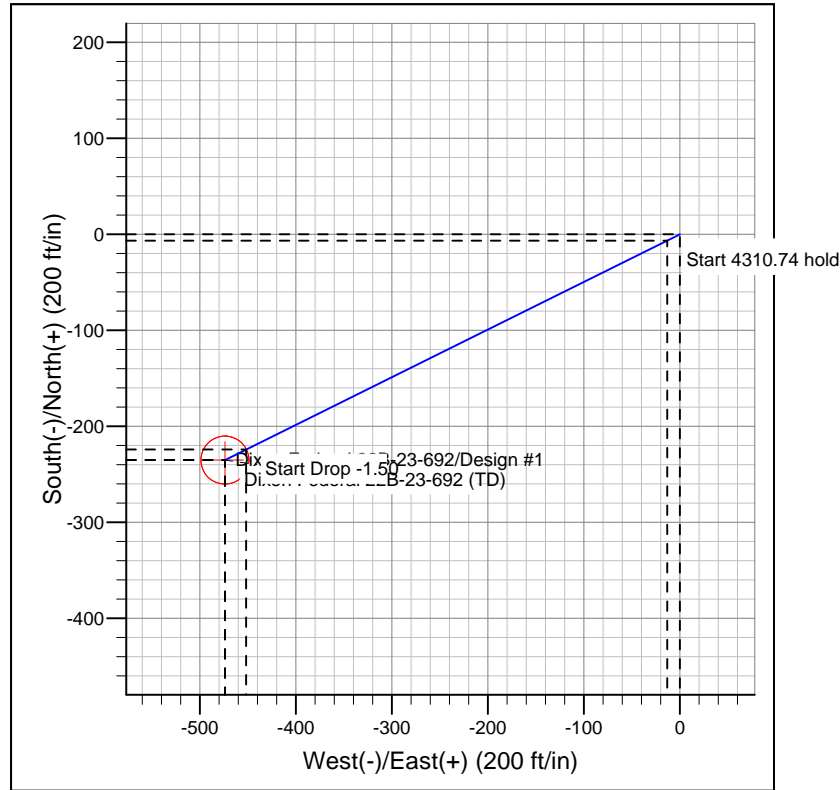
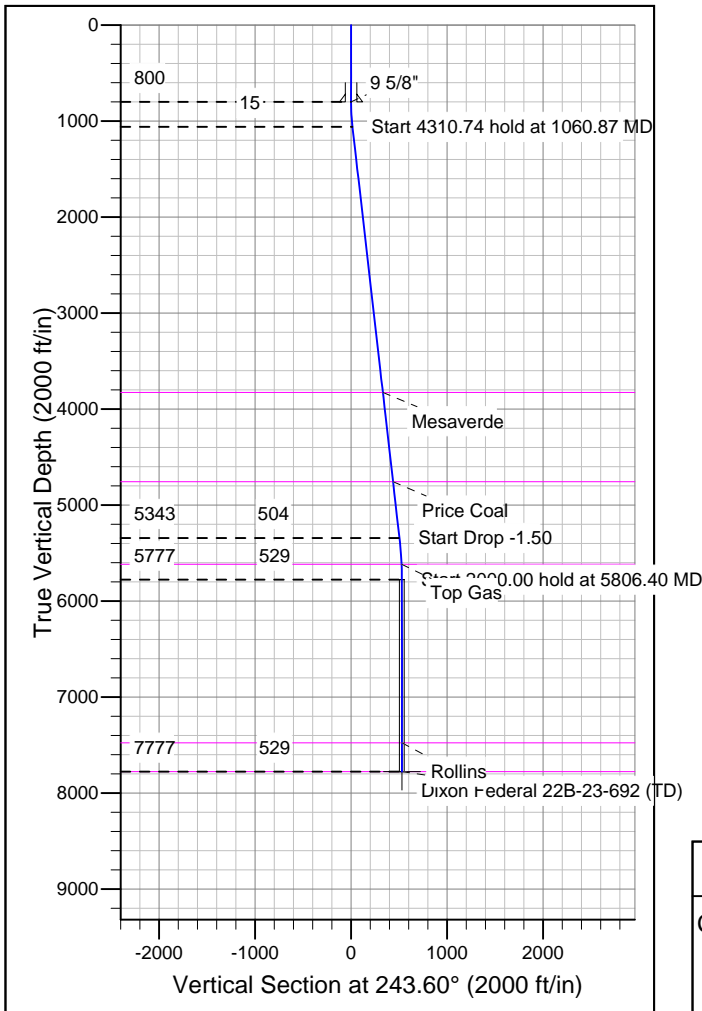
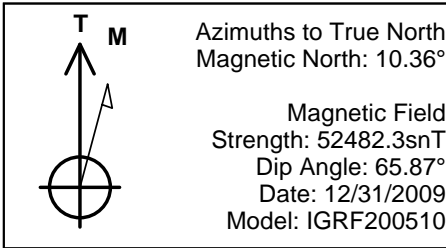
Ground Level: 0.00							Slot
+N/-S 0.00	+E/-W 0.00	Northing 1619386.510	Easting 2397731.032	Latitude 39° 30' 52.437 N	Longitude 107° 38' 5.8128 W		

SECTION DETAILS

Sec	MD	Inc	Azi	TVD	+N/-S	+E/-W	DLeg	TFace	VSec	Target
1	0.00	0.00	0.00	0.00	0.00	0.00	0.00	0.00	0.00	
2	800.00	0.00	0.00	800.00	0.00	0.00	0.00	0.00	0.00	
3	1060.87	6.52	243.60	1060.31	-6.59	-13.28	2.50	243.60	14.83	
4	5371.61	6.52	243.60	5343.15	-224.30	-451.84	0.00	0.00	504.45	
5	5806.40	0.00	0.00	5777.00	-235.29	-473.98	1.50	180.00	529.16	
6	7806.40	0.00	0.00	7777.00	-235.29	-473.98	0.00	0.00	529.16	Dixon Federal 22B-23-692 (TD)

WELLBORE TARGET DETAILS

Name	TVD	+N/-S	+E/-W	Shape
Dixon Federal 22B-23-692 (TD)	7777.00	-235.29	-473.98	Circle (Radius: 25.00)



FORMATION TOP DETAILS

TVDPath	MDPath	Formation
3827.00	3845.58	Mesaverde
4757.00	4781.64	Price Coal
5617.00	5646.35	Top Gas
7477.00	7506.40	Rollins
7777.00	7806.40	TD

REFERENCE INFORMATION

Co-ordinate (N/E) Reference: Well Dixon Federal 22B-23-692, True North
 Vertical (TVD) Reference: WELL @ 5964.00ft (Original Well Elev)
 Section (VS) Reference: Slot - (0.00N, 0.00E)
 Measured Depth Reference: WELL @ 5964.00ft (Original Well Elev)
 Calculation Method: Minimum Curvature