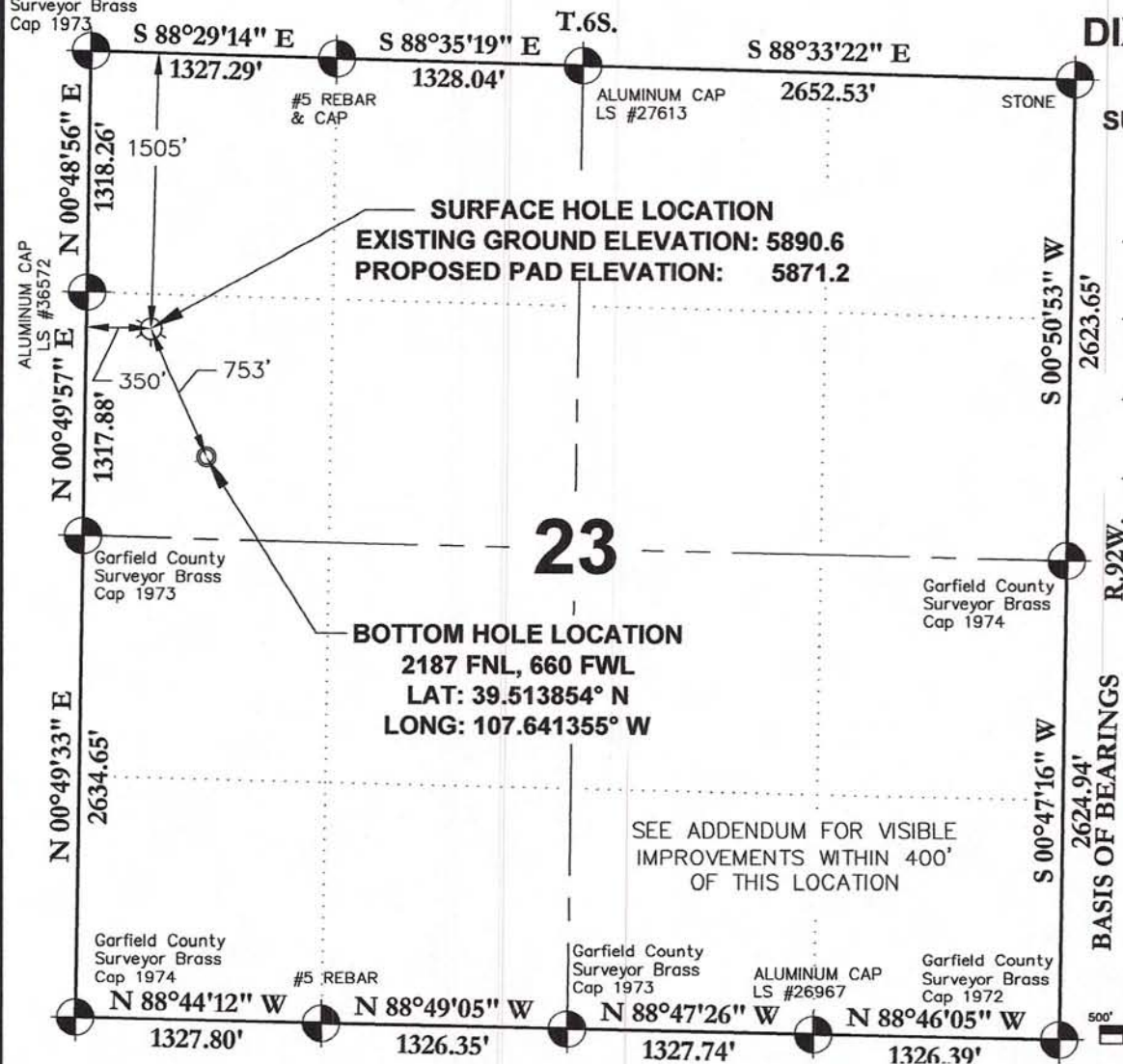


Garfield County
Surveyor Brass
Cap 1973



DIXON FEDERAL

12B-23-692

SURFACE LOCATION

1505 FNL

350 FWL

LATITUDE

39.515729° N

LONGITUDE

107.642476° W

NORTHING

1619860.1

EASTING

2395617.9

23

BOTTOM HOLE LOCATION

2187 FNL, 660 FWL

LAT: 39.513854° N

LONG: 107.641355° W

SEE ADDENDUM FOR VISIBLE
IMPROVEMENTS WITHIN 400'
OF THIS LOCATION

BASIS OF BEARINGS

500' 0 1000'

GRAPHIC SCALE IN FEET
1 INCH = 1000 FEET

SURVEYORS STATEMENT:

I, JAMES A. KALMON, A REGISTERED LAND SURVEYOR IN THE STATE OF COLORADO DO HEREBY CERTIFY THAT THE SURVEY SHOWN HEREON WAS PREPARED BY ME OR UNDER MY DIRECT SUPERVISION AND THAT THIS PLAT IS A TRUE REPRESENTATION THEREOF. I ALSO CERTIFY THAT THE LOCATION HAS BEEN STAKED ON THE GROUND AS SHOWN ON THIS PLAT.

James A. Kalmon
38050
7-15-11

JAMES A. KALMON, COLORADO REGISTRATION NO. 38050

FOR AND ON BEHALF OF ECLIPSE SURVEYING, INC.

LEGEND:

FIELD LOCATED SECTION
MONUMENTS AS DESCRIBED

SURFACE HOLE LOCATION

BOTTOM HOLE LOCATION

CALCULATED SECTION
CORNER LOCATION

NOTES:

- 1) ELEVATIONS BASED ON N.A.V.D. 1988
- 2) LATITUDES AND LONGITUDES ARE BASE ON NAD 83, COLORADO CENTRAL ZONE.
- 3) WELL MEASURED 90° FROM SECTION LINES.
- 4) THE BASIS OF BEARING IS FROM GPS OBSERVATION RESULTING IN THE BEARING BETWEEN THE FOUND MONUMENTS AS SHOWN.
- 5) ELEVATION MASK SET TO 15°
- 6) PDOP SET TO 6



ECLIPSE
surveying

111 E. THIRD ST., SUITE 208, RIFLE, CO 81650
(970) 625-3048

REV. DATE: 7/15/11
SURVEY DATE: 8/13/10
RELEASE DATE: 9/14/10
SCALE: 1" = 1000'
SHEET: 1 of 2
PROJECT #: DIXON SWNW

Bill Barrett Corporation

SW $\frac{1}{4}$ NW $\frac{1}{4}$, SECTION 23
T. 6 S., R. 92 W. of the 6th. P.M.
GARFIELD COUNTY, COLORADO

DIXON FEDERAL 12B-23-692
ADDENDUM TO LOCATION PLAT