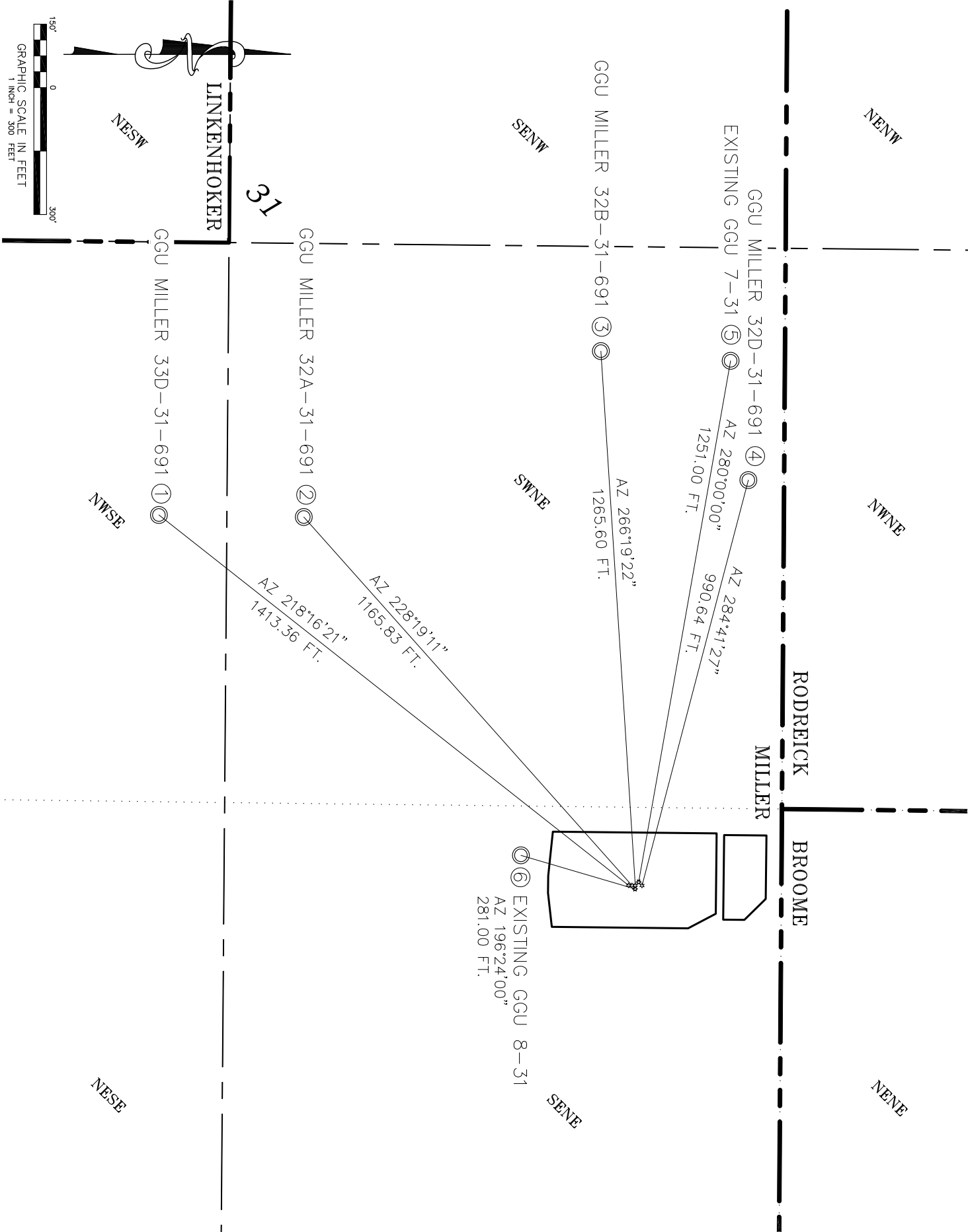


WELL INTERFERENCE EXHIBIT

MILLER PAD 4


NAD 83 COLORADO CENTRAL ZONE
SURFACE HOLE LOCATIONS



PAD DETAIL - 1"=100'

SURFACE HOLE LOCATIONS								BOTTOM HOLE LOCATIONS							
	WELL NAME	FNL	FEL	NORTHING	EASTING	LATITUDE	LONGITUDE			FSL	FEL	NORTHING	EASTING	LATITUDE	LONGITUDE
1	GGU MILLER 33D-31-691	1678	1138	1608988.3	2409873.5	39.486801	-107.591072	2475 FSL	1998	1607878.7	2408998.1	39.483701	-107.594082		
2	GGU MILLER 32A-31-691	1670	1138	1608996.3	2409873.6	39.486823	-107.591072	2450 FNL	1998	1608221.1	2409002.9	39.484640	-107.594093		
3	GGU MILLER 32B-31-691	1662	1138	1609004.3	2409873.7	39.486845	-107.591073	1750 FNL	2400	1608923.2	2408610.7	39.486543	-107.595540		
4	GGU MILLER 32D-31-691	1646	1138	1609020.3	2409873.9	39.486889	-107.591073	1400 FNL	2100	1609271.6	2408915.6	39.487518	-107.594488		
5	EXISTING GGU 7-31	1654	1147	1609012.4	2409865.6	39.486867	-107.591102	1443 FNL	2381	1609229.6	2408633.6	39.487385	-107.595484		
6	EXISTING GGU 8-31	1663	1130	1609003.7	2409881.9	39.486844	-107.591043	1933 FNL	1206	1608734.1	2409802.6	39.486099	-107.591303		

*NOTE: THE FINISHED PAD ELEVATION IS 5957.8'



ECLIPSE

surveying

111 E. THIRD ST., SUITE 208 RIFLE, CO 81650

(970) 625-3048

REV. DATE: 7/27/11
SCALE: 1" = 300'
DATE: 7/14/10
SHEET: 1 OF 1
PROJECT: MILLER 4
DFT: TAB

Bill Barrett Corporation

SE1/4NE1/4, SECTION 31
T. 6 S., R. 91 W. of the 6th. P.M.
GARFIELD COUNTY, COLORADO