



Company: GENESIS GAS & OIL, LLC

Well: FLETCHER GULCH 4-44

Field: WILDCAT

County: RIO BLANCO State: COLORADO

CEMENT BOND LOG
COLLARS

GAMMA RAY/PRESSURE/TEMPERATURE

County: RIO BLANCO
Field: WILDCAT
Location: 1331' F&L & 152' FEL
Well: FLETCHER GULCH 4-44
Company: GENESIS GAS & OIL, LLC

LOCATION		GROUND LEVEL	
1331' F&L & 152' FEL		Elev.: K.B. 6619.6 ft G.L. 6500.6 ft D.F. 6518.6 ft	
Permanent Datum:	GROUND LEVEL	Elev.: 6508.6 ft	
Log Measured From:	KELLY BUSHING	11.0 ft above Perm. Datum	
Drilling Measured From:	KELLY BUSHING		
API Serial No.	Section	Township	Range
0510310690 00	4	1N	100W

Logging Date	20-AUG-2006		
Run Number	1		
Depth Driller	2569 ft		
Schlumberger Depth	2540 ft		
Bottom Log Interval	2531.4 ft		
Top Log Interval	0 ft		
Casing Fluid Type	WATER		
Salinity			
Density	8.34 lbm/gal		
Fluid Level	0 ft		
BIT/CASING/TUBING STRING			
Bit Size	7.875 in		
From	0 ft		
To	2569 ft		
Casing/Tubing Size	6.500 in		
Weight	17 lbm/ft		
Grade			
From	0 ft		
To	2540 ft		
Maximum Recorded Temperatures	89 degF		
Logger On Bottom	28 AUG 2006	9:04	
Unit Number	406	VERNAL	
Recorded By	SCOTTRACH		
Witnessed By	ED MARTIN		

PVT DATA

Oil Density	Run 1	Run 2
Water Salinity		
Gas Gravity		
B _g		
B _w		
1-B _g		
Bubble Point Pressure		
Bubble Point Temperature		
Solution GOR		
Maximum Deviation		

CEMENTING DATA

Primary/Squeeze	Primary
Casing String No	
Lead Cement Type	
Volume	
Density	
Water Loss	
Additives	
Tail Cement Type	
Volume	
Density	
Water Loss	
Additives	

Expected Cement Top

Logging Date	
Run Number	
Depth Driller	
Schlumberger Depth	
Bottom Log Interval	
Top Log Interval	
Casing Fluid Type	
Salinity	
Density	
Fluid Level	
BIT/CASING/TUBING STRING	
Bit Size	
From	
To	
Casing/Tubing Size	
Weight	
Grade	
From	
To	
Maximum Recorded Temperatures	
Logger On Bottom	
Unit Number	
Recorded By	
Witnessed By	

[illegible]

DEPTH SUMMARY LISTING

Date Created: 28-AUG-2008 10:12:19

Depth System Equipment

Depth Measuring Device		Tension Device		Logging Cable	
Type:	IDW-B	Type:	CMTD-C	Type:	1-23P
Serial Number:	6408	Serial Number:	5022	Serial Number:	16062
Calibration Date:	6-4-08	Calibration Date:	13-AUG-08	Length:	18300.00 FT
Calibrator Serial Number:	1	Calibrator Serial Number:	1	Conveyance Method:	Wireline
Calibration Cable Type:	1-23P	Calibration Gain:	0.90	Rig Type:	LAND
Wheel Correction 1:	-4	Calibration Offset:	-120.00		
Wheel Correction 2:	-4				

Depth Control Parameters

Log Sequence:	Subsequent Trip To the Well
Reference Log Name:	PLATFORM EXPRESS
Reference Log Run Number:	1
Reference Log Date:	3-JUL-08
Subsequent Trip Down Log Correction:	5.00 FT

Depth Control Remarks

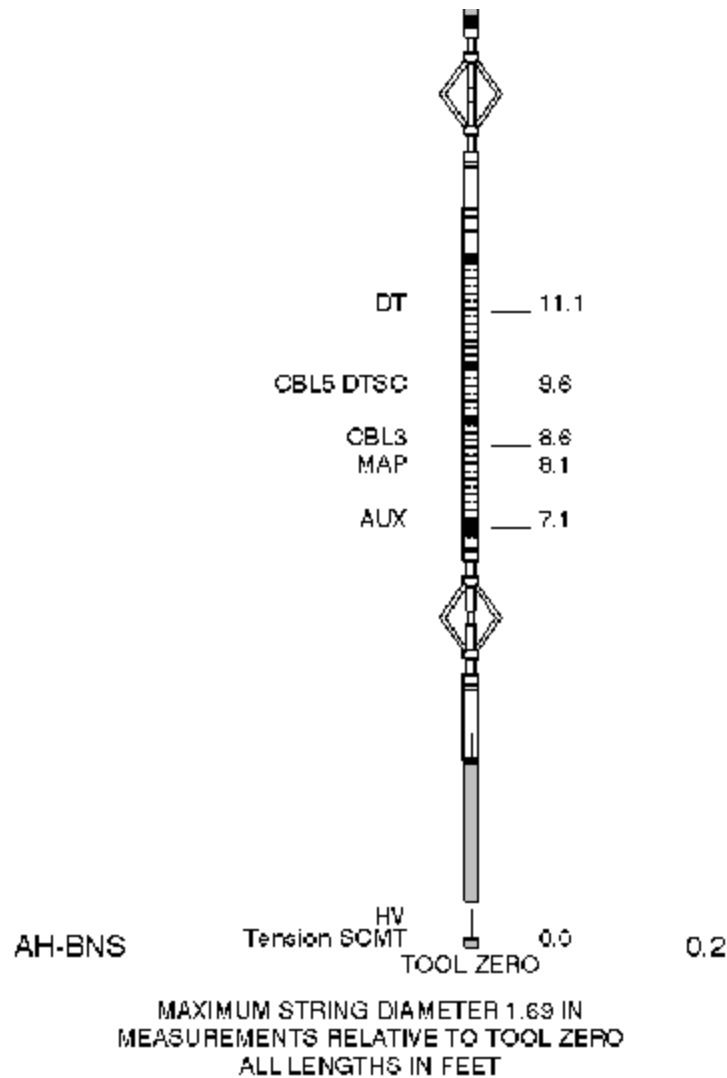
1. IDW USED AS PRIMARY DEPTH CONTROL
2. Z-CHART USED AS SECONDARY
- 3.
- 4.
- 5.
- 6.

DISCLAIMER

THE USE OF AND RELIANCE UPON THIS RECORDED-DATA BY THE HEREIN NAMED COMPANY (AND ANY OF ITS AFFILIATES, PARTNERS, REPRESENTATIVES, AGENTS, CONSULTANTS AND EMPLOYEES) IS SUBJECT TO THE TERMS AND CONDITIONS AGREED UPON BETWEEN SCHLUMBERGER AND THE COMPANY, INCLUDING: (a) RESTRICTIONS ON USE OF THE RECORDED DATA; (b) DISCLAIMERS AND WAIVERS OF WARRANTIES AND REPRESENTATIONS REGARDING COMPANY'S USE OF AND RELIANCE UPON THE RECORDED-DATA; AND (c) CUSTOMER'S FULL AND SOLE RESPONSIBILITY FOR ANY INFERENCE DRAWN OR DECISION MADE IN CONNECTION WITH THE USE OF THIS RECORDED-DATA.

OTHER SERVICES1	OTHER SERVICES2
OS1: PERFORATION	OS1:
OS2:	OS2:
OS3:	OS3:
OS4:	OS4:
OS5:	OS5:
REMARKS: RUN NUMBER 1	REMARKS: RUN NUMBER 2
LOG CORRELATED TO SCHLUMBERGER PEX DATED 3-JUL 08	

MAX TEMPERATURE-89 DEGF	
MAX PRESSURE 1093 PSI	
TOTAL DEPTH- 2540 FT	
EST. TOP OF CEMENT-SURFACE	
NO SHORT JOINTS FOUND	
CREW: M. WOOD, W. DUNCAN, A. DUNCAN, T. PAYNE	
THANK YOU FOR CHOOSING SCHLUMBERGER	
<div>RUN 1</div> <div>SERVICE ORDER #: PROGRAM VERSION: FLUID LEVEL:</div> <div>ARZA 00029 1500-309 0 ft</div>	<div>RUN 2</div> <div>SERVICE ORDER #: PROGRAM VERSION: FLUID LEVEL:</div>
LOGGED INTERVAL START STOP	LOGGED INTERVAL START STOP
EQUIPMENT DESCRIPTION	
RUN 1	RUN 2
<div>SURFACE EQUIPMENT</div> <div>WITM-A PSC 16MHZ</div>	
<div>DOWNHOLE EQUIPMENT</div> <div> <div> <div>MH-22 MH-22</div> <div>30.3</div> </div> <div> <div> <div>AH-38</div> <div>Detail MT TelStatus CTEM</div> <div>28.8</div> </div> <div> <div> <div>PSPT-A/B</div> <div>PSC-A</div> <div>PSPT-B 928</div> <div>PSTC</div> <div>PBMS-B</div> <div>CQG F Mano</div> <div>RTD Thermometer</div> <div>GR</div> <div>CCL</div> <div>PBMS</div> </div> <div> <div>28.5</div> <div>28.5</div> </div> </div> <div> <div> <div>24.8</div> <div>21.7</div> <div>21.4</div> <div>21.0</div> <div>20.2</div> </div> <div> <div>Well Temp</div> <div>CQG Manom</div> <div>CCL</div> <div>PBMS PSTC</div> </div> </div> <div> <div>20.2</div> <div>SCMT-CA</div> <div>SCMC-CA 8109</div> <div>SECH-CA</div> <div>SCME-K</div> <div>SCMS-CA 8141</div> <div>SCMX-CA</div> </div> </div> </div>	



Schlumberger

MAIN PASS

MAXIS Field Log

Company: GENESIS GAS & OIL, LLC

Well: FLETCHER GULCH 4-44

Output DLIS Files

DEFAULT	SCMT_PSP_005LUP	FN:4	PRODUCER	28-Aug-2008 09:54	2551.0 FT	14.5 FT
---------	-----------------	------	----------	-------------------	-----------	---------

OP System Version: 15C0-309

MCM

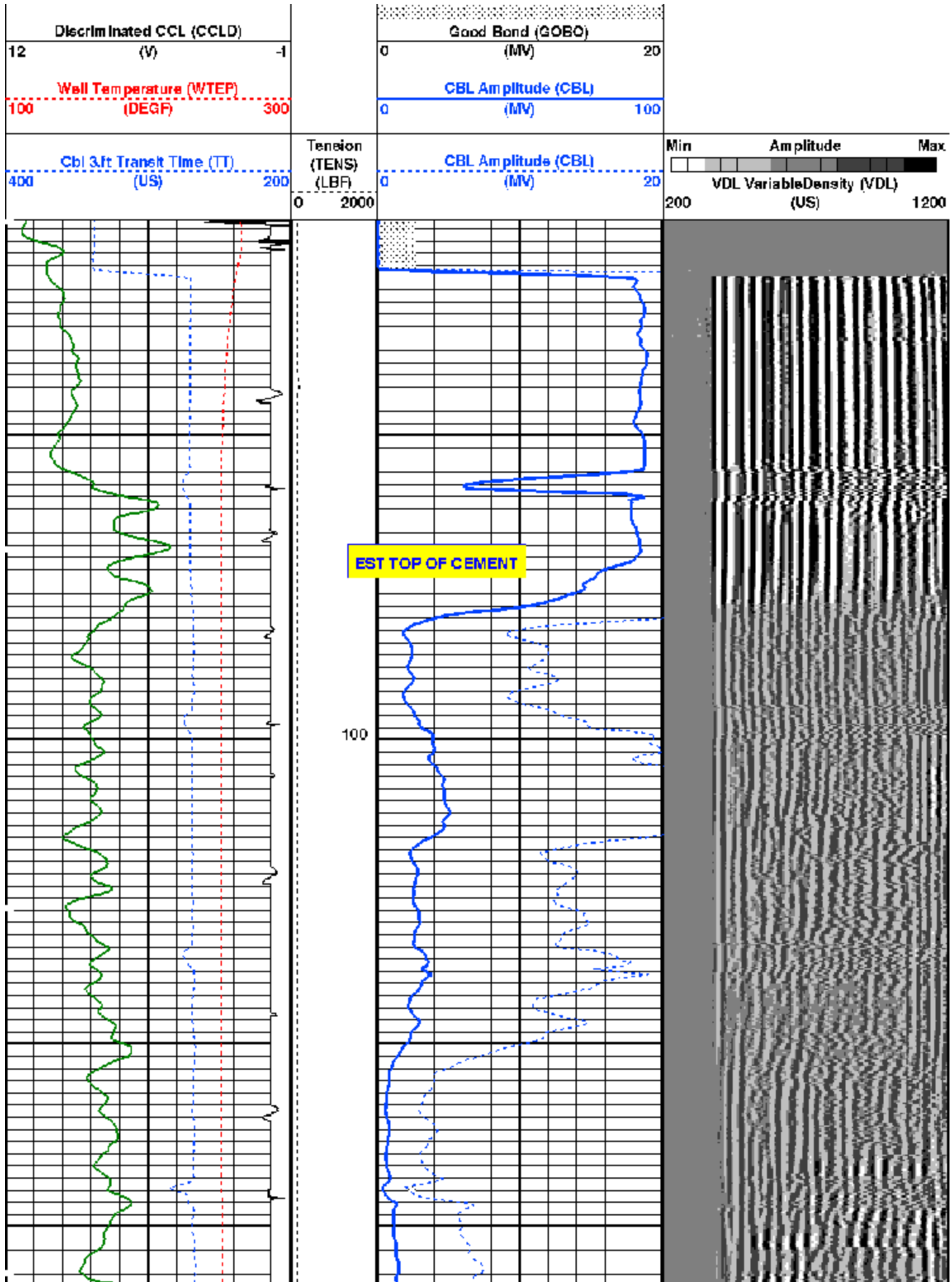
SCMT-CA	SRPC-3582-Q1_2008_OP15	PSPT-A/B	SRPC-3582-Q1_2008_OP15
---------	------------------------	----------	------------------------

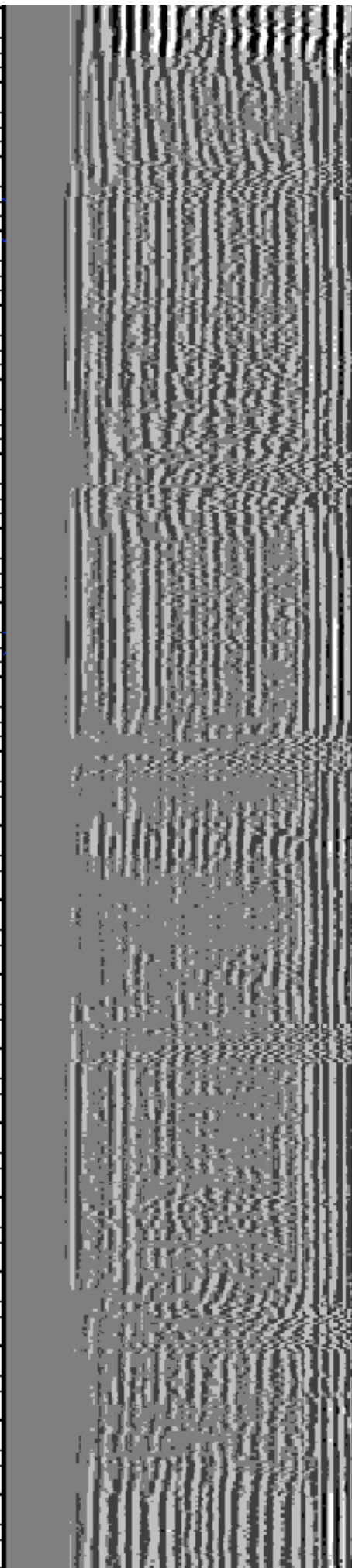
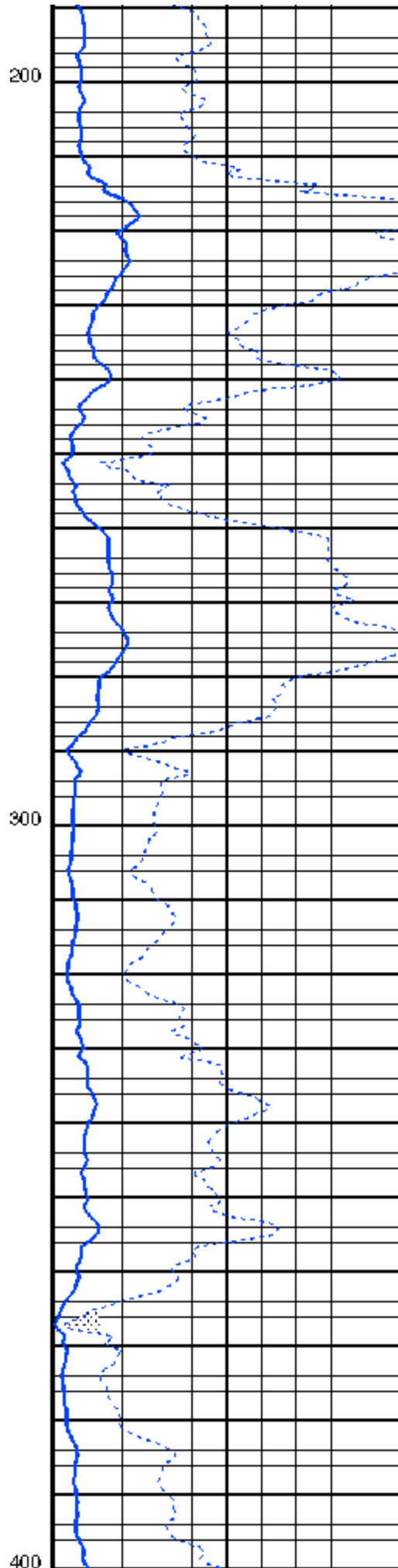
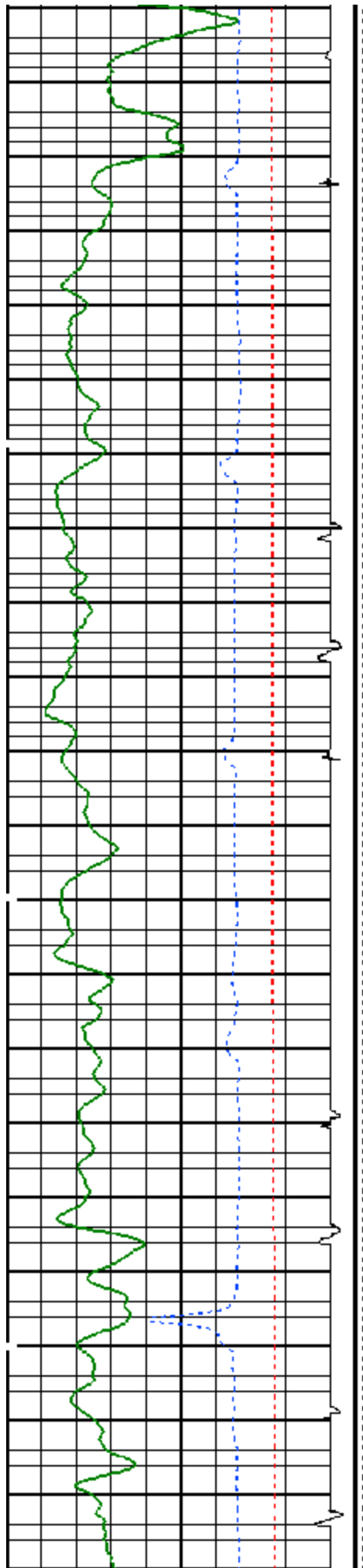
PIP SUMMARY

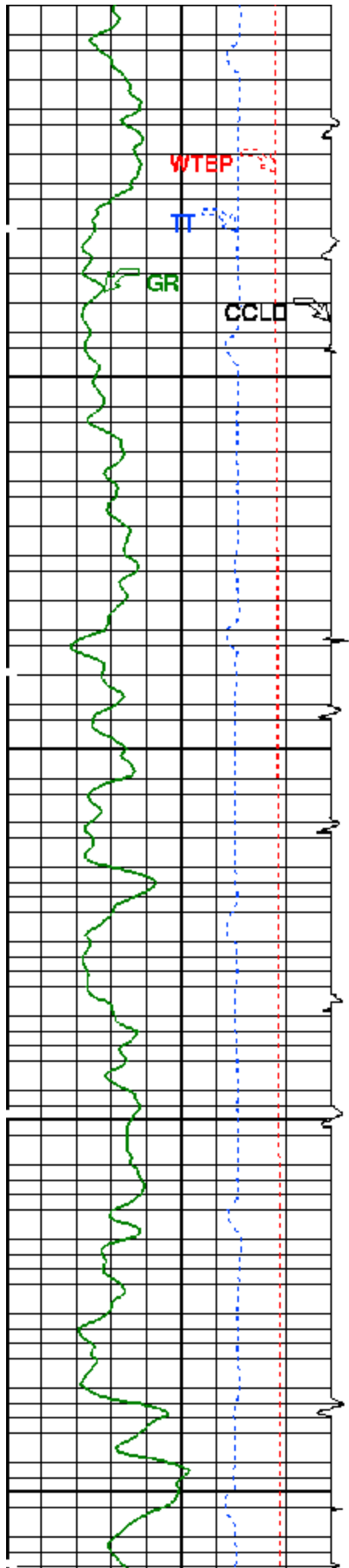
Time Mark Every 60 S

Gamma Ray (GR)
(GAPI) 0 150

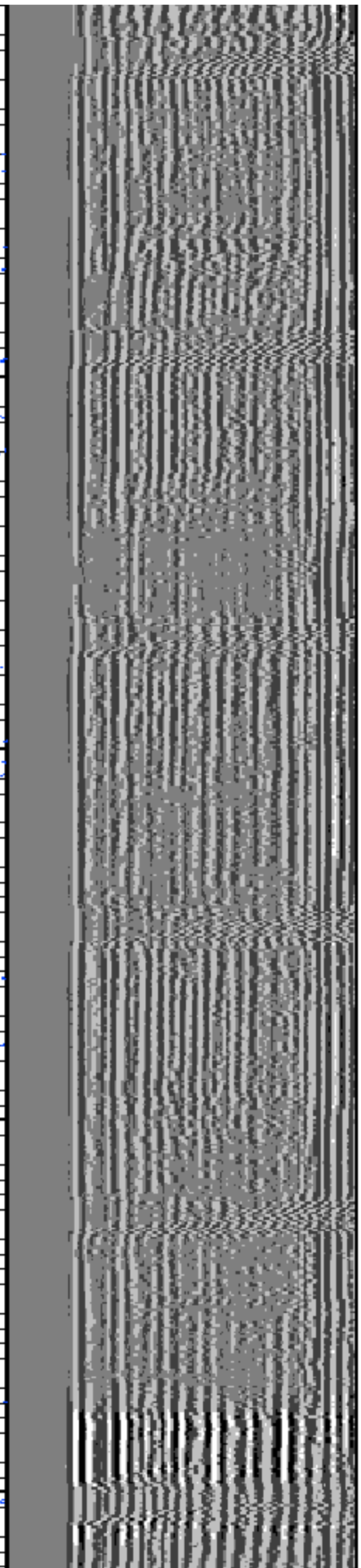
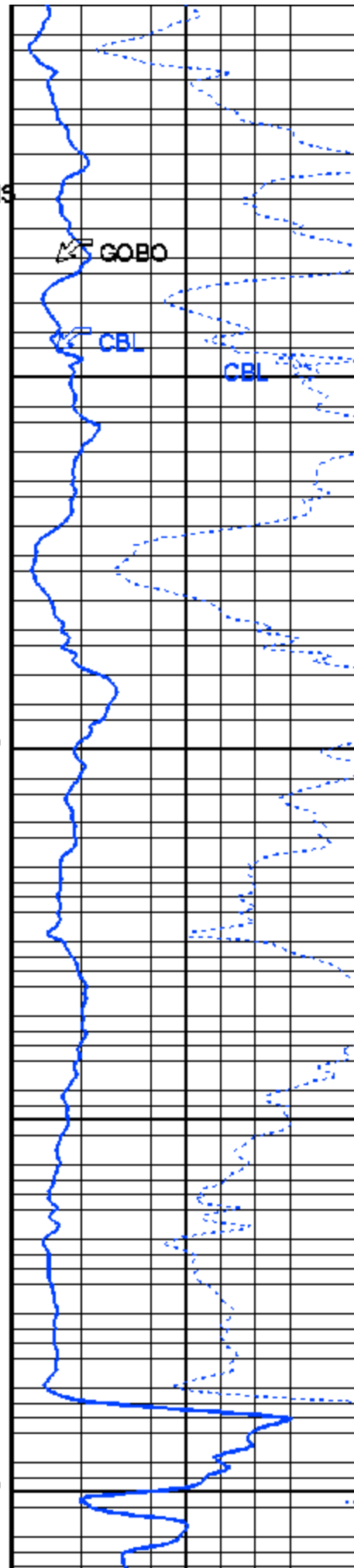
> 80% BOND
From ACBL to GOBO

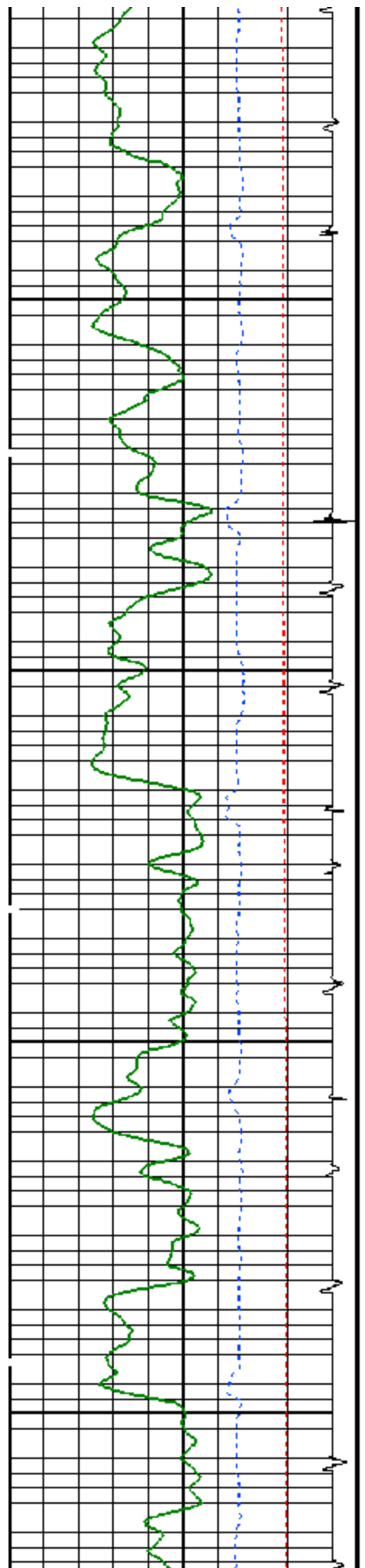






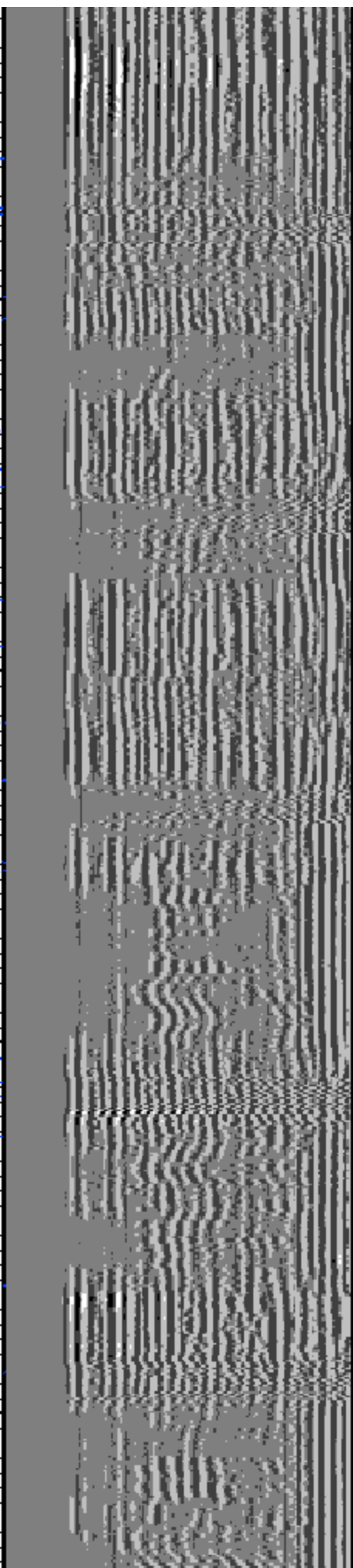
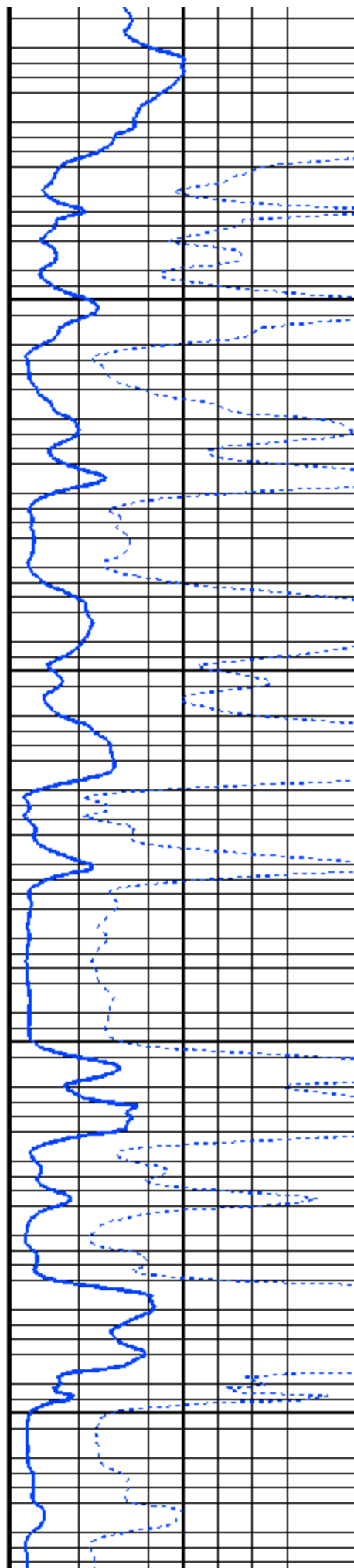
TENS

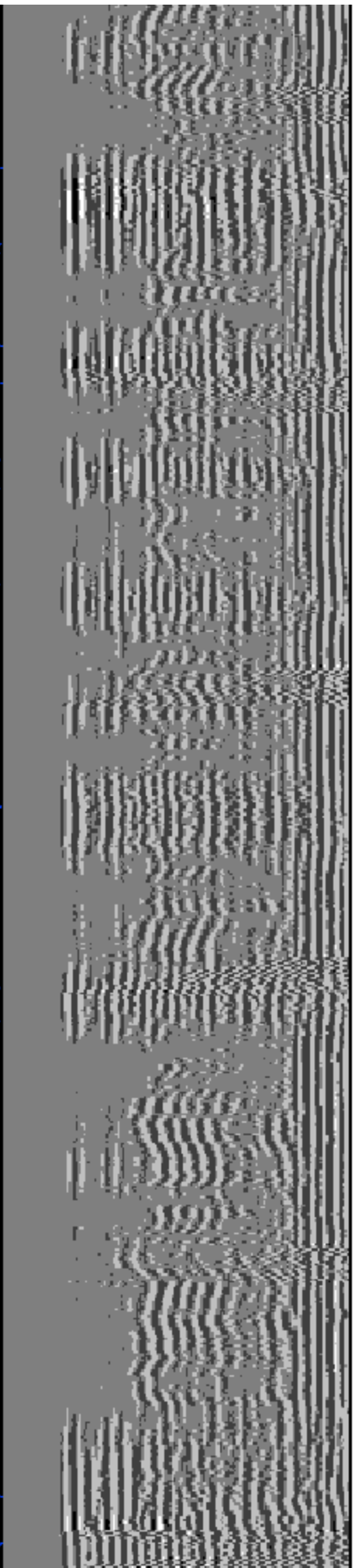
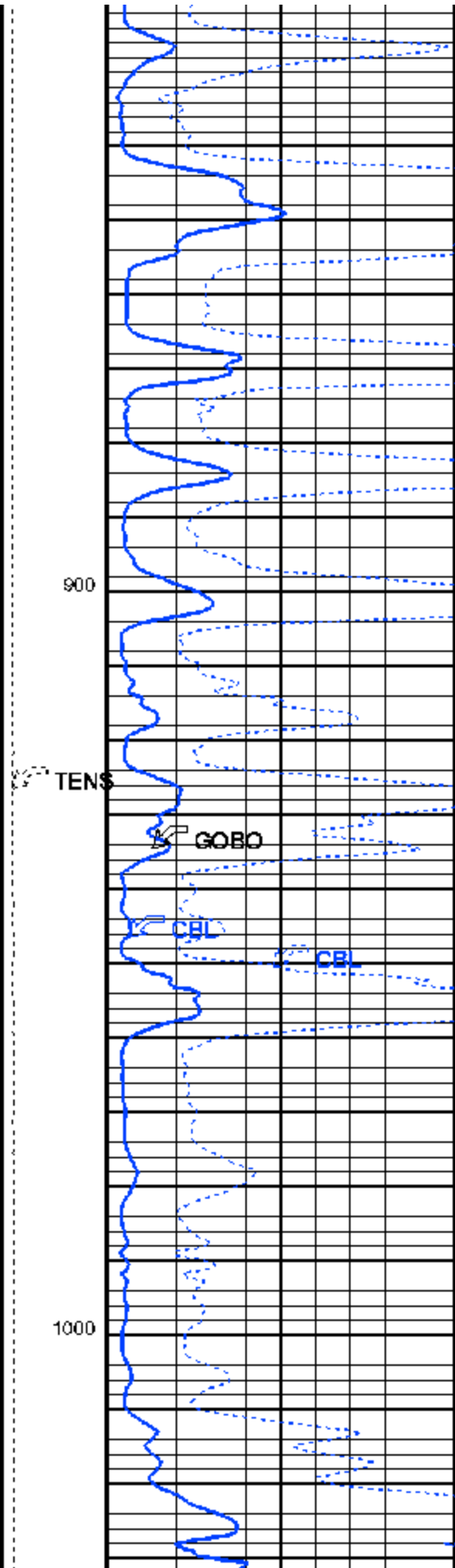
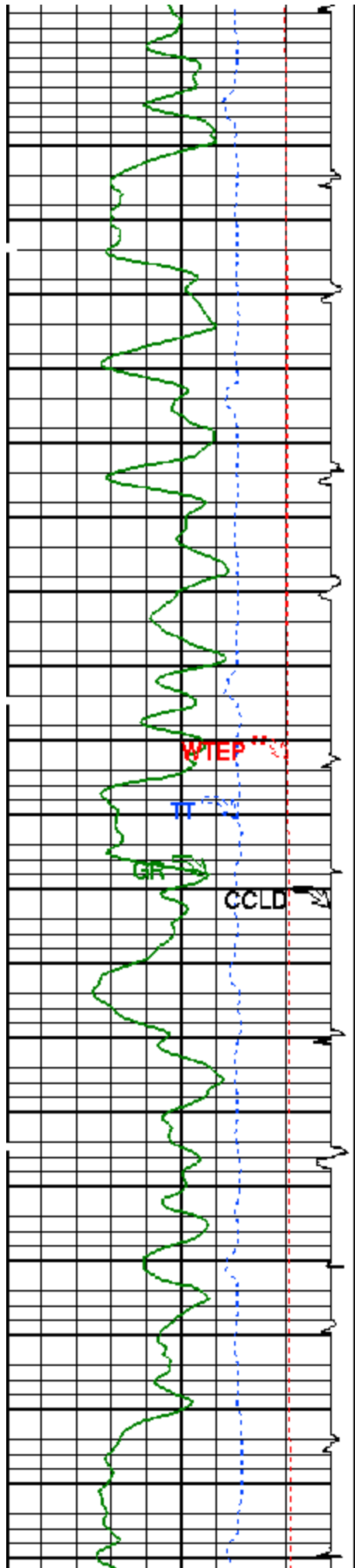


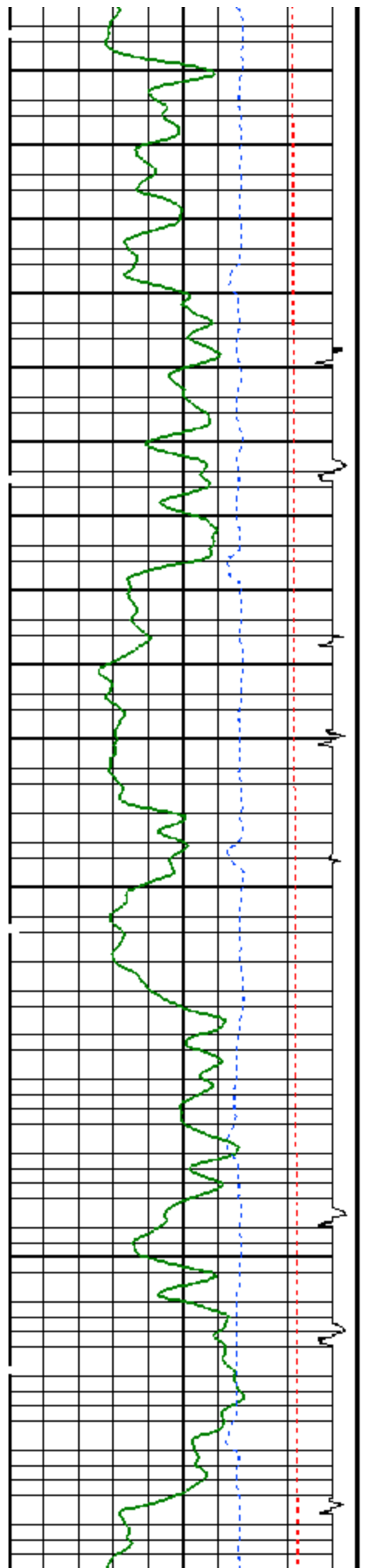


700

800

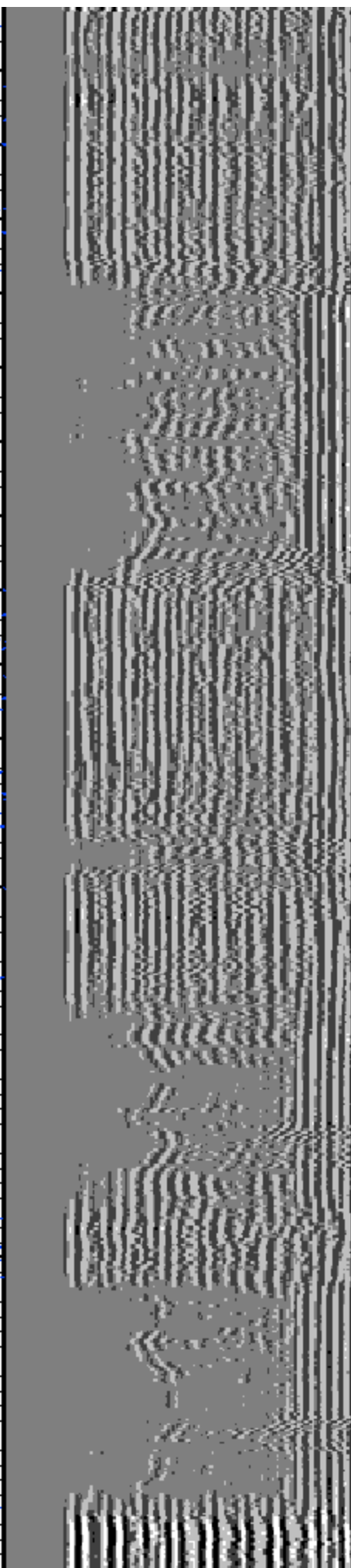
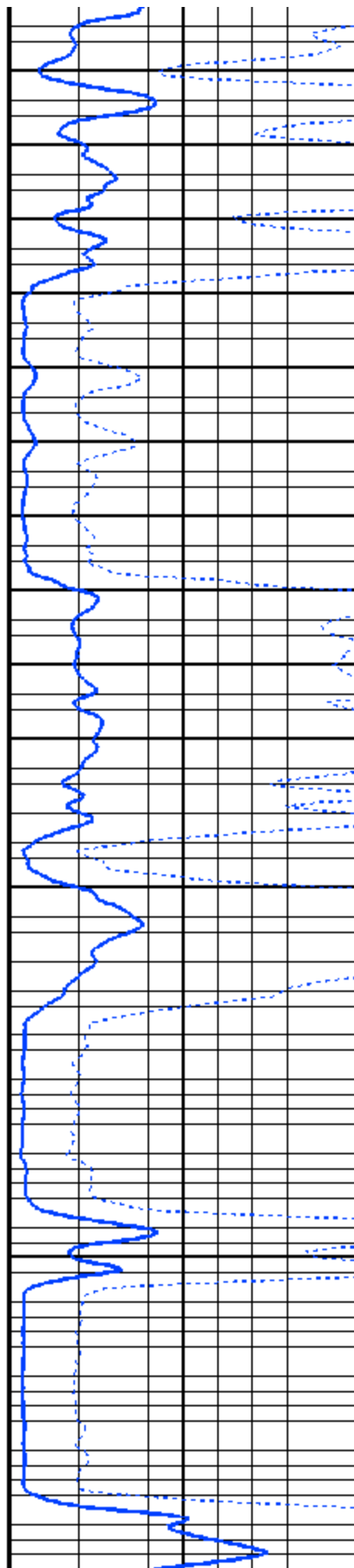


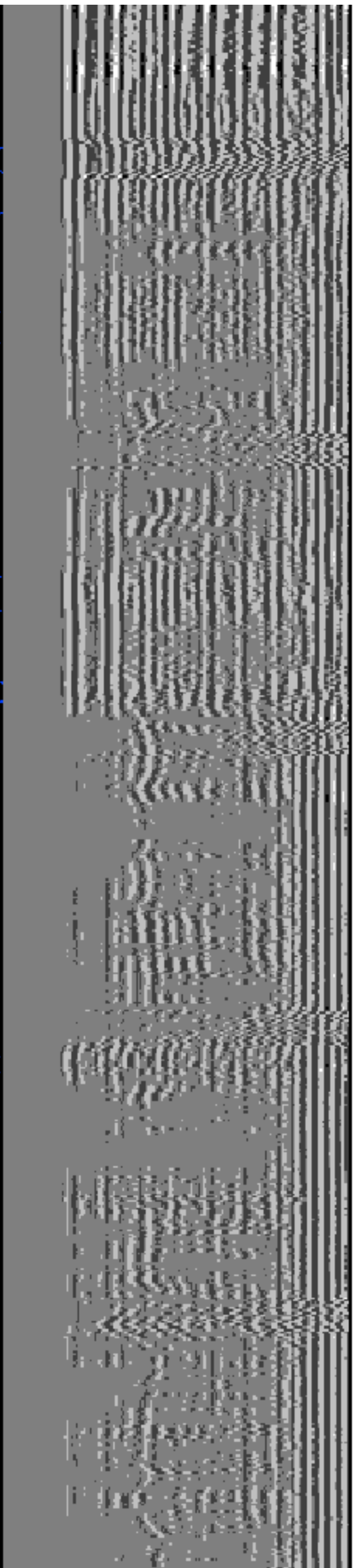
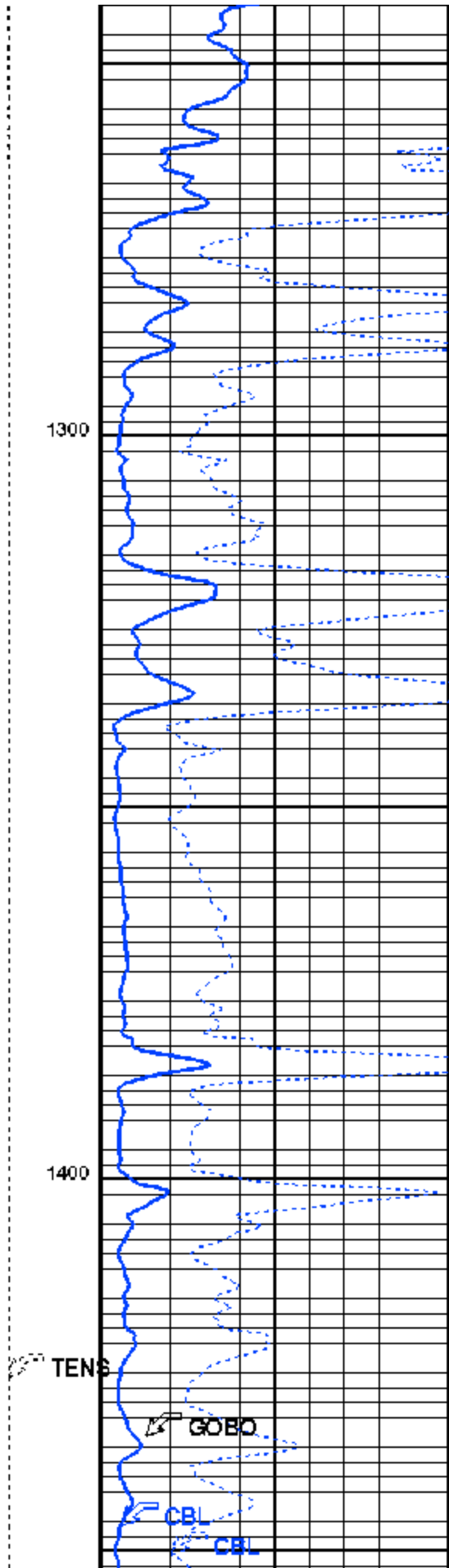
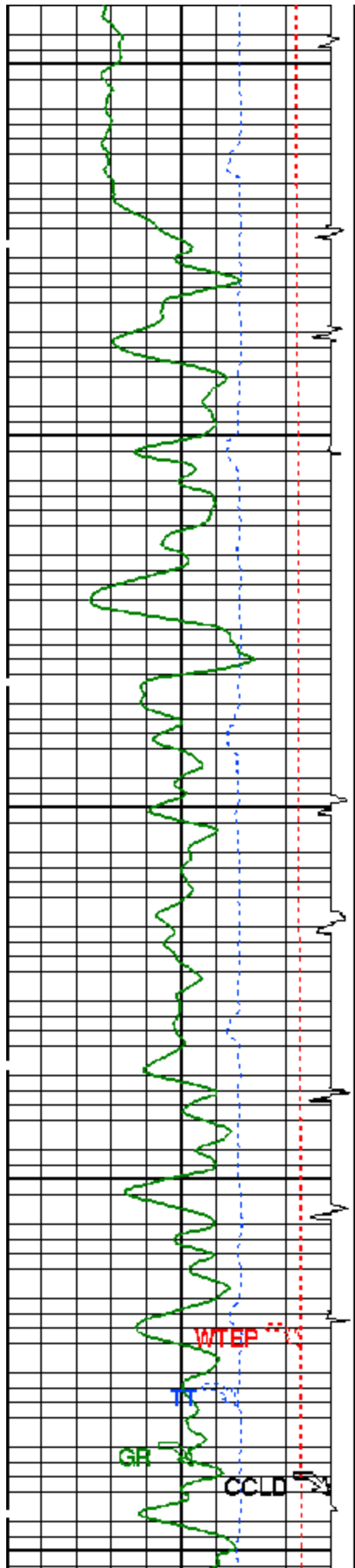


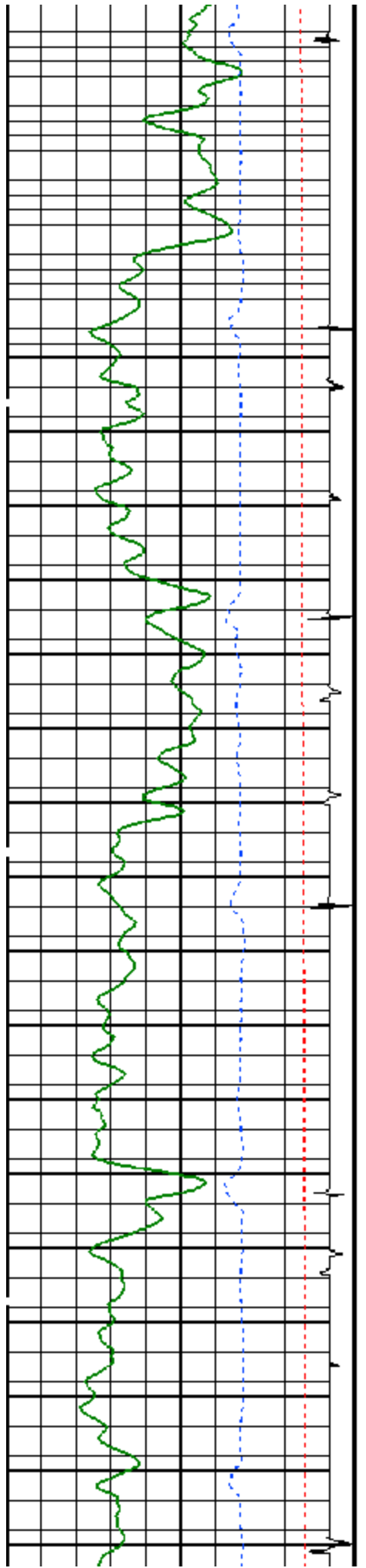


1100

1200

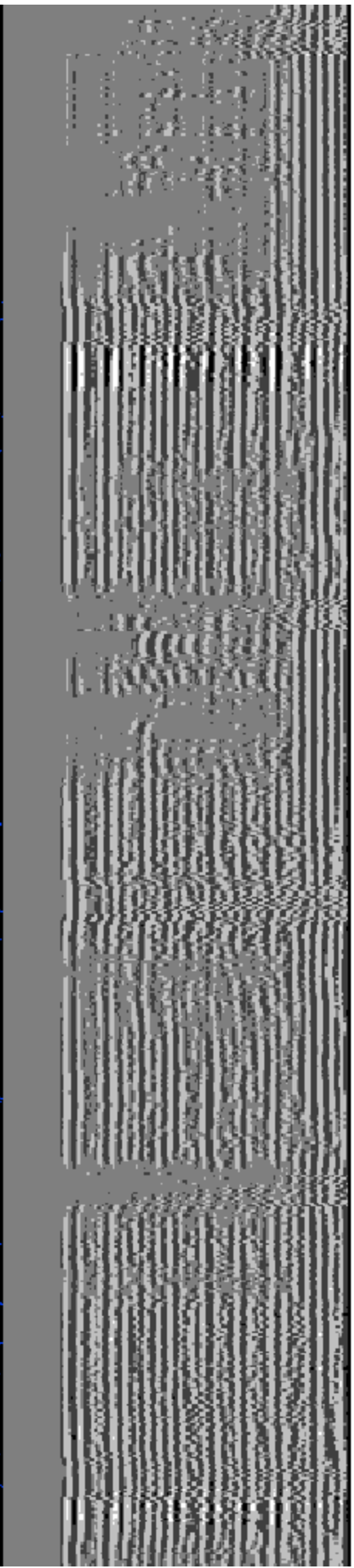
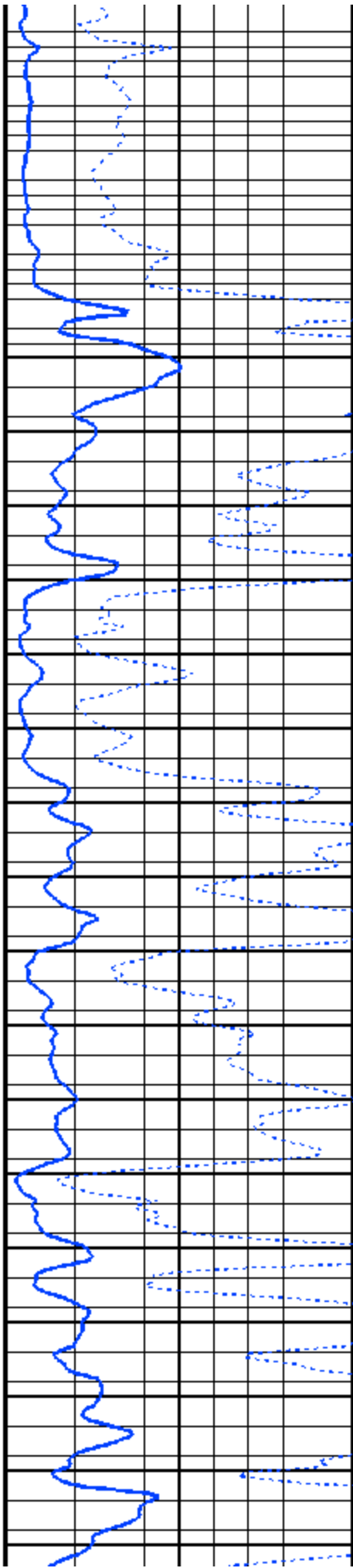


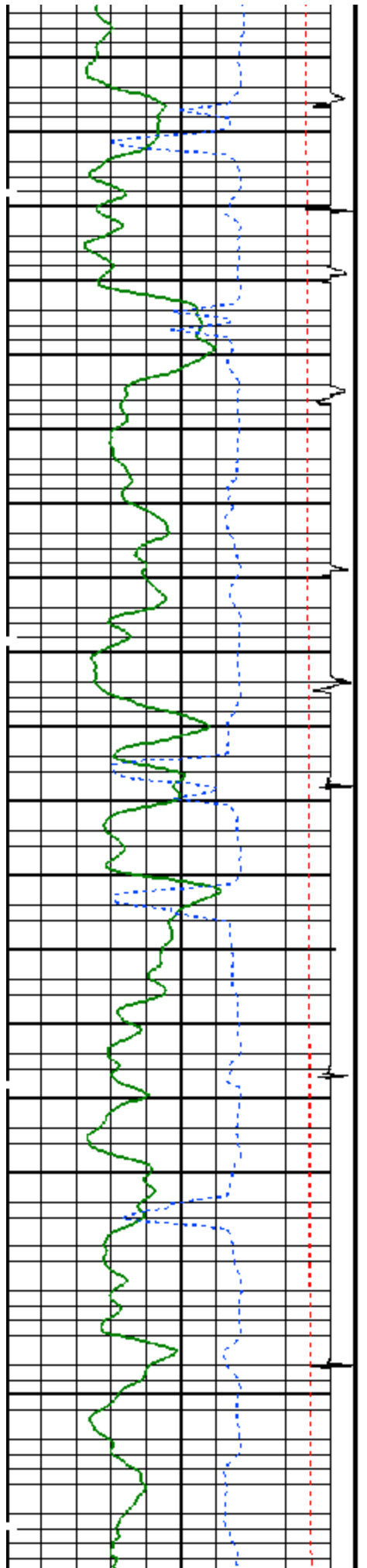




1500

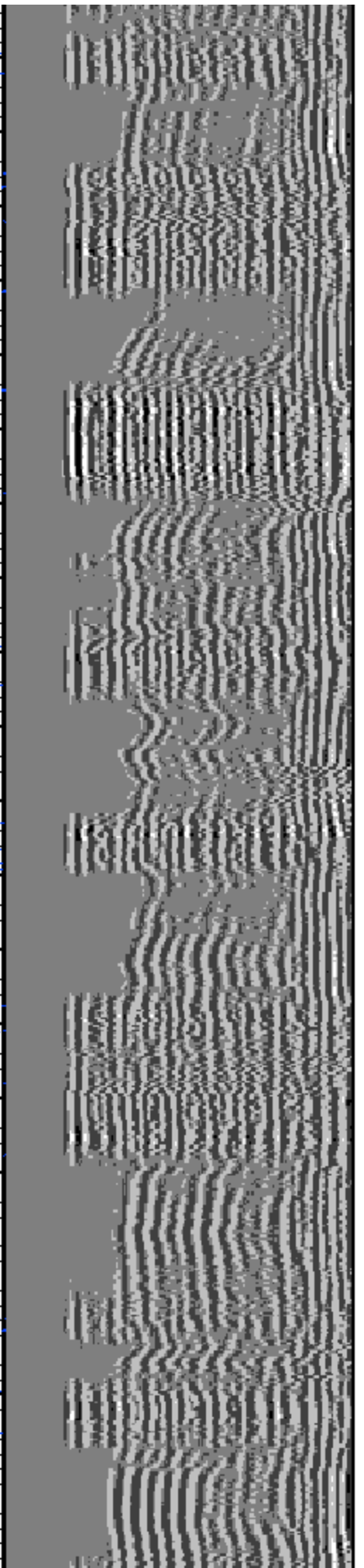
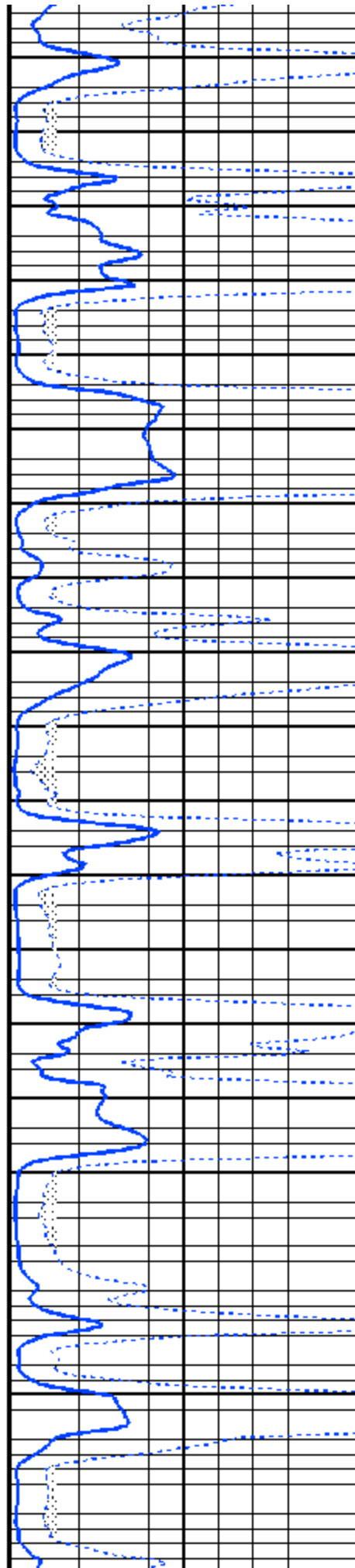
1600

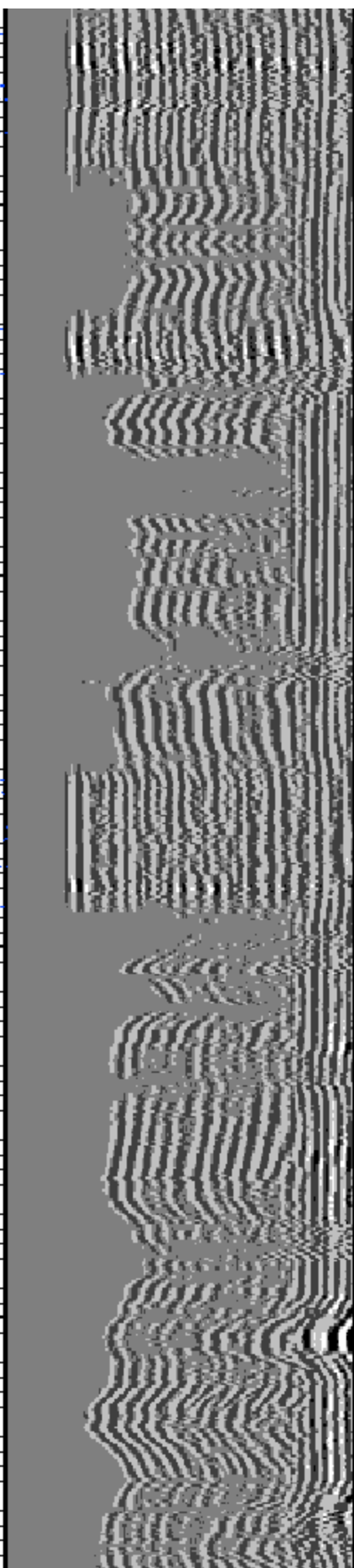
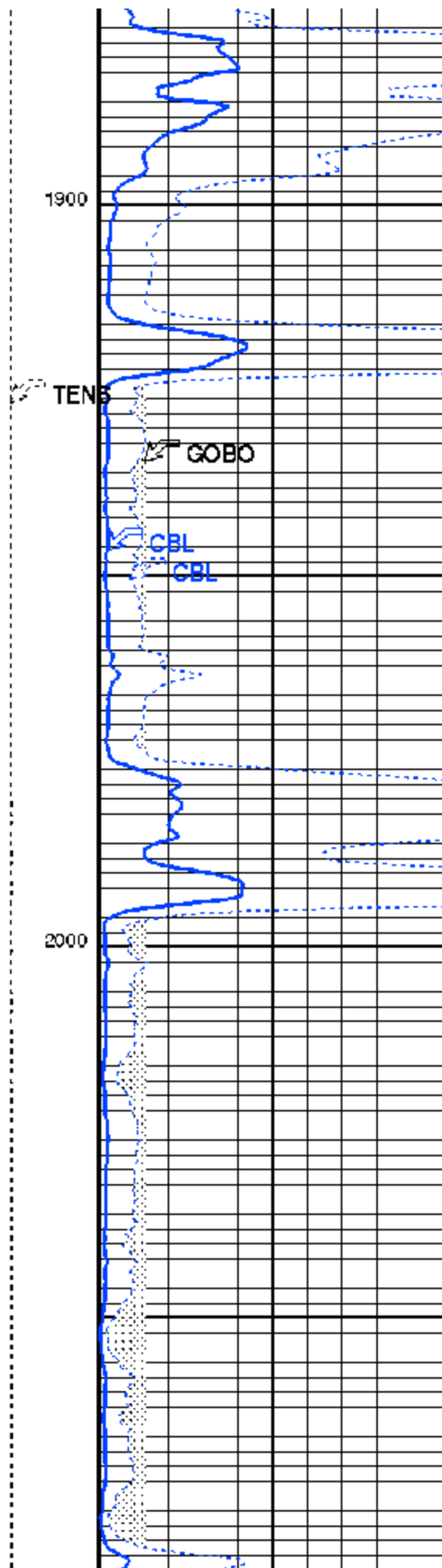
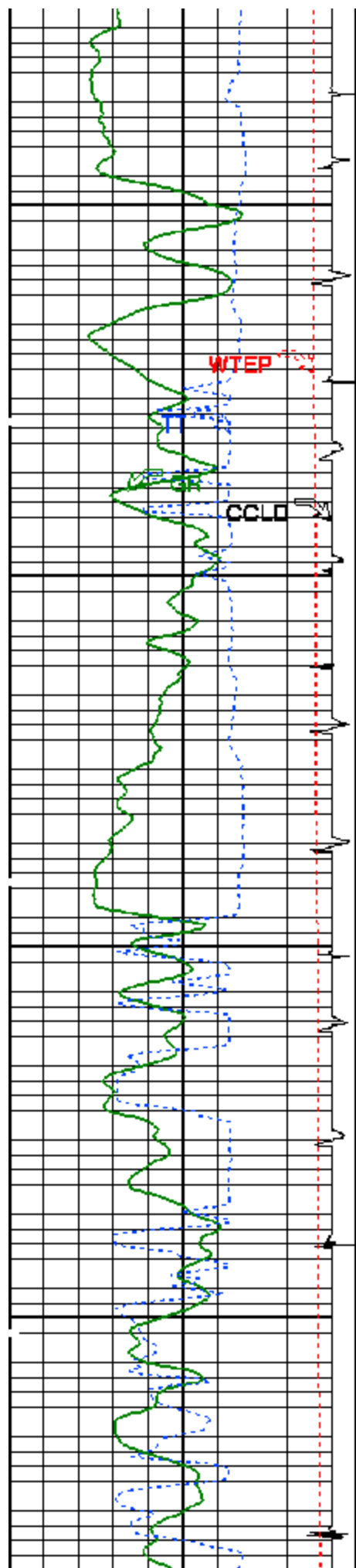


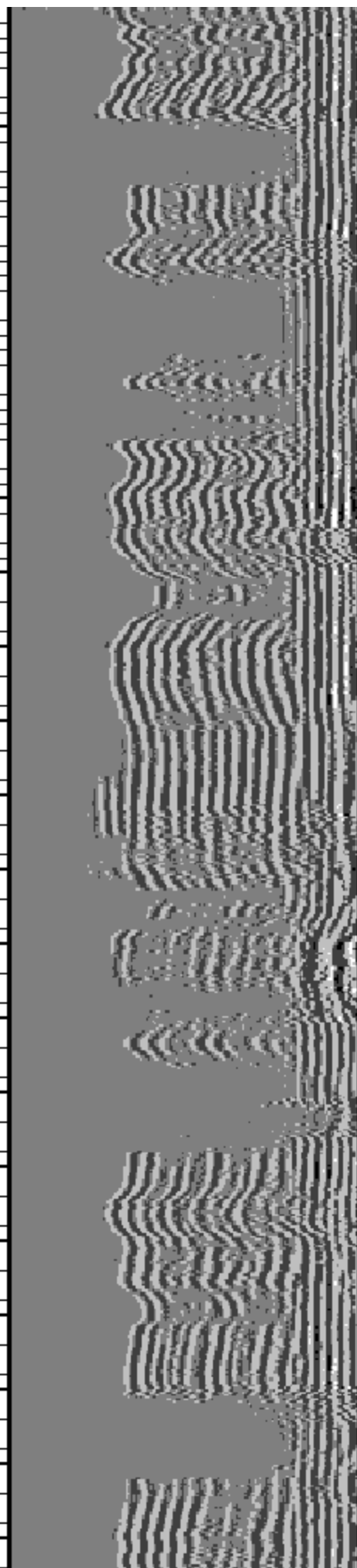
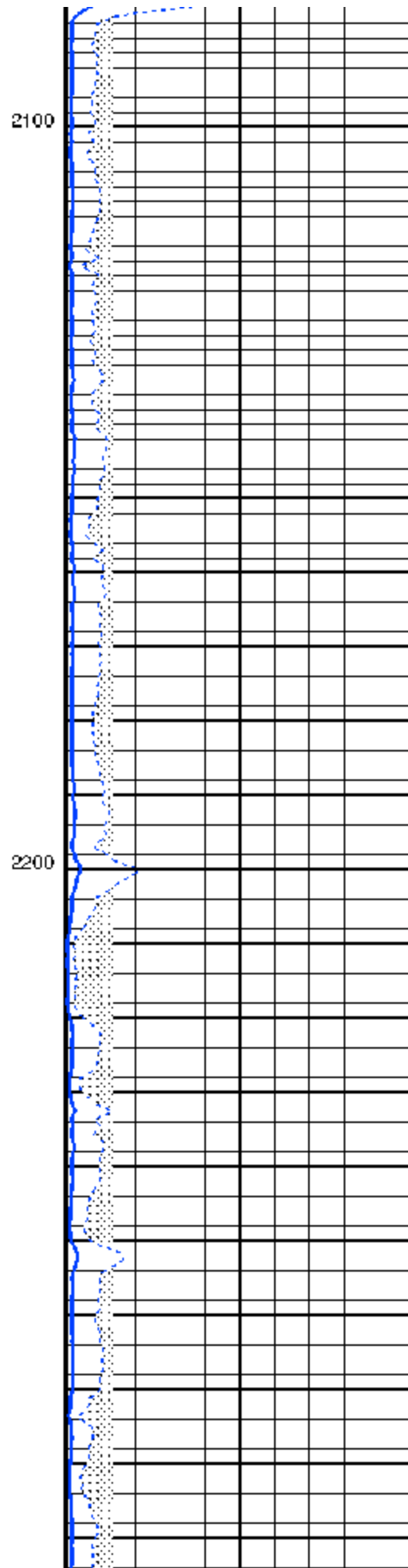
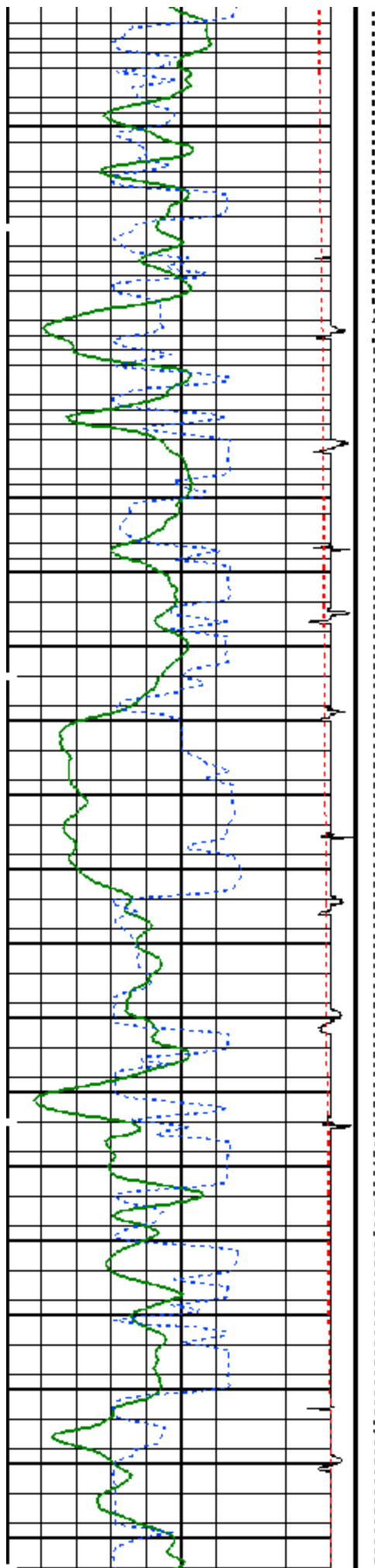


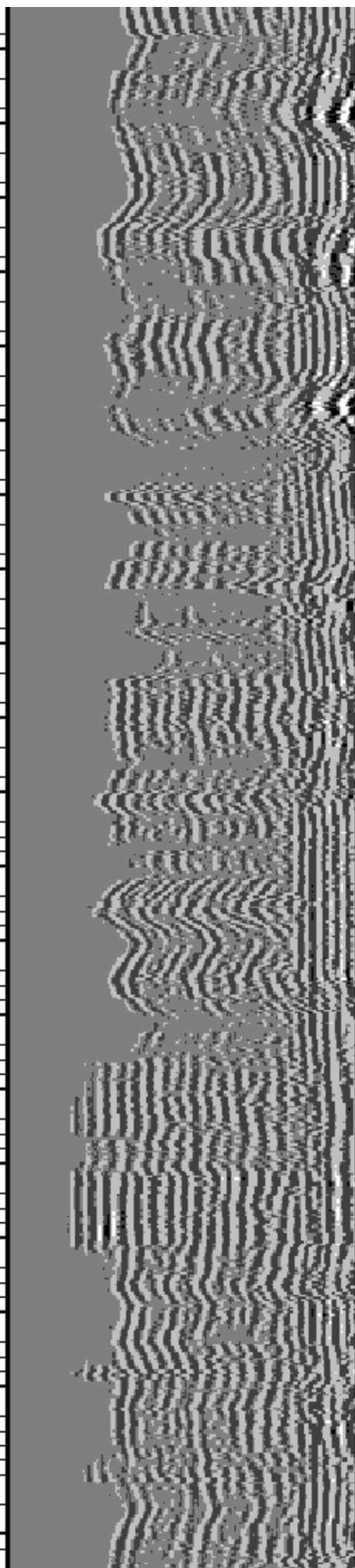
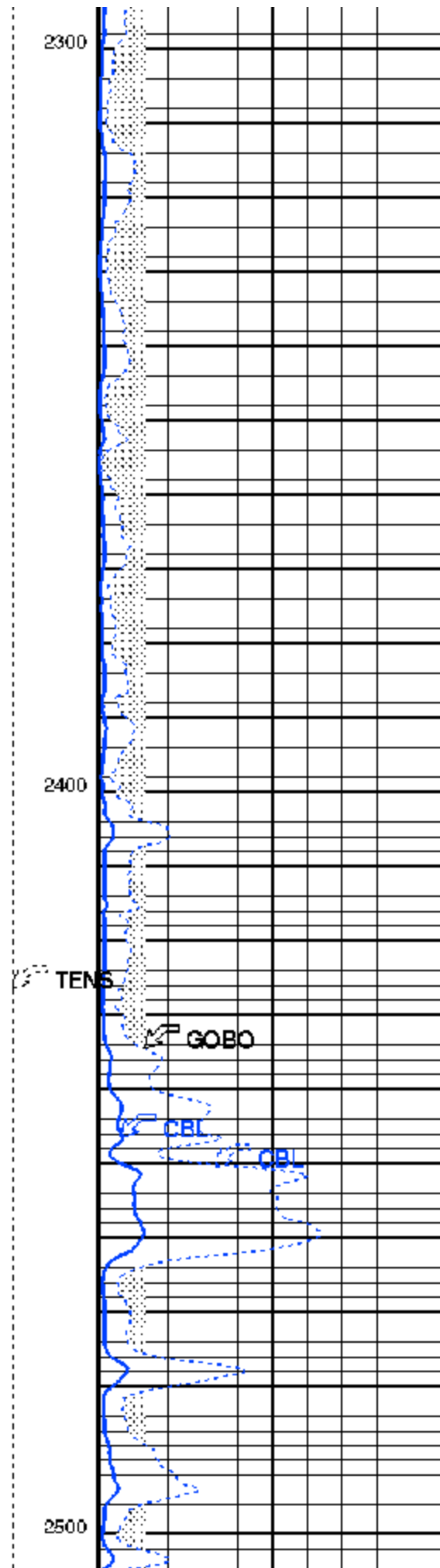
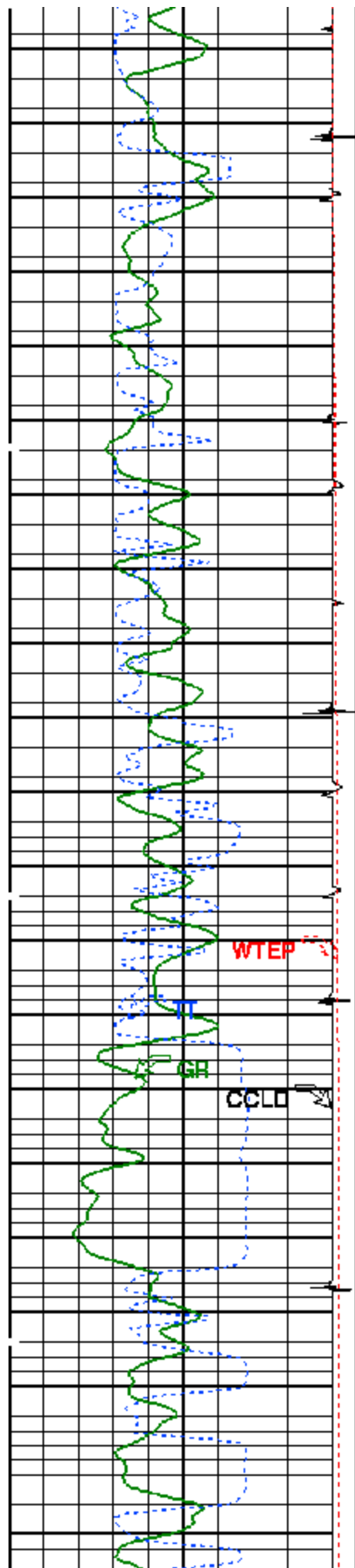
1700

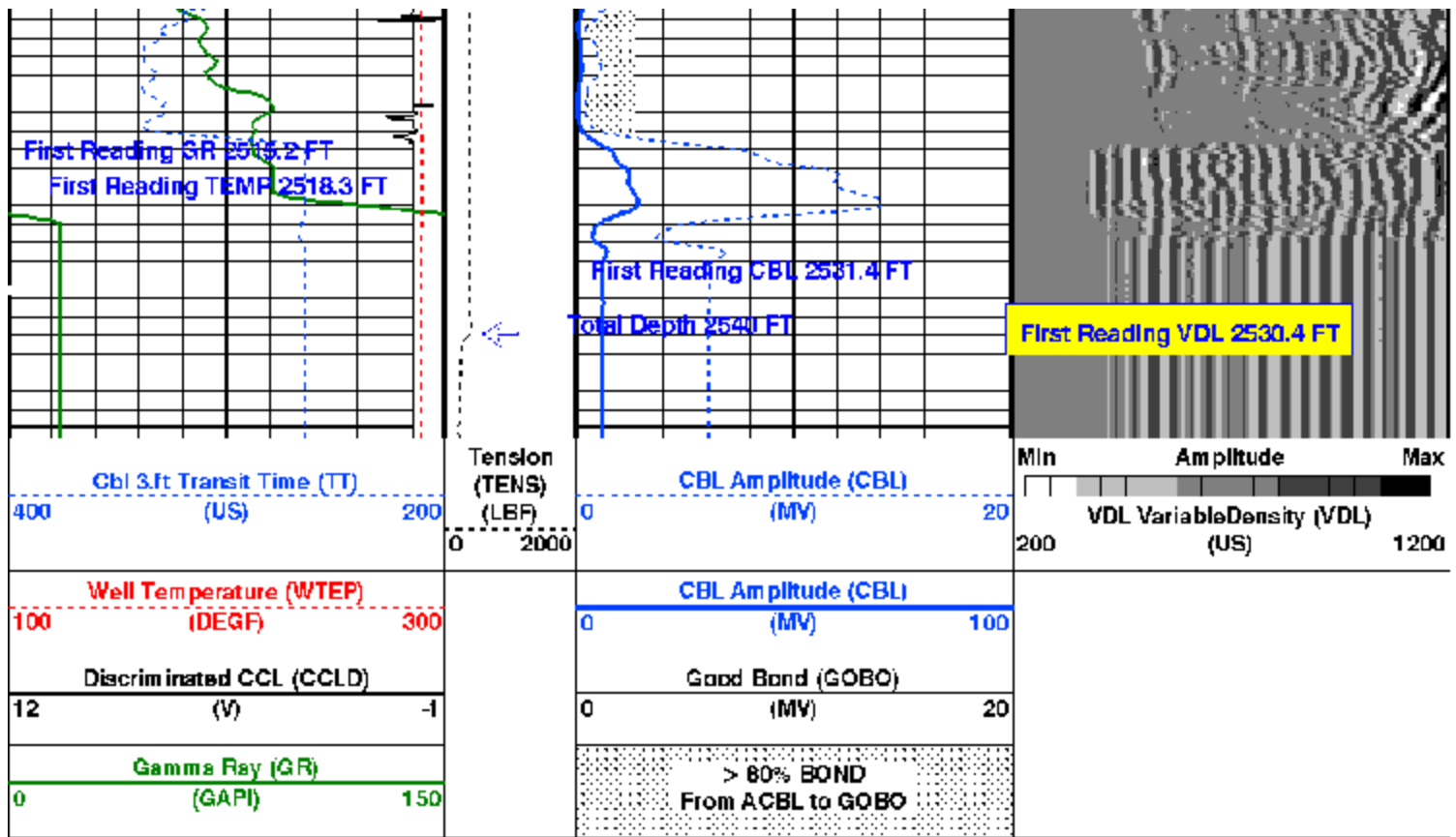
1800











Time Mark Every 60 S

Format: Scmt_Amp_VDL Vertical Scale: 5" per 100'

Graphics File Created: 28-Aug-2008 09:54

OP System Version: 15C0-309

MCM

SCMT-CA

SRPC-3582-Q1_2008_OP15


PSPT-A/B

SRPC-3582-Q1_2008_OP15

Parameters

DLIS Name	Description	Value
SCMT-CA: Slim Cement Mapping Tool, 1-11/16 OD		
BILI	Bond Index Level for Zone Isolation	0.8
BISS	Bond Index Source Selection for BIQL	BI
CB3D	SCMT CBL 3 ft Peak Detection Mode	PEAK
CB3G	SCMT CBL 3 ft Peak Detection T0_Delay and Noise Gate	238.059 US
CB3T	SCMT CBL 3 ft Fixed Threshold Level	20 MV
CB5D	SCMT CBL 5 ft Peak Detection Mode	PEAK
CB5G	SCMT CBL 5 ft Peak Detection T0_Delay and Noise Gate	352.059 US
CB5T	SCMT CBL 5 ft Fixed Threshold Level	20 MV
CBLG	CBL Gate Width	40 US
CBRA	CBL LQC Reference Amplitude in Free Pipe	71 MV
CMCF	CBL Cement Type Compensation Factor	1
CMTC	SCMT Slow Channel Multiplexer Mode	SCAN
CMTM	SCMT Operating Mode	LOG
CMTF	SCMT Tool position on CAN	3
CSCS	SCMT Slow Channel Index	VCC
CTHI	Casing Thickness	0.306128 IN
DTF	Delta-T Fluid	189 US/F
FATT	Acoustic Attenuation due to Fluid	0 DB/F
FCF	CBL Fluid Compensation Factor	0.930926
GOBO	Good Bond	2.63842 MV
MAPD	SCMT MAP Peak Detection Mode	PEAK
MAPG	SCMT MAP Peak Detection T0_Delay and Noise Gate	181.059 US
MAPT	SCMT MAP Fixed Threshold Level	30 MV
MATT	Maximum Attenuation	13.848 DB/F
MCCF	MAP Cement Type Compensation Factor	1
MCI	Minimum Cemented Interval for Isolation	4.75 FT
MMSA	MAP Minimum Sonic Amplitude	7.35072 MV
MSA	Minimum Sonic Amplitude	1.15842 MV
PFDF	Peak Detection On/Off Switch in Playback	OFF

HBC	Relative Bearing Correction Allow/Disallow	ALLOW	
VDLG	VDL Manual Gain	5	
ZCMT	Acoustic Impedance of Cement	6.8	MRAY
PSPT-A/B: Production Services Logging Platform			
BHS	Borehole Status	CASED	
BHT	Bottom Hole Temperature (used in calculations)	89	DEGF
CSID	Casing Size I.D.	4.892	IN
GCSE	Generalized Calliper Selection	BS	
GDEV	Average Angular Deviation of Borehole from Normal	0	DEG
GGRD	Geothermal Gradient	0.01	DEG/F
GRSE	Generalized Mud Resistivity Selection	CHART GEN 0	
GTSE	Generalized Temperature Selection	LINEAR_ESTIMATE	
ISSBAR	Barite Mud Switch	NOBARITE	
MATR	Rock Matrix for Neutron Porosity Corrections	SANDSTONE	
PEPO	PEMS Tool position on CAN	2	
PCCG	PEMS CCL Gain	DB0	
PSTP	PSTC Tool Position on CAN Bus	1	
SHT	Surface Hole Temperature	65	DEGF
System and Miscellaneous			
ALTOPCHAN	Name of alternate depth channel	SpeedCorrectedDepth	
BS	Bit Size	7.875	IN
BSAL	Borehole Salinity	-50000.00	PPM
CSIZ	Current Casing Size	5.500	IN
CWEI	Casing Weight	17.00	LB/F
DFD	Drilling Fluid Density	8.34	LB/G
FLEV	Fluid Level	0.00	FT
MST	Mud Sample Temperature	-50000.00	DEGF
PEVSADP	Use alternate depth channel for playback	NO	
RMFS	Resistivity of Mud Filtrate Sample	-50000.0000	OHMM
RW	Resistivity of Connate Water	1.0000	OHMM
TD	Total Depth	-50000	FT
TDD	Total Depth - Driller	2589.00	FT
TDL	Total Depth - Logger	2540.00	FT
TWS	Temperature of Connate Water Sample	100.00	DEGF
Output DLIS Files			
DEFAULT	SCMT_PSP_005LUP	FN:4	PRODUCER 28-Aug-2008 09:54

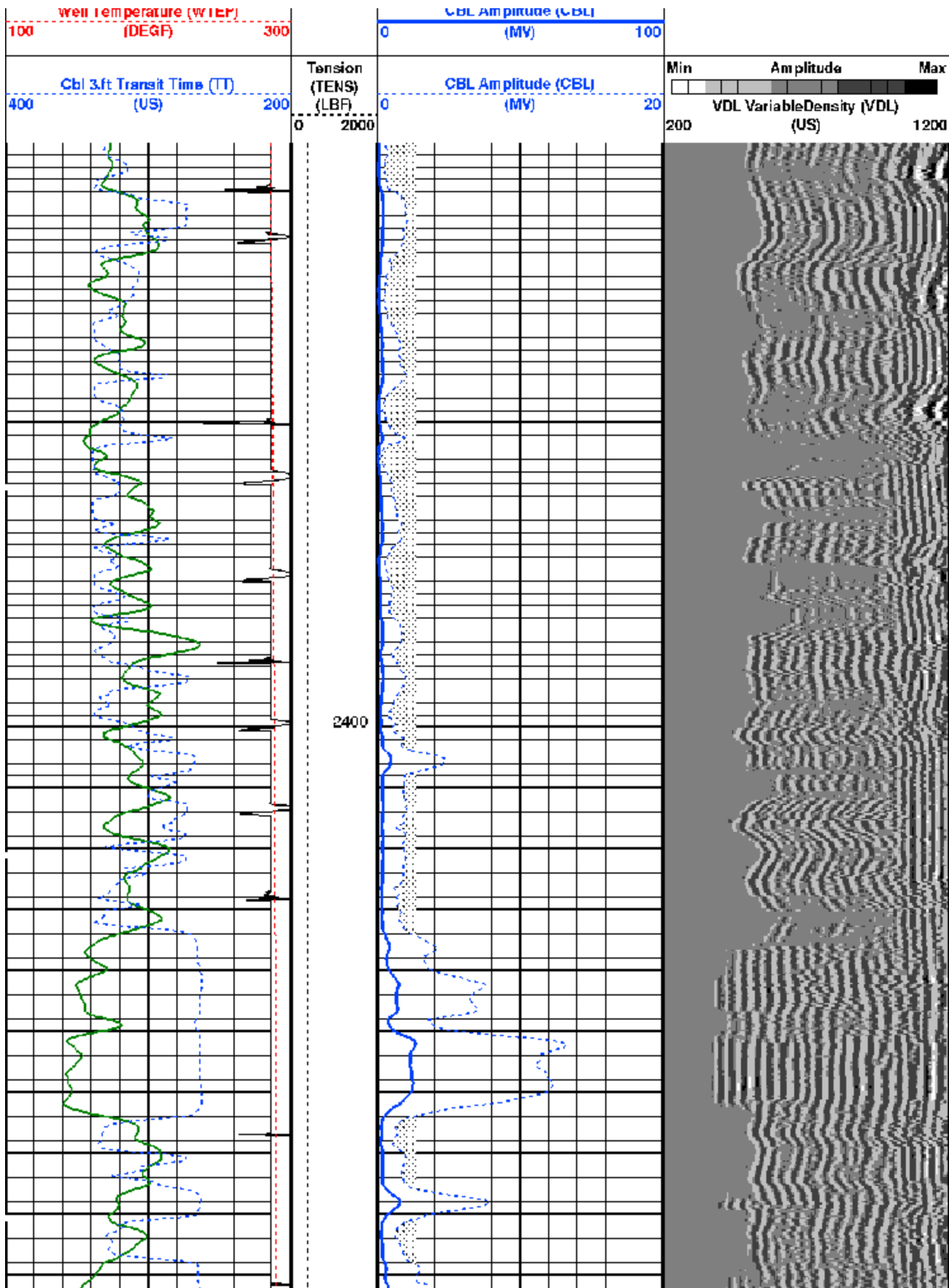


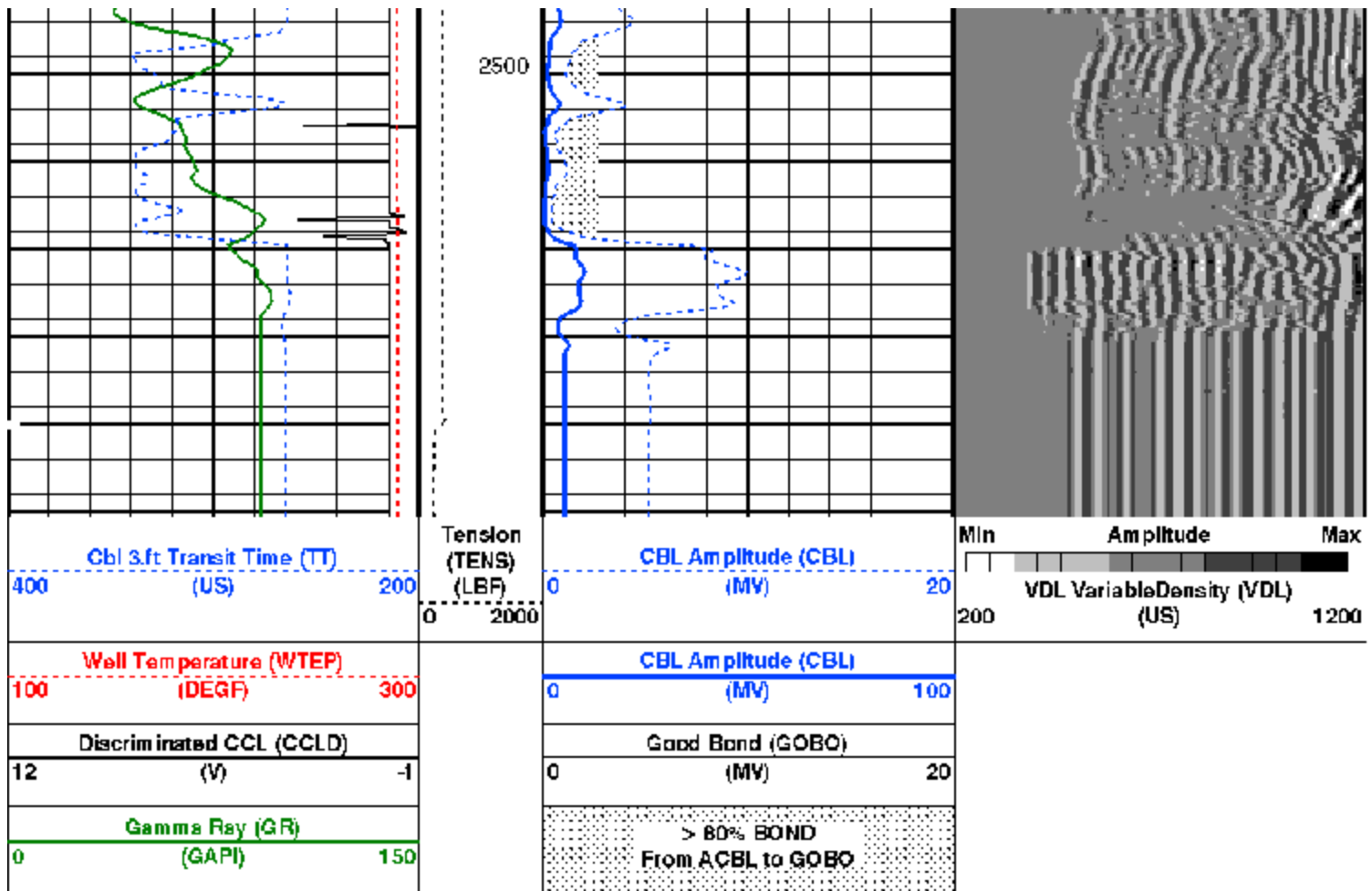
REPEAT PASS

MAXIS Field Log

Company: GENESIS GAS & OIL, LLC				Well: FLETCHER GULCH 4-44			
Output DLIS Files							
DEFAULT	SCMT_PSP_004LUP	FN:3	PRODUCER	28-Aug-2008 09:47	2550.5 FT	2303.6 FT	
OP System Version: 15C0-309							
MCM							
SCMT-CA	SRPC-3582-Q1_2008_OP15	PSPT-A/B		SRPC-3582-Q1_2008_OP15			

PIP SUMMARY			
Time Mark Every 60 S			
Gamma Ray (GR)		<div>> 80% BOND</div> <div>From ACBL to GOBO</div>	
0	(GAPI) 150		
Discriminated CCL (CCLD)		Good Bond (GOBO)	
12	(V) -1	0	(MV) 20





Time Mark Every 60 S

Format: Scmt_Amp_VDL Vertical Scale: 5" per 100'

Graphics File Created: 28-Aug-2008 09:47

OP System Version: 15C0-309

MCM

SCMT-CA

SRPC-3582-Q1_2008_OP15

PSPT-A/B

SRPC-3582-Q1_2008_OP15

Parameters

DLIS Name	Description	Value
SCMT-CA: Slim Cement Mapping Tool, 1-11/16 OD		
BILI	Bond Index Level for Zone Isolation	0.8
BISS	Bond Index Source Selection for BIQL	BI
CB3D	SCMT CBL 3 ft Peak Detection Mode	PEAK
CB3G	SCMT CBL 3 ft Peak Detection T0 Delay and Noise Gate	238.059 US
CB3T	SCMT CBL 3 ft Fixed Threshold Level	20 MV
CB5D	SCMT CBL 5 ft Peak Detection Mode	PEAK
CB5G	SCMT CBL 5 ft Peak Detection T0 Delay and Noise Gate	352.059 US
CB5T	SCMT CBL 5 ft Fixed Threshold Level	20 MV
CBLG	CBL Gate Width	40 US
CBRA	CBL LOC Reference Amplitude in Free Pipe	71 MV
CMCF	CBL Cement Type Compensation Factor	1
CMTC	SCMT Slow Channel Multiplexer Mode	SCAN
CMTM	SCMT Operating Mode	LOG
CMTP	SCMT Tool position on CAN	3
CSCS	SCMT Slow Channel Index	VCC
CTHI	Casing Thickness	0.306128 IN
DTF	Delta-T Fluid	189 US/F
FATT	Acoustic Attenuation due to Fluid	0 DB/F
FCF	CBL Fluid Compensation Factor	0.930926
GOBO	Good Bond	2.63842 MV
MAPD	SCMT MAP Peak Detection Mode	PEAK
MAPG	SCMT MAP Peak Detection T0 Delay and Noise Gate	181.059 US
MAPT	SCMT MAP Fixed Threshold Level	30 MV
MATT	Maximum Attenuation	13.848 DB/F

MCCF	MAP Cement Type Compensation Factor	1	
MCI	Minimum Cemented Interval for Isolation	4.75	FT
MMSA	MAP Minimum Sonic Amplitude	7.35072	MV
MSA	Minimum Sonic Amplitude	1.15842	MV
PEDE	Peak Detection On/Off Switch In Playback	OFF	
RBC	Relative Bearing Correction Allow/Disallow	ALLOW	
VDLG	VDL Manual Gain	5	
ZCMT	Acoustic Impedance of Cement	6.8	MRAY
PSPT-A/B: Production Services Logging Platform			
BHS	Borehole Status	CASED	
BHT	Bottom Hole Temperature (used in calculations)	212	DEGF
CSID	Casing Size I.D.	4.892	IN
GCSE	Generalized Caliper Selection	BS	
GDEV	Average Angular Deviation of Borehole from Normal	0	DEG
GGRD	Geothermal Gradient	0.01	DF/F
GRSE	Generalized Mud Resistivity Selection	CHART GEN 9	
GTSE	Generalized Temperature Selection	LINEAR ESTIMATE	
ISSBAR	Barite Mud Switch	NOBARITE	
MATR	Rock Matrix for Neutron Porosity Corrections	SANDSTONE	
PBPO	PBMS Tool position on CAN	2	
PCCG	PBMS CCL Gain	DB12	
PSTP	PSTC Tool Position on CAN Bus	1	
SHT	Surface Hole Temperature	68	DEGF
System and Miscellaneous			
ALTDCHAN	Name of alternate depth channel	SpeedCorrectedDepth	
BS	Bit Size	7.875	IN
BSAL	Borehole Salinity	-50000.00	PPM
CSIZ	Current Casing Size	5.500	IN
CWEI	Casing Weight	17.00	LB/F
DFD	Drilling Fluid Density	8.34	LB/G
FLEV	Fluid Level	0.00	FT
MST	Mud Sample Temperature	-50000.00	DEGF
PBVSADP	Use alternate depth channel for playback	NO	
RMFS	Resistivity of Mud Filtrate Sample	-50000.0000	OHMM
RW	Resistivity of Connate Water	1.0000	OHMM
TD	Total Depth	-50000	FT
TDD	Total Depth - Driller	2589.00	FT
TDL	Total Depth - Logger	-50000.00	FT
TWS	Temperature of Connate Water Sample	100.00	DEGF

Output DLIS Files

DEFAULT SCMT_PSP_004LUP FN:3 PRODUCER 28-Aug-2008 09:47

Company: **GENESIS GAS & OIL, LLC**

Schlumberger

Well: **FLETCHER GULCH 4-44**

Field: **WILDCAT**

County: **RIO BLANCO**

State: **COLORADO**

CEMENT BOND LOG

COLLARS

GAMMA RAY/PRESSURE/TEMPERATURE