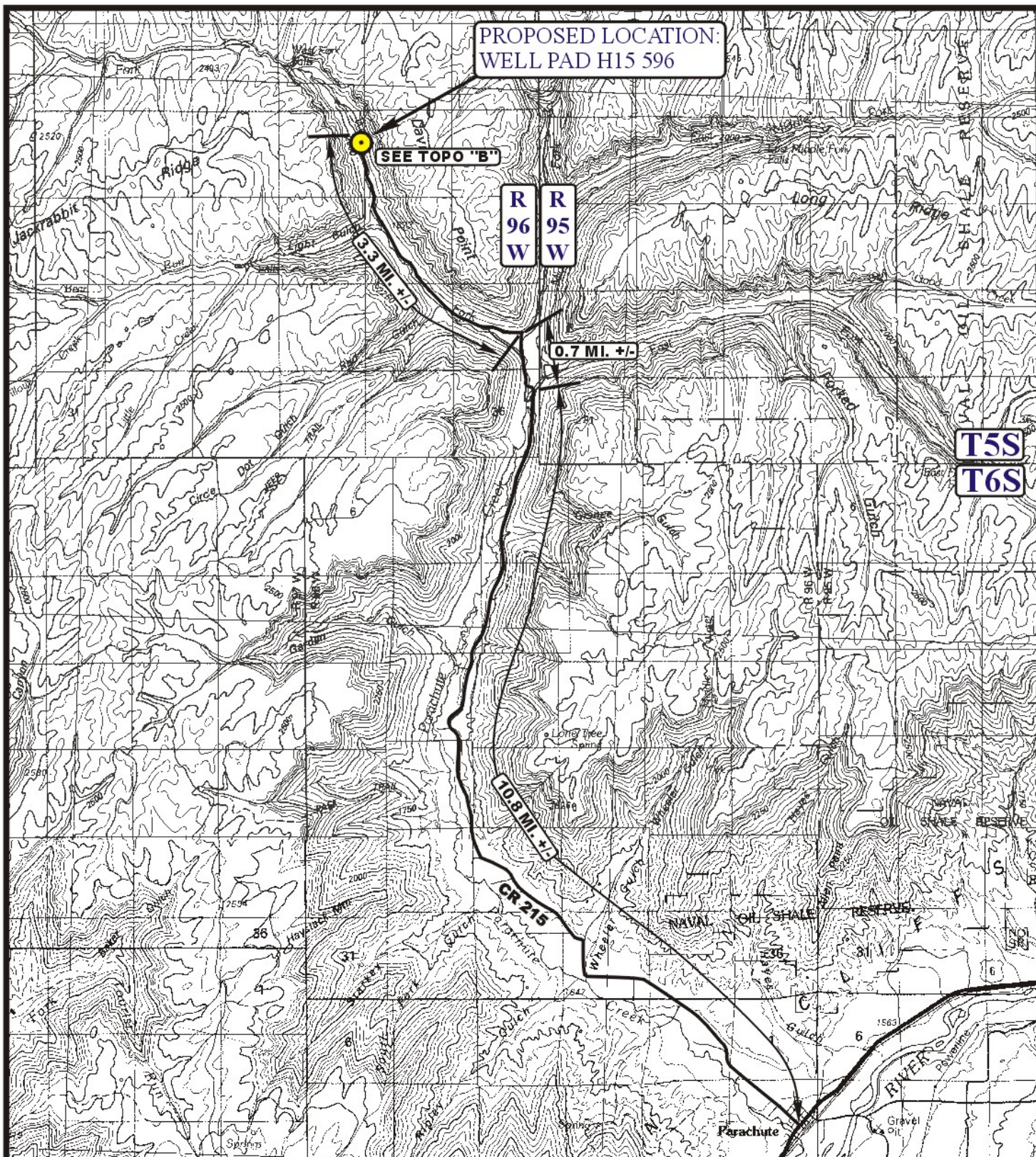


Encana OIL & GAS (USA) INC.
WELL PAD H15 596
SECTION 15, T5S, R96W, 6th P.M.

PROCEED IN A NORTHWESTERLY, THEN NORTHERLY DIRECTION ALONG COUNTY ROAD 215 APPROXIMATELY 10.8 MILES TO THE JUNCTION OF THIS ROAD AND AN EXISTING ROAD TO THE NORTHWEST; TURN LEFT AND PROCEED IN A NORTHWESTERLY, THEN NORTHERLY DIRECTION APPROXIMATELY 0.7 MILES TO THE JUNCTION OF THIS ROAD AND AN EXISTING ROAD TO THE NORTHWEST; TURN LEFT AND PROCEED IN A NORTHWESTERLY DIRECTION APPROXIMATELY 3.3 MILES TO THE BEGINNING OF THE PROPOSED ACCESS ROAD TO THE SOUTHEAST; FOLLOW ROAD FLAGS IN A SOUTHEASTERLY DIRECTION APPROXIMATELY 146' TO THE PROPOSED LOCATION.

TOTAL DISTANCE FROM PARACHUTE COLORADO TO THE PROPOSED LOCATION IS APPROXIMATELY 14.8 MILES.



LEGEND:

 **PROPOSED LOCATION**

Encana OIL & GAS (USA) INC.

WELL PAD H15 596
SECTION 15, T5S, R96W, 6th P.M.
SE 1/4 NE 1/4

SHEET 8 of 11



Uintah Engineering & Land Surveying
 85 South 200 East Vernal, Utah 84078
 (435) 789-1017 * FAX (435) 789-1813

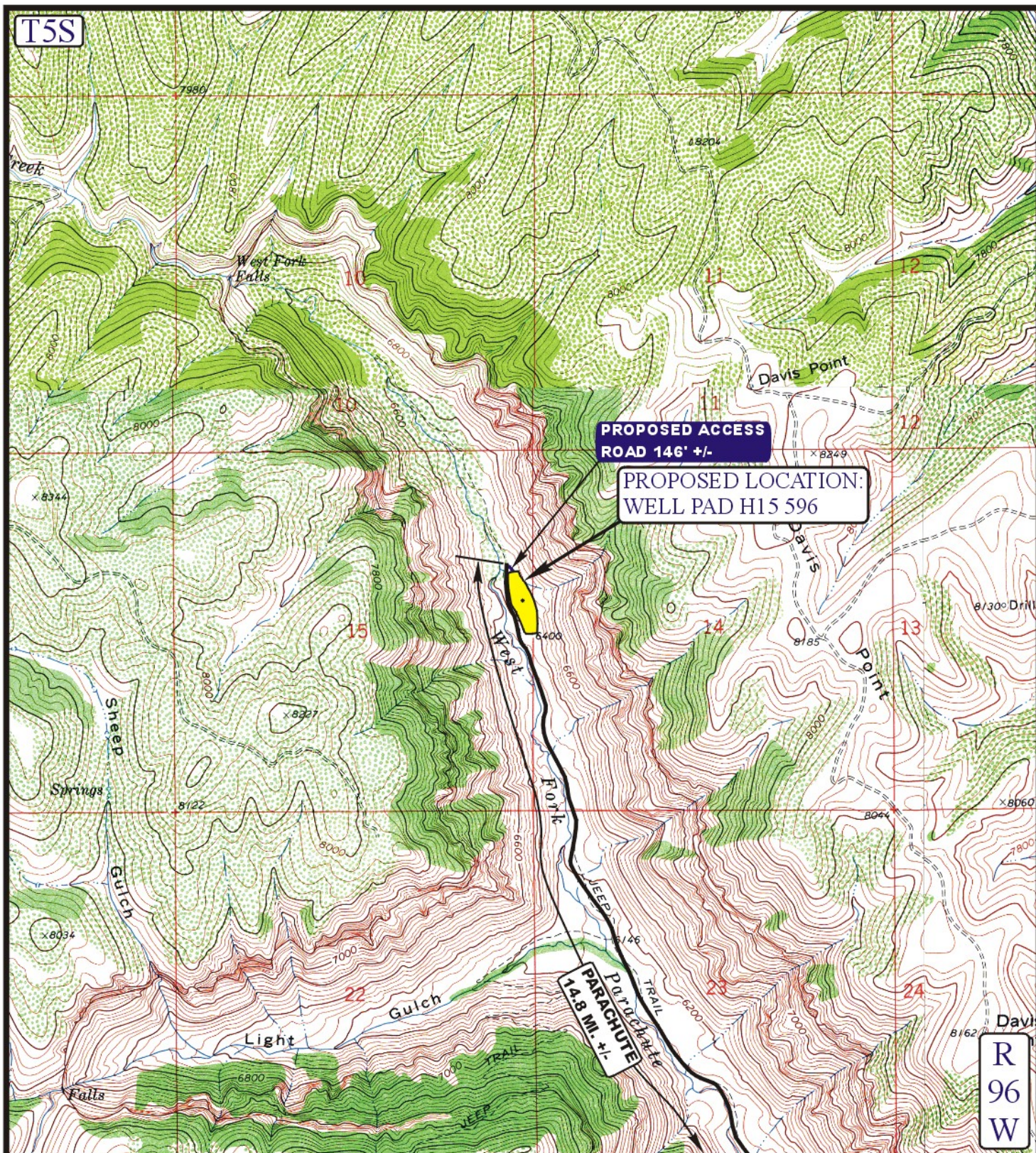


TOPOGRAPHIC
MAP

02 17 11
 MONTH DAY YEAR

SCALE: 1:100,000 DRAWN BY: J.L.G. REVISED: 00-00-00





LEGEND:

----- PROPOSED ACCESS ROAD
 _____ EXISTING ROAD

Encana OIL & GAS (USA) INC.

WELL PAD H15 596
SECTION 15, T5S, R96W, 6th P.M.
SE 1/4 NE 1/4

SHEET 9 of 11



Uintah Engineering & Land Surveying
 85 South 200 East Vernal, Utah 84078
 (435) 789-1017 * FAX (435) 789-1813

TOPOGRAPHIC
MAP

02 17 11
 MONTH DAY YEAR

SCALE: 1" = 2000' DRAWN BY: J.L.G. REVISED: 00-00-00

B
 TOPO