

SCALE

Sheet 1ii of 11



Encana Oil &
Gas (USA) INC.

SWMP LEGEND:
SCE - STABILIZED
CONSTRUCTION
ENTRANCE
FD - FILTER DAM
M - MULCH

Encana Oil &
Gas (USA) INC.

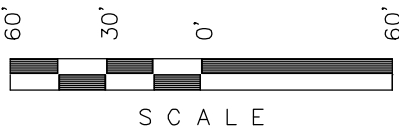
SCALE: 1" = 60'
DATE: 03-09-11
DRAWN BY: D.R.B.
Revised: 07-07-11 D.R.B.
Revised: 07-13-11 D.R.B.
Revised: 08-03-11 D.R.B.

NOTE:
Flare Pit is to
be located a min.
of 100' from the
Well Head.

B.L.M.
(U.S.A.)

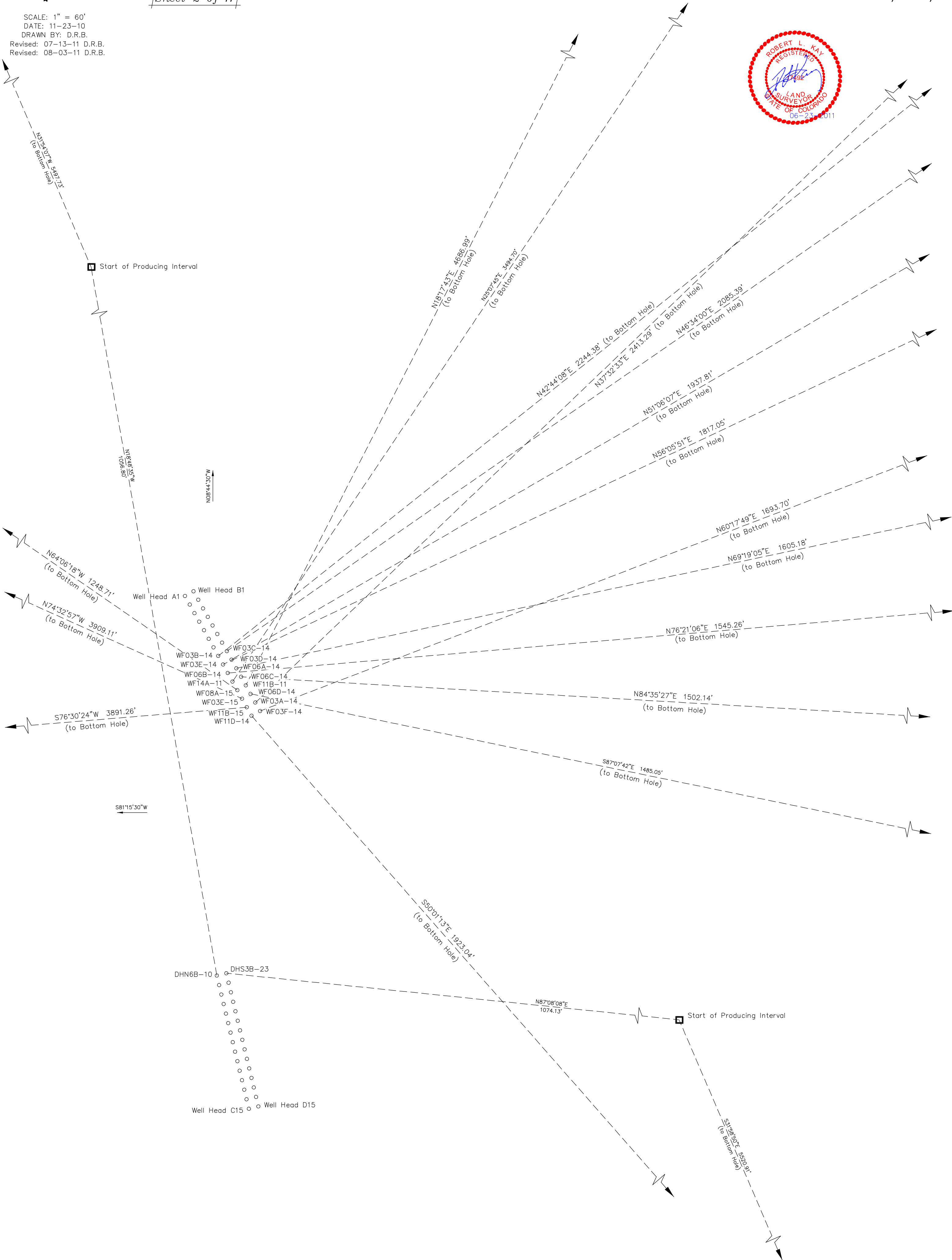
Encana Oil &
Gas (USA) INC.

SURFACE USE OF LOCATION IS
GRAZING. VEGETATION CONSISTS
MAINLY OF SAGEBRUSH, OAK
BRUSH & NATIVE GRASSES.



Sheet 2 of 11

SCALE: 1" = 60'
DATE: 11-23-10
DRAWN BY: D.R.B.
Revised: 07-13-11 D.R.B.
Revised: 08-03-11 D.R.B.



LEGEND:

ST - Septic Tank

G - Generator

WT - Water Tank

Encana Oil &
Gas (USA) INC.

NOTE:

Compact in 6" lifts
and seed ECB infilled
with Flexterra.

SWMP LEGEND:

ECB - EROSION CONTROL

BLANKET

FD - FILTER DAM

LS - LEVEL SPREADER

M - MULCH

SCE - STABILIZED

CONSTRUCTION

ENTRANCE

SedR - SEDIMENT

RESERVOIR

SL - SLASH

ST - SEDIMENT TRAP

T - TERRACING

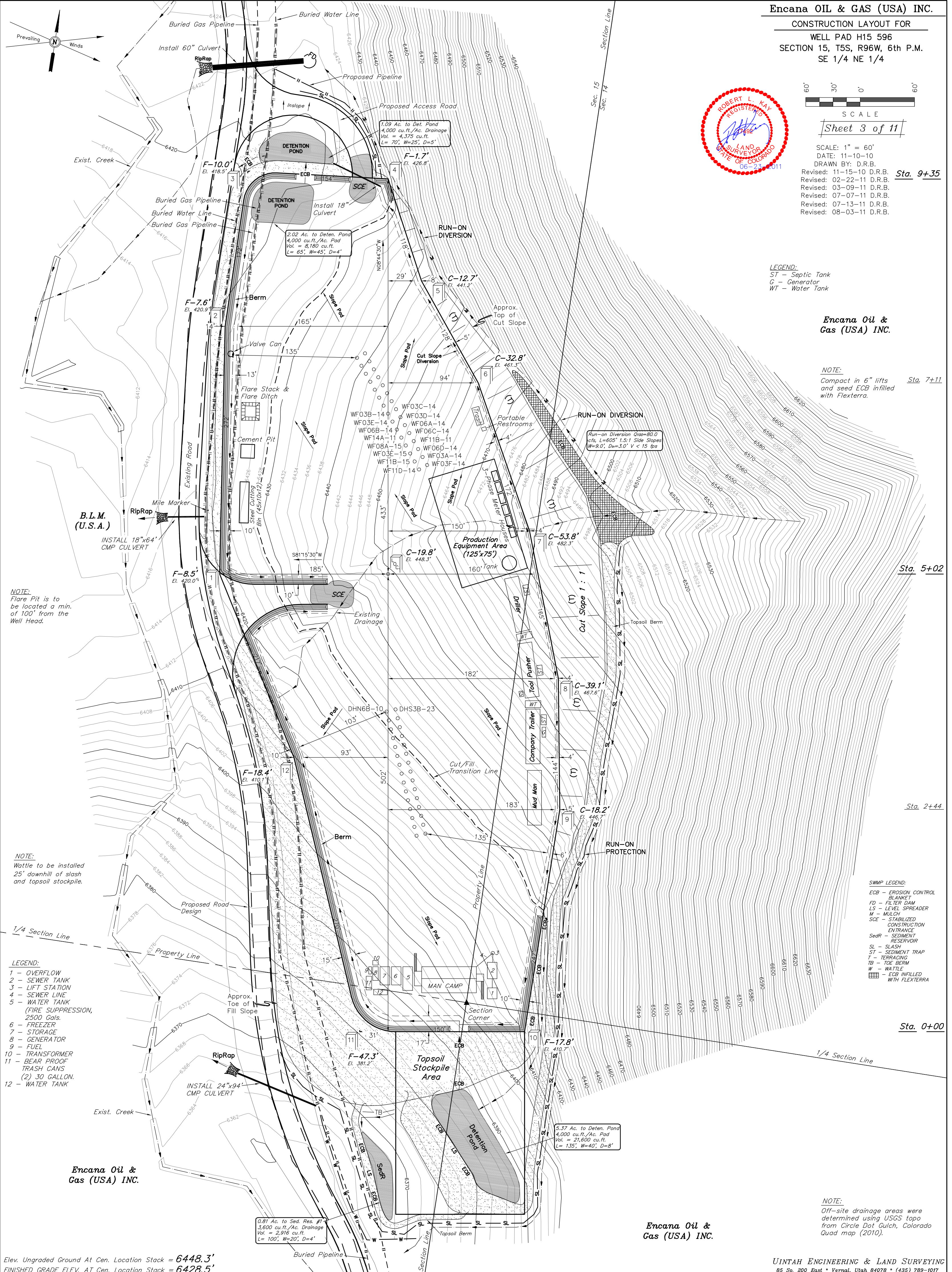
TB - TOE BERM

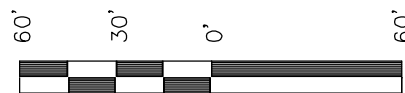
W - WATTLE

W - ECB INFILLED

WITH FLEX TERRA

NOTE:

Off-site drainage areas were
determined using USGS topo
from Circle Dot Gulch, Colorado
Quad map (2010).Encana Oil &
Gas (USA) INC.



Sheet 3a of 11



Encana Oil & Gas (USA) INC.

SWMP LEGEND:
SCE - STABILIZED CONSTRUCTION ENTRANCE
W - WATTLE
ST - SEDIMENT TRAP
FD - FILTER DAM

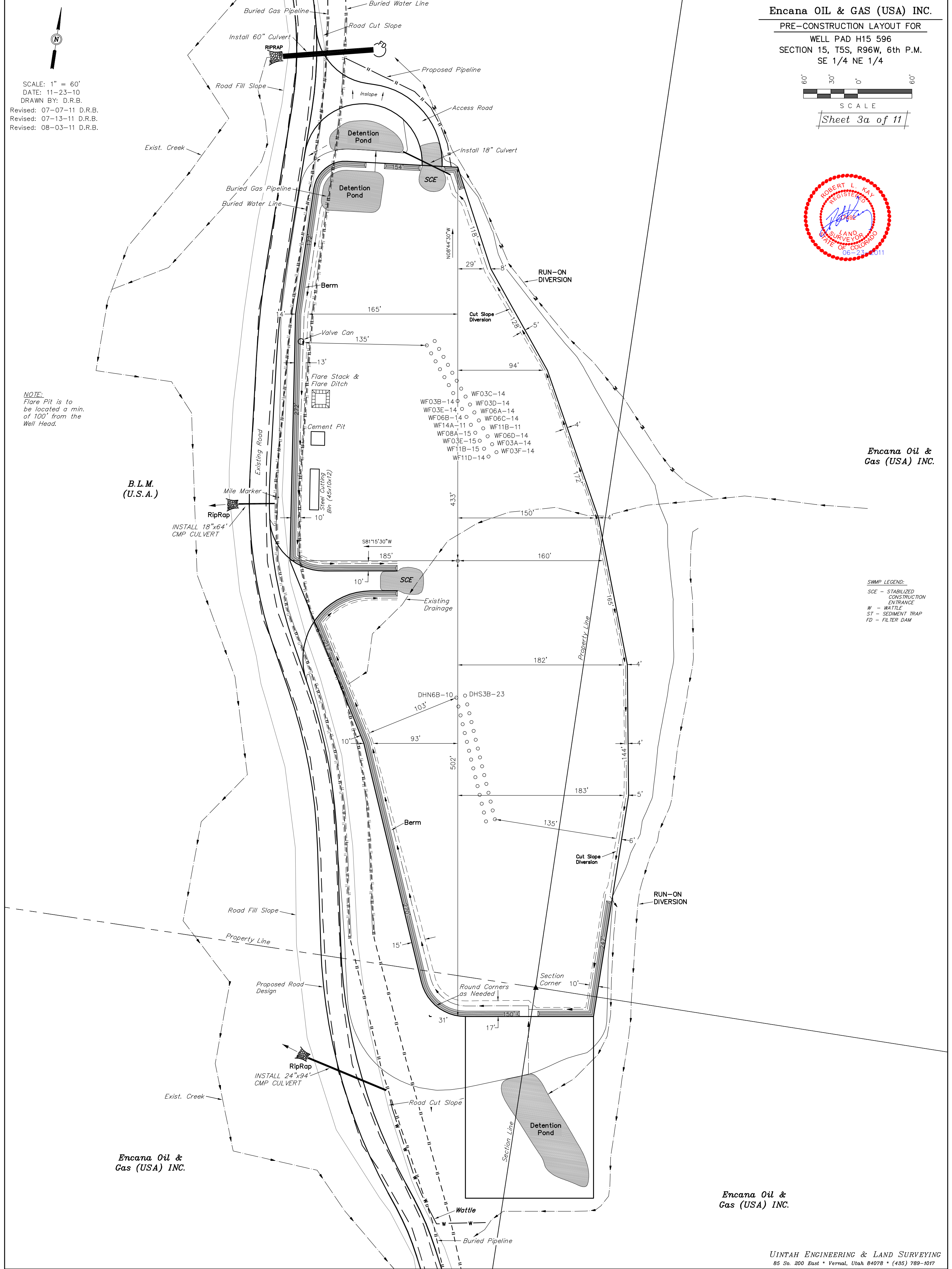
Encana Oil & Gas (USA) INC.

SCALE: 1" = 60'
DATE: 11-23-10
DRAWN BY: D.R.B.
Revised: 07-07-11 D.R.B.
Revised: 07-13-11 D.R.B.
Revised: 08-03-11 D.R.B.

NOTE:
Flare Pit is to be located a min. of 100' from the Well Head.

B.L.M.
(U.S.A.)

Encana Oil & Gas (USA) INC.



1" = 40'
X-Section
Scale
1" = 100'

DATE: 11-11-10
DRAWN BY: D.R.B.
Revised: 03-04-11 P.M.B.

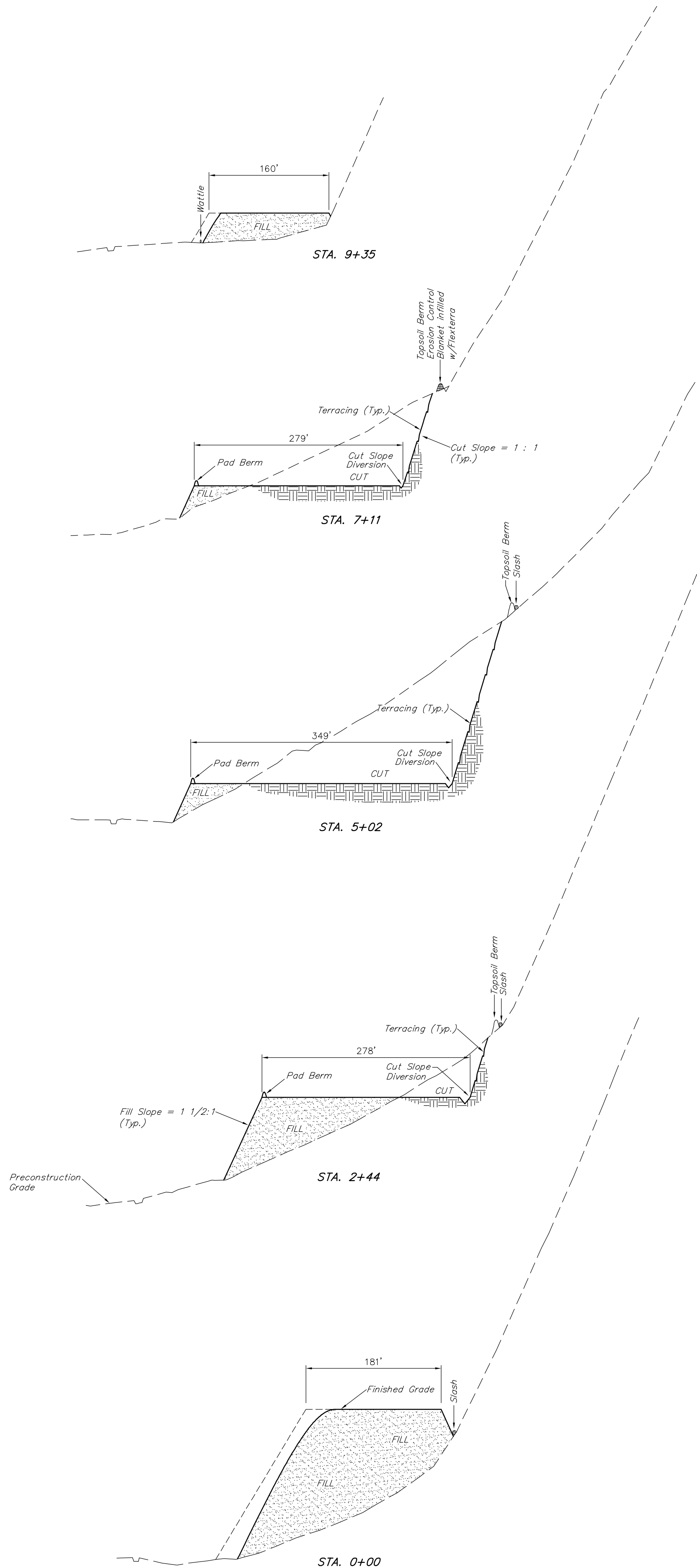
Encana OIL & GAS (USA) INC.
CONSTRUCTION LAYOUT CROSS SECTION FOR

WELL PAD H15 596
SECTION 15, T5S, R96W, 6th P.M.
SE 1/4 NE 1/4

Sheet 4 of 11

NOTE:

Per NRCS U.S. Soil Survey for Rifle Area, Parts of Garfield and Mesa Counties, CO. Site has Channery, Sandy Loam, and Unweathered Bedrock.



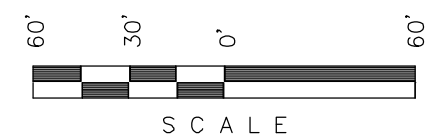
NOTE:
Topsoil should not be Stripped Below Finished Grade on Substructure Area.

APPROXIMATE YARDAGES

(6") Topsoil Stripping = 6,700 Cu. Yds.
Remaining Location = 102,080 Cu. Yds.
TOTAL CUT = 108,780 CU.YDS.
FILL = 102,080 CU.YDS.

EXCESS MATERIAL = 6,700 Cu. Yds.
Topsoil = 6,700 Cu. Yds.
EXCESS UNBALANCE = 0 Cu. Yds.
(After Interim Rehabilitation)

* NOTE:
FILL QUANTITY INCLUDES
5% FOR COMPACTION



Sheet 5 of 11



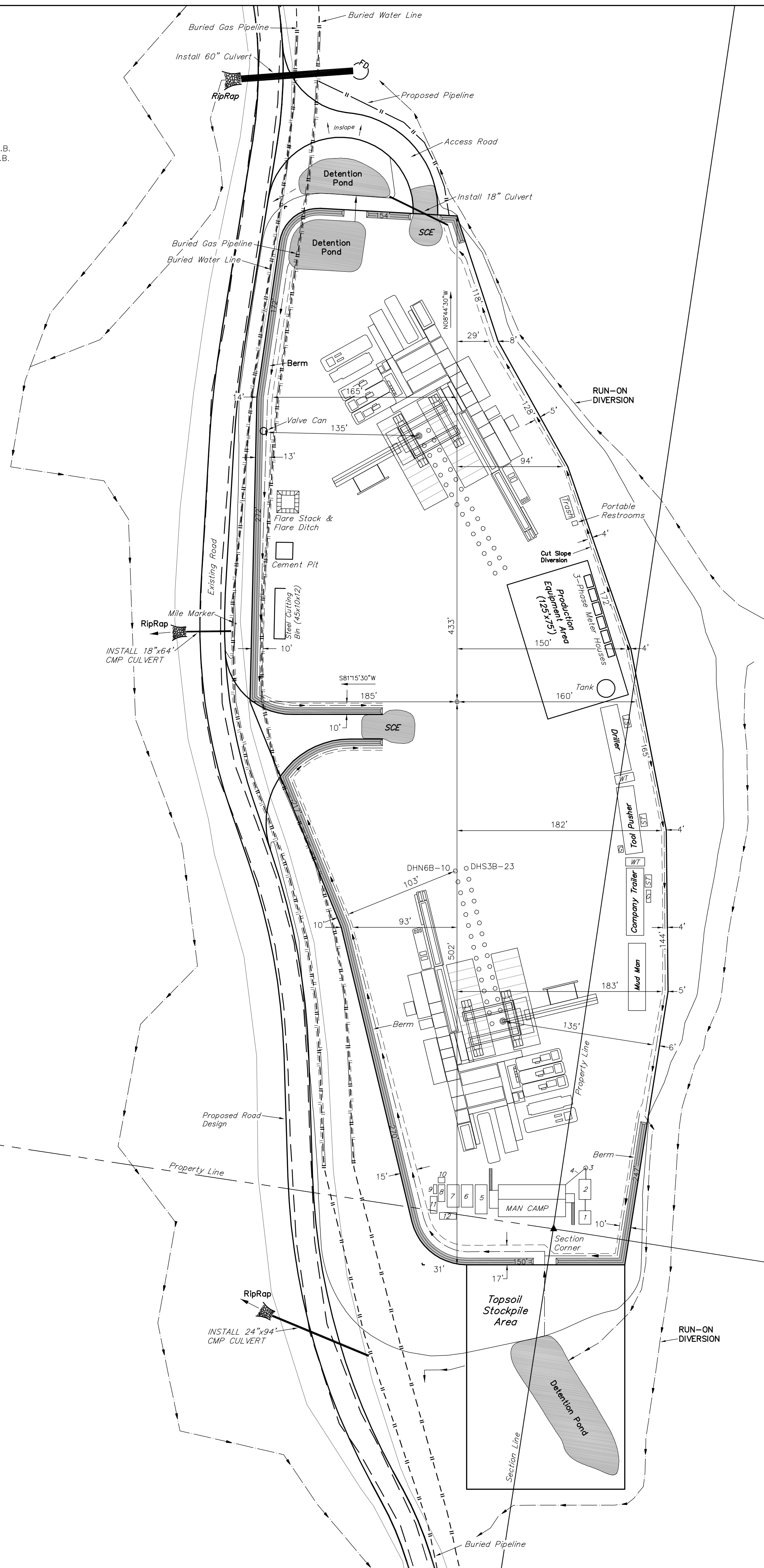
LEGEND:
 ST - Septic Tank
 G - Generator
 WT - Water Tank

SWMP LEGEND:
 SCE - STABILIZED CONSTRUCTION ENTRANCE
 W - WATTLE
 ST - SEDIMENT TRAP
 FD - FILTER DAM

LEGEND:
 1 - OVERFLOW
 2 - SEWER TANK
 3 - LIFT STATION
 4 - SEWER LINE
 5 - WATER TANK
 (FIRE SUPPRESSION, 2500 Gals.)
 6 - FREEZER
 7 - STORAGE
 8 - GENERATOR
 9 - FUEL
 10 - TRANSFORMER
 11 - BEAR PROOF TRASH CANS
 (2) 30 GALLON.
 12 - WATER TANK

SCALE: 1" = 60'
 DATE: 11-23-10
 DRAWN BY: D.R.B.
 Revised: 07-07-11 D.R.B.
 Revised: 07-13-11 D.R.B.

NOTE:
 Flare Pit is to be located a min. of 100' from the Well Head.





SWMP LEGEND:
RV - REVEGATION
SCE - STABILIZED CONSTRUCTION ENTRANCE

Encana Oil & Gas (USA) INC.

Encana Oil & Gas (USA) INC.

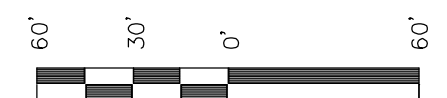
SCALE: 1" = 60'
DATE: 06-21-11
DRAWN BY: D.R.B.
Revised: 07-13-11 D.R.B.
Revised: 08-03-11 D.R.B.

B.L.M.
(U.S.A.)

Encana Oil & Gas (USA) INC.

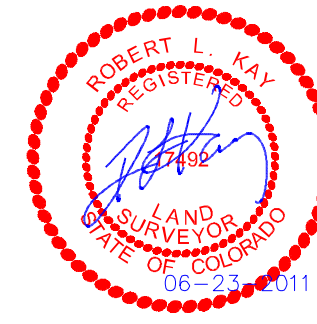
APPROXIMATE ACREAGES
TOTAL RECLAIMED AREA = ± 4.284 ACRES
UN-RECLAIMED AREA = ± 3.386 ACRES

UINTAH ENGINEERING & LAND SURVEYING
85 So. 200 East * Vernal, Utah 84078 * (435) 789-1017



SCALE

Sheet 7 of 11



LINE	BEARING	LENGTH
L1	S49°47'33"W	23.02'
L2	S79°27'30"W	60.67'
L3	N34°41'09"W	59.20'
L4	N53°29'04"W	39.48'
L5	N17°48'29"W	83.42'
L6	N20°47'10"W	52.44'
L7	N07°39'16"W	84.09'
L8	N61°23'07"E	48.75'
L9	S89°35'42"E	57.25'
L10	N09°35'46"W	25.72'
L11	N43°49'37"W	50.63'
L12	N37°24'48"E	40.88'
L13	S57°37'21"E	47.98'
L14	S38°14'08"E	54.59'
L15	S32°20'44"E	74.22'
L16	S51°38'57"E	68.82'
L17	S61°11'04"W	39.71'
L18	S06°03'33"E	48.00'
L19	S34°23'03"W	27.02'

LEGEND:
 ST - Septic Tank
 G - Generator
 WT - Water Tank

Encana Oil &
 Gas (USA) INC.

SWMP LEGEND:
 SCE - STABILIZED
 CONSTRUCTION
 ENTRANCE
 FD - FILTER DAM

SWMP LEGEND:
 CD - CHECK DAM
 ECB - EROSION CONTROL
 BLANKET
 LS - LEVEL SPREADER
 SCE - STABILIZED
 CONSTRUCTION
 ENTRANCE
 SedR - SEDIMENT
 RESERVOIR
 SL - SLASH
 ST - SEDIMENT TRAP
 T - TERRACING
 TB - TOE BERM
 VB - VEGETATED BUFFER
 W - WATTLE
 [Pattern] - ECB INFILLED
 WITH FLEXITERRA

LEGEND:
 1 - OVERFLOW
 2 - SEWER TANK
 3 - LIFT STATION
 4 - SEWER LINE
 5 - WATER TANK
 (FIRE SUPPRESSION,
 2500 Gals.
 6 - FREEZER
 7 - STORAGE
 8 - GENERATOR
 9 - FUEL
 10 - TRANSFORMER
 11 - BEAR PROOF
 TRASH CANS
 (2) 30 GALLON.
 12 - WATER TANK

B.L.M.
 (U.S.A.)

Encana Oil &
 Gas (USA) INC.

Encana Oil &
 Gas (USA) INC.

SCALE: 1" = 60'
 DATE: 03-09-11
 DRAWN BY: D.R.B.
 Revised: 07-07-11 D.R.B.
 Revised: 07-13-11 D.R.B.
 Revised: 08-03-11 D.R.B.

APPROXIMATE ACREAGES

APPROX. WELL DISTURBANCE = ± 9.530 ACRES
 ACCESS ROAD #1 DISTURBANCE = ± 0.203 ACRES
 ACCESS ROAD #2 DISTURBANCE = ± 0.026 ACRES
 PIPELINE DISTURBANCE = ± 0.124 ACRES
 TOTAL = ± 9.883 ACRES