

1625 Broadway  
Suite 2000  
Denver, CO 80202  
  
Tel: 303.228.4000  
Fax: 303.228.4280  
www.nobleenergyinc.com



August 22, 2011

Colorado Oil and Gas Conservation Commission  
The Chancery Building  
1120 Lincoln Street, Suite 801  
Denver, CO 80203  
Attn: Mr. David Neslin, Director

RE: Sandy Hills PC C17-67HN  
Niobrara New Drill  
Township 4 North, Range 64 West, 6th P.M.  
Section 17: SW/4NW/4: 1894' FNL & 522' FWL (Surface Location)  
Section 17: NW/4NW/4: 1309' FNL & 995' FWL (Beginning of Lateral)  
Section 17: NE/4NE/4: 1275' FNL & 535' FEL (Bottom Hole Location)  
Weld County, Colorado

Mr. Neslin:

Noble Energy, Inc. ("NEI") is planning to drill the captioned boundary well in accordance with the provisions of COGCC Rule 318A.e.

NEI's proposed wellbore spacing unit consists of the N/2 Sec 17, T4N, R64W, creating a 320-acre wellbore spacing unit for the Niobrara formation. NEI is the only owner within the proposed wellbore spacing unit, therefore NEI hereby attests that no notice letters are required under COGCC Rule 318A.e.(6).

Enclosed are copies of the following documents to assist you in your review and approval of NEI's proposed APD for the captioned well:

- Map illustrating the proposed wellbore spacing unit and number of Codell/Niobrara/J Sand wells located within the existing 160-acre governmental quarter section(s) (N/2) to be less than eight (8) in accordance with COGCC Rule 318A.f.
- Plat illustrating proposed wellbore spacing unit on existing location plat.

Thank you for your attention to the enclosed. NEI respectfully requests that the COGCC review the enclosed information and approve the Application for Permit to Drill the captioned well.

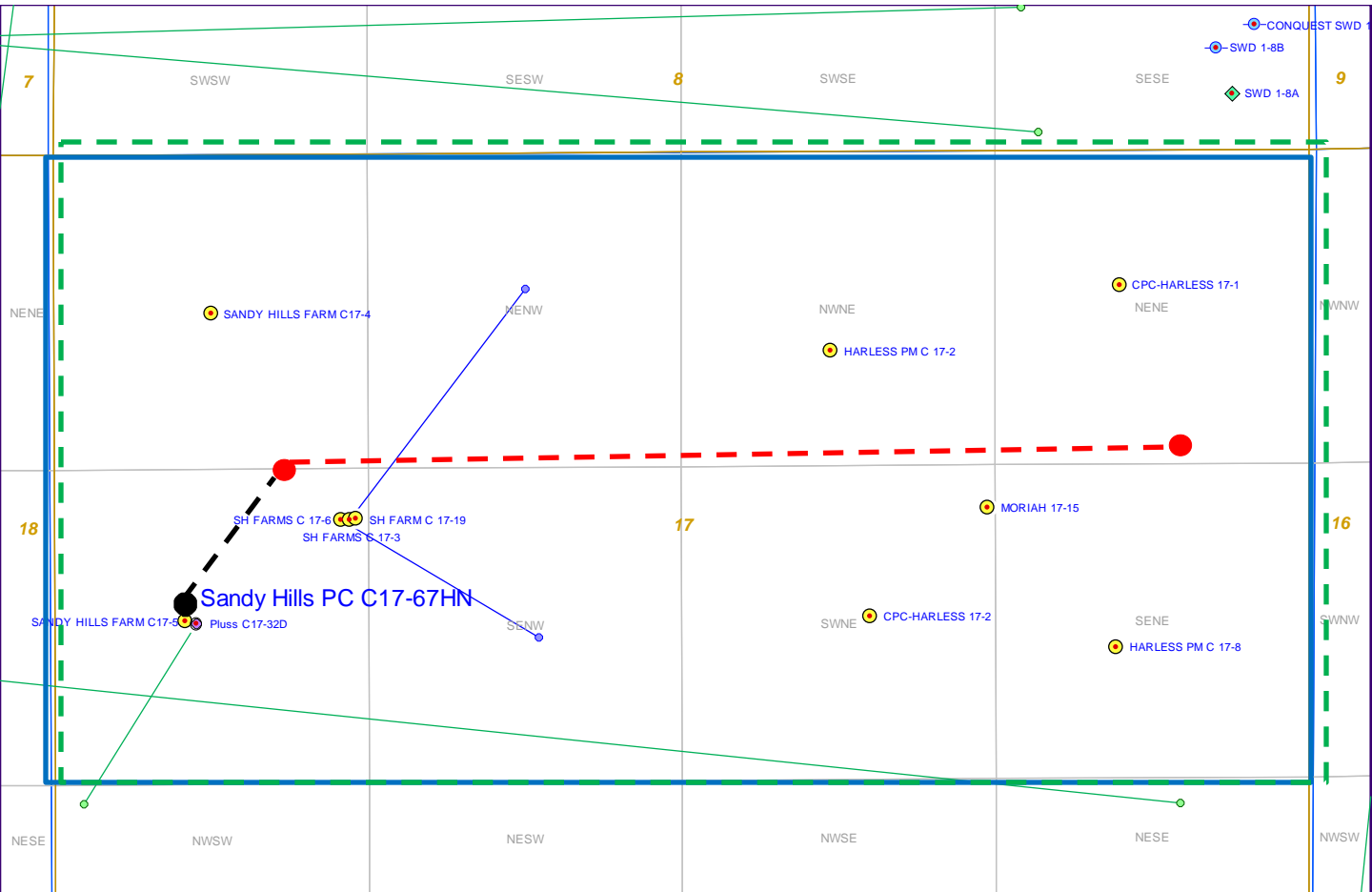
Sincerely,

Justin Garrett  
Regulatory Specialist  
Noble Energy Inc.

# Sandy Hills PC C17-67HN

## Proposed Spacing Unit - Noble Energy, Inc

### N/2 Section 17, Township 4 North, Range 64 West



#### Legend



Proposed 320 acre spacing unit



Bottom Hole Location



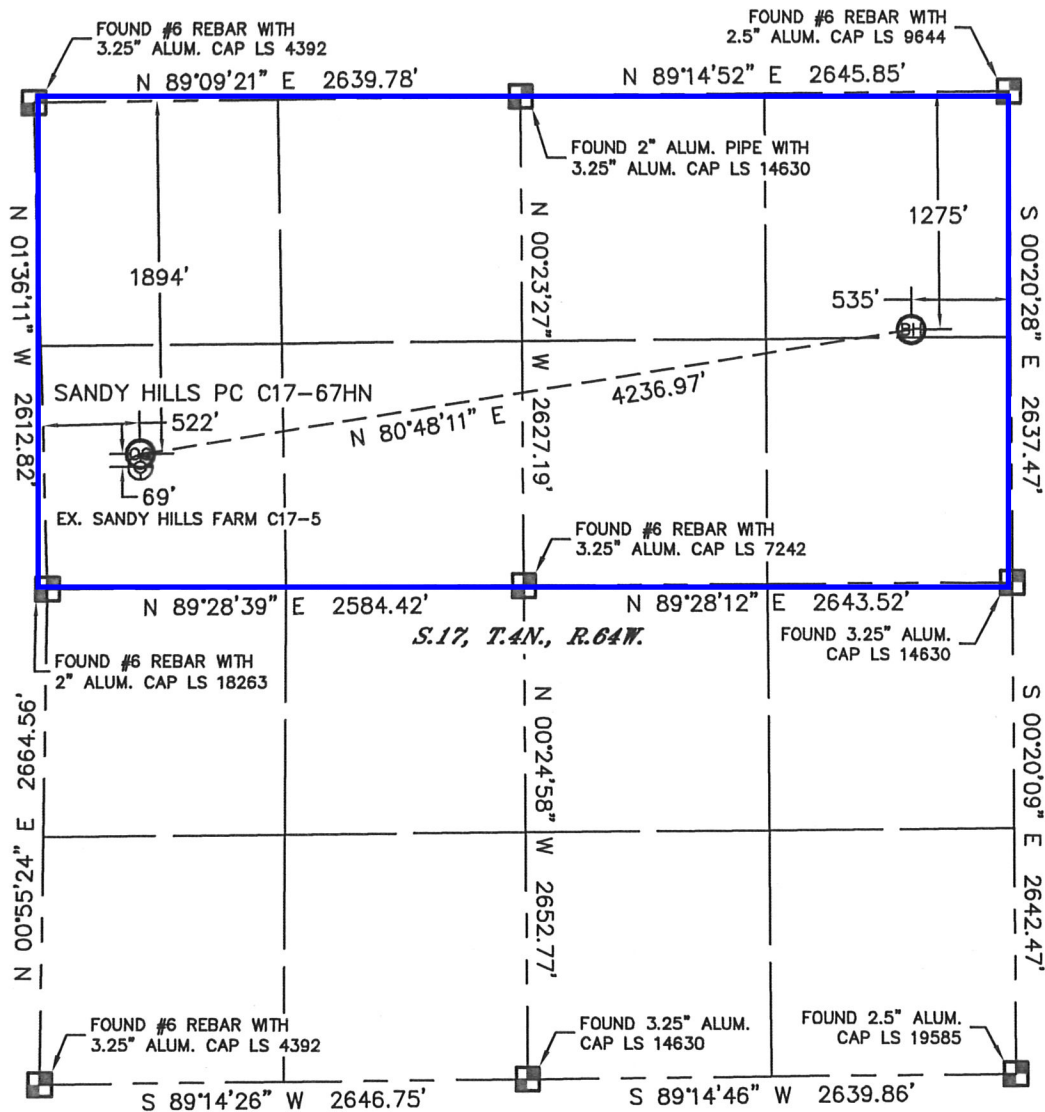
Bottom Hole Located N/2, Sec. 17, T4N, R64W

**The governmental ¼ Section has less than 8 bottom hole wells producing from the  
Codell, Niobrara, and J-Sand formations.**

# WELL LOCATION CERTIFICATE

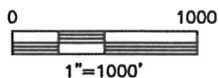
THIS MAP DOES NOT REPRESENT A BOUNDARY SURVEY

SECTION: 17  
TOWNSHIP: 4N  
RANGE: 64W



In accordance with a request from Erik Van Decar with Noble Energy Inc. Lat40°, Inc. has determined the surface location of the SANDY HILLS PC C17-67HN to be 1894' from the NORTH line and 522' from the WEST line and the bottom hole to be 1275' from the NORTH line and 535' from the EAST line as measured at right angles from the section lines of Section 17, Township 4 North, Range 64 West of the Sixth Principal Meridian, County of Weld, State of Colorado.

I hereby state that this Well Location Certificate was prepared by me, or under my direct supervision, that the fieldwork was completed on 6/2/11, for and on behalf of Noble Energy Inc. That this is not a Land Survey Plat or an Improvement Survey Plat, and that it is not to be relied upon for establishment of fence, building, or other future improvement lines.



**NOTE:**

- 1) Bearings shown are Grid Bearings of the Colorado State Plane Coordinate System, North Zone, North American Datum 1983/2007. The lineal dimensions as contained herein are based upon the "U.S. Survey Foot."
- 2) Ground elevations are based on an observed GPS elevation (NAVD 1988 DATUM).
- 3) NEAREST EXISTING WELL: SANDY HILLS FARM C17-5, 69'
- 4) IMPROVEMENTS: See LOCATION DRAWING for all visible improvements within 400' of disturbed area.
- 5) SURFACE USE: RANGELAND
- 6) INSTRUMENT OPERATOR: ADAM KELLY

**SURFACE LOCATION**  
LATITUDE: 40.31443°N  
LONGITUDE: 104.58202°W  
PDOP: 1.9  
ELEV: 4748'  
1/4, 1/4: SW1/4NW1/4  
NEAREST PROPERTY LINE: 522' WEST

**BOTTOM HOLE**  
LATITUDE: 40.31617°N  
LONGITUDE: 104.56700°W

**NOTE**

According to Colorado law, you must commence any legal action based upon any defect in this W.L.C. within three years after you discover such defect. In no event, may any action based upon any defect in this survey be commenced more than ten years after the date of the certificate shown hereon. (13-80-105 C.R.S.)

## LEGEND

- = ALIQUOT MONUMENT AS DESCRIBED
- = CALCULATED POSITION



Brian T. Brinkman—On behalf of Lat40°, Inc.  
Colorado Licensed Professional  
Land Surveyor No. 38175

PROJECT#: 2011016