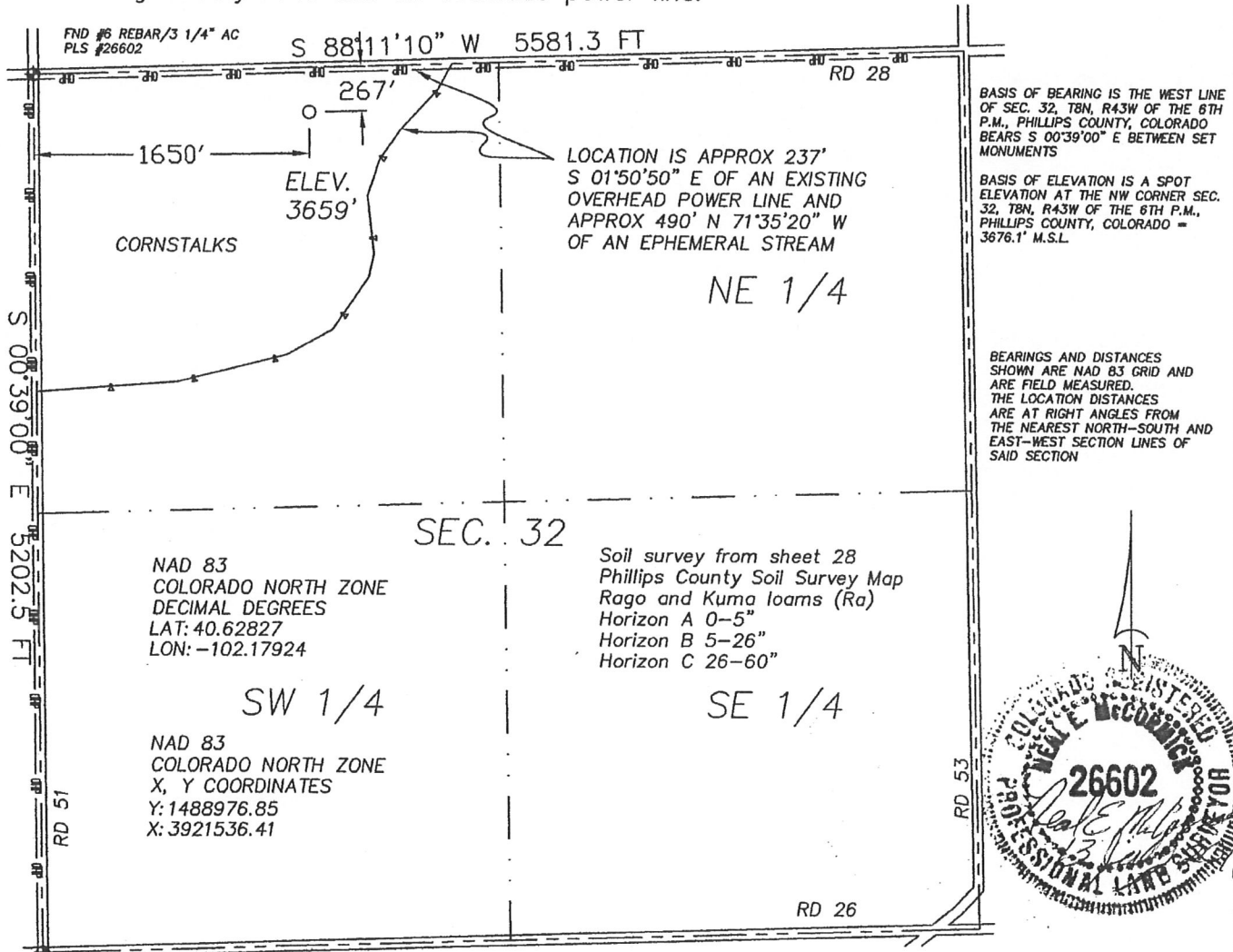


The accompanying plat is an accurate representation showing the location of a proposed well. This location may be described as a point 267 feet South of the North line, and 1650 feet East of the West line of Section 32 Township 8 North, Range 43 West of the 6th P.M., Phillips County, Colorado. The surface elevation at this point is 3659 feet m.s.l.

Note: This is not a land survey plat.

There are no visible improvements within 400 feet of the location, except an existing county road and an overhead power line.



BASIS OF BEARING IS THE WEST LINE OF SEC. 32, T8N, R43W OF THE 6TH P.M., PHILLIPS COUNTY, COLORADO BEARS S 00°39'00" E BETWEEN SET MONUMENTS

BASIS OF ELEVATION IS A SPOT ELEVATION AT THE NW CORNER SEC. 32, T8N, R43W OF THE 6TH P.M., PHILLIPS COUNTY, COLORADO = 3676.1' M.S.L.

BEARINGS AND DISTANCES SHOWN ARE NAD 83 GRID AND ARE FIELD MEASURED. THE LOCATION DISTANCES ARE AT RIGHT ANGLES FROM THE NEAREST NORTH-SOUTH AND EAST-WEST SECTION LINES OF SAID SECTION

3.958 PDOP

GPS OPERATOR: NEAL MCCORMICK

☀ Dual Producer

○ Location

==== Road

● Oil well

- x - Fence Line

== Trail

☀ Gas Well

- . - Half-Sec. Line

◆ Survey Monument

⊙ Dry Hole

--- Section Line



GREAT PLAINS  
SURVEYING, INC.

DATE OF FIELD WORK:

10 JUNE 2011

DATE OF DRAWING:

13 JULY 2011

RAFERT 843-32-21

NE 1/4 NW 1/4 SEC. 32, T8N, R43W

BLACK RAVEN ENERGY, INC.

PHILLIPS COUNTY, COLORADO

20575 C.R. 21 Phone 970-774-3602  
Haxtun, CO 80731 Fax 970-774-3601

W328N43GPS

9402-235