

CONSTRUCTION LAYOUT DRAWING

1 of 2

VEGETATION:
PASTURE

SURFACE USE:
GRAZING

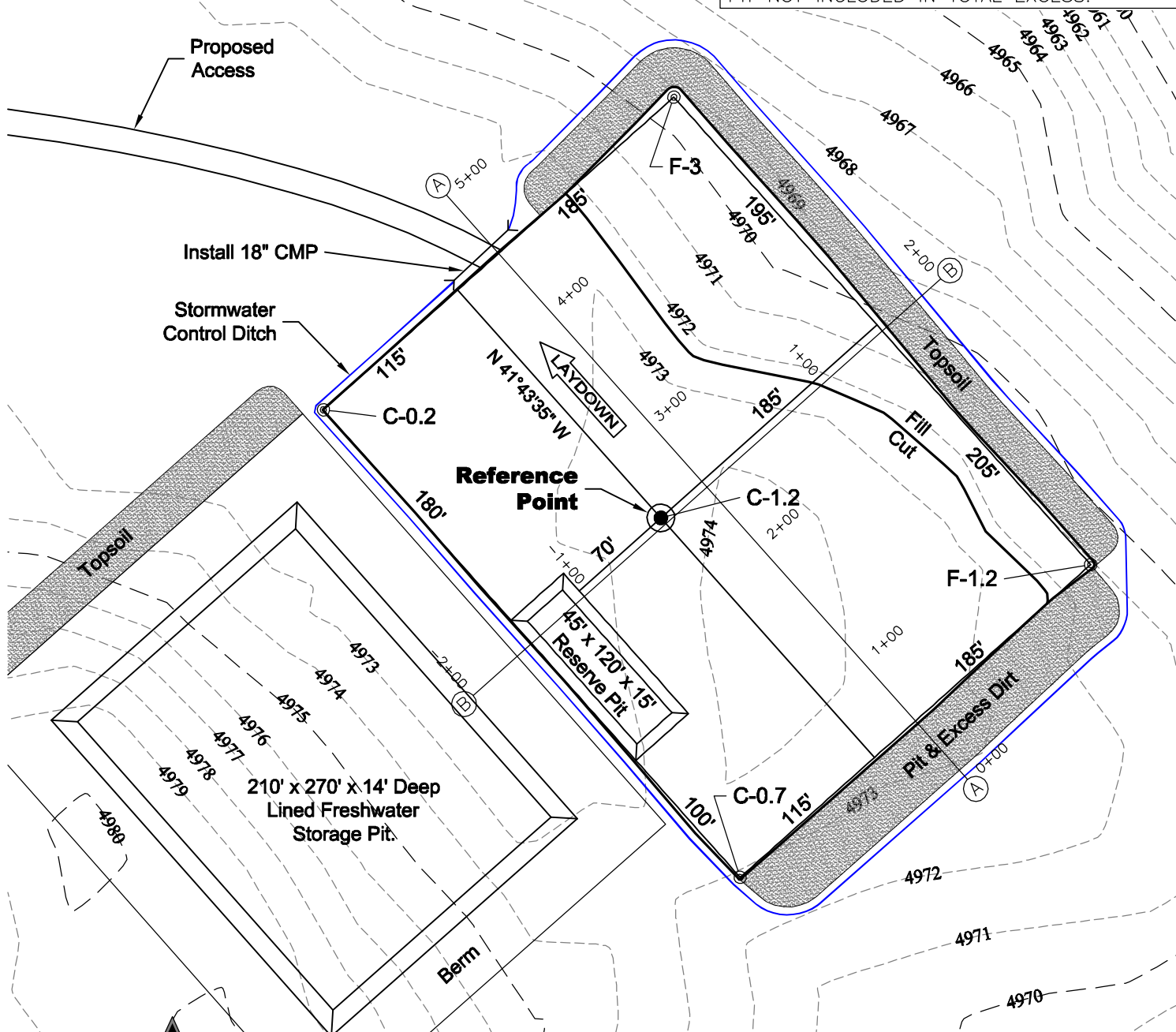
PAD 300'X400' ELEV= 4972.3

DISTURBED AREA=4.0± ACRES

ESTIMATED DIRT QUANTITIES

CUTx10%	FILL	PIT	TOPSOIL	EXCESS
3,630	1,150	2,590	2,270	210

NOTE: VOLUMES IN CUBIC YARDS. TOPSOIL INCLUDED IN VOLUMES AT A DEPTH OF 6". PIT NOT INCLUDED IN TOTAL EXCESS.



NOTE:
10% ALLOWANCE IS MADE FOR SOIL EXPANSION.

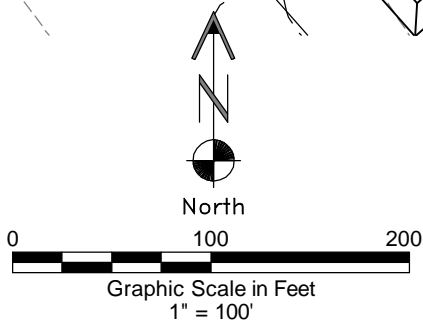
8/18/11

GEO SURV

LAND SURVEYING AND MAPPING
LAFAYETTE - WINTER PARK
Ph 303 666 0379 Fx 303 665 6320

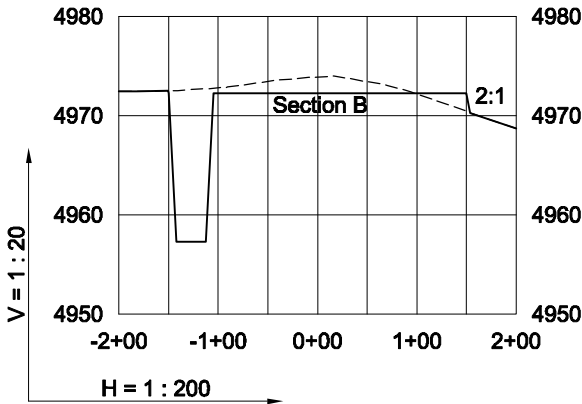
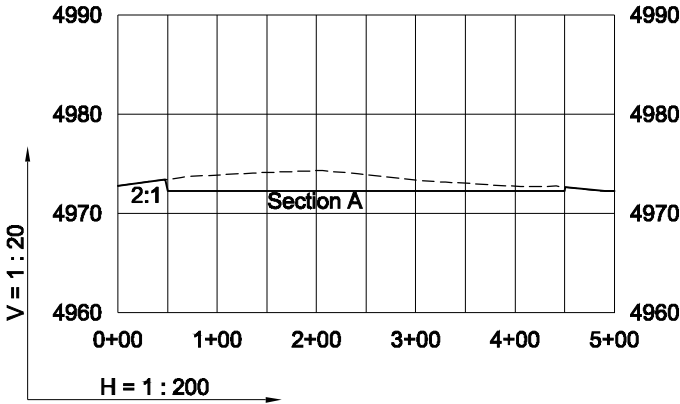
CARRIZO OIL & GAS, INC
BARRACUDA 20-14-7-60 PAD

SW1/4 SW1/4 SECTION 20 T7N R60W
6th PM WELD COUNTY COLORADO



CONSTRUCTION LAYOUT DRAWING

2 of 2



8/18/11

----- Existing Ground
----- Proposed Grade


LAND SURVEYING AND MAPPING
LAFAYETTE - WINTER PARK
Ph 303 666 0379 Fx 303 665 6320

CARRIZO OIL & GAS, INC
BARRACUDA 20-14-7-60 PAD

SW1/4 SW1/4 SECTION 20 T7N R60W
6th PM WELD COUNTY COLORADO

DWG: G:\GEO SURV\Weld\North\Carrizo 110004\Wellplate\Barracuda 20-14-7-60\F2A.dwg USER: MTC DATE: Aug 18, 2011 9:46am