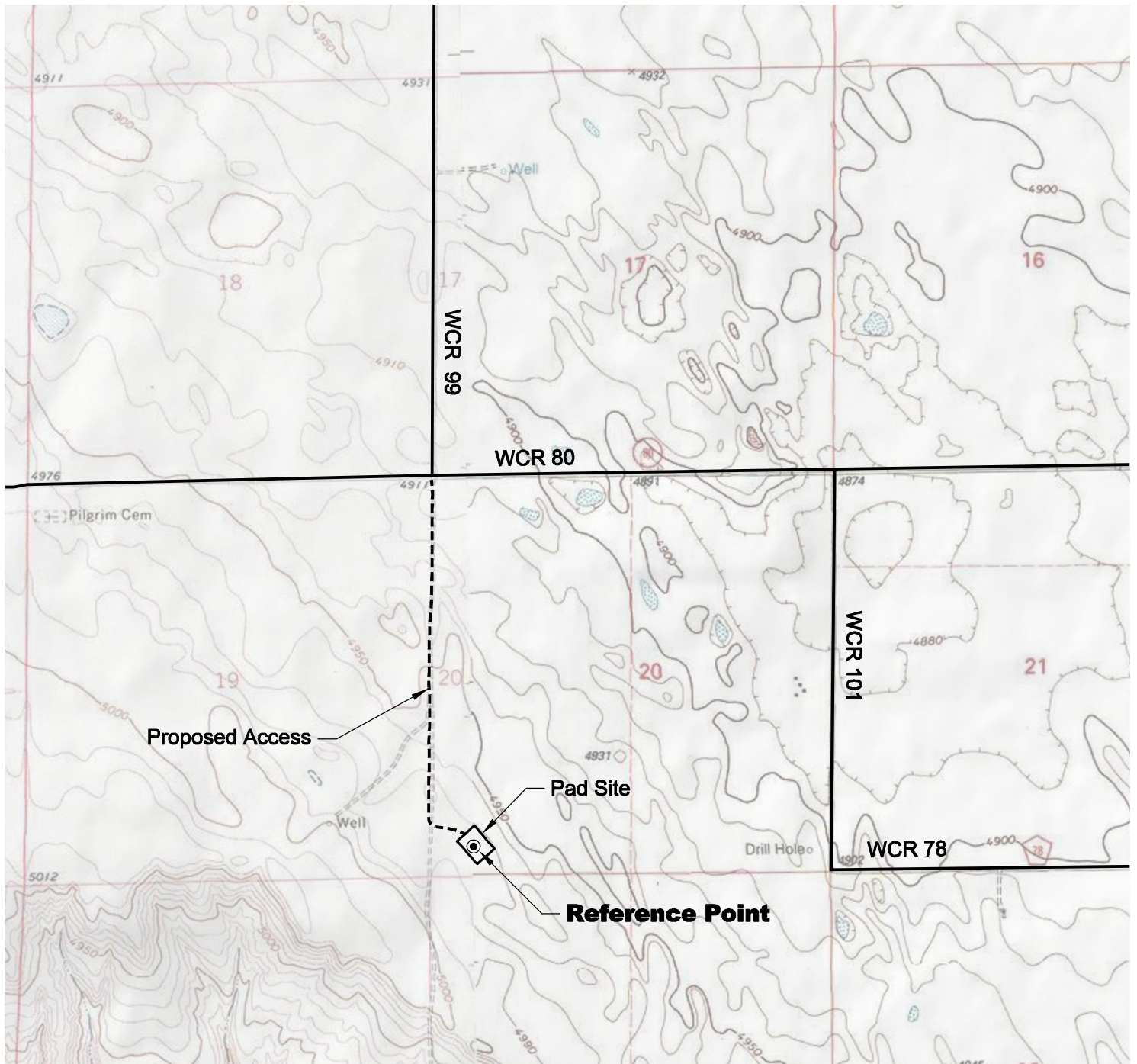


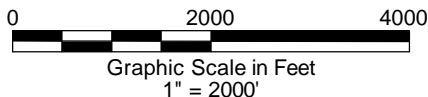
# ACCESS ROAD MAP



## DRIVING DIRECTIONS:

MP 0.0 - Intersection of Highway 14 & WCR 129 in Raymer;  
 East on Highway 14  
 MP 8.9 - Right of WCR 95  
 MP 10.9 - Left on WCR 86  
 MP 12.9 - Right on WCR 99  
 MP 15.9 - T Intersection with WCR 80; continue ahead (south) into acces  
 MP 16.9 - Barracuda 20-14-7-60 Pad

8/18/11



**GEO SURV**

LAND SURVEYING AND MAPPING  
 LAFAYETTE - WINTER PARK  
 Ph 303 666 0379 Fx 303 665 6320

**CARRIZO OIL & GAS, INC**  
 BARRACUDA 20-14-7-60 PAD

**SW1/4 SW1/4 SECTION 20 T7N R60W**  
**6th PM WELD COUNTY COLORADO**