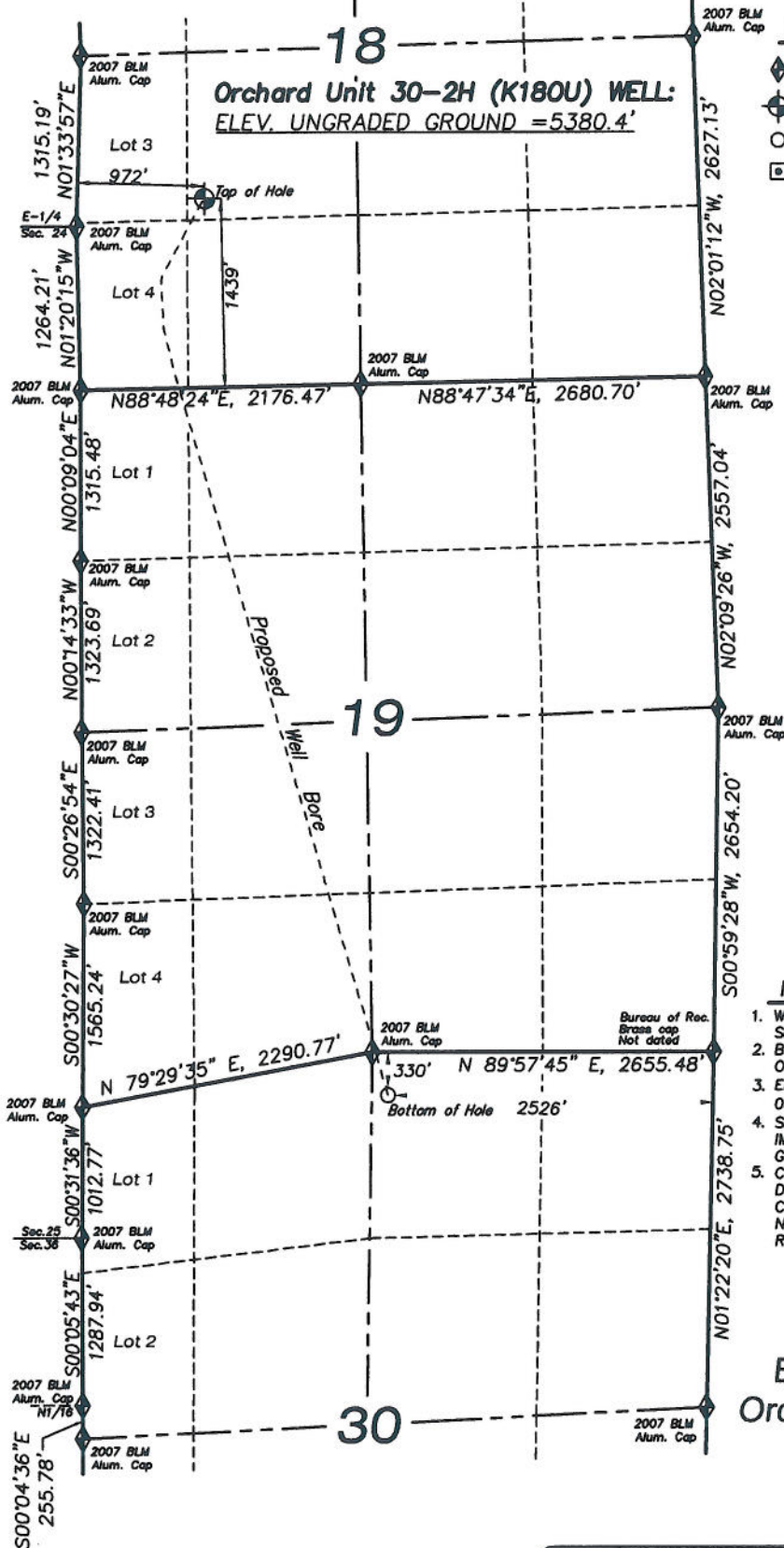


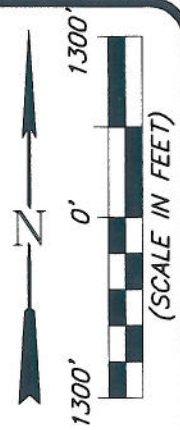
T8S, R96W, 6th P.M.



Orchard Unit 30-2H (K18OU) WELL:
ELEV. UNGRADED GROUND = 5380.4'

LEGEND

- ◆ SECTION CORNER LOCATED
- ⊕ SURFACE LOCATION
- BOTTOM HOLE LOCATION
- RECORD LOCATION OF CORNER



ORCHARD UNIT 30-2H (K18OU) WELL
(WELLHEAD LOCATION) NAD 83
LATITUDE = 39.346197° N
LONGITUDE = 108.155320° W
(BOTTOM HOLE LOCATION) NAD 83
LATITUDE = 39.327284° N
LONGITUDE = 108.150167° W

CERTIFICATE OF SURVEYOR

I, TED TAGGART OF FRUITA, COLORADO HEREBY CERTIFY THAT THIS MAP WAS MADE FROM NOTES TAKEN DURING AN ACTUAL SURVEY MADE BY ME OR UNDER MY DIRECTION FOR ENCANIA OIL & GAS (USA) INC. AND THAT THIS LOCATION HAS BEEN STAKED ON THE GROUND AS SHOWN HEREON.



NOTES

1. WELL FOOTAGES ARE MEASURED AT RIGHT ANGLES TO SECTION LINES.
2. BASIS OF BEARING: GEODETIC- BASED ON GPS OBSERVATIONS.
3. ELEVATIONS BASED ON GPS OBSERVATIONS, NAVD 88 (GEOID 03), POST PROCESSED USING NGS OPUS.
4. SEE ADDENDUM TO LEGAL PLAT (SHEET 1E) FOR VISIBLE IMPROVEMENTS WITHIN 400 FEET OF THE PROPOSED OIL & GAS LOCATION.
5. CONTROL FOR SURVEY WAS ESTABLISHED USING DIFFERENTIALLY CORRECTED GPS FROM AN OPUS BASED CONTROL NETWORK. WELL LOCATION WAS ESTABLISHED USING NON-GPS CONVENTIONAL METHODS, THEREFORE NO PDOP READING WAS TAKEN.

MAP to ACCOMPANY
APPLICATION for PERMIT to DRILL
EnCana Oil & Gas (USA) Inc.
Orchard Unit 30-2H (K18OU) Well

NE1/4 SW1/4, SECTION 18
T8S, R96W, 6th P.M.
MESA COUNTY, COLORADO



906 Main Street
Evanston, Wyoming 82930
Phone No. (307) 789-4545

Location Plat		Scale: 1" = 1300'	SHEET 1d OF 10
Project No.	10-04-32	Date Surveyed: 6/03/10	
Date Drawn:	6/21/11	Latest Revision Date:	