



Baker Atlas

RESERVOIR
PERFORMANCE
MONITOR

File No:

Company

MARATHON OIL COMPANY

1715

Well

697-12A-21

API No:

Field

GRAND VALLEY

06-045-15036-00

County

GARFIELD

State

COLORADO

Location

SRL: 1481' RIL & 1064' FEL

Other Services

3.761" GAUGE

BOND

DRL

SEC 12

TWP 6S

RGE 97W

G.L.

Elevation

8300 ft

K.B.

22 ft

Above P. D.

Permanent Datum

Log Measured From

Drill Measured From

KELLY BUSHING

Elevations

KB 8322 ft

DF 8321 ft

GL 8300 ft

Date 06-JAN-2008

Run ONE

Service Order 647482

Depth Driller 9960 ft

Depth Logger 9926 ft

Bottom Logged Interval 9826 ft

Top Logged Interval 6400 ft

Time Started 09:30

Time Finished 16:30

Operator Rig Time 7 HRS

Type of Fluid in Hole WATER

Fluid Density N/A

Salinity N/A

Fluid Level FULL

Logged Cement Top 2340 ft

Wellhead Pressure 0 psi

Maximum Hole Deviation N/A

Nominal Logging Speed 10 fpm

Maximum Recorded Temperature N/A

Reference Log 8-JAN-08

Equipment No. 8054

Recorded By TIM KAUTT

Witnessed By MR. BRUCE KELSCH

- FOLD HERE

In making interpretations of logs, our employees will give the customer the benefit of their best judgement. But since all interpretations are opinions based on inferences from electrical or other measurements, we cannot, and we do not guarantee the accuracy or correctness of any interpretation. We shall not be liable or responsible for any loss, cost, damages, or expenses whatsoever incurred or sustained by the customer resulting from any interpretation made by any of our employees.

Borehole Record

Bit Size	From	To
8.75 in		

Casing Record

Size	Weight	Grade	From	To
4.5 in	11.6 lbm/ft	P-110	SURFACE	9850 ft

Remarks

THE CREW OF B064 THANKS YOU.

Equipment Data

Run	Trip	Tool	Series Number	Serial Number	Position
1	1	RPM	8261FA	1015B554	FREE
1	1	RPM	8261PA	10304814	FREE

1	1	RFM	B2B1EA	101701B	FREE
1	1	GAMMA RAY	B2B2XA	B55	FREE
1	1	CCL	B248EA	120493	FREE
1	1	PCM	B250EA	150702	FREE

MAIN SECTION IN PNC 3-D MODE

SPL PROCESSING

MEASUREMENT TYPE	PARAMETER	VALUE	UNITS	TOP	BOTTOM
PNC Porosity	Borehole	Cased		6407.514	9952.250
PNC Porosity	Borehole Size	8.750	inch	6407.514	9952.250
PNC Porosity	Casing Size	4.500	inch	6407.514	9952.250
PNC Porosity	Gas Filled	Non Gas Filled		6407.514	9952.250
PNC Porosity	Matrix	Sandstone		6407.514	9952.250

DEPTH OFFSETS (for Acquired Curves)

SERIES	DEPTH OFFSET	ACQUIRED CURVES					
B248EA	-15.470	FLTM					
B248EA	-13.470	OCL CHV					
B262XA	-10.189	GR					
B281XA	-0.662	HVC3Q0	SEQ3	AMA3	AML3	BKX	CXS
		CPT3Q0	CPT3Q2	CPT3Q3	CPT3Q4	ET3	IXS
		MCS3	MCS3Q0	QCAL3	RCN3	RICK	SDA3
		SDL3	SGA3	SGL3	STA3	XS	ASPEC3
		AMB3	AMF3	CHF3	IXSC	IXSN	RATQ23
		RICKC	RIN13C	RIN23	RIN23C	SD3D	SG3D
		SGB3	SGF3	WDTH3	CXSR	IXSR	XSR
		RICKR					
B281XA	-0.250	HVC2Q0	SEQ2	AMA2	AMB2	AMF2	AML2
		BKL	CHF2	CLS	CPT2Q0	CPT2Q2	CPT2Q3
		CPT2Q4	ET2	ILS	LS	MCS2	MCS2Q0
		QCAL2	RCN2	RICL	RONE23	RTW023	SDA2
		SDL2	SGA2	SGB2	SGF2	SGK2	SGL2
		STA2	WDTH2	CXSR	IXSR	WDTH2	SDA2

B281XA

D.000

CLSR	ILSR	LSR	RICLR		
CPRS	HVC1Q0	MY	SEQ	SEQ1	AMA1
AMB1	AME1	AMF1	AML1	BKS	CHF1
CSS	CORB	QORF	GPT1Q0	CPT1Q2	GPT1Q2A
GPT1Q2B	GPT1Q2C	GPT1Q3	GPT1Q4	GPT1Q5	ET1
G1	G2	GE1S	GE2S	ISS	MCS1
MCS1Q0	QA1	QCAL1	QM1	RAT0	RAT013
RBOR	RGN1	RICS	RIN	RONE	RPOR
RTW0	RIN13	RONE13	RTW013	SALB	SC1
SDA1	SDL1	SGA1	SGB1	SGBC	SGE1
SGF1	SGFC	SGK1	SGL1	SS	SS2
STA1	PD1S	PD2S	PD3S	MD1S	MD2S
MD3S	DG1S	DG2S	DG3S	PD1M	PD2M
PD3M	MD1M	MD2M	MD3M	DG1M	DG2M
DG3M	MVS	WA	MVM	FILV	IAM
TA	PVM	PVS	IAS	SSTAT	QPD1
QPD2	QPD3	QMD1	QMD2	QMD3	QDG1
QDG2	QDG3	QMA	QTA	QFILV	QMV
QPV	QIA	DERR	DCNT	QPK1	QSA1
PKS1	ASPEC1	HOC	FE2XC	ISSC	RINC
ISSN	RDEN	WIDTH1	RICSC	CSSR	G1R
G2R	ISSR	SSR	SS2R	RATOR	RAT013R
RBORR	RICSR	RINR	RIN13R	RONER	RPORR
RTWOR					
SYSTEM	D.000	TEN	TTEN		

Created by : RPM9, v5.0.0.0

Plotted by : PlotMgr, v5.4.504

Company : MARATHON OIL COMPANY

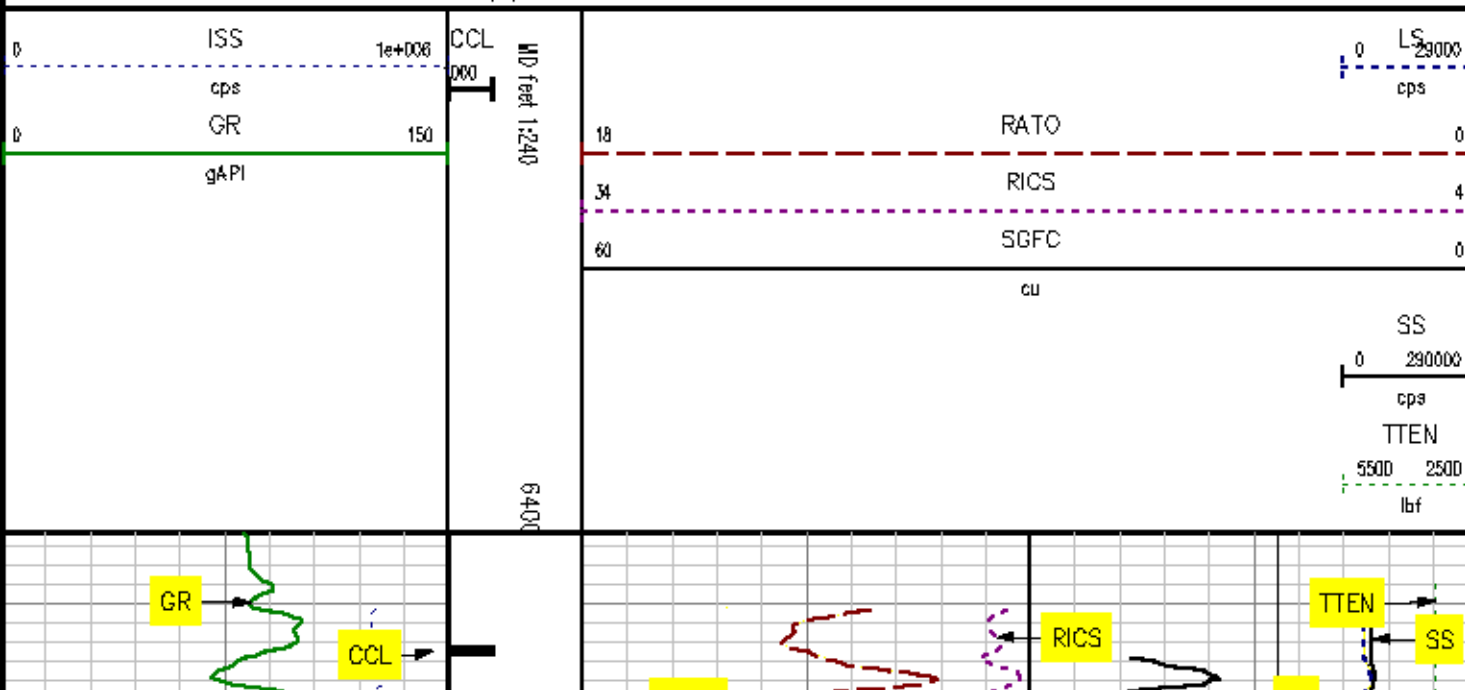
Well : 697-12A-21

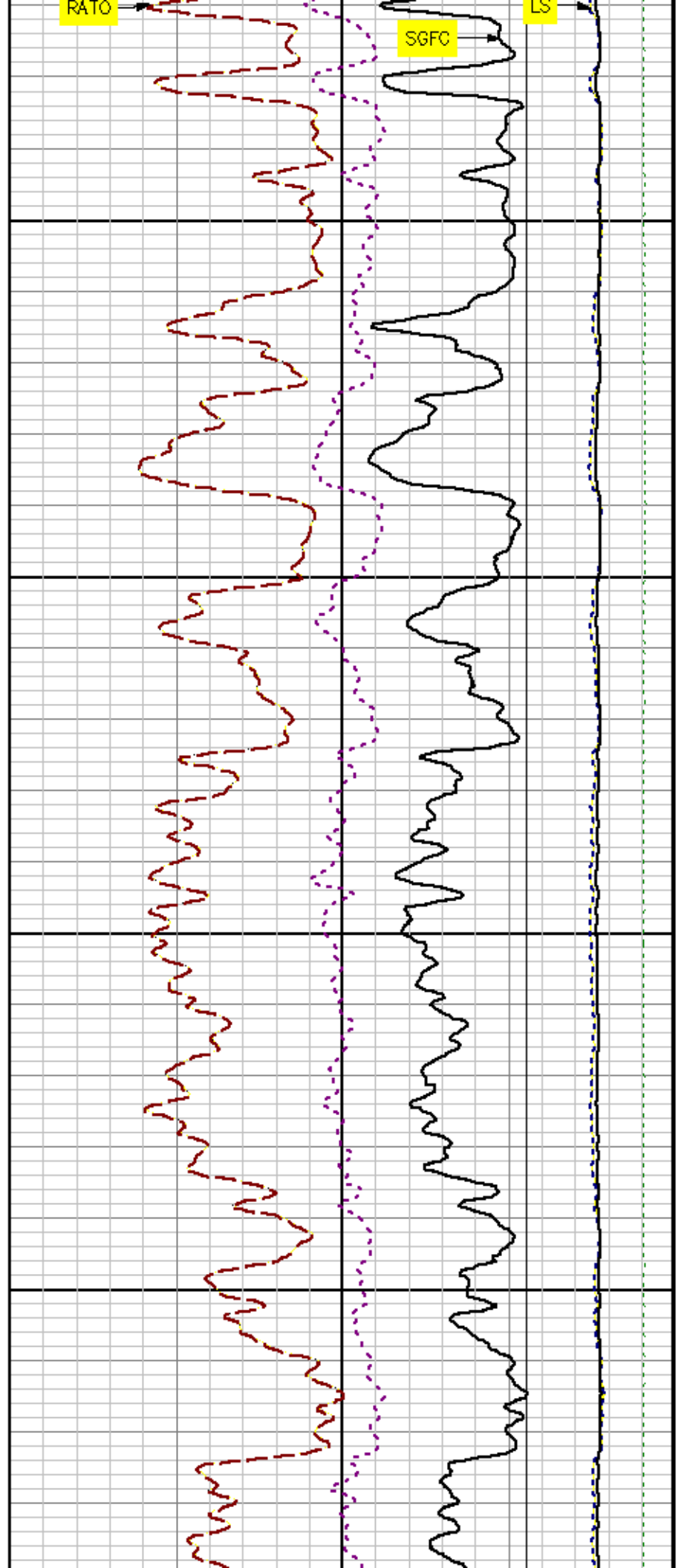
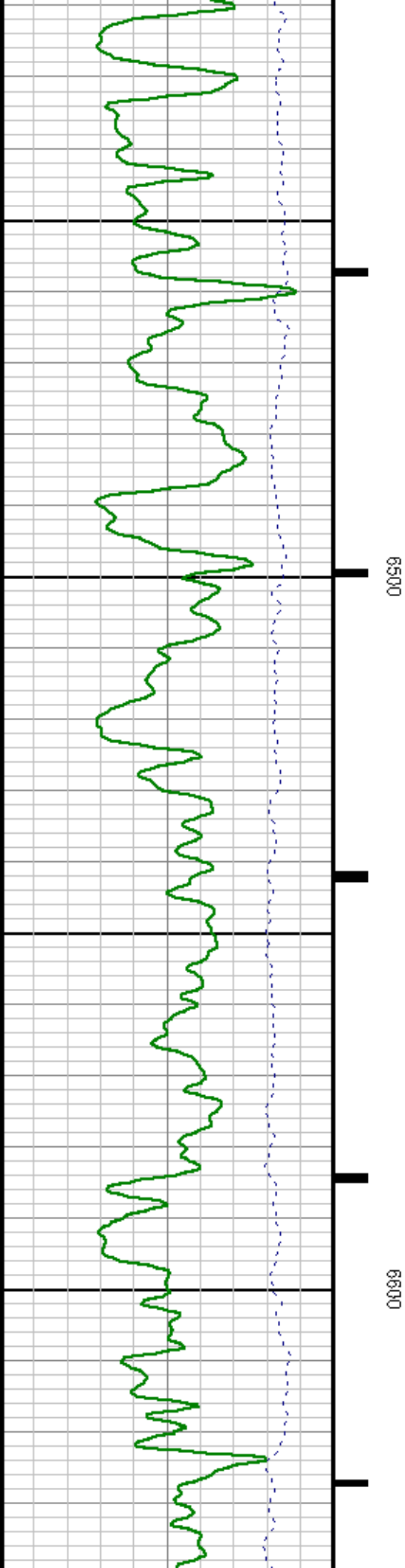
File Name : D:\WELLDATA\21RPM\MAIN.XTF

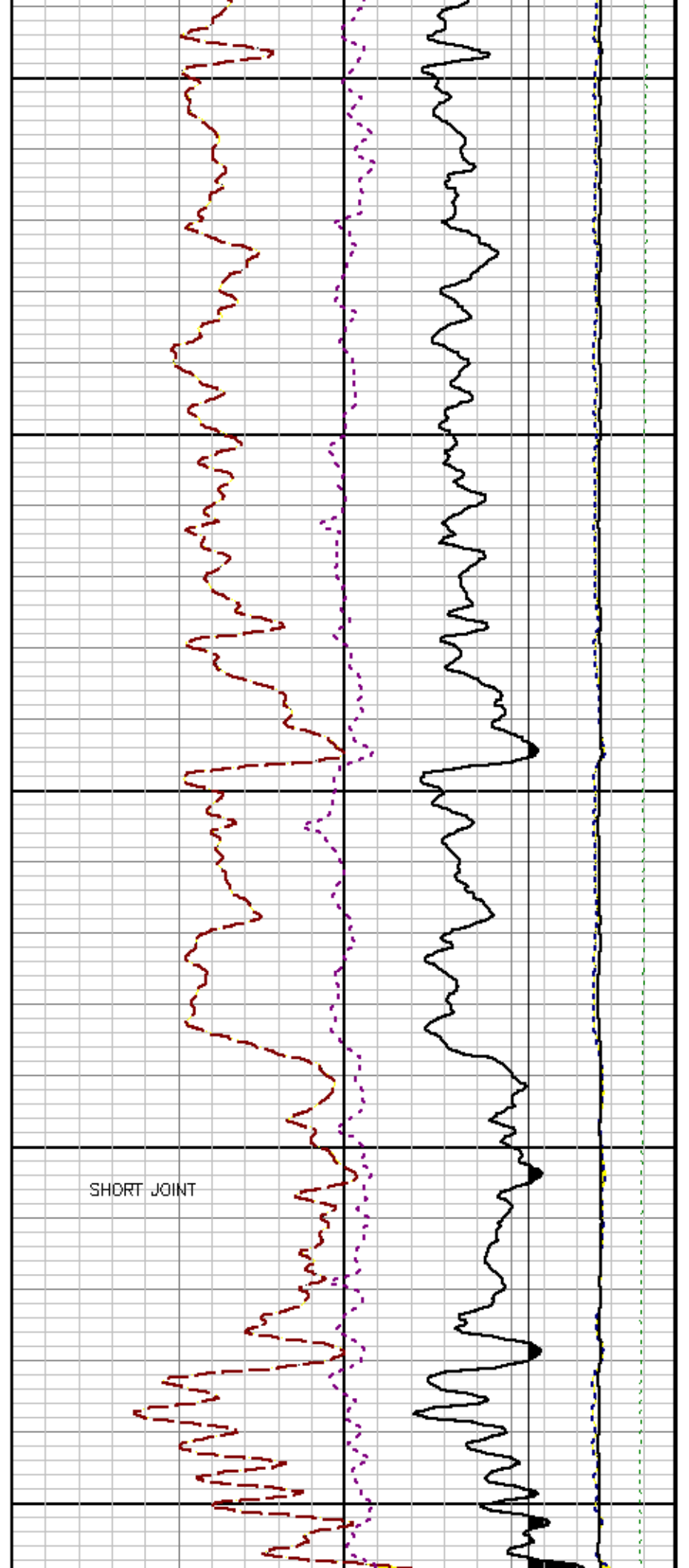
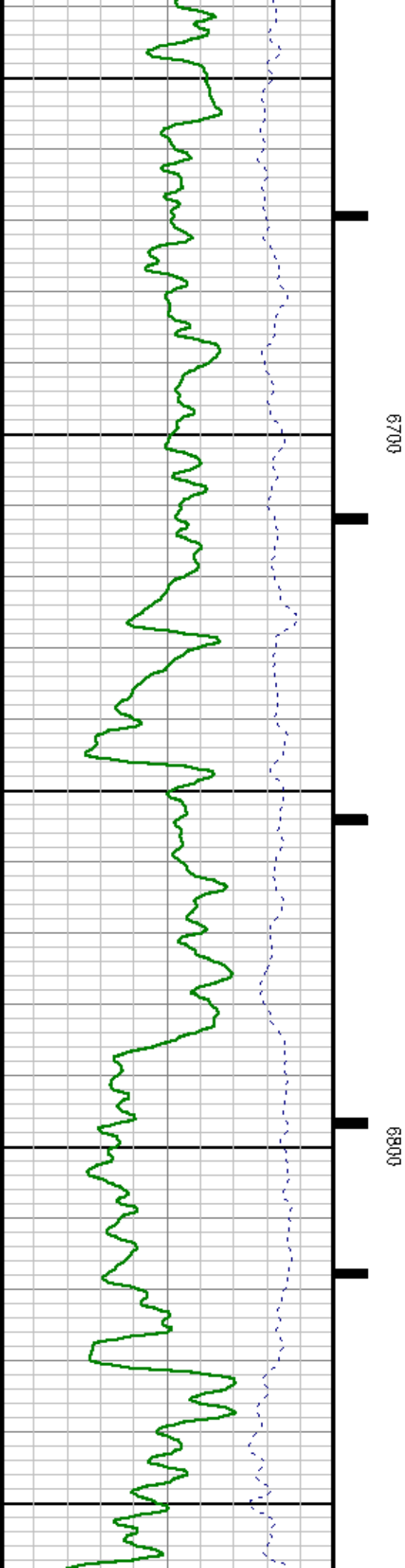
Mode : PlotMgr 5.4.504

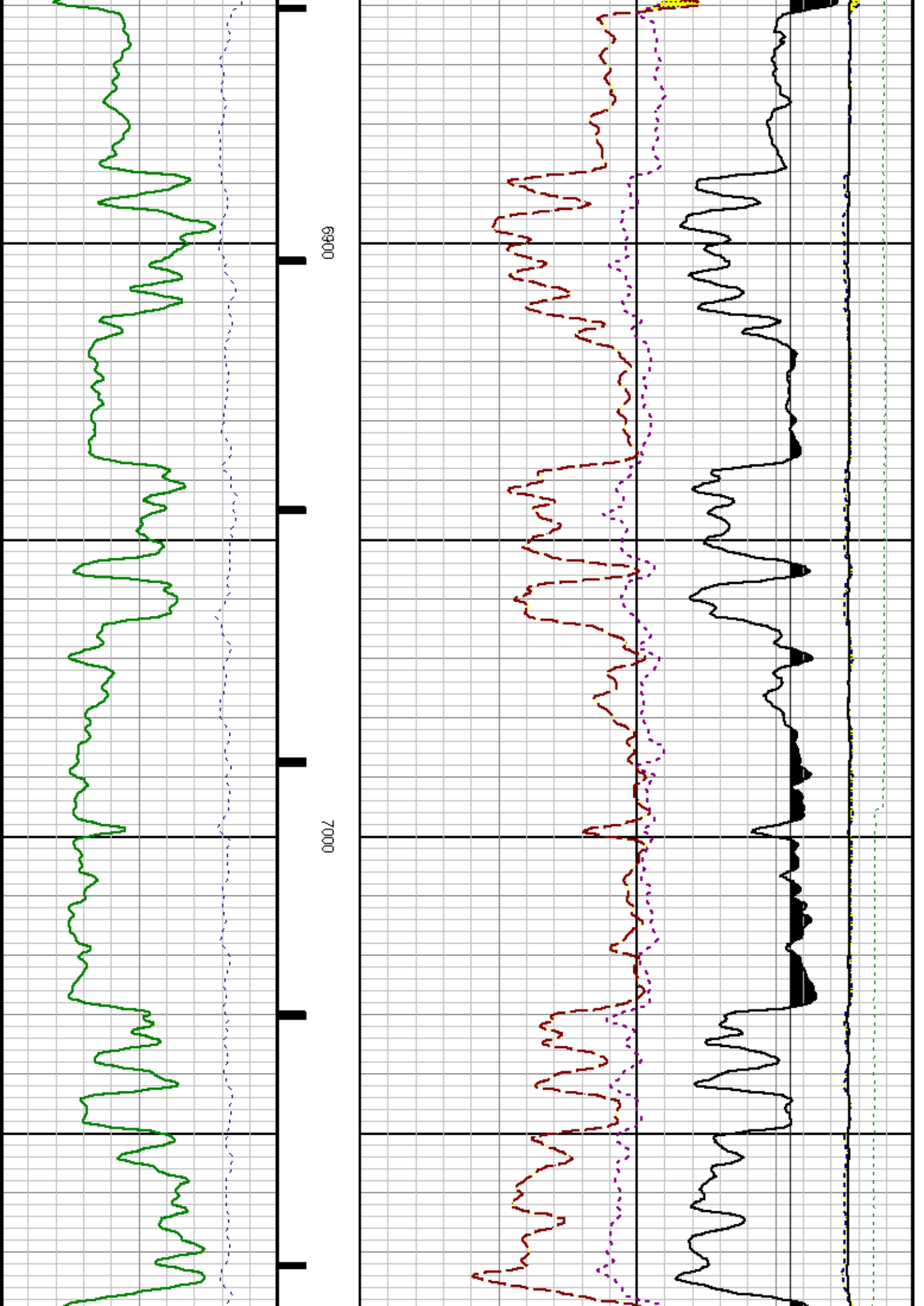
Interval : 6402.50 - 9952.50 feet UP

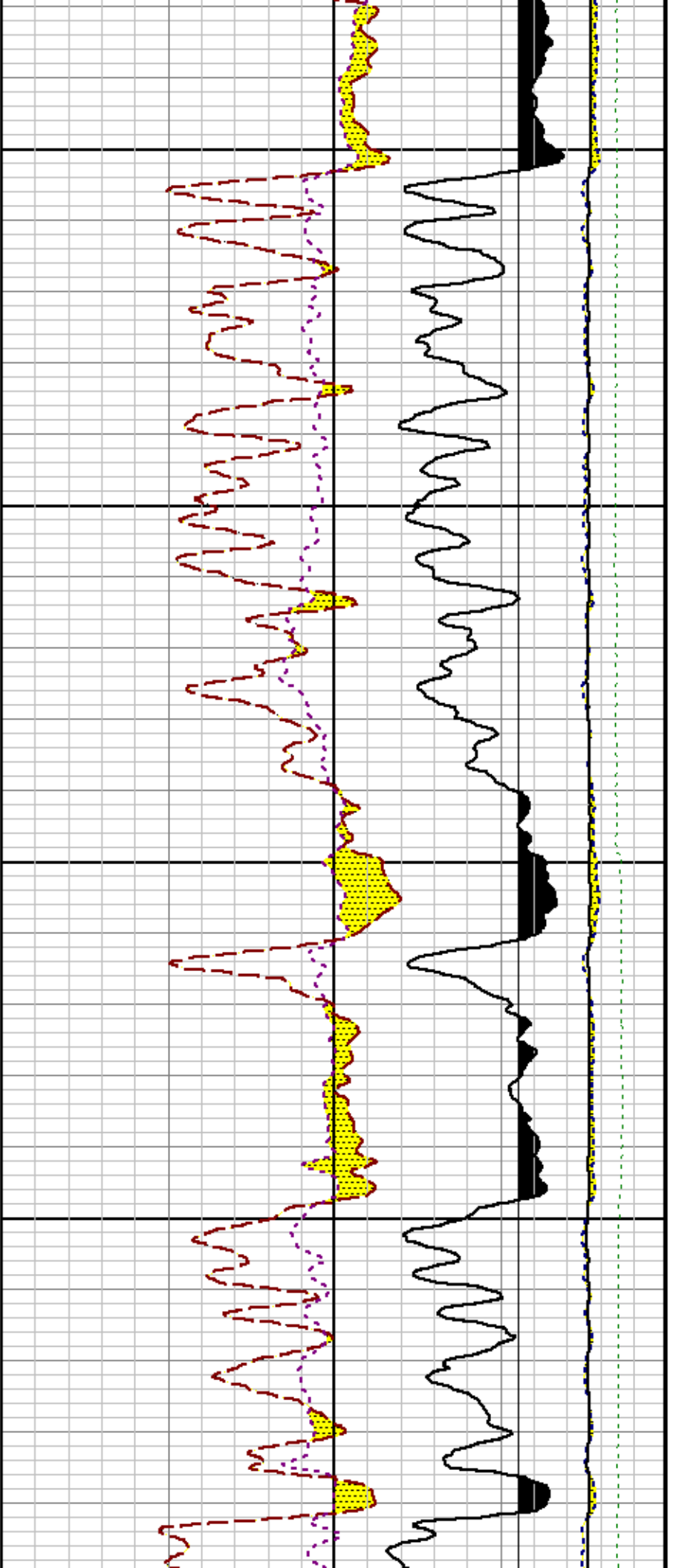
Created : 1/8/2009 12:16:49 PM







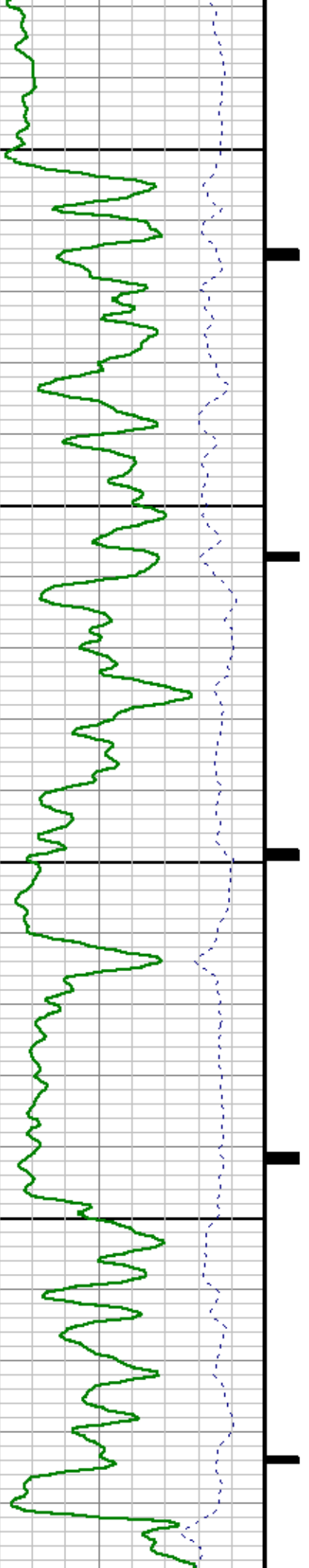


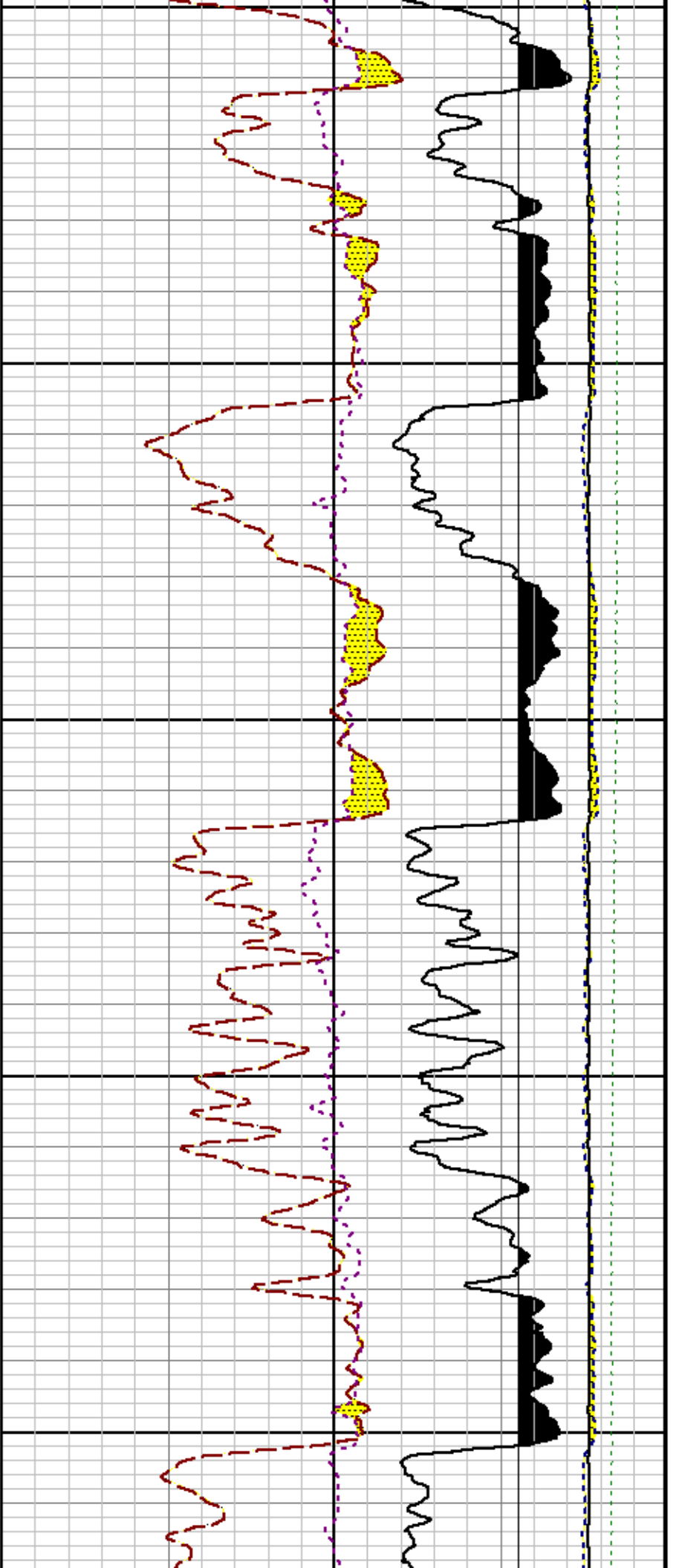


7100

7200

7300

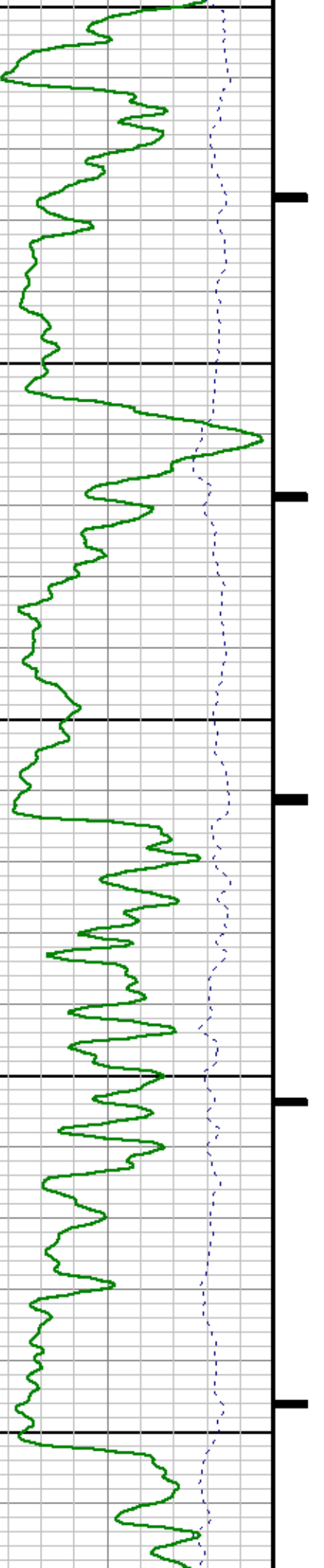


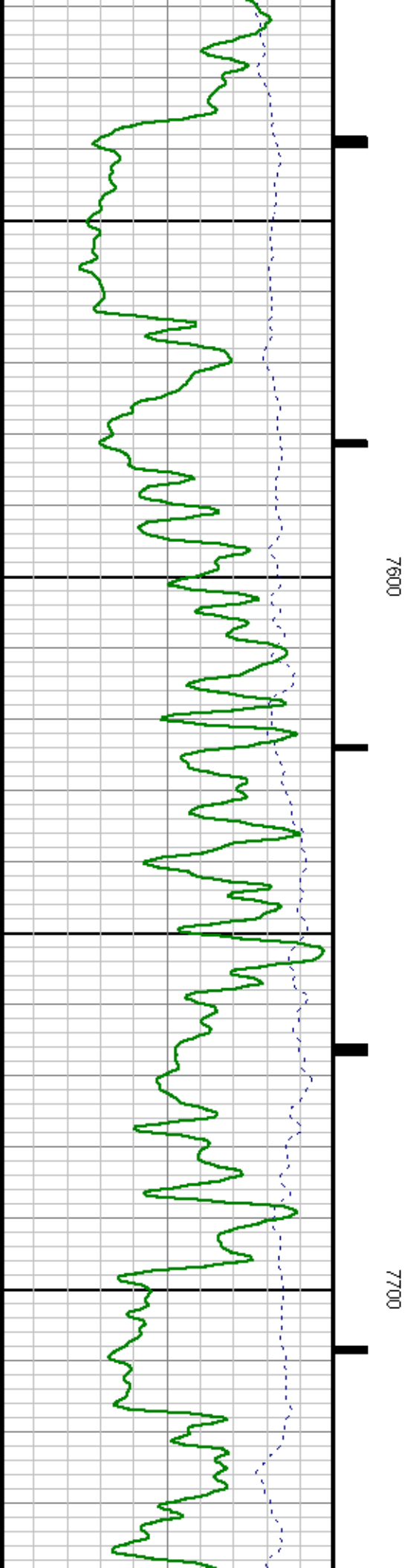
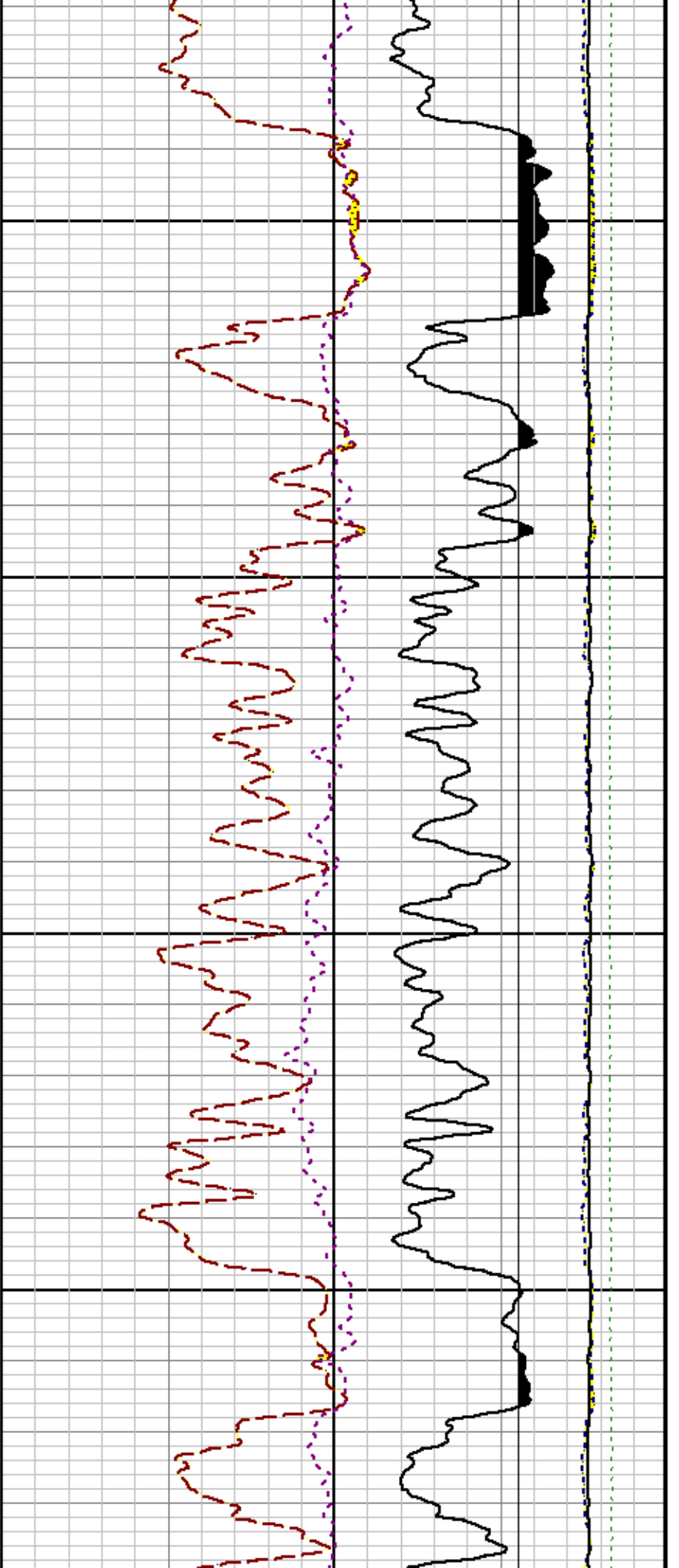


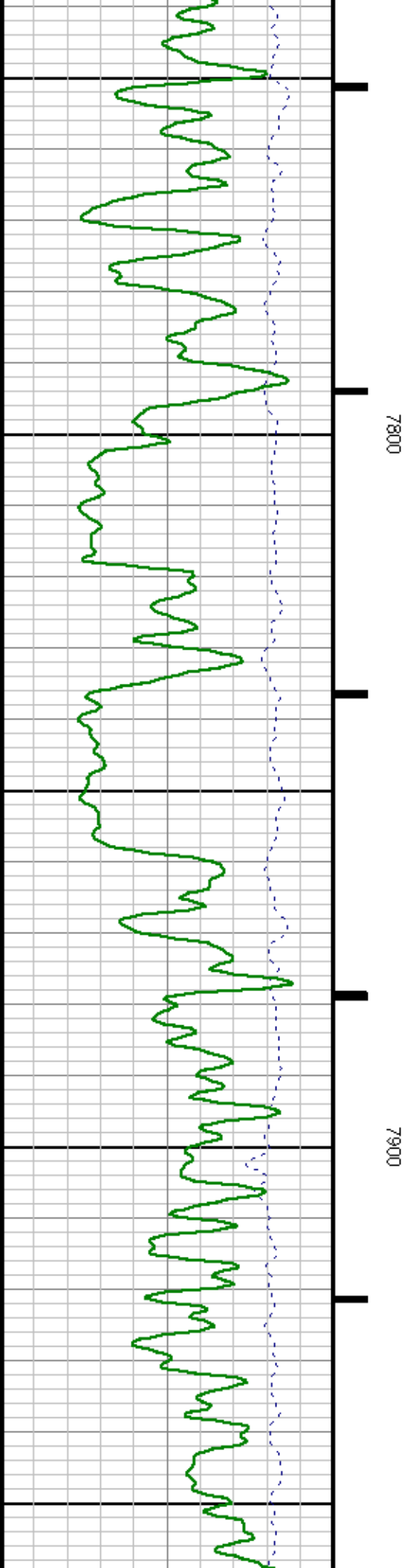
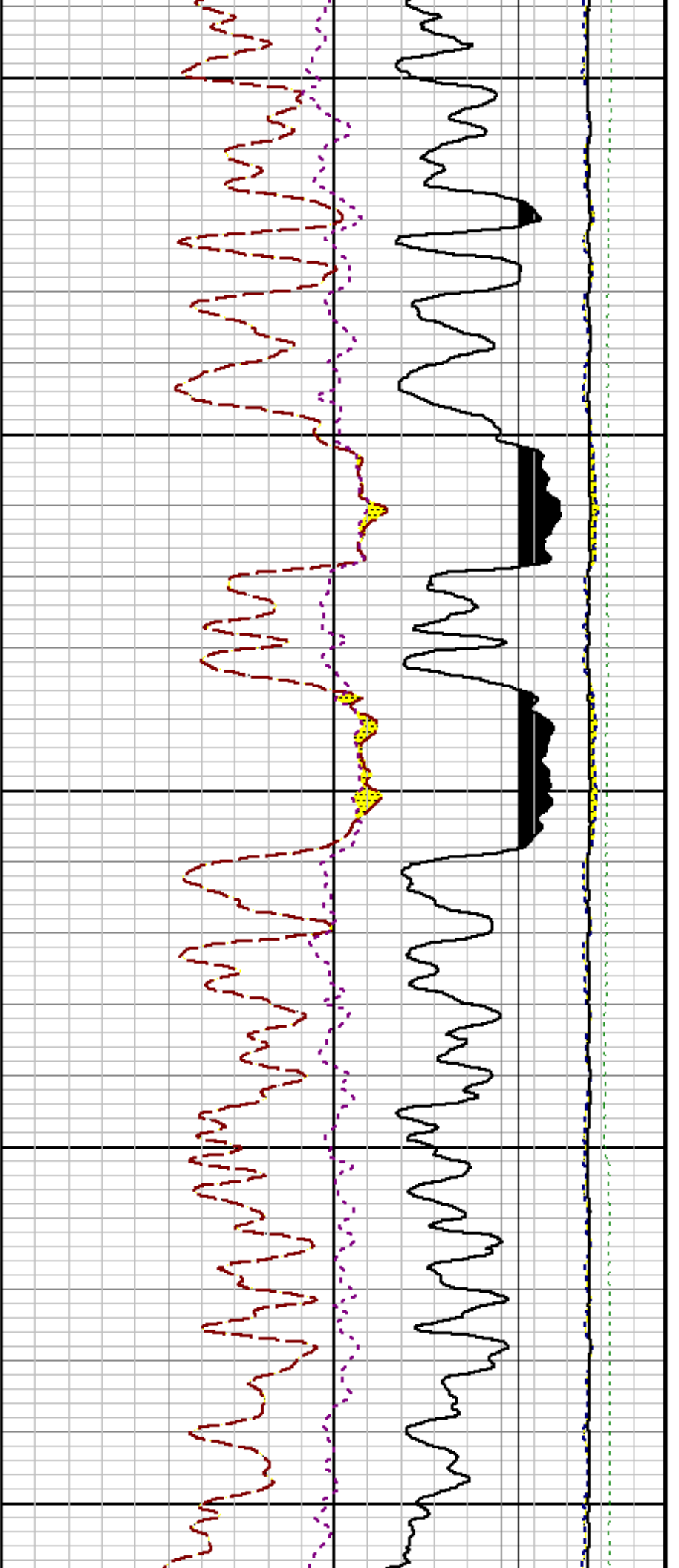
500

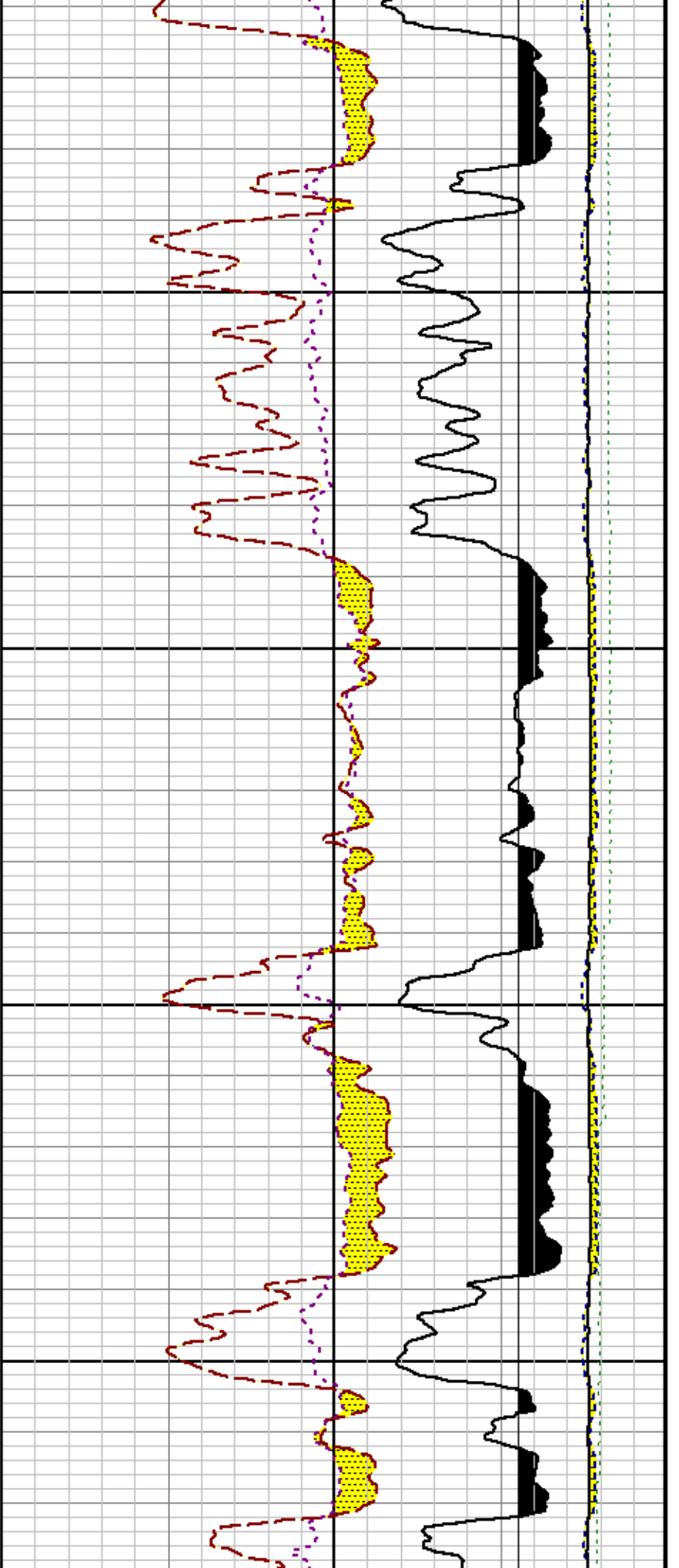
7400

7500



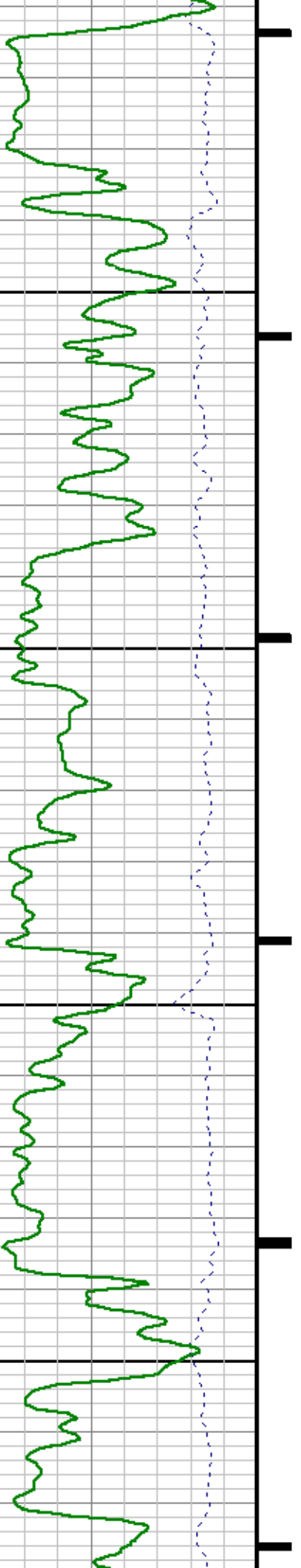


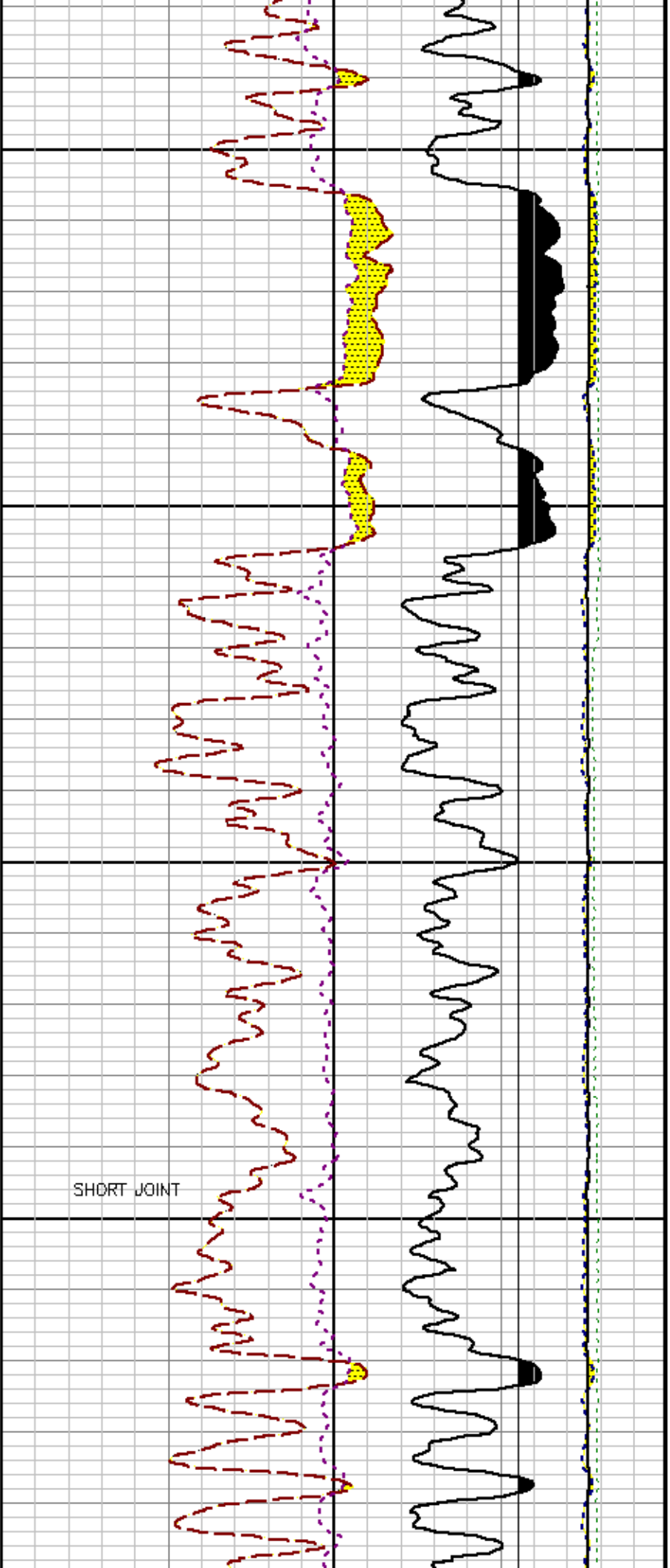




8000

8100

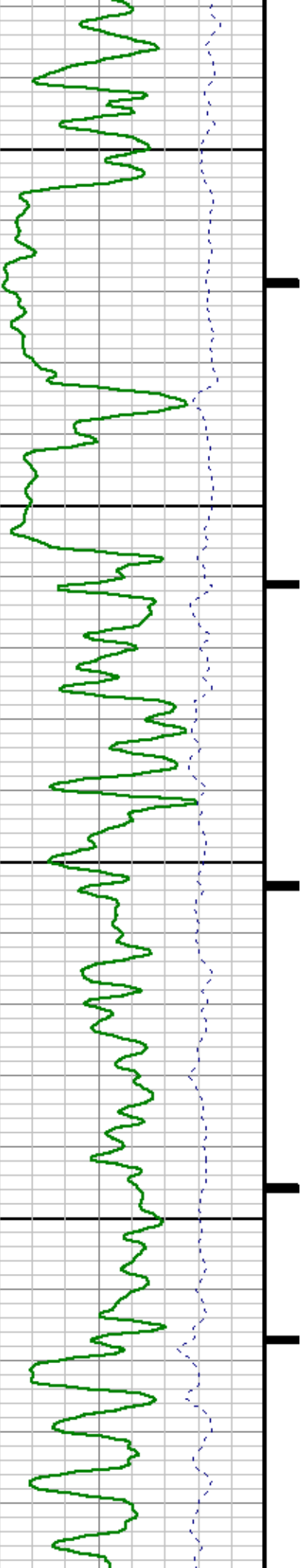




8200

8300

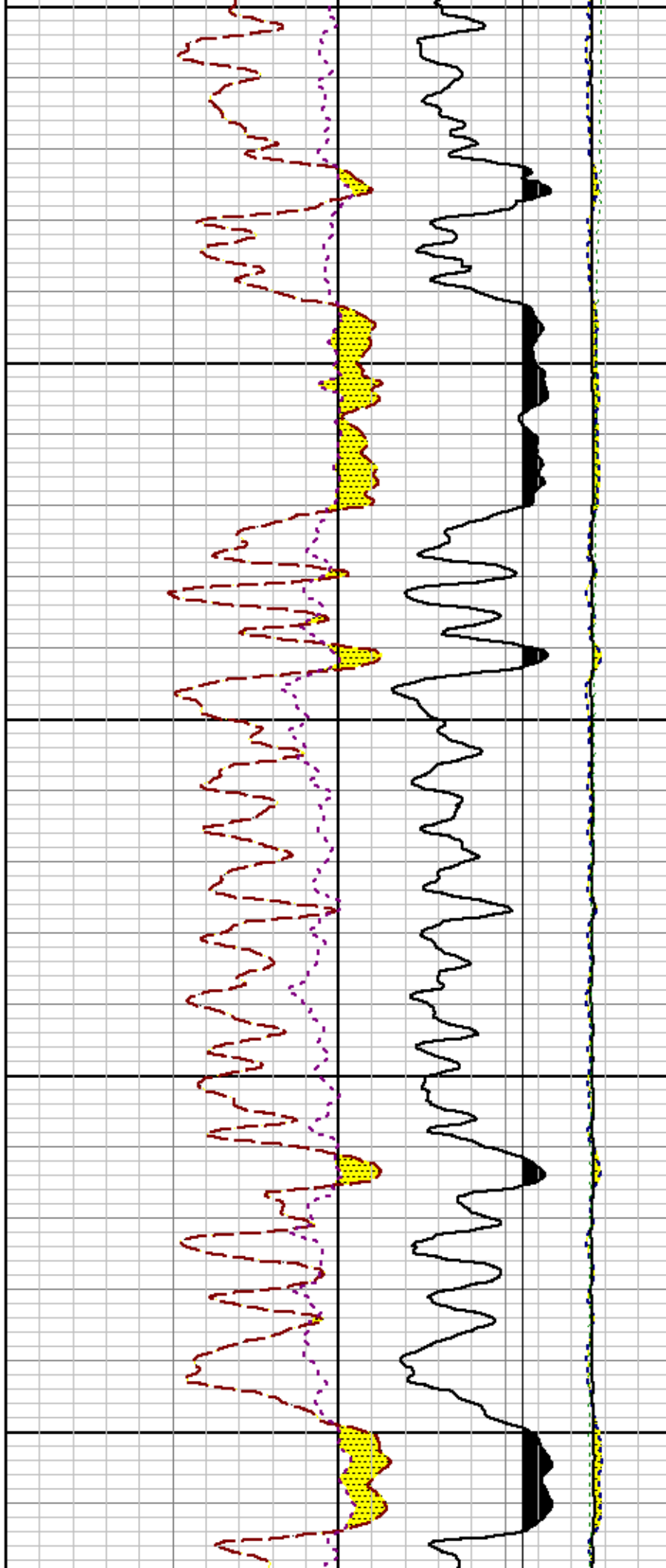
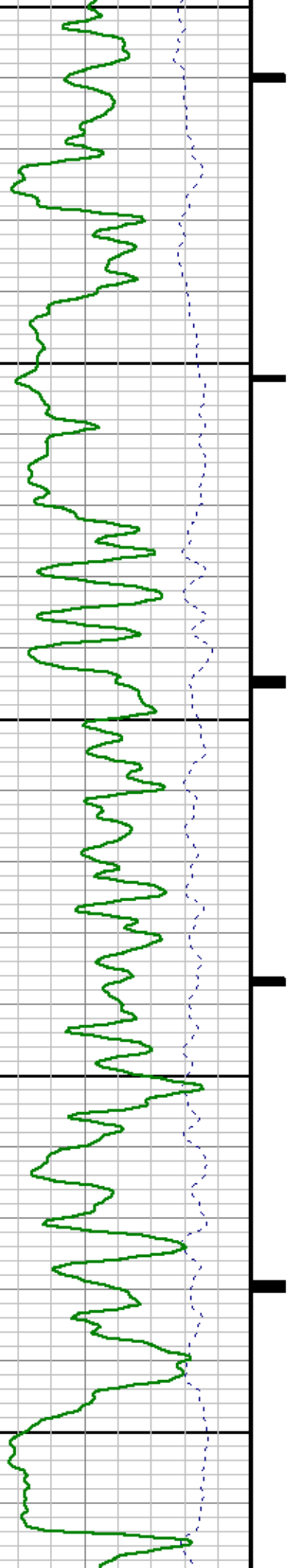
8400

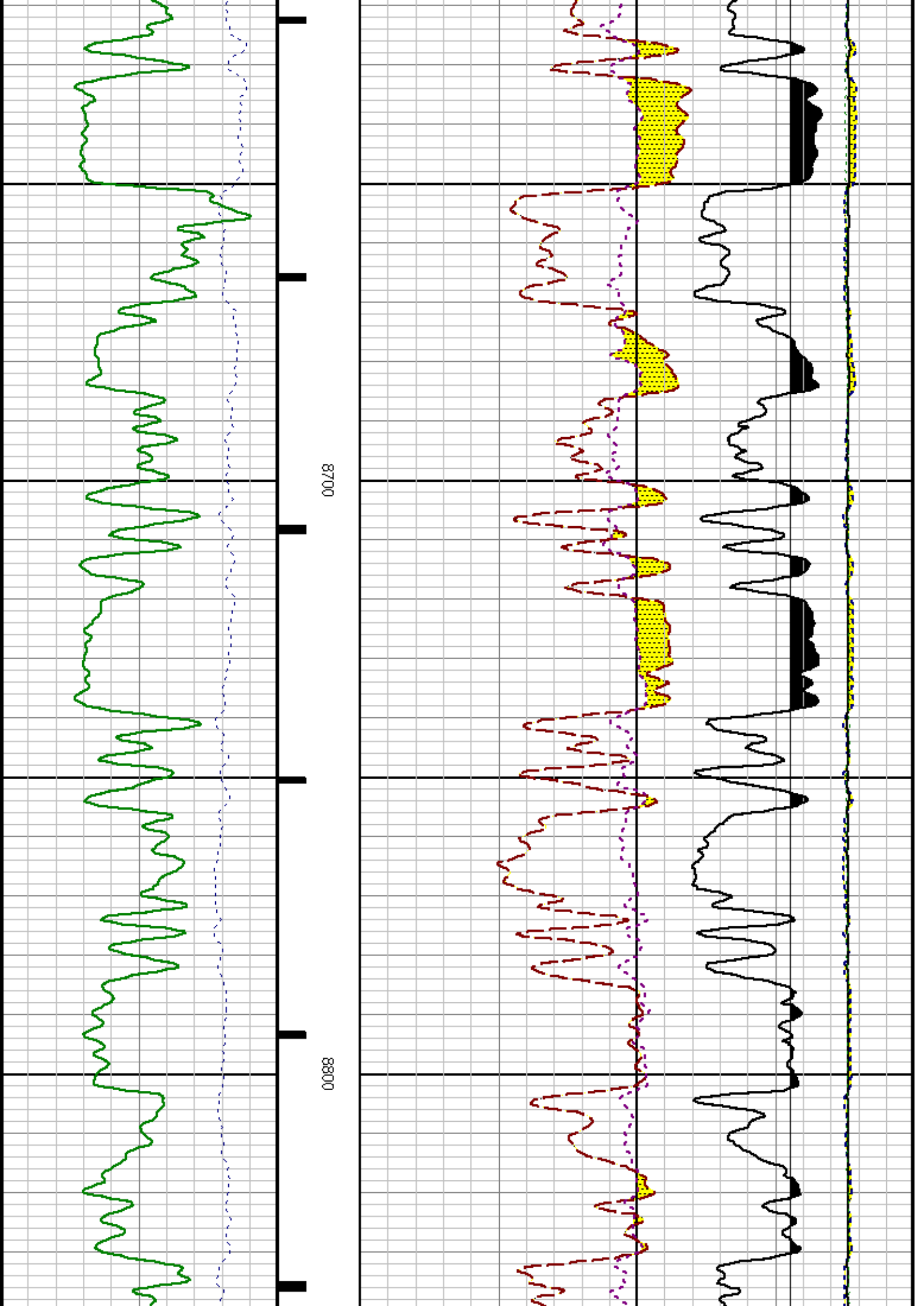


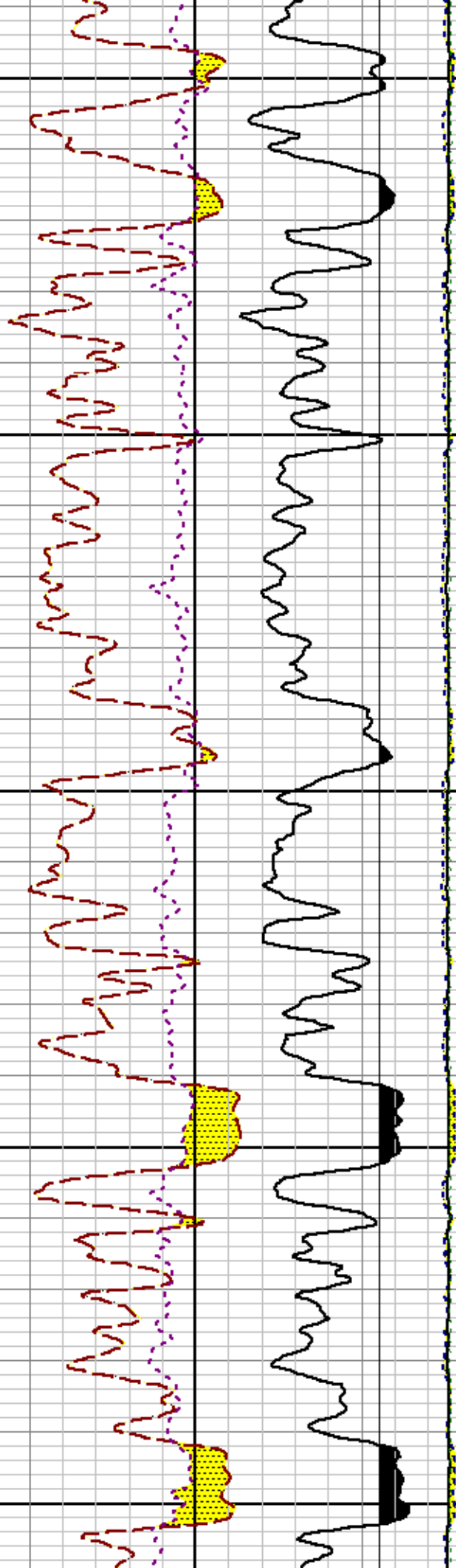
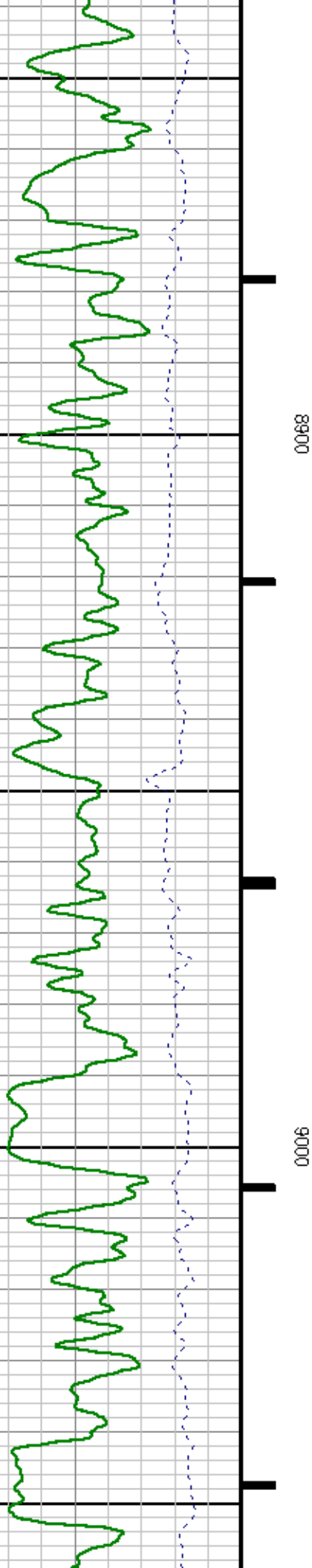
0010

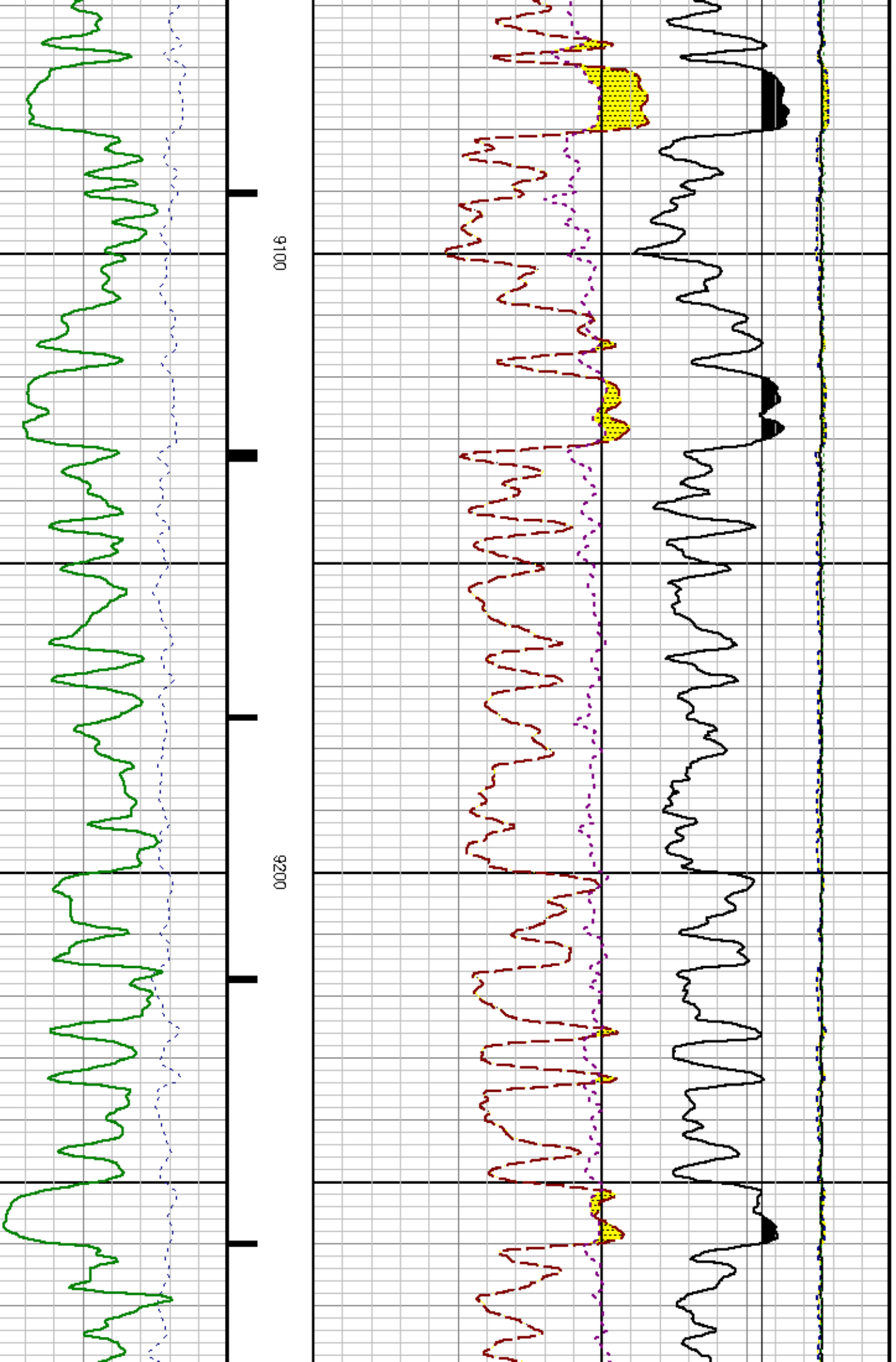
0050

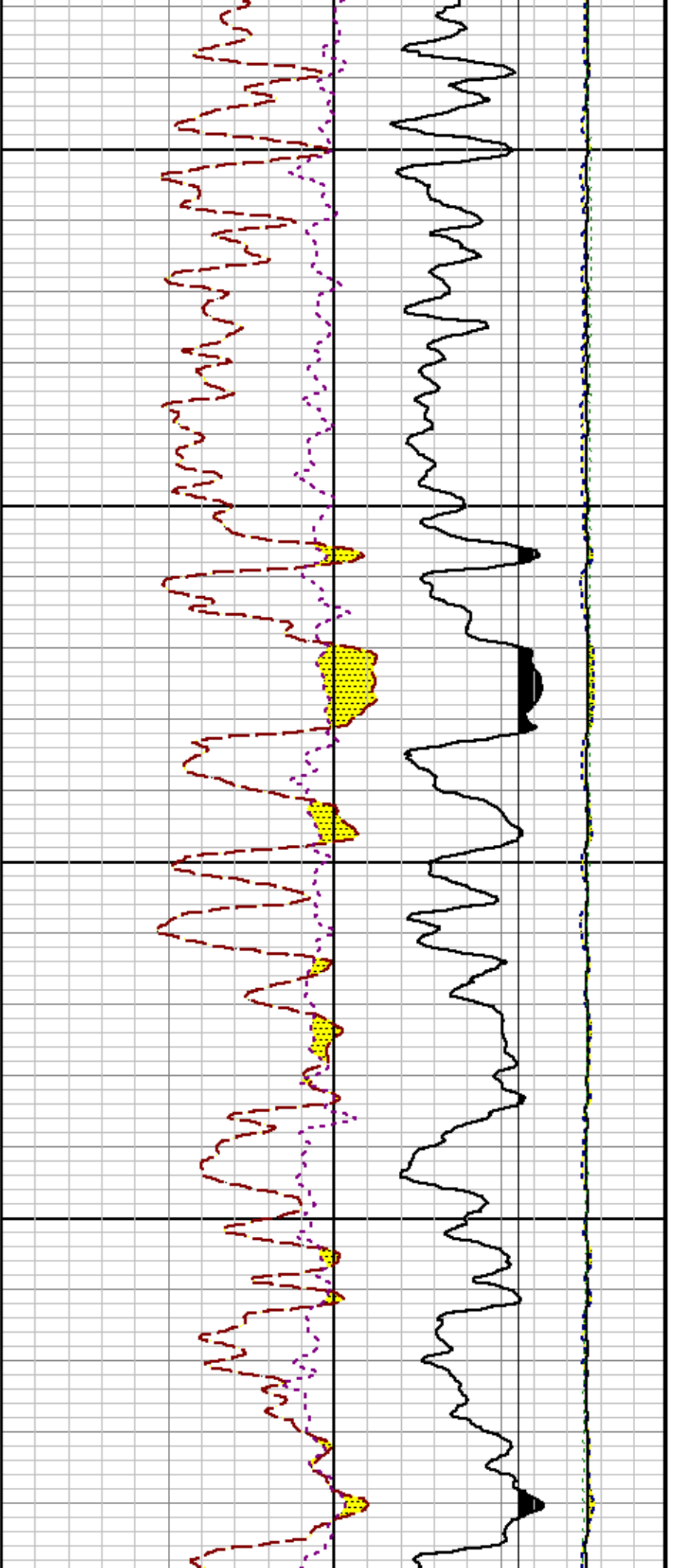
0090







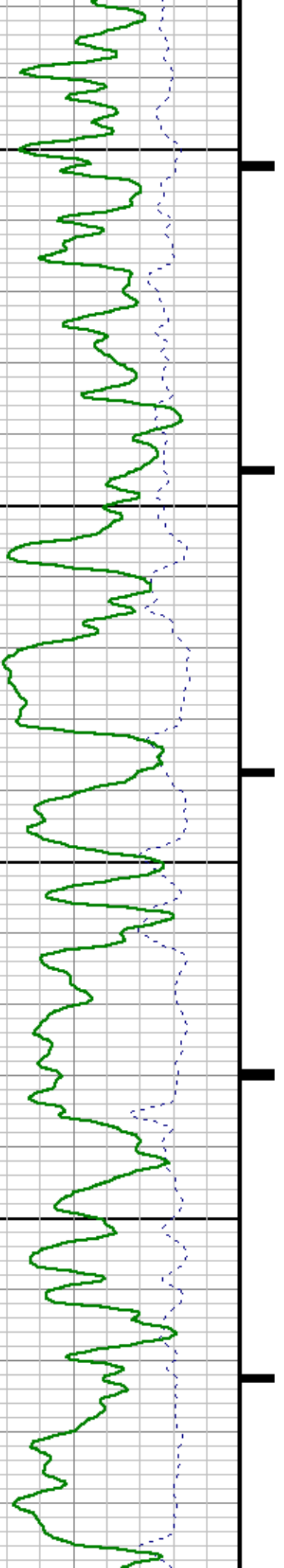


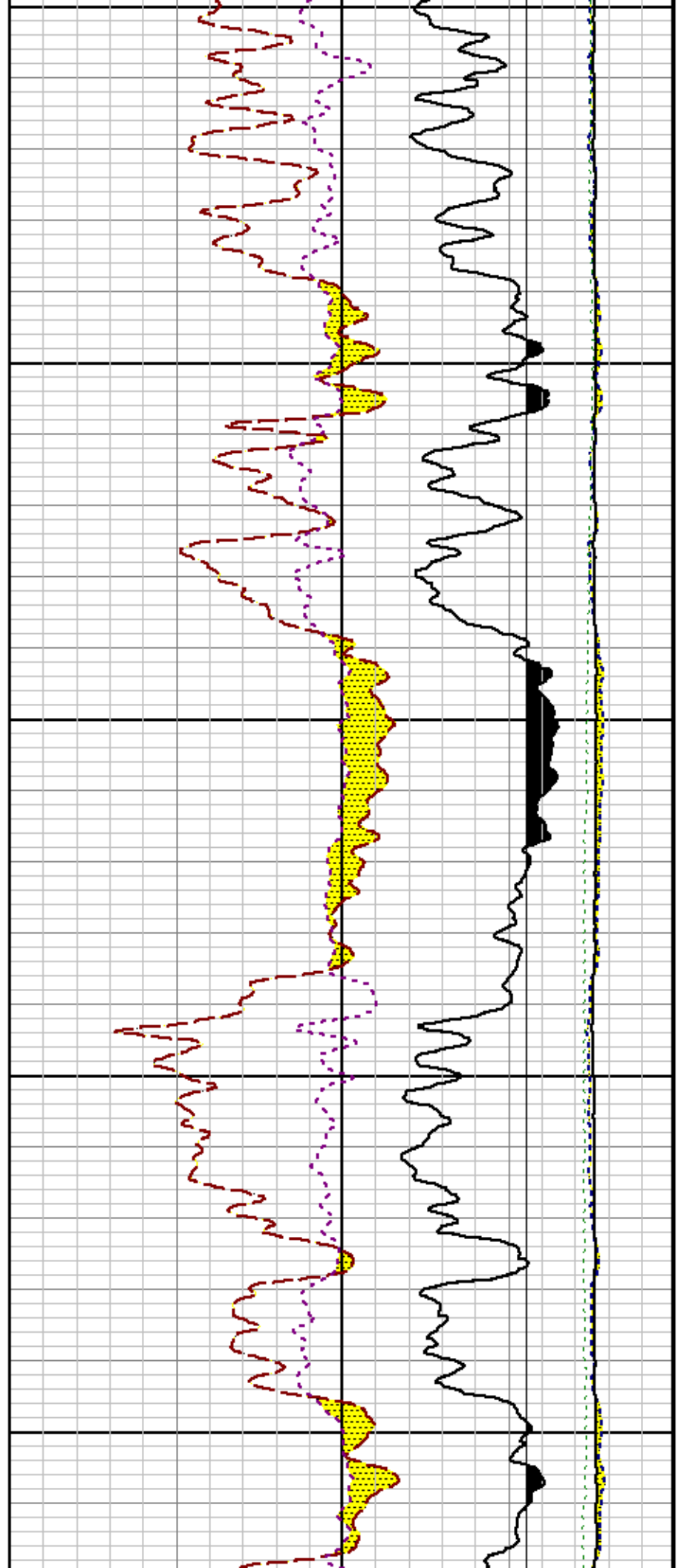
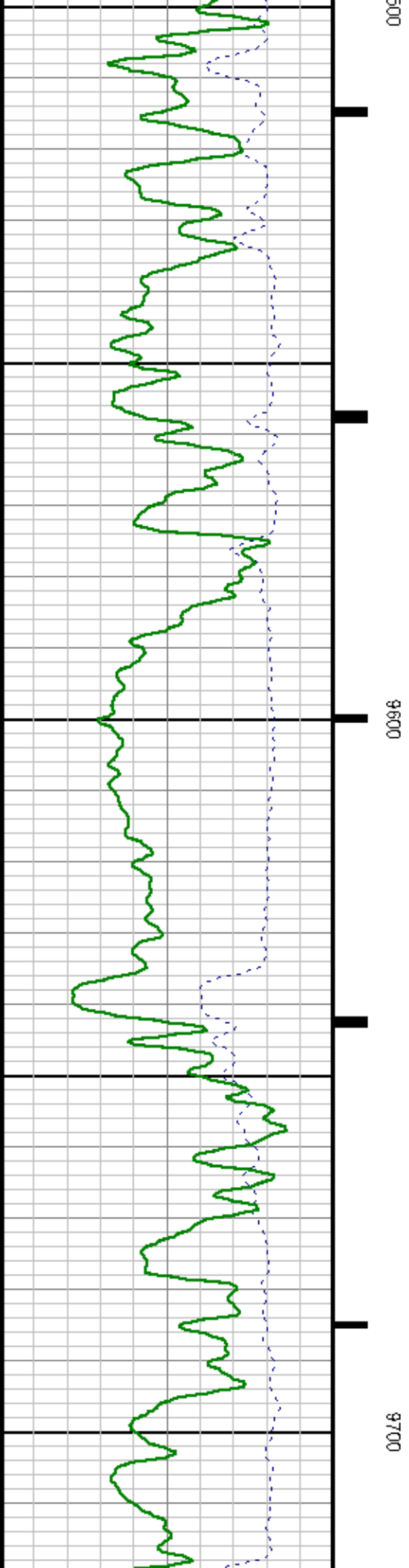


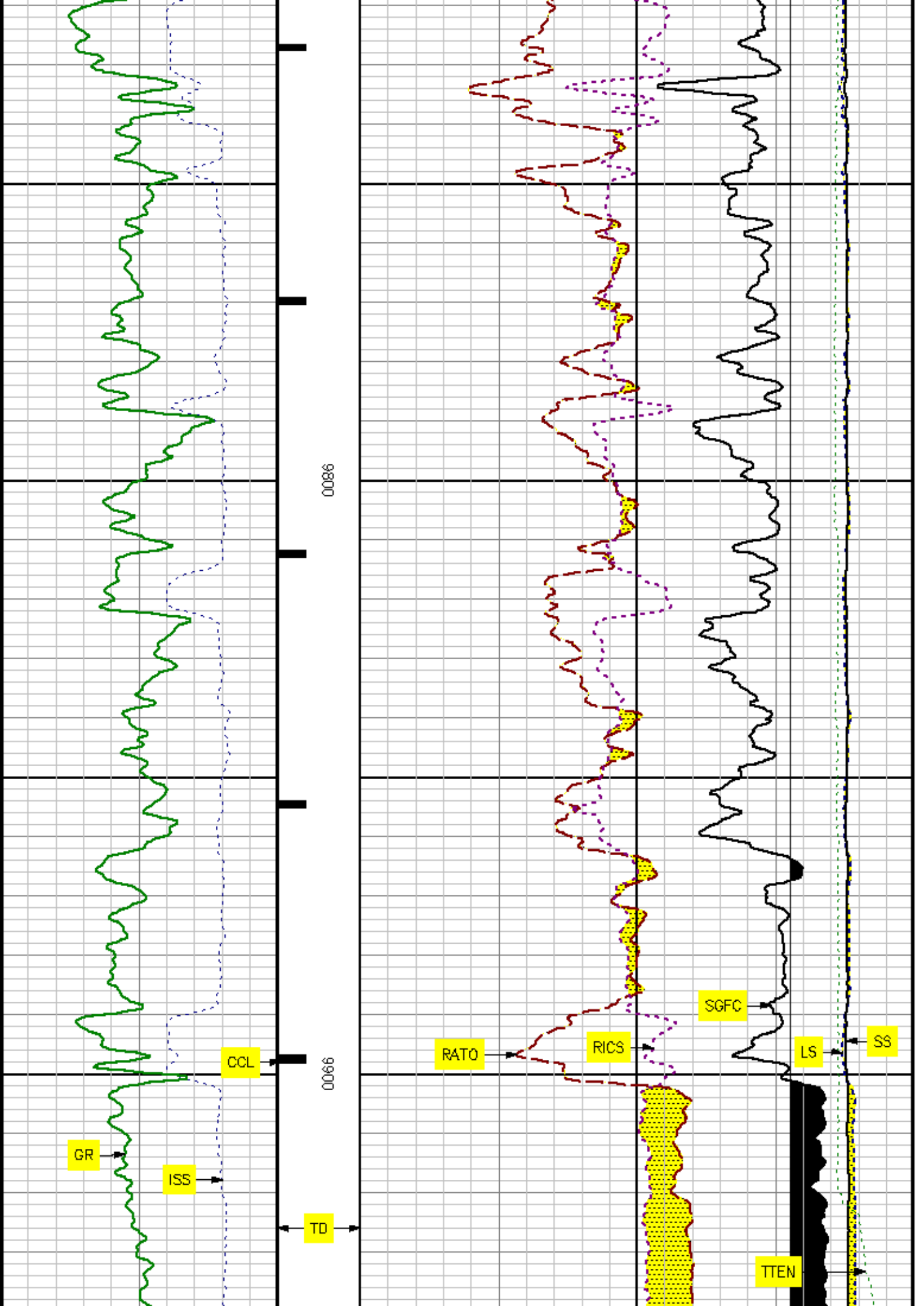
9300

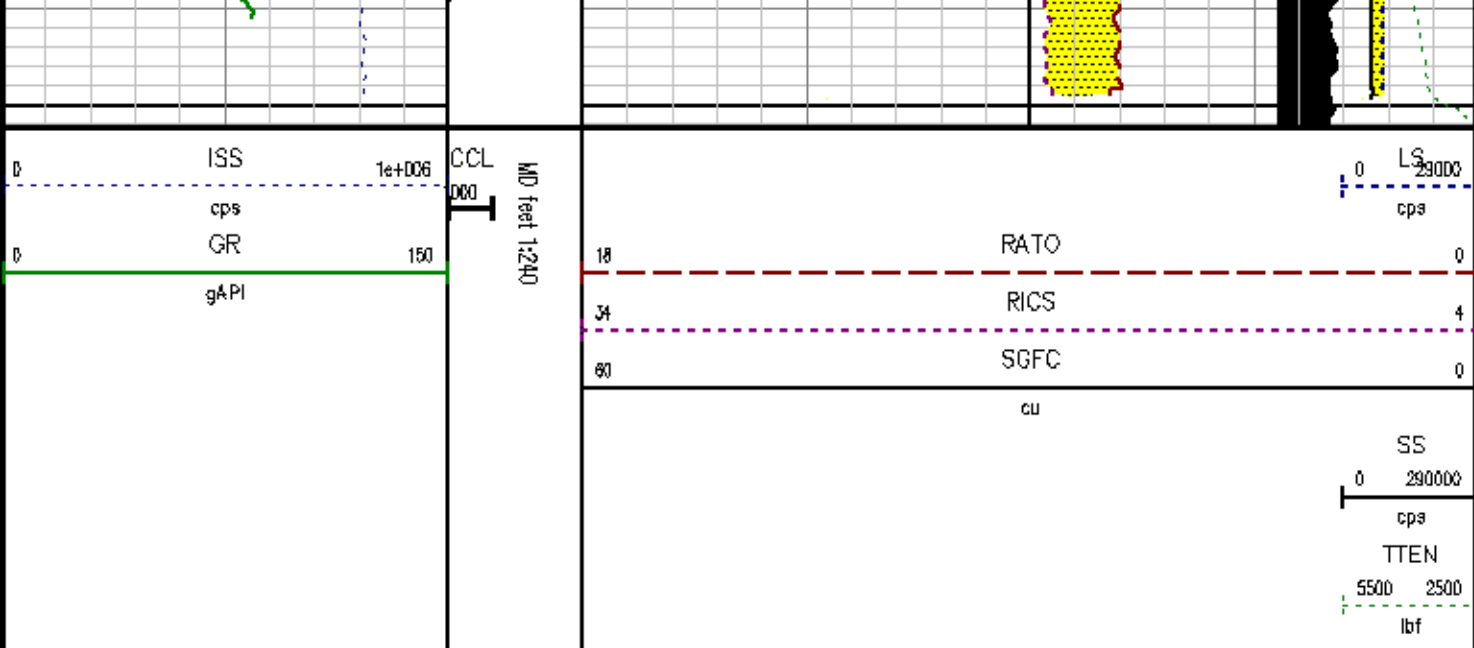
9400

9500









REPEAT SECTION

SPL PROCESSING

MEASUREMENT TYPE	PARAMETER	VALUE	UNITS	TOP	BOTTOM
PNC Porosity	Borehole	Cased		9414.750	9952.250
PNC Porosity	Borehole Size	8.750	inch	9414.750	9952.250
PNC Porosity	Casing Size	4.500	inch	9414.750	9952.250
PNC Porosity	Gas Filled	Non Gas Filled		9414.750	9952.250
PNC Porosity	Matrix	Sandstone		9414.750	9952.250

DEPTH OFFSETS

(for Acquired Curves)

SERIES	DEPTH OFFSET	ACQUIRED CURVES					
B248EA	-15.470	FLTM					
B248EA	-13.470	CCL	CHV				
B262XA	-10.189	GR					
B281XA	-0.662	HVC3Q0	SEQ3	AMA3	AML3	BKX	CXS
		CPT3Q0	CPT3Q2	CPT3Q3	CPT3Q4	ET3	IXS
		MCS3	MCS3Q0	QCAL3	RGN3	RICX	SDA3
		EDL3	SCAL3	SCAL3	TTA3	YS	ADDC3

B2B1XA -0.250

B2B1XA 0.000

SYSTEM 0.000

SDCL	SGA3	SSL	STA3	XS	ASPEC3
AMB3	AMF3	CHF3	IXSC	IXSN	RATQ23
RICXC	RIN13C	RIN23	RIN23C	SD3D	SG3D
SGB3	SGF3	MDTH3	CKSR	IXSR	XSR
RICXR					
HVC2Q0	SEQ2	AMA2	AMB2	AMF2	AML2
BKL	CHF2	CLS	CPT2Q0	CPT2Q2	CPT2Q3
CPT2Q4	ET2	ILS	LS	MCS2	MCS2Q0
QCAL2	RGN2	RICL	RONE23	RTW023	SDA2
SDL2	SGA2	SGB2	SGF2	SGK2	SQL2
STA2	ASPEC2	ILSC	ILSN	MDTH2	RICLC
CLSR	ILSR	LSR	RICLR		
CPRS	HVC1Q0	MY	SEQ	SEQ1	AMA1
AMB1	AME1	AMF1	AML1	BKS	CHF1
CSS	CORB	CORF	CPT1Q0	CPT1Q2	CPT1Q2A
CPT1Q2B	CPT1Q2C	CPT1Q3	CPT1Q4	CPT1Q5	ET1
G1	G2	GE1S	GE2S	ISS	MCS1
MCS1Q0	QA1	QCAL1	QM1	RAT0	RAT013
RBOR	RGN1	RIGS	RIN	RONE	RPOR
RTW0	RIN13	RONE13	RTW013	SALB	SC1
SDA1	SDL1	SGA1	GB1	SGBC	SGE1
SGF1	SGFC	SGK1	SQL1	SS	SS2
STA1	PD1S	PD2S	PD3S	MD1S	MD2S
MD3S	DG1S	DG2S	DG3S	PD1M	PD2M
PD3M	MD1M	MD2M	MD3M	DG1M	DG2M
DG3M	MVS	MA	MVM	FILV	IAM
TA	PVM	PVS	IAS	SSTAT	QPD1
QPD2	QPD3	QMD1	QMD2	QMD3	QDG1
QDG2	QDG3	QMA	QTA	QFILV	QMV
QPV	QIA	DERR	DCNT	QPK1	QSA1
PKS1	ASPEC1	HOC	FE2XC	ISSC	RINC
ISSN	RDEN	MDTH1	RICSC	CSSR	G1R
G2R	ISSR	SSR	SS2R	RATOR	RAT013R
RBORR	RICSR	RINR	RIN13R	RONER	RPORR
RTWOR					
TEN	TEN				

Created by : RPM9, v5.0.0.0

Plotted by : PlotMgr, v5.4.504

Company : MARATHON OIL COMPANY

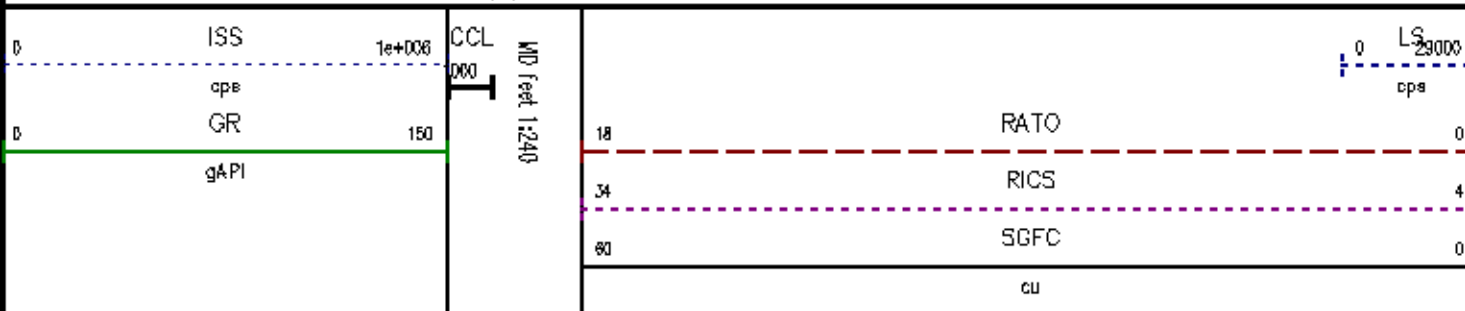
Well : 697-12A-21

File Name : d:\well\data\21rpm\repeat.txt

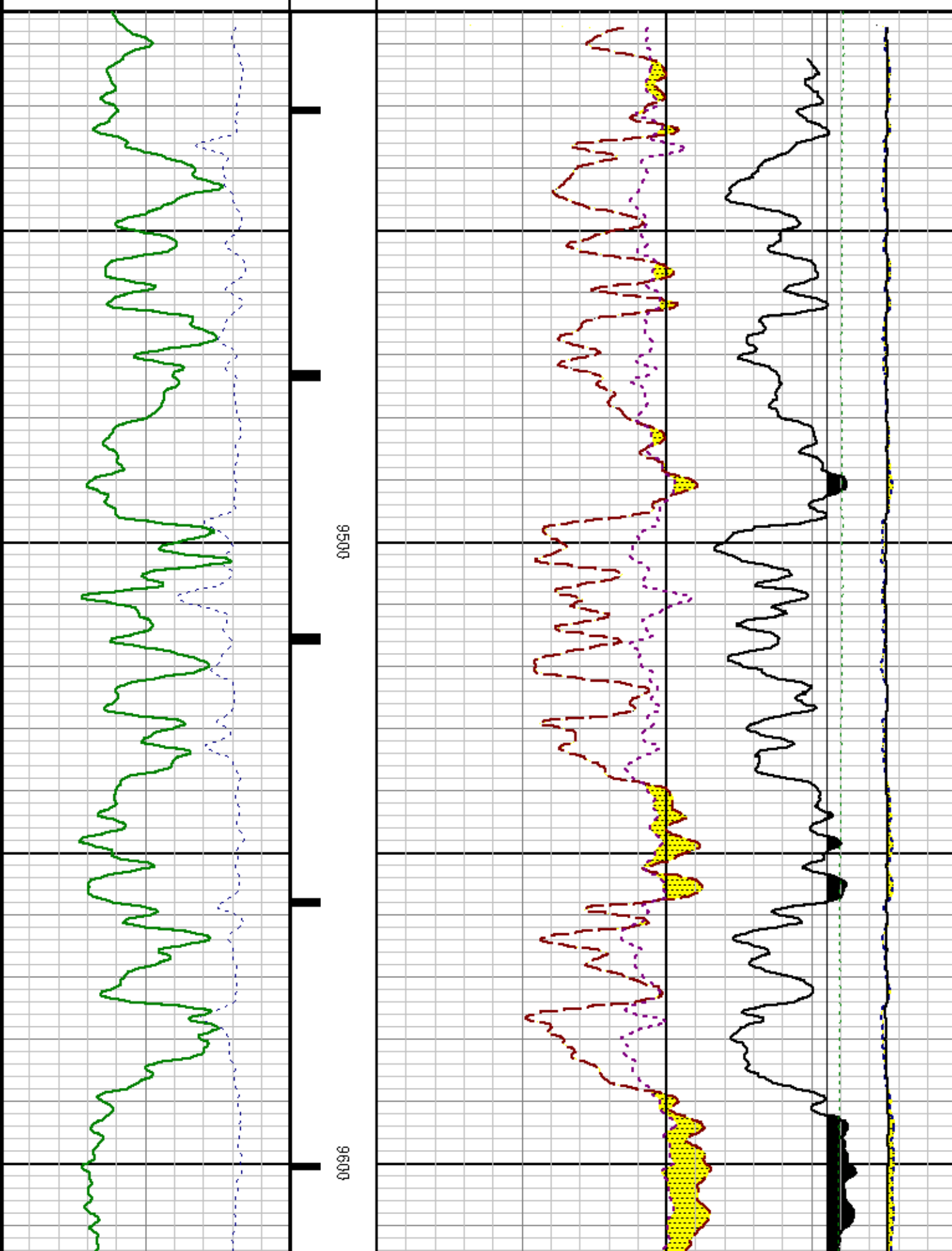
Mode : PlotMgr 5.4.504

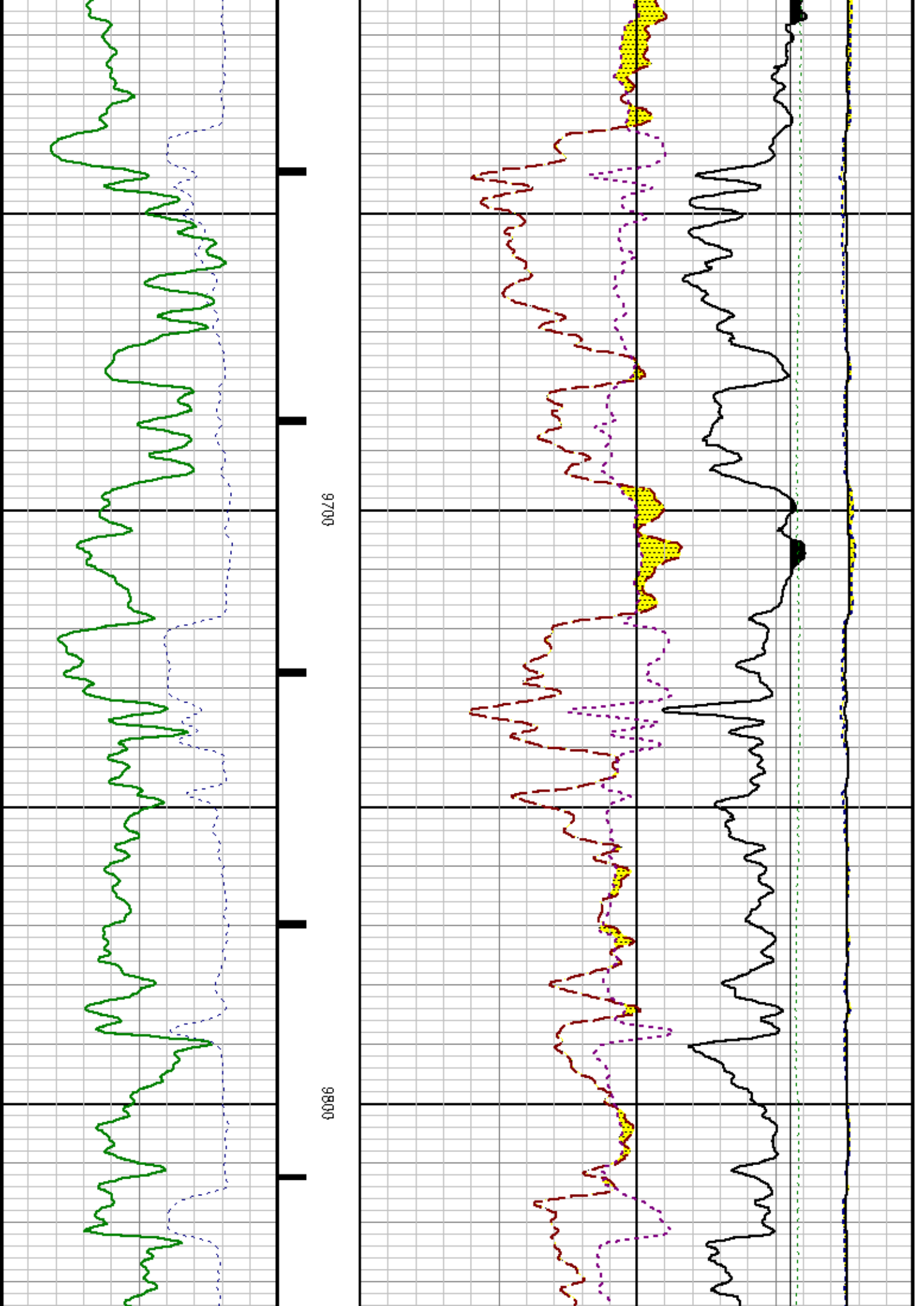
Interval : 9414.75 - 9952.25 feet UP

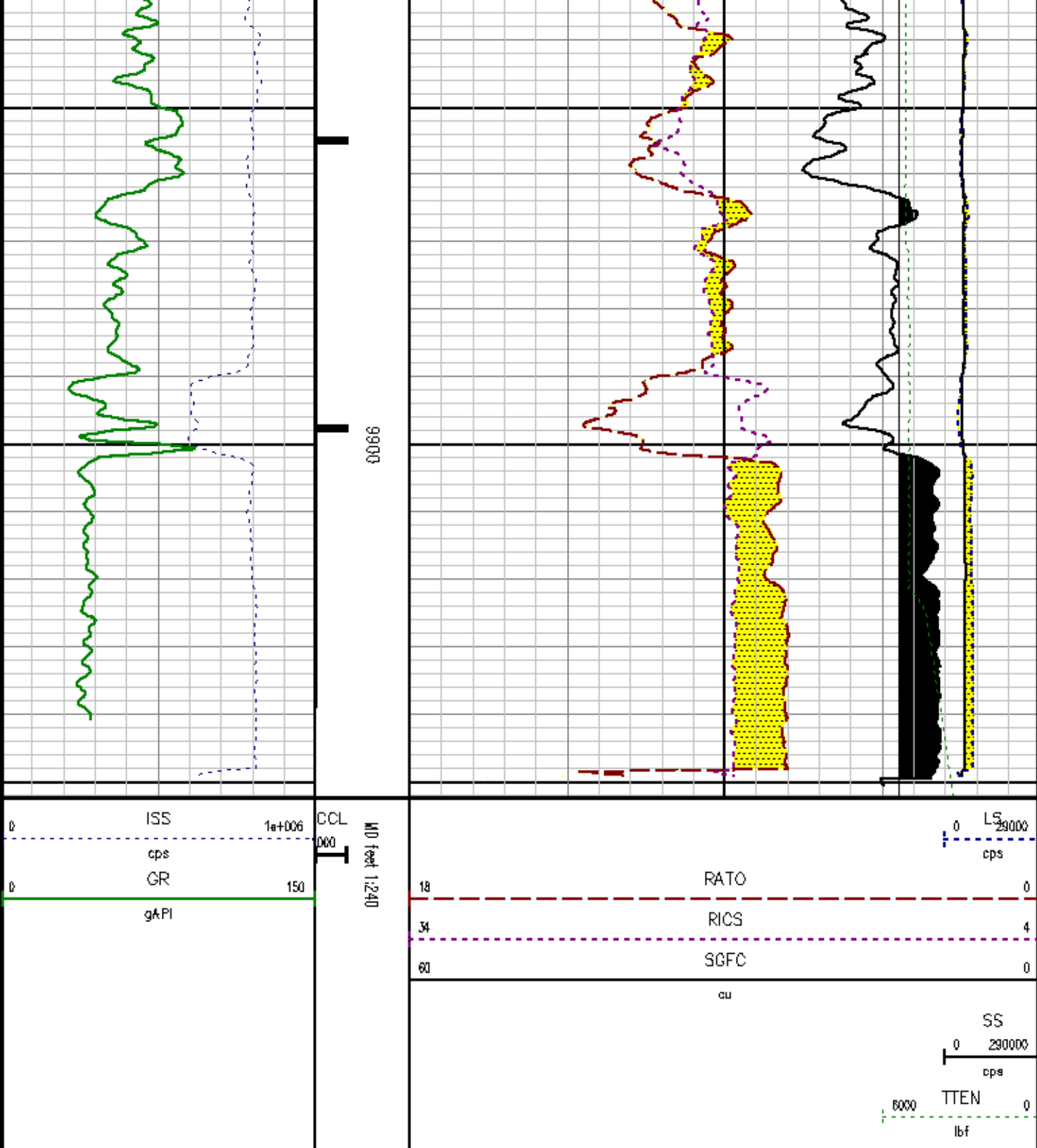
Created : 1/8/2009 12:07:35 PM



SS
0 290000
cps
TREN
6000 0
lbf







CALIBRATION SUMMARY

GAMMA RAY

Calibration File: C:\case\calver\GE\655N1.cal

CALIBRATION SUMMARY

DATE/TIME PERFORMED:		Tue Nov 04 15:42:18 2008		TOOL SERIES:		8262XA		ASSET:		655		SEQ:		N1	
Calibrator #		Background		Calibrator On		Multiplicative		Background		Calibrator On		Differential			
		[cps]		[cps]				[api]		[api]		[api]			
S2K DA657		114.00		459.00		0.522		59.48		239.48		180.00			

Verification File: C:\case\calver\GE\655J1.VP

PRIMARY VERIFICATION

DATE/TIME PERFORMED:		Tue Jan 06 16:39:43 2009		TOOL SERIES:		8262XA		ASSET:		655		SEQ:		J1	
Calibrator #		Background		Calibrator On		Multiplicative		Background		Calibrator On		Differential			
		[cps]		[cps]				[api]		[api]		[api]			
S2K DA657		94.91		369.49		0.644		61.09		237.83		176.74			

PNC

Calibration File: C:\case\calver\PNC\614D1.cal

PNC 3D CALIBRATION SUMMARY

DATE/TIME PERFORMED:		Sat Dec 06 14:35:10 2008		TOOL SERIES:		8281XA		ASSET:		614		SEQ:		D1	
----------------------	--	--------------------------	--	--------------	--	--------	--	--------	--	-----	--	------	--	----	--

Calibrator #

SHOP SHOP

Source #

8281AA 10148472

	ISS	Mtr VIts (V)	SS Gain	LS Gain	XLS Gain	EA Temp (degF)	Sync Delay (usec)	RCAL
Raw Data	810663	130.00	2277.00	2197.00	2298.00	91.02	15.00	0.9795
Interpolated	1300000	157.47	2255.16	2181.22	2289.98			

	ISS	BKS	BKL	BKX	SGA1	SDA1	SGA2	SDA2
Raw Data	810663	7592.27	1177.21	164.01	26.08	0.12	24.57	0.25
					25.35 26.15	0.00 0.20	23.60 24.80	0.00 0.40

	ISS	ILS	IXS	SS	SS2	LS	CSS	CLS
Raw Data	810663	189339.23	29748.37	108300.66	38764.82	10126.79	66062.70	16292.12
Fit Quality %		0.62	0.51	0.42	0.43	0.72	0.37	0.70

	ISS	RBOR	RIN ISS/ILS	RIN13 ISS/IXS	RICS ISS/CSS	RATO SS/LS	RTWO SS2/LS	RONE CSS/CLS
Raw Data	810663	1.43	4.28	27.25	12.27	10.79	3.83	4.05

		1.42	1.45	3.55	5.21	22.20	32.10	10.99	16.34	10.06	11.10	3.57	3.95	3.76	4.22
Fit Quality %		0.03		0.33		0.42		0.35		0.30		0.28		0.28	
Reduced	1396272	1.43		4.32		27.45		12.34		10.84		3.84		4.07	
		1.42	1.45	4.33	5.52	27.60	32.70	13.70	15.70	10.60	11.00	3.78	3.92	4.01	4.17

TOOL DIAGRAM

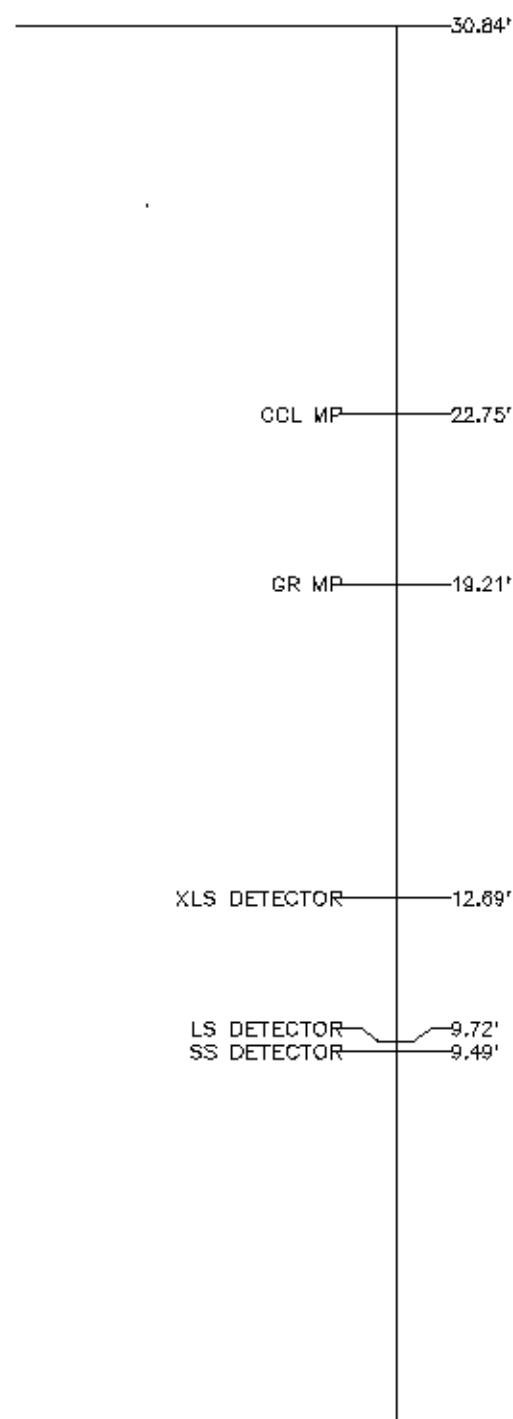
OTA SHORT CABLE HEAD

PCM POWER SUPPLY (8250EA)

TELEMETRY / CCL (8248EA)

GAMMA RAY (8262XA)

RESERVOIR PERFORMANCE MONITOR (8281XA)



0.00'

Total Length: 30.84'
 Total Weight: Not Available
 Max Diameter: 0" 1.70"



Baker Atlas

CASE

Company MARATHON OIL COMPANY

Well 697-12A-21

Field GRAND VALLEY

County GARFIELD State COLORADO

File No:

1715

API No:

05-045-15038-00

Location

SHL: 1491' FNL & 1854' FEL

Elevations

KB 8322 ft

DF 8321 ft

GL 8300 ft

SEC 12 TWP 6S RGE 97W