



**SUPERIOR**  
Black Lick, Pa.  
Mercer, Pa.  
Wooster, Oh.  
Cleveland, Ok.  
Trinidad, Co.

## CEMENT BOND LOG

Company Petroglyph Operating Company, Inc.

Well McCombs No 5

Field Wildcat

County Huerfano

State CO

Location:

API # : 05 055 06124 00

1528' FNL & 538' FWL

SEC 1 TWP 28S RGE 67W

Permanent Datum Ground Level Elevation 6450'  
Log Measured From Kelly Bushing 8' Above G.L.  
Drilling Measured From Kelly Bushing

Other Services  
CIBP

Elevation  
K.B. 6458'  
D.F. -----  
G.L. 6450'

Date

2-24-09

Run Number

One

Depth Driller

3490'

Depth Logger

2389'

Bottom Logged Interval

2385'

Top Log Interval

Surface

Open Hole Size

///

Type Fluid

Water

Density / Viscosity

///

Max. Recorded Temp.

137F

Estimated Cement Top

1696'

Time Well Ready

ROA

Time Logger on Bottom

8:15AM

Equipment Number

T0702

Location

Trinidad

Recorded By

E. Ray

Witnessed By

Mr. T. Meland

Borehole Record

Bit

From

To

Size

Weight

From

To

Casing Record

Size

10 3/4"

Wgt/Ft

Top

Bottom

Surface String

7"

Prot. String

00

Production String

00

Liner

NA

<<< Fold Here >>>

All interpretations are opinions based on inferences from electrical or other measurements and we cannot and do not guarantee the accuracy or correctness of any interpretation, and we shall not, except in the case of gross or willful negligence on our part, be liable or responsible for any loss, costs, damages, or expenses incurred or sustained by anyone resulting from any interpretation made by any of our officers, agents or employees. These interpretations are also subject to our general terms and conditions set out in our current Price Schedule.

### Comments

Set CIBP @ 2390' 2-23-09

North on I-25, West on Hwy 160, Turn Right @ Rio Cucharas Inn, Drive on main road  
Approx. 1.1miles Turn Left, Right @ Y, Stay on main road 1.8 miles, turn right (Covenant Restricted sign),  
Stay on main road 1.4 miles past Johnson sign, left @ 4-way to location

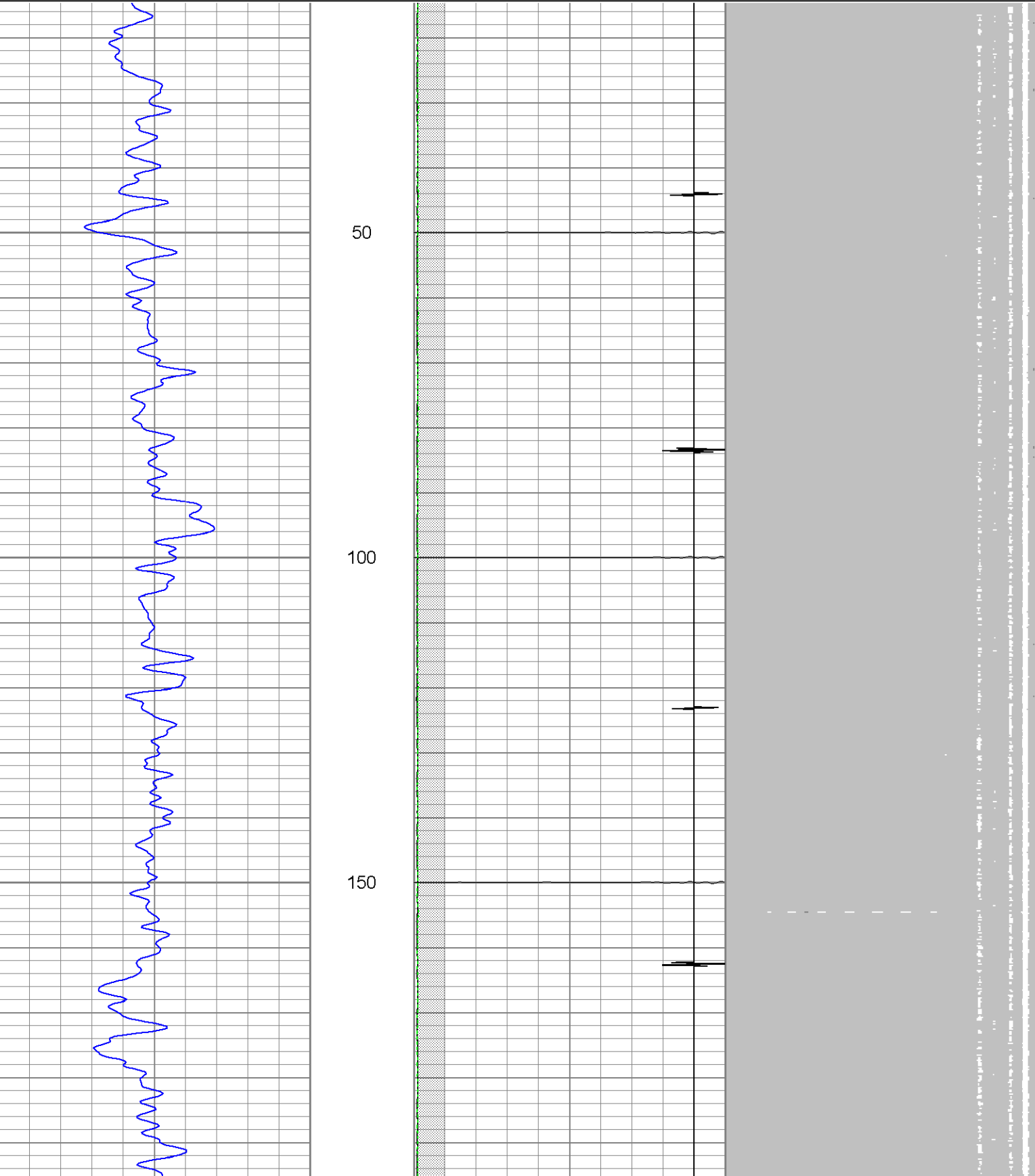


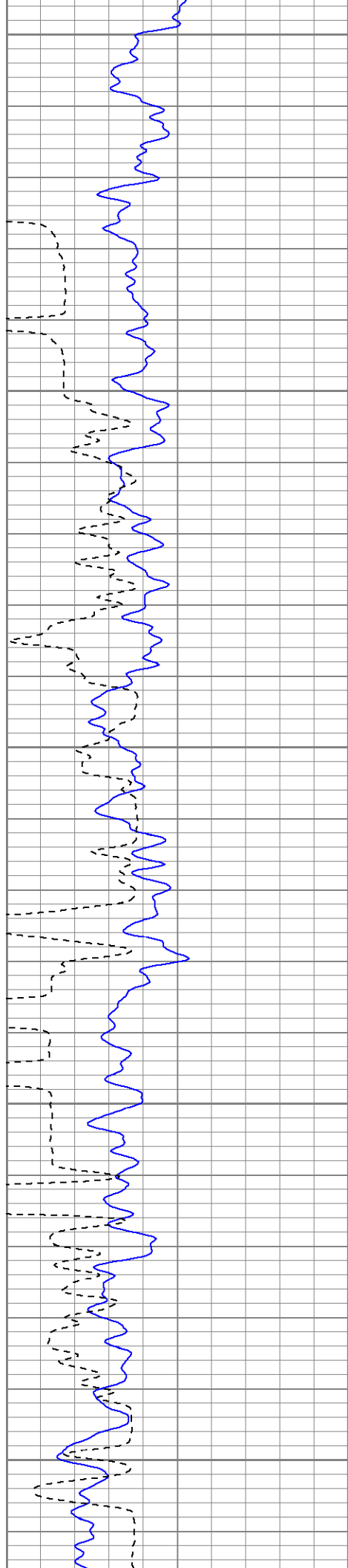
**SUPERIOR**  
Black Lick, Pa.  
Mercer, Pa.  
Wooster, Oh.  
Cleveland, Ok.  
Trinidad, Co.

# Main Pass

Database File: mcombsno5022409b.db  
Dataset Pathname: pass1.1  
Presentation Format: cblrt  
Dataset Creation: Tue Feb 24 09:36:08 2009 by Calc Open-Cased 071220  
Charted by: Depth in Feet scaled 1:240

0	GR (GAPI)	200	0	AMP3 (mV)	100	200	Variable Density	1200
400	TT3 (usec)	200	18	CCL	-2			
			200	CBL5	1200			
			0	AMP5 (mV)	100			





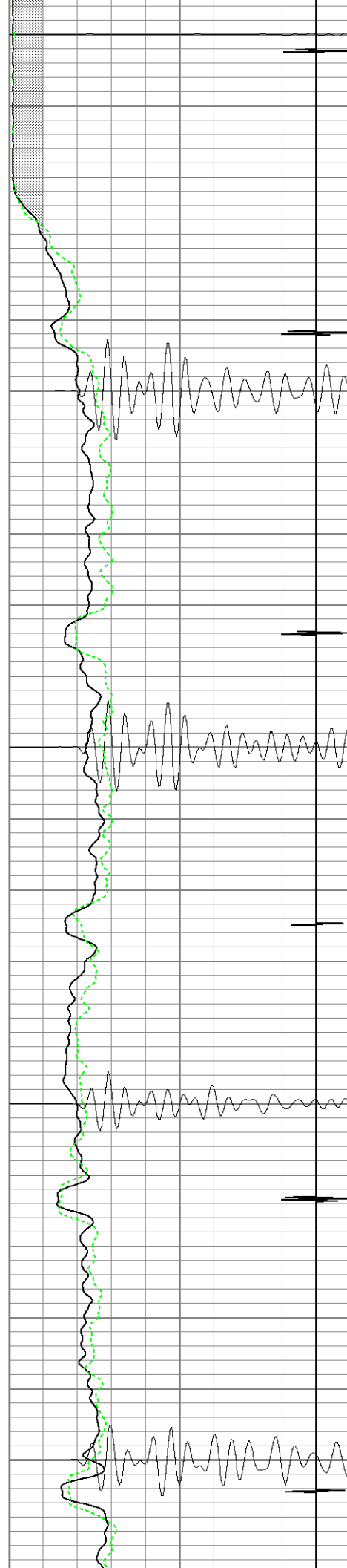
200

250

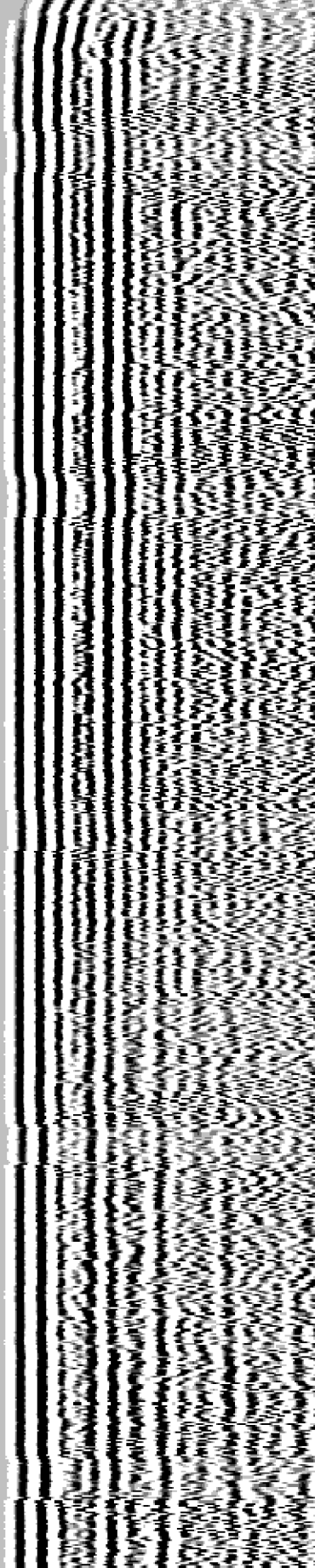
300

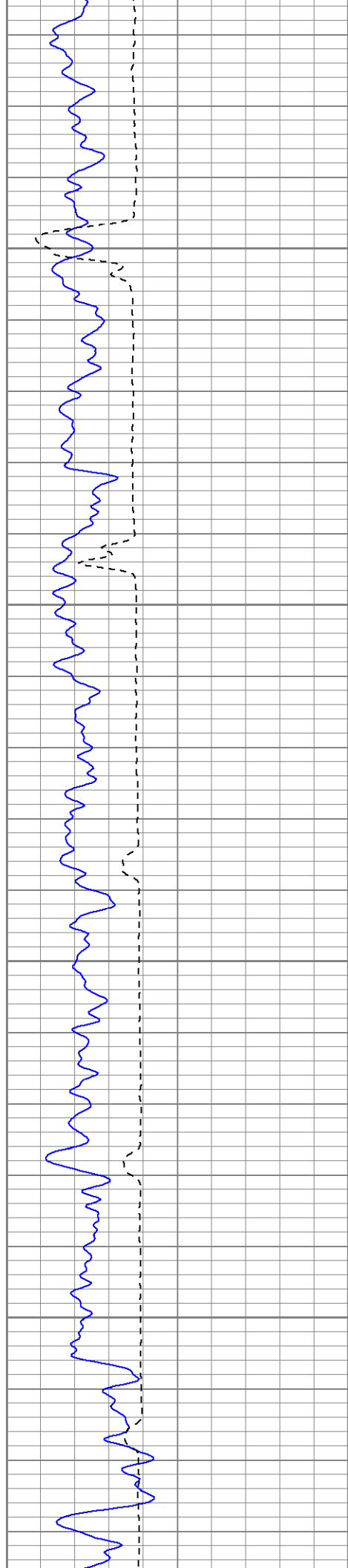
350

400



Fluid Level



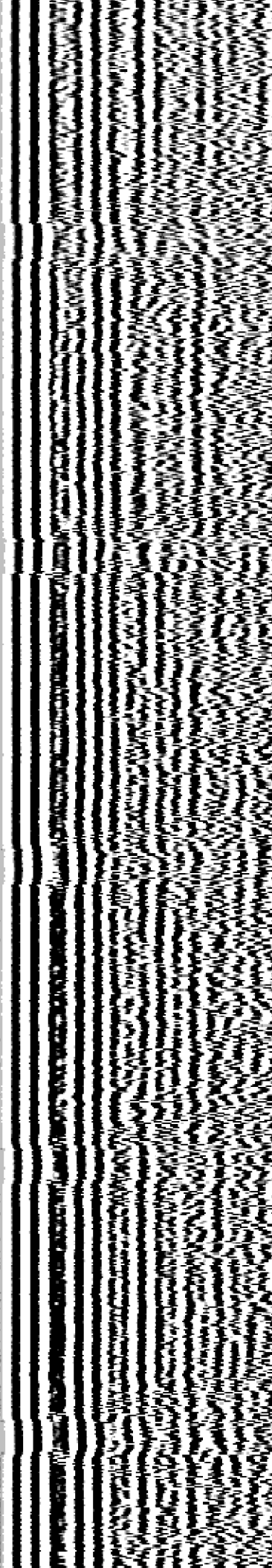
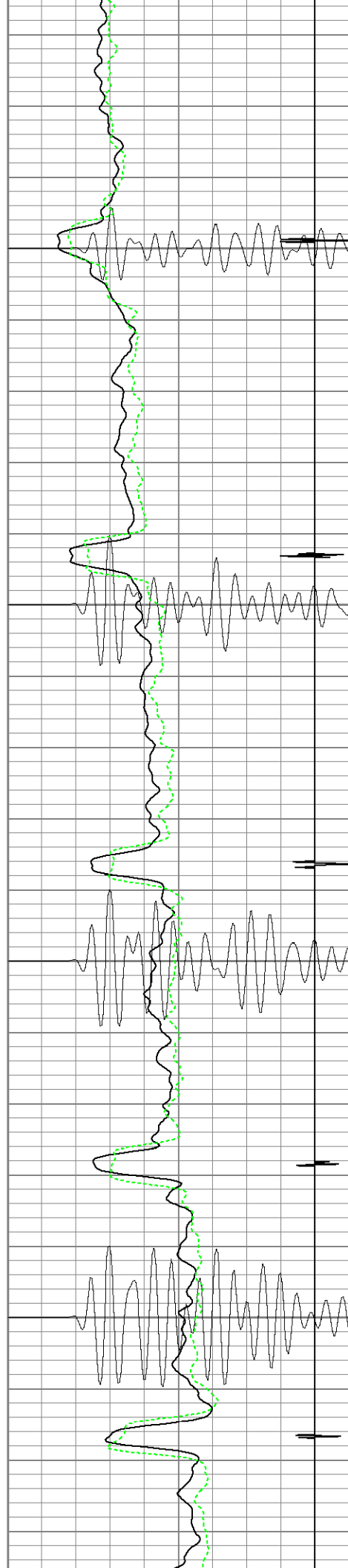


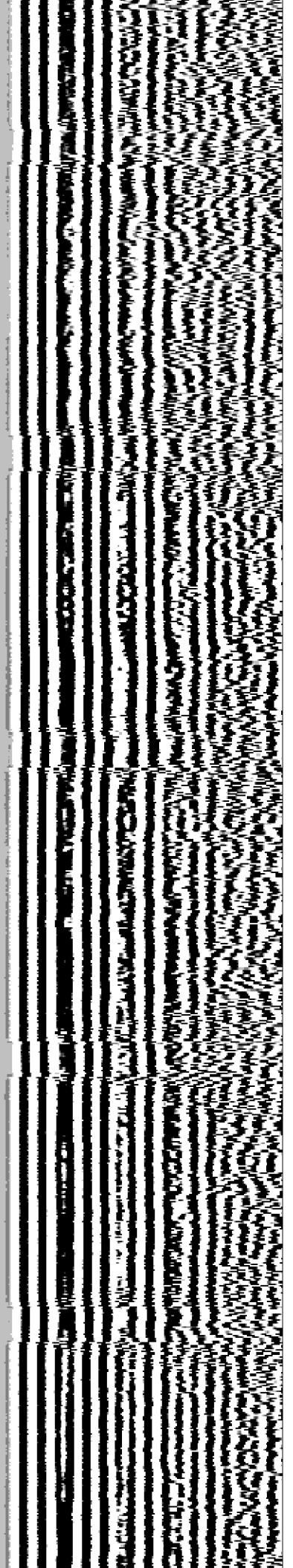
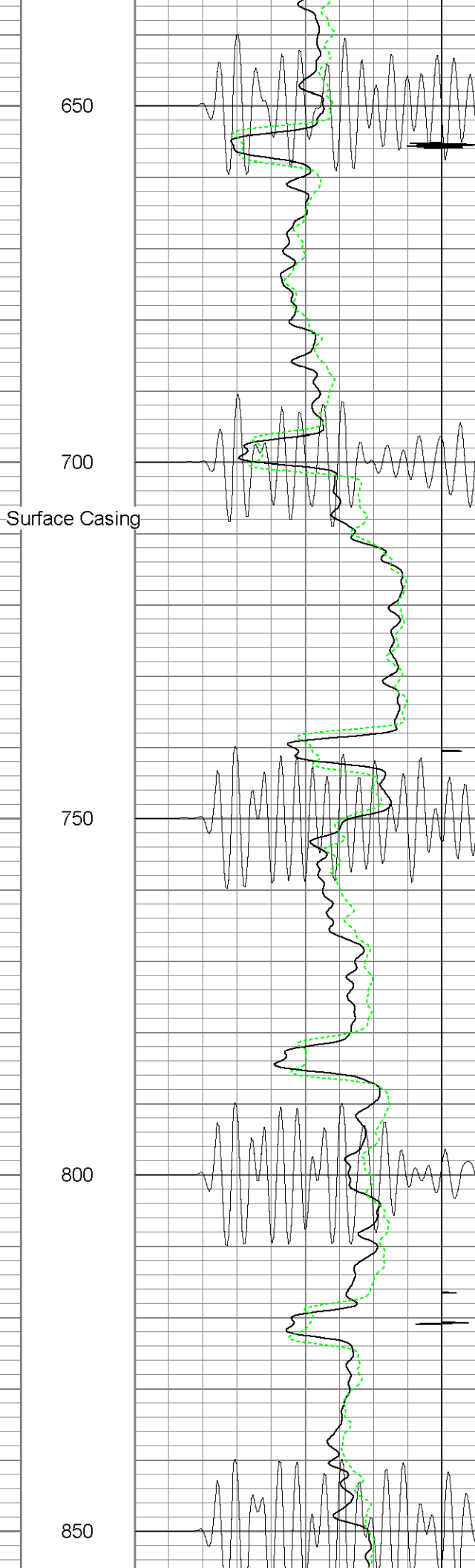
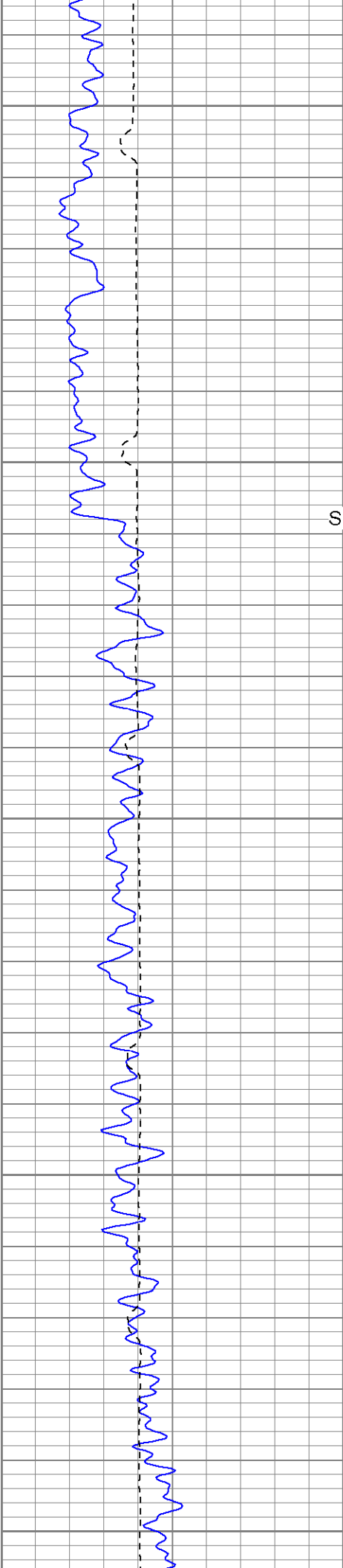
450

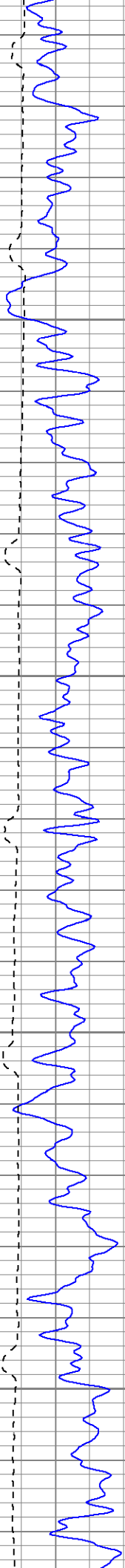
500

550

600





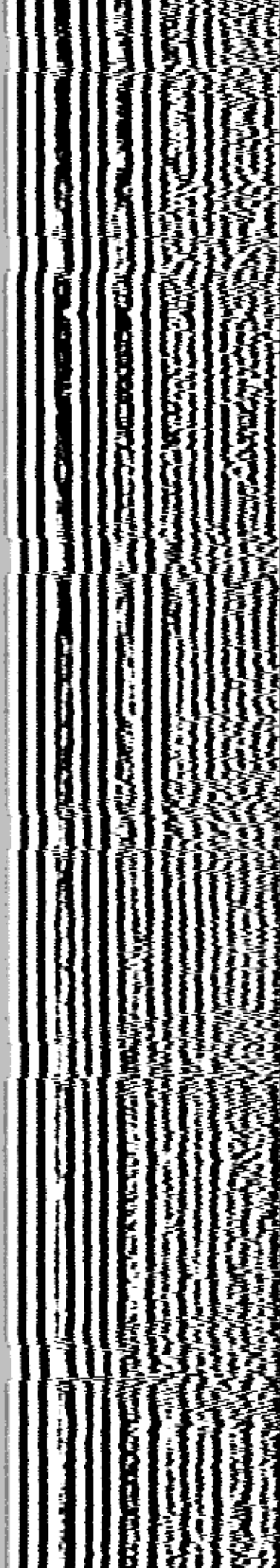
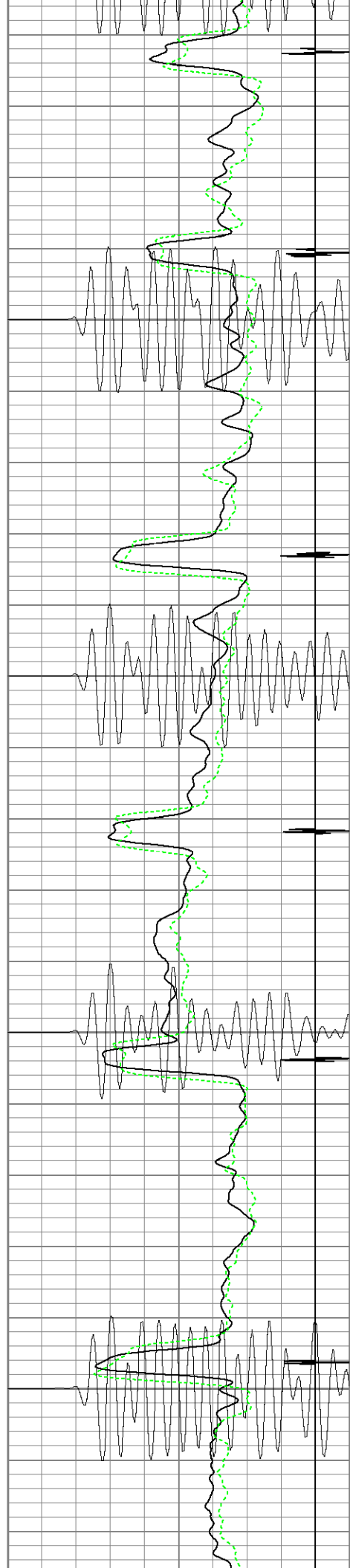


900

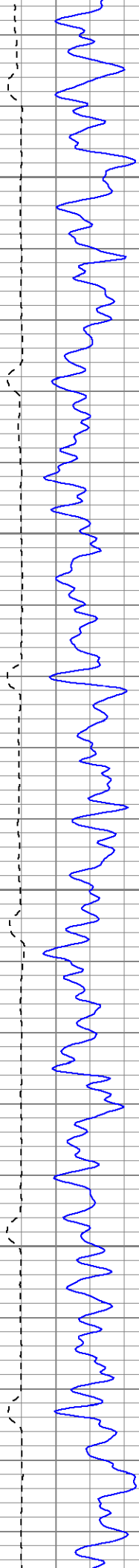
950

1000

1050





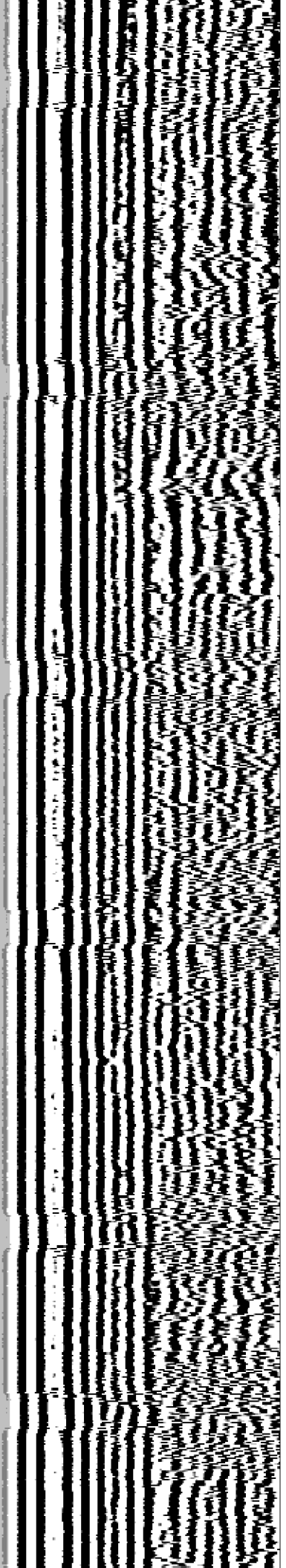
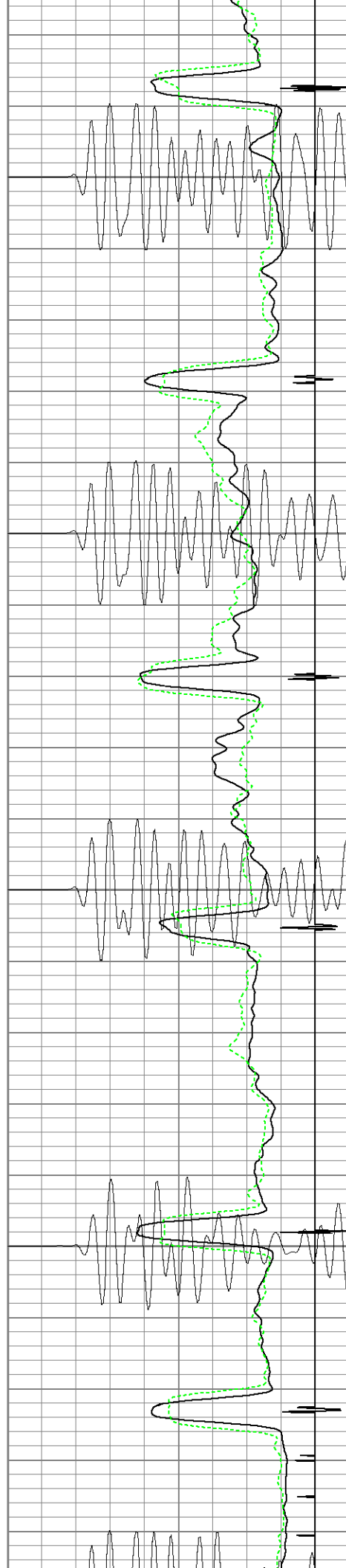


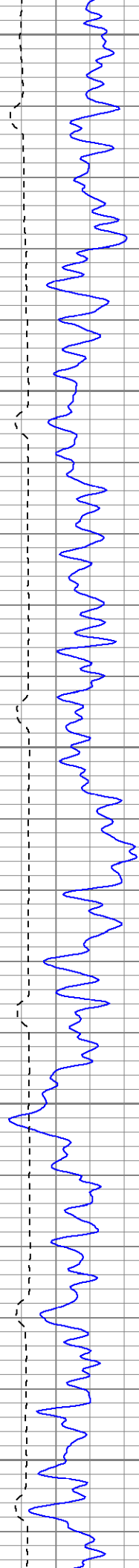
1100

1150

1200

1250





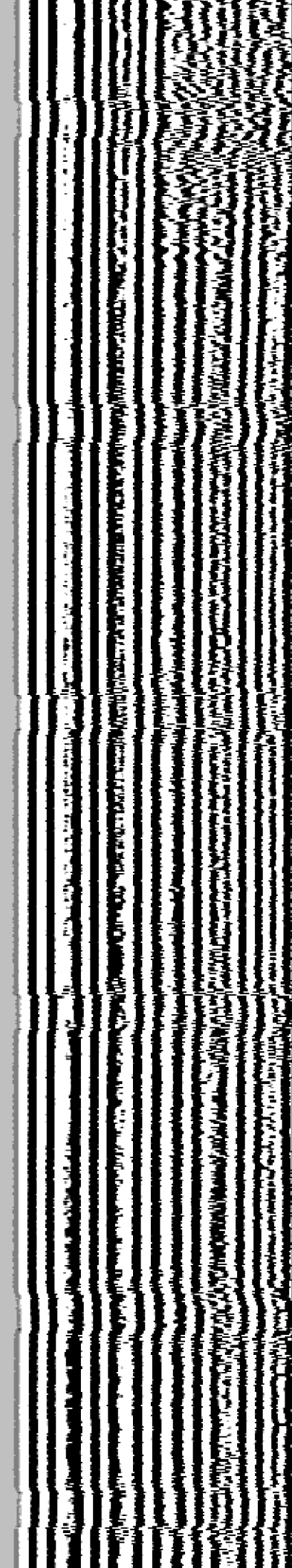
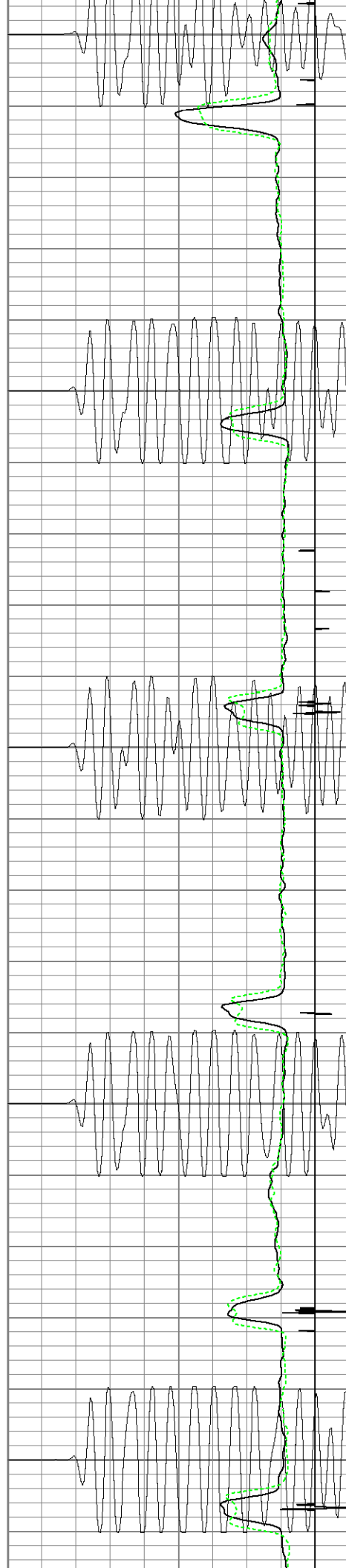
1300

1350

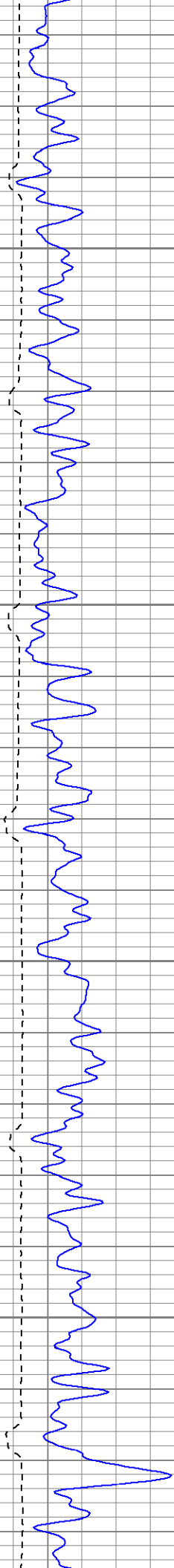
1400

1450

1500







1550

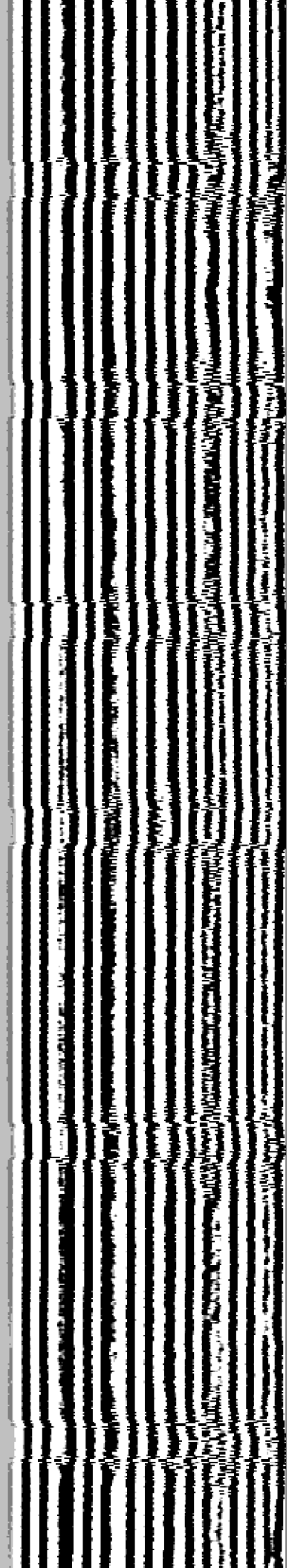
1600

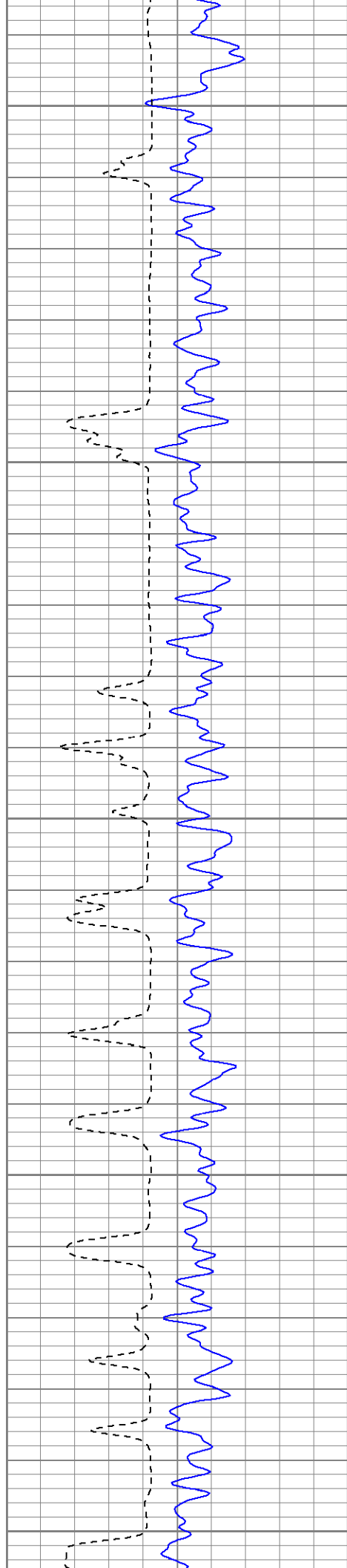
1650

1700



Est Top of Cement





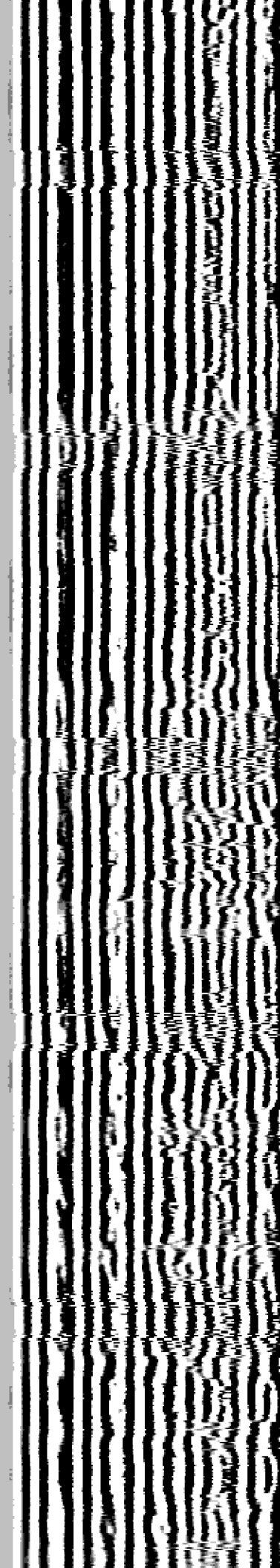
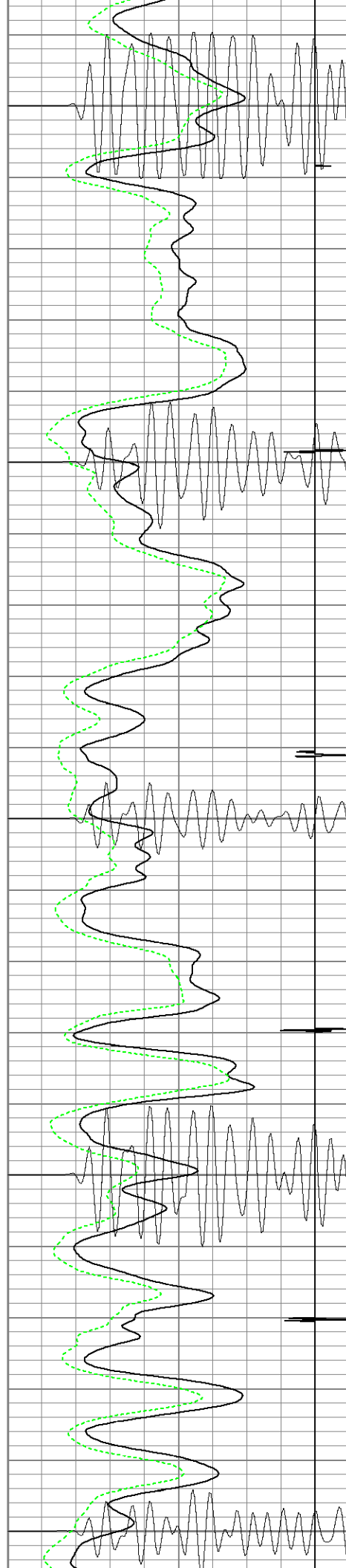
1750

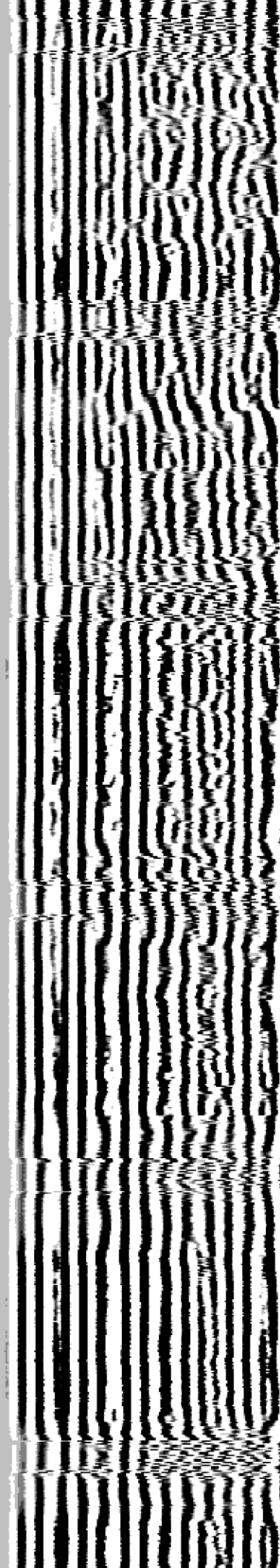
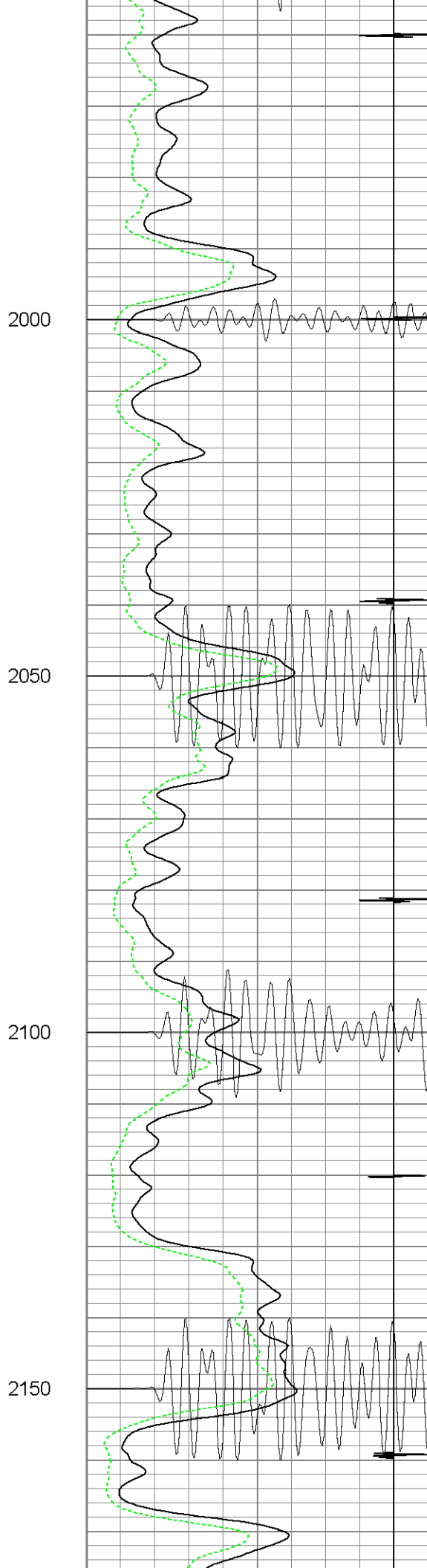
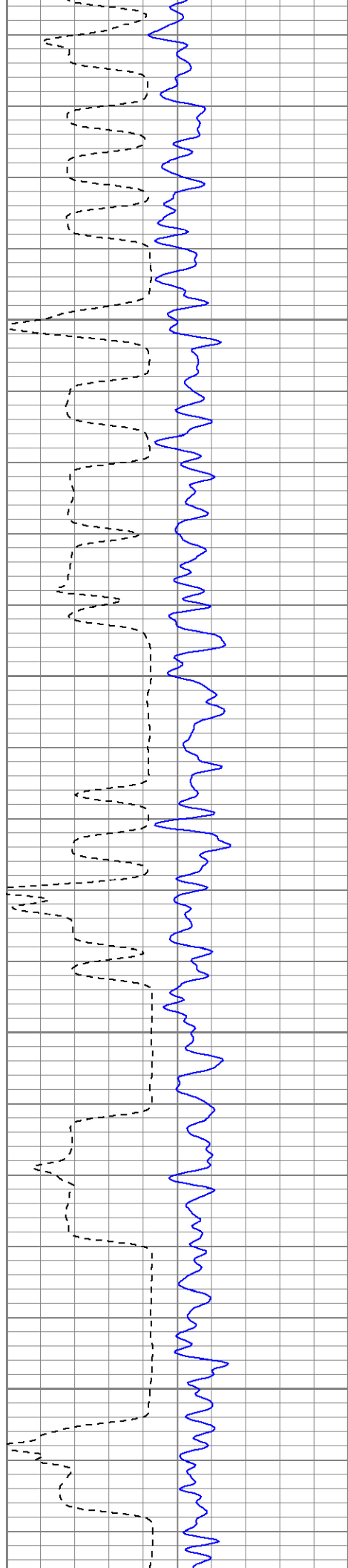
1800

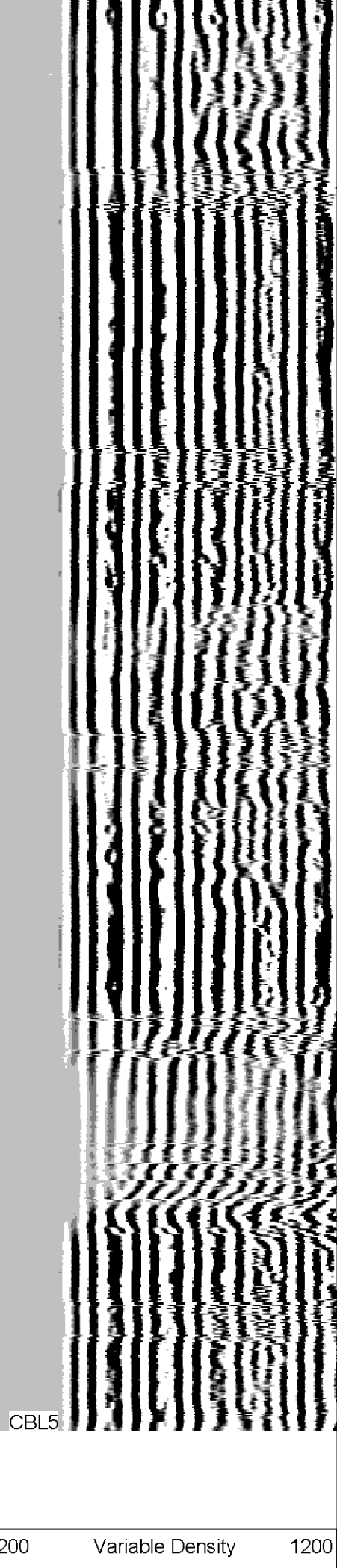
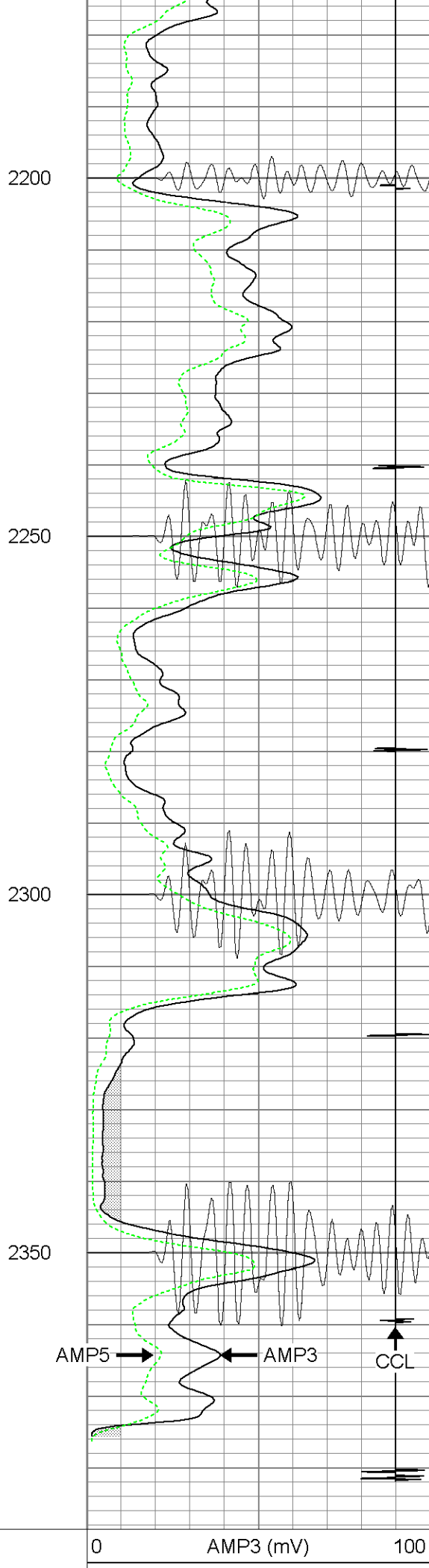
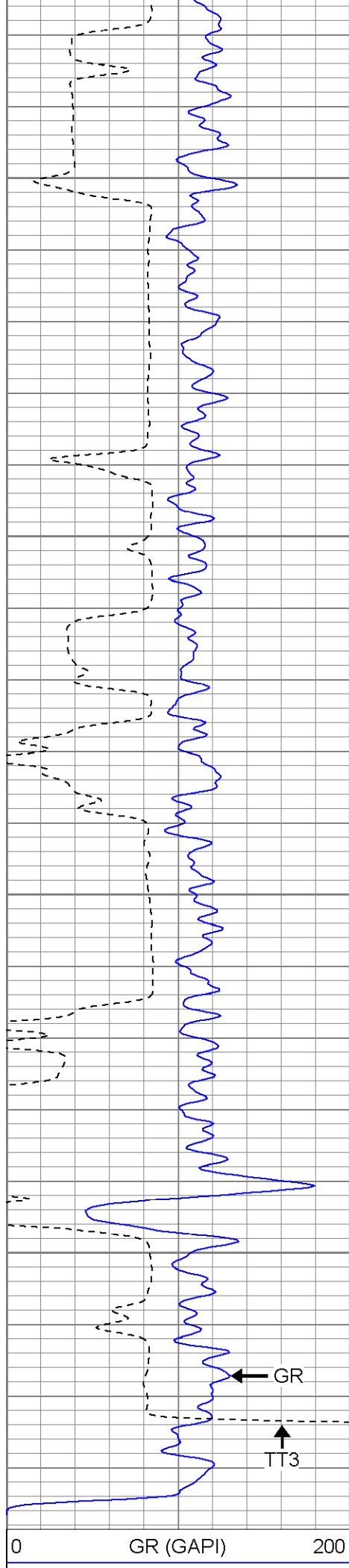
1850

1900

1950







400	113 (usec)	200	18	CCL	-2
			200	CBL5	1200
			0	AMP5 (mV)	100

### Calibration Report

Database File: mcombsno5022409b.db  
Dataset Pathname: pass1  
Dataset Creation: Tue Feb 24 08:20:48 2009 by Log Open-Cased 071220

### Gamma Ray Calibration Report

Serial Number: 080351  
Tool Model: 275D\_INC  
Performed: Fri Feb 20 10:47:57 2009

Calibrator Value: 200.0 GAPI

Background Reading: 50.0 cps  
Calibrator Reading: 270.0 cps

Sensitivity: 0.9091 GAPI/cps

### Inclinometer Calibration Report

Performed: Fri Feb 20 10:47:59 2009

	Low Read.	High Read.	Low Ref.	High Ref.	
X Accelerometer	-3577.20	3614.20	-1.00	1.00	gee
Y Accelerometer	-3610.20	3537.20	-1.00	1.00	gee
Z Accelerometer					

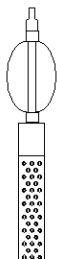
### Cement Bond Log Calibration Report

Serial Number: 081023  
Tool Model: PROBEDIGITALCBL  
Performed: Fri Feb 20 10:47:51 2009

Depth: 97.525 ft  
Casing Diameter: 5.5 in

	3' Spacing	5' Spacing	
Signal Zero:	0	0	mV
Calibrated Amplitude:	85	85	mV
Reading at Signal Zero:	-0.04	-0.04	V
Reading in Free Pipe:	2.15	2.15	V

Gain: 38.8128  
Offset: 1.55251

Sensor	Offset (ft)	Schematic	Description	Len (ft)	OD (in)	Wt (lb)
			None	0.75	1.50	5.00
			X	3.00	3.00	25.00
AMP5	11.75		CBL PROBE PROBEGITALCBL (0810238.75	2.75	106.50	

[illegible]