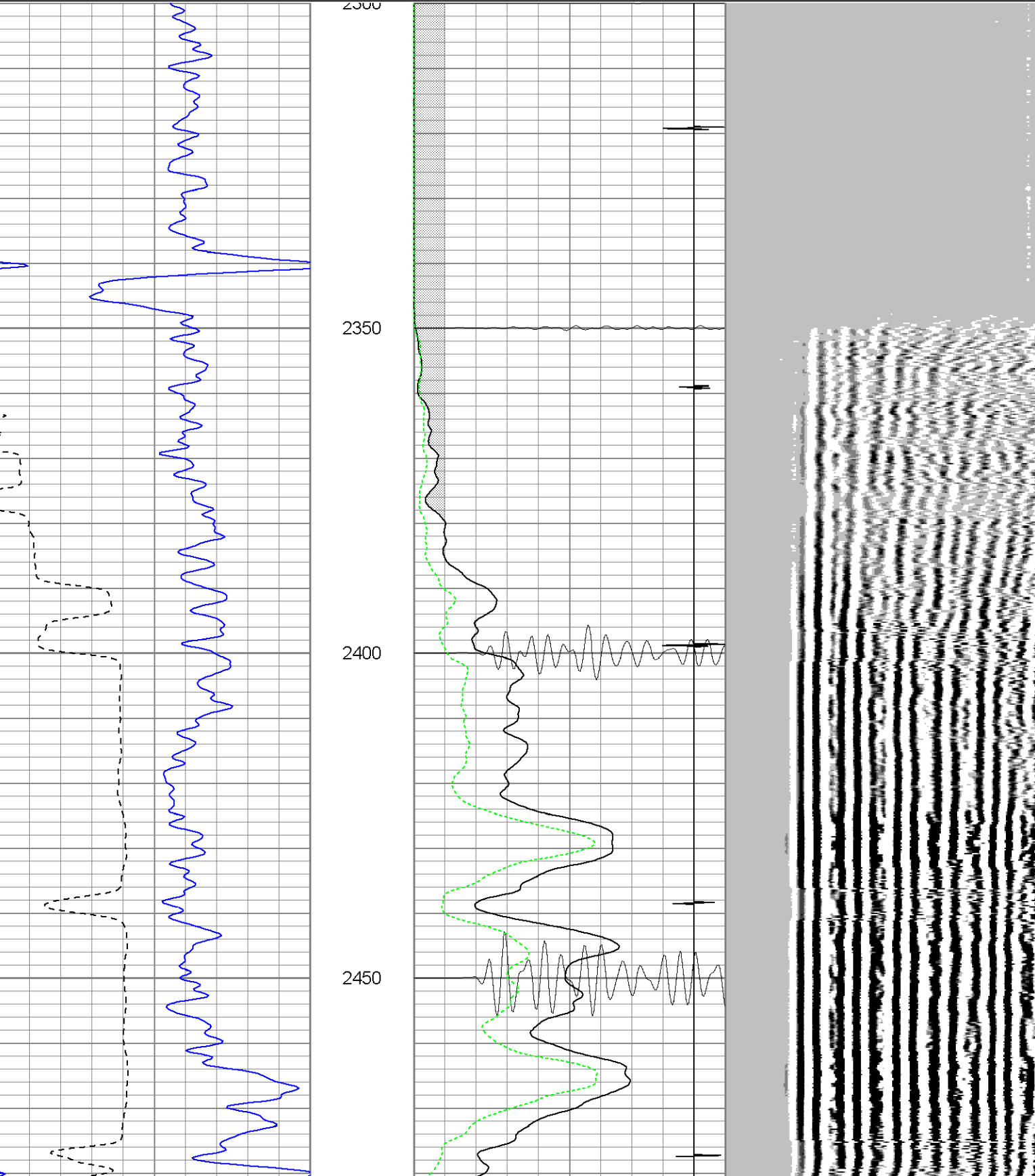
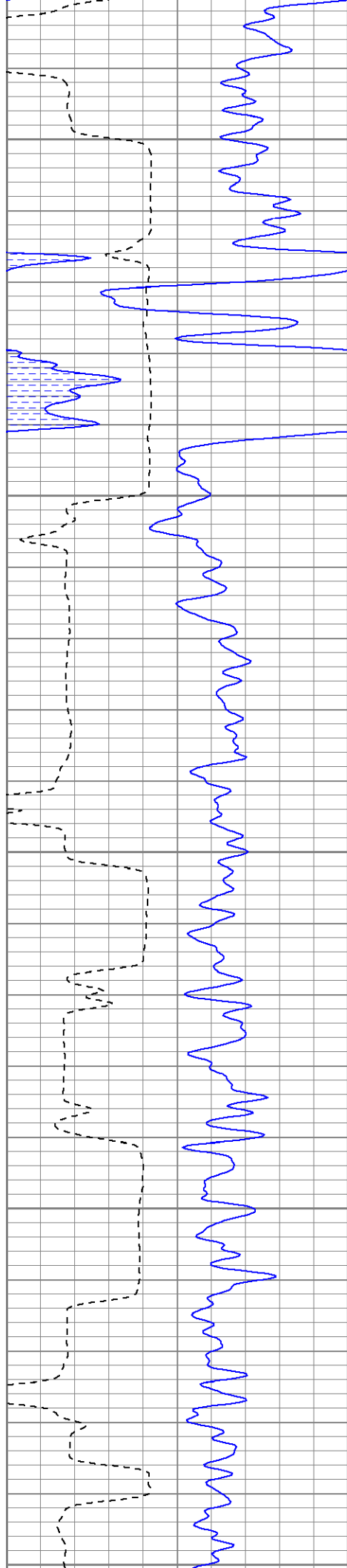


Database File: mcombsno5022309b.db
Dataset Pathname: MERGE2
Presentation Format: cblrt
Dataset Creation: Tue Feb 24 09:42:01 2009
Charted by: Depth in Feet scaled 1:240

0	GR (GAPI)	200	0	AMP3 (mV)	100	200	Variable Density	1200
400	TT3 (usec)	200	18	CCL	-2			
			200	CBL5	1200			
			0	AMP5 (mV)	100			





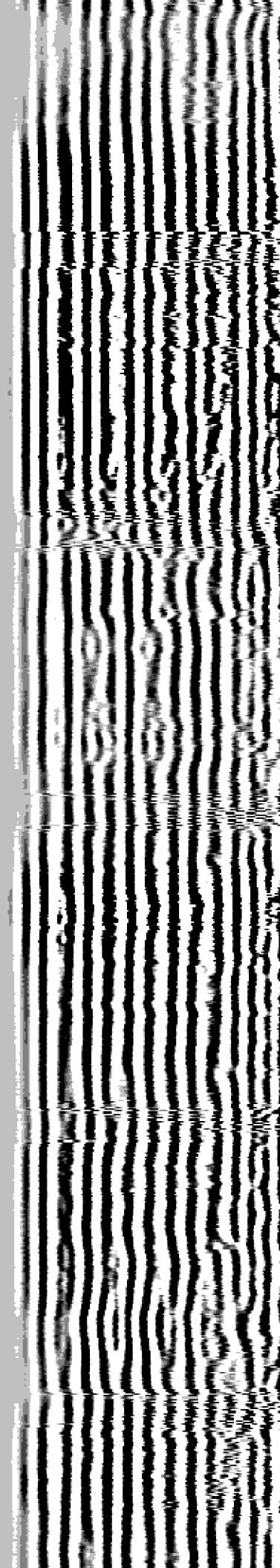
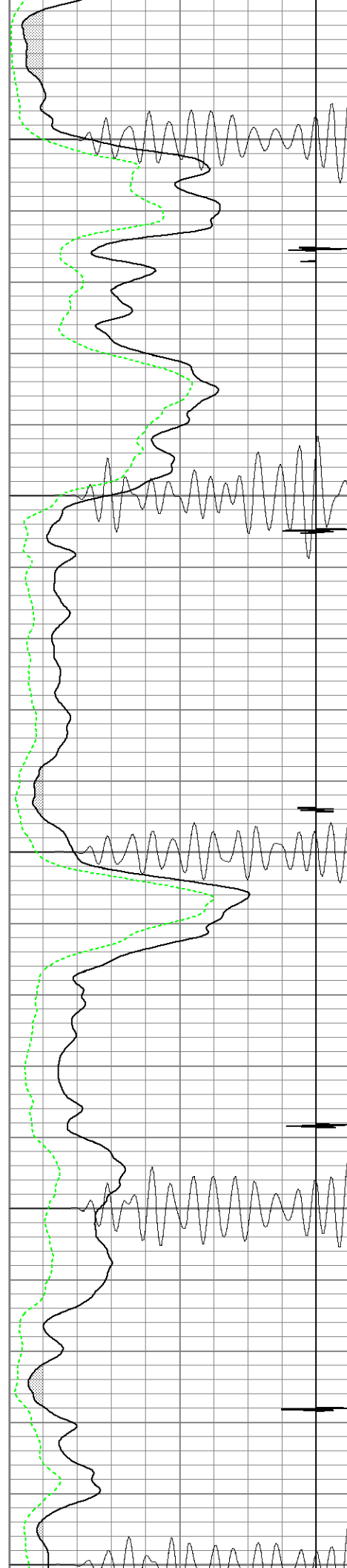
2500

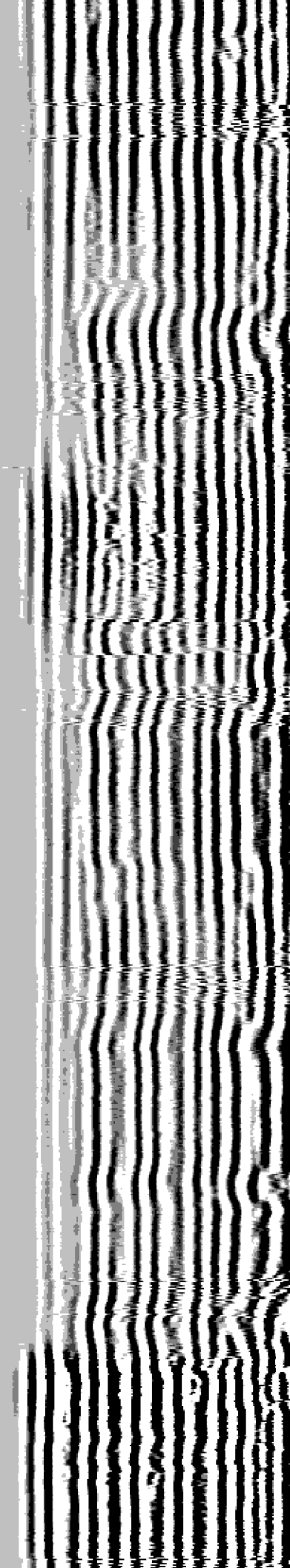
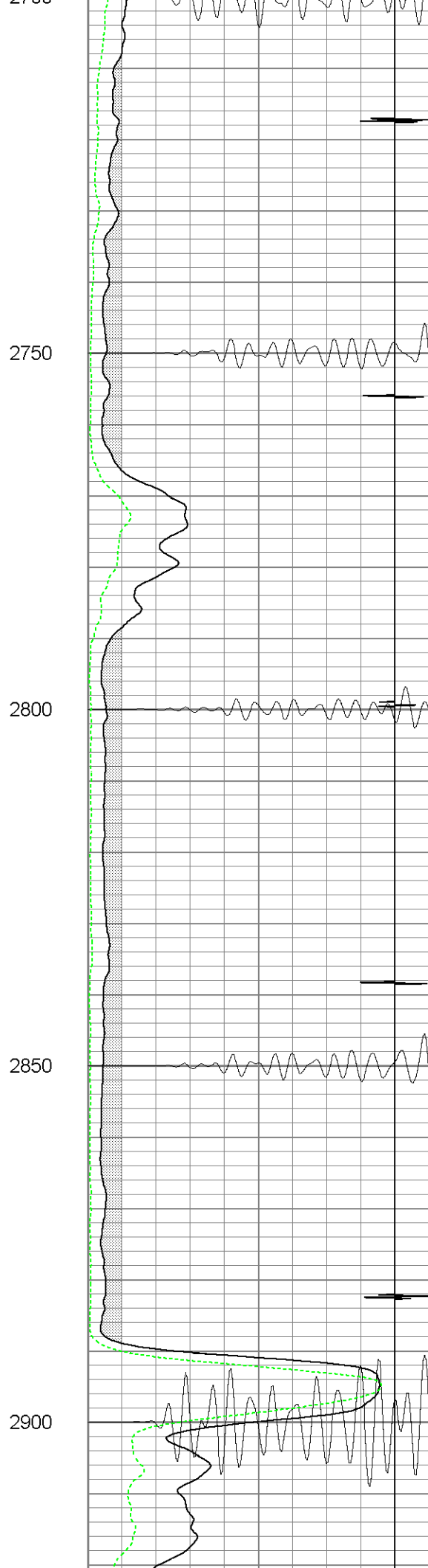
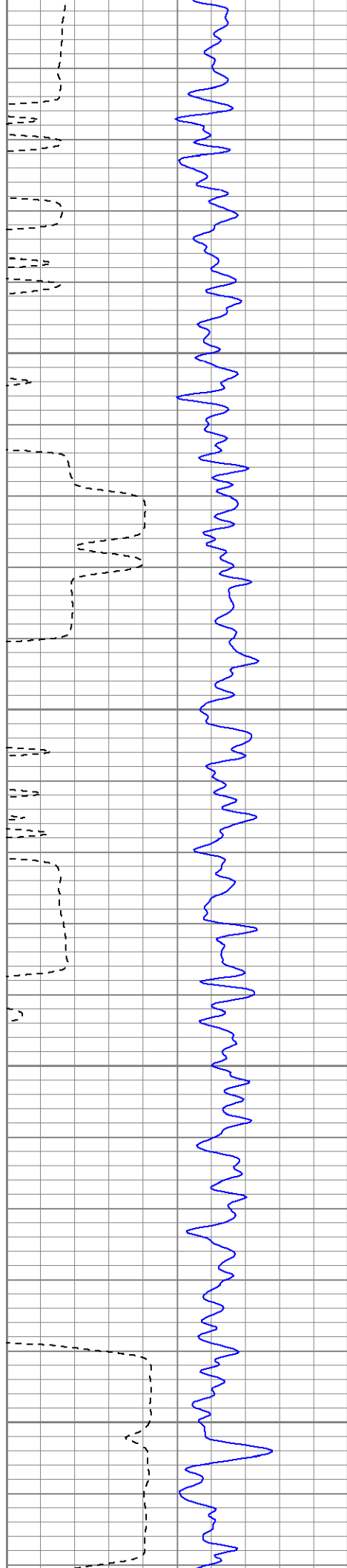
2550

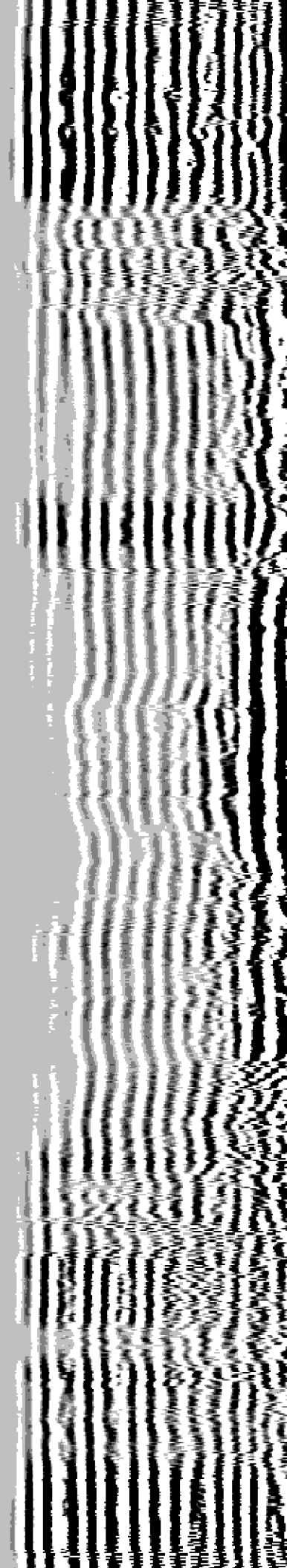
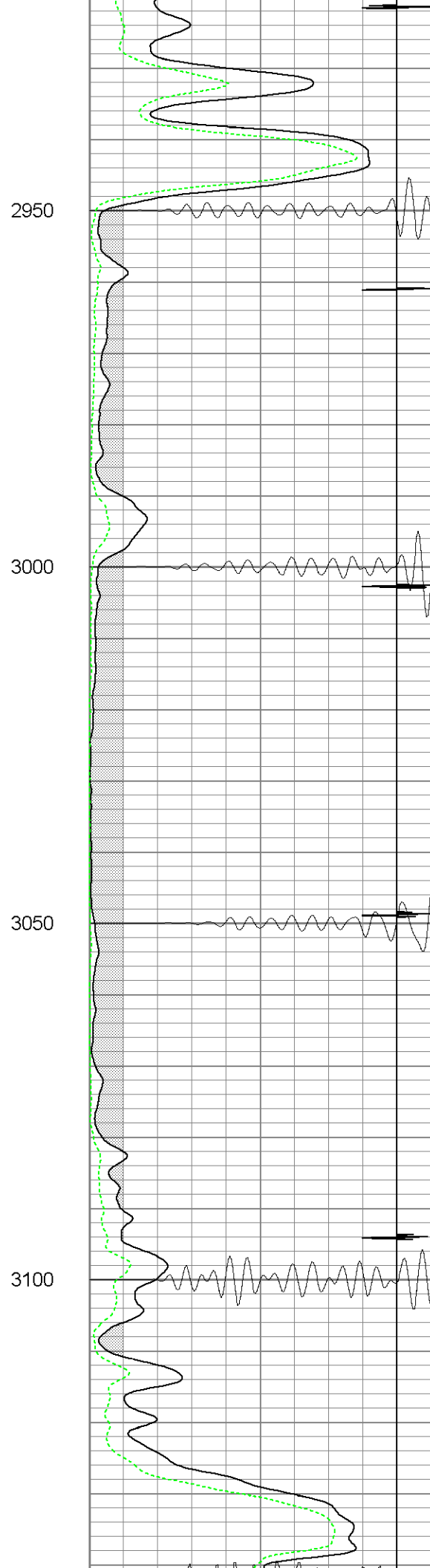
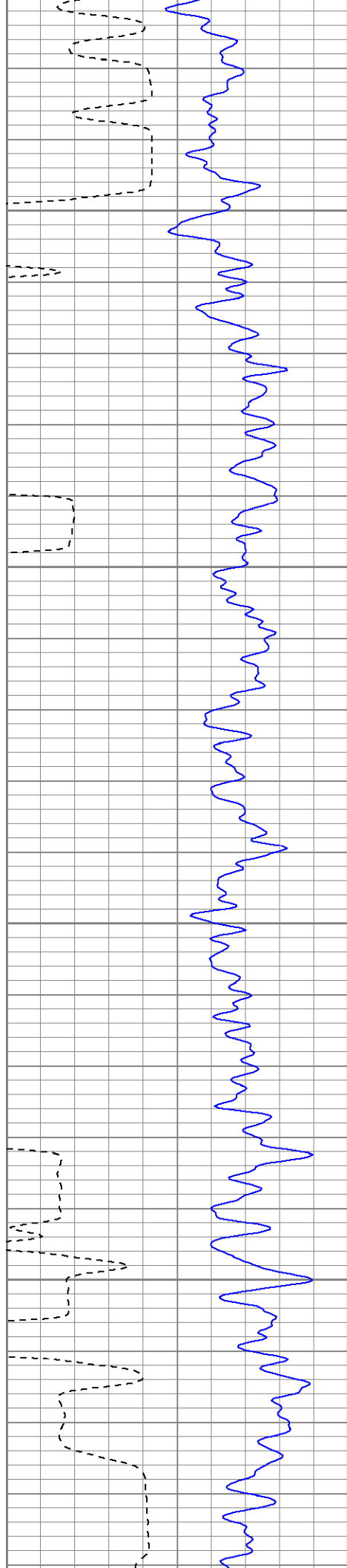
2600

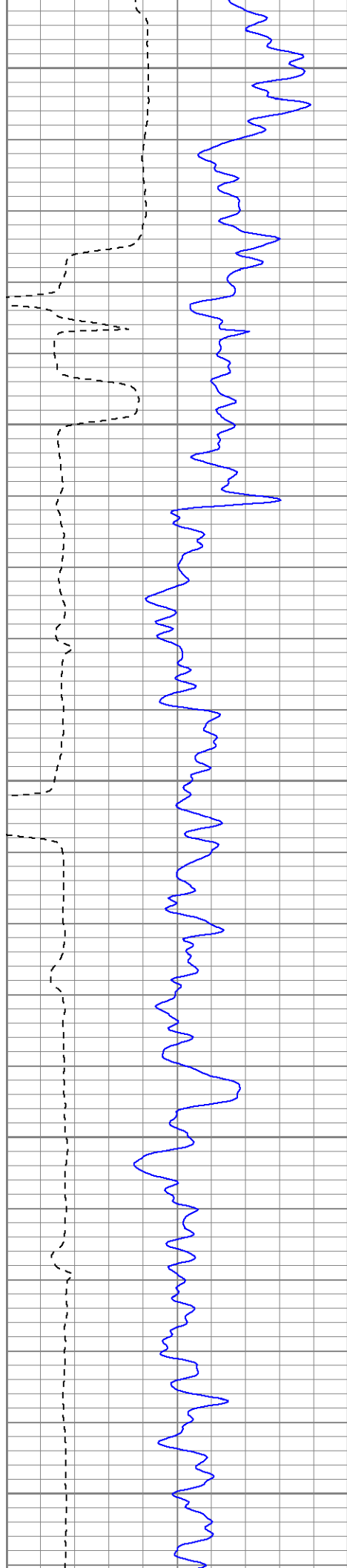
2650

2700









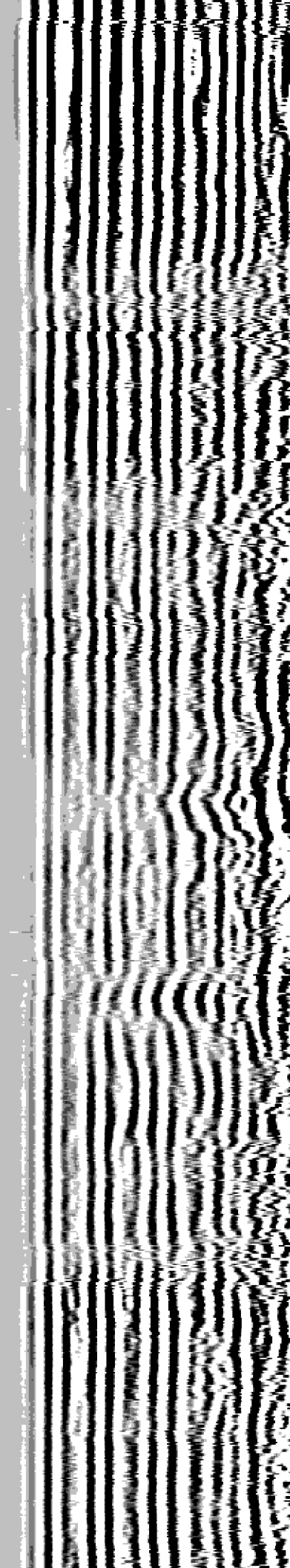
3150

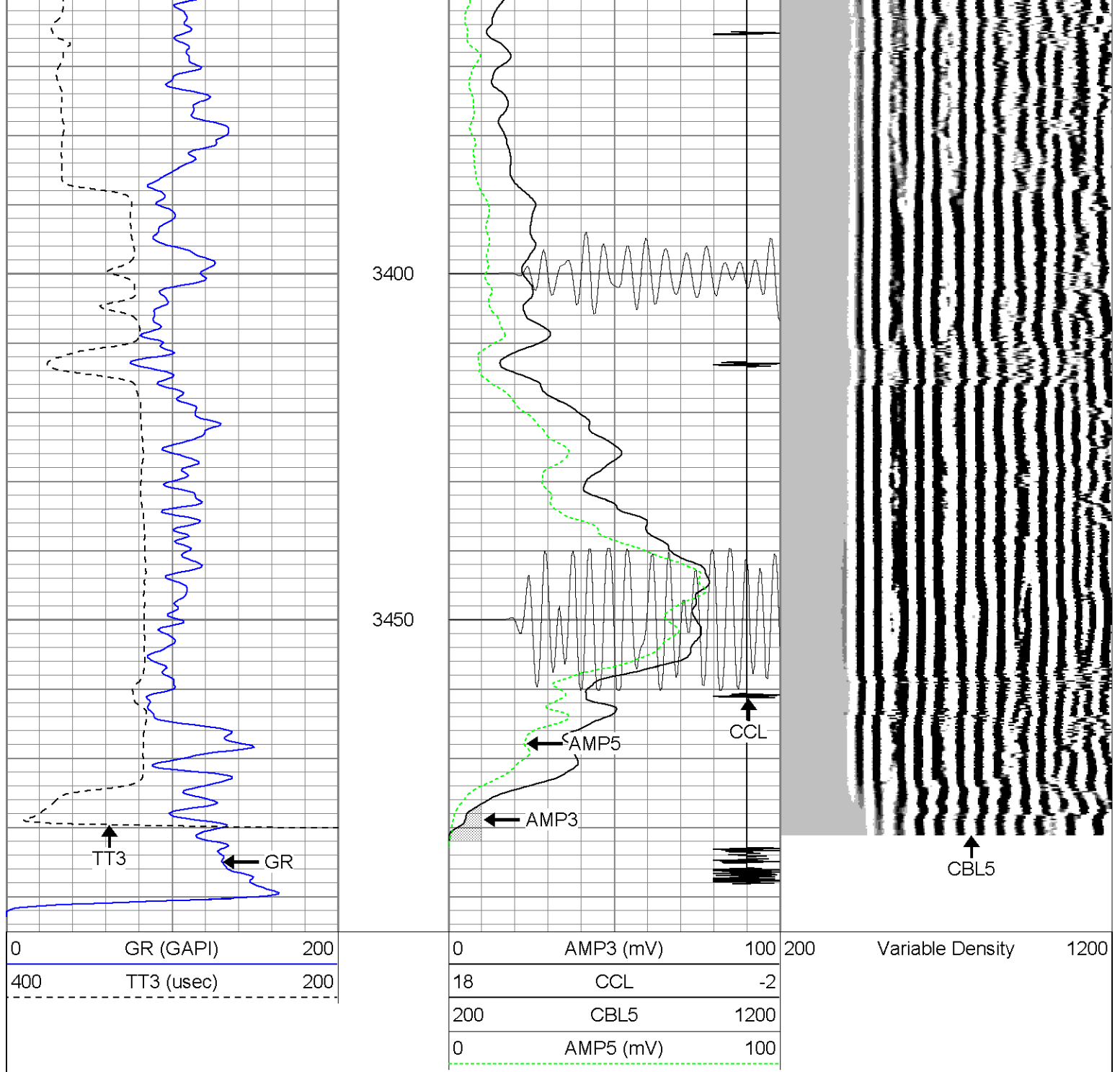
3200

3250

3300

3350





Calibration Report

Database File: mcombsno5022309b.db
 Dataset Pathname: pass4.2
 Dataset Creation: Mon Feb 23 17:01:07 2009 by Calc Open-Cased 071220

Gamma Ray Calibration Report

Serial Number:	080351	
Tool Model:	275D_INC	
Performed:	Fri Feb 20 10:47:57 2009	
Calibrator Value:	200.0	GAPI
Background Reading:	50.0	cps
Calibrator Reading:	270.0	cps
Sensitivity:	0.9091	GAPI/cps


Inclinometer Calibration Report

Performed:	Fri Feb 20 10:47:59 2009				
	Low Read.	High Read.	Low Ref.	High Ref.	
X Accelerometer	-3577.20	3614.20	-1.00	1.00	gee
Y Accelerometer	-3610.20	3537.20	-1.00	1.00	gee
Z Accelerometer					

Cement Bond Log Calibration Report

Serial Number:	081023			
Tool Model:	PROBEDIGITALCBL			
Performed:	Fri Feb 20 10:47:51 2009			
Depth:	97.525	ft		
Casing Diameter:	5.5	in		
	3' Spacing	5' Spacing		
Signal Zero:	0	0	mV	
Calibrated Amplitude:	85	85	mV	
Reading at Signal Zero:	-0.00861816	-0.00881348	V	
Reading in Free Pipe:	2.15	2.05	V	
Gain:	39.377	41.2859		
Offset:	0.339358	0.363873		

Sensor	Offset (ft)	Schematic	Description	Len (ft)	OD (in)	Wt (lb)
			None	0.75	1.50	5.00
			X	3.00	3.00	25.00
WVF3	14.75		CBLPROBE-PROBEDIGITALCBL (081023)	238.75	2.75	106.50
WVF5	13.75		PROBE DIGITAL CBL			
			X	3.00	3.00	25.00
CCL	6.50		GR-275D_INC (080351)	4.50	2.75	50.00
ACCX	4.83		2-3/4" GR-CCL with Inclination			
ACCY	4.83					
ACCZ	4.83					
GR	3.83		X	3.00	3.00	25.00

					
<div><div>Dataset:</div><div>Total Length:</div><div>Total Weight:</div><div>O.D.</div></div> <div><div>mccombsno5022309b.db: field/well/run1/pass4.2</div><div>23.00 ft</div><div>236.50 lb</div><div>3.00 in</div></div>					