

DEPTH SCALE: 5":100'

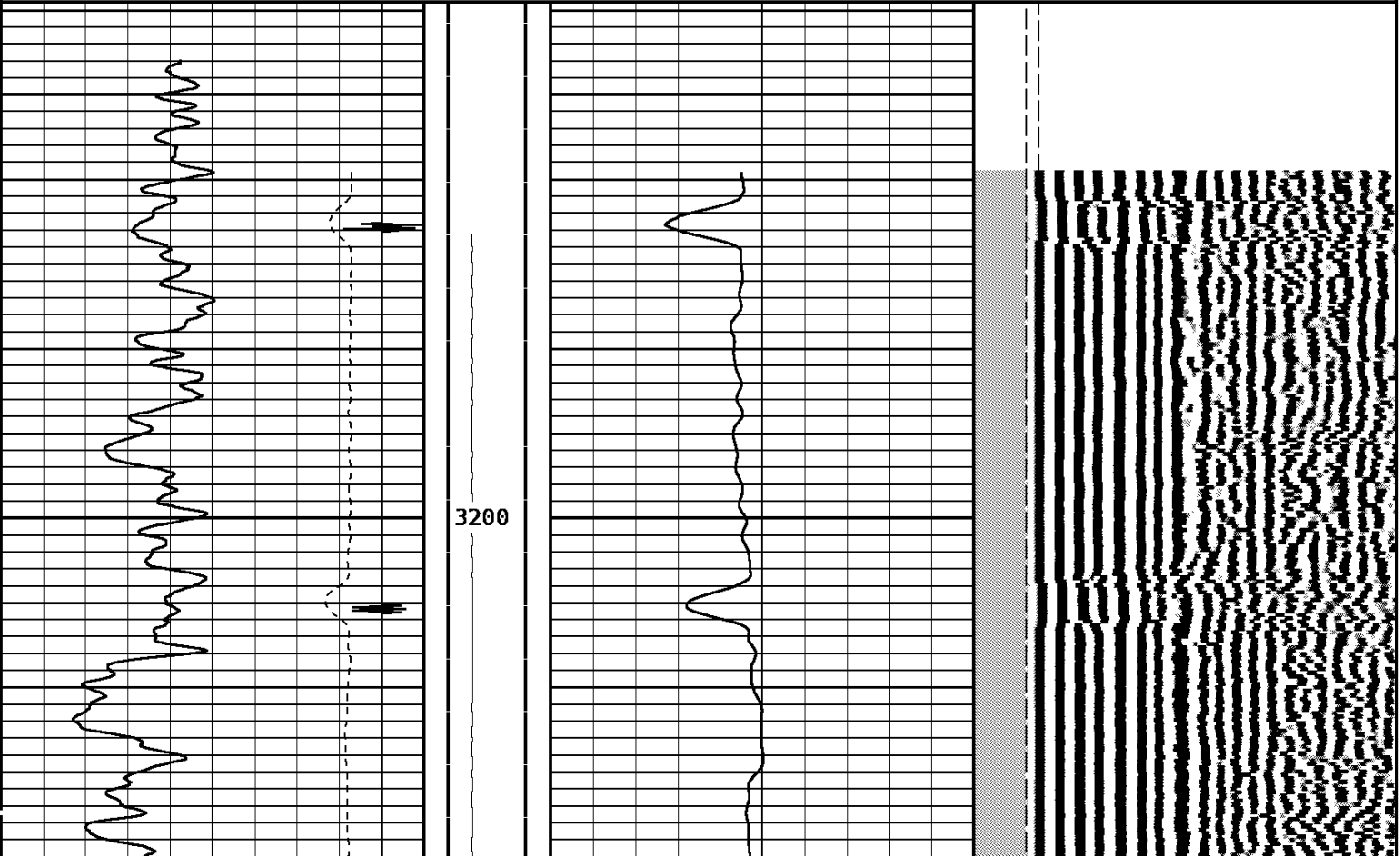
VERSION: 80214133R"

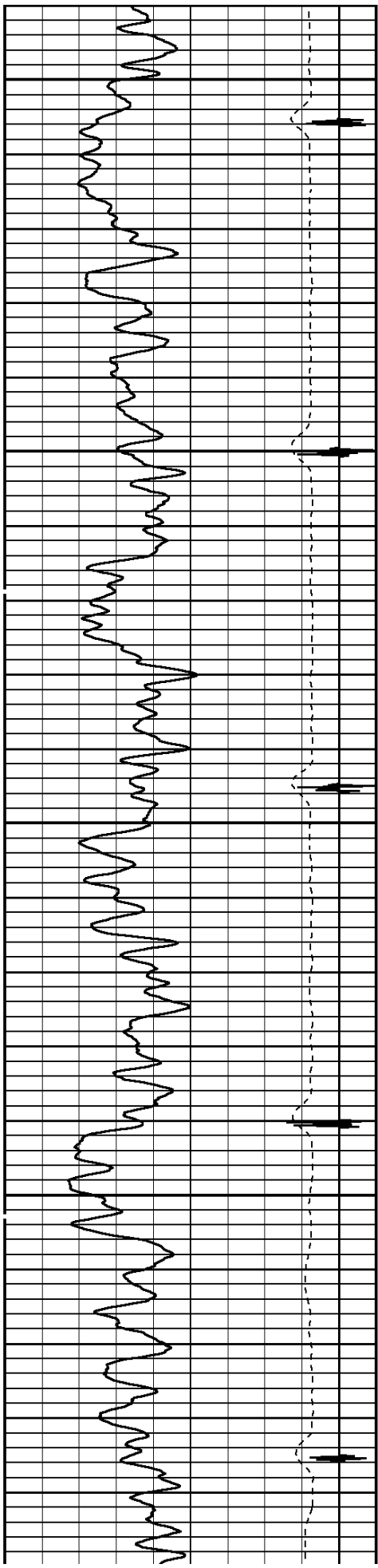
MERGED PASS

153110 cblmainadj

FINISH DEPTH: 3139.2 Feet DIRECTION: UP DATE: 12/22/2008 TIME: 09:43 MODE: ORIGINAL

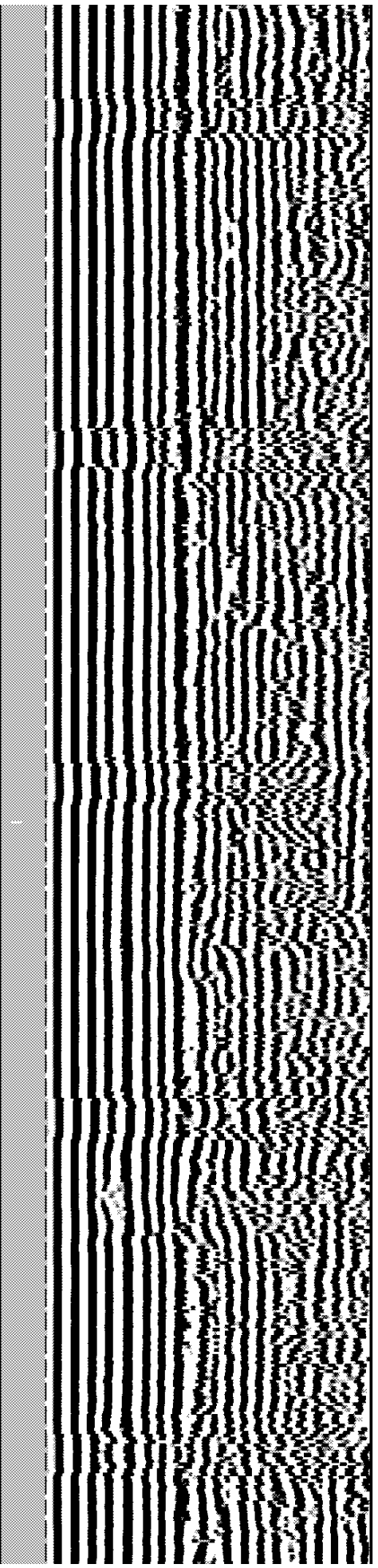
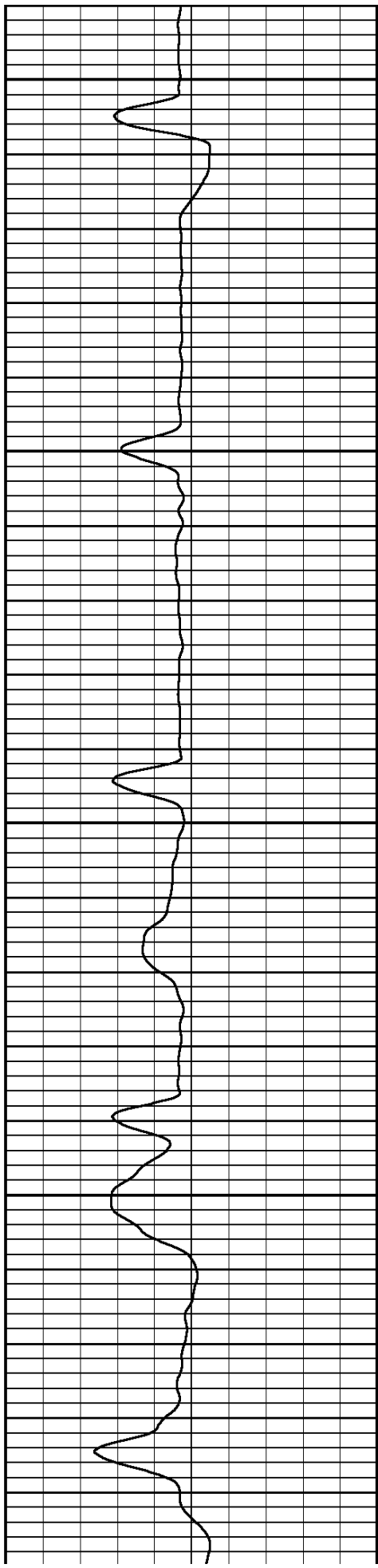
Collar Locator						FREE PIPE GATE		
-8000	Millivolts	880				200	Microseconds	1200
Gamma Ray			AMPLITUDE 3FT X5			FREE PIPE GATE		
0	API	150	0	Millivolts	20	200	Microseconds	1200
TRAVEL TIME 3FT			Tension	AMPLITUDE 3FT		VARIABLE DENSITY 5FT		
310	Microseconds	210	0 2400	0	Millivolts 100	200	Microseconds	1200

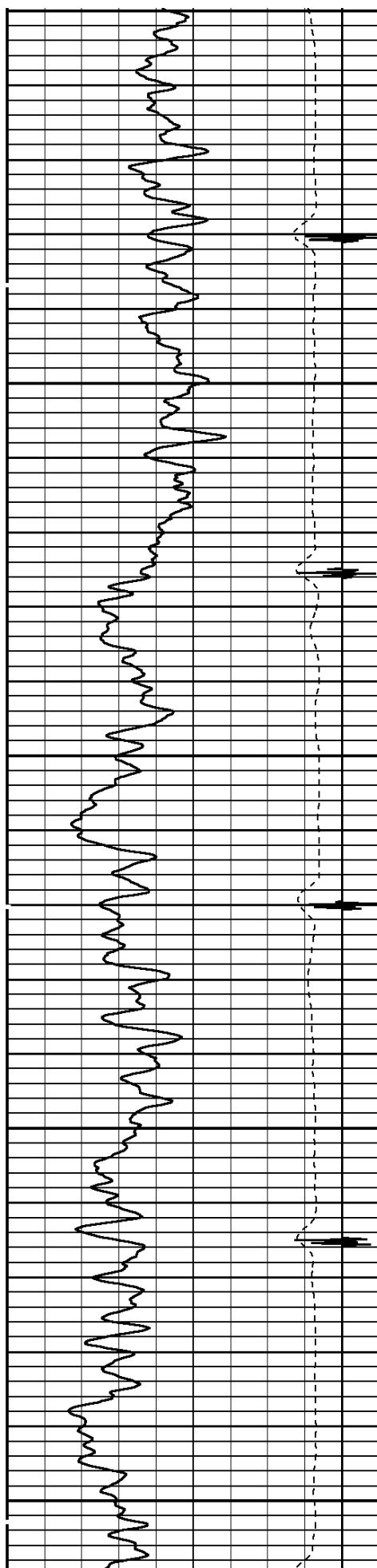




3300

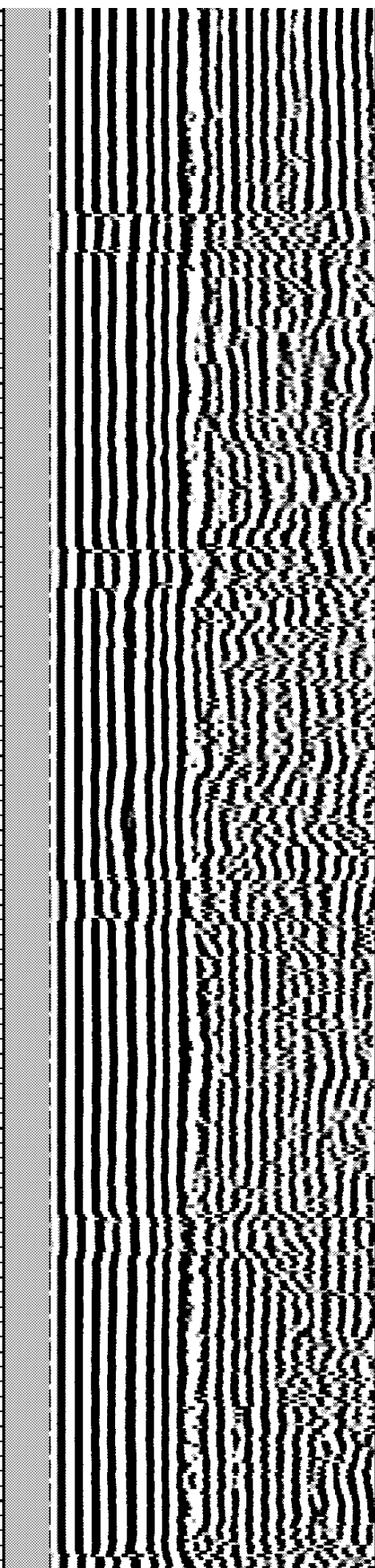
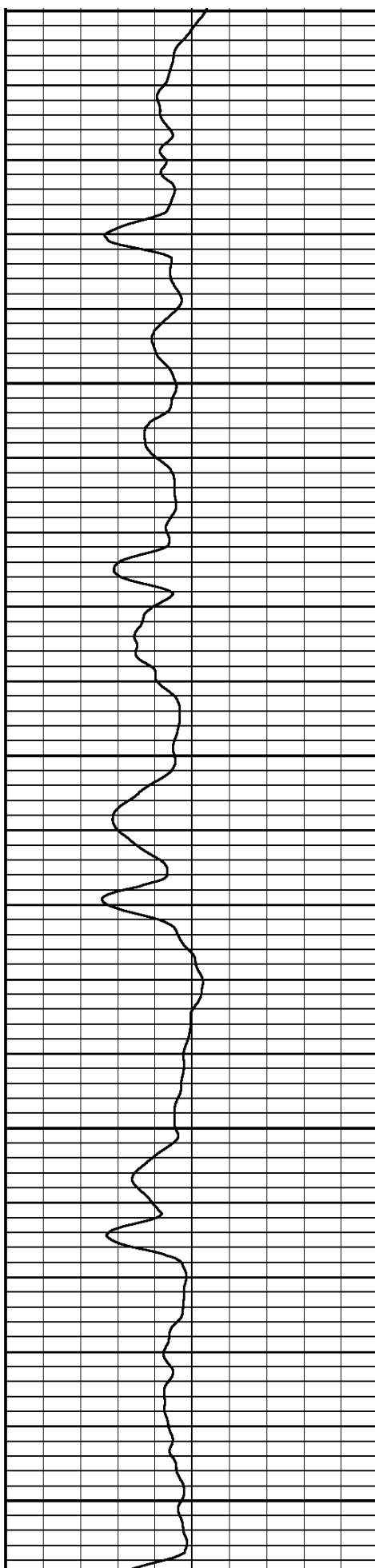
3400

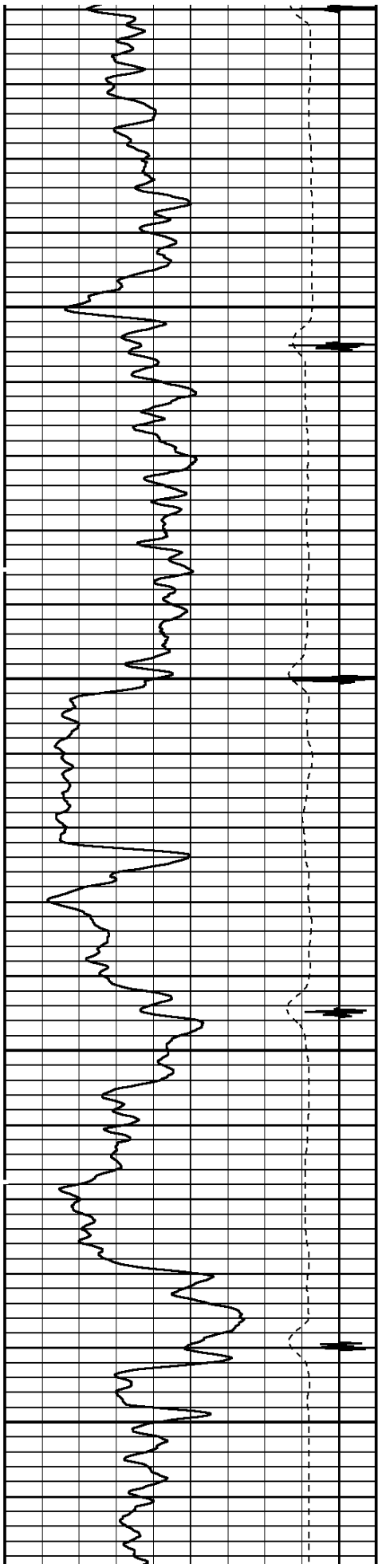




3500

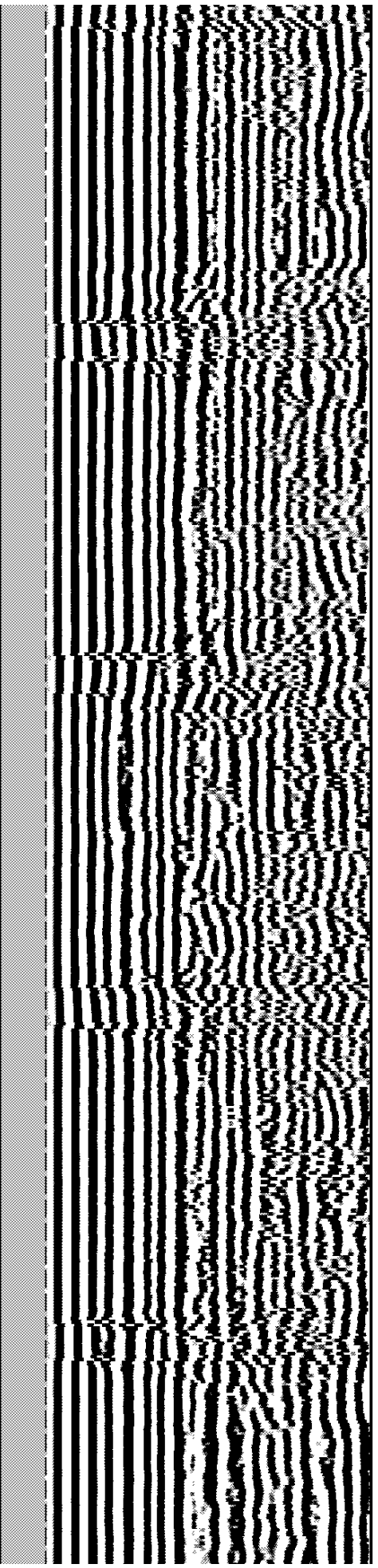
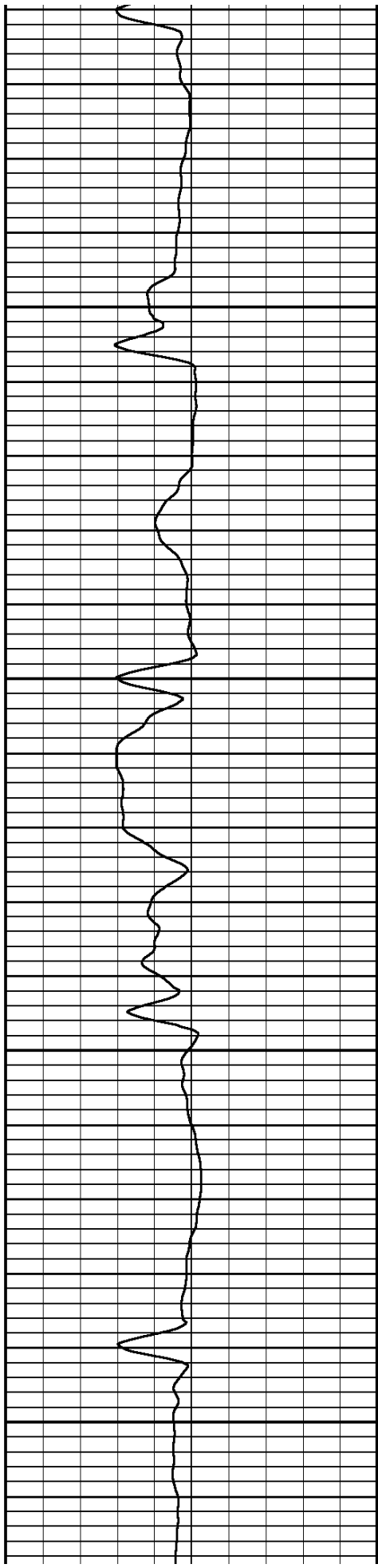
3600

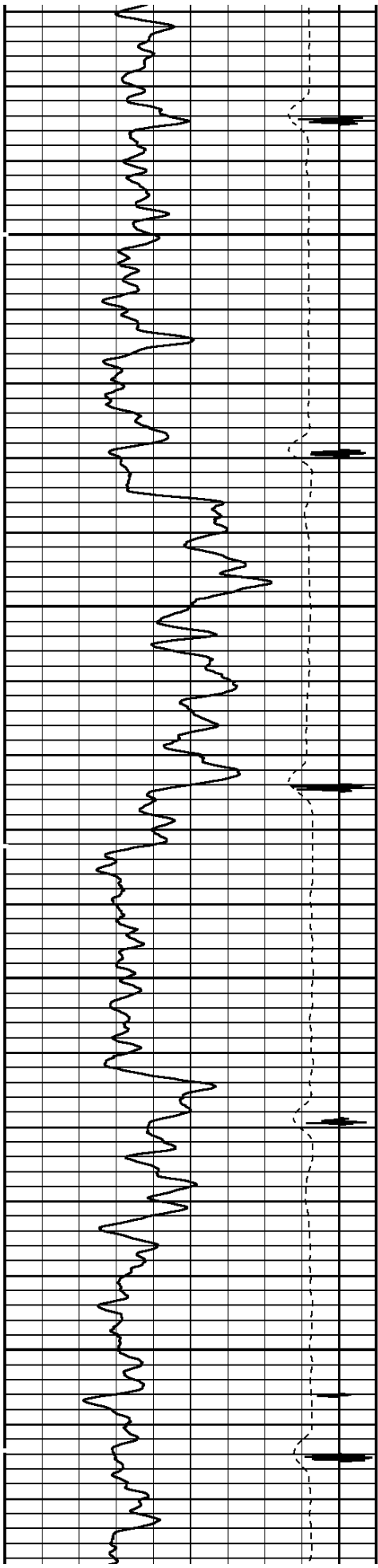




3700

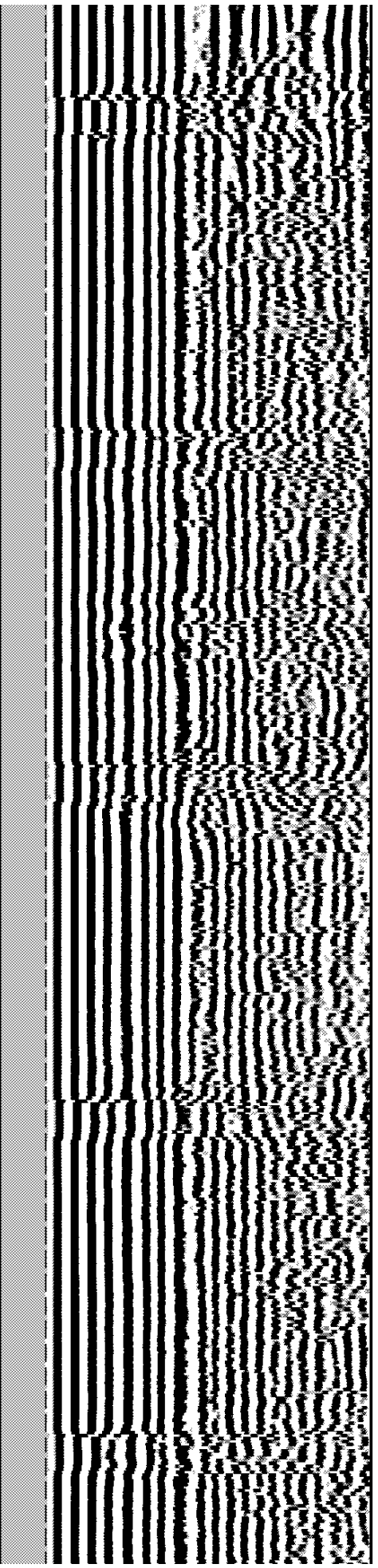
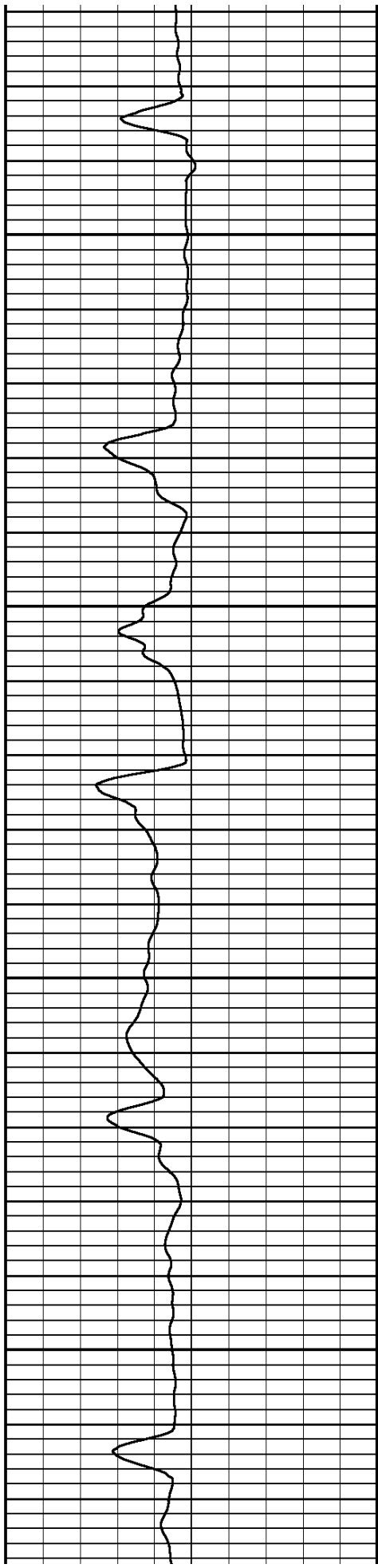
3800

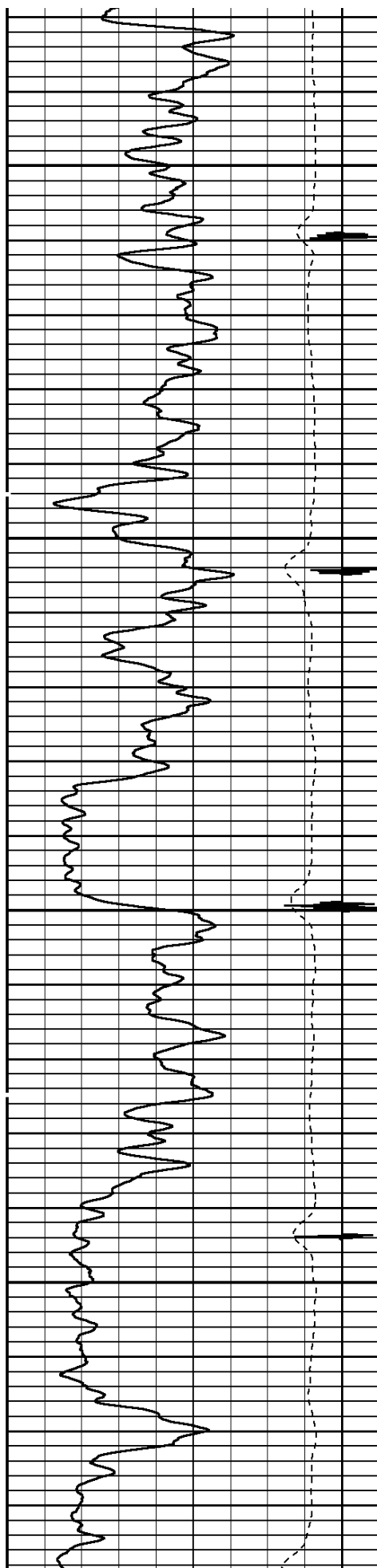




3900

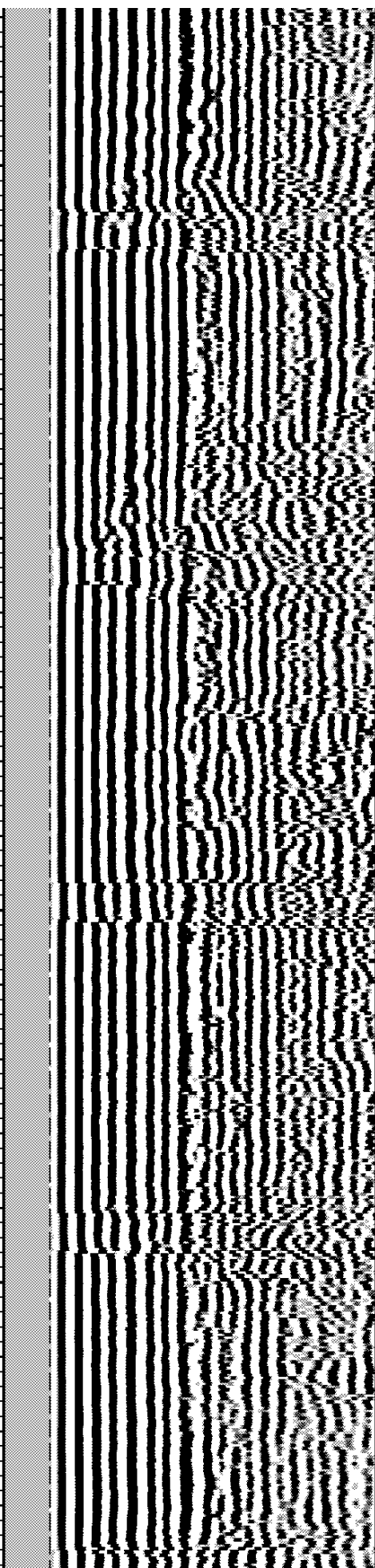
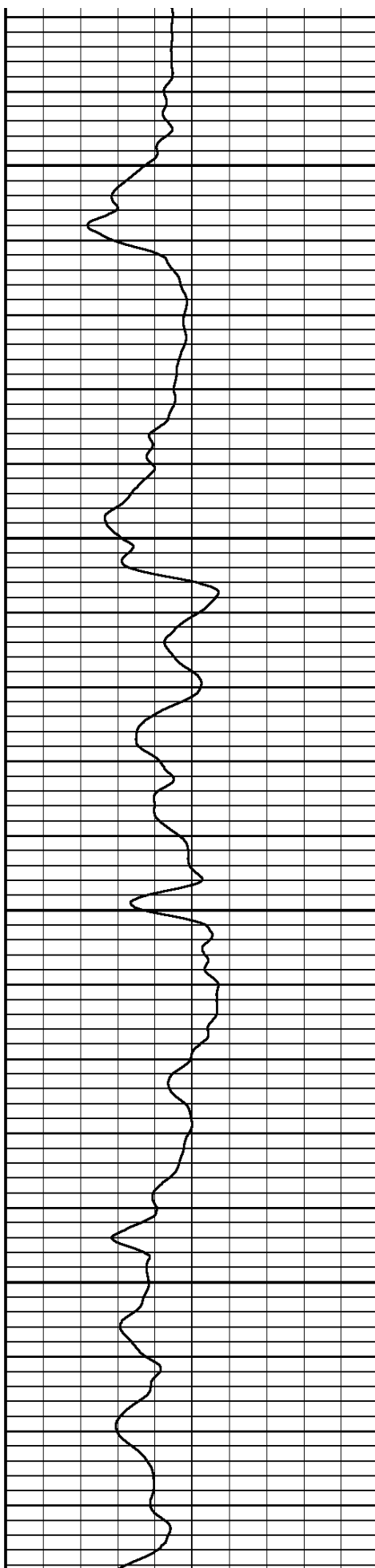
4000

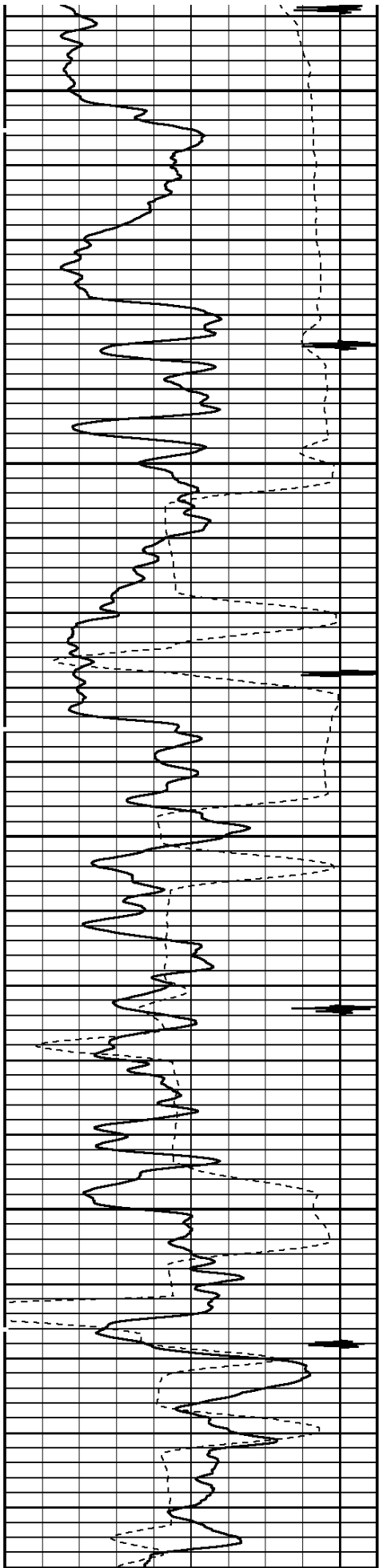




4100

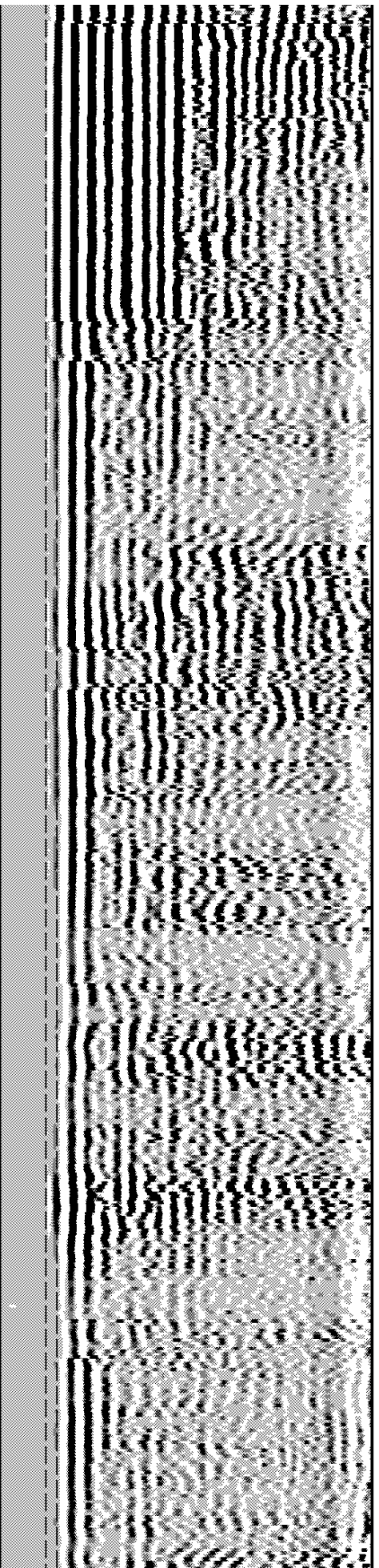
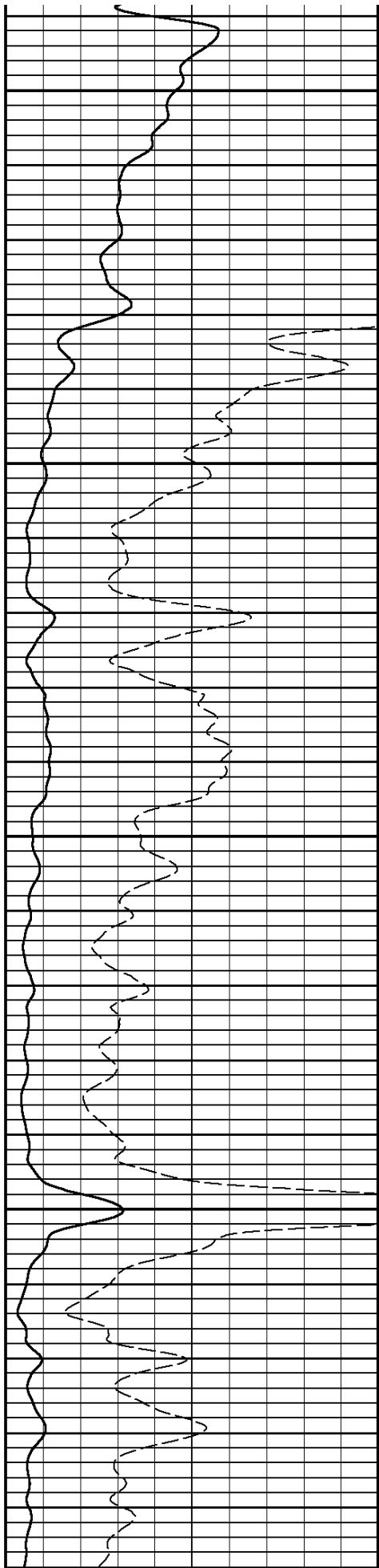
4200

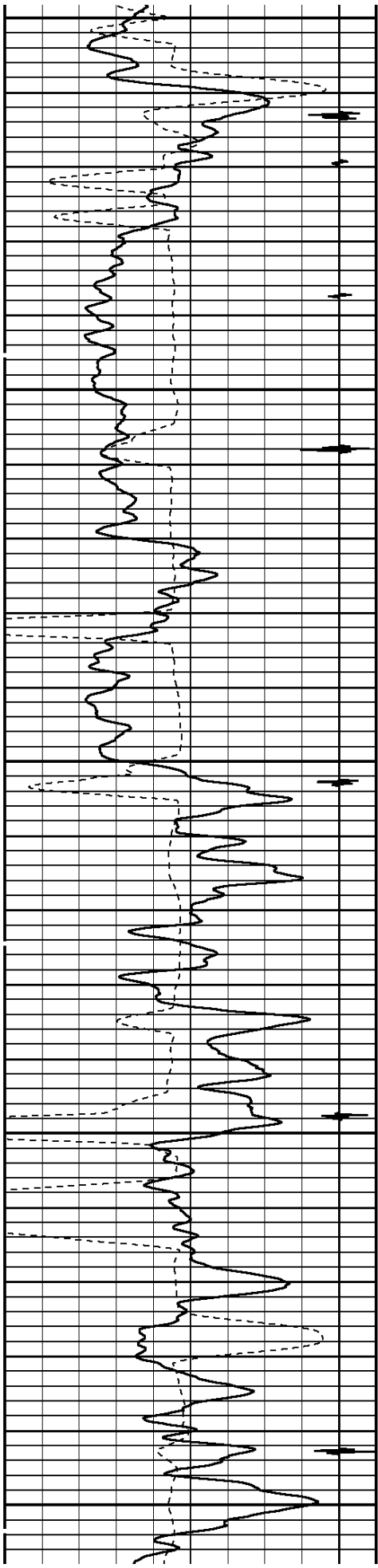




4300

4400

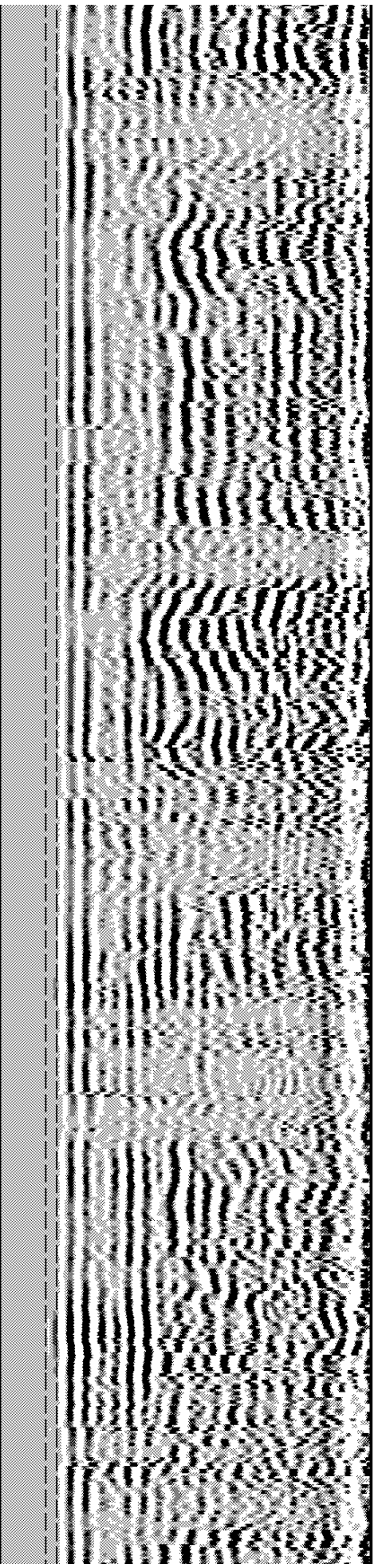
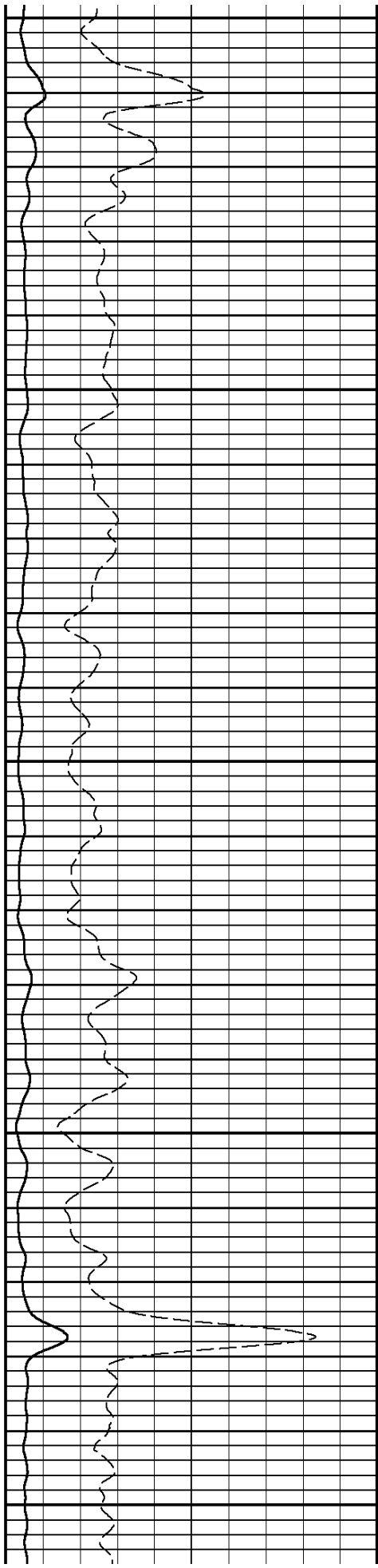


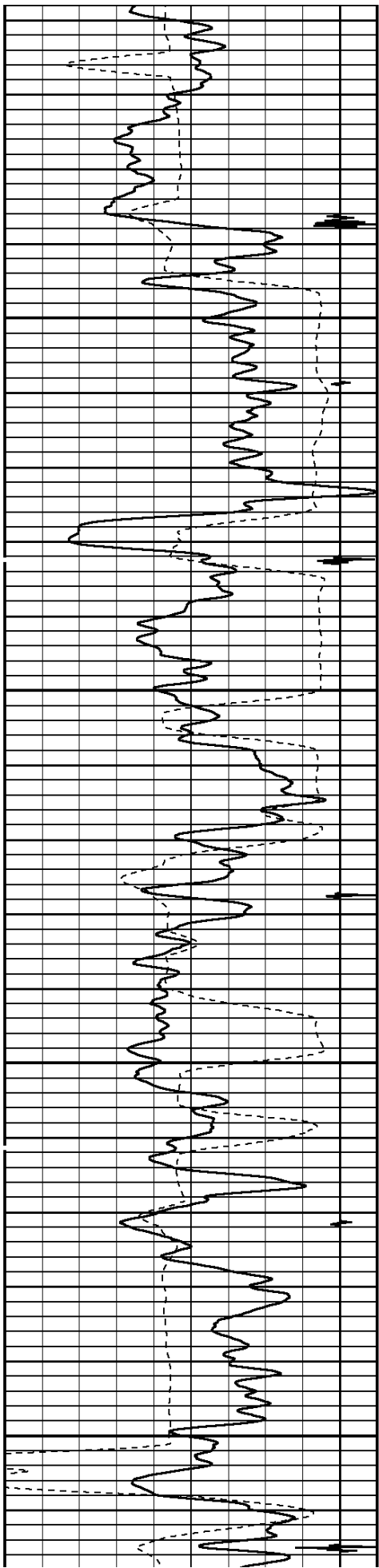


4500

4600

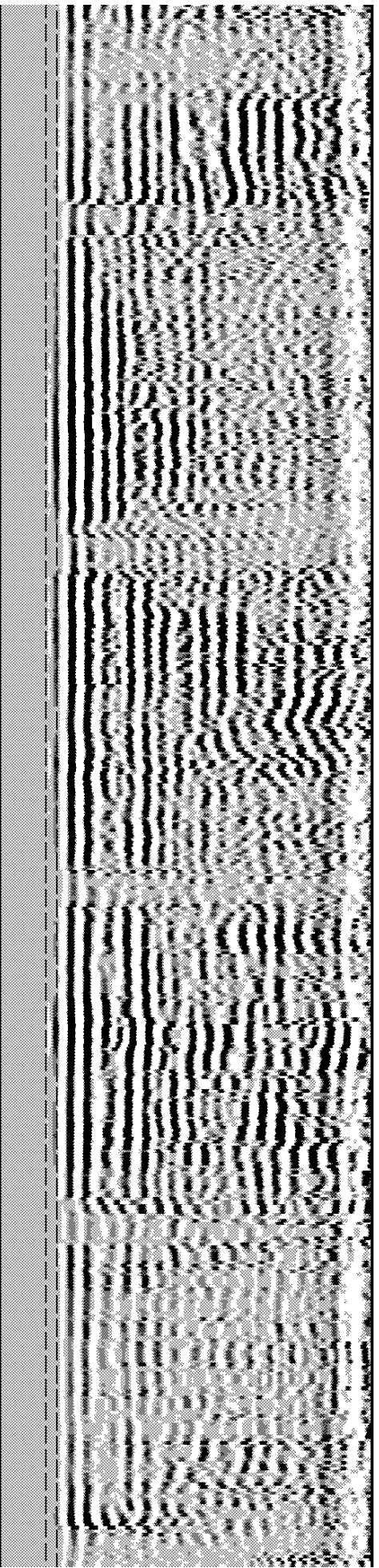
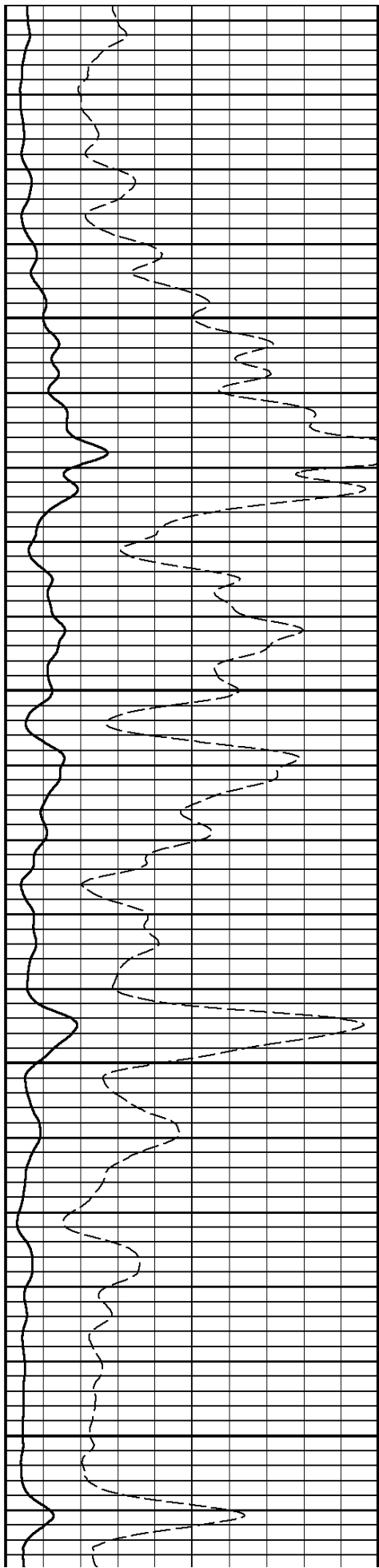
4700

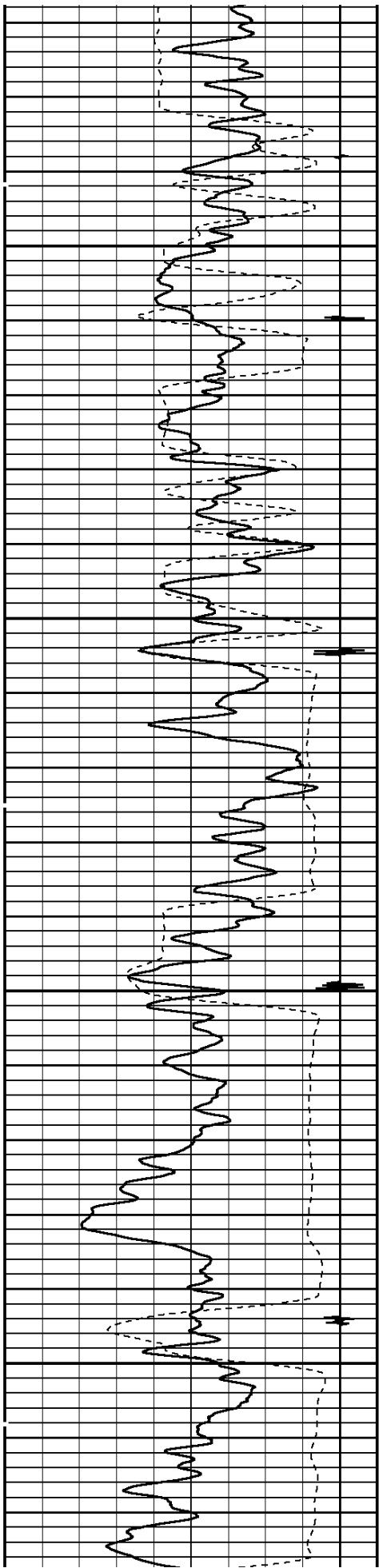




4800

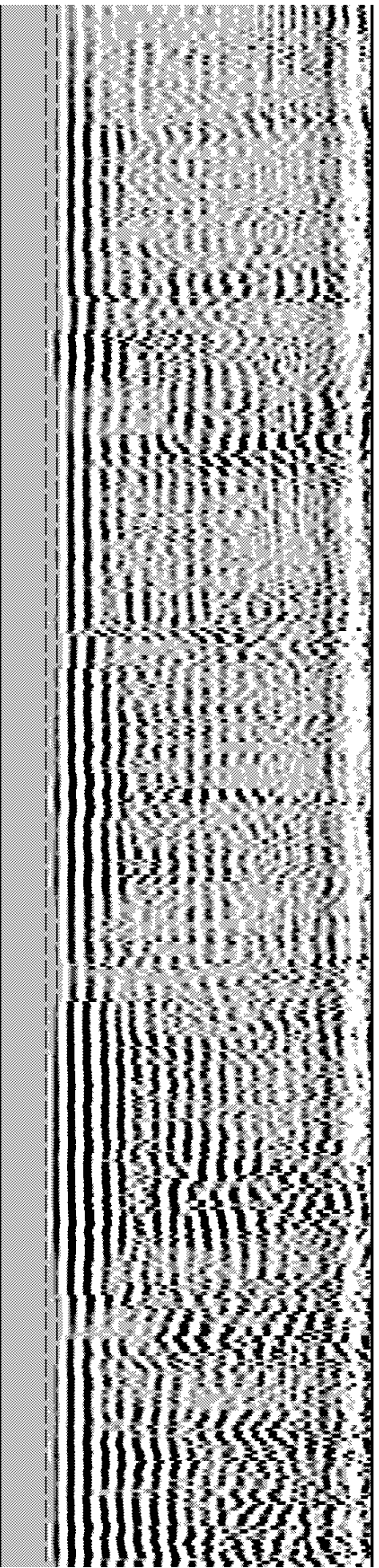
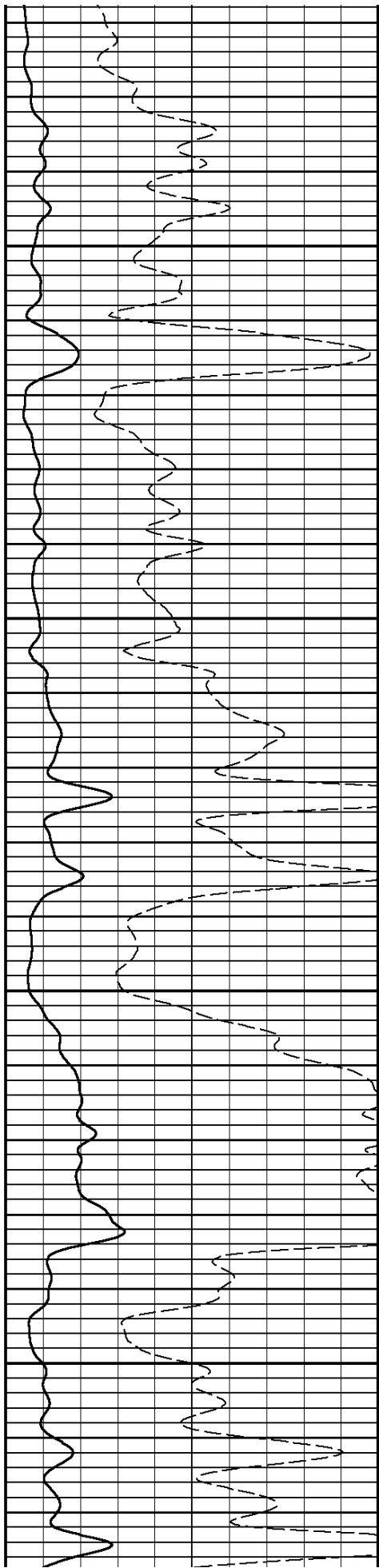
4900

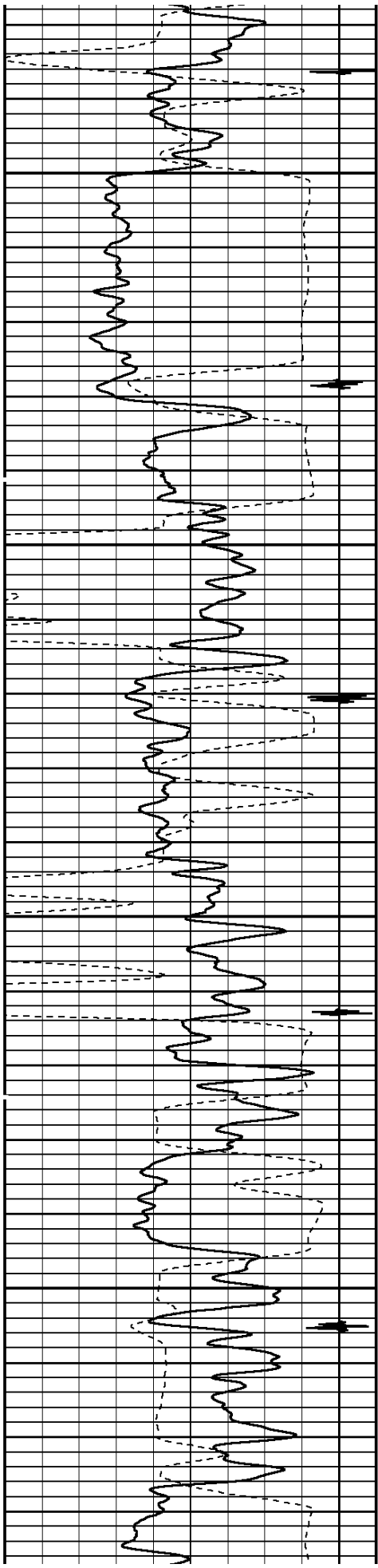




5000

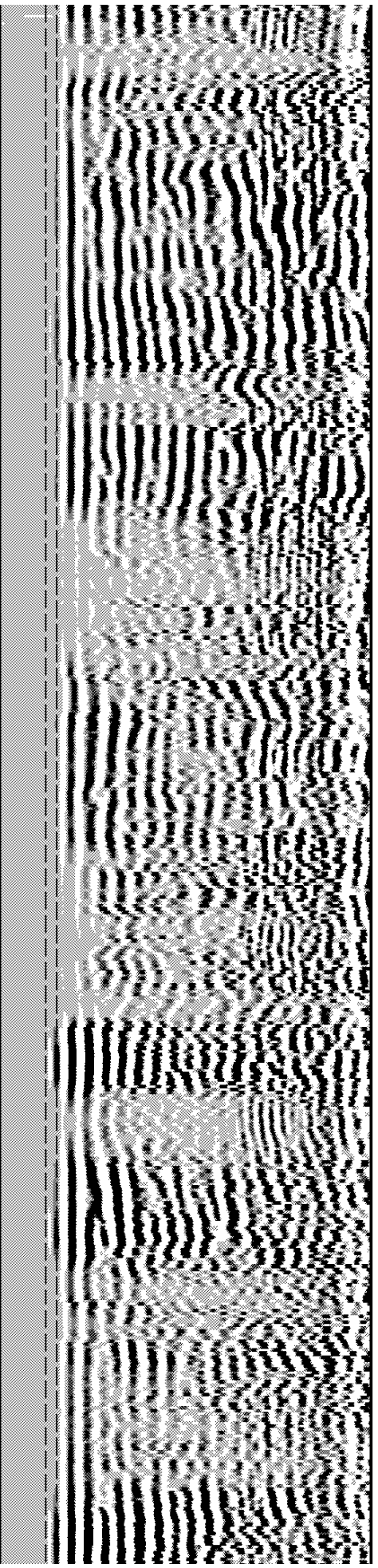
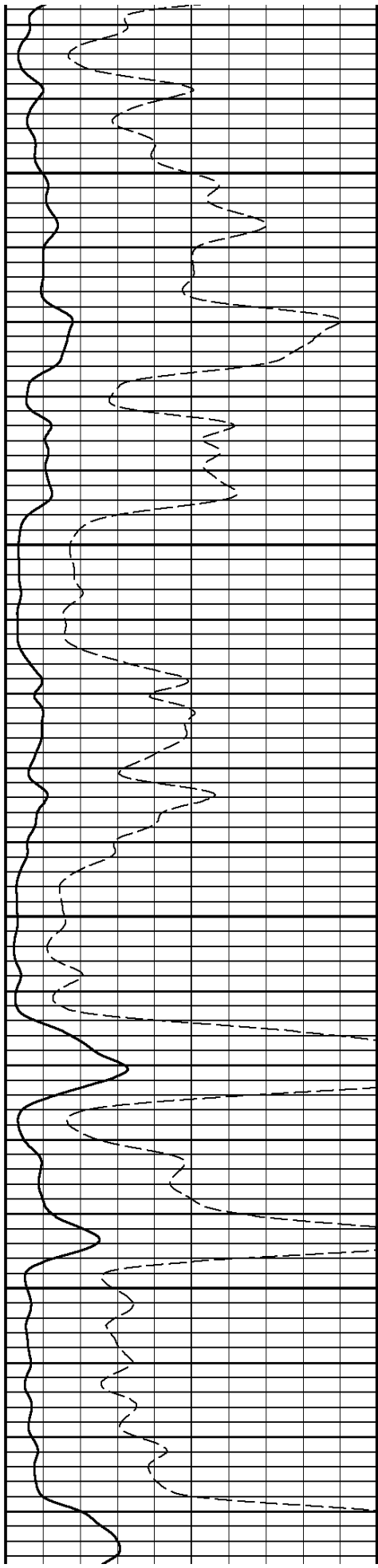
5100

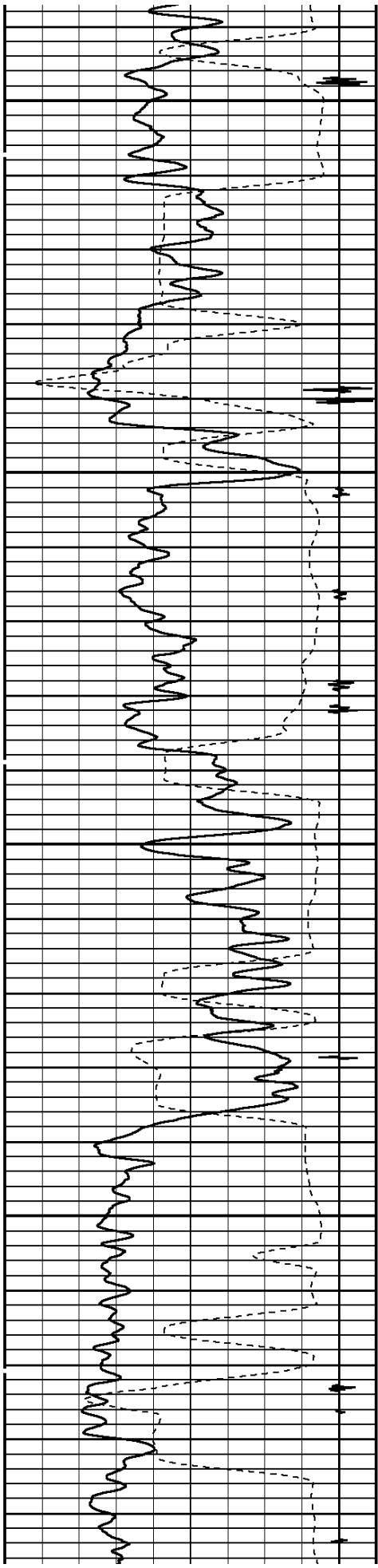




5200

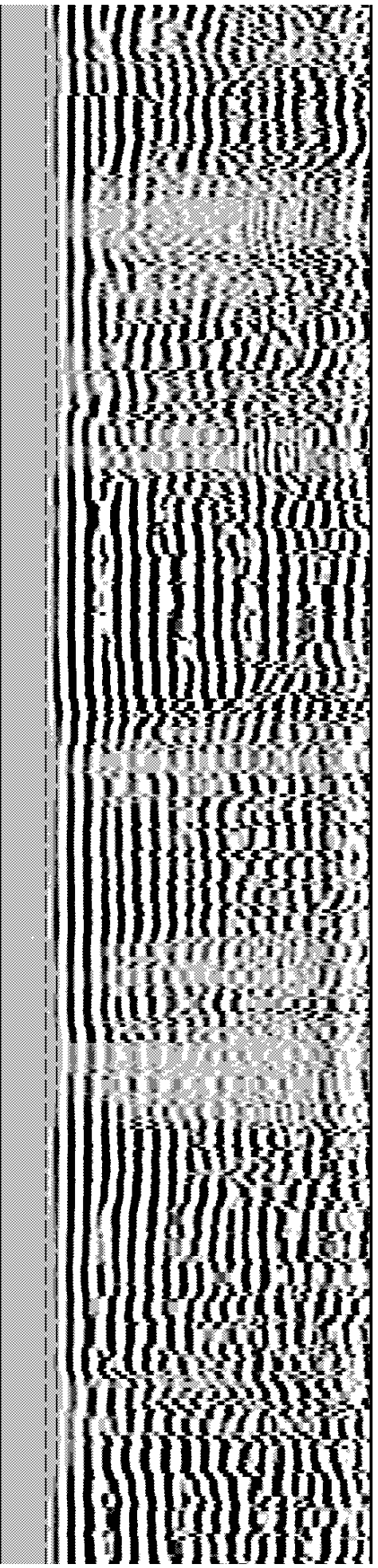
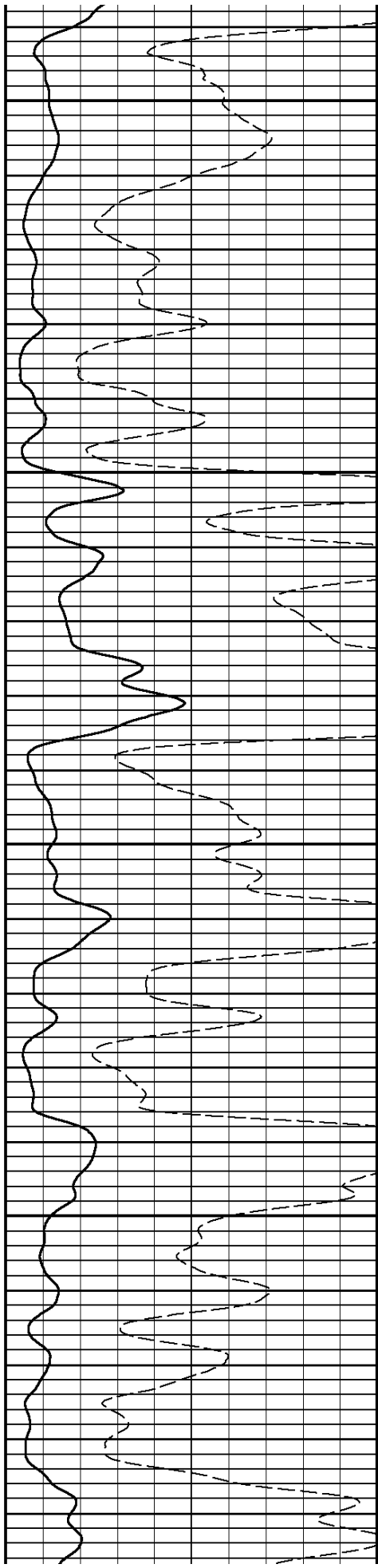
5300

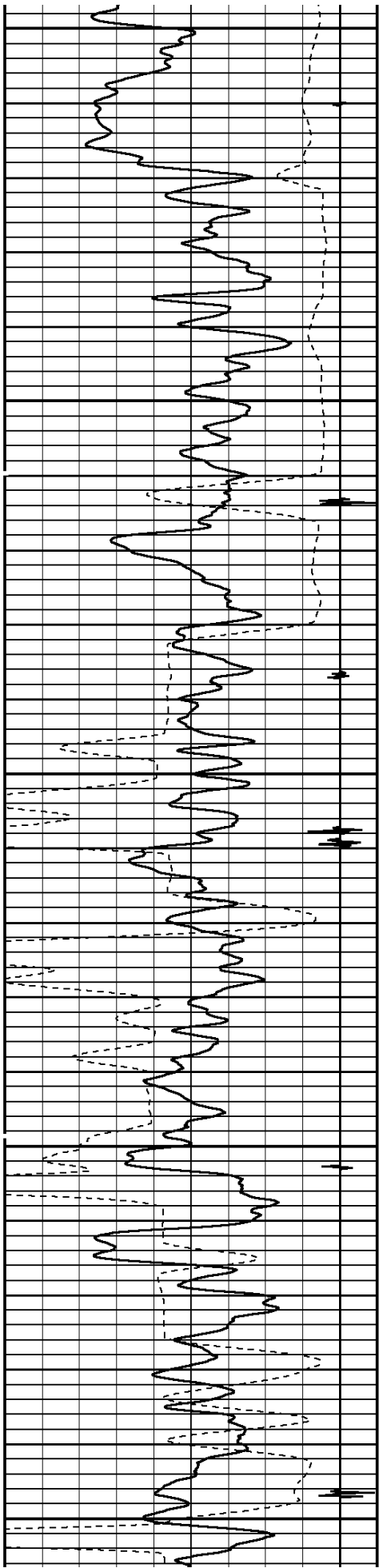




5400

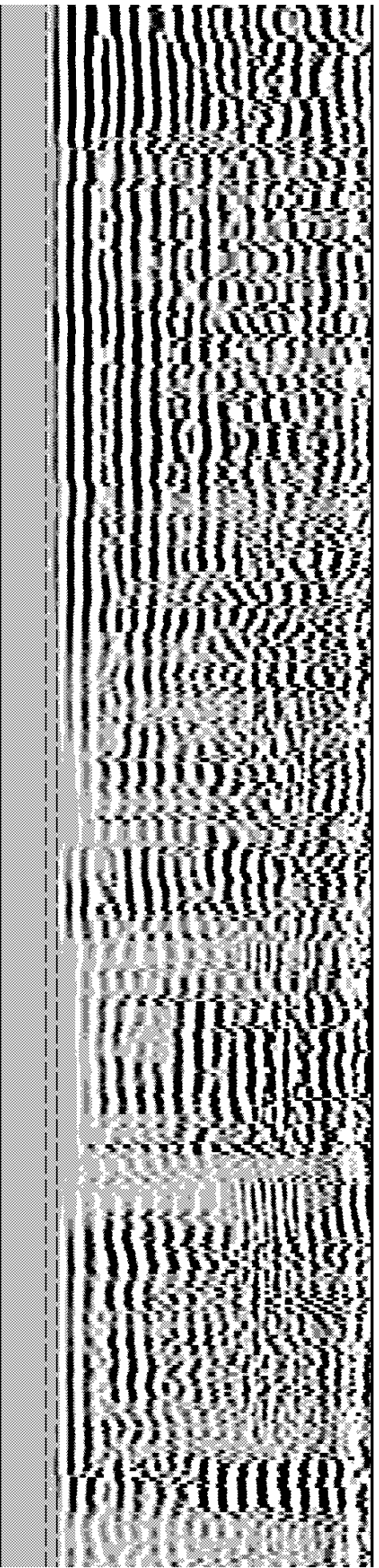
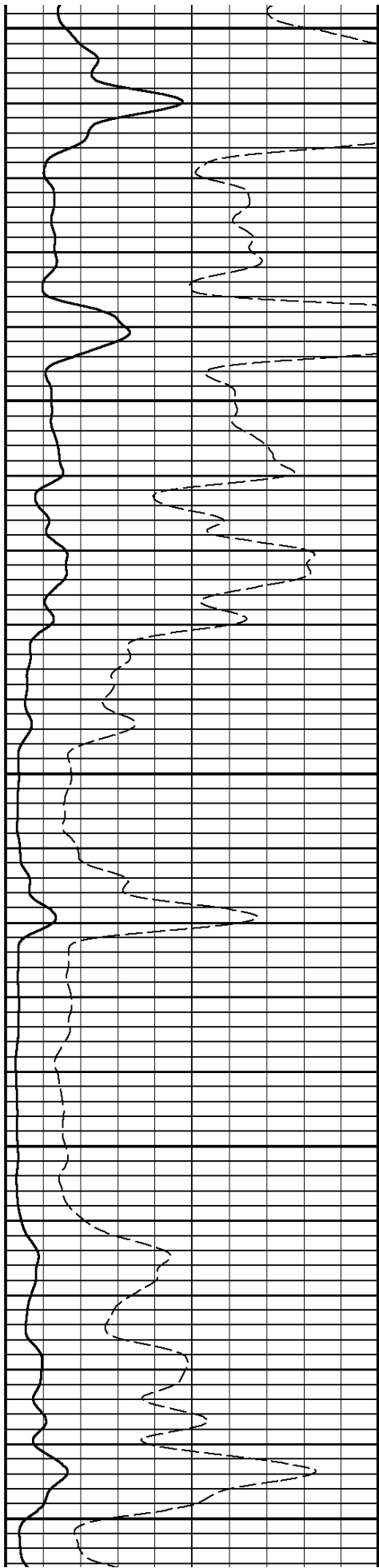
5500

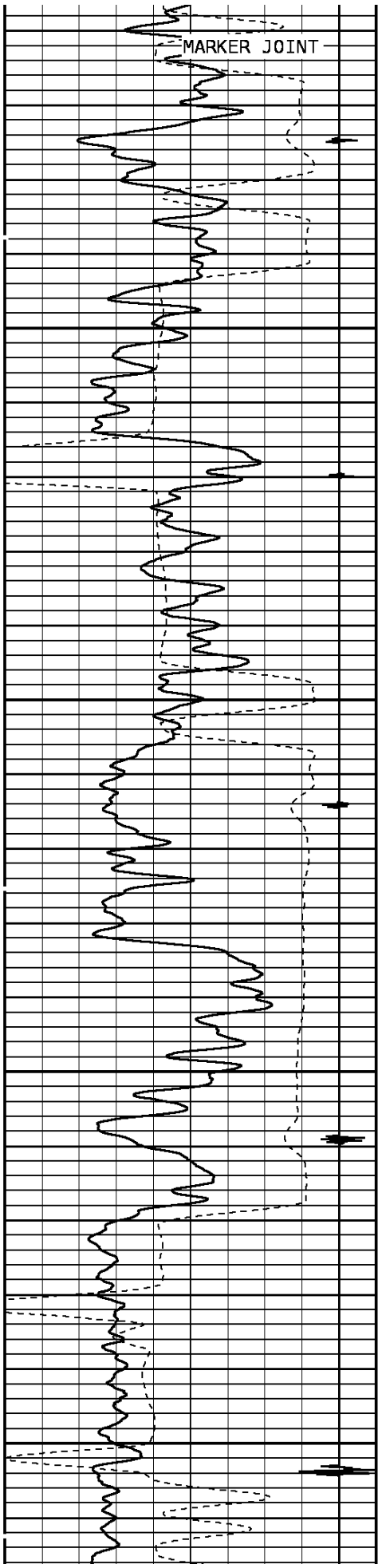




5600

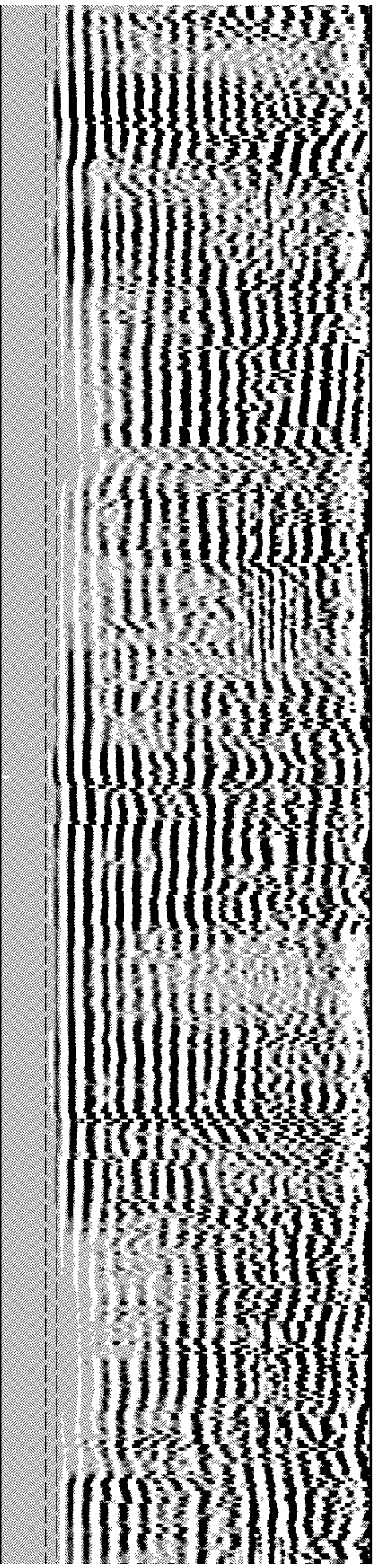
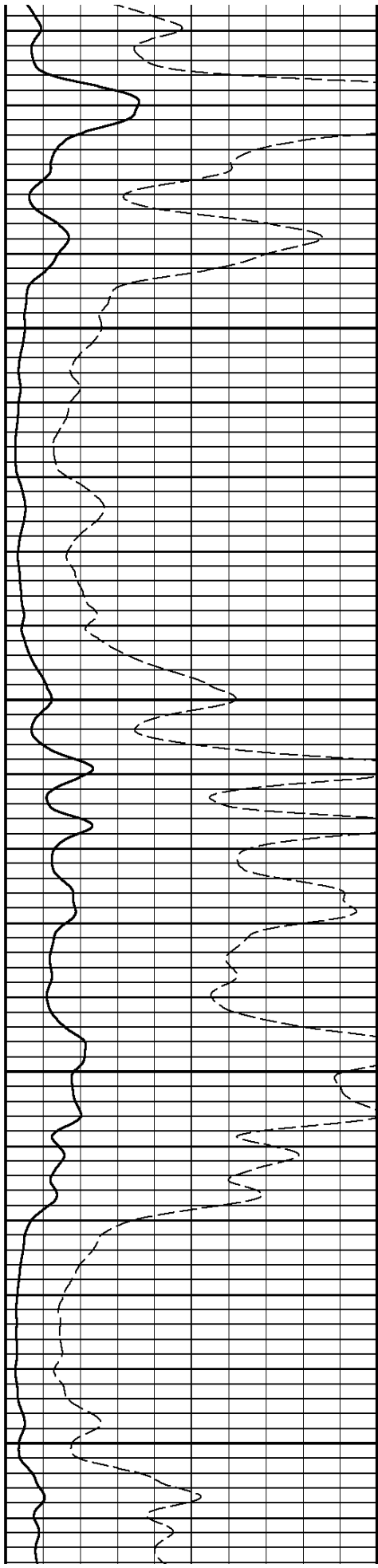
5700

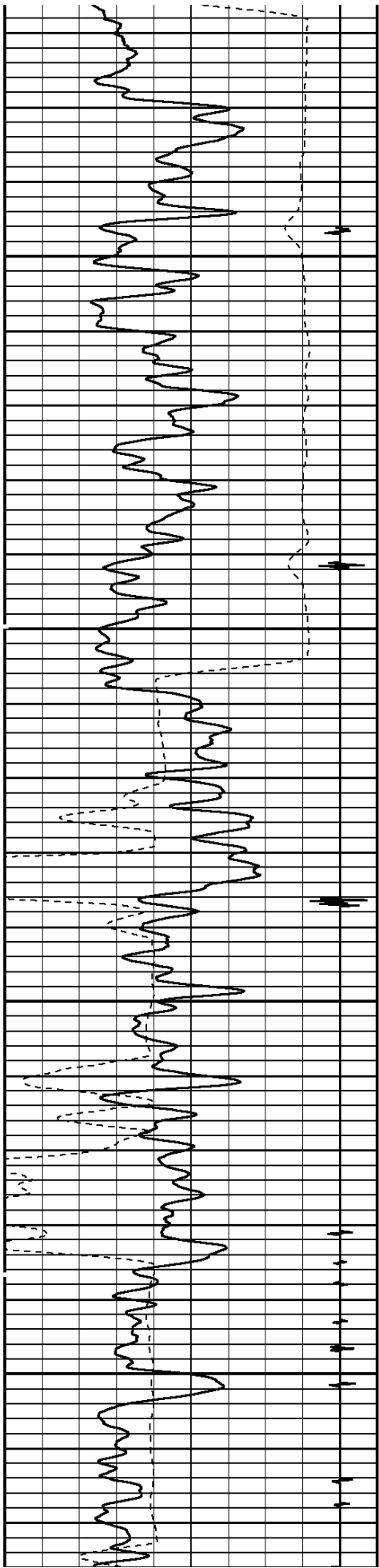




5800

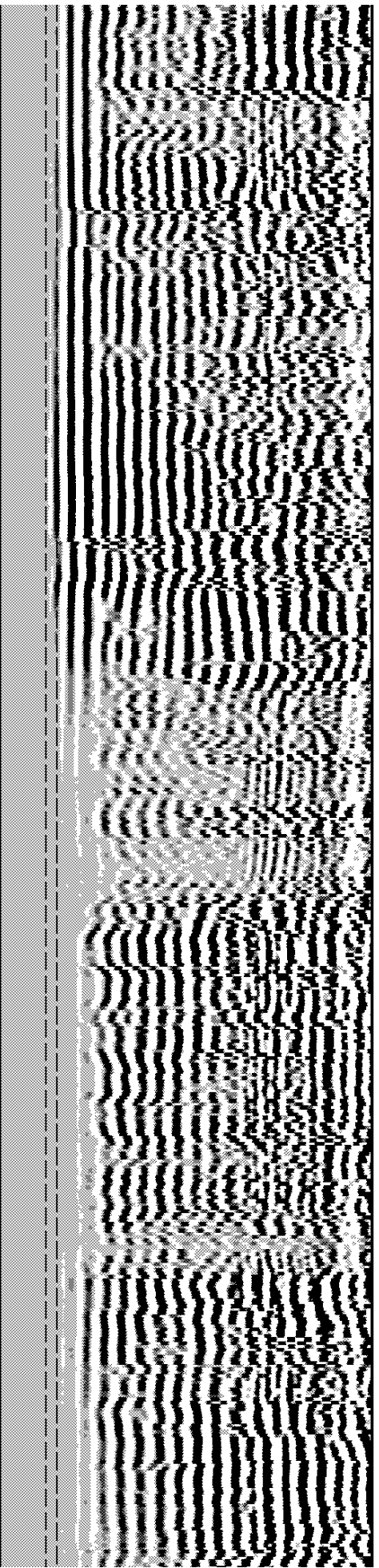
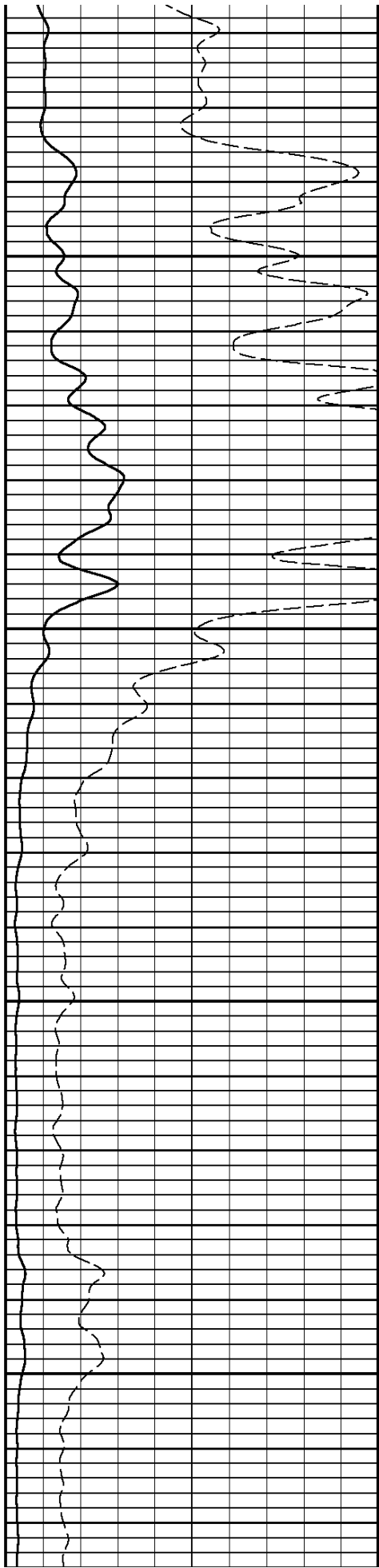
5900

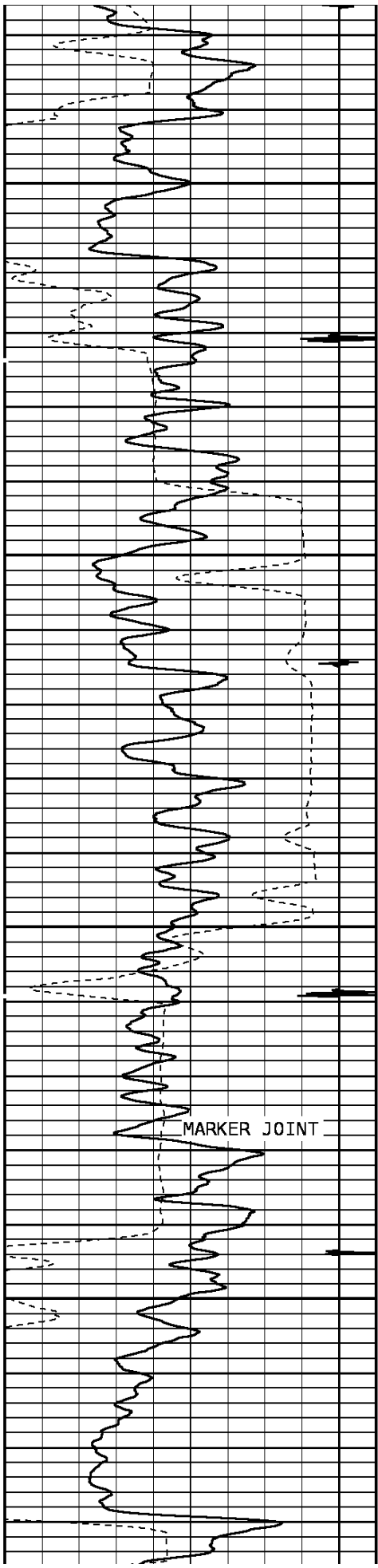




6000

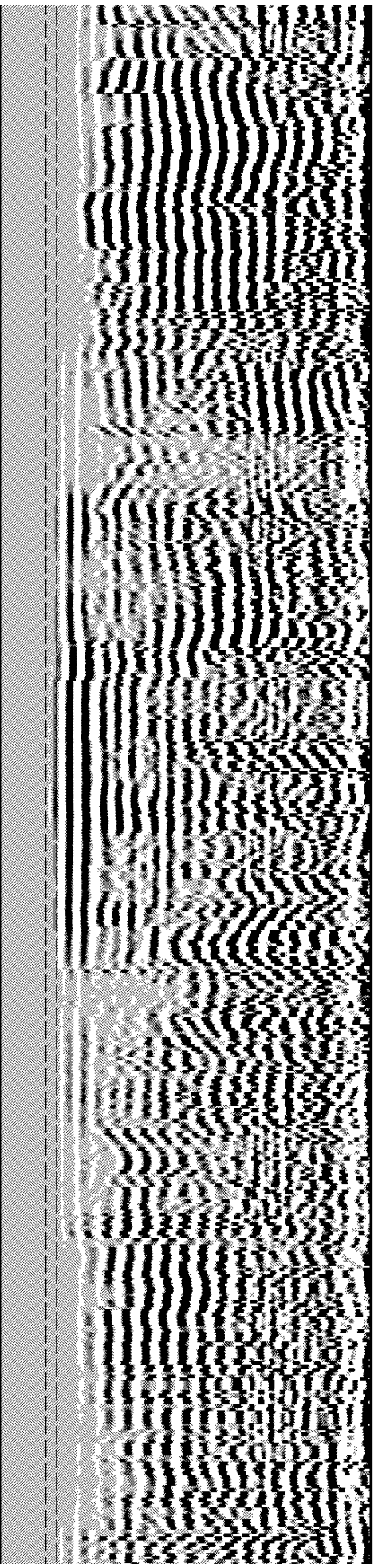
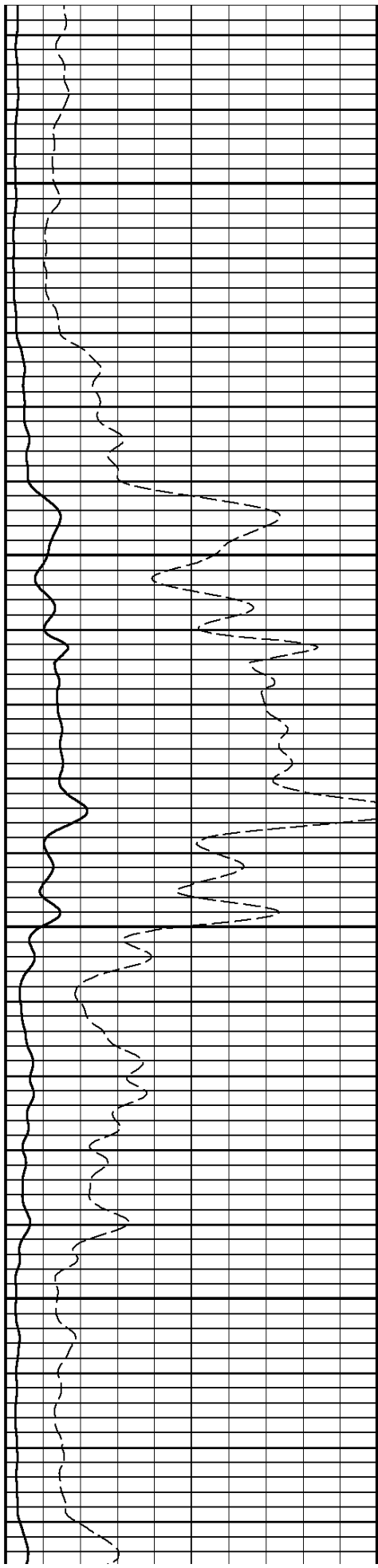
6100

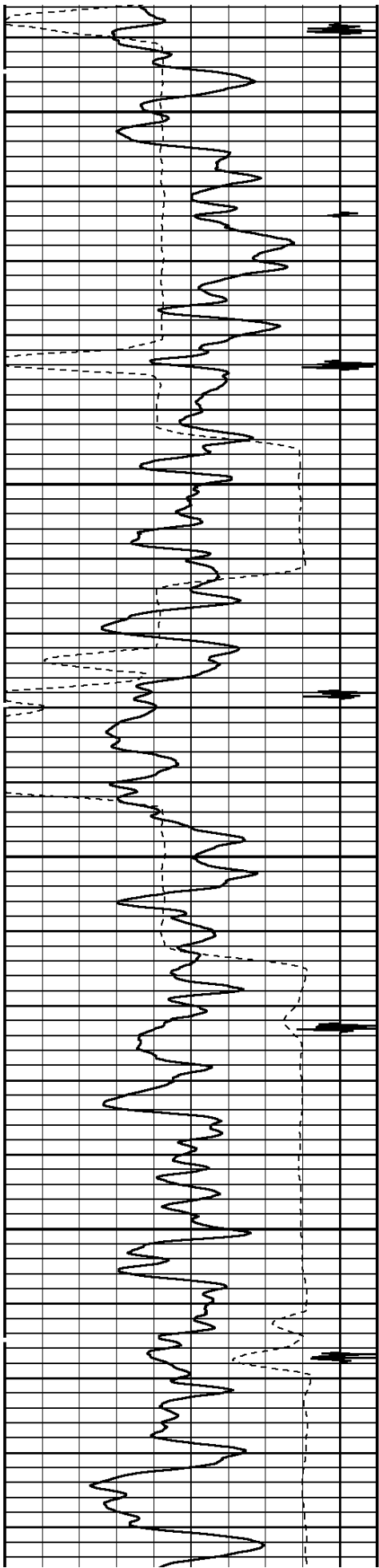




6200

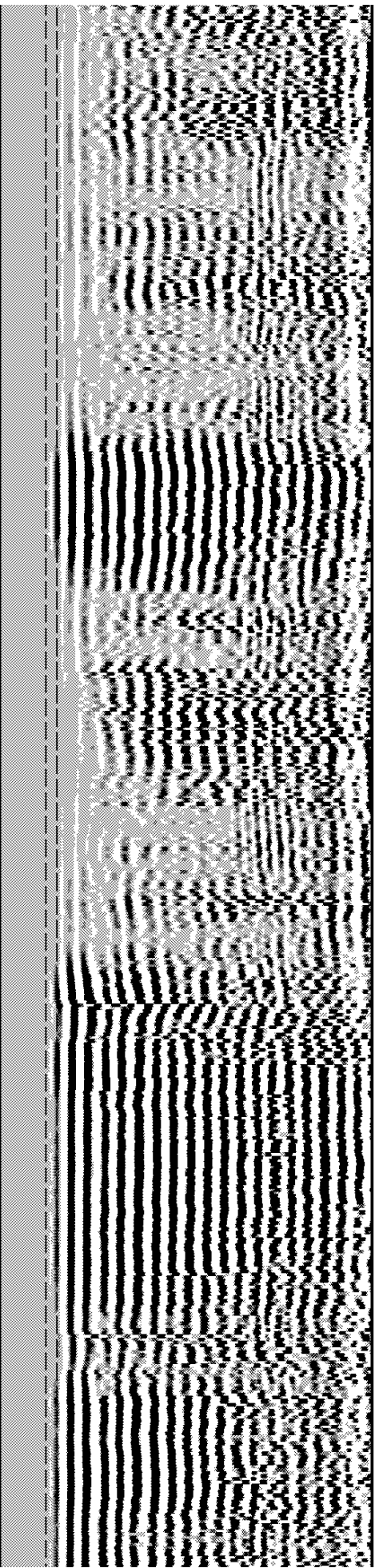
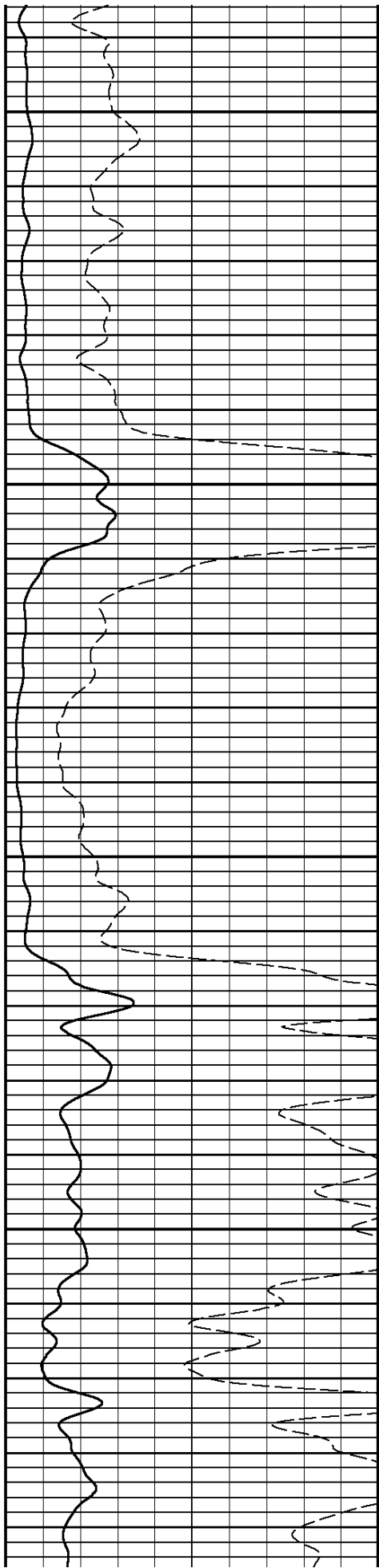
6300

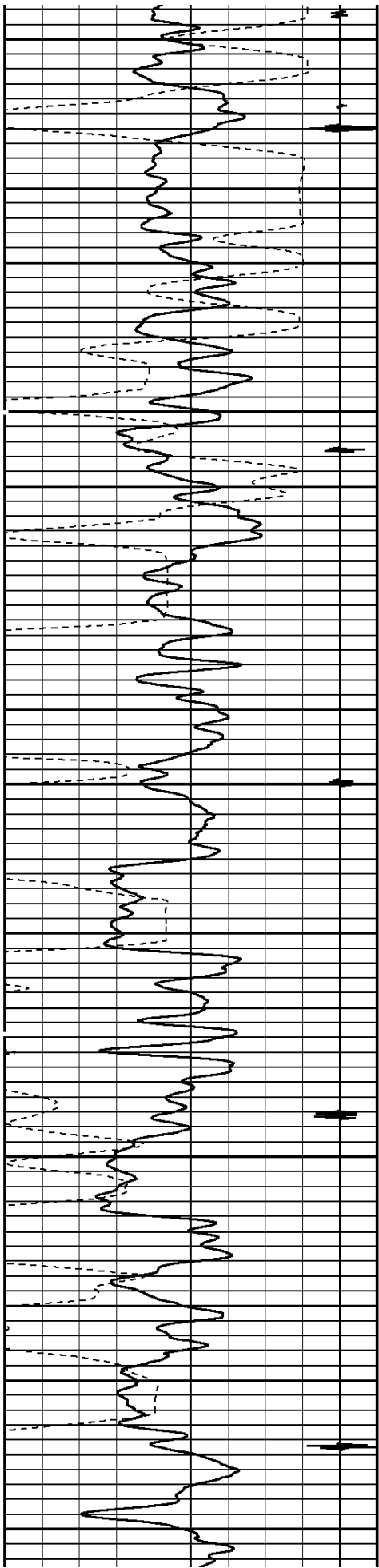




6400

6500

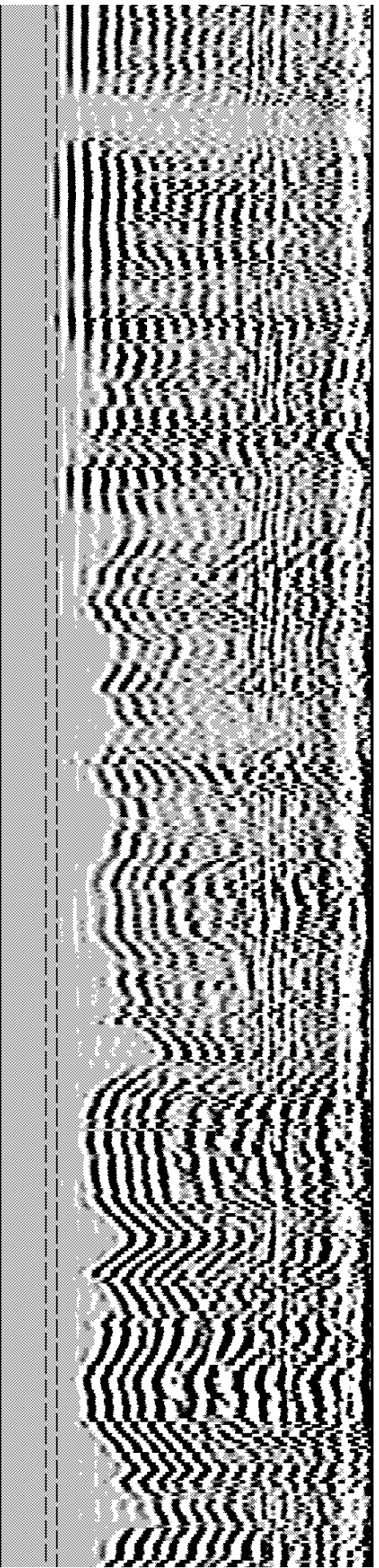
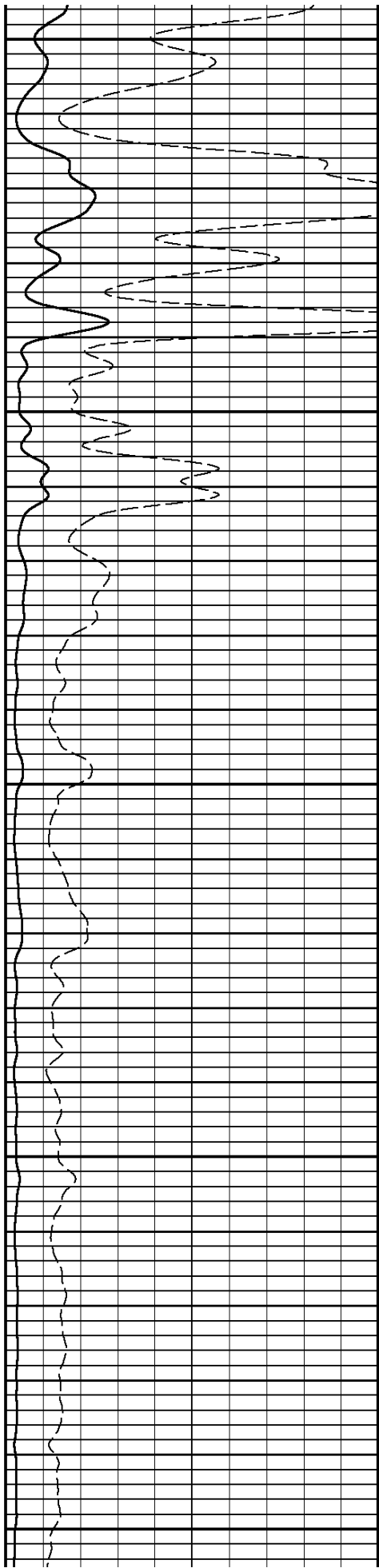


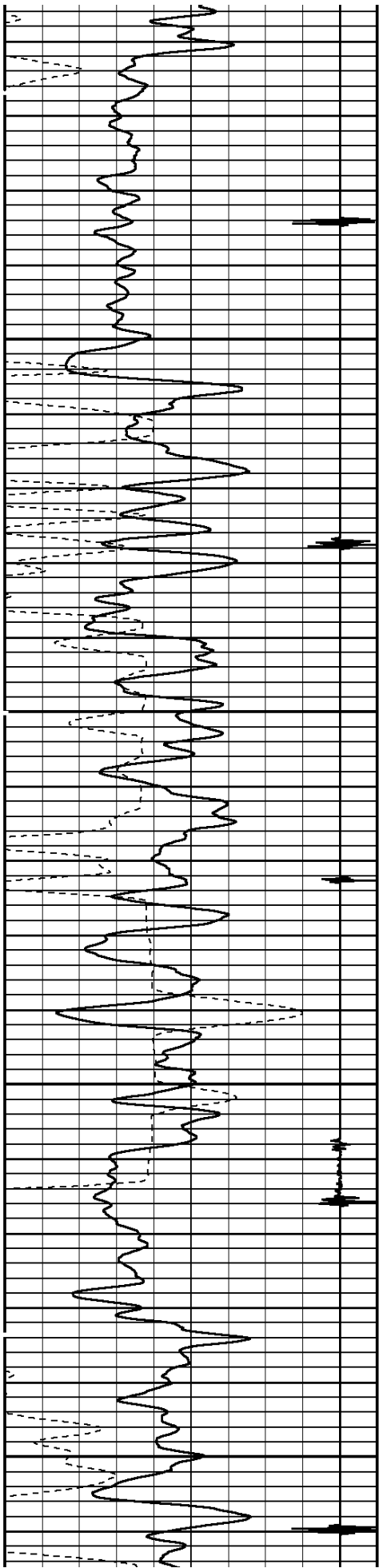


6600

6700

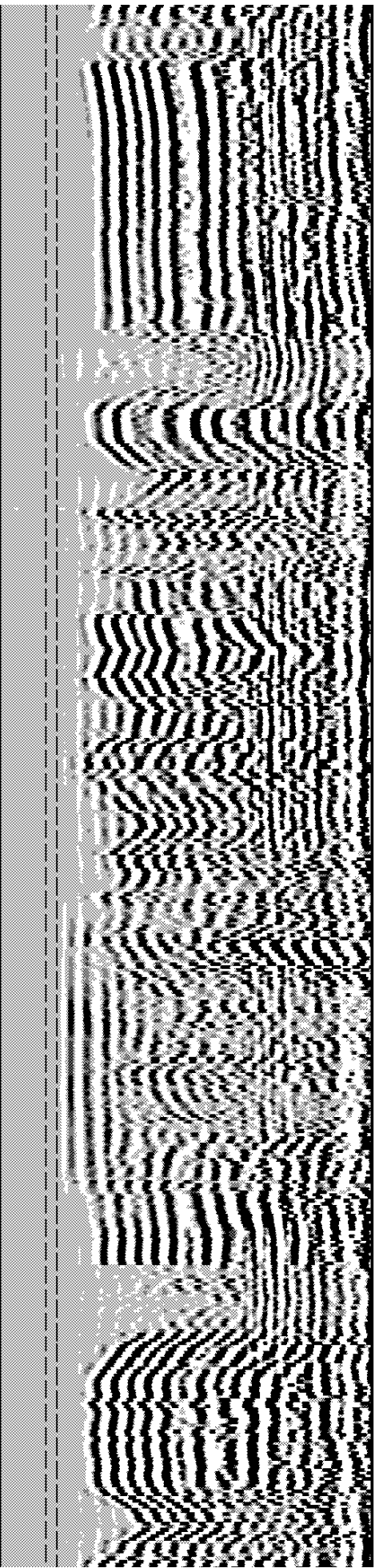
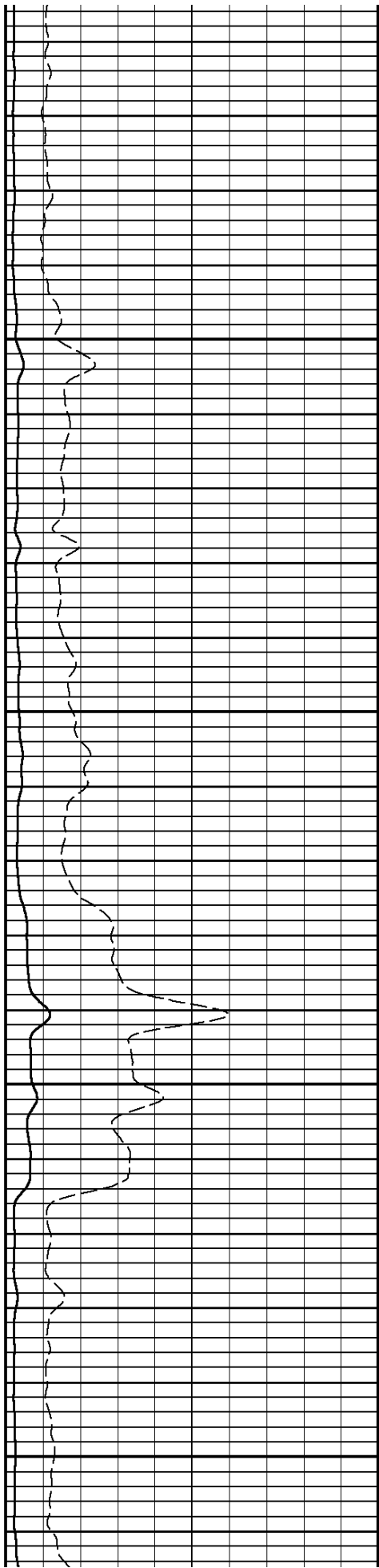
6800

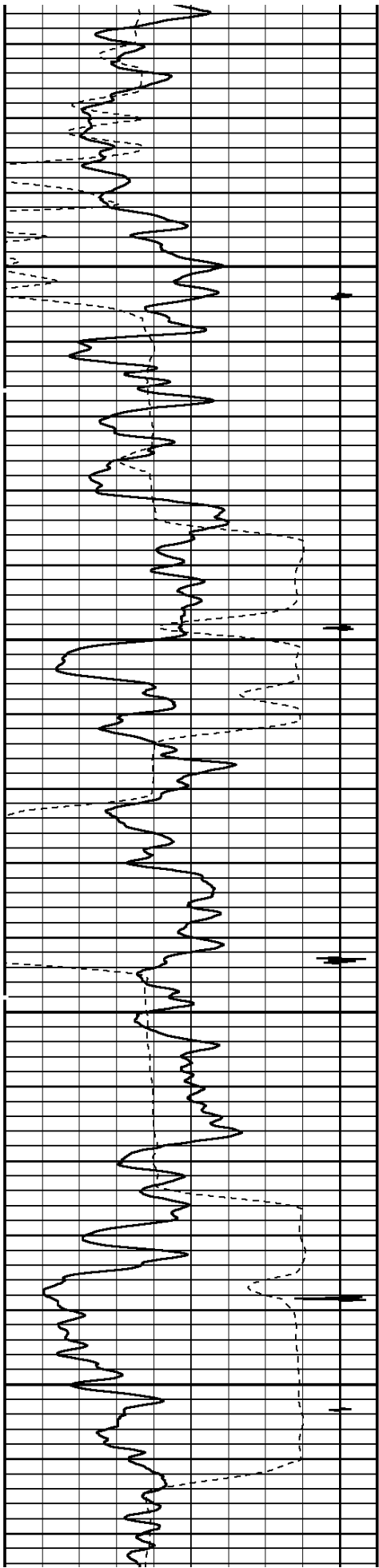




6900

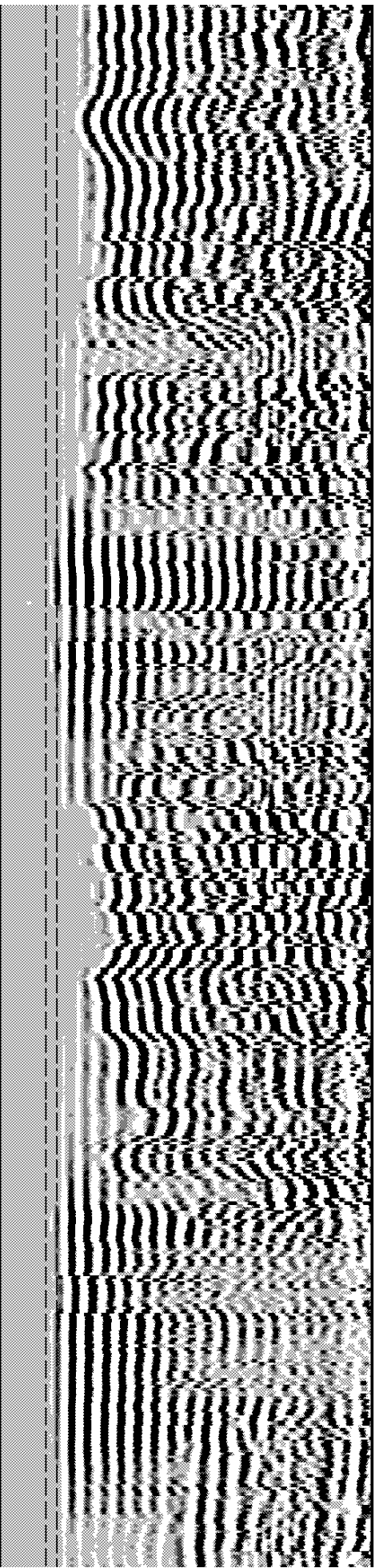
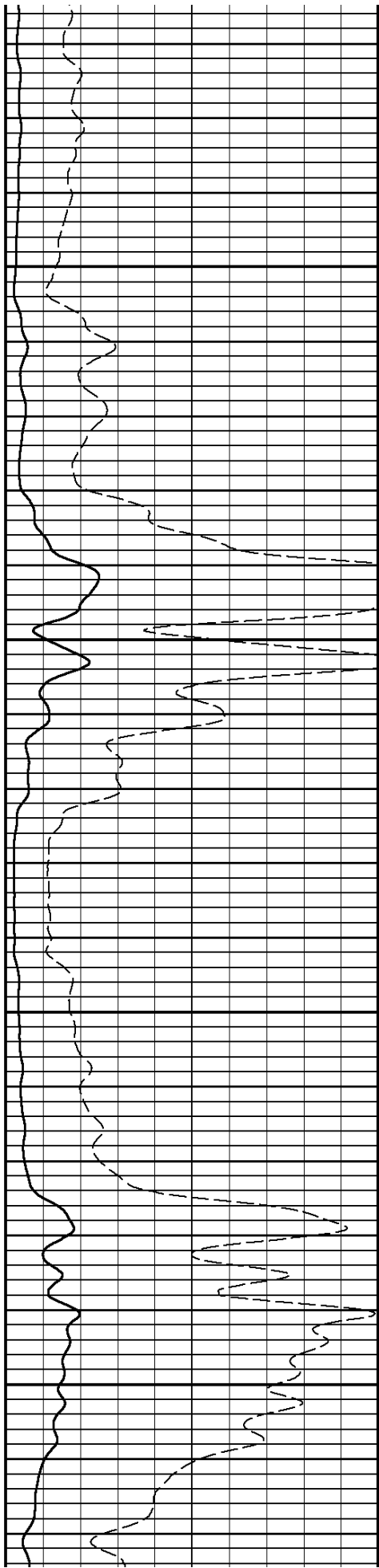
7000

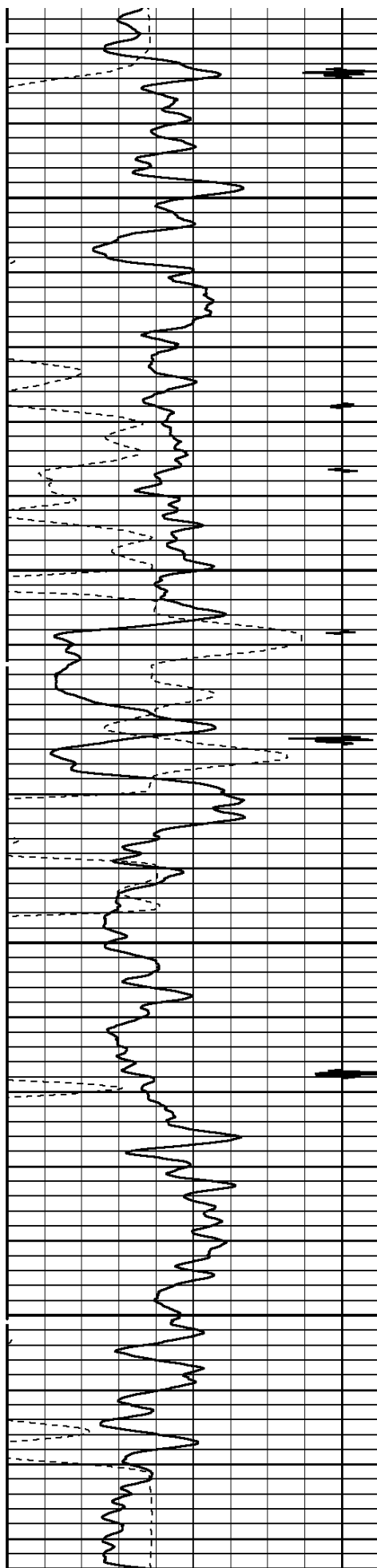




7100

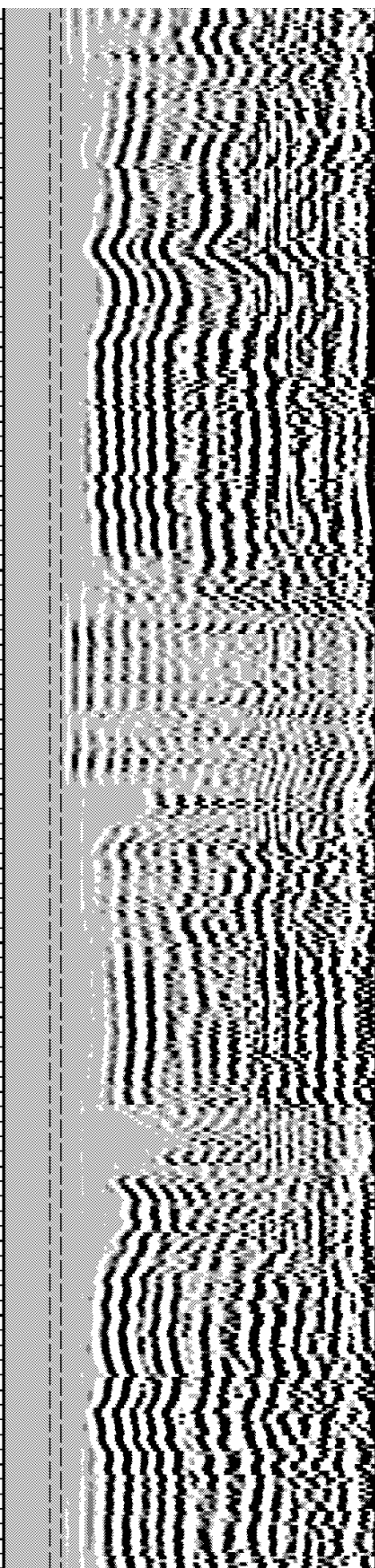
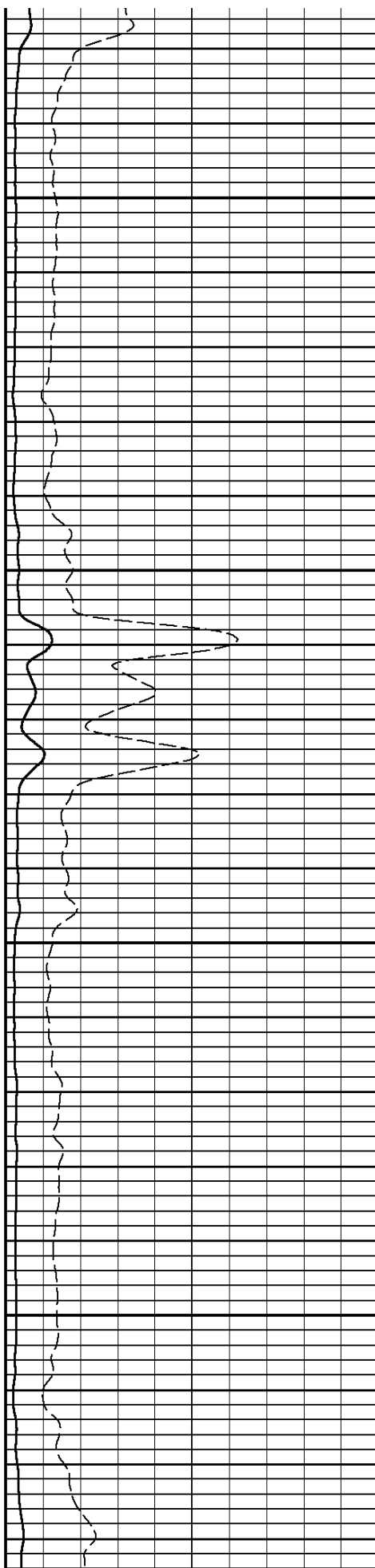
7200

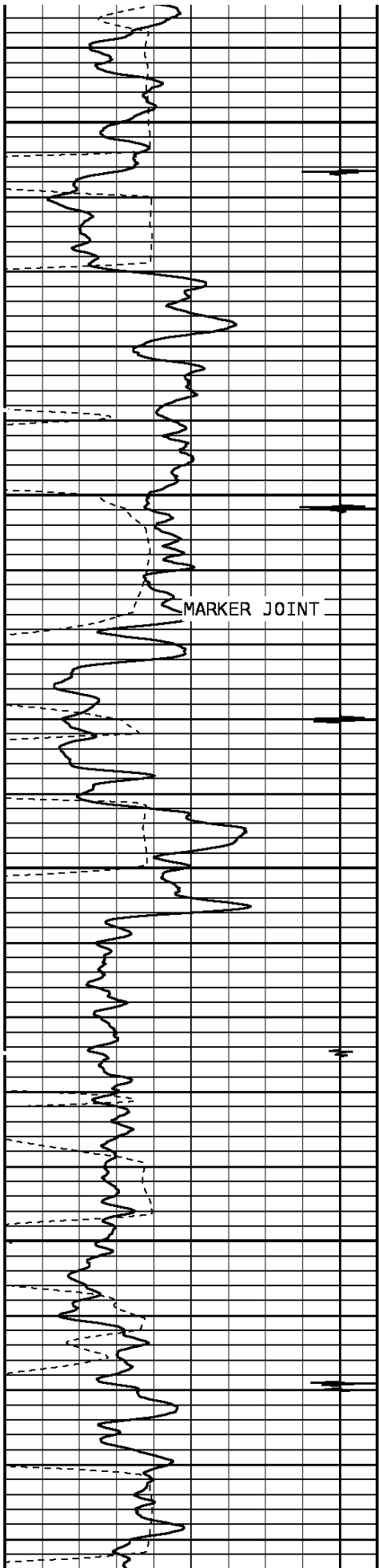




7300

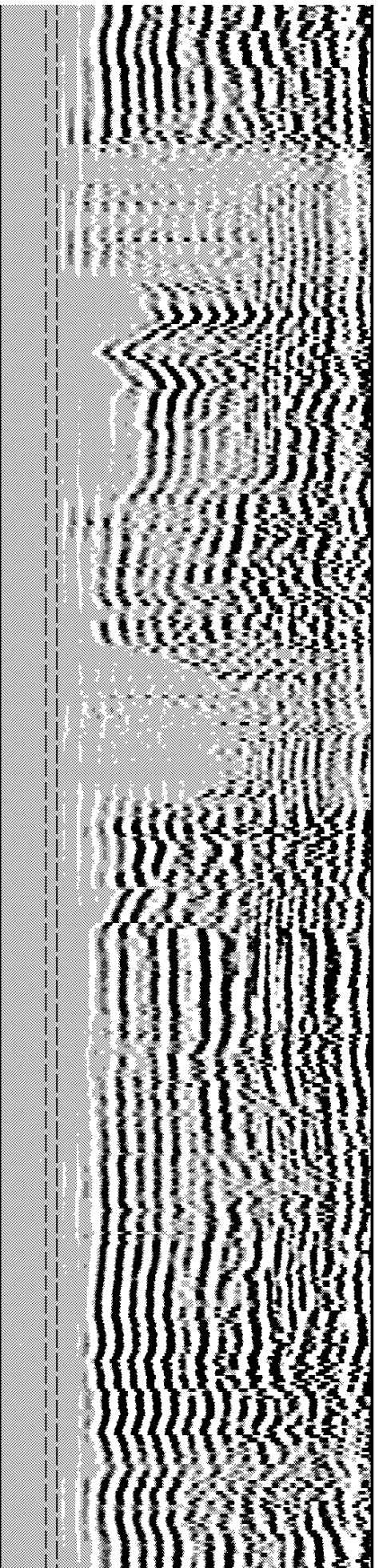
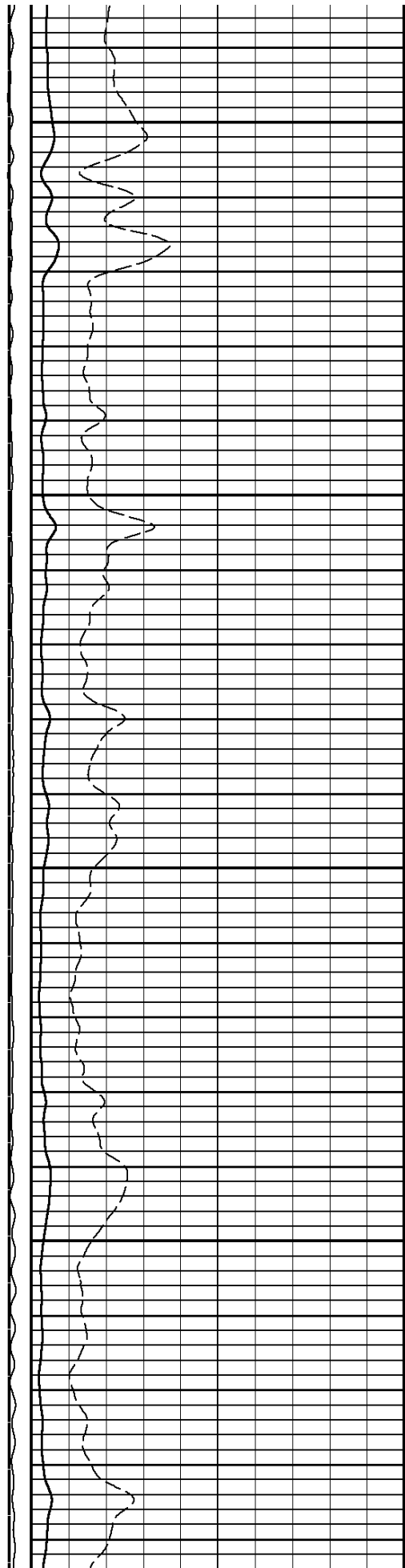
7400

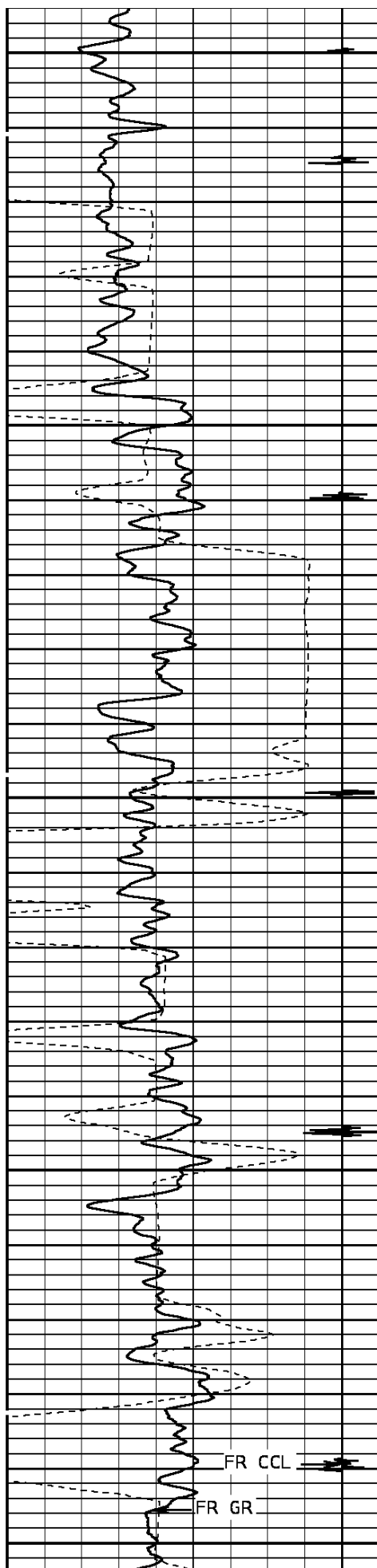




7500

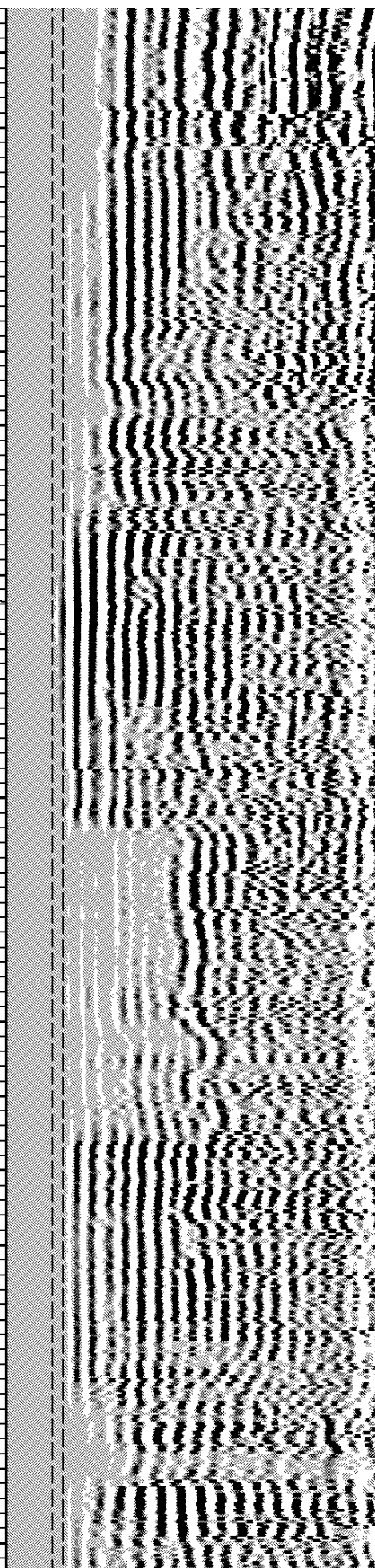
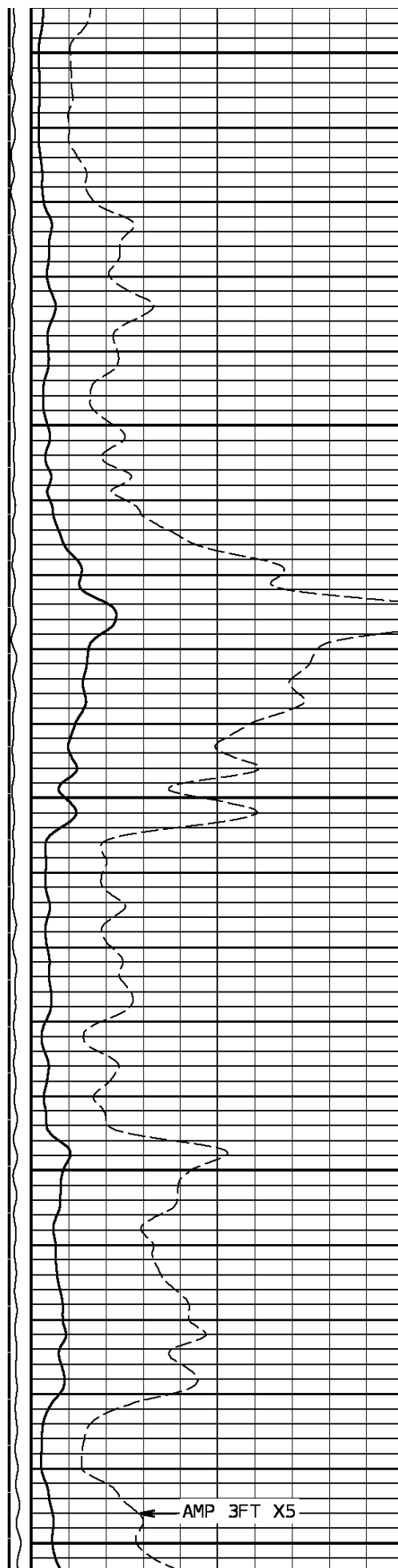
7600

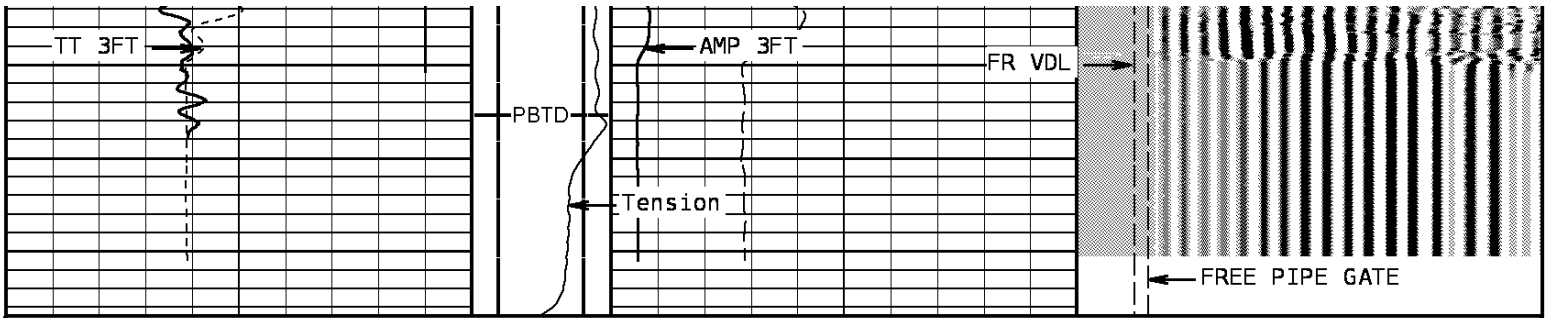




7700

7800





TRAVEL TIME 3FT			Tension	AMPLITUDE 3FT		VARIABLE DENSITY 5FT			
310	Microseconds	210		0	2400	0	200	Microseconds	1200
Gamma Ray				AMPLITUDE 3FT X5		FREE PIPE GATE			
0	API	150		0	Millivolts	20	200	Microseconds	1200
Collar Locator					FREE PIPE GATE				
-8000	Millivolts	880			200	Microseconds	1200		

START DEPTH: **7887.0** DIRECTION: **UP** DATE: **12/22/2008** TIME: **09:43** MODE: **ORIGINAL**

153110 cblmainadj

MERGED PASS

DEPTH SCALE: **5":100'** VERSION: **80214133R"**

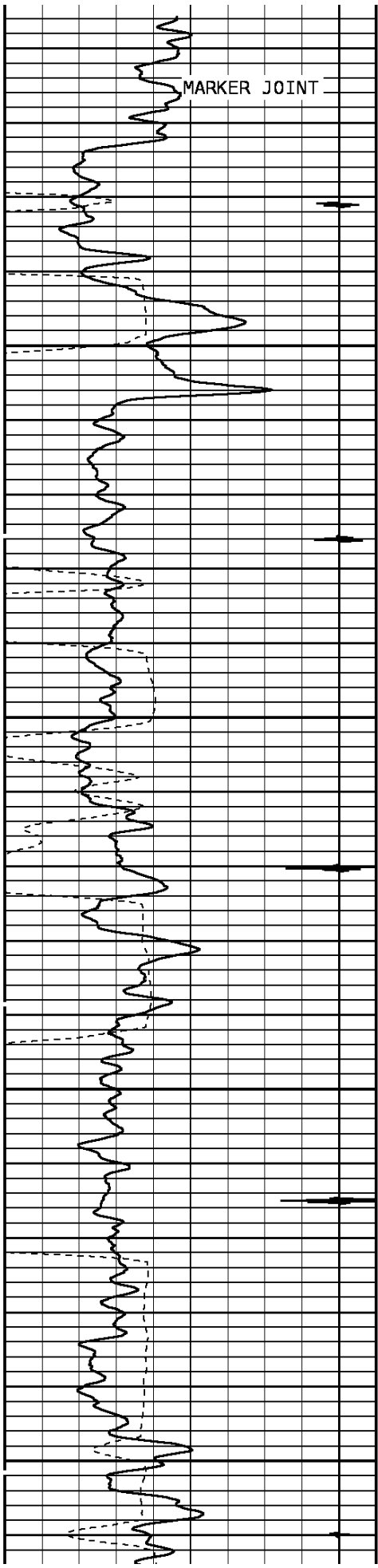
DEPTH SCALE: **5":100'** VERSION: **80214133R"**

REPEAT PASS

153110 CBLREPEAT

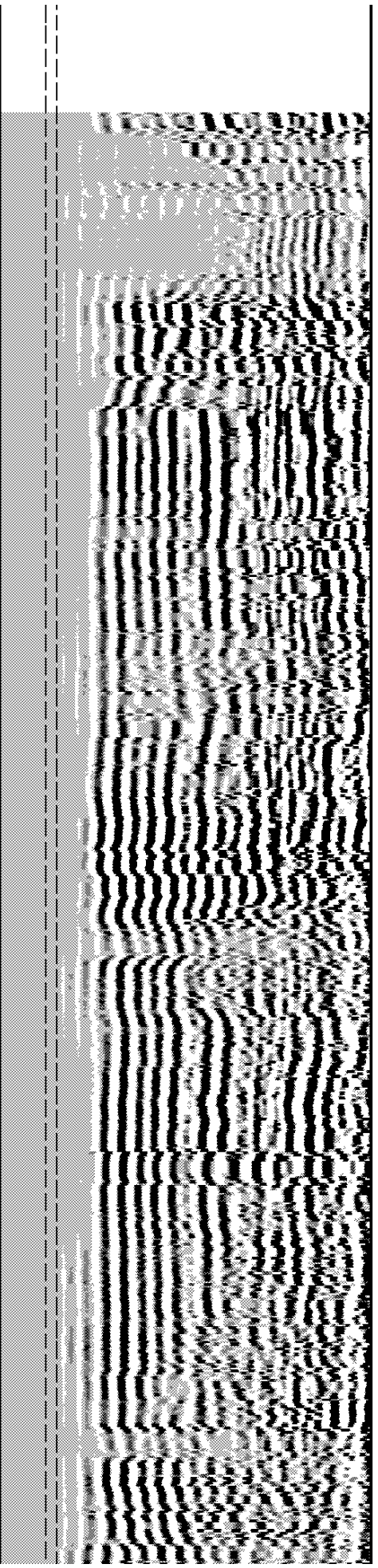
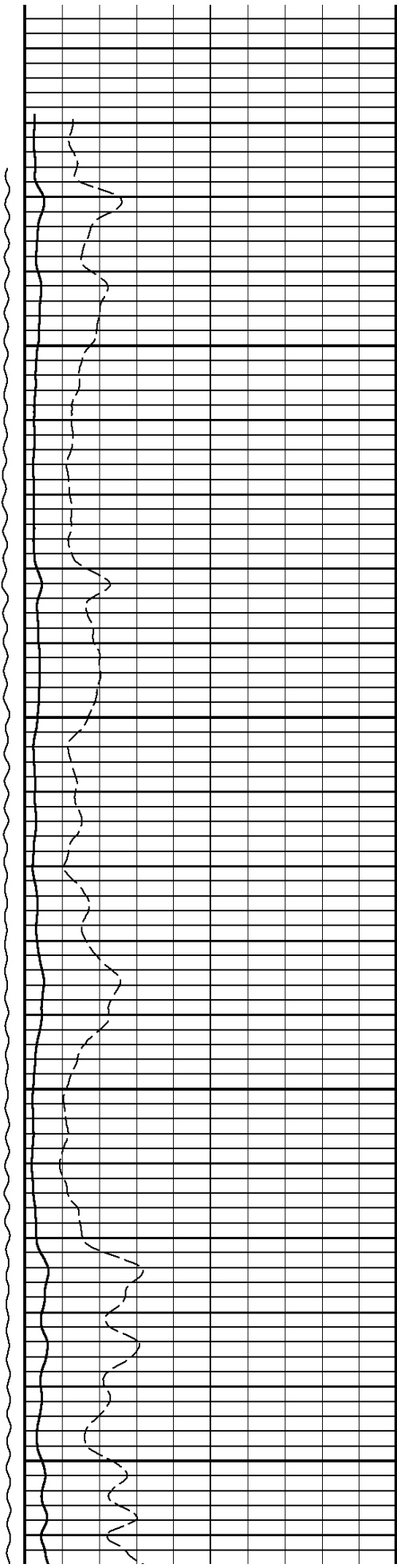
FINISH DEPTH: **7524.9** Feet DIRECTION: **UP** DATE: **12/22/2008** TIME: **10:10** MODE: **ORIGINAL**

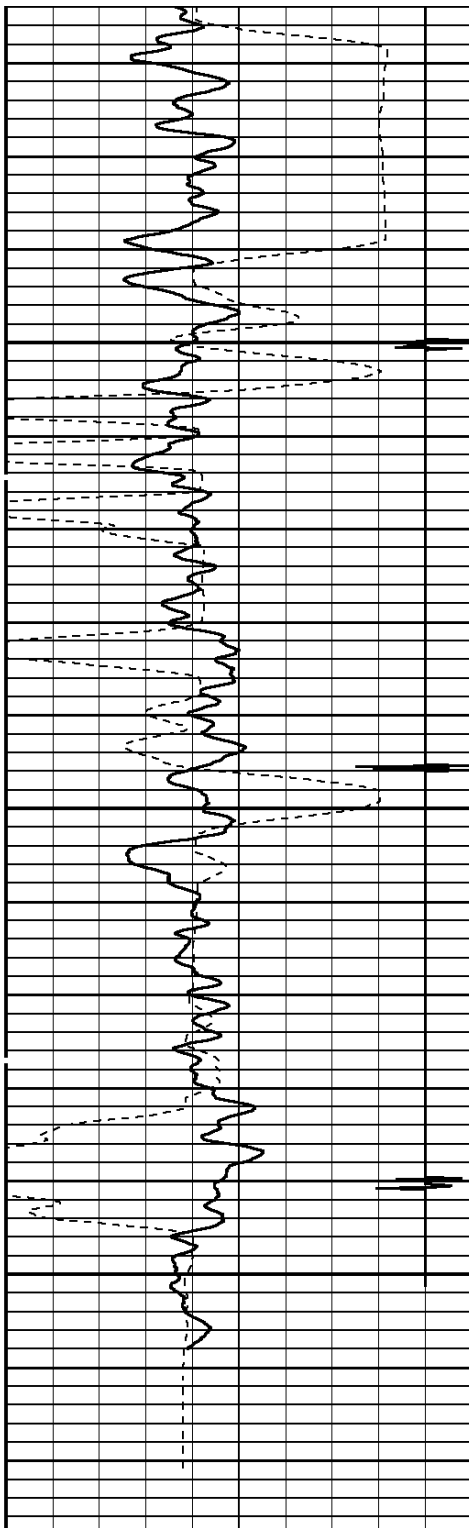
Collar Locator						FREE PIPE GATE				
-6000	Millivolts	660				200	Microseconds	1200		
Gamma Ray						FREE PIPE GATE				
0	API	150				0	Millivolts	20	200	Microseconds
TRAVEL TIME 3FT			Tension	AMPLITUDE 3FT			VARIABLE DENSITY 5FT			
310	Microseconds	210	0	2400	0	Millivolts	100	200	Microseconds	1200



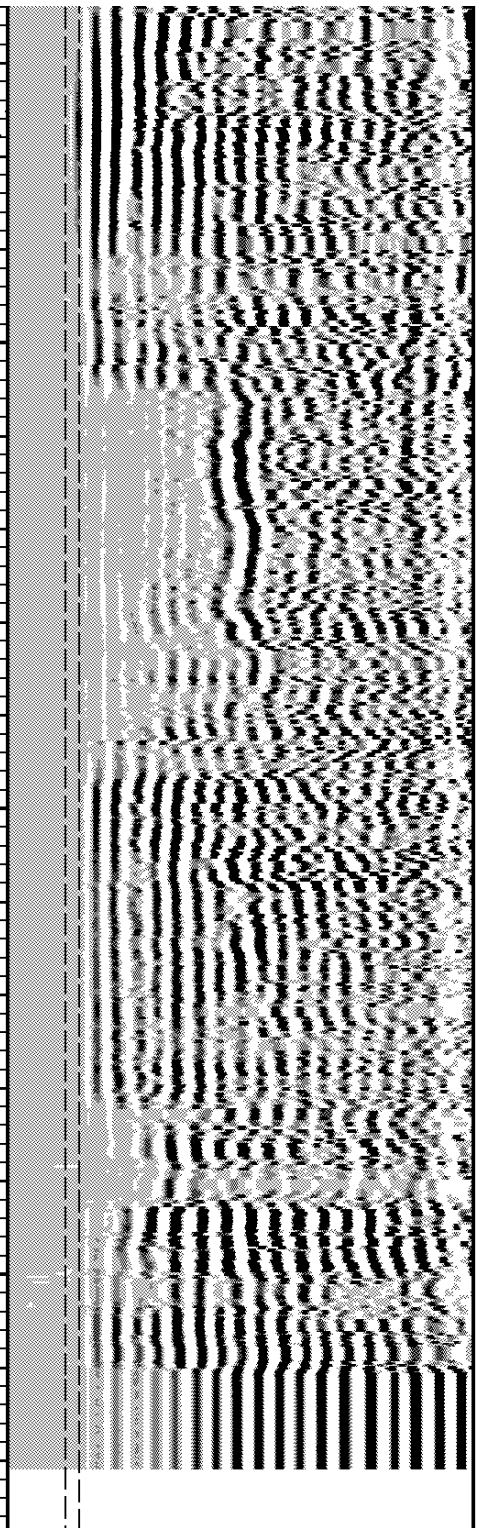
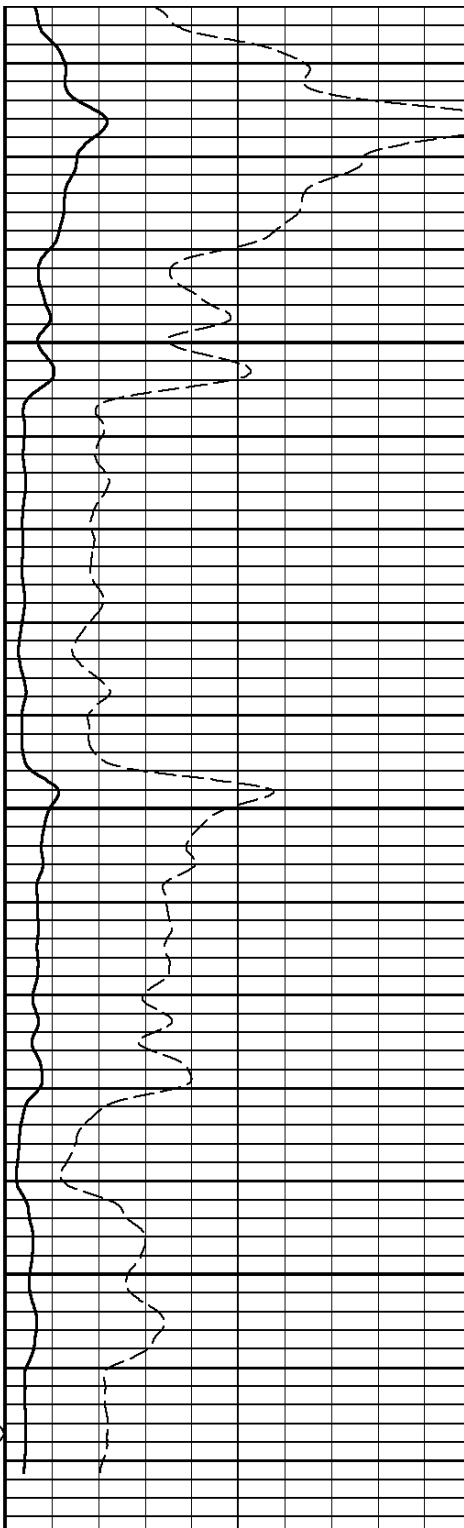
7600

7700





7800



TRAVEL TIME 3FT			Tension		AMPLITUDE 3FT		VARIABLE DENSITY 5FT					
310	Microseconds	210			0	2400	0	Millivolts	100	200	Microseconds	1200
Gamma Ray					AMPLITUDE 3FT X5		FREE PIPE GATE					
0	API	150			0	Millivolts	20	200	Microseconds	1200		
Collar Locator							FREE PIPE GATE					
-6000	Millivolts	660					200	Microseconds	1200			

START DEPTH: 1877.5 DIRECTION: UP DATE: 12/22/2008 TIME: 10:09 MODE: ORIGINAL

153110 CBLREPEAT

REPEAT PASS

DEPTH SCALE: 5":100'

VERSION: 80214133R"

12/21/08 22:47 1164.7 F Ver 80214133R Job 153112

Sector Bond After Calibration

Tool Type SBT-AA Serial No 28345

Sensor	Description	Standard	Measured
AMP 3FT	ZERO	1.00	8.50
	PLUS	81.00	1302.85
AMP 5FT	ZERO	0.00	6.44
	PLUS	100.00	1765.65
1 SECTOR AMP	ZERO	5.00	251.91
	PLUS	95.00	16
2 SECTOR AMP	ZERO	5.00	297.59
	PLUS	95.00	1681.33
3 SECTOR AMP	ZERO	5.00	45.98
	PLUS	95.00	1614.24
4 SECTOR AMP	ZERO	5.00	96.31
	PLUS	95.00	1308.63
5 SECTOR AMP	ZERO	5.00	59.61
	PLUS	95.00	1245.25
6 SECTOR AMP	ZERO	5.00	27.72
	PLUS	95.00	1163.45
7 SECTOR AMP	ZERO	5.00	154.25
	PLUS	95.00	1169.64
8 SECTOR AMP	ZERO	5.00	269.96
	PLUS	95.00	1126.40

1 7/16 Adapter Head

Weight 2.2 LB.
Length 12 IN.
Max. Diameter 1.44 IN.

Total Stack Weight 223.0 LBS. in air
Total Stack Length 27.83 FT.

Collar Locator

Weight 39.8 LBS.
Length 3.40 FT.
Max. Diameter 2.75 IN.

Slim Hole Centralizer

Weight 15 lbs
Length 2.49 FT.
Max. Diameter 2.750 IN.

Slim Hole Gamma Ray

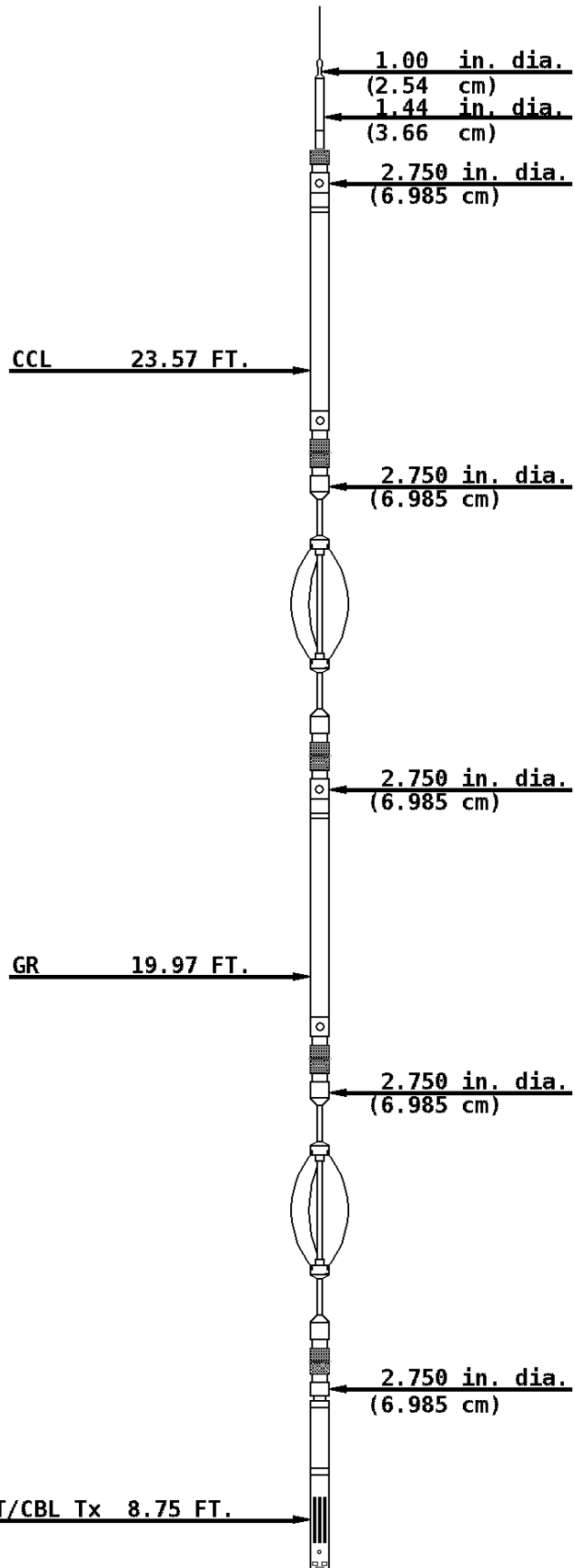
Weight 39.8 LBS.
Length 4.71 FT.
Max. Diameter 2.750 IN.

Slim Hole Centralizer

Weight 22 LBS.
Length 3.08 FT.
Max. Diameter 2.750 IN.

Sector Bond

Weight 89.2 LBS.
Length 10.32 FT.
Max. Diameter 2.750 IN.



SBT Rx 7.77 FT.

3' Rx 7.28 FT.

5' Rx 6.28 FT.

2.750 in. dia.
(6.985 cm)

Slim Hole Centralizer

Weight 15.0 LBS.
Length 2.82 FT.
Max. Diameter 2.750 IN.

Tool Zero

COMPANY BILL BARRETT CORPORATION

WELL BRYNILDSON 12C-20-692

FIELD MAMM CREEK

COUNTY GARFIELD STATE COLORADO



Weatherford®