

T2S, R98W, 6TH P.M.

N89°52'W - 2651.22' (G.L.O.)
2647.82' (Measured)
S88°18'57"E (Basis of Bearings)

1939 G.L.O. Brass Cap
1997 G.L.O. Aluminum Cap

NORTH - 2638.02' (G.L.O.)

WELL LOCATION:
BOIES C-27K-K3N
ELEV. EXISTING GRADED GROUND = 6436'

1939 G.L.O. Brass Cap

2553'

2553'

Top of Hole
Bottom of Hole

S02°36'19"W
199.97'

2035'

2235'

N02°36'07"E - 2655.06' (Meas.)

1939 G.L.O. Brass Cap

N88°14'29"W - 2620.30' (Meas.)

1939 G.L.O. Brass Cap

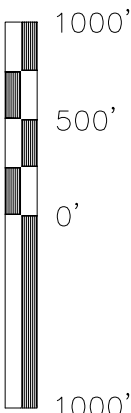
N88°28'53"W - 2681.57' (Meas.)

1939 G.L.O. Brass Cap

S02°35'12"W - 2633.94' (Meas.)

S01°51'21"W - 2661.11' (Meas.)

1939 G.L.O. Brass Cap



WHITING OIL & GAS CORPORATION

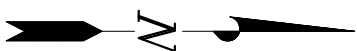
WELL LOCATION, BOIES C-27K-K3N,
LOCATED AS SHOWN IN THE NE 1/4
SW 1/4 OF SECTION 27, T2S, R98W,
6TH P.M. RIO BLANCO, COLORADO.

NOTES:

- Bearings are based on Global Positioning Satellite observations.
- G.P.S. Operator: D. Petty, (PDOP) = 1.7

IMPROVEMENT NOTE:

See addendum to legal plat (Sheet 1m)
for visible improvements within 200' of the
proposed well head.



THIS IS TO CERTIFY THAT THE ABOVE PLAT WAS
PREPARED FROM FIELD NOTES OF REAL SURVEYS
MADE BY ME OR UNDER MY SUPERVISION. THE
LOCATION HAS BEEN STAKED ON THE GROUND AS
SHOWN ON THE PLAT. I CERTIFY THAT THE SAME ARE
TRUE AND CORRECT TO THE BEST OF MY KNOWLEDGE AND BELIEF.

30125 07-29-11

REGISTERED LAND SURVEYOR
REGISTRATION NO. 30125
STATE OF UTAH
COUNTY OF KANE
LAND SURVEY

TRI STATE LAND SURVEYING & CONSULTING

180 NORTH VERNAL AVE. - VERNAL, UTAH 84078
(435) 781-2501

DATE SURVEYED: 11-05-08 SURVEYED BY: D.P.

DATE DRAWN: 11-24-08 DRAWN BY: L.C.S.

REVISED: A.P.C. 07-29-11 SCALE: 1" = 1000'

SHEET
1a

= SECTION CORNERS LOCATED

BASIS OF ELEVATIONS IS MAGNOLIA TRIANGULATION STATION
LOCATED IN THE NW 1/4 OF SECTION 9, T2S, R96W, 6TH P.M.
REPORTED FROM THE NATIONAL GEODETIC SURVEY AS BEING
7529 FEET (NAD 83)
WE MEASURED IT TO BE 7526.2 FEET.

NAD 83 (SURFACE LOCATION)	
LATITUDE = 39°50'45.50" (39.845971)	
LONGITUDE = 108°22'53.41" (108.381502)	
NAD 27 (SURFACE LOCATION)	
LATITUDE = 39°50'45.59" (39.845998)	
LONGITUDE = 108°22'51.08" (108.380856)	
NAD 83 (BOTTOM HOLE LOCATION)	
LATITUDE = 39°50'43.52" (39.845423)	
LONGITUDE = 108°22'53.44" (108.381511)	
NAD 27 (BOTTOM HOLE LOCATION)	
LATITUDE = 39°50'43.62" (39.845450)	
LONGITUDE = 108°22'51.12" (108.380865)	

WHITING OIL & GAS CORPORATION

WELL PAD INTERFERENCE PLAT

WELL PAD BOIES 27K

Section 27, T2S, R98W, 6th P.M..

1/4 Section Line

TOP HOLE FOOTAGES

Well K3N
2235' FSL & 2553' FWL

Well K4
2244' FSL & 2565' FWL

Well K2
2253' FSL & 2576' FWL

Well K1
2262' FSL & 2588' FWL

Well G1
2271' FSL & 2600' FWL

Well G2
2281' FSL & 2612' FWL

Well J4
2211' FNL & 2572' FWL

Well J3
2220' FSL & 2584' FWL

Well J2
2230' FSL & 2595' FWL

Well J1
2239' FSL & 2607' FWL

Well G3
2248' FSL & 2619' FWL

Well G4
2257' FSL & 2670' FEL

BOTTOM HOLE FOOTAGES

Well K3N
2035' FSL & 2553' FWL

Well K4
1545' FSL & 1864' FWL

Well K2
2125' FSL & 2019' FWL

Well K1
2415' FSL & 2096' FWL

Well G1
1545' FNL & 1864' FEL

Well G2
1835' FNL & 1941' FEL

Well J4
1545' FSL & 2096' FEL

Well J3
1835' FSL & 2019' FEL

Well J2
2125' FSL & 1941' FEL

Well J1
2415' FSL & 1864' FEL

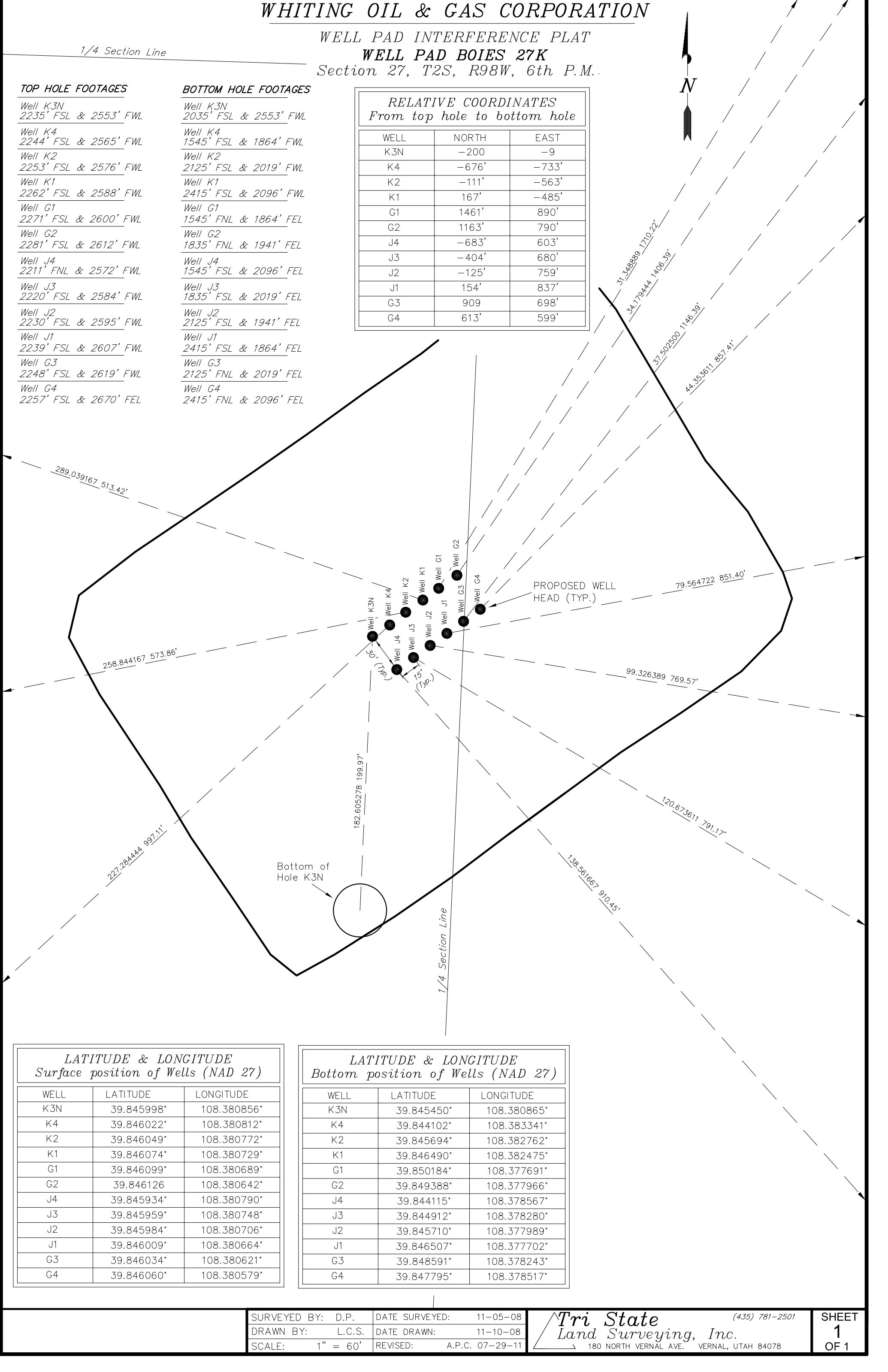
Well G3
2125' FNL & 2019' FEL

Well G4
2415' FNL & 2096' FEL

RELATIVE COORDINATES
From top hole to bottom hole

WELL	NORTH	EAST
K3N	-200	-9
K4	-676'	-733'
K2	-111'	-563'
K1	167'	-485'
G1	1461'	890'
G2	1163'	790'
J4	-683'	603'
J3	-404'	680'
J2	-125'	759'
J1	154'	837'
G3	909	698'
G4	613'	599'

N



LATITUDE & LONGITUDE
Surface position of Wells (NAD 27)

WELL	LATITUDE	LONGITUDE
K3N	39.845998°	108.380856°
K4	39.846022°	108.380812°
K2	39.846049°	108.380772°
K1	39.846074°	108.380729°
G1	39.846099°	108.380689°
G2	39.846126°	108.380642°
J4	39.845934°	108.380790°
J3	39.845959°	108.380748°
J2	39.845984°	108.380706°
J1	39.846009°	108.380664°
G3	39.846034°	108.380621°
G4	39.846060°	108.380579°

LATITUDE & LONGITUDE
Bottom position of Wells (NAD 27)

WELL	LATITUDE	LONGITUDE
K3N	39.845450°	108.380865°
K4	39.844102°	108.383341°
K2	39.845694°	108.382762°
K1	39.846490°	108.382475°
G1	39.850184°	108.377691°
G2	39.849388°	108.377966°
J4	39.844115°	108.378567°
J3	39.844912°	108.378280°
J2	39.845710°	108.377989°
J1	39.846507°	108.377702°
G3	39.848591°	108.378243°
G4	39.847795°	108.378517°

SURVEYED BY: D.P. DATE SURVEYED: 11-05-08
DRAWN BY: L.C.S. DATE DRAWN: 11-10-08
SCALE: 1" = 60' REVISED: A.P.C. 07-29-11

Tri State
Land Surveying, Inc.
180 NORTH VERNAL AVE. VERNAL, UTAH 84078

(435) 781-2501

SHEET
1
OF 1

WHITING OIL & GAS CORPORATION
WELL PAD PAD BOIES 27K ADDENDUM
Section 27, T2S, R98W, 6th P.M.

