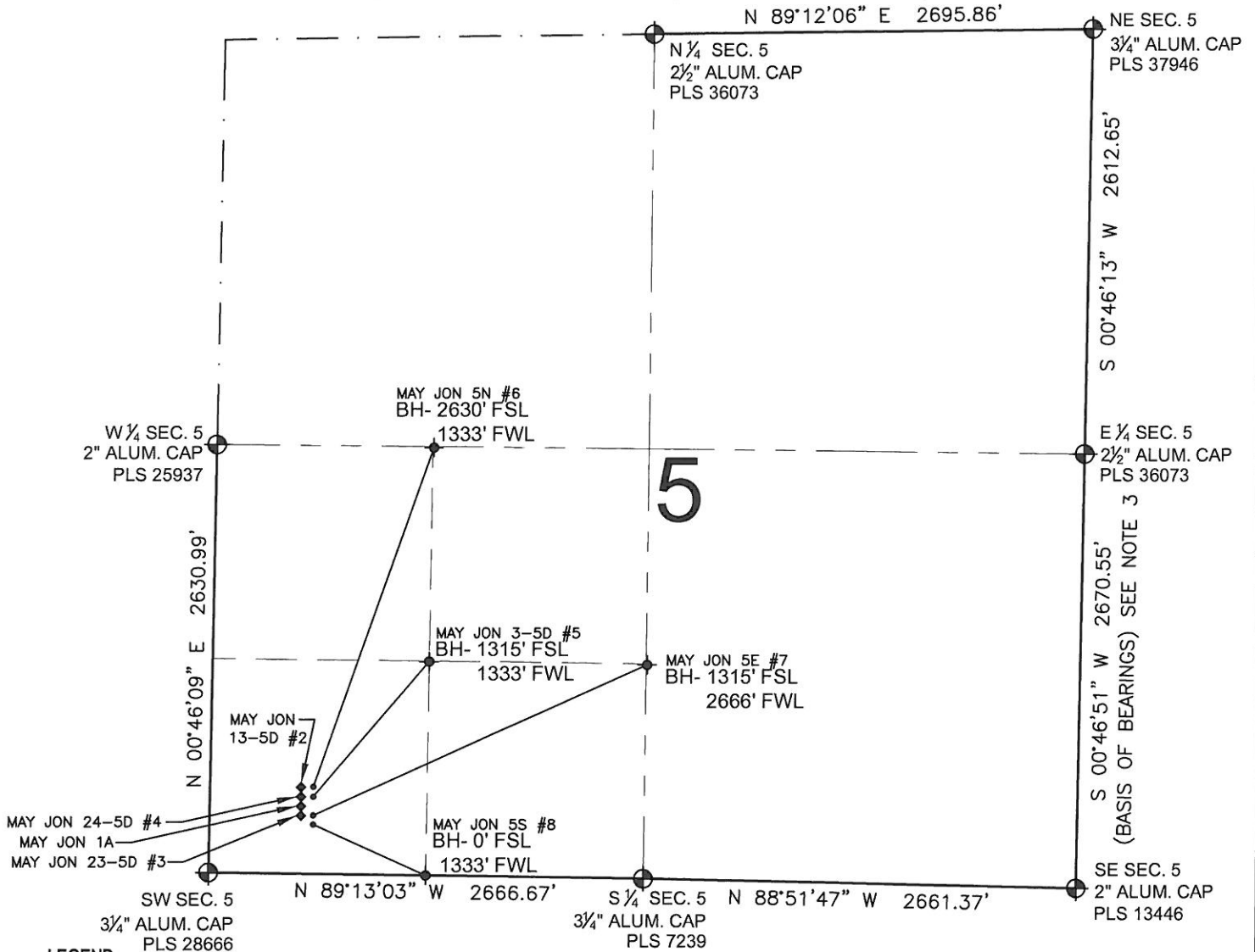


PAD DRAWING: MAY JON 4 PAD

SECTION 5, TOWNSHIP 2 NORTH, RANGE 68 WEST, 6TH P.M.



LEGEND

- ⊕ = EXISTING MONUMENT
- ⬤ = PROPOSED WELL
- ⬢ = BOTTOM HOLE
- ⬢ = EXISTING WELL
- BH= BOTTOM HOLE

NOTES:

- THIS FIELD SURVEY CONFORMS TO THE MINIMUM STANDARDS SET BY THE C.O.G.C.C., RULE NO. 215
- HORIZONTAL POSITIONS AND ORTHOMETRIC ELEVATIONS SHOWN AT THE WELL HEAD, ARE BASED ON GPS-RTK POSITIONS DERIVED FROM MINIMUM 2-HOUR STATIC OBSERVATIONS CORRECTED BY THE NATIONAL GEODETIC SURVEY ONLINE POSITIONING USER SERVICE, O.P.U.S. DATUM: HORIZONTAL = NAD83/2007, VERTICAL = NAVD88
- THE BASIS OF BEARINGS ARE STATE PLANE COORDINATE SYSTEM GRID BEARINGS SHOWN HEREON BETWEEN THE DESCRIBED THE MONUMENTS SHOWN HEREON.
- GRID DISTANCES ARE SHOWN, AS MEASURED IN THE FIELD, WITH TIES TO WELLS MEASURED PERPENDICULAR TO SECTION LINES.

NOTES:

- MAY JON 5N #6 TO BE AT 535' FSL, 634' FWL.
- BOTTOM HOLE AT 2630' FSL & 1333' FWL.
- MAY JON 3-5D #5 TO BE AT 521' FSL, 634' FWL.
- BOTTOM HOLE AT 1315' FSL & 1333' FWL.
- MAY JON 5E #7 TO BE AT 491' FSL, 633' FWL.
- BOTTOM HOLE AT 1315' FSL & 2666' FWL.
- MAY JON 5S #8 TO BE AT 476' FSL, 633' FWL.
- BOTTOM HOLE AT 0' FSL & 1333' FWL.
- MAY JON 13-5D #2 IS 535' FSL, 620' FWL.
- MAY JON 24-5D #4 IS 521' FSL, 620' FWL.
- MAY JON 1A IS 506' FSL, 619' FWL.
- MAY JON 23-5D #3 IS 491' FSL, 619' FWL.

PREPARED BY:

PFS

Petroleum Field Services, LLC
1801 W. 13th Ave.
Denver, CO 80204



SUNDANCE ENERGY

FIELD DATE:

07-19-11

PAD NAME:

MAY JON 4 PAD

DRAWING DATE:

07-26-11

SURFACE LOCATION:

BY:

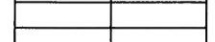
SMF & EFW

WELD COUNTY, COLORADO

SW 1/4 SW 1/4, SEC. 5, T2N, R68W



0 500 1000



SCALE: 1"=1000'