

Bonanza Creek Energy, Inc.

Weld County, CO

Sec. 36-T6N-R62W

State Whitetail 14-11-36HZ

Plan A

Plan: Plan A - Rev1 Proposal

Sperry Drilling Services

Proposal Report

19 August, 2011

Well Coordinates: 1,405,169.37 N, 3,339,823.31 E (40° 26' 21.01" N, 104° 16' 44.80" W)

Ground Level: 4,680.00 ft

Local Coordinate Origin: Centered on Well State Whitetail 14-11-36HZ

Viewing Datum: KB @ 4696.00ft (Ensign 14)

TVDs to System: N

North Reference: True

Unit System: API - US Survey Feet - Custom

Geodetic Scale Factor Applied

Version: 2003.16 Build: 431

HALLIBURTON

Plan Report for State Whitetail 14-11-36HZ - Plan A - Rev1 Proposal

Measured Depth (ft)	Inclination (°)	Azimuth (°)	Vertical Depth (ft)	+N/-S (ft)	+E/-W (ft)	Vertical Section (ft)	Dogleg Rate (°/100ft)	Build Rate (°/100ft)	Turn Rate (°/100ft)	Toolface Azimuth (°)
0.00	0.00	0.00	0.00	0.00	0.00	0.00	0.00	0.00	0.00	0.00
100.00	0.00	0.00	100.00	0.00	0.00	0.00	0.00	0.00	0.00	0.00
200.00	0.00	0.00	200.00	0.00	0.00	0.00	0.00	0.00	0.00	0.00
300.00	0.00	0.00	300.00	0.00	0.00	0.00	0.00	0.00	0.00	0.00
400.00	0.00	0.00	400.00	0.00	0.00	0.00	0.00	0.00	0.00	0.00
500.00	0.00	0.00	500.00	0.00	0.00	0.00	0.00	0.00	0.00	0.00
600.00	0.00	0.00	600.00	0.00	0.00	0.00	0.00	0.00	0.00	0.00
700.00	0.00	0.00	700.00	0.00	0.00	0.00	0.00	0.00	0.00	0.00
800.00	0.00	0.00	800.00	0.00	0.00	0.00	0.00	0.00	0.00	0.00
900.00	0.00	0.00	900.00	0.00	0.00	0.00	0.00	0.00	0.00	0.00
1,000.00	0.00	0.00	1,000.00	0.00	0.00	0.00	0.00	0.00	0.00	0.00
1,100.00	0.00	0.00	1,100.00	0.00	0.00	0.00	0.00	0.00	0.00	0.00
1,200.00	0.00	0.00	1,200.00	0.00	0.00	0.00	0.00	0.00	0.00	0.00
1,300.00	0.00	0.00	1,300.00	0.00	0.00	0.00	0.00	0.00	0.00	0.00
1,400.00	0.00	0.00	1,400.00	0.00	0.00	0.00	0.00	0.00	0.00	0.00
1,500.00	0.00	0.00	1,500.00	0.00	0.00	0.00	0.00	0.00	0.00	0.00
1,600.00	0.00	0.00	1,600.00	0.00	0.00	0.00	0.00	0.00	0.00	0.00
1,700.00	0.00	0.00	1,700.00	0.00	0.00	0.00	0.00	0.00	0.00	0.00
1,800.00	0.00	0.00	1,800.00	0.00	0.00	0.00	0.00	0.00	0.00	0.00
1,900.00	0.00	0.00	1,900.00	0.00	0.00	0.00	0.00	0.00	0.00	0.00
2,000.00	0.00	0.00	2,000.00	0.00	0.00	0.00	0.00	0.00	0.00	0.00
2,100.00	0.00	0.00	2,100.00	0.00	0.00	0.00	0.00	0.00	0.00	0.00
2,200.00	0.00	0.00	2,200.00	0.00	0.00	0.00	0.00	0.00	0.00	0.00
2,300.00	0.00	0.00	2,300.00	0.00	0.00	0.00	0.00	0.00	0.00	0.00
2,400.00	0.00	0.00	2,400.00	0.00	0.00	0.00	0.00	0.00	0.00	0.00
2,500.00	0.00	0.00	2,500.00	0.00	0.00	0.00	0.00	0.00	0.00	0.00
2,600.00	0.00	0.00	2,600.00	0.00	0.00	0.00	0.00	0.00	0.00	0.00
2,700.00	0.00	0.00	2,700.00	0.00	0.00	0.00	0.00	0.00	0.00	0.00
2,800.00	0.00	0.00	2,800.00	0.00	0.00	0.00	0.00	0.00	0.00	0.00
2,900.00	0.00	0.00	2,900.00	0.00	0.00	0.00	0.00	0.00	0.00	0.00
3,000.00	0.00	0.00	3,000.00	0.00	0.00	0.00	0.00	0.00	0.00	0.00
3,100.00	0.00	0.00	3,100.00	0.00	0.00	0.00	0.00	0.00	0.00	0.00
3,200.00	0.00	0.00	3,200.00	0.00	0.00	0.00	0.00	0.00	0.00	0.00
3,300.00	0.00	0.00	3,300.00	0.00	0.00	0.00	0.00	0.00	0.00	0.00
3,400.00	0.00	0.00	3,400.00	0.00	0.00	0.00	0.00	0.00	0.00	0.00
3,500.00	0.00	0.00	3,500.00	0.00	0.00	0.00	0.00	0.00	0.00	0.00
3,600.00	0.00	0.00	3,600.00	0.00	0.00	0.00	0.00	0.00	0.00	0.00
3,700.00	0.00	0.00	3,700.00	0.00	0.00	0.00	0.00	0.00	0.00	0.00
3,800.00	0.00	0.00	3,800.00	0.00	0.00	0.00	0.00	0.00	0.00	0.00
3,900.00	0.00	0.00	3,900.00	0.00	0.00	0.00	0.00	0.00	0.00	0.00
4,000.00	0.00	0.00	4,000.00	0.00	0.00	0.00	0.00	0.00	0.00	0.00
4,100.00	0.00	0.00	4,100.00	0.00	0.00	0.00	0.00	0.00	0.00	0.00
4,200.00	0.00	0.00	4,200.00	0.00	0.00	0.00	0.00	0.00	0.00	0.00
4,300.00	0.00	0.00	4,300.00	0.00	0.00	0.00	0.00	0.00	0.00	0.00
4,400.00	0.00	0.00	4,400.00	0.00	0.00	0.00	0.00	0.00	0.00	0.00
4,500.00	0.00	0.00	4,500.00	0.00	0.00	0.00	0.00	0.00	0.00	0.00
4,600.00	0.00	0.00	4,600.00	0.00	0.00	0.00	0.00	0.00	0.00	0.00
4,700.00	0.00	0.00	4,700.00	0.00	0.00	0.00	0.00	0.00	0.00	0.00
4,800.00	0.00	0.00	4,800.00	0.00	0.00	0.00	0.00	0.00	0.00	0.00
4,900.00	0.00	0.00	4,900.00	0.00	0.00	0.00	0.00	0.00	0.00	0.00
5,000.00	0.00	0.00	5,000.00	0.00	0.00	0.00	0.00	0.00	0.00	0.00
5,100.00	0.00	0.00	5,100.00	0.00	0.00	0.00	0.00	0.00	0.00	0.00
5,200.00	0.00	0.00	5,200.00	0.00	0.00	0.00	0.00	0.00	0.00	0.00
5,300.00	0.00	0.00	5,300.00	0.00	0.00	0.00	0.00	0.00	0.00	0.00
5,400.00	0.00	0.00	5,400.00	0.00	0.00	0.00	0.00	0.00	0.00	0.00
5,500.00	0.00	0.00	5,500.00	0.00	0.00	0.00	0.00	0.00	0.00	0.00
5,546.80	0.00	0.00	5,546.80	0.00	0.00	0.00	0.00	0.00	0.00	0.00

KOP - Begin 8.0°/100ft Build at 5546.80ft

Plan Report for State Whitetail 14-11-36HZ - Plan A - Rev1 Proposal

Measured Depth (ft)	Inclination (°)	Azimuth (°)	Vertical Depth (ft)	+N/-S (ft)	+E/-W (ft)	Vertical Section (ft)	Dogleg Rate (°/100ft)	Build Rate (°/100ft)	Turn Rate (°/100ft)	Toolface Azimuth (°)
5,600.00	4.26	0.80	5,599.95	1.97	0.03	1.97	8.00	8.00	0.00	0.80
5,700.00	12.26	0.80	5,698.83	16.32	0.23	16.32	8.00	8.00	0.00	0.00
5,800.00	20.26	0.80	5,794.76	44.29	0.62	44.29	8.00	8.00	0.00	0.00
5,900.00	28.26	0.80	5,885.86	85.33	1.20	85.34	8.00	8.00	0.00	0.00
6,000.00	36.26	0.80	5,970.36	138.65	1.94	138.67	8.00	8.00	0.00	0.00
6,100.00	44.26	0.80	6,046.61	203.21	2.85	203.23	8.00	8.00	0.00	0.00
6,200.00	52.26	0.80	6,113.14	277.76	3.89	277.79	8.00	8.00	0.00	0.00
6,300.00	60.26	0.80	6,168.64	360.84	5.05	360.87	8.00	8.00	0.00	0.00
6,400.00	68.26	0.80	6,212.04	450.83	6.31	450.87	8.00	8.00	0.00	0.00
6,500.00	76.26	0.80	6,242.49	545.98	7.65	546.04	8.00	8.00	0.00	0.00
6,600.00	84.26	0.80	6,259.40	644.45	9.03	644.51	8.00	8.00	0.00	0.00
6,671.80	90.00	0.80	6,263.00	716.12	10.03	716.19	8.00	8.00	0.00	0.00
End of Build at 6671.80ft - 7" Csg										
6,700.00	90.00	0.80	6,263.00	744.32	10.42	744.39	0.00	0.00	0.00	0.00
6,800.00	90.00	0.80	6,263.00	844.31	11.82	844.39	0.00	0.00	0.00	0.00
6,900.00	90.00	0.80	6,263.00	944.30	13.22	944.39	0.00	0.00	0.00	0.00
7,000.00	90.00	0.80	6,263.00	1,044.29	14.62	1,044.39	0.00	0.00	0.00	0.00
7,100.00	90.00	0.80	6,263.00	1,144.28	16.03	1,144.39	0.00	0.00	0.00	0.00
7,200.00	90.00	0.80	6,263.00	1,244.27	17.43	1,244.39	0.00	0.00	0.00	0.00
7,300.00	90.00	0.80	6,263.00	1,344.26	18.83	1,344.39	0.00	0.00	0.00	0.00
7,400.00	90.00	0.80	6,263.00	1,444.25	20.23	1,444.39	0.00	0.00	0.00	0.00
7,500.00	90.00	0.80	6,263.00	1,544.24	21.63	1,544.39	0.00	0.00	0.00	0.00
7,600.00	90.00	0.80	6,263.00	1,644.23	23.03	1,644.39	0.00	0.00	0.00	0.00
7,700.00	90.00	0.80	6,263.00	1,744.22	24.43	1,744.39	0.00	0.00	0.00	0.00
7,800.00	90.00	0.80	6,263.00	1,844.21	25.83	1,844.39	0.00	0.00	0.00	0.00
7,900.00	90.00	0.80	6,263.00	1,944.20	27.23	1,944.39	0.00	0.00	0.00	0.00
8,000.00	90.00	0.80	6,263.00	2,044.19	28.63	2,044.39	0.00	0.00	0.00	0.00
8,100.00	90.00	0.80	6,263.00	2,144.18	30.03	2,144.39	0.00	0.00	0.00	0.00
8,200.00	90.00	0.80	6,263.00	2,244.17	31.43	2,244.39	0.00	0.00	0.00	0.00
8,300.00	90.00	0.80	6,263.00	2,344.16	32.83	2,344.39	0.00	0.00	0.00	0.00
Hold Angle at 90.00°										
8,400.00	90.00	0.80	6,263.00	2,444.15	34.23	2,444.39	0.00	0.00	0.00	0.00
8,500.00	90.00	0.80	6,263.00	2,544.15	35.63	2,544.39	0.00	0.00	0.00	0.00
8,600.00	90.00	0.80	6,263.00	2,644.14	37.03	2,644.39	0.00	0.00	0.00	0.00
8,700.00	90.00	0.80	6,263.00	2,744.13	38.43	2,744.39	0.00	0.00	0.00	0.00
8,800.00	90.00	0.80	6,263.00	2,844.12	39.83	2,844.39	0.00	0.00	0.00	0.00
8,900.00	90.00	0.80	6,263.00	2,944.11	41.23	2,944.39	0.00	0.00	0.00	0.00
9,000.00	90.00	0.80	6,263.00	3,044.10	42.63	3,044.39	0.00	0.00	0.00	0.00
9,100.00	90.00	0.80	6,263.00	3,144.09	44.03	3,144.39	0.00	0.00	0.00	0.00
9,200.00	90.00	0.80	6,263.00	3,244.08	45.43	3,244.39	0.00	0.00	0.00	0.00
9,300.00	90.00	0.80	6,263.00	3,344.07	46.83	3,344.39	0.00	0.00	0.00	0.00
9,400.00	90.00	0.80	6,263.00	3,444.06	48.23	3,444.39	0.00	0.00	0.00	0.00
9,500.00	90.00	0.80	6,263.00	3,544.05	49.63	3,544.39	0.00	0.00	0.00	0.00
9,600.00	90.00	0.80	6,263.00	3,644.04	51.03	3,644.39	0.00	0.00	0.00	0.00
9,700.00	90.00	0.80	6,263.00	3,744.03	52.43	3,744.39	0.00	0.00	0.00	0.00
9,800.00	90.00	0.80	6,263.00	3,844.02	53.83	3,844.39	0.00	0.00	0.00	0.00
9,900.00	90.00	0.80	6,263.00	3,944.01	55.23	3,944.39	0.00	0.00	0.00	0.00
9,930.66	90.00	0.80	6,263.00	3,974.66	55.66	3,975.05	0.00	0.00	0.00	0.00
Total Depth at 9930.66ft										

Plan Report for State Whitetail 14-11-36HZ - Plan A - Rev1 Proposal**Plan Annotations**

Measured Depth (ft)	Vertical Depth (ft)	Local Coordinates		Comment
		+N/-S (ft)	+E/-W (ft)	
5,546.80	5,546.80	0.00	0.00	KOP - Begin 8.0°/100ft Build at 5546.80ft
6,671.80	6,263.00	716.12	10.03	End of Build at 6671.80ft
8,300.00	6,263.00	2,344.16	32.83	Hold Angle at 90.00°
9,930.66	6,263.00	3,974.66	55.66	Total Depth at 9930.66ft

Vertical Section Information

Angle Type	Target	Azimuth (°)	Origin Type	Origin		Start TVD (ft)
				+N/-S (ft)	+E/-W (ft)	
Target	State Whitetail 14-11-36H_PlanA - Rev1_BHL Tgt	0.80	Slot	0.00	0.00	0.00

Survey tool program

From (ft)	To (ft)	Survey/Plan	Survey Tool
0.00	9,930.66	Plan A - Rev1 Proposal	MWD

Casing Details

Measured Depth (ft)	Vertical Depth (ft)	Name	Casing Diameter (")	Hole Diameter (")
6,671.80	6,263.00	7" Csg	7	8-3/4

Targets associated with this wellbore

Target Name	TVD (ft)	+N/-S (ft)	+E/-W (ft)	Shape
State Whitetail 14-11-36H_PlanA - Rev1_BHL Tgt	6,263.00	3,974.67	55.66	Point
State Whitetail 14-11-36H_Sec. Line	0.00	0.00	0.00	Polygon

North Reference Sheet for Sec. 36-T6N-R62W - State Whitetail 14-11-36HZ - Plan A

All data is in US Feet unless otherwise stated. Directions and Coordinates are relative to True North Reference.

Vertical Depths are relative to KB @ 4696.00ft (Ensign 14). Northing and Easting are relative to State Whitetail 14-11-36HZ

Coordinate System is US State Plane 1983, Colorado Northern Zone using datum North American Datum 1983, ellipsoid GRS 1980

Projection method is Lambert Conformal Conic (2 parallel)

Central Meridian is -105.50°, Longitude Origin:0.000000°, Latitude Origin:40.783333°

False Easting: 3,000,000.00ft, False Northing: 1,000,000.00ft, Scale Reduction: 0.99996224

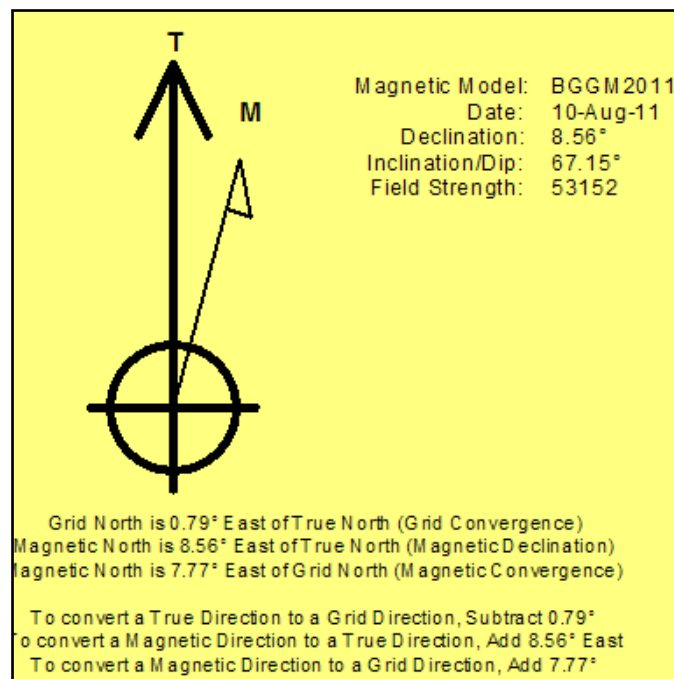
Grid Coordinates of Well: 1,405,169.37 ft N, 3,339,823.31 ft E

Geographical Coordinates of Well: 40° 26' 21.01" N, 104° 16' 44.80" W

Grid Convergence at Surface is: 0.79°

Based upon Minimum Curvature type calculations, at a Measured Depth of 9,930.66ft
the Bottom Hole Displacement is 3,975.05ft in the Direction of 0.80° (True).

Magnetic Convergence at surface is: -7.77° (10 August 2011, , BGGM2011)



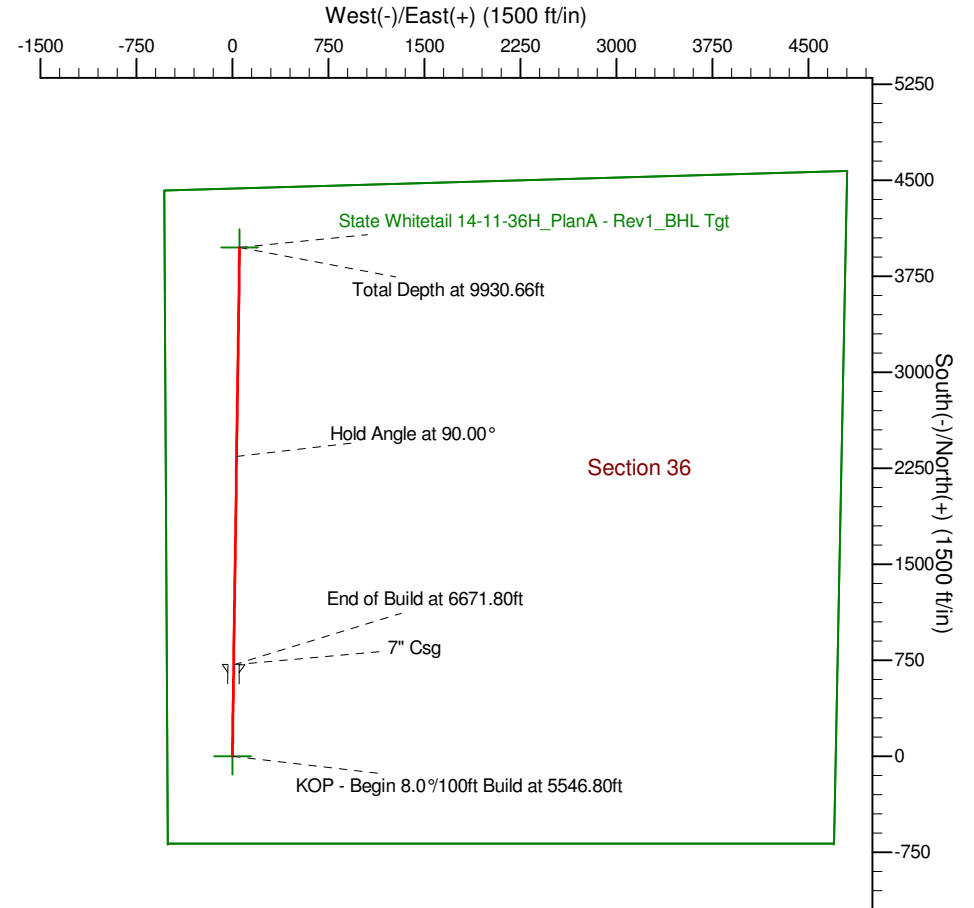
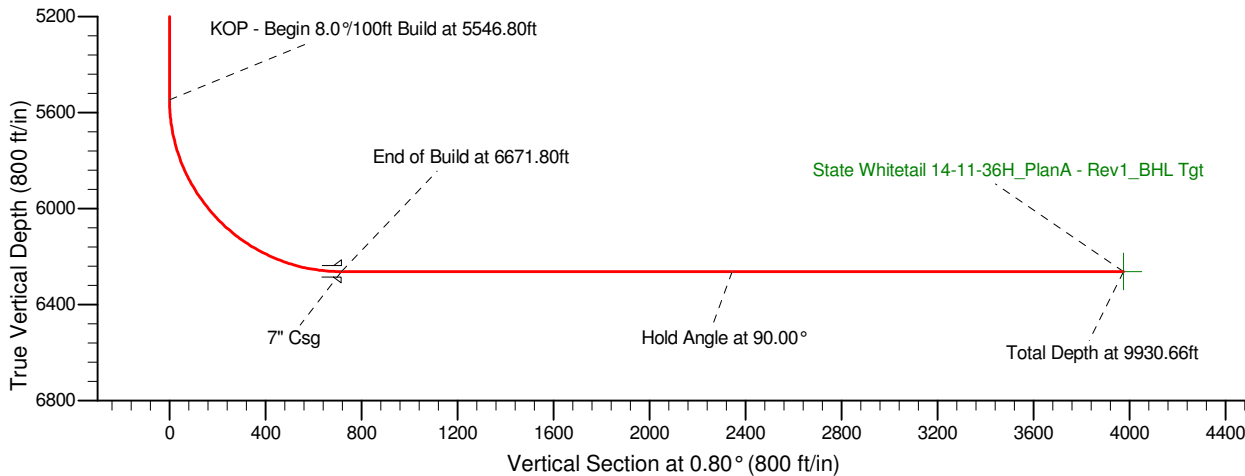
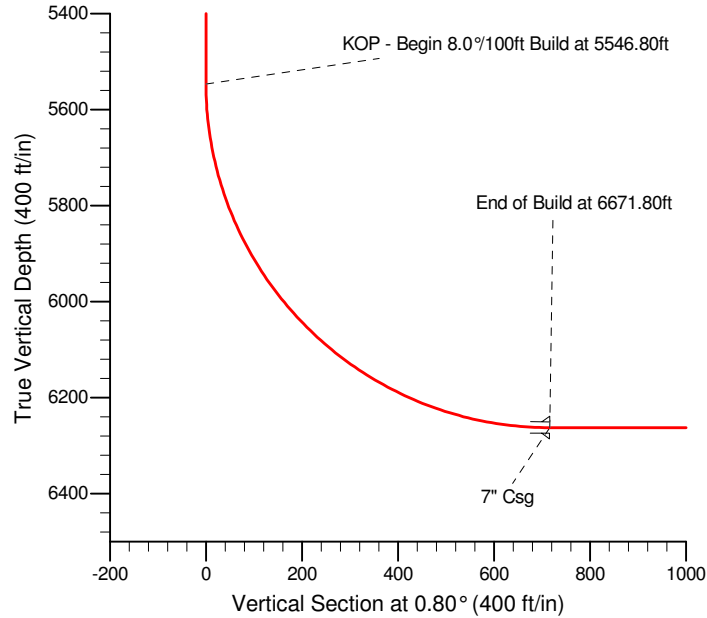
Project: Weld County, CO
Site: Sec. 36-T6N-R62W
Well: State Whitetail 14-11-36HZ
Wellbore: Plan A
Design: Plan A - Rev1 Proposal

Bonanza Creek Energy, Inc.

HALLIBURTON
Sperry Drilling

SECTION DETAILS

Sec	MD	Inc	Azi	TVD	+N-/S	+E-/W	DLeg	TFace	VSec	Target
1	0.00	0.00	0.00	0.00	0.00	0.00	0.00	0.00	0.00	
2	5546.80	0.00	0.00	5546.80	0.00	0.00	0.00	0.00	0.00	
3	6671.80	90.00	0.80	6263.00	716.13	10.03	8.00	0.80	716.20	
4	9930.66	90.00	0.80	6263.00	3974.67	55.66	0.00	0.00	3975.06	State Whitetail 14-11-36H_PlanA - Rev1_BHL Tgt



WELL DETAILS: State Whitetail 14-11-36HZ

Ground Level:	4680.00
Northing	1405169.37
Easting	3339823.31
Latitude	40.439170
Longitude	-104.279110

Plan: Plan A - Rev1 Proposal (State Whitetail 14-11-36HZ/Plan A)

Created By: Jay Lantz Date: 15:40, August 19 2011

Approved: _____ Date: _____