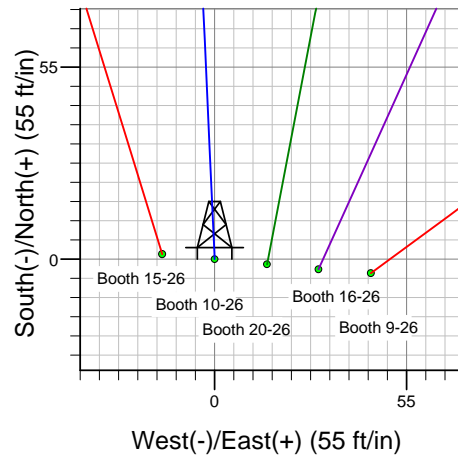
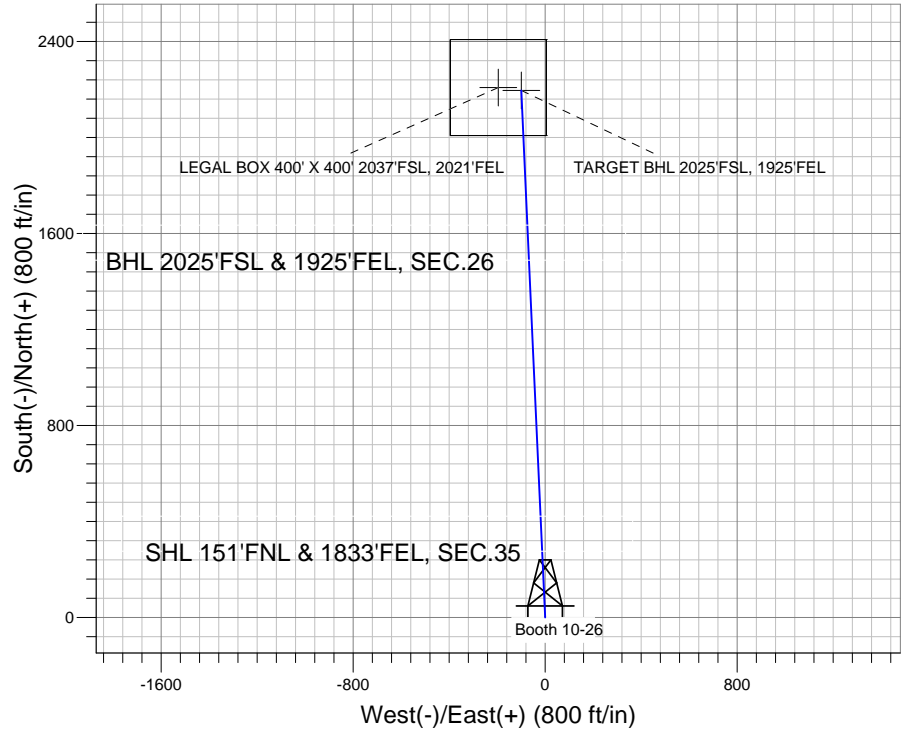
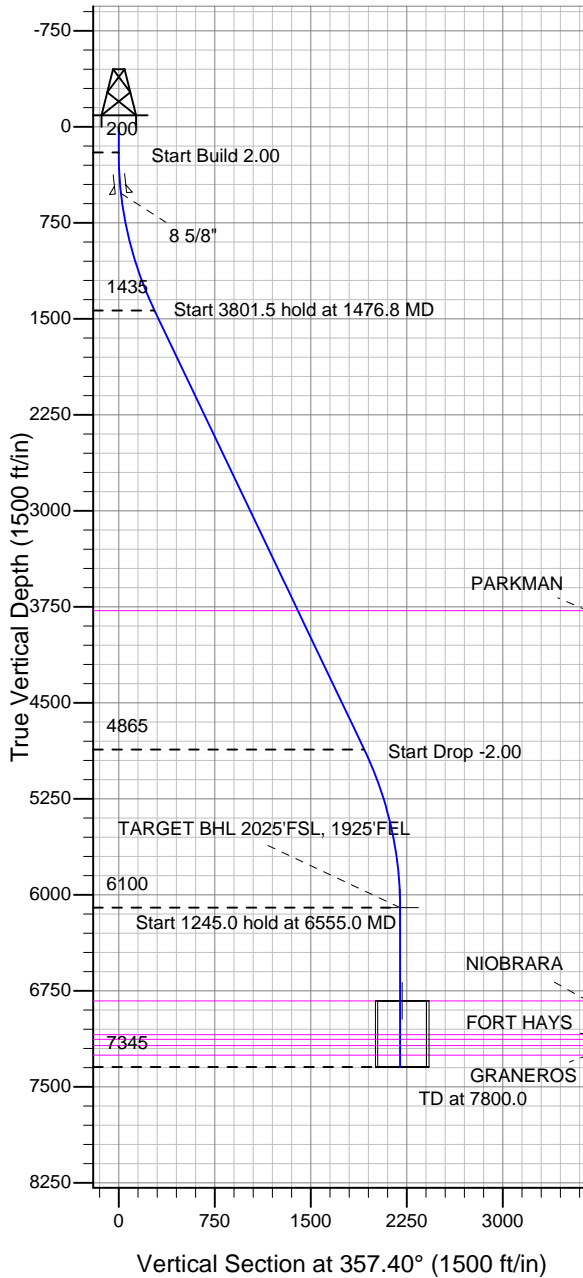


### Well Name: Booth 10-26

Surface Location: Booth 15-26 Pad Sec.35-T7N-R65W  
 North American Datum 1983 US State Plane 1983 Colorado Northern Zone  
 Ground Elevation: 4834.0  
 +N/-S +E/-W Northing Easting Latitude Longitude Slot  
 0.0 0.0 1439856.35 3242615.69 40.537528 -104.627096  
 Original Well Elev WELL @ 4844.0ft (Original Well Elev)

## BAYSWATER EXPLORATION & PRODUCTION



Booth 15-26 Pad Sec.35-T7N-R65W  
 Booth 10-26  
 Plan #1 (8-17-11)  
 13:22, August 18 2011



Azimuths to True North  
 Magnetic North: 8.78°

Magnetic Field  
 Strength: 53199.9snT  
 Dip Angle: 67.18°  
 Date: 8/17/2011  
 Model: IGRF2010

### WELLBORE TARGET DETAILS (LAT/LONG)

Name	TVD	+N/-S	+E/-W	Latitude	Longitude	Shape
TARGET BHL 2025'FSL, 1925'FEL	6100.0	2196.1	-99.8	40.543556	-104.627455	Point
LEGAL BOX 400' X 400' 2037'FSL, 2021'FEL	6829.0	2208.1	-195.8	40.543589	-104.627800	Rectangle (Sides: L400.0 W400.0)

### SECTION DETAILS

Sec	MD	Inc	Azi	TVD	+N/-S	+E/-W	DLeg	TFace	VSec	Target
1	0.0	0.00	0.00	0.0	0.0	0.0	0.00	0.00	0.0	
2	200.0	0.00	0.00	200.0	0.0	0.0	0.00	0.00	0.0	
3	1476.8	25.54	357.40	1434.9	279.6	-12.7	2.00	357.40	279.8	
4	5278.3	25.54	357.40	4865.1	1916.6	-87.1	0.00	0.00	1918.6	
5	6555.0	0.00	0.00	6100.0	2196.1	-99.8	2.00	180.00	2198.4	TARGET BHL 2025'FSL, 1925'FEL
6	7800.0	0.00	0.00	7345.0	2196.1	-99.8	0.00	0.00	2198.4	



## **Directional**

# **BAYSWATER EXPLORATION & PRODUCTION**

**SEC.35-T7N-R65W**

**Booth 15-26 Pad Sec.35-T7N-R65W**

**Booth 10-26**

**Wellbore #1**

**Plan: Plan #1 (8-17-11)**

## **Standard Planning Report**

**18 August, 2011**

Plan Sections										
Measured Depth (ft)	Inclination (°)	Azimuth (°)	Vertical Depth (ft)	+N/-S (ft)	+E/-W (ft)	Dogleg Rate (°/100ft)	Build Rate (°/100ft)	Turn Rate (°/100ft)	TFO (°)	Target
0.0	0.00	0.00	0.0	0.0	0.0	0.00	0.00	0.00	0.00	
200.0	0.00	0.00	200.0	0.0	0.0	0.00	0.00	0.00	0.00	
1,476.8	25.54	357.40	1,434.9	279.6	-12.7	2.00	2.00	0.00	357.40	
5,278.3	25.54	357.40	4,865.1	1,916.6	-87.1	0.00	0.00	0.00	0.00	
6,555.0	0.00	0.00	6,100.0	2,196.1	-99.8	2.00	-2.00	0.00	180.00	TARGET BHL 2025
7,800.0	0.00	0.00	7,345.0	2,196.1	-99.8	0.00	0.00	0.00	0.00	

<b>Database:</b>	Landmark	<b>Local Co-ordinate Reference:</b>	Well Booth 10-26
<b>Company:</b>	BAYSWATER EXPLORATION & PRODUCTION	<b>TVD Reference:</b>	WELL @ 4844.0ft (Original Well Elev)
<b>Project:</b>	SEC.35-T7N-R65W	<b>MD Reference:</b>	WELL @ 4844.0ft (Original Well Elev)
<b>Site:</b>	Booth 15-26 Pad Sec.35-T7N-R65W	<b>North Reference:</b>	True
<b>Well:</b>	Booth 10-26	<b>Survey Calculation Method:</b>	Minimum Curvature
<b>Wellbore:</b>	Wellbore #1		
<b>Design:</b>	Plan #1 (8-17-11)		

Planned Survey									
Measured Depth (ft)	Inclination (°)	Azimuth (°)	Vertical Depth (ft)	+N/-S (ft)	+E/-W (ft)	Vertical Section (ft)	Dogleg Rate (°/100ft)	Build Rate (°/100ft)	Turn Rate (°/100ft)
0.0	0.00	0.00	0.0	0.0	0.0	0.0	0.00	0.00	0.00
40.0	0.00	0.00	40.0	0.0	0.0	0.0	0.00	0.00	0.00
80.0	0.00	0.00	80.0	0.0	0.0	0.0	0.00	0.00	0.00
120.0	0.00	0.00	120.0	0.0	0.0	0.0	0.00	0.00	0.00
160.0	0.00	0.00	160.0	0.0	0.0	0.0	0.00	0.00	0.00
200.0	0.00	0.00	200.0	0.0	0.0	0.0	0.00	0.00	0.00
240.0	0.80	357.40	240.0	0.3	0.0	0.3	2.00	2.00	0.00
280.0	1.60	357.40	280.0	1.1	-0.1	1.1	2.00	2.00	0.00
320.0	2.40	357.40	320.0	2.5	-0.1	2.5	2.00	2.00	0.00
360.0	3.20	357.40	359.9	4.5	-0.2	4.5	2.00	2.00	0.00
400.0	4.00	357.40	399.8	7.0	-0.3	7.0	2.00	2.00	0.00
440.0	4.80	357.40	439.7	10.0	-0.5	10.0	2.00	2.00	0.00
480.0	5.60	357.40	479.6	13.7	-0.6	13.7	2.00	2.00	0.00
520.0	6.40	357.40	519.3	17.8	-0.8	17.9	2.00	2.00	0.00
520.7	6.41	357.40	520.0	17.9	-0.8	17.9	2.00	2.00	0.00
8 5/8"									
560.0	7.20	357.40	559.1	22.6	-1.0	22.6	2.00	2.00	0.00
600.0	8.00	357.40	598.7	27.9	-1.3	27.9	2.00	2.00	0.00
640.0	8.80	357.40	638.3	33.7	-1.5	33.7	2.00	2.00	0.00
680.0	9.60	357.40	677.8	40.1	-1.8	40.1	2.00	2.00	0.00
720.0	10.40	357.40	717.1	47.0	-2.1	47.1	2.00	2.00	0.00
760.0	11.20	357.40	756.4	54.5	-2.5	54.6	2.00	2.00	0.00
800.0	12.00	357.40	795.6	62.5	-2.8	62.6	2.00	2.00	0.00
840.0	12.80	357.40	834.7	71.1	-3.2	71.2	2.00	2.00	0.00
880.0	13.60	357.40	873.6	80.2	-3.6	80.3	2.00	2.00	0.00
920.0	14.40	357.40	912.4	89.9	-4.1	90.0	2.00	2.00	0.00
960.0	15.20	357.40	951.1	100.1	-4.5	100.2	2.00	2.00	0.00
1,000.0	16.00	357.40	989.6	110.9	-5.0	111.0	2.00	2.00	0.00
1,040.0	16.80	357.40	1,028.0	122.1	-5.5	122.3	2.00	2.00	0.00
1,080.0	17.60	357.40	1,066.2	134.0	-6.1	134.1	2.00	2.00	0.00
1,120.0	18.40	357.40	1,104.3	146.3	-6.6	146.5	2.00	2.00	0.00
1,160.0	19.20	357.40	1,142.1	159.2	-7.2	159.3	2.00	2.00	0.00
1,200.0	20.00	357.40	1,179.8	172.6	-7.8	172.8	2.00	2.00	0.00
1,240.0	20.80	357.40	1,217.3	186.5	-8.5	186.7	2.00	2.00	0.00
1,280.0	21.60	357.40	1,254.6	201.0	-9.1	201.2	2.00	2.00	0.00
1,320.0	22.40	357.40	1,291.7	215.9	-9.8	216.2	2.00	2.00	0.00
1,360.0	23.20	357.40	1,328.6	231.4	-10.5	231.7	2.00	2.00	0.00
1,400.0	24.00	357.40	1,365.2	247.4	-11.2	247.7	2.00	2.00	0.00
1,440.0	24.80	357.40	1,401.6	263.9	-12.0	264.2	2.00	2.00	0.00
1,476.8	25.54	357.40	1,434.9	279.6	-12.7	279.8	2.00	2.00	0.00
1,480.0	25.54	357.40	1,437.8	280.9	-12.8	281.2	0.00	0.00	0.00
1,520.0	25.54	357.40	1,473.9	298.2	-13.5	298.5	0.00	0.00	0.00
1,560.0	25.54	357.40	1,510.0	315.4	-14.3	315.7	0.00	0.00	0.00
1,600.0	25.54	357.40	1,546.1	332.6	-15.1	333.0	0.00	0.00	0.00
1,640.0	25.54	357.40	1,582.2	349.8	-15.9	350.2	0.00	0.00	0.00
1,680.0	25.54	357.40	1,618.3	367.1	-16.7	367.4	0.00	0.00	0.00
1,720.0	25.54	357.40	1,654.4	384.3	-17.5	384.7	0.00	0.00	0.00
1,760.0	25.54	357.40	1,690.5	401.5	-18.2	401.9	0.00	0.00	0.00
1,800.0	25.54	357.40	1,726.6	418.7	-19.0	419.2	0.00	0.00	0.00
1,840.0	25.54	357.40	1,762.7	436.0	-19.8	436.4	0.00	0.00	0.00
1,880.0	25.54	357.40	1,798.8	453.2	-20.6	453.7	0.00	0.00	0.00
1,920.0	25.54	357.40	1,834.9	470.4	-21.4	470.9	0.00	0.00	0.00
1,960.0	25.54	357.40	1,870.9	487.6	-22.2	488.1	0.00	0.00	0.00

<b>Database:</b>	Landmark	<b>Local Co-ordinate Reference:</b>	Well Booth 10-26
<b>Company:</b>	BAYSWATER EXPLORATION & PRODUCTION	<b>TVD Reference:</b>	WELL @ 4844.0ft (Original Well Elev)
<b>Project:</b>	SEC.35-T7N-R65W	<b>MD Reference:</b>	WELL @ 4844.0ft (Original Well Elev)
<b>Site:</b>	Booth 15-26 Pad Sec.35-T7N-R65W	<b>North Reference:</b>	True
<b>Well:</b>	Booth 10-26	<b>Survey Calculation Method:</b>	Minimum Curvature
<b>Wellbore:</b>	Wellbore #1		
<b>Design:</b>	Plan #1 (8-17-11)		

Planned Survey										
Measured Depth (ft)	Inclination (°)	Azimuth (°)	Vertical Depth (ft)	+N/-S (ft)	+E/-W (ft)	Vertical Section (ft)	Dogleg Rate (°/100ft)	Build Rate (°/100ft)	Turn Rate (°/100ft)	
2,000.0	25.54	357.40	1,907.0	504.9	-22.9	505.4	0.00	0.00	0.00	
2,040.0	25.54	357.40	1,943.1	522.1	-23.7	522.6	0.00	0.00	0.00	
2,080.0	25.54	357.40	1,979.2	539.3	-24.5	539.9	0.00	0.00	0.00	
2,120.0	25.54	357.40	2,015.3	556.5	-25.3	557.1	0.00	0.00	0.00	
2,160.0	25.54	357.40	2,051.4	573.8	-26.1	574.4	0.00	0.00	0.00	
2,200.0	25.54	357.40	2,087.5	591.0	-26.9	591.6	0.00	0.00	0.00	
2,240.0	25.54	357.40	2,123.6	608.2	-27.6	608.8	0.00	0.00	0.00	
2,280.0	25.54	357.40	2,159.7	625.4	-28.4	626.1	0.00	0.00	0.00	
2,320.0	25.54	357.40	2,195.8	642.7	-29.2	643.3	0.00	0.00	0.00	
2,360.0	25.54	357.40	2,231.9	659.9	-30.0	660.6	0.00	0.00	0.00	
2,400.0	25.54	357.40	2,268.0	677.1	-30.8	677.8	0.00	0.00	0.00	
2,440.0	25.54	357.40	2,304.1	694.3	-31.5	695.1	0.00	0.00	0.00	
2,480.0	25.54	357.40	2,340.2	711.6	-32.3	712.3	0.00	0.00	0.00	
2,520.0	25.54	357.40	2,376.2	728.8	-33.1	729.5	0.00	0.00	0.00	
2,560.0	25.54	357.40	2,412.3	746.0	-33.9	746.8	0.00	0.00	0.00	
2,600.0	25.54	357.40	2,448.4	763.2	-34.7	764.0	0.00	0.00	0.00	
2,640.0	25.54	357.40	2,484.5	780.5	-35.5	781.3	0.00	0.00	0.00	
2,680.0	25.54	357.40	2,520.6	797.7	-36.2	798.5	0.00	0.00	0.00	
2,720.0	25.54	357.40	2,556.7	814.9	-37.0	815.8	0.00	0.00	0.00	
2,760.0	25.54	357.40	2,592.8	832.1	-37.8	833.0	0.00	0.00	0.00	
2,800.0	25.54	357.40	2,628.9	849.4	-38.6	850.2	0.00	0.00	0.00	
2,840.0	25.54	357.40	2,665.0	866.6	-39.4	867.5	0.00	0.00	0.00	
2,880.0	25.54	357.40	2,701.1	883.8	-40.2	884.7	0.00	0.00	0.00	
2,920.0	25.54	357.40	2,737.2	901.0	-40.9	902.0	0.00	0.00	0.00	
2,960.0	25.54	357.40	2,773.3	918.3	-41.7	919.2	0.00	0.00	0.00	
3,000.0	25.54	357.40	2,809.4	935.5	-42.5	936.5	0.00	0.00	0.00	
3,040.0	25.54	357.40	2,845.5	952.7	-43.3	953.7	0.00	0.00	0.00	
3,080.0	25.54	357.40	2,881.5	969.9	-44.1	970.9	0.00	0.00	0.00	
3,120.0	25.54	357.40	2,917.6	987.2	-44.9	988.2	0.00	0.00	0.00	
3,160.0	25.54	357.40	2,953.7	1,004.4	-45.6	1,005.4	0.00	0.00	0.00	
3,200.0	25.54	357.40	2,989.8	1,021.6	-46.4	1,022.7	0.00	0.00	0.00	
3,240.0	25.54	357.40	3,025.9	1,038.8	-47.2	1,039.9	0.00	0.00	0.00	
3,280.0	25.54	357.40	3,062.0	1,056.1	-48.0	1,057.2	0.00	0.00	0.00	
3,320.0	25.54	357.40	3,098.1	1,073.3	-48.8	1,074.4	0.00	0.00	0.00	
3,360.0	25.54	357.40	3,134.2	1,090.5	-49.5	1,091.6	0.00	0.00	0.00	
3,400.0	25.54	357.40	3,170.3	1,107.7	-50.3	1,108.9	0.00	0.00	0.00	
3,440.0	25.54	357.40	3,206.4	1,125.0	-51.1	1,126.1	0.00	0.00	0.00	
3,480.0	25.54	357.40	3,242.5	1,142.2	-51.9	1,143.4	0.00	0.00	0.00	
3,520.0	25.54	357.40	3,278.6	1,159.4	-52.7	1,160.6	0.00	0.00	0.00	
3,560.0	25.54	357.40	3,314.7	1,176.7	-53.5	1,177.9	0.00	0.00	0.00	
3,600.0	25.54	357.40	3,350.7	1,193.9	-54.2	1,195.1	0.00	0.00	0.00	
3,640.0	25.54	357.40	3,386.8	1,211.1	-55.0	1,212.4	0.00	0.00	0.00	
3,680.0	25.54	357.40	3,422.9	1,228.3	-55.8	1,229.6	0.00	0.00	0.00	
3,720.0	25.54	357.40	3,459.0	1,245.6	-56.6	1,246.8	0.00	0.00	0.00	
3,760.0	25.54	357.40	3,495.1	1,262.8	-57.4	1,264.1	0.00	0.00	0.00	
3,800.0	25.54	357.40	3,531.2	1,280.0	-58.2	1,281.3	0.00	0.00	0.00	
3,840.0	25.54	357.40	3,567.3	1,297.2	-58.9	1,298.6	0.00	0.00	0.00	
3,880.0	25.54	357.40	3,603.4	1,314.5	-59.7	1,315.8	0.00	0.00	0.00	
3,920.0	25.54	357.40	3,639.5	1,331.7	-60.5	1,333.1	0.00	0.00	0.00	
3,960.0	25.54	357.40	3,675.6	1,348.9	-61.3	1,350.3	0.00	0.00	0.00	
4,000.0	25.54	357.40	3,711.7	1,366.1	-62.1	1,367.5	0.00	0.00	0.00	
4,040.0	25.54	357.40	3,747.8	1,383.4	-62.8	1,384.8	0.00	0.00	0.00	
4,074.6	25.54	357.40	3,779.0	1,398.3	-63.5	1,399.7	0.00	0.00	0.00	

<b>Database:</b>	Landmark	<b>Local Co-ordinate Reference:</b>	Well Booth 10-26
<b>Company:</b>	BAYSWATER EXPLORATION & PRODUCTION	<b>TVD Reference:</b>	WELL @ 4844.0ft (Original Well Elev)
<b>Project:</b>	SEC.35-T7N-R65W	<b>MD Reference:</b>	WELL @ 4844.0ft (Original Well Elev)
<b>Site:</b>	Booth 15-26 Pad Sec.35-T7N-R65W	<b>North Reference:</b>	True
<b>Well:</b>	Booth 10-26	<b>Survey Calculation Method:</b>	Minimum Curvature
<b>Wellbore:</b>	Wellbore #1		
<b>Design:</b>	Plan #1 (8-17-11)		

## Planned Survey

Measured Depth (ft)	Inclination (°)	Azimuth (°)	Vertical Depth (ft)	+N/-S (ft)	+E/-W (ft)	Vertical Section (ft)	Dogleg Rate (°/100ft)	Build Rate (°/100ft)	Turn Rate (°/100ft)
<b>PARKMAN</b>									
4,080.0	25.54	357.40	3,783.9	1,400.6	-63.6	1,402.0	0.00	0.00	0.00
4,120.0	25.54	357.40	3,819.9	1,417.8	-64.4	1,419.3	0.00	0.00	0.00
4,160.0	25.54	357.40	3,856.0	1,435.0	-65.2	1,436.5	0.00	0.00	0.00
4,200.0	25.54	357.40	3,892.1	1,452.3	-66.0	1,453.8	0.00	0.00	0.00
4,240.0	25.54	357.40	3,928.2	1,469.5	-66.8	1,471.0	0.00	0.00	0.00
4,280.0	25.54	357.40	3,964.3	1,486.7	-67.5	1,488.2	0.00	0.00	0.00
4,320.0	25.54	357.40	4,000.4	1,503.9	-68.3	1,505.5	0.00	0.00	0.00
4,360.0	25.54	357.40	4,036.5	1,521.2	-69.1	1,522.7	0.00	0.00	0.00
4,400.0	25.54	357.40	4,072.6	1,538.4	-69.9	1,540.0	0.00	0.00	0.00
4,440.0	25.54	357.40	4,108.7	1,555.6	-70.7	1,557.2	0.00	0.00	0.00
4,480.0	25.54	357.40	4,144.8	1,572.8	-71.5	1,574.5	0.00	0.00	0.00
4,520.0	25.54	357.40	4,180.9	1,590.1	-72.2	1,591.7	0.00	0.00	0.00
4,560.0	25.54	357.40	4,217.0	1,607.3	-73.0	1,608.9	0.00	0.00	0.00
4,600.0	25.54	357.40	4,253.1	1,624.5	-73.8	1,626.2	0.00	0.00	0.00
4,640.0	25.54	357.40	4,289.2	1,641.7	-74.6	1,643.4	0.00	0.00	0.00
4,680.0	25.54	357.40	4,325.2	1,659.0	-75.4	1,660.7	0.00	0.00	0.00
4,720.0	25.54	357.40	4,361.3	1,676.2	-76.2	1,677.9	0.00	0.00	0.00
4,760.0	25.54	357.40	4,397.4	1,693.4	-76.9	1,695.2	0.00	0.00	0.00
4,800.0	25.54	357.40	4,433.5	1,710.6	-77.7	1,712.4	0.00	0.00	0.00
4,840.0	25.54	357.40	4,469.6	1,727.9	-78.5	1,729.6	0.00	0.00	0.00
4,880.0	25.54	357.40	4,505.7	1,745.1	-79.3	1,746.9	0.00	0.00	0.00
4,920.0	25.54	357.40	4,541.8	1,762.3	-80.1	1,764.1	0.00	0.00	0.00
4,960.0	25.54	357.40	4,577.9	1,779.5	-80.8	1,781.4	0.00	0.00	0.00
5,000.0	25.54	357.40	4,614.0	1,796.8	-81.6	1,798.6	0.00	0.00	0.00
5,040.0	25.54	357.40	4,650.1	1,814.0	-82.4	1,815.9	0.00	0.00	0.00
5,080.0	25.54	357.40	4,686.2	1,831.2	-83.2	1,833.1	0.00	0.00	0.00
5,120.0	25.54	357.40	4,722.3	1,848.4	-84.0	1,850.3	0.00	0.00	0.00
5,160.0	25.54	357.40	4,758.4	1,865.7	-84.8	1,867.6	0.00	0.00	0.00
5,200.0	25.54	357.40	4,794.5	1,882.9	-85.5	1,884.8	0.00	0.00	0.00
5,240.0	25.54	357.40	4,830.5	1,900.1	-86.3	1,902.1	0.00	0.00	0.00
5,278.3	25.54	357.40	4,865.1	1,916.6	-87.1	1,918.6	0.00	0.00	0.00
5,280.0	25.50	357.40	4,866.6	1,917.3	-87.1	1,919.3	2.00	-2.00	0.00
5,320.0	24.70	357.40	4,902.9	1,934.3	-87.9	1,936.3	2.00	-2.00	0.00
5,360.0	23.90	357.40	4,939.3	1,950.7	-88.6	1,952.7	2.00	-2.00	0.00
5,400.0	23.10	357.40	4,976.0	1,966.7	-89.4	1,968.7	2.00	-2.00	0.00
5,440.0	22.30	357.40	5,012.9	1,982.1	-90.1	1,984.1	2.00	-2.00	0.00
5,480.0	21.50	357.40	5,050.0	1,997.0	-90.7	1,999.1	2.00	-2.00	0.00
5,520.0	20.70	357.40	5,087.3	2,011.4	-91.4	2,013.5	2.00	-2.00	0.00
5,560.0	19.90	357.40	5,124.8	2,025.2	-92.0	2,027.3	2.00	-2.00	0.00
5,600.0	19.10	357.40	5,162.5	2,038.6	-92.6	2,040.7	2.00	-2.00	0.00
5,640.0	18.30	357.40	5,200.4	2,051.4	-93.2	2,053.5	2.00	-2.00	0.00
5,680.0	17.50	357.40	5,238.5	2,063.7	-93.8	2,065.8	2.00	-2.00	0.00
5,720.0	16.70	357.40	5,276.7	2,075.4	-94.3	2,077.6	2.00	-2.00	0.00
5,760.0	15.90	357.40	5,315.1	2,086.6	-94.8	2,088.8	2.00	-2.00	0.00
5,800.0	15.10	357.40	5,353.7	2,097.3	-95.3	2,099.5	2.00	-2.00	0.00
5,840.0	14.30	357.40	5,392.4	2,107.5	-95.7	2,109.6	2.00	-2.00	0.00
5,880.0	13.50	357.40	5,431.2	2,117.1	-96.2	2,119.2	2.00	-2.00	0.00
5,920.0	12.70	357.40	5,470.1	2,126.1	-96.6	2,128.3	2.00	-2.00	0.00
5,960.0	11.90	357.40	5,509.2	2,134.6	-97.0	2,136.8	2.00	-2.00	0.00
6,000.0	11.10	357.40	5,548.4	2,142.6	-97.3	2,144.8	2.00	-2.00	0.00
6,040.0	10.30	357.40	5,587.7	2,150.0	-97.7	2,152.2	2.00	-2.00	0.00

<b>Database:</b>	Landmark	<b>Local Co-ordinate Reference:</b>	Well Booth 10-26
<b>Company:</b>	BAYSWATER EXPLORATION & PRODUCTION	<b>TVD Reference:</b>	WELL @ 4844.0ft (Original Well Elev)
<b>Project:</b>	SEC.35-T7N-R65W	<b>MD Reference:</b>	WELL @ 4844.0ft (Original Well Elev)
<b>Site:</b>	Booth 15-26 Pad Sec.35-T7N-R65W	<b>North Reference:</b>	True
<b>Well:</b>	Booth 10-26	<b>Survey Calculation Method:</b>	Minimum Curvature
<b>Wellbore:</b>	Wellbore #1		
<b>Design:</b>	Plan #1 (8-17-11)		

Planned Survey									
Measured Depth (ft)	Inclination (°)	Azimuth (°)	Vertical Depth (ft)	+N/-S (ft)	+E/-W (ft)	Vertical Section (ft)	Dogleg Rate (°/100ft)	Build Rate (°/100ft)	Turn Rate (°/100ft)
6,080.0	9.50	357.40	5,627.1	2,156.9	-98.0	2,159.1	2.00	-2.00	0.00
6,120.0	8.70	357.40	5,666.6	2,163.2	-98.3	2,165.4	2.00	-2.00	0.00
6,160.0	7.90	357.40	5,706.2	2,169.0	-98.5	2,171.2	2.00	-2.00	0.00
6,200.0	7.10	357.40	5,745.9	2,174.2	-98.8	2,176.4	2.00	-2.00	0.00
6,240.0	6.30	357.40	5,785.6	2,178.9	-99.0	2,181.1	2.00	-2.00	0.00
6,280.0	5.50	357.40	5,825.4	2,183.0	-99.2	2,185.2	2.00	-2.00	0.00
6,320.0	4.70	357.40	5,865.2	2,186.5	-99.3	2,188.8	2.00	-2.00	0.00
6,360.0	3.90	357.40	5,905.1	2,189.5	-99.5	2,191.8	2.00	-2.00	0.00
6,400.0	3.10	357.40	5,945.0	2,191.9	-99.6	2,194.2	2.00	-2.00	0.00
6,440.0	2.30	357.40	5,985.0	2,193.8	-99.7	2,196.1	2.00	-2.00	0.00
6,480.0	1.50	357.40	6,025.0	2,195.2	-99.7	2,197.4	2.00	-2.00	0.00
6,520.0	0.70	357.40	6,065.0	2,195.9	-99.8	2,198.2	2.00	-2.00	0.00
6,555.0	0.00	0.00	6,100.0	2,196.1	-99.8	2,198.4	2.00	-2.00	0.00
TARGET BHL 2025'FSL, 1925'FEL									
6,560.0	0.00	0.00	6,105.0	2,196.1	-99.8	2,198.4	0.00	0.00	0.00
6,600.0	0.00	0.00	6,145.0	2,196.1	-99.8	2,198.4	0.00	0.00	0.00
6,640.0	0.00	0.00	6,185.0	2,196.1	-99.8	2,198.4	0.00	0.00	0.00
6,680.0	0.00	0.00	6,225.0	2,196.1	-99.8	2,198.4	0.00	0.00	0.00
6,720.0	0.00	0.00	6,265.0	2,196.1	-99.8	2,198.4	0.00	0.00	0.00
6,760.0	0.00	0.00	6,305.0	2,196.1	-99.8	2,198.4	0.00	0.00	0.00
6,800.0	0.00	0.00	6,345.0	2,196.1	-99.8	2,198.4	0.00	0.00	0.00
6,840.0	0.00	0.00	6,385.0	2,196.1	-99.8	2,198.4	0.00	0.00	0.00
6,880.0	0.00	0.00	6,425.0	2,196.1	-99.8	2,198.4	0.00	0.00	0.00
6,920.0	0.00	0.00	6,465.0	2,196.1	-99.8	2,198.4	0.00	0.00	0.00
6,960.0	0.00	0.00	6,505.0	2,196.1	-99.8	2,198.4	0.00	0.00	0.00
7,000.0	0.00	0.00	6,545.0	2,196.1	-99.8	2,198.4	0.00	0.00	0.00
7,040.0	0.00	0.00	6,585.0	2,196.1	-99.8	2,198.4	0.00	0.00	0.00
7,080.0	0.00	0.00	6,625.0	2,196.1	-99.8	2,198.4	0.00	0.00	0.00
7,120.0	0.00	0.00	6,665.0	2,196.1	-99.8	2,198.4	0.00	0.00	0.00
7,160.0	0.00	0.00	6,705.0	2,196.1	-99.8	2,198.4	0.00	0.00	0.00
7,200.0	0.00	0.00	6,745.0	2,196.1	-99.8	2,198.4	0.00	0.00	0.00
7,240.0	0.00	0.00	6,785.0	2,196.1	-99.8	2,198.4	0.00	0.00	0.00
7,280.0	0.00	0.00	6,825.0	2,196.1	-99.8	2,198.4	0.00	0.00	0.00
7,284.0	0.00	0.00	6,829.0	2,196.1	-99.8	2,198.4	0.00	0.00	0.00
NIOBRARA - LEGAL BOX 400' X 400' 2037'FSL, 2021'FEL									
7,320.0	0.00	0.00	6,865.0	2,196.1	-99.8	2,198.4	0.00	0.00	0.00
7,360.0	0.00	0.00	6,905.0	2,196.1	-99.8	2,198.4	0.00	0.00	0.00
7,400.0	0.00	0.00	6,945.0	2,196.1	-99.8	2,198.4	0.00	0.00	0.00
7,440.0	0.00	0.00	6,985.0	2,196.1	-99.8	2,198.4	0.00	0.00	0.00
7,480.0	0.00	0.00	7,025.0	2,196.1	-99.8	2,198.4	0.00	0.00	0.00
7,520.0	0.00	0.00	7,065.0	2,196.1	-99.8	2,198.4	0.00	0.00	0.00
7,548.0	0.00	0.00	7,093.0	2,196.1	-99.8	2,198.4	0.00	0.00	0.00
FORT HAYS									
7,560.0	0.00	0.00	7,105.0	2,196.1	-99.8	2,198.4	0.00	0.00	0.00
7,584.0	0.00	0.00	7,129.0	2,196.1	-99.8	2,198.4	0.00	0.00	0.00
CODELL									
7,600.0	0.00	0.00	7,145.0	2,196.1	-99.8	2,198.4	0.00	0.00	0.00
7,632.0	0.00	0.00	7,177.0	2,196.1	-99.8	2,198.4	0.00	0.00	0.00
GREENHORN									
7,640.0	0.00	0.00	7,185.0	2,196.1	-99.8	2,198.4	0.00	0.00	0.00
7,680.0	0.00	0.00	7,225.0	2,196.1	-99.8	2,198.4	0.00	0.00	0.00
7,707.0	0.00	0.00	7,252.0	2,196.1	-99.8	2,198.4	0.00	0.00	0.00

Formations						
	Measured Depth (ft)	Vertical Depth (ft)	Name	Lithology	Dip (°)	Dip Direction (°)
	4,074.6	3,779.0	PARKMAN		0.00	
	7,284.0	6,829.0	NIOBRARA		0.00	
	7,548.0	7,093.0	FORT HAYS		0.00	
	7,584.0	7,129.0	CODELL		0.00	
	7,632.0	7,177.0	GREENHORN		0.00	
	7,707.0	7,252.0	GRANEROS		0.00	





## **Directional**

# **BAYSWATER EXPLORATION & PRODUCTION**

**SEC.35-T7N-R65W**

**Booth 15-26 Pad Sec.35-T7N-R65W**

**Booth 10-26**

**Wellbore #1**

**Plan #1 (8-17-11)**

## **Anticollision Report**

**18 August, 2011**

<b>Company:</b>	BAYSWATER EXPLORATION & PRODUCTION	<b>Local Co-ordinate Reference:</b>	Well Booth 10-26
<b>Project:</b>	SEC.35-T7N-R65W	<b>TVD Reference:</b>	WELL @ 4844.0ft (Original Well Elev)
<b>Reference Site:</b>	Booth 15-26 Pad Sec.35-T7N-R65W	<b>MD Reference:</b>	WELL @ 4844.0ft (Original Well Elev)
<b>Site Error:</b>	0.0ft	<b>North Reference:</b>	True
<b>Reference Well:</b>	Booth 10-26	<b>Survey Calculation Method:</b>	Minimum Curvature
<b>Well Error:</b>	0.0ft	<b>Output errors are at</b>	2.00 sigma
<b>Reference Wellbore</b>	Wellbore #1	<b>Database:</b>	Landmark
<b>Reference Design:</b>	Plan #1 (8-17-11)	<b>Offset TVD Reference:</b>	Offset Datum

<b>Reference</b>	Plan #1 (8-17-11)		
<b>Filter type:</b>	NO GLOBAL FILTER: Using user defined selection & filtering criteria		
<b>Interpolation Method:</b>	Stations	<b>Error Model:</b>	ISCWSA
<b>Depth Range:</b>	Unlimited	<b>Scan Method:</b>	Closest Approach 3D
<b>Results Limited by:</b>	Maximum center-center distance of 10,000.0ft	<b>Error Surface:</b>	Elliptical Conic
<b>Warning Levels Evaluated at:</b>	2.00 Sigma		

<b>Survey Tool Program</b>	<b>Date</b> 8/18/2011			
<b>From (ft)</b>	<b>To (ft)</b>	<b>Survey (Wellbore)</b>	<b>Tool Name</b>	<b>Description</b>
0.0	7,800.0	Plan #1 (8-17-11) (Wellbore #1)	MWD	MWD - Standard

<b>Summary</b>						
<b>Site Name</b>	<b>Reference Measured Depth (ft)</b>	<b>Offset Measured Depth (ft)</b>	<b>Distance Between Centres (ft)</b>	<b>Distance Between Ellipses (ft)</b>	<b>Separation Factor</b>	<b>Warning</b>
<b>Offset Well - Wellbore - Design</b>						
Booth 15-26 Pad Sec.35-T7N-R65W						
Booth 15-26 - Wellbore #1 - Plan #1 (8-17-11)	310.7	310.6	14.9	13.8	12.737	CC, ES
Booth 15-26 - Wellbore #1 - Plan #1 (8-17-11)	500.0	499.5	20.2	18.1	9.812	SF
Booth 20-26 - Wellbore #1 - Plan #1 (8-17-11)	200.0	200.0	15.1	14.4	22.364	CC
Booth 20-26 - Wellbore #1 - Plan #1 (8-17-11)	300.0	300.0	15.4	14.3	13.723	ES
Booth 20-26 - Wellbore #1 - Plan #1 (8-17-11)	400.0	399.8	17.5	15.9	11.053	SF

<b>Offset Design</b>	Booth 15-26 Pad Sec.35-T7N-R65W - Booth 15-26 - Wellbore #1 - Plan #1 (8-17-11)											<b>Offset Site Error:</b>	0.0 ft
<b>Survey Program:</b>	0-MWD											<b>Offset Well Error:</b>	0.0 ft
<b>Reference</b>	<b>Offset</b>	<b>Semi Major Axis</b>			<b>Distance</b>								<b>Warning</b>
<b>Measured Depth (ft)</b>	<b>Vertical Depth (ft)</b>	<b>Measured Depth (ft)</b>	<b>Vertical Depth (ft)</b>	<b>Reference (ft)</b>	<b>Offset (ft)</b>	<b>Highside Toolface (°)</b>	<b>Offset Wellbore Centre +N/-S (ft)</b>	<b>+E/-W (ft)</b>	<b>Between Centres (ft)</b>	<b>Between Ellipses (ft)</b>	<b>Minimum Separation (ft)</b>	<b>Separation Factor</b>	
0.0	0.0	0.0	0.0	0.0	0.0	-84.45	1.5	-15.0	15.1	15.1	0.00	N/A	
100.0	100.0	100.0	100.0	0.1	0.1	-84.45	1.5	-15.0	15.1	14.9	0.22	67.093	
200.0	200.0	200.0	200.0	0.3	0.3	-84.45	1.5	-15.0	15.1	14.4	0.67	22.364	
300.0	300.0	300.0	300.0	0.6	0.6	-88.50	1.5	-15.0	14.9	13.8	1.12	13.292	
310.7	310.6	310.6	310.6	0.6	0.6	-90.00	1.5	-15.0	14.9	13.8	1.17	12.737	CC, ES
400.0	399.8	399.8	399.8	0.8	0.8	-107.93	1.5	-15.0	15.7	14.1	1.58	9.929	
500.0	499.5	499.5	499.5	1.0	1.0	-132.09	1.5	-15.0	20.2	18.1	2.06	9.812	SF
600.0	598.7	598.7	598.7	1.3	1.2	-149.65	1.5	-15.0	29.8	27.2	2.53	11.765	
700.0	697.5	697.5	697.5	1.6	1.5	-159.88	1.5	-15.0	44.0	41.0	3.00	14.682	
800.0	795.6	795.6	795.6	2.0	1.7	-165.83	1.5	-15.0	62.3	58.8	3.46	17.993	
900.0	893.1	894.2	894.2	2.4	1.9	-169.43	1.8	-15.1	84.0	80.1	3.93	21.398	
1,000.0	989.6	994.7	994.6	2.9	2.1	-171.22	4.9	-16.1	106.6	102.2	4.39	24.289	
1,100.0	1,085.3	1,095.8	1,095.5	3.5	2.4	-171.98	11.5	-18.1	129.5	124.6	4.86	26.635	
1,200.0	1,179.8	1,197.8	1,196.9	4.1	2.6	-172.16	21.6	-21.2	152.5	147.2	5.35	28.516	
1,300.0	1,273.2	1,300.5	1,298.7	4.7	2.9	-171.99	35.2	-25.5	175.8	169.9	5.86	30.000	
1,400.0	1,365.2	1,404.0	1,400.6	5.5	3.2	-171.57	52.5	-30.8	199.1	192.7	6.39	31.139	
1,476.8	1,434.9	1,484.0	1,478.8	6.1	3.4	-171.13	68.2	-35.7	217.1	210.2	6.83	31.798	
1,500.0	1,455.9	1,508.3	1,502.5	6.3	3.5	-171.00	73.4	-37.3	222.4	215.5	6.97	31.900	
1,600.0	1,546.1	1,613.9	1,604.9	7.1	3.9	-170.26	98.2	-44.9	243.5	235.9	7.63	31.900	
1,700.0	1,636.3	1,715.3	1,702.4	7.9	4.4	-169.39	124.7	-53.1	262.0	253.6	8.33	31.430	
1,800.0	1,726.6	1,813.5	1,796.8	8.7	4.9	-168.64	150.7	-61.2	280.2	271.2	9.04	30.986	

CC - Min centre to center distance or covergent point, SF - min separation factor, ES - min ellipse separation

<b>Company:</b>	BAYSWATER EXPLORATION & PRODUCTION	<b>Local Co-ordinate Reference:</b>	Well Booth 10-26
<b>Project:</b>	SEC.35-T7N-R65W	<b>TVD Reference:</b>	WELL @ 4844.0ft (Original Well Elev)
<b>Reference Site:</b>	Booth 15-26 Pad Sec.35-T7N-R65W	<b>MD Reference:</b>	WELL @ 4844.0ft (Original Well Elev)
<b>Site Error:</b>	0.0ft	<b>North Reference:</b>	True
<b>Reference Well:</b>	Booth 10-26	<b>Survey Calculation Method:</b>	Minimum Curvature
<b>Well Error:</b>	0.0ft	<b>Output errors are at</b>	2.00 sigma
<b>Reference Wellbore</b>	Wellbore #1	<b>Database:</b>	Landmark
<b>Reference Design:</b>	Plan #1 (8-17-11)	<b>Offset TVD Reference:</b>	Offset Datum

Offset Design Booth 15-26 Pad Sec.35-T7N-R65W - Booth 15-26 - Wellbore #1 - Plan #1 (8-17-11)													Offset Site Error:	0.0 ft
Survey Program: 0-MWD													Offset Well Error:	0.0 ft
Reference		Offset		Semi Major Axis			Distance							Warning
Measured Depth (ft)	Vertical Depth (ft)	Measured Depth (ft)	Vertical Depth (ft)	Reference (ft)	Offset (ft)	Highside Toolface (°)	Offset Wellbore Centre +N/-S (ft)	+E/-W (ft)	Between Centres (ft)	Between Ellipses (ft)	Minimum Separation (ft)	Separation Factor		
1,900.0	1,816.8	1,911.8	1,891.2	9.5	5.3	-167.98	176.7	-69.2	298.5	288.8	9.78	30.522		
2,000.0	1,907.0	2,010.0	1,985.6	10.4	5.8	-167.40	202.7	-77.3	316.9	306.3	10.53	30.084		
2,100.0	1,997.3	2,108.3	2,080.0	11.2	6.3	-166.88	228.7	-85.3	335.2	323.9	11.30	29.671		
2,200.0	2,087.5	2,206.6	2,174.4	12.0	6.9	-166.41	254.7	-93.3	353.6	341.6	12.08	29.285		
2,300.0	2,177.7	2,304.8	2,268.8	12.8	7.4	-165.99	280.7	-101.4	372.0	359.2	12.86	28.925		
2,400.0	2,268.0	2,403.1	2,363.3	13.7	7.9	-165.61	306.7	-109.4	390.5	376.8	13.66	28.590		
2,500.0	2,358.2	2,501.3	2,457.7	14.5	8.4	-165.26	332.7	-117.5	408.9	394.5	14.46	28.278		
2,600.0	2,448.4	2,599.6	2,552.1	15.3	9.0	-164.95	358.7	-125.5	427.4	412.1	15.27	27.989		
2,700.0	2,538.7	2,697.8	2,646.5	16.2	9.5	-164.66	384.7	-133.5	445.8	429.8	16.08	27.719		
2,800.0	2,628.9	2,796.1	2,740.9	17.0	10.0	-164.39	410.7	-141.6	464.3	447.4	16.90	27.469		
2,900.0	2,719.1	2,894.3	2,835.3	17.8	10.6	-164.14	436.7	-149.6	482.8	465.1	17.73	27.235		
3,000.0	2,809.4	2,992.6	2,929.7	18.7	11.1	-163.92	462.7	-157.6	501.3	482.7	18.56	27.017		
3,100.0	2,899.6	3,090.9	3,024.1	19.5	11.7	-163.70	488.7	-165.7	519.8	500.4	19.39	26.813		
3,200.0	2,989.8	3,189.1	3,118.6	20.4	12.2	-163.51	514.7	-173.7	538.3	518.1	20.22	26.622		
3,300.0	3,080.1	3,287.4	3,213.0	21.2	12.8	-163.32	540.7	-181.8	556.8	535.8	21.06	26.443		
3,400.0	3,170.3	3,385.6	3,307.4	22.0	13.3	-163.15	566.7	-189.8	575.4	553.5	21.90	26.276		
3,500.0	3,260.5	3,483.9	3,401.8	22.9	13.9	-162.99	592.7	-197.8	593.9	571.1	22.74	26.118		
3,600.0	3,350.7	3,582.1	3,496.2	23.7	14.4	-162.84	618.6	-205.9	612.4	588.8	23.58	25.969		
3,700.0	3,441.0	3,680.4	3,590.6	24.5	15.0	-162.69	644.6	-213.9	630.9	606.5	24.43	25.829		
3,800.0	3,531.2	3,778.6	3,685.0	25.4	15.5	-162.56	670.6	-222.0	649.5	624.2	25.27	25.697		
3,900.0	3,621.4	3,876.9	3,779.5	26.2	16.1	-162.43	696.6	-230.0	668.0	641.9	26.12	25.572		
4,000.0	3,711.7	3,975.2	3,873.9	27.1	16.6	-162.31	722.6	-238.0	686.6	659.6	26.97	25.453		
4,100.0	3,801.9	4,073.4	3,968.3	27.9	17.2	-162.20	748.6	-246.1	705.1	677.3	27.82	25.341		
4,200.0	3,892.1	4,171.7	4,062.7	28.7	17.7	-162.09	774.6	-254.1	723.7	695.0	28.68	25.234		
4,300.0	3,982.4	4,269.9	4,157.1	29.6	18.3	-161.99	800.6	-262.2	742.2	712.7	29.53	25.133		
4,400.0	4,072.6	4,368.2	4,251.5	30.4	18.8	-161.89	826.6	-270.2	760.8	730.4	30.39	25.037		
4,500.0	4,162.8	4,466.4	4,345.9	31.2	19.4	-161.79	852.6	-278.2	779.3	748.1	31.24	24.945		
4,600.0	4,253.1	4,558.0	4,433.9	32.1	19.9	-161.72	878.7	-285.7	798.0	766.0	32.05	24.896		
4,700.0	4,343.3	4,637.0	4,510.3	32.9	20.2	-161.72	895.9	-291.6	818.5	785.8	32.74	24.998		
4,800.0	4,433.5	4,715.1	4,586.4	33.8	20.5	-161.80	912.9	-296.9	841.3	808.0	33.37	25.210		
4,900.0	4,523.8	4,800.0	4,669.6	34.6	20.8	-161.97	929.0	-301.9	866.4	832.5	33.97	25.507		
5,000.0	4,614.0	4,888.6	4,737.1	35.4	21.0	-162.17	940.4	-305.4	893.6	859.1	34.49	25.908		
5,100.0	4,704.2	4,943.7	4,811.4	36.3	21.2	-162.44	951.1	-308.7	923.1	888.1	34.99	26.380		
5,200.0	4,794.5	5,017.6	4,884.7	37.1	21.4	-162.76	959.7	-311.4	954.6	919.2	35.45	26.928		
5,278.3	4,865.1	5,074.5	4,941.4	37.8	21.5	-163.03	965.2	-313.1	980.8	945.0	35.79	27.406		
5,300.0	4,884.7	5,100.0	4,966.8	37.9	21.6	-163.20	967.3	-313.7	988.3	952.5	35.88	27.546		
5,400.0	4,976.0	5,162.3	5,028.9	38.5	21.7	-163.71	971.5	-315.0	1,021.8	985.6	36.24	28.194		
5,500.0	5,068.6	5,234.0	5,100.5	39.1	21.8	-164.23	974.7	-316.0	1,054.3	1,017.7	36.56	28.840		
5,600.0	5,162.5	5,305.3	5,171.9	39.6	21.9	-164.74	976.2	-316.5	1,085.7	1,048.9	36.82	29.486		
5,700.0	5,257.6	5,391.1	5,257.6	40.1	22.0	-165.27	976.4	-316.5	1,115.7	1,078.6	37.04	30.121		
5,800.0	5,353.7	5,487.2	5,353.7	40.6	22.1	-165.76	976.4	-316.5	1,142.6	1,105.3	37.25	30.670		
5,900.0	5,450.6	5,584.1	5,450.6	41.0	22.2	-166.17	976.4	-316.5	1,166.2	1,128.8	37.45	31.139		
6,000.0	5,548.4	5,681.9	5,548.4	41.3	22.3	-166.51	976.4	-316.5	1,186.6	1,149.0	37.63	31.534		
6,100.0	5,646.9	5,780.4	5,646.9	41.7	22.4	-166.79	976.4	-316.5	1,203.7	1,165.9	37.78	31.860		
6,200.0	5,745.9	5,879.3	5,745.9	41.9	22.6	-167.00	976.4	-316.5	1,217.5	1,179.5	37.91	32.118		
6,300.0	5,845.3	5,978.8	5,845.3	42.1	22.7	-167.16	976.4	-316.5	1,227.8	1,189.8	38.00	32.312		
6,400.0	5,945.0	6,078.5	5,945.0	42.3	22.8	-167.26	976.4	-316.5	1,234.8	1,196.7	38.06	32.443		
6,500.0	6,045.0	6,178.4	6,045.0	42.4	22.9	-167.32	976.4	-316.5	1,238.4	1,200.3	38.09	32.512		
6,555.0	6,100.0	6,233.5	6,100.0	42.4	23.0	-169.92	976.4	-316.5	1,238.9	1,200.8	38.09	32.524		
6,600.0	6,145.0	6,278.4	6,145.0	42.5	23.0	-169.92	976.4	-316.5	1,238.9	1,200.7	38.22	32.413		
6,700.0	6,245.0	6,378.4	6,245.0	42.5	23.2	-169.92	976.4	-316.5	1,238.9	1,200.4	38.52	32.159		

CC - Min centre to center distance or convergent point, SF - min separation factor, ES - min ellipse separation

<b>Company:</b>	BAYSWATER EXPLORATION & PRODUCTION	<b>Local Co-ordinate Reference:</b>	Well Booth 10-26
<b>Project:</b>	SEC.35-T7N-R65W	<b>TVD Reference:</b>	WELL @ 4844.0ft (Original Well Elev)
<b>Reference Site:</b>	Booth 15-26 Pad Sec.35-T7N-R65W	<b>MD Reference:</b>	WELL @ 4844.0ft (Original Well Elev)
<b>Site Error:</b>	0.0ft	<b>North Reference:</b>	True
<b>Reference Well:</b>	Booth 10-26	<b>Survey Calculation Method:</b>	Minimum Curvature
<b>Well Error:</b>	0.0ft	<b>Output errors are at</b>	2.00 sigma
<b>Reference Wellbore</b>	Wellbore #1	<b>Database:</b>	Landmark
<b>Reference Design:</b>	Plan #1 (8-17-11)	<b>Offset TVD Reference:</b>	Offset Datum

Offset Design													Booth 15-26 Pad Sec.35-T7N-R65W - Booth 15-26 - Wellbore #1 - Plan #1 (8-17-11)		Offset Site Error:		0.0 ft
Survey Program: 0-MWD													Offset Well Error:		0.0 ft		
Reference		Offset		Semi Major Axis			Distance							Warning			
Measured Depth (ft)	Vertical Depth (ft)	Measured Depth (ft)	Vertical Depth (ft)	Reference (ft)	Offset (ft)	Highside Toolface (°)	Offset Wellbore Centre +N/-S (ft)	+E/-W (ft)	Between Centres (ft)	Between Ellipses (ft)	Minimum Separation (ft)	Separation Factor					
6,800.0	6,345.0	6,478.4	6,345.0	42.6	23.3	-169.92	976.4	-316.5	1,238.9	1,200.1	38.83	31.907					
6,900.0	6,445.0	6,578.4	6,445.0	42.7	23.4	-169.92	976.4	-316.5	1,238.9	1,199.7	39.13	31.657					
7,000.0	6,545.0	6,678.4	6,545.0	42.7	23.6	-169.92	976.4	-316.5	1,238.9	1,199.4	39.44	31.408					
7,100.0	6,645.0	6,778.4	6,645.0	42.8	23.7	-169.92	976.4	-316.5	1,238.9	1,199.1	39.76	31.162					
7,200.0	6,745.0	6,878.4	6,745.0	42.9	23.8	-169.92	976.4	-316.5	1,238.9	1,198.8	40.07	30.917					
7,300.0	6,845.0	6,978.4	6,845.0	42.9	24.0	-169.92	976.4	-316.5	1,238.9	1,198.5	40.39	30.674					
7,400.0	6,945.0	7,078.4	6,945.0	43.0	24.1	-169.92	976.4	-316.5	1,238.9	1,198.2	40.71	30.433					
7,500.0	7,045.0	7,178.4	7,045.0	43.1	24.2	-169.92	976.4	-316.5	1,238.9	1,197.8	41.03	30.194					
7,600.0	7,145.0	7,278.4	7,145.0	43.2	24.4	-169.92	976.4	-316.5	1,238.9	1,197.5	41.35	29.957					
7,700.0	7,245.0	7,378.4	7,245.0	43.2	24.5	-169.92	976.4	-316.5	1,238.9	1,197.2	41.68	29.722					
7,800.0	7,345.0	7,478.5	7,345.0	43.3	24.6	-169.92	976.4	-316.5	1,238.9	1,196.9	42.01	29.490					

Booth 15-26 Pad Sec.35-T7N-R65W - Booth 20-26 - Wellbore #1 - Plan #1 (8-17-11)												Offset Site Error:	0.0 ft
Survey Program: 0-MWD												Offset Well Error:	0.0 ft
Reference		Offset		Semi Major Axis			Distance						Warning
Measured Depth (ft)	Vertical Depth (ft)	Measured Depth (ft)	Vertical Depth (ft)	Reference (ft)	Offset (ft)	Highside Toolface (°)	Offset Wellbore Centre +N/-S (ft)	+E/-W (ft)	Between Centres (ft)	Between Ellipses (ft)	Minimum Separation (ft)	Separation Factor	
0.0	0.0	0.0	0.0	0.0	0.0	95.55	-1.5	15.0	15.1	15.1	0.00	N/A	
100.0	100.0	100.0	100.0	0.1	0.1	95.55	-1.5	15.0	15.1	14.9	0.22	67.093	
200.0	200.0	200.0	200.0	0.3	0.3	95.55	-1.5	15.0	15.1	14.4	0.67	22.364 CC	
300.0	300.0	300.0	300.0	0.6	0.6	104.57	-1.5	15.0	15.4	14.3	1.12	13.723 ES	
400.0	399.8	399.8	399.8	0.8	0.8	121.35	-1.5	15.0	17.5	15.9	1.58	11.053 SF	
500.0	499.5	499.5	499.5	1.0	1.0	139.91	-1.5	15.0	23.3	21.2	2.05	11.326	
600.0	598.7	598.7	598.7	1.3	1.2	153.33	-1.5	15.0	33.5	31.0	2.52	13.284	
700.0	697.5	698.1	698.1	1.6	1.5	161.42	-1.1	15.1	47.7	44.7	2.99	15.963	
800.0	795.6	798.6	798.5	2.0	1.7	165.29	2.3	15.7	63.1	59.6	3.45	18.289	
900.0	893.1	899.5	899.2	2.4	1.9	167.05	9.2	17.1	78.9	75.0	3.92	20.140	
1,000.0	989.6	1,001.0	1,000.1	2.9	2.2	167.72	19.6	19.1	94.9	90.5	4.40	21.582	
1,100.0	1,085.3	1,103.0	1,101.1	3.5	2.4	167.77	33.6	21.7	111.2	106.3	4.90	22.680	
1,200.0	1,179.8	1,205.5	1,202.0	4.1	2.7	167.42	51.3	25.1	127.7	122.2	5.44	23.483	
1,300.0	1,273.2	1,308.5	1,302.7	4.7	3.1	166.81	72.5	29.2	144.3	138.3	6.01	24.022	
1,400.0	1,365.2	1,412.0	1,403.0	5.5	3.5	166.02	97.5	34.0	161.1	154.5	6.62	24.322	
1,476.8	1,434.9	1,491.8	1,479.7	6.1	3.9	165.32	119.1	38.1	174.1	167.0	7.13	24.407	
1,500.0	1,455.9	1,516.0	1,502.8	6.3	4.0	165.11	126.1	39.5	178.0	170.7	7.31	24.354	
1,600.0	1,546.1	1,620.8	1,602.3	7.1	4.6	163.95	158.6	45.7	192.7	184.6	8.11	23.777	
1,700.0	1,636.3	1,725.3	1,700.3	7.9	5.2	162.45	194.4	52.5	204.4	195.5	8.98	22.755	
1,800.0	1,726.6	1,824.6	1,792.9	8.7	5.8	160.99	229.6	59.3	215.1	205.2	9.91	21.706	
1,900.0	1,816.8	1,923.9	1,885.4	9.5	6.5	159.68	264.9	66.0	226.0	215.1	10.88	20.766	
2,000.0	1,907.0	2,023.2	1,978.0	10.4	7.1	158.49	300.1	72.8	236.9	225.0	11.89	19.930	
2,100.0	1,997.3	2,122.5	2,070.6	11.2	7.8	157.40	335.4	79.6	247.9	235.0	12.92	19.187	
2,200.0	2,087.5	2,221.8	2,163.1	12.0	8.5	156.40	370.6	86.3	259.0	245.0	13.98	18.527	
2,300.0	2,177.7	2,321.1	2,255.7	12.8	9.1	155.49	405.9	93.1	270.2	255.1	15.06	17.938	
2,400.0	2,268.0	2,420.3	2,348.3	13.7	9.8	154.65	441.1	99.8	281.4	265.3	16.16	17.412	
2,500.0	2,358.2	2,519.6	2,440.9	14.5	10.5	153.87	476.4	106.6	292.7	275.4	17.28	16.940	
2,600.0	2,448.4	2,618.9	2,533.4	15.3	11.2	153.15	511.6	113.3	304.1	285.6	18.41	16.515	
2,700.0	2,538.7	2,718.2	2,626.0	16.2	11.9	152.49	546.9	120.1	315.4	295.9	19.55	16.131	
2,800.0	2,628.9	2,817.5	2,718.6	17.0	12.6	151.87	582.1	126.8	326.9	306.2	20.71	15.784	
2,900.0	2,719.1	2,916.8	2,811.2	17.8	13.3	151.29	617.4	133.6	338.3	316.4	21.87	15.468	
3,000.0	2,809.4	3,016.0	2,903.7	18.7	14.0	150.75	652.6	140.3	349.8	326.8	23.04	15.180	
3,100.0	2,899.6	3,115.3	2,996.3	19.5	14.6	150.24	687.8	147.1	361.3	337.1	24.22	14.916	
3,200.0	2,989.8	3,214.6	3,088.9	20.4	15.3	149.76	723.1	153.8	372.9	347.5	25.41	14.674	
3,300.0	3,080.1	3,313.9	3,181.4	21.2	16.0	149.32	758.3	160.6	384.4	357.8	26.60	14.452	
3,400.0	3,170.3	3,413.2	3,274.0	22.0	16.7	148.90	793.6	167.4	396.0	368.2	27.80	14.246	
3,500.0	3,260.5	3,512.5	3,366.6	22.9	17.4	148.50	828.8	174.1	407.7	378.6	29.00	14.056	
3,600.0	3,350.7	3,611.8	3,459.2	23.7	18.1	148.13	864.1	180.9	419.3	389.1	30.21	13.880	
3,700.0	3,441.0	3,711.0	3,551.7	24.5	18.8	147.77	899.3	187.6	430.9	399.5	31.42	13.716	
3,800.0	3,531.2	3,810.3	3,644.3	25.4	19.5	147.44	934.6	194.4	442.6	410.0	32.63	13.563	
3,900.0	3,621.4	3,909.6	3,736.9	26.2	20.2	147.12	969.8	201.1	454.3	420.4	33.85	13.420	
4,000.0	3,711.7	4,008.9	3,829.5	27.1	20.9	146.82	1,005.1	207.9	466.0	430.9	35.07	13.287	
4,100.0	3,801.9	4,108.2	3,922.0	27.9	21.6	146.53	1,040.3	214.6	477.7	441.4	36.29	13.161	
4,200.0	3,892.1	4,207.5	4,014.6	28.7	22.3	146.26	1,075.5	221.4	489.4	451.9	37.52	13.044	
4,300.0	3,982.4	4,306.8	4,107.2	29.6	23.0	145.99	1,110.8	228.1	501.1	462.3	38.74	12.933	
4,400.0	4,072.6	4,406.0	4,199.7	30.4	23.7	145.75	1,146.0	234.9	512.8	472.9	39.97	12.829	
4,500.0	4,162.8	4,505.3	4,292.3	31.2	24.4	145.51	1,181.3	241.6	524.6	483.4	41.21	12.731	
4,600.0	4,253.1	4,604.6	4,384.9	32.1	25.1	145.28	1,216.5	248.4	536.3	493.9	42.44	12.638	
4,700.0	4,343.3	4,703.9	4,477.5	32.9	25.8	145.06	1,251.8	255.1	548.1	504.4	43.67	12.550	
4,800.0	4,433.5	4,803.2	4,570.0	33.8	26.5	144.85	1,287.0	261.9	559.8	514.9	44.91	12.466	
4,900.0	4,523.8	4,902.5	4,662.6	34.6	27.2	144.65	1,322.3	268.7	571.6	525.5	46.15	12.387	

<b>Company:</b>	BAYSWATER EXPLORATION & PRODUCTION	<b>Local Co-ordinate Reference:</b>	Well Booth 10-26
<b>Project:</b>	SEC.35-T7N-R65W	<b>TVD Reference:</b>	WELL @ 4844.0ft (Original Well Elev)
<b>Reference Site:</b>	Booth 15-26 Pad Sec.35-T7N-R65W	<b>MD Reference:</b>	WELL @ 4844.0ft (Original Well Elev)
<b>Site Error:</b>	0.0ft	<b>North Reference:</b>	True
<b>Reference Well:</b>	Booth 10-26	<b>Survey Calculation Method:</b>	Minimum Curvature
<b>Well Error:</b>	0.0ft	<b>Output errors are at</b>	2.00 sigma
<b>Reference Wellbore</b>	Wellbore #1	<b>Database:</b>	Landmark
<b>Reference Design:</b>	Plan #1 (8-17-11)	<b>Offset TVD Reference:</b>	Offset Datum

Offset Design Booth 15-26 Pad Sec.35-T7N-R65W - Booth 20-26 - Wellbore #1 - Plan #1 (8-17-11)													Offset Site Error:	0.0 ft
Survey Program: 0-MWD													Offset Well Error:	0.0 ft
Measured Depth (ft)	Vertical Depth (ft)	Measured Depth (ft)	Vertical Depth (ft)	Reference	Offset	Semi Major Axis	Highside Toolface (°)	Offset Wellbore Centre +N/-S (ft)	Offset Wellbore Centre +E/-W (ft)	Distance Between Centres (ft)	Distance Between Ellipses (ft)	Minimum Separation (ft)	Separation Factor	Warning
5,000.0	4,614.0	5,001.8	4,755.2	35.4	27.9	144.46		1,357.5	275.4	583.4	536.0	47.39	12.312	
5,100.0	4,704.2	5,101.0	4,847.8	36.3	28.6	144.28		1,392.8	282.2	595.2	546.6	48.63	12.240	
5,200.0	4,794.5	5,200.3	4,940.3	37.1	29.3	144.10		1,428.0	288.9	607.0	557.1	49.87	12.172	
5,278.3	4,865.1	5,271.6	5,006.9	37.8	29.8	144.00		1,453.0	293.7	616.5	565.7	50.75	12.148	
5,300.0	4,884.7	5,290.4	5,024.6	37.9	29.9	144.02		1,459.3	294.9	619.3	568.3	50.96	12.151	
5,400.0	4,976.0	5,377.1	5,106.5	38.5	30.4	144.13		1,487.1	300.2	631.5	579.7	51.81	12.189	
5,500.0	5,068.6	5,463.7	5,189.2	39.1	30.8	144.24		1,512.4	305.1	642.9	590.4	52.57	12.229	
5,600.0	5,162.5	5,550.2	5,272.5	39.6	31.1	144.36		1,535.2	309.5	653.6	600.3	53.26	12.270	
5,700.0	5,257.6	5,636.5	5,356.3	40.1	31.5	144.49		1,555.5	313.3	663.3	609.5	53.87	12.313	
5,800.0	5,353.7	5,722.8	5,440.7	40.6	31.8	144.62		1,573.3	316.8	672.3	617.9	54.40	12.357	
5,900.0	5,450.6	5,809.0	5,525.4	41.0	32.1	144.76		1,588.6	319.7	680.4	625.5	54.85	12.403	
6,000.0	5,548.4	5,900.0	5,615.4	41.3	32.3	144.90		1,602.0	322.3	687.6	632.4	55.23	12.451	
6,100.0	5,646.9	5,981.1	5,695.9	41.7	32.5	145.05		1,611.5	324.1	694.0	638.5	55.49	12.505	
6,200.0	5,745.9	6,067.0	5,781.5	41.9	32.7	145.20		1,619.2	325.6	699.5	643.8	55.69	12.561	
6,300.0	5,845.3	6,152.8	5,867.1	42.1	32.8	145.36		1,624.4	326.6	704.2	648.4	55.79	12.621	
6,400.0	5,945.0	6,238.6	5,952.8	42.3	32.9	145.52		1,627.1	327.1	707.9	652.1	55.82	12.684	
6,500.0	6,045.0	6,330.7	6,045.0	42.4	33.0	145.68		1,627.4	327.1	710.7	654.9	55.77	12.742	
6,555.0	6,100.0	6,385.7	6,100.0	42.4	33.0	143.11		1,627.4	327.1	711.1	655.3	55.77	12.750	
6,600.0	6,145.0	6,430.7	6,145.0	42.5	33.1	143.11		1,627.4	327.1	711.1	655.2	55.86	12.731	
6,700.0	6,245.0	6,530.7	6,245.0	42.5	33.2	143.11		1,627.4	327.1	711.1	655.1	56.05	12.686	
6,800.0	6,345.0	6,630.7	6,345.0	42.6	33.2	143.11		1,627.4	327.1	711.1	654.9	56.26	12.641	
6,900.0	6,445.0	6,730.7	6,445.0	42.7	33.3	143.11		1,627.4	327.1	711.1	654.6	56.46	12.595	
7,000.0	6,545.0	6,830.7	6,545.0	42.7	33.4	143.11		1,627.4	327.1	711.1	654.4	56.66	12.550	
7,100.0	6,645.0	6,930.7	6,645.0	42.8	33.5	143.11		1,627.4	327.1	711.1	654.2	56.87	12.503	
7,200.0	6,745.0	7,030.7	6,745.0	42.9	33.6	143.11		1,627.4	327.1	711.1	654.0	57.08	12.457	
7,300.0	6,845.0	7,130.7	6,845.0	42.9	33.7	143.11		1,627.4	327.1	711.1	653.8	57.30	12.411	
7,400.0	6,945.0	7,230.7	6,945.0	43.0	33.8	143.11		1,627.4	327.1	711.1	653.6	57.52	12.364	
7,500.0	7,045.0	7,330.7	7,045.0	43.1	33.9	143.11		1,627.4	327.1	711.1	653.4	57.73	12.317	
7,600.0	7,145.0	7,430.7	7,145.0	43.2	34.0	143.11		1,627.4	327.1	711.1	653.1	57.96	12.270	
7,700.0	7,245.0	7,530.7	7,245.0	43.2	34.1	143.11		1,627.4	327.1	711.1	652.9	58.18	12.222	
7,800.0	7,345.0	7,630.7	7,345.0	43.3	34.2	143.11		1,627.4	327.1	711.1	652.7	58.41	12.175	

<b>Company:</b>	BAYSWATER EXPLORATION & PRODUCTION	<b>Local Co-ordinate Reference:</b>	Well Booth 10-26
<b>Project:</b>	SEC.35-T7N-R65W	<b>TVD Reference:</b>	WELL @ 4844.0ft (Original Well Elev)
<b>Reference Site:</b>	Booth 15-26 Pad Sec.35-T7N-R65W	<b>MD Reference:</b>	WELL @ 4844.0ft (Original Well Elev)
<b>Site Error:</b>	0.0ft	<b>North Reference:</b>	True
<b>Reference Well:</b>	Booth 10-26	<b>Survey Calculation Method:</b>	Minimum Curvature
<b>Well Error:</b>	0.0ft	<b>Output errors are at</b>	2.00 sigma
<b>Reference Wellbore</b>	Wellbore #1	<b>Database:</b>	Landmark
<b>Reference Design:</b>	Plan #1 (8-17-11)	<b>Offset TVD Reference:</b>	Offset Datum

Reference Depths are relative to WELL @ 4844.0ft (Original Well Elev) Coordinates are relative to: Booth 10-26  
 Offset Depths are relative to Offset Datum Coordinate System is US State Plane 1983, Colorado Northern Zone  
 Central Meridian is -105.500000 ° Grid Convergence at Surface is: 0.56°



<b>Company:</b>	BAYSWATER EXPLORATION & PRODUCTION	<b>Local Co-ordinate Reference:</b>	Well Booth 10-26
<b>Project:</b>	SEC.35-T7N-R65W	<b>TVD Reference:</b>	WELL @ 4844.0ft (Original Well Elev)
<b>Reference Site:</b>	Booth 15-26 Pad Sec.35-T7N-R65W	<b>MD Reference:</b>	WELL @ 4844.0ft (Original Well Elev)
<b>Site Error:</b>	0.0ft	<b>North Reference:</b>	True
<b>Reference Well:</b>	Booth 10-26	<b>Survey Calculation Method:</b>	Minimum Curvature
<b>Well Error:</b>	0.0ft	<b>Output errors are at</b>	2.00 sigma
<b>Reference Wellbore</b>	Wellbore #1	<b>Database:</b>	Landmark
<b>Reference Design:</b>	Plan #1 (8-17-11)	<b>Offset TVD Reference:</b>	Offset Datum

Reference Depths are relative to WELL @ 4844.0ft (Original Well Elev) Coordinates are relative to: Booth 10-26  
Offset Depths are relative to Offset Datum Coordinate System is US State Plane 1983, Colorado Northern Zone  
Central Meridian is -105.500000 ° Grid Convergence at Surface is: 0.56°

