

LOCATION DRAWING

VEGETATION:
GRASSLAND PASTURE

SURFACE USE:
GRAZING

REFERENCE POINT

LATITUDE: 40.68347

LONGITUDE: -103.98931

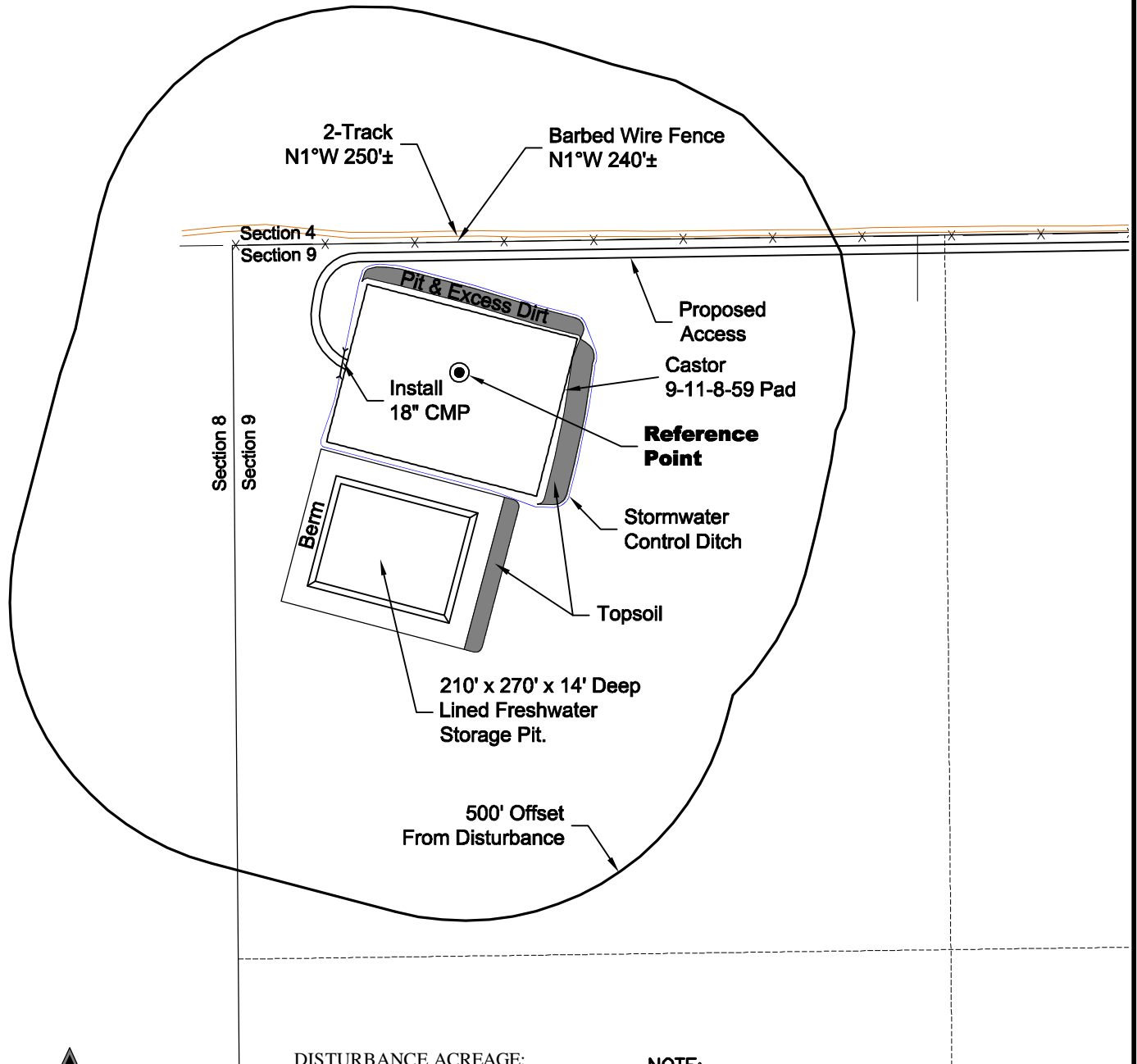
FOOTAGE: 240 FNL 416 FWL

GROUND ELEVATION: 4855.9

PDOP: 2.4 DATE: 7/12/2011

INSTRUMENT OPERATOR:

MARC WOODARD



DISTURBANCE ACREAGE:
4.0± DRILLING OPERATIONS
2.6± FRESHWATER STORAGE PIT
1.0± INTERIM RECLAIM

NOTE:

ALL PRODUCTION FACILITIES WILL BE ON PAD.

8/10/11



North

0 300 600

Graphic Scale in Feet
1 inch = 300 feet



LAND SURVEYING AND MAPPING
LAFAYETTE - WINTER PARK
Ph 303 666 0379 Fx 303 665 6320

CARRIZO OIL & GAS, INC
CASTOR 9-11-8-59 PAD

NW1/4 NW1/4 SECTION 9 T8N R59W
6th PM WELD COUNTY COLORADO