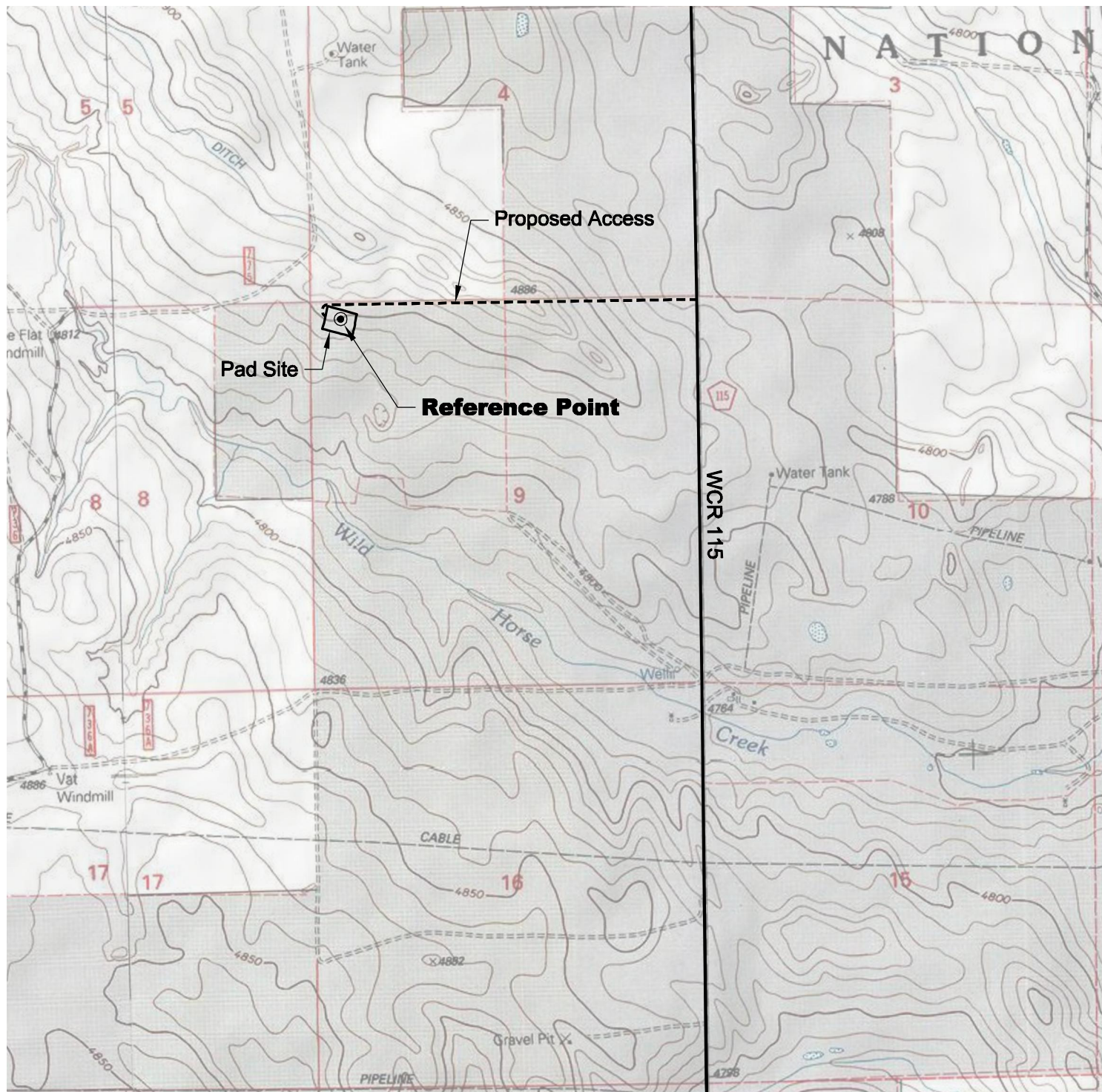


# ACCESS ROAD MAP



## DRIVING DIRECTIONS:

- MP 0.0 - Intersection of Highway 14 & WCR 129 in Raymer;
- West on Highway 14
- MP 7.7 - Right on WCR 115; continue north on WCR 115
- MP 12.2 - Left on access to pad
- MP 13.2 - Castor 9-11-8-59 Pad

8/5/11



North



Graphic Scale in Feet  
1 inch = 2000 feet



LAND SURVEYING AND MAPPING  
LAFAYETTE - WINTER PARK  
Ph 303 666 0379 Fx 303 665 6320

**CARRIZO OIL & GAS, INC**  
**CASTOR 9-11-8-59 PAD**

**NW1/4 NW1/4 SECTION 9 T8N R59W**  
**6th PM WELD COUNTY COLORADO**