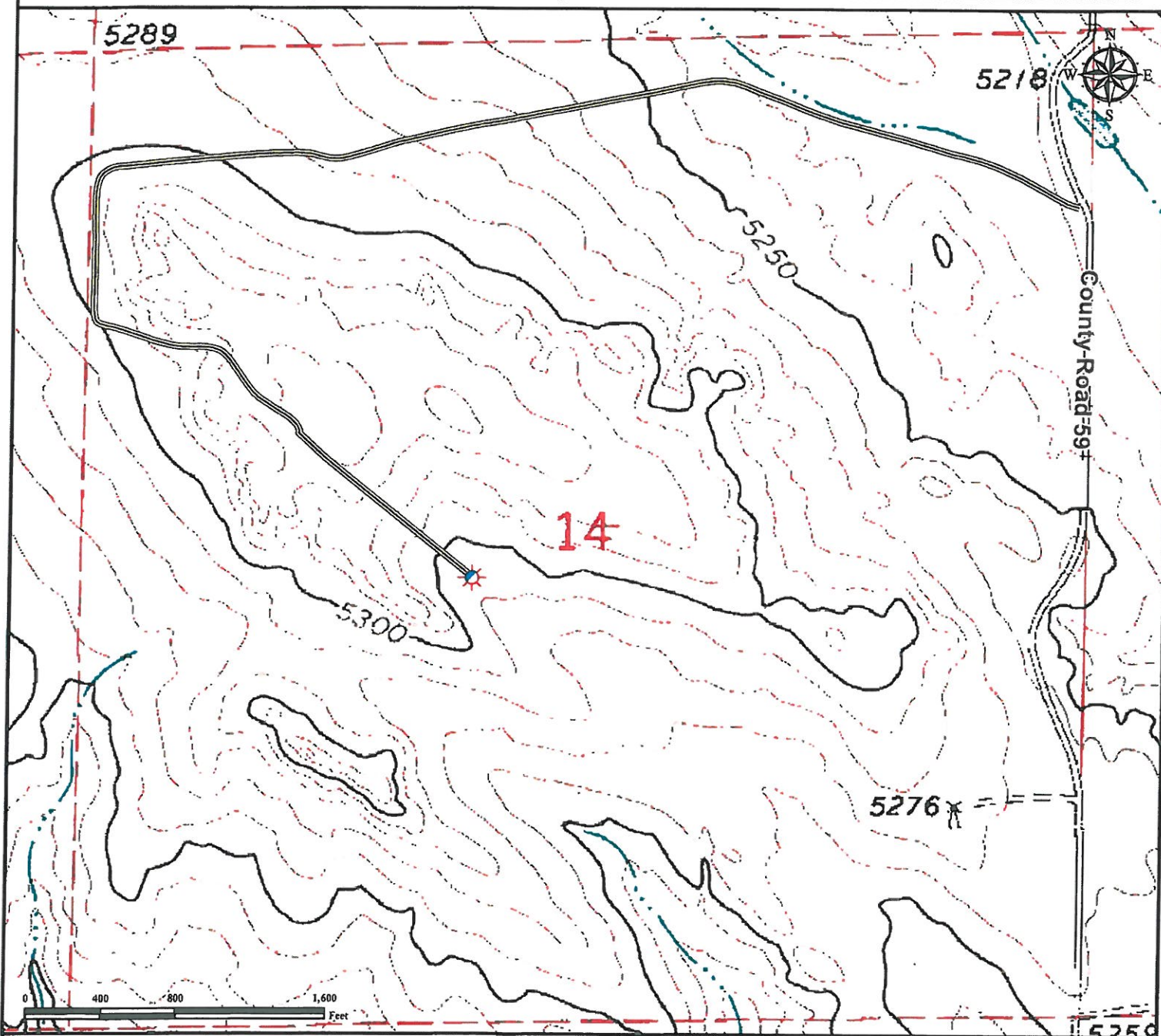


Access Road Map WPC FEDERAL 14-5

NE¼ SW¼ SECTION 14, TOWNSHIP 10 NORTH, RANGE 64 WEST OF THE 6TH PRINCIPAL MERIDIAN



From Grover, CO: From the intersection of County Road 390 and County Road 122 proceed West on County Road 122 ± 0.7 miles.

Turn Left on County Road 87 and proceed South ± 1.1 Miles.

Turn Right on County Road 120 and continue West ± 13.9 miles to County Road 59.

Turn Left On County Road 59 and proceed South ± 1.2 miles to well access road.

Turn Right on well access road and proceed West ± 1.0 miles

Turn Left and continue on existing access road ± 0.1 miles South.

Turn Left and continue Southeast ± 0.5 miles to proposed well location.

Total distance from Grover, CO to proposed well location is **18.5 Miles.**

Legend



Proposed Well

Access Road

Reference Location

** All Measurements are Made from
Reference Well WPC FEDERAL 14-5 **
Lat: 40.834002° Long: -104.516217° (NAD 83)
Elevation: 5300 Feet



Use our resources to find yours!
www.petro-fs.com
(303) 928-7128

Field Date: 04/08/2011
Drafting Date: 04/19/2011
Drafter: DMM
Checked By: BHF

Data Sources:
- Topo courtesy of USGS

Prepared for:



WARD
PETROLEUM
CORPORATION