

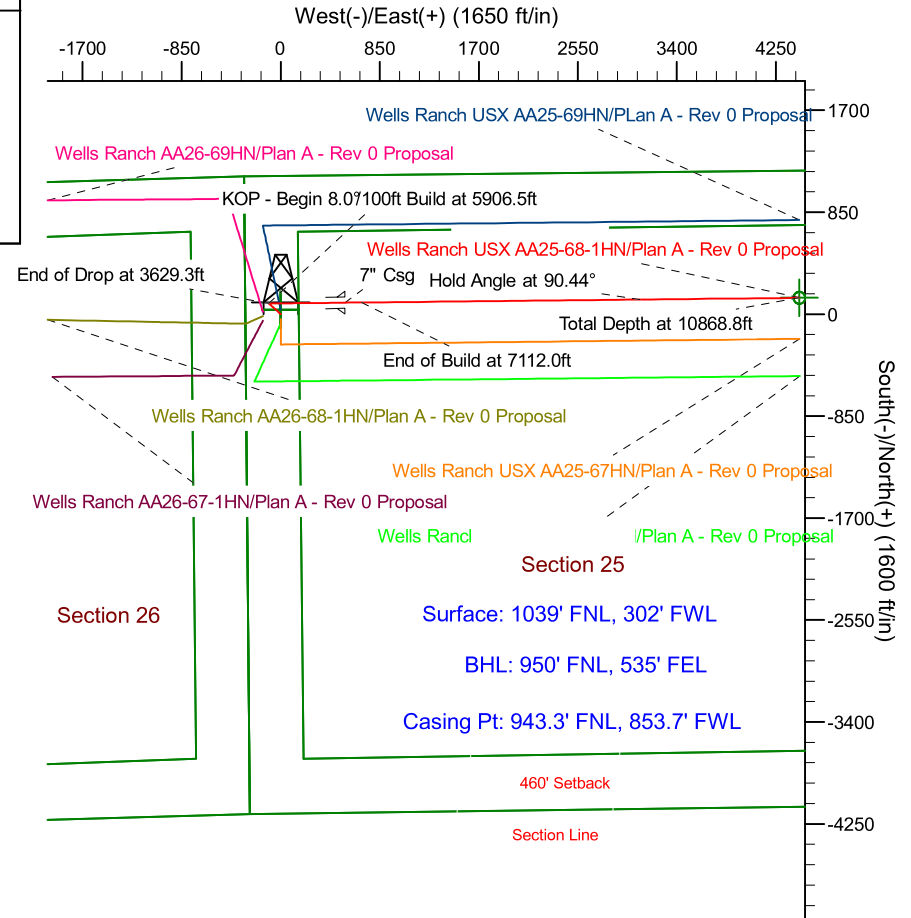
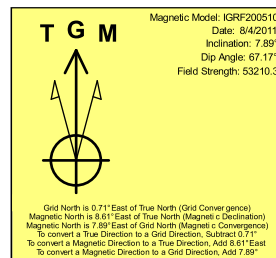
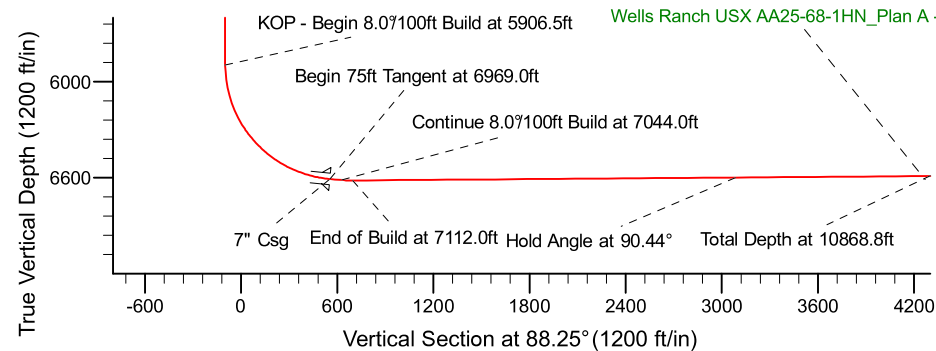
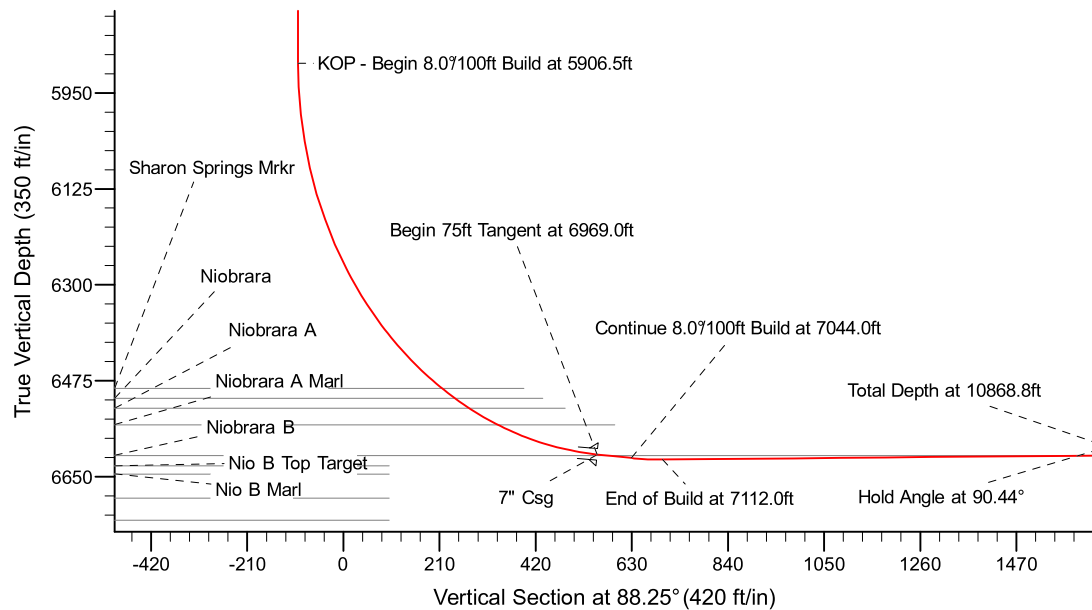
Project: Weld County Colorado (NAD 83)
 Site: Sec.25, T6N, R63W
 Well: Wells Ranch USX AA25-68-1HN
 Wellbore: Plan A - Rev 0 (PERMITTING PLAN ONLY)
 Design: Plan A - Rev 0 Proposal

Noble Energy

HALLIBURTON
 Sperry Drilling

SECTION DETAILS

Sec	MD	Inc	Azi	TVD	+N/-S	+E/-W	Dleg	TFace	VSecl	Target
1	0.0	0.00	0.00	0.0	0.0	0.0	0.00	0.00	0.0	
2	2500.0	0.00	0.00	2500.0	0.0	0.0	0.00	0.00	0.0	
3	2980.1	12.00	311.11	2976.6	32.9	-37.7	2.50	311.11	-36.7	
4	3149.2	12.00	311.11	3142.0	56.1	-64.3	0.00	0.00	-62.5	
5	3629.3	0.00	0.00	3618.6	89.0	-102.0	2.50	180.00	-99.2	
6	5906.5	0.00	0.00	5895.8	89.0	-102.0	0.00	0.00	-99.2	
7	6969.0	85.00	89.41	6609.3	95.7	551.7	8.00	89.41	554.4	
8	7044.0	85.00	89.41	6615.8	96.5	626.5	0.00	0.00	629.1	
9	7112.0	90.44	89.41	6618.5	97.2	694.4	8.00	0.00	697.0	
10	10868.8	90.44	89.40	6589.8	136.1	4450.9	0.00	-121.64	4453.0	Wells Ranch USX AA25-68-1H_Plan A - Rev 0_BHL Tgt-



WELL DETAILS: Wells Ranch USX AA25-68-1HN(NAD 83 Geodetic System)

Ground Level: 4815.0
 Northing: 430691.70 Easting: 1008242.02 Latitude: 40°27' 42.804 N Longitude: 104°23' 36.708 W

Plan: Plan A - Rev 0 Proposal (Wells Ranch USX AA25-68-1HN/Plan A - Rev 0 (PERMITTING PLAN ONLY))

Created By: Erasmo Mendoza Date: 10:48, August 09 2011

OK to submit with 2A as per Noble Drilling
8/9/2011 10:53