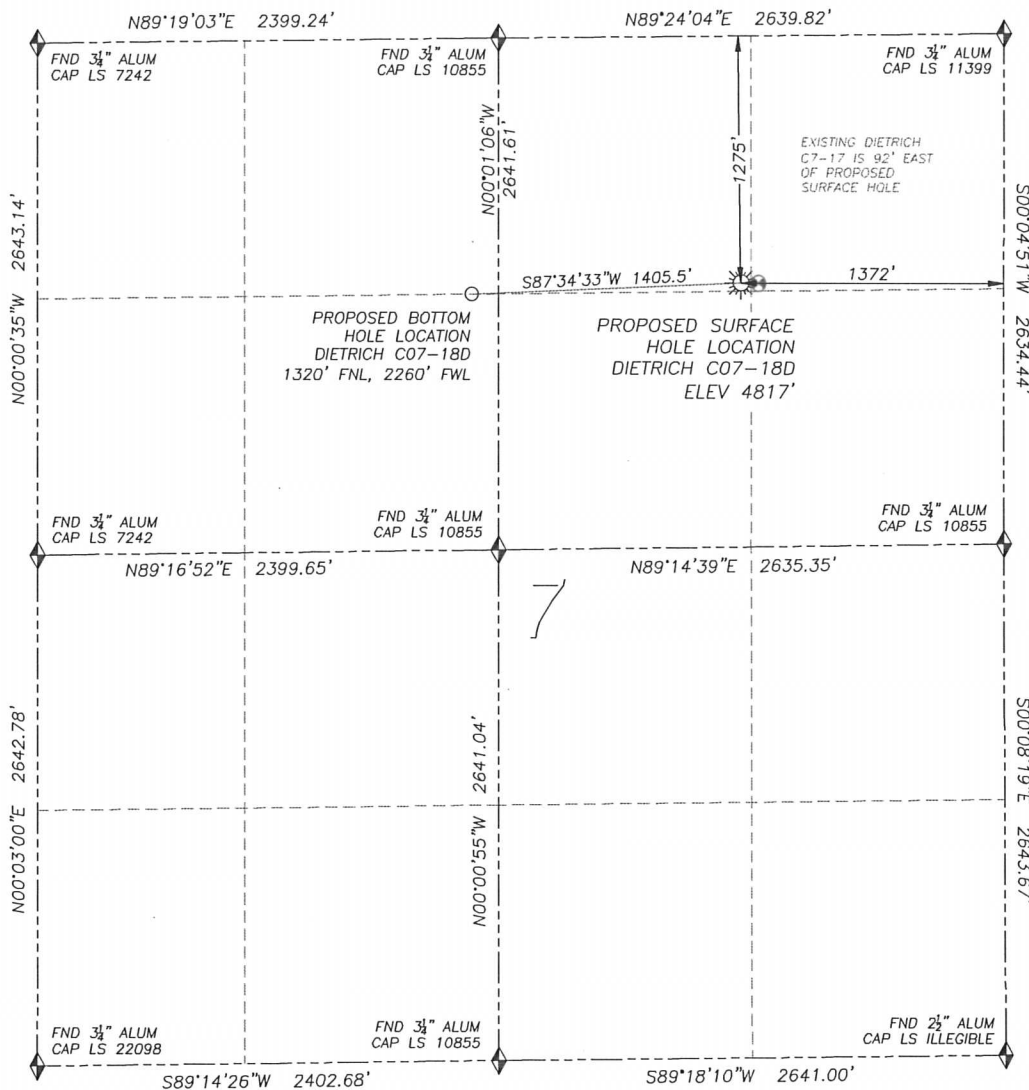


WELL LOCATION CERTIFICATE

DIETRICH C07-18D

SECTION 7, TOWNSHIP 4 NORTH, RANGE 64 WEST OF THE 6TH PRINCIPAL MERIDIAN



0 500 1000
SCALE: 1" = 1000'

LEGEND

- ◆ FOUND MONUMENT AS DESCRIBED
- ☼ PROPOSED WELL
- ⊙ EXISTING WELL
- BOTTOM HOLE
- ⊘ ABANDONED WELL

NAD 83 LATITUDE AND LONGITUDE

DIETRICH C07-18D SURFACE HOLE:

LATITUDE: N40.33055°
 LONGITUDE: W104.58890°
 ELEVATION: 4817'
 FOOTAGE: 1275' FNL, 1372' FEL
 PDOP: 2.2
 QTR/QTR: NW4/NE4
 PROP LINE: 54'± EAST

BOTTOM HOLE:

LATITUDE: N40.33038°
 LONGITUDE: W104.59394°
 FOOTAGE: 1320' FNL, 2260' FWL

NEAREST EXISTING WELL:

DIETRICH 7-17 SURFACE HOLE
 LATITUDE: N40.33054°
 LONGITUDE: W104.58857°
 ELEVATION: 4815'
 92' EAST

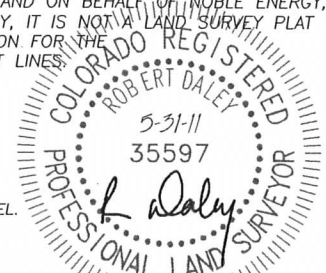
IN ACCORDANCE WITH A REQUEST FROM DANIEL MCCOY OF NOBLE ENERGY INC., DALEY LAND SURVEYING, INC. HAS DETERMINED THE SURFACE LOCATION OF THE DIETRICH C07-18D WELL TO BE 1275' FNL, 1372' FEL, AS MEASURED AT NINETY (90) DEGREES FROM THE SECTION LINES OF SECTION 7, TOWNSHIP 4 NORTH, RANGE 64 WEST OF THE 6TH PRINCIPAL MERIDIAN, WELD COUNTY, COLORADO. THE BOTTOM HOLE LOCATION, PROVIDED BY THE CLIENT, IS TO BE 1320' FNL, 2260' FWL.

I HEREBY CERTIFY THAT THIS WELL LOCATION CERTIFICATE WAS PREPARED BY ME OR UNDER MY DIRECT SUPERVISION, THAT THE WORK WAS COMPLETED ON 5/26/2011 FOR AND ON BEHALF OF NOBLE ENERGY, INC., AND THAT THIS MAP DOES NOT REPRESENT A BOUNDARY SURVEY, IT IS NOT A LAND SURVEY PLAT OR AN IMPROVEMENT SURVEY PLAT AND IT IS NOT TO BE RELIED UPON FOR THE ESTABLISHMENT OF FENCE, BUILDING OR OTHER FUTURE IMPROVEMENT LINES.

NOTES:

- 1) BEARINGS FOR THIS MAP ARE ASSUMED AND BASED UPON GPS OBSERVATIONS MADE BETWEEN MONUMENTS LOCATED AT THE NORTHEAST CORNER AND EAST QUARTER CORNER OF SECTION 7, T.4N., R.64W.
- 2) HORIZONTAL DATUM IS NAD83.
- 3) VERTICAL DATUM IS NAVD88. ELEVATIONS ARE DERIVED FROM GPS OBSERVATIONS PROCESSED THROUGH OPUS, UTILIZING THE GEOID03 MODEL.
- 4) SEE LOCATION DRAWING FOR VISIBLE IMPROVEMENTS WITHIN 600' OF PROPOSED SURFACE HOLE LOCATION.
- 5) SURFACE USE: PASTURE.

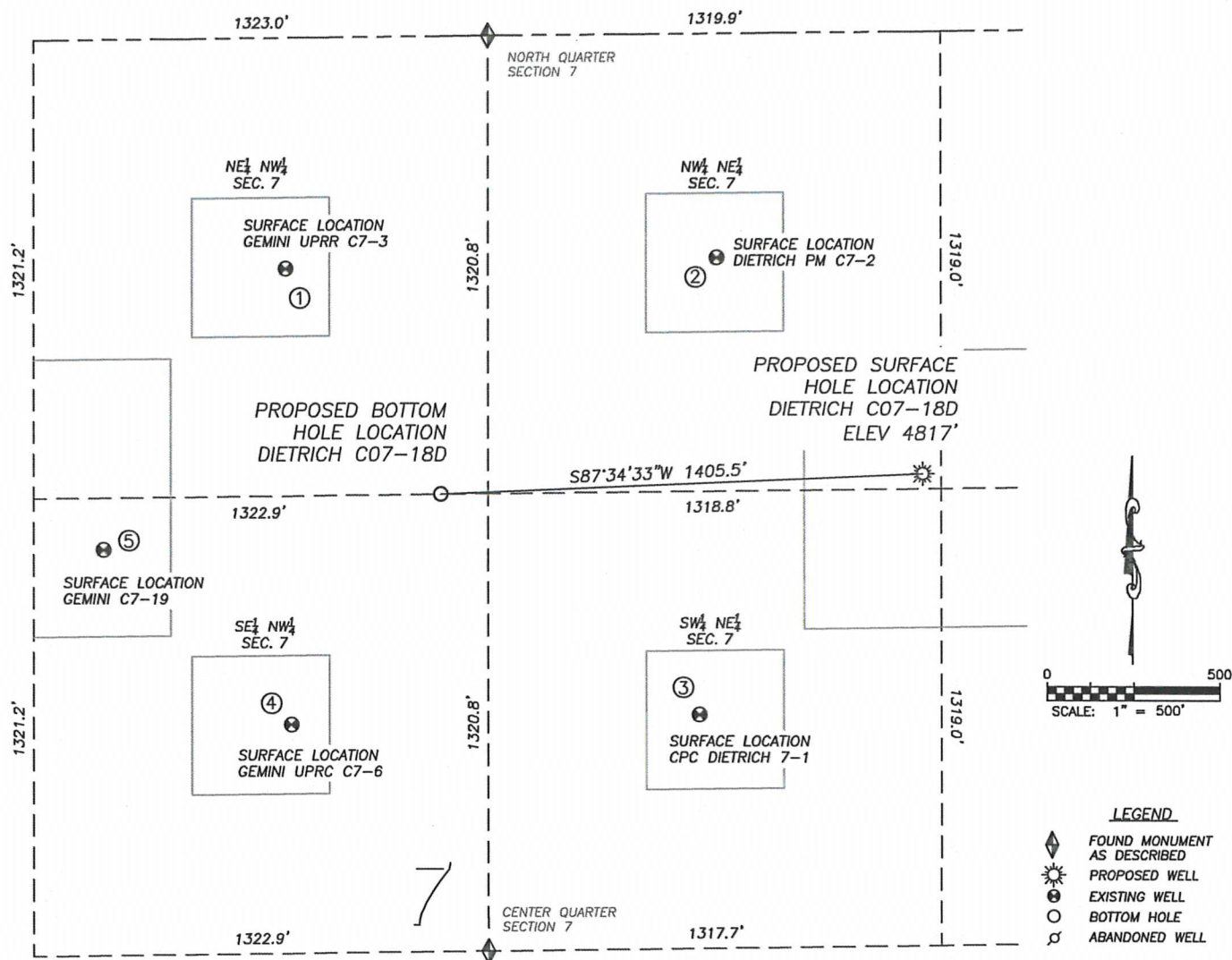
NOTICE: According to Colorado law you MUST commence any legal action based upon any defect in this W.L.C. within three years after you first discover such defect. In no event may any action based upon any such defect in this W.L.C. be commenced more than ten years from the date of the certification shown herein.



FOR AND ON BEHALF OF
 DALEY LAND SURVEYING INC.,
 Robert Daley, PLS 35597

SITE SKETCH DIETRICH C07-18D

SECTION 7, TOWNSHIP 4 NORTH, RANGE 64 WEST OF THE 6TH PRINCIPAL MERIDIAN



①
GEMINI UPRR C7-3
NE/NW SEC. 7
666' FNL, 1809' FWL
790' NW OF PROPOSED
BOTTOM HOLE LOCATION
LAT. N40.33217°
LONG. W104.59556°
EL: 4855'
PDOP 2.0

②
DIETRICH PM C7-2
NW/NE SEC. 7
646' FNL, 1973' FEL
1055' NE OF PROPOSED
BOTTOM HOLE LOCATION
LAT. N40.33226°
LONG. W104.59105°
EL: 4831'
PDOP 1.5

③
CPC DIETRICH 7-1
SW/NE SEC. 7
1965' FNL, 2022' FEL
986' SE OF PROPOSED
BOTTOM HOLE LOCATION
LAT. N40.32864°
LONG. W104.59124°
EL: 4835'
PDOP 2.2

④
GEMINI UPRC C7-6
SE/NW SEC. 7
1981' FNL, 1826' FWL
795' SW OF PROPOSED
BOTTOM HOLE LOCATION
LAT. N40.32856°
LONG. W104.59549°
EL: 4864'
PDOP 1.7

⑤
GEMINI C7-19
SE/NW SEC. 7
1470' FNL, 1280' FWL
993' SW OF PROPOSED
BOTTOM HOLE LOCATION
LAT. N40.32994°
LONG. W104.59745°
EL: 4857'
PDOP 1.7

NOTES:
1) THIS DOES NOT REPRESENT
A BOUNDARY SURVEY
2) THE LATITUDES AND
LONGITUDES SHOWN ARE
REFERENCED TO NAD83
3) DATUM FOR ELEVATION IS
NAVD88. ELEVATIONS ARE
DERIVED FROM GPS-RTK
OBSERVATIONS PROCESSED
THROUGH OPUS, UTILIZING
THE GEOID03 MODEL

