

QUICKSILVER RESOURCES, INC.
BRET GRANDBOUCHE #24-02
LOCATED IN MOFFAT COUNTY, COLORADO
SECTION 2, T6N, R92W, 6th P.M.

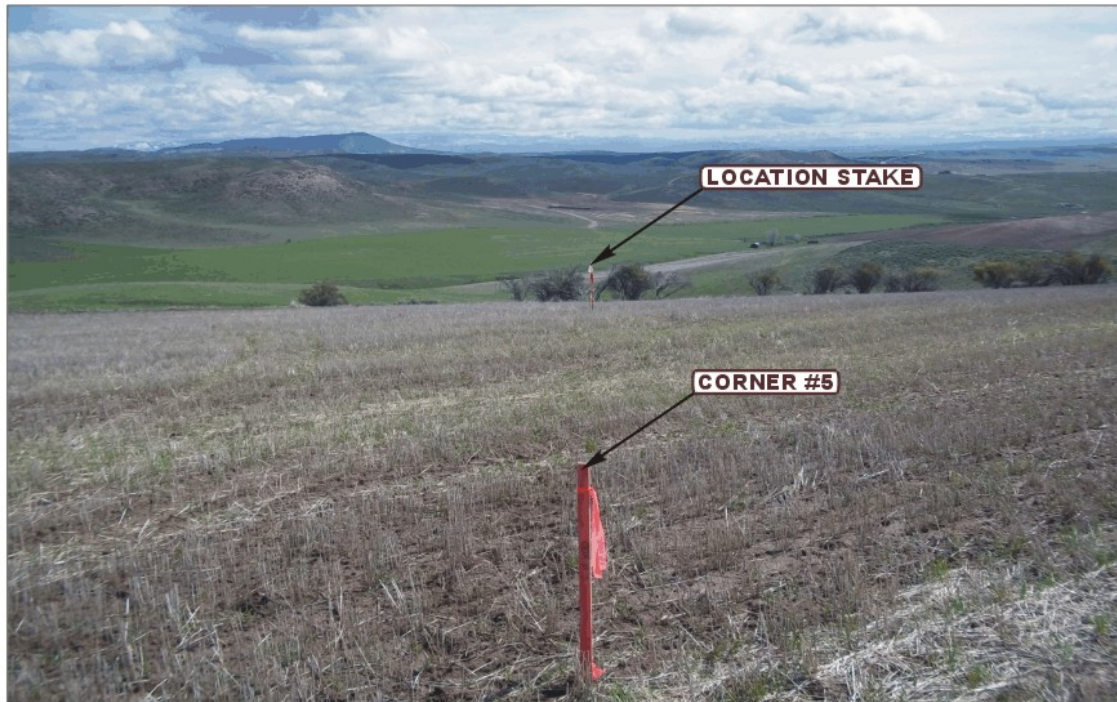


PHOTO: VIEW FROM CORNER #5 TO LOCATION STAKE

CAMERA ANGLE: NORTHEASTERLY



PHOTO: VIEW FROM BEGINNING OF PROPOSED ACCESS

CAMERA ANGLE: SOUTHEASTERLY



UELS

Uintah Engineering & Land Surveying
85 South 200 East Vernal, Utah 84078
(435) 789-1017 * FAX (435) 789-1813

LOCATION PHOTOS

06 **06** **11**
MONTH DAY YEAR

TAKEN BY: M.A.

DRAWN BY: S.F.

REVISED: 07-26-11

PHOTO
P1

QUICKSILVER RESOURCES, INC.
BRET GRANDBOUCHE #24-02
LOCATED IN MOFFAT COUNTY, COLORADO
SECTION 2, T6N, R92W, 6th P.M.



PHOTO: VIEW OF LOCATION STAKE

CAMERA ANGLE: NORTHERLY

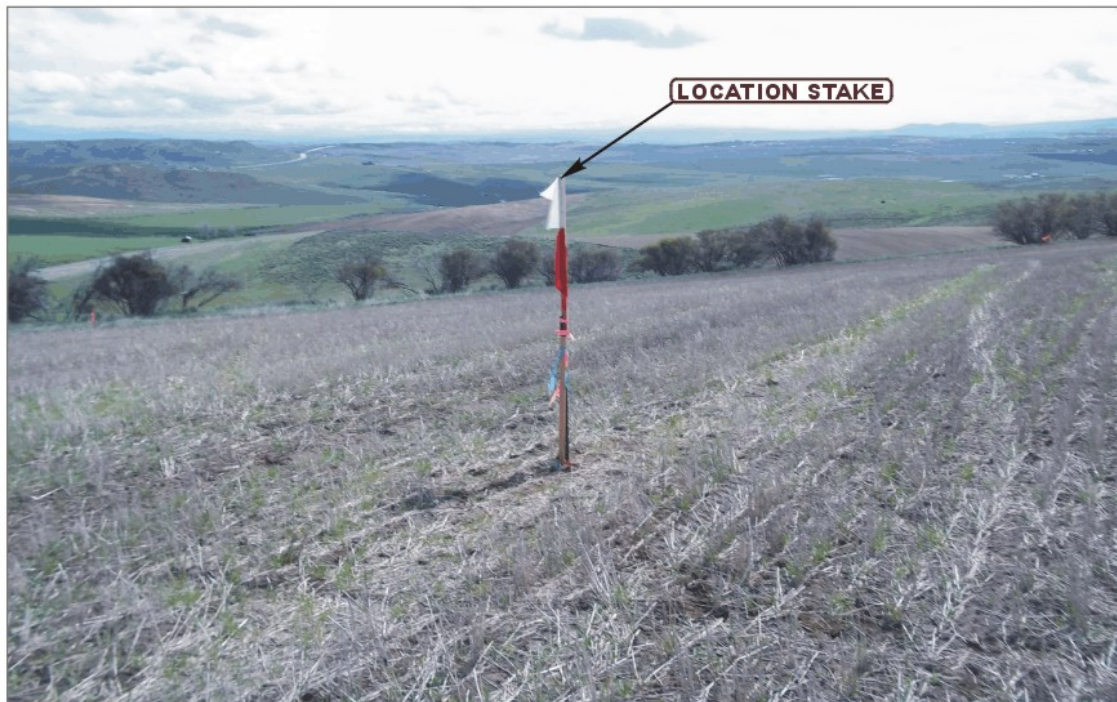


PHOTO: VIEW OF LOCATION STAKE

CAMERA ANGLE: EASTERLY



UELS Uintah Engineering & Land Surveying
85 South 200 East Vernal, Utah 84078
(435) 789-1017 * FAX (435) 789-1813

LOCATION PHOTOS

06 **06** **11**
MONTH DAY YEAR

PHOTO
P2

TAKEN BY: M.A.

DRAWN BY: S.F.

REVISED: 07-26-11

QUICKSILVER RESOURCES, INC.
BRET GRANDBOUCHE #24-02
LOCATED IN MOFFAT COUNTY, COLORADO
SECTION 2, T6N, R92W, 6th P.M.



PHOTO: VIEW OF LOCATION STAKE

CAMERA ANGLE: SOUTHERLY



PHOTO: VIEW OF LOCATION STAKE

CAMERA ANGLE: WESTERLY



UELS

Uintah Engineering & Land Surveying
85 South 200 East Vernal, Utah 84078
(435) 789-1017 * FAX (435) 789-1813

LOCATION PHOTOS

06 06 11
MONTH DAY YEAR

PHOTO
P3

TAKEN BY: M.A.

DRAWN BY: S.F.

REVISED: 07-26-11