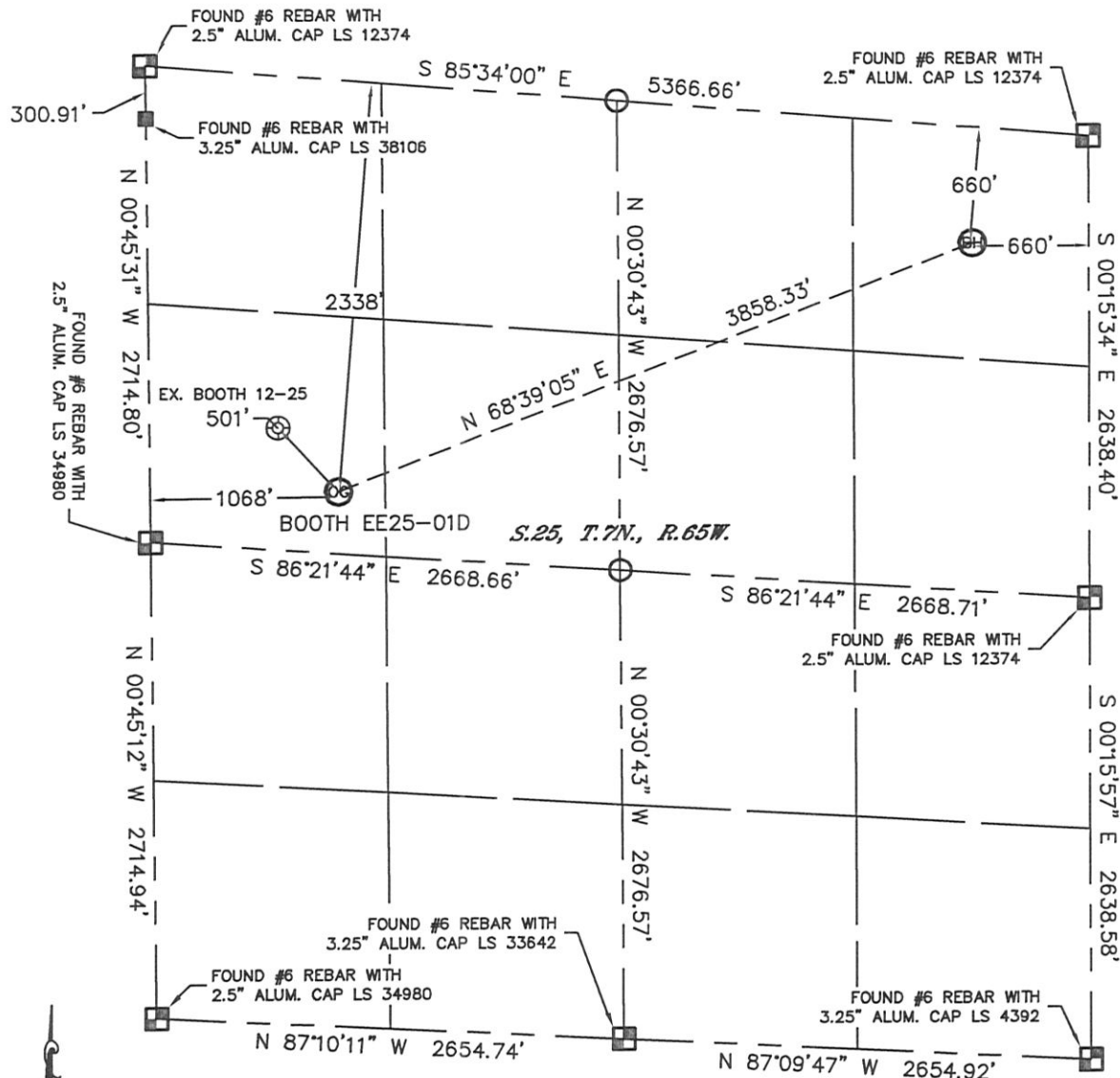


WELL LOCATION CERTIFICATE

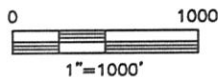
THIS MAP DOES NOT REPRESENT A BOUNDARY SURVEY

SECTION: 25
TOWNSHIP: 7N
RANGE: 65W



In accordance with a request from Matt Verbit with Noble Energy Inc., Lat40°, Inc. has determined the surface location of the BOOTH EE25-01D to be 2338' from the NORTH line and 1068' from the WEST line and the bottom hole to be 660' from the NORTH line and 660' from the EAST line as measured at right angles from the section lines of Section 25, Township 7 North, Range 65 West of the Sixth Principal Meridian, County of Weld, State of Colorado.

I hereby state that this Well Location Certificate was prepared by me, or under my direct supervision, that the fieldwork was completed on 6/10/11, for and on behalf of Noble Energy Inc. That this is not a Land Survey Plat, and that it is not to be relied upon for establishment of fence, building, or other future improvement lines.



NOTE:

- 1) Bearings shown are Grid Bearings of the Colorado State Plane Coordinate System, North Zone, North American Datum 1983/2007. The lineal dimensions as contained herein are based upon the "U.S. Survey Foot."
- 2) Ground elevations are based on an observed GPS elevation (NAVD 1988 DATUM).
- 3) NEAREST EXISTING WELL: BOOTH 12-25, 501'
- 4) IMPROVEMENTS: See LOCATION DRAWING for all visible improvements within 400' of disturbed area.
- 5) SURFACE USE: IRRIGATED CROP FIELD
- 6) INSTRUMENT OPERATOR: AARON LUND

SURFACE LOCATION
LATITUDE: 40.54566°N
LONGITUDE: 104.61670°W
PDOP: 1.3
ELEV: 4820'
1/4, 1/4: SW1/4NW1/4
NEAREST PROPERTY LINE: 1068' WEST

BOTTOM HOLE
LATITUDE: 40.54942°N
LONGITUDE: 104.60372°W

NOTE

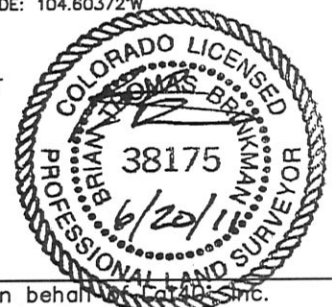
According to Colorado law, you must commence any legal action based upon any defect in this W.L.C. within three years after you discover such defect. In no event, may any action based upon any defect in this survey be commenced more than ten years after the date of the certificate shown hereon. (13-80-105 C.R.S.)

LEGEND

- = ALIQUOT MONUMENT AS DESCRIBED
- = CALCULATED POSITION

Brian T. Brinkman—On behalf of Lat40°, Inc.
Colorado Licensed Professional
Land Surveyor No. 38175

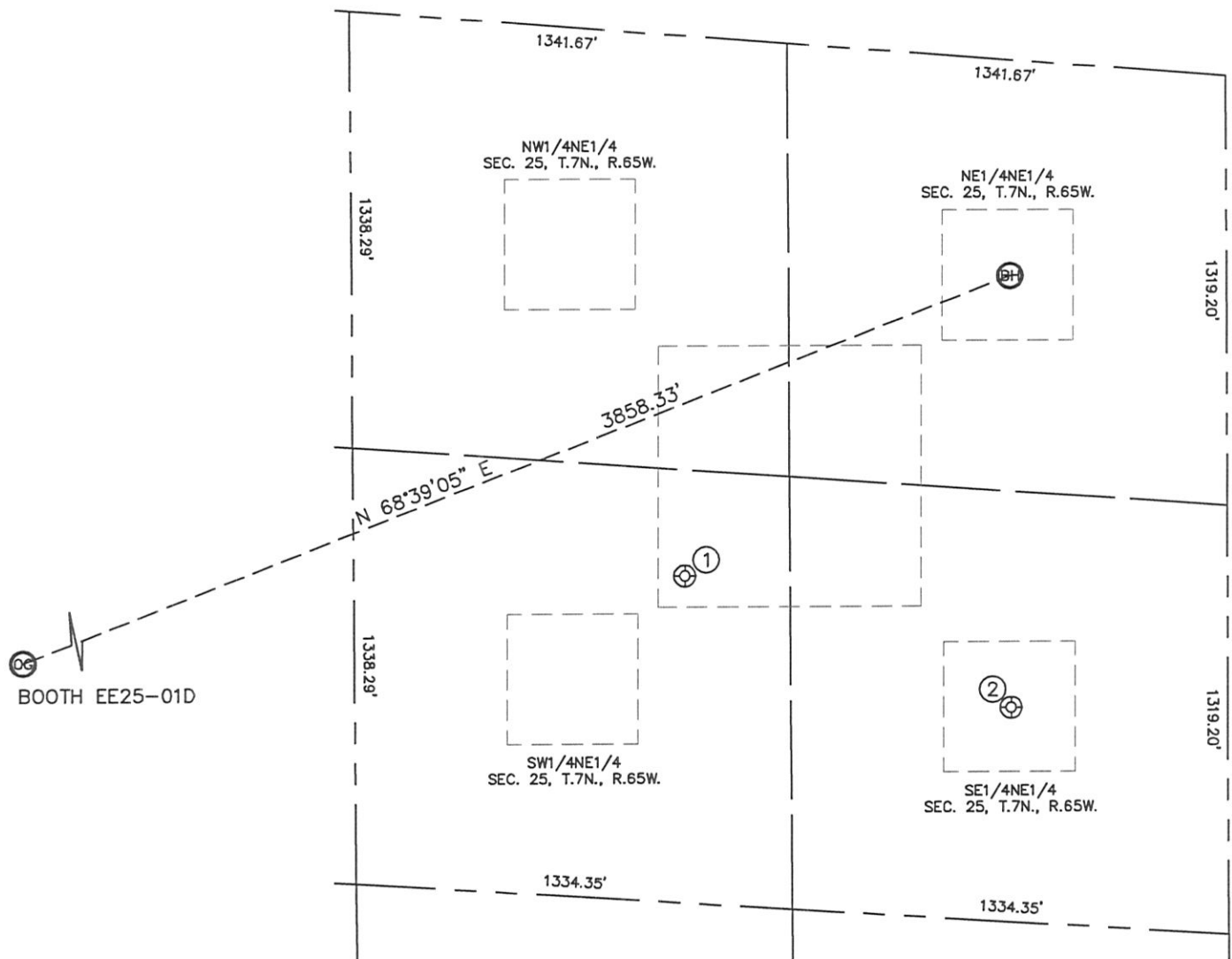
PROJECT#: 2011148



SITE SKETCH

BOOTH EE25-01D

SECTION: 25
TOWNSHIP: 7N
RANGE: 65W



- ① BOOTH USX EE25-17
SW1/4NE1/4
1652' FNL
1655' FEL
LAT-40.54692N
LONG-104.60732W
PDOP: 2.2
ELEV: 4875'

② BOOTH USX EE25-8
SE1/4NE1/4
1981' FNL
661' FEL
LAT-40.54578N
LONG-104.60375W
PDOP: 2.3
ELEV: 4876'

