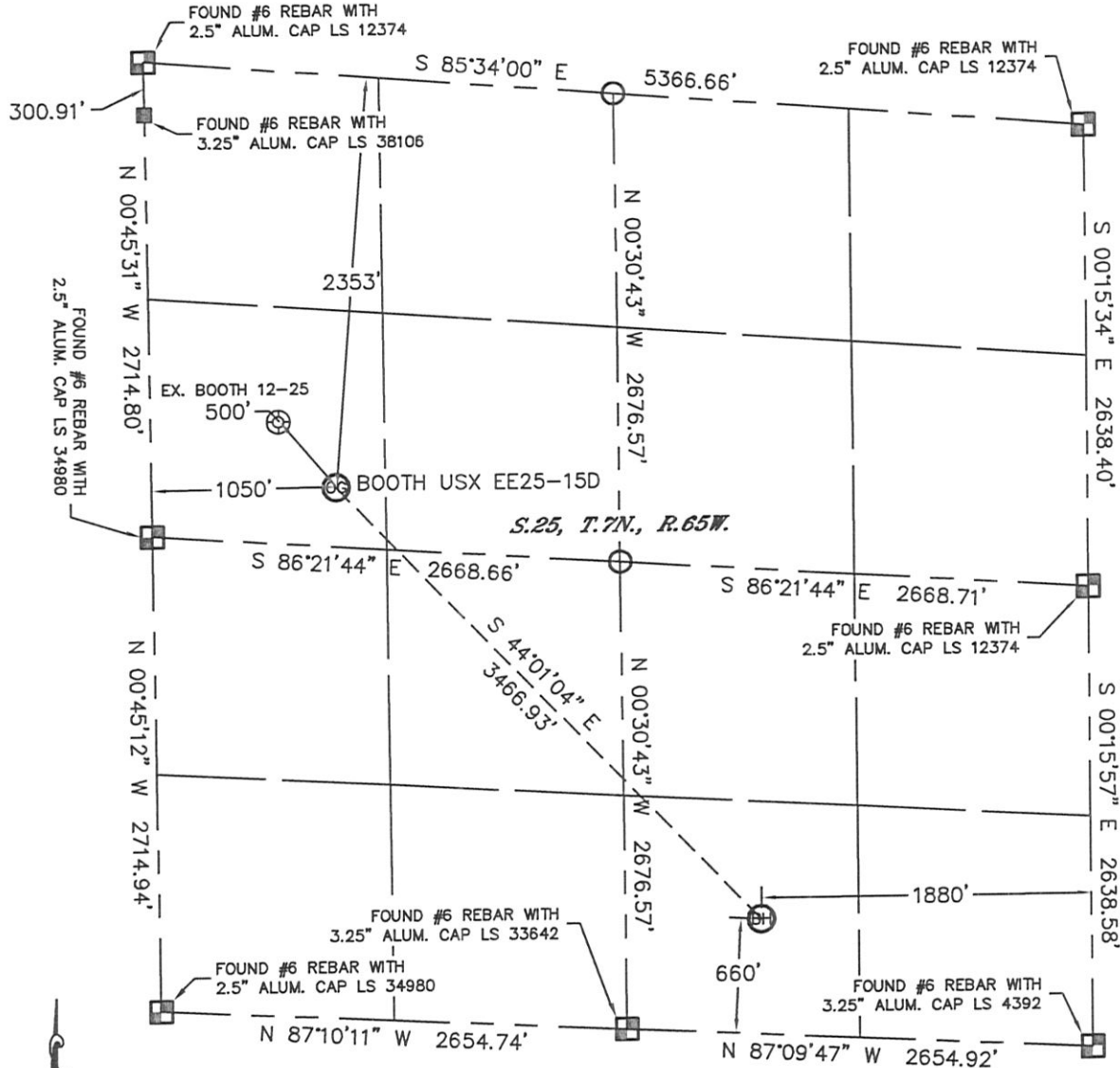


# WELL LOCATION CERTIFICATE

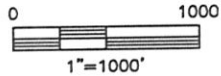
SECTION: 25  
TOWNSHIP: 7N  
RANGE: 65W

THIS MAP DOES NOT REPRESENT A BOUNDARY SURVEY



In accordance with a request from Matt Verbit with Noble Energy Inc. Lat40°, Inc. has determined the surface location of the BOOTH USX EE25-15D to be 2353' from the NORTH line and 1050' from the WEST line and the bottom hole to be 660' from the SOUTH line and 1880' from the EAST line as measured at right angles from the section lines of Section 25, Township 7 North, Range 65 West of the Sixth Principal Meridian, County of Weld, State of Colorado.

I hereby state that this Well Location Certificate was prepared by me, or under my direct supervision, that the fieldwork was completed on 6/10/11, for and on behalf of Noble Energy Inc. That this is not a Land Survey Plat or an Improvement Survey Plat, and that it is not to be relied upon for establishment of fence, building, or other future improvement lines.





**NOTE:**

- 1) Bearings shown are Grid Bearings of the Colorado State Plane Coordinate System, North Zone, North American Datum 1983/2007. The lineal dimensions as contained herein are based upon the "U.S. Survey Foot."
- 2) Ground elevations are based on an observed GPS elevation (NAVD 1988 DATUM).
- 3) NEAREST EXISTING WELL: BOOTH 12-25, 500'
- 4) IMPROVEMENTS: See LOCATION DRAWING for all visible improvements within 400' of disturbed area.
- 5) SURFACE USE: IRRIGATED CROP FIELD
- 6) INSTRUMENT OPERATOR: AARON LUND

**NOTE**

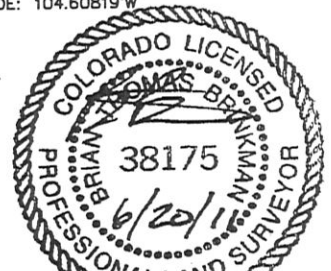
According to Colorado law, you must commence any legal action based upon any defect in this W.L.C. within three years after you discover such defect. In no event, may any action based upon any defect in this survey be commenced more than ten years after the date of the certificate shown hereon. (13-80-105 C.R.S.)

**LEGEND**

-  = ALIQUOT MONUMENT AS DESCRIBED
-  = CALCULATED POSITION

**SURFACE LOCATION**  
 LATITUDE: 40.54562°N  
 LONGITUDE: 104.61676°W  
 PDOP: 1.3  
 ELEV: 4819'  
 1/4, 1/4: SW1/4NW1/4  
 NEAREST PROPERTY LINE: 1050' WEST

**BOTTOM HOLE**  
 LATITUDE: 40.53871°N  
 LONGITUDE: 104.60819°W



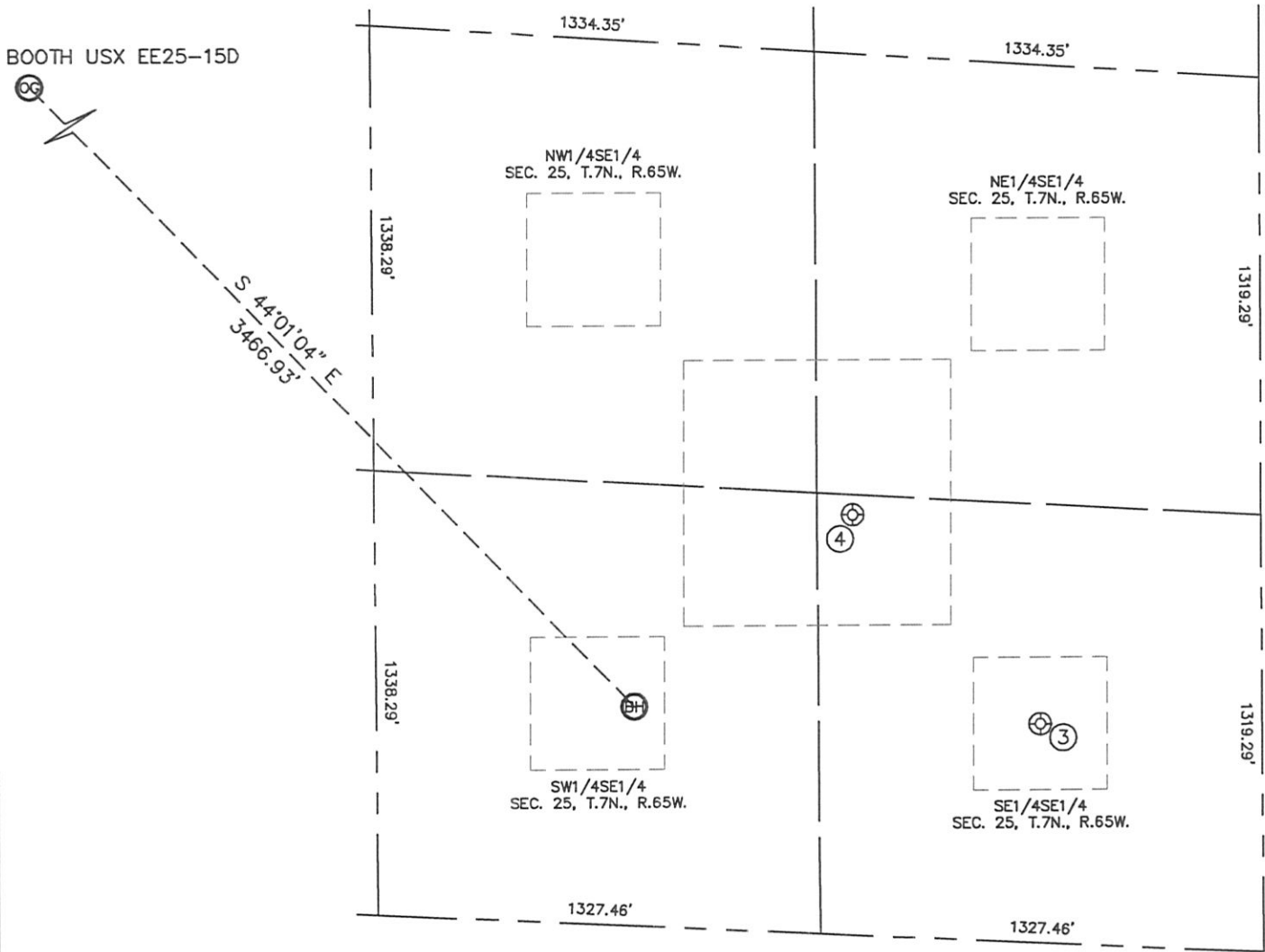
Brian T. Brinkman—On behalf of Lat40°, Inc.  
 Colorado Licensed Professional  
 Land Surveyor No. 38175

PROJECT#: 2011148

# SITE SKETCH

BOOTH USX EE25-15D

SECTION: 25  
TOWNSHIP: 7N  
RANGE: 65W



③  
BOOTH USX EE25-16  
SE1/4SE1/4  
660' FSL  
662' FEL  
LAT-40.53852N  
LONG-104.60381W  
PDOP: 2.5  
ELEV: 4852'

④  
BOOTH USX EE25-23  
SE1/4SE1/4  
1265' FSL  
1222' FEL  
LAT-40.54027N  
LONG-104.60581W  
PDOP: 2.0  
ELEV: 4853'

