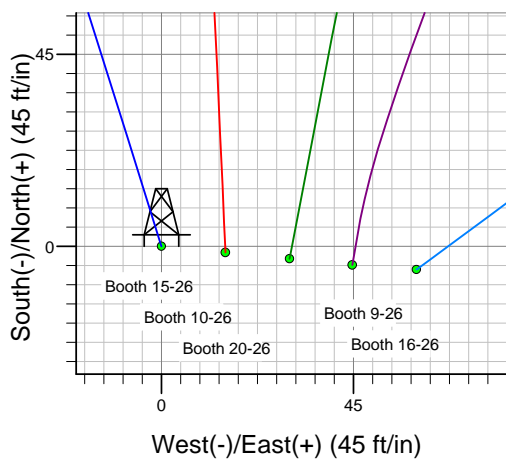
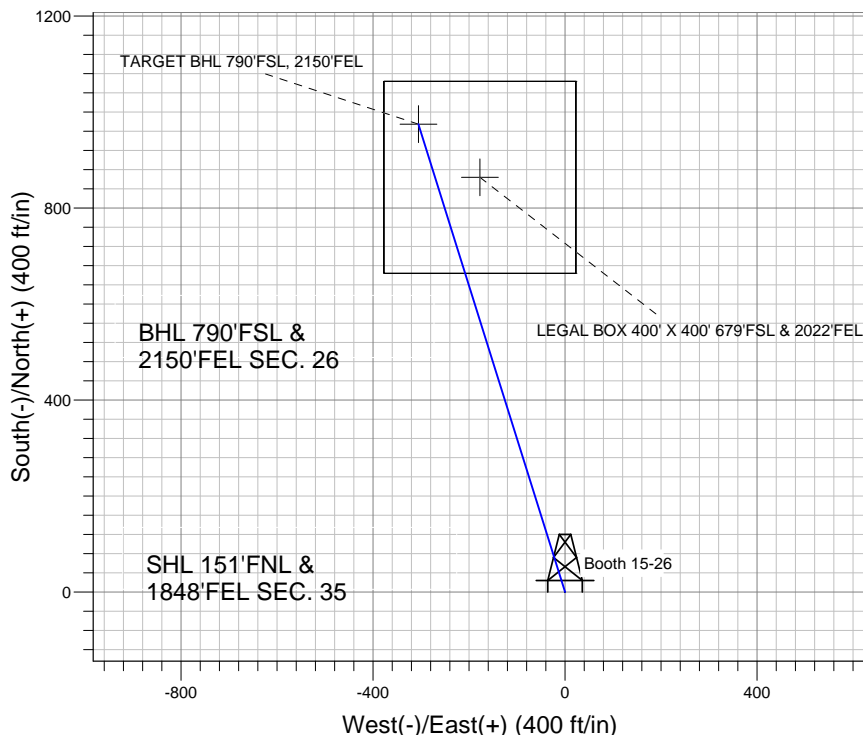
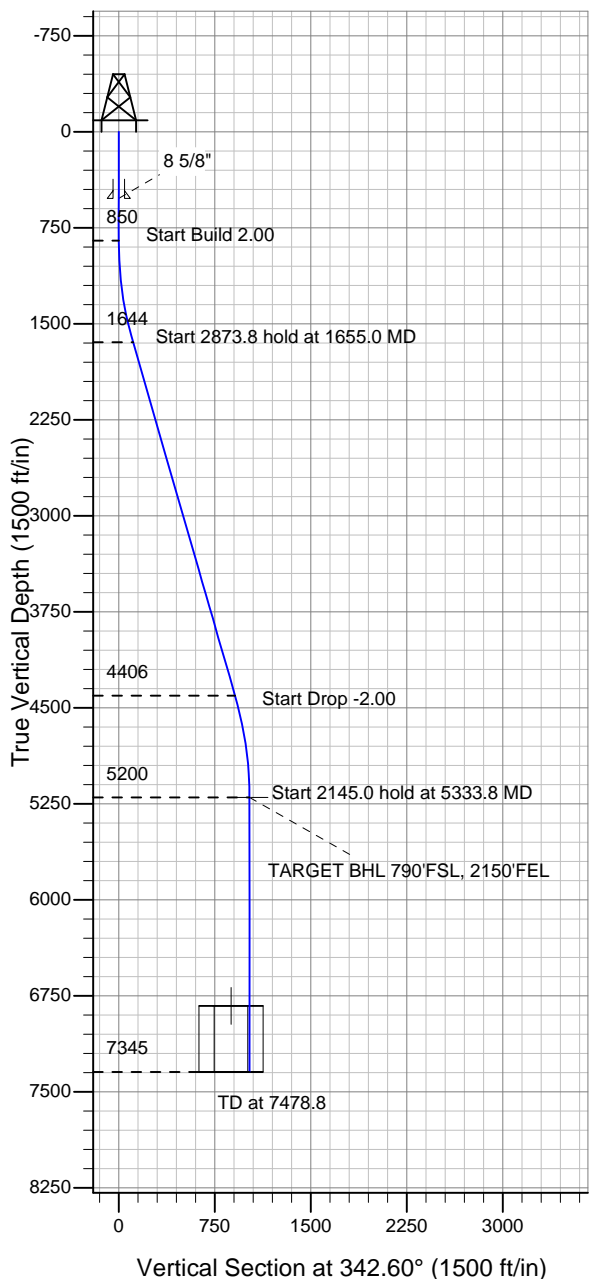


Well Name: Booth 15-26

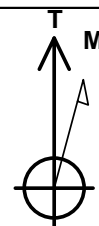
Surface Location: Booth 15-26 Pad Sec.35-T7N-R65W
 North American Datum 1983 , US State Plane 1983 , Colorado Northern Zone
 Ground Elevation: 4834.0

+N/-S +E/-W Northing Easting Latitude Longitude Slot
 0.0 0.0 1439857.66 3242600.67 40.537532 -104.627150
 Original Well Elev WELL @ 4844.0ft (Original Well Elev)

BAYSWATER EXPLORATION & PRODUCTION



Booth 15-26 Pad Sec.35-T7N-R65W
 Booth 15-26
 Plan #1 (8-17-11)
 17:05, August 19 2011



Azimuths to True North
 Magnetic North: 8.78°

Magnetic Field
 Strength: 53199.9snT
 Dip Angle: 67.18°
 Date: 8/17/2011
 Model: IGRF2010

WELLBORE TARGET DETAILS (LAT/LONG)

Name	TVD	+N/-S	+E/-W	Latitude	Longitude	Shape
TARGET BHL 790°FSL, 2150°FEL	5200.0	974.9	-305.5	40.540208	-104.628249	Point
LEGAL BOX 400' X 400' 679°FSL & 2022°FEL	6829.0	863.9	-177.5	40.539903	-104.627789	Rectangle (Sides: L400.0 W400.0)

SECTION DETAILS

Sec	MD	Inc	Azi	TVD	+N/-S	+E/-W	DLeg	TFace	VSec	Target
1	0.0	0.00	0.00	0.0	0.0	0.0	0.00	0.00	0.0	
2	850.0	0.00	0.00	850.0	0.0	0.0	0.00	0.00	0.0	
3	1655.0	16.10	342.60	1644.5	107.2	-33.6	2.00	342.60	112.4	
4	4528.8	16.10	342.60	4405.5	867.7	-271.9	0.00	0.00	909.3	
5	5333.8	0.00	0.00	5200.0	974.9	-305.5	2.00	180.00	1021.7	TARGET BHL 790°FSL, 2150°FEL
6	7478.8	0.00	0.00	7345.0	974.9	-305.5	0.00	0.00	1021.7	



BAYSWATER EXPLORATION & PRODUCTION

SEC.35-T7N-R65W

Booth 15-26 Pad Sec.35-T7N-R65W

Booth 15-26

Wellbore #1

Plan: Plan #1 (8-17-11)

Standard Planning Report

19 August, 2011

Database:	Landmark	Local Co-ordinate Reference:	Well Booth 15-26
Company:	BAYSWATER EXPLORATION & PRODUCTION	TVD Reference:	WELL @ 4844.0ft (Original Well Elev)
Project:	SEC.35-T7N-R65W	MD Reference:	WELL @ 4844.0ft (Original Well Elev)
Site:	Booth 15-26 Pad Sec.35-T7N-R65W	North Reference:	True
Well:	Booth 15-26	Survey Calculation Method:	Minimum Curvature
Wellbore:	Wellbore #1		
Design:	Plan #1 (8-17-11)		

Project	SEC.35-T7N-R65W, Weld County, Colorado		
Map System:	US State Plane 1983	System Datum:	Mean Sea Level
Geo Datum:	North American Datum 1983		Using Well Reference Point
Map Zone:	Colorado Northern Zone		Using geodetic scale factor

Site	Booth 15-26 Pad Sec.35-T7N-R65W				
Site Position:		Northing:	1,439,857.67 ft	Latitude:	40.537532
From:	Lat/Long	Easting:	3,242,600.67 ft	Longitude:	-104.627150
Position Uncertainty:	0.0 ft	Slot Radius:	"	Grid Convergence:	0.56 °

Well	Booth 15-26					
Well Position	+N-S	0.0 ft	Northing:	1,439,857.66 ft	Latitude:	40.537532
	+E-W	0.0 ft	Easting:	3,242,600.67 ft	Longitude:	-104.627150
Position Uncertainty		0.0 ft	Wellhead Elevation:	ft	Ground Level:	4,834.0 ft

Wellbore	Wellbore #1				
Magnetics	Model Name	Sample Date	Declination (°)	Dip Angle (°)	Field Strength (nT)
	IGRF2010	8/17/2011	8.78	67.18	53,200

Design	Plan #1 (8-17-11)			
Audit Notes:				
Version:	Phase:	PROTOTYPE	Tie On Depth:	0.0
Vertical Section:	Depth From (TVD) (ft)	+N/-S (ft)	+E/-W (ft)	Direction (°)
	0.0	0.0	0.0	342.60

Plan Sections										
Measured Depth (ft)	Inclination (°)	Azimuth (°)	Vertical Depth (ft)	+N/-S (ft)	+E/-W (ft)	Dogleg Rate (°/100ft)	Build Rate (°/100ft)	Turn Rate (°/100ft)	TFO (°)	Target
0.0	0.00	0.00	0.0	0.0	0.0	0.00	0.00	0.00	0.00	
850.0	0.00	0.00	850.0	0.0	0.0	0.00	0.00	0.00	0.00	
1,655.0	16.10	342.60	1,644.5	107.2	-33.6	2.00	2.00	0.00	342.60	
4,528.8	16.10	342.60	4,405.5	867.7	-271.9	0.00	0.00	0.00	0.00	
5,333.8	0.00	0.00	5,200.0	974.9	-305.5	2.00	-2.00	0.00	180.00	TARGET BHL 790'I
7,478.8	0.00	0.00	7,345.0	974.9	-305.5	0.00	0.00	0.00	0.00	

Database:	Landmark	Local Co-ordinate Reference:	Well Booth 15-26
Company:	BAYSWATER EXPLORATION & PRODUCTION	TVD Reference:	WELL @ 4844.0ft (Original Well Elev)
Project:	SEC.35-T7N-R65W	MD Reference:	WELL @ 4844.0ft (Original Well Elev)
Site:	Booth 15-26 Pad Sec.35-T7N-R65W	North Reference:	True
Well:	Booth 15-26	Survey Calculation Method:	Minimum Curvature
Wellbore:	Wellbore #1		
Design:	Plan #1 (8-17-11)		

Planned Survey

Measured Depth (ft)	Inclination (°)	Azimuth (°)	Vertical Depth (ft)	+N/-S (ft)	+E/-W (ft)	Vertical Section (ft)	Dogleg Rate (°/100ft)	Build Rate (°/100ft)	Turn Rate (°/100ft)
0.0	0.00	0.00	0.0	0.0	0.0	0.0	0.00	0.00	0.00
40.0	0.00	0.00	40.0	0.0	0.0	0.0	0.00	0.00	0.00
80.0	0.00	0.00	80.0	0.0	0.0	0.0	0.00	0.00	0.00
120.0	0.00	0.00	120.0	0.0	0.0	0.0	0.00	0.00	0.00
160.0	0.00	0.00	160.0	0.0	0.0	0.0	0.00	0.00	0.00
200.0	0.00	0.00	200.0	0.0	0.0	0.0	0.00	0.00	0.00
240.0	0.00	0.00	240.0	0.0	0.0	0.0	0.00	0.00	0.00
280.0	0.00	0.00	280.0	0.0	0.0	0.0	0.00	0.00	0.00
320.0	0.00	0.00	320.0	0.0	0.0	0.0	0.00	0.00	0.00
360.0	0.00	0.00	360.0	0.0	0.0	0.0	0.00	0.00	0.00
400.0	0.00	0.00	400.0	0.0	0.0	0.0	0.00	0.00	0.00
440.0	0.00	0.00	440.0	0.0	0.0	0.0	0.00	0.00	0.00
480.0	0.00	0.00	480.0	0.0	0.0	0.0	0.00	0.00	0.00
520.0	0.00	0.00	520.0	0.0	0.0	0.0	0.00	0.00	0.00
8 5/8"									
560.0	0.00	0.00	560.0	0.0	0.0	0.0	0.00	0.00	0.00
600.0	0.00	0.00	600.0	0.0	0.0	0.0	0.00	0.00	0.00
640.0	0.00	0.00	640.0	0.0	0.0	0.0	0.00	0.00	0.00
680.0	0.00	0.00	680.0	0.0	0.0	0.0	0.00	0.00	0.00
720.0	0.00	0.00	720.0	0.0	0.0	0.0	0.00	0.00	0.00
760.0	0.00	0.00	760.0	0.0	0.0	0.0	0.00	0.00	0.00
800.0	0.00	0.00	800.0	0.0	0.0	0.0	0.00	0.00	0.00
840.0	0.00	0.00	840.0	0.0	0.0	0.0	0.00	0.00	0.00
850.0	0.00	0.00	850.0	0.0	0.0	0.0	0.00	0.00	0.00
880.0	0.60	342.60	880.0	0.1	0.0	0.2	2.00	2.00	0.00
920.0	1.40	342.60	920.0	0.8	-0.3	0.9	2.00	2.00	0.00
960.0	2.20	342.60	960.0	2.0	-0.6	2.1	2.00	2.00	0.00
1,000.0	3.00	342.60	999.9	3.7	-1.2	3.9	2.00	2.00	0.00
1,040.0	3.80	342.60	1,039.9	6.0	-1.9	6.3	2.00	2.00	0.00
1,080.0	4.60	342.60	1,079.8	8.8	-2.8	9.2	2.00	2.00	0.00
1,120.0	5.40	342.60	1,119.6	12.1	-3.8	12.7	2.00	2.00	0.00
1,160.0	6.20	342.60	1,159.4	16.0	-5.0	16.8	2.00	2.00	0.00
1,200.0	7.00	342.60	1,199.1	20.4	-6.4	21.4	2.00	2.00	0.00
1,240.0	7.80	342.60	1,238.8	25.3	-7.9	26.5	2.00	2.00	0.00
1,280.0	8.60	342.60	1,278.4	30.7	-9.6	32.2	2.00	2.00	0.00
1,320.0	9.40	342.60	1,317.9	36.7	-11.5	38.5	2.00	2.00	0.00
1,360.0	10.20	342.60	1,357.3	43.2	-13.5	45.3	2.00	2.00	0.00
1,400.0	11.00	342.60	1,396.6	50.2	-15.7	52.6	2.00	2.00	0.00
1,440.0	11.80	342.60	1,435.8	57.8	-18.1	60.5	2.00	2.00	0.00
1,480.0	12.60	342.60	1,474.9	65.8	-20.6	69.0	2.00	2.00	0.00
1,520.0	13.40	342.60	1,513.9	74.4	-23.3	78.0	2.00	2.00	0.00
1,560.0	14.20	342.60	1,552.8	83.5	-26.2	87.5	2.00	2.00	0.00
1,600.0	15.00	342.60	1,591.5	93.2	-29.2	97.6	2.00	2.00	0.00
1,640.0	15.80	342.60	1,630.0	103.3	-32.4	108.2	2.00	2.00	0.00
1,655.0	16.10	342.60	1,644.5	107.2	-33.6	112.4	2.00	2.00	0.00
1,680.0	16.10	342.60	1,668.5	113.8	-35.7	119.3	0.00	0.00	0.00
1,720.0	16.10	342.60	1,706.9	124.4	-39.0	130.4	0.00	0.00	0.00
1,760.0	16.10	342.60	1,745.3	135.0	-42.3	141.5	0.00	0.00	0.00
1,800.0	16.10	342.60	1,783.8	145.6	-45.6	152.6	0.00	0.00	0.00
1,840.0	16.10	342.60	1,822.2	156.2	-48.9	163.7	0.00	0.00	0.00
1,880.0	16.10	342.60	1,860.6	166.8	-52.2	174.8	0.00	0.00	0.00
1,920.0	16.10	342.60	1,899.1	177.3	-55.6	185.8	0.00	0.00	0.00
1,960.0	16.10	342.60	1,937.5	187.9	-58.9	196.9	0.00	0.00	0.00

Database:	Landmark	Local Co-ordinate Reference:	Well Booth 15-26
Company:	BAYSWATER EXPLORATION & PRODUCTION	TVD Reference:	WELL @ 4844.0ft (Original Well Elev)
Project:	SEC.35-T7N-R65W	MD Reference:	WELL @ 4844.0ft (Original Well Elev)
Site:	Booth 15-26 Pad Sec.35-T7N-R65W	North Reference:	True
Well:	Booth 15-26	Survey Calculation Method:	Minimum Curvature
Wellbore:	Wellbore #1		
Design:	Plan #1 (8-17-11)		

Planned Survey									
Measured Depth (ft)	Inclination (°)	Azimuth (°)	Vertical Depth (ft)	+N/-S (ft)	+E/-W (ft)	Vertical Section (ft)	Dogleg Rate (°/100ft)	Build Rate (°/100ft)	Turn Rate (°/100ft)
2,000.0	16.10	342.60	1,975.9	198.5	-62.2	208.0	0.00	0.00	0.00
2,040.0	16.10	342.60	2,014.3	209.1	-65.5	219.1	0.00	0.00	0.00
2,080.0	16.10	342.60	2,052.8	219.7	-68.8	230.2	0.00	0.00	0.00
2,120.0	16.10	342.60	2,091.2	230.3	-72.1	241.3	0.00	0.00	0.00
2,160.0	16.10	342.60	2,129.6	240.9	-75.5	252.4	0.00	0.00	0.00
2,200.0	16.10	342.60	2,168.1	251.4	-78.8	263.5	0.00	0.00	0.00
2,240.0	16.10	342.60	2,206.5	262.0	-82.1	274.6	0.00	0.00	0.00
2,280.0	16.10	342.60	2,244.9	272.6	-85.4	285.7	0.00	0.00	0.00
2,320.0	16.10	342.60	2,283.4	283.2	-88.7	296.8	0.00	0.00	0.00
2,360.0	16.10	342.60	2,321.8	293.8	-92.0	307.9	0.00	0.00	0.00
2,400.0	16.10	342.60	2,360.2	304.4	-95.4	319.0	0.00	0.00	0.00
2,440.0	16.10	342.60	2,398.7	315.0	-98.7	330.1	0.00	0.00	0.00
2,480.0	16.10	342.60	2,437.1	325.5	-102.0	341.1	0.00	0.00	0.00
2,520.0	16.10	342.60	2,475.5	336.1	-105.3	352.2	0.00	0.00	0.00
2,560.0	16.10	342.60	2,514.0	346.7	-108.6	363.3	0.00	0.00	0.00
2,600.0	16.10	342.60	2,552.4	357.3	-111.9	374.4	0.00	0.00	0.00
2,640.0	16.10	342.60	2,590.8	367.9	-115.3	385.5	0.00	0.00	0.00
2,680.0	16.10	342.60	2,629.2	378.5	-118.6	396.6	0.00	0.00	0.00
2,720.0	16.10	342.60	2,667.7	389.1	-121.9	407.7	0.00	0.00	0.00
2,760.0	16.10	342.60	2,706.1	399.6	-125.2	418.8	0.00	0.00	0.00
2,800.0	16.10	342.60	2,744.5	410.2	-128.5	429.9	0.00	0.00	0.00
2,840.0	16.10	342.60	2,783.0	420.8	-131.8	441.0	0.00	0.00	0.00
2,880.0	16.10	342.60	2,821.4	431.4	-135.2	452.1	0.00	0.00	0.00
2,920.0	16.10	342.60	2,859.8	442.0	-138.5	463.2	0.00	0.00	0.00
2,960.0	16.10	342.60	2,898.3	452.6	-141.8	474.3	0.00	0.00	0.00
3,000.0	16.10	342.60	2,936.7	463.1	-145.1	485.3	0.00	0.00	0.00
3,040.0	16.10	342.60	2,975.1	473.7	-148.4	496.4	0.00	0.00	0.00
3,080.0	16.10	342.60	3,013.6	484.3	-151.7	507.5	0.00	0.00	0.00
3,120.0	16.10	342.60	3,052.0	494.9	-155.1	518.6	0.00	0.00	0.00
3,160.0	16.10	342.60	3,090.4	505.5	-158.4	529.7	0.00	0.00	0.00
3,200.0	16.10	342.60	3,128.9	516.1	-161.7	540.8	0.00	0.00	0.00
3,240.0	16.10	342.60	3,167.3	526.7	-165.0	551.9	0.00	0.00	0.00
3,280.0	16.10	342.60	3,205.7	537.2	-168.3	563.0	0.00	0.00	0.00
3,320.0	16.10	342.60	3,244.1	547.8	-171.6	574.1	0.00	0.00	0.00
3,360.0	16.10	342.60	3,282.6	558.4	-175.0	585.2	0.00	0.00	0.00
3,400.0	16.10	342.60	3,321.0	569.0	-178.3	596.3	0.00	0.00	0.00
3,440.0	16.10	342.60	3,359.4	579.6	-181.6	607.4	0.00	0.00	0.00
3,480.0	16.10	342.60	3,397.9	590.2	-184.9	618.5	0.00	0.00	0.00
3,520.0	16.10	342.60	3,436.3	600.8	-188.2	629.6	0.00	0.00	0.00
3,560.0	16.10	342.60	3,474.7	611.3	-191.5	640.6	0.00	0.00	0.00
3,600.0	16.10	342.60	3,513.2	621.9	-194.9	651.7	0.00	0.00	0.00
3,640.0	16.10	342.60	3,551.6	632.5	-198.2	662.8	0.00	0.00	0.00
3,680.0	16.10	342.60	3,590.0	643.1	-201.5	673.9	0.00	0.00	0.00
3,720.0	16.10	342.60	3,628.5	653.7	-204.8	685.0	0.00	0.00	0.00
3,760.0	16.10	342.60	3,666.9	664.3	-208.1	696.1	0.00	0.00	0.00
3,800.0	16.10	342.60	3,705.3	674.9	-211.4	707.2	0.00	0.00	0.00
3,840.0	16.10	342.60	3,743.7	685.4	-214.8	718.3	0.00	0.00	0.00
3,876.7	16.10	342.60	3,779.0	695.1	-217.8	728.5	0.00	0.00	0.00
PARKMAN									
3,880.0	16.10	342.60	3,782.2	696.0	-218.1	729.4	0.00	0.00	0.00
3,920.0	16.10	342.60	3,820.6	706.6	-221.4	740.5	0.00	0.00	0.00
3,960.0	16.10	342.60	3,859.0	717.2	-224.7	751.6	0.00	0.00	0.00
4,000.0	16.10	342.60	3,897.5	727.8	-228.0	762.7	0.00	0.00	0.00

Database:	Landmark	Local Co-ordinate Reference:	Well Booth 15-26
Company:	BAYSWATER EXPLORATION & PRODUCTION	TVD Reference:	WELL @ 4844.0ft (Original Well Elev)
Project:	SEC.35-T7N-R65W	MD Reference:	WELL @ 4844.0ft (Original Well Elev)
Site:	Booth 15-26 Pad Sec.35-T7N-R65W	North Reference:	True
Well:	Booth 15-26	Survey Calculation Method:	Minimum Curvature
Wellbore:	Wellbore #1		
Design:	Plan #1 (8-17-11)		

Planned Survey									
Measured Depth (ft)	Inclination (°)	Azimuth (°)	Vertical Depth (ft)	+N/-S (ft)	+E/-W (ft)	Vertical Section (ft)	Dogleg Rate (°/100ft)	Build Rate (°/100ft)	Turn Rate (°/100ft)
4,040.0	16.10	342.60	3,935.9	738.4	-231.3	773.8	0.00	0.00	0.00
4,080.0	16.10	342.60	3,974.3	748.9	-234.7	784.8	0.00	0.00	0.00
4,120.0	16.10	342.60	4,012.8	759.5	-238.0	795.9	0.00	0.00	0.00
4,160.0	16.10	342.60	4,051.2	770.1	-241.3	807.0	0.00	0.00	0.00
4,200.0	16.10	342.60	4,089.6	780.7	-244.6	818.1	0.00	0.00	0.00
4,240.0	16.10	342.60	4,128.1	791.3	-247.9	829.2	0.00	0.00	0.00
4,280.0	16.10	342.60	4,166.5	801.9	-251.2	840.3	0.00	0.00	0.00
4,320.0	16.10	342.60	4,204.9	812.5	-254.6	851.4	0.00	0.00	0.00
4,360.0	16.10	342.60	4,243.4	823.0	-257.9	862.5	0.00	0.00	0.00
4,400.0	16.10	342.60	4,281.8	833.6	-261.2	873.6	0.00	0.00	0.00
4,440.0	16.10	342.60	4,320.2	844.2	-264.5	884.7	0.00	0.00	0.00
4,480.0	16.10	342.60	4,358.6	854.8	-267.8	895.8	0.00	0.00	0.00
4,520.0	16.10	342.60	4,397.1	865.4	-271.1	906.9	0.00	0.00	0.00
4,528.8	16.10	342.60	4,405.5	867.7	-271.9	909.3	0.00	0.00	0.00
4,560.0	15.48	342.60	4,435.6	875.8	-274.4	917.8	2.00	-2.00	0.00
4,600.0	14.68	342.60	4,474.2	885.7	-277.5	928.2	2.00	-2.00	0.00
4,640.0	13.88	342.60	4,512.9	895.2	-280.5	938.1	2.00	-2.00	0.00
4,680.0	13.08	342.60	4,551.8	904.1	-283.2	947.4	2.00	-2.00	0.00
4,720.0	12.28	342.60	4,590.9	912.4	-285.9	956.2	2.00	-2.00	0.00
4,760.0	11.48	342.60	4,630.0	920.3	-288.3	964.4	2.00	-2.00	0.00
4,800.0	10.68	342.60	4,669.3	927.6	-290.6	972.1	2.00	-2.00	0.00
4,840.0	9.88	342.60	4,708.6	934.4	-292.8	979.2	2.00	-2.00	0.00
4,880.0	9.08	342.60	4,748.1	940.7	-294.7	985.8	2.00	-2.00	0.00
4,920.0	8.28	342.60	4,787.6	946.5	-296.5	991.8	2.00	-2.00	0.00
4,960.0	7.48	342.60	4,827.2	951.7	-298.2	997.3	2.00	-2.00	0.00
5,000.0	6.68	342.60	4,866.9	956.4	-299.7	1,002.2	2.00	-2.00	0.00
5,040.0	5.88	342.60	4,906.7	960.6	-301.0	1,006.6	2.00	-2.00	0.00
5,080.0	5.08	342.60	4,946.5	964.2	-302.1	1,010.4	2.00	-2.00	0.00
5,120.0	4.28	342.60	4,986.4	967.3	-303.1	1,013.7	2.00	-2.00	0.00
5,160.0	3.48	342.60	5,026.3	969.9	-303.9	1,016.4	2.00	-2.00	0.00
5,200.0	2.68	342.60	5,066.2	972.0	-304.5	1,018.5	2.00	-2.00	0.00
5,240.0	1.88	342.60	5,106.2	973.5	-305.0	1,020.1	2.00	-2.00	0.00
5,280.0	1.08	342.60	5,146.2	974.5	-305.3	1,021.2	2.00	-2.00	0.00
5,320.0	0.28	342.60	5,186.2	974.9	-305.4	1,021.6	2.00	-2.00	0.00
5,333.8	0.00	0.00	5,200.0	974.9	-305.5	1,021.7	2.00	-2.00	0.00
TARGET BHL 790'FSL, 2150'FEL									
5,360.0	0.00	0.00	5,226.2	974.9	-305.5	1,021.7	0.00	0.00	0.00
5,400.0	0.00	0.00	5,266.2	974.9	-305.5	1,021.7	0.00	0.00	0.00
5,440.0	0.00	0.00	5,306.2	974.9	-305.5	1,021.7	0.00	0.00	0.00
5,480.0	0.00	0.00	5,346.2	974.9	-305.5	1,021.7	0.00	0.00	0.00
5,520.0	0.00	0.00	5,386.2	974.9	-305.5	1,021.7	0.00	0.00	0.00
5,560.0	0.00	0.00	5,426.2	974.9	-305.5	1,021.7	0.00	0.00	0.00
5,600.0	0.00	0.00	5,466.2	974.9	-305.5	1,021.7	0.00	0.00	0.00
5,640.0	0.00	0.00	5,506.2	974.9	-305.5	1,021.7	0.00	0.00	0.00
5,680.0	0.00	0.00	5,546.2	974.9	-305.5	1,021.7	0.00	0.00	0.00
5,720.0	0.00	0.00	5,586.2	974.9	-305.5	1,021.7	0.00	0.00	0.00
5,760.0	0.00	0.00	5,626.2	974.9	-305.5	1,021.7	0.00	0.00	0.00
5,800.0	0.00	0.00	5,666.2	974.9	-305.5	1,021.7	0.00	0.00	0.00
5,840.0	0.00	0.00	5,706.2	974.9	-305.5	1,021.7	0.00	0.00	0.00
5,880.0	0.00	0.00	5,746.2	974.9	-305.5	1,021.7	0.00	0.00	0.00
5,920.0	0.00	0.00	5,786.2	974.9	-305.5	1,021.7	0.00	0.00	0.00
5,960.0	0.00	0.00	5,826.2	974.9	-305.5	1,021.7	0.00	0.00	0.00

Database:	Landmark	Local Co-ordinate Reference:	Well Booth 15-26
Company:	BAYSWATER EXPLORATION & PRODUCTION	TVD Reference:	WELL @ 4844.0ft (Original Well Elev)
Project:	SEC.35-T7N-R65W	MD Reference:	WELL @ 4844.0ft (Original Well Elev)
Site:	Booth 15-26 Pad Sec.35-T7N-R65W	North Reference:	True
Well:	Booth 15-26	Survey Calculation Method:	Minimum Curvature
Wellbore:	Wellbore #1		
Design:	Plan #1 (8-17-11)		

Planned Survey

Measured Depth (ft)	Inclination (°)	Azimuth (°)	Vertical Depth (ft)	+N/-S (ft)	+E/-W (ft)	Vertical Section (ft)	Dogleg Rate (°/100ft)	Build Rate (°/100ft)	Turn Rate (°/100ft)
6,000.0	0.00	0.00	5,866.2	974.9	-305.5	1,021.7	0.00	0.00	0.00
6,040.0	0.00	0.00	5,906.2	974.9	-305.5	1,021.7	0.00	0.00	0.00
6,080.0	0.00	0.00	5,946.2	974.9	-305.5	1,021.7	0.00	0.00	0.00
6,120.0	0.00	0.00	5,986.2	974.9	-305.5	1,021.7	0.00	0.00	0.00
6,160.0	0.00	0.00	6,026.2	974.9	-305.5	1,021.7	0.00	0.00	0.00
6,200.0	0.00	0.00	6,066.2	974.9	-305.5	1,021.7	0.00	0.00	0.00
6,240.0	0.00	0.00	6,106.2	974.9	-305.5	1,021.7	0.00	0.00	0.00
6,280.0	0.00	0.00	6,146.2	974.9	-305.5	1,021.7	0.00	0.00	0.00
6,320.0	0.00	0.00	6,186.2	974.9	-305.5	1,021.7	0.00	0.00	0.00
6,360.0	0.00	0.00	6,226.2	974.9	-305.5	1,021.7	0.00	0.00	0.00
6,400.0	0.00	0.00	6,266.2	974.9	-305.5	1,021.7	0.00	0.00	0.00
6,440.0	0.00	0.00	6,306.2	974.9	-305.5	1,021.7	0.00	0.00	0.00
6,480.0	0.00	0.00	6,346.2	974.9	-305.5	1,021.7	0.00	0.00	0.00
6,520.0	0.00	0.00	6,386.2	974.9	-305.5	1,021.7	0.00	0.00	0.00
6,560.0	0.00	0.00	6,426.2	974.9	-305.5	1,021.7	0.00	0.00	0.00
6,600.0	0.00	0.00	6,466.2	974.9	-305.5	1,021.7	0.00	0.00	0.00
6,640.0	0.00	0.00	6,506.2	974.9	-305.5	1,021.7	0.00	0.00	0.00
6,680.0	0.00	0.00	6,546.2	974.9	-305.5	1,021.7	0.00	0.00	0.00
6,720.0	0.00	0.00	6,586.2	974.9	-305.5	1,021.7	0.00	0.00	0.00
6,760.0	0.00	0.00	6,626.2	974.9	-305.5	1,021.7	0.00	0.00	0.00
6,800.0	0.00	0.00	6,666.2	974.9	-305.5	1,021.7	0.00	0.00	0.00
6,840.0	0.00	0.00	6,706.2	974.9	-305.5	1,021.7	0.00	0.00	0.00
6,880.0	0.00	0.00	6,746.2	974.9	-305.5	1,021.7	0.00	0.00	0.00
6,920.0	0.00	0.00	6,786.2	974.9	-305.5	1,021.7	0.00	0.00	0.00
6,960.0	0.00	0.00	6,826.2	974.9	-305.5	1,021.7	0.00	0.00	0.00
6,962.8	0.00	0.00	6,829.0	974.9	-305.5	1,021.7	0.00	0.00	0.00
NOBRARA - LEGAL BOX 400' X 400' 679'FSL & 2022'FEL									
7,000.0	0.00	0.00	6,866.2	974.9	-305.5	1,021.7	0.00	0.00	0.00
7,040.0	0.00	0.00	6,906.2	974.9	-305.5	1,021.7	0.00	0.00	0.00
7,080.0	0.00	0.00	6,946.2	974.9	-305.5	1,021.7	0.00	0.00	0.00
7,120.0	0.00	0.00	6,986.2	974.9	-305.5	1,021.7	0.00	0.00	0.00
7,160.0	0.00	0.00	7,026.2	974.9	-305.5	1,021.7	0.00	0.00	0.00
7,200.0	0.00	0.00	7,066.2	974.9	-305.5	1,021.7	0.00	0.00	0.00
7,226.8	0.00	0.00	7,093.0	974.9	-305.5	1,021.7	0.00	0.00	0.00
FORT HAYS									
7,240.0	0.00	0.00	7,106.2	974.9	-305.5	1,021.7	0.00	0.00	0.00
7,262.8	0.00	0.00	7,129.0	974.9	-305.5	1,021.7	0.00	0.00	0.00
CODELL									
7,280.0	0.00	0.00	7,146.2	974.9	-305.5	1,021.7	0.00	0.00	0.00
7,310.8	0.00	0.00	7,177.0	974.9	-305.5	1,021.7	0.00	0.00	0.00
GREENHORN									
7,320.0	0.00	0.00	7,186.2	974.9	-305.5	1,021.7	0.00	0.00	0.00
7,360.0	0.00	0.00	7,226.2	974.9	-305.5	1,021.7	0.00	0.00	0.00
7,385.8	0.00	0.00	7,252.0	974.9	-305.5	1,021.7	0.00	0.00	0.00
GRANEROS									
7,400.0	0.00	0.00	7,266.2	974.9	-305.5	1,021.7	0.00	0.00	0.00
7,440.0	0.00	0.00	7,306.2	974.9	-305.5	1,021.7	0.00	0.00	0.00
7,478.8	0.00	0.00	7,345.0	974.9	-305.5	1,021.7	0.00	0.00	0.00

Database:	Landmark	Local Co-ordinate Reference:	Well Booth 15-26
Company:	BAYSWATER EXPLORATION & PRODUCTION	TVD Reference:	WELL @ 4844.0ft (Original Well Elev)
Project:	SEC.35-T7N-R65W	MD Reference:	WELL @ 4844.0ft (Original Well Elev)
Site:	Booth 15-26 Pad Sec.35-T7N-R65W	North Reference:	True
Well:	Booth 15-26	Survey Calculation Method:	Minimum Curvature
Wellbore:	Wellbore #1		
Design:	Plan #1 (8-17-11)		

Targets

Target Name

- hit/miss target	Dip Angle	Dip Dir.	TVD	+N/-S	+E/-W	Northing	Easting	Latitude	Longitude
- Shape	(°)	(°)	(ft)	(ft)	(ft)	(ft)	(ft)		
TARGET BHL 790'FS	0.00	0.00	5,200.0	974.9	-305.5	1,440,829.51	3,242,285.64	40.540208	-104.628249
- plan hits target center									
- Point									
LEGAL BOX 400' X 40'	0.00	0.00	6,829.0	863.9	-177.5	1,440,719.75	3,242,414.68	40.539903	-104.627789
- plan misses target center by 169.4ft at 6962.8ft MD (6829.0 TVD, 974.9 N, -305.5 E)									
- Rectangle (sides W400.0 H400.0 D516.0)									

Casing Points

Measured Depth	Vertical Depth	Name	Casing Diameter	Hole Diameter
(ft)	(ft)		(")	(")
520.0	520.0	8 5/8"	8-5/8	12-1/4

Formations

Measured Depth	Vertical Depth	Name	Lithology	Dip	Dip Direction
(ft)	(ft)			(°)	(°)
3,876.7	3,779.0	PARKMAN		0.00	
6,962.8	6,829.0	NIOBRARA		0.00	
7,226.8	7,093.0	FORT HAYS		0.00	
7,262.8	7,129.0	CODELL		0.00	
7,310.8	7,177.0	GREENHORN		0.00	
7,385.8	7,252.0	GRANEROS		0.00	



Directional

BAYSWATER EXPLORATION & PRODUCTION

SEC.35-T7N-R65W

Booth 15-26 Pad Sec.35-T7N-R65W

Booth 15-26

Wellbore #1

Plan #1 (8-17-11)

Anticollision Report

19 August, 2011

Company:	BAYSWATER EXPLORATION & PRODUCTION	Local Co-ordinate Reference:	Well Booth 15-26
Project:	SEC.35-T7N-R65W	TVD Reference:	WELL @ 4844.0ft (Original Well Elev)
Reference Site:	Booth 15-26 Pad Sec.35-T7N-R65W	MD Reference:	WELL @ 4844.0ft (Original Well Elev)
Site Error:	0.0ft	North Reference:	True
Reference Well:	Booth 15-26	Survey Calculation Method:	Minimum Curvature
Well Error:	0.0ft	Output errors are at	2.00 sigma
Reference Wellbore	Wellbore #1	Database:	Landmark
Reference Design:	Plan #1 (8-17-11)	Offset TVD Reference:	Offset Datum

Reference	Plan #1 (8-17-11)		
Filter type:	NO GLOBAL FILTER: Using user defined selection & filtering criteria		
Interpolation Method:	Stations	Error Model:	ISCWSA
Depth Range:	Unlimited	Scan Method:	Closest Approach 3D
Results Limited by:	Maximum center-center distance of 1,000.0ft	Error Surface:	Elliptical Conic
Warning Levels Evaluated at:	2.00 Sigma		

Survey Tool Program	Date 8/19/2011			
From (ft)	To (ft)	Survey (Wellbore)	Tool Name	Description
0.0	7,478.5	Plan #1 (8-17-11) (Wellbore #1)	MWD	MWD - Standard

Summary						
Site Name	Reference Measured Depth (ft)	Offset Measured Depth (ft)	Distance Between Centres (ft)	Distance Between Ellipses (ft)	Separation Factor	Warning
Offset Well - Wellbore - Design						
Booth 15-26 Pad Sec.35-T7N-R65W						
Booth 10-26 - Wellbore #1 - Plan #1 (8-17-11)	310.6	310.7	14.9	13.8	12.734	CC, ES
Booth 10-26 - Wellbore #1 - Plan #1 (8-17-11)	500.0	499.1	20.2	18.1	9.818	SF

Offset Design Booth 15-26 Pad Sec.35-T7N-R65W - Booth 10-26 - Wellbore #1 - Plan #1 (8-17-11)												Offset Site Error:	0.0ft
Survey Program: 0-MWD												Offset Well Error:	0.0ft
Reference Measured Depth (ft)	Vertical Depth (ft)	Offset Measured Depth (ft)	Vertical Depth (ft)	Semi Major Axis Reference (ft)	Offset (ft)	Highside Toolface (°)	Offset Wellbore Centre +N/-S (ft)	+E/-W (ft)	Distance Between Centres (ft)	Distance Between Ellipses (ft)	Minimum Separation (ft)	Separation Factor	Warning
0.0	0.0	0.0	0.0	0.0	0.0	95.55	-1.5	15.0	15.1	15.1	0.00	N/A	
100.0	100.0	100.0	100.0	0.1	0.1	95.55	-1.5	15.0	15.1	14.9	0.22	67.093	
200.0	200.0	200.0	200.0	0.3	0.3	95.55	-1.5	15.0	15.1	14.4	0.67	22.364	
300.0	300.0	300.0	300.0	0.6	0.6	88.90	0.3	14.9	14.9	13.8	1.12	13.287	
310.6	310.6	310.7	310.6	0.6	0.6	87.40	0.7	14.9	14.9	13.8	1.17	12.734	CC, ES
400.0	400.0	399.8	399.7	0.8	0.8	69.47	5.5	14.7	15.7	14.1	1.58	9.939	
500.0	500.0	499.1	498.6	1.0	1.0	45.35	14.1	14.3	20.2	18.1	2.05	9.818	SF
600.0	600.0	597.7	596.4	1.2	1.3	27.82	26.1	13.8	29.7	27.2	2.54	11.694	
700.0	700.0	695.4	692.9	1.5	1.6	17.59	41.2	13.1	43.8	40.8	3.03	14.464	
800.0	800.0	791.9	787.7	1.7	2.0	11.65	59.4	12.2	61.9	58.4	3.52	17.564	
850.0	850.0	839.6	834.3	1.8	2.2	9.61	69.6	11.8	72.3	68.5	3.77	19.151	
900.0	900.0	887.1	880.6	1.9	2.4	25.41	80.5	11.3	83.2	79.2	3.94	21.091	
1,000.0	999.9	981.6	971.9	2.1	2.8	23.54	104.4	10.2	105.1	100.7	4.41	23.805	
1,100.0	1,099.7	1,075.4	1,061.8	2.4	3.3	22.67	131.1	9.0	127.1	122.2	4.90	25.955	
1,200.0	1,199.1	1,168.5	1,150.1	2.6	3.9	22.34	160.5	7.7	149.1	143.7	5.39	27.653	
1,300.0	1,298.2	1,260.9	1,236.8	2.9	4.5	22.35	192.5	6.2	171.1	165.2	5.91	28.970	
1,400.0	1,396.6	1,352.7	1,321.8	3.2	5.1	22.57	227.1	4.6	193.1	186.7	6.43	30.026	
1,500.0	1,494.4	1,443.8	1,405.1	3.5	5.8	22.94	264.1	2.9	215.0	208.0	7.00	30.732	
1,600.0	1,591.5	1,539.0	1,491.1	3.9	6.6	23.46	304.9	1.1	236.3	228.7	7.60	31.079	
1,655.0	1,644.5	1,593.0	1,539.8	4.1	7.0	23.86	328.1	0.0	246.8	238.8	7.95	31.021	
1,700.0	1,687.7	1,637.2	1,579.6	4.3	7.4	24.26	347.2	-0.8	255.0	246.7	8.26	30.851	
1,800.0	1,783.8	1,735.4	1,668.3	4.8	8.2	25.07	389.5	-2.8	273.2	264.2	8.97	30.462	
1,900.0	1,879.8	1,833.7	1,757.0	5.3	9.0	25.78	431.8	-4.7	291.5	281.8	9.69	30.070	
2,000.0	1,975.9	1,931.9	1,845.6	5.8	9.8	26.40	474.1	-6.6	309.9	299.4	10.44	29.687	

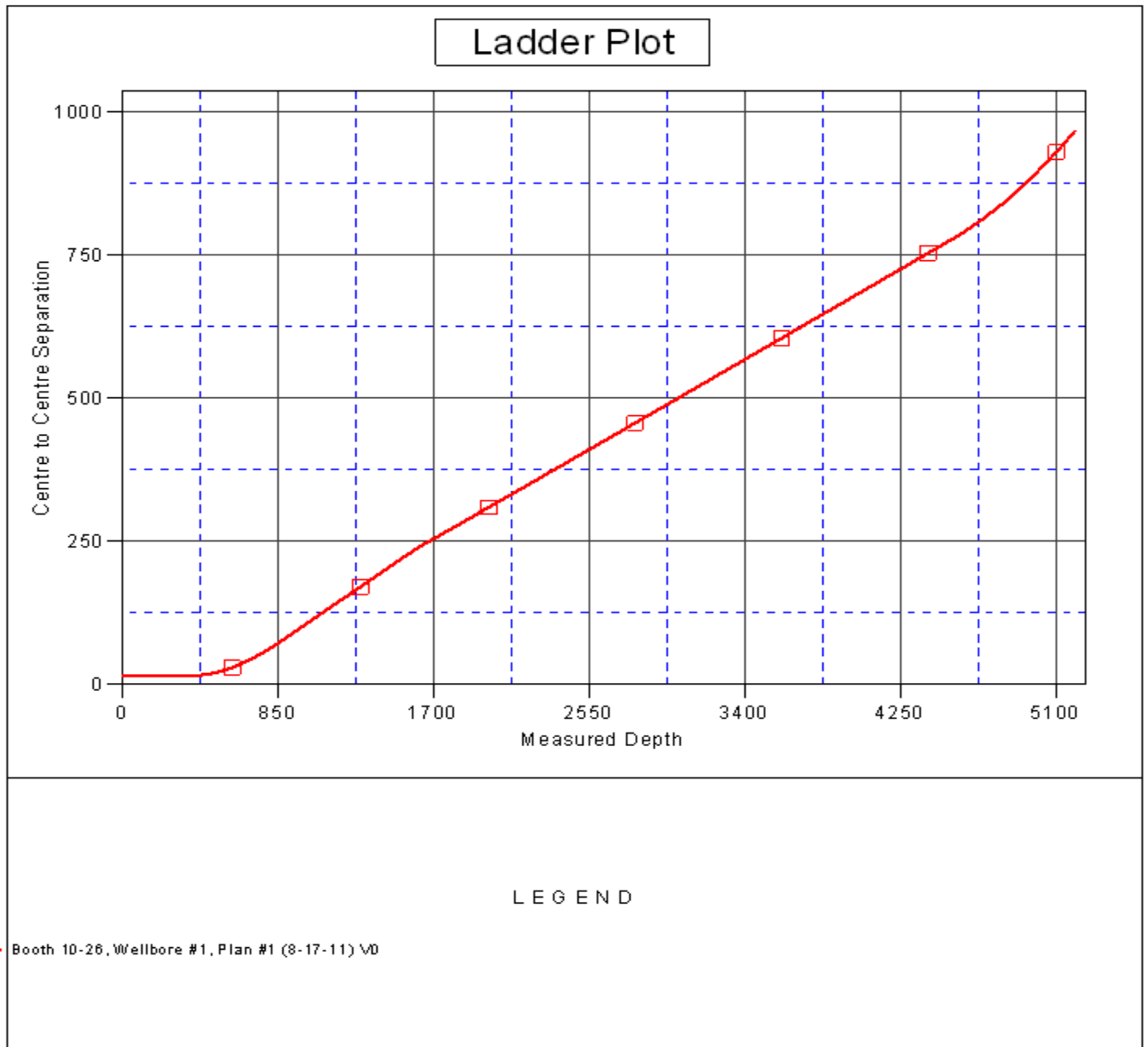
CC - Min centre to center distance or convergent point, SF - min separation factor, ES - min ellipse separation

Company:	BAYSWATER EXPLORATION & PRODUCTION	Local Co-ordinate Reference:	Well Booth 15-26
Project:	SEC.35-T7N-R65W	TVD Reference:	WELL @ 4844.0ft (Original Well Elev)
Reference Site:	Booth 15-26 Pad Sec.35-T7N-R65W	MD Reference:	WELL @ 4844.0ft (Original Well Elev)
Site Error:	0.0ft	North Reference:	True
Reference Well:	Booth 15-26	Survey Calculation Method:	Minimum Curvature
Well Error:	0.0ft	Output errors are at	2.00 sigma
Reference Wellbore	Wellbore #1	Database:	Landmark
Reference Design:	Plan #1 (8-17-11)	Offset TVD Reference:	Offset Datum

Offset Design Booth 15-26 Pad Sec.35-T7N-R65W - Booth 10-26 - Wellbore #1 - Plan #1 (8-17-11)													Offset Site Error:	0.0 ft
Survey Program: 0-MWD													Offset Well Error:	0.0 ft
Measured Depth (ft)	Vertical Depth (ft)	Measured Depth (ft)	Vertical Depth (ft)	Reference	Offset	Semi Major Axis Highside Toolface (°)	Offset Wellbore Centre +N/-S (ft)	+E/-W (ft)	Between Centres (ft)	Between Ellipses (ft)	Minimum Separation (ft)	Separation Factor	Warning	
2,100.0	2,072.0	2,030.2	1,934.3	6.3	10.6	26.96	516.4	-8.5	328.2	317.0	11.20	29.318		
2,200.0	2,168.1	2,128.4	2,022.9	6.8	11.4	27.45	558.7	-10.4	346.6	334.7	11.97	28.967		
2,300.0	2,264.2	2,226.7	2,111.6	7.4	12.2	27.90	601.0	-12.4	365.1	352.3	12.75	28.636		
2,400.0	2,360.2	2,324.9	2,200.2	7.9	13.0	28.30	643.3	-14.3	383.5	370.0	13.54	28.325		
2,500.0	2,456.3	2,423.2	2,288.9	8.4	13.9	28.67	685.6	-16.2	402.0	387.6	14.34	28.034		
2,600.0	2,552.4	2,521.4	2,377.5	9.0	14.7	29.00	727.9	-18.1	420.4	405.3	15.14	27.762		
2,700.0	2,648.5	2,619.7	2,466.2	9.5	15.5	29.31	770.3	-20.1	438.9	423.0	15.96	27.507		
2,800.0	2,744.5	2,717.9	2,554.8	10.1	16.3	29.59	812.6	-22.0	457.4	440.6	16.77	27.269		
2,900.0	2,840.6	2,816.2	2,643.5	10.6	17.1	29.85	854.9	-23.9	475.9	458.3	17.60	27.046		
3,000.0	2,936.7	2,914.4	2,732.1	11.2	18.0	30.09	897.2	-25.8	494.4	476.0	18.42	26.837		
3,100.0	3,032.8	3,012.7	2,820.8	11.7	18.8	30.31	939.5	-27.7	513.0	493.7	19.25	26.642		
3,200.0	3,128.9	3,110.9	2,909.4	12.3	19.6	30.52	981.8	-29.7	531.5	511.4	20.09	26.459		
3,300.0	3,224.9	3,209.2	2,998.1	12.8	20.4	30.71	1,024.1	-31.6	550.0	529.1	20.92	26.286		
3,400.0	3,321.0	3,307.4	3,086.8	13.4	21.3	30.89	1,066.4	-33.5	568.6	546.8	21.76	26.125		
3,500.0	3,417.1	3,405.7	3,175.4	14.0	22.1	31.06	1,108.7	-35.4	587.1	564.5	22.61	25.972		
3,600.0	3,513.2	3,503.9	3,264.1	14.5	22.9	31.22	1,151.0	-37.4	605.7	582.2	23.45	25.828		
3,700.0	3,609.2	3,602.2	3,352.7	15.1	23.7	31.37	1,193.4	-39.3	624.2	599.9	24.30	25.693		
3,800.0	3,705.3	3,700.4	3,441.4	15.6	24.5	31.51	1,235.7	-41.2	642.8	617.6	25.14	25.564		
3,900.0	3,801.4	3,798.7	3,530.0	16.2	25.4	31.64	1,278.0	-43.1	661.3	635.3	25.99	25.443		
4,000.0	3,897.5	3,896.9	3,618.7	16.8	26.2	31.77	1,320.3	-45.0	679.9	653.1	26.84	25.328		
4,100.0	3,993.6	3,995.2	3,707.3	17.3	27.0	31.89	1,362.6	-47.0	698.5	670.8	27.70	25.219		
4,200.0	4,089.6	4,093.4	3,796.0	17.9	27.8	32.00	1,404.9	-48.9	717.0	688.5	28.55	25.115		
4,300.0	4,185.7	4,191.7	3,884.6	18.4	28.7	32.11	1,447.2	-50.8	735.6	706.2	29.41	25.016		
4,400.0	4,281.8	4,289.9	3,973.3	19.0	29.5	32.21	1,489.5	-52.7	754.2	723.9	30.26	24.922		
4,500.0	4,377.9	4,388.2	4,061.9	19.6	30.3	32.31	1,531.8	-54.7	772.8	741.7	31.12	24.833		
4,528.8	4,405.5	4,416.5	4,087.5	19.7	30.5	32.33	1,544.0	-55.2	778.1	746.8	31.37	24.808		
4,600.0	4,474.2	4,486.3	4,150.5	20.1	31.1	32.52	1,574.1	-56.6	792.1	760.2	31.93	24.804		
4,700.0	4,571.3	4,583.8	4,238.5	20.5	31.9	32.69	1,616.1	-58.5	814.2	781.5	32.62	24.956		
4,800.0	4,669.3	4,680.6	4,325.8	20.8	32.8	32.76	1,657.8	-60.4	839.1	805.9	33.24	25.247		
4,900.0	4,767.8	4,776.6	4,412.4	21.1	33.6	32.76	1,699.1	-62.3	866.9	833.1	33.77	25.671		
5,000.0	4,866.9	4,871.5	4,498.1	21.4	34.4	32.68	1,740.0	-64.1	897.5	863.3	34.23	26.223		
5,100.0	4,966.4	4,965.5	4,582.8	21.6	35.1	32.55	1,780.4	-65.9	931.0	896.4	34.61	26.901		
5,200.0	5,066.2	5,058.2	4,666.5	21.8	35.9	32.37	1,820.3	-67.8	967.3	932.4	34.92	27.701		

Company:	BAYSWATER EXPLORATION & PRODUCTION	Local Co-ordinate Reference:	Well Booth 15-26
Project:	SEC.35-T7N-R65W	TVD Reference:	WELL @ 4844.0ft (Original Well Elev)
Reference Site:	Booth 15-26 Pad Sec.35-T7N-R65W	MD Reference:	WELL @ 4844.0ft (Original Well Elev)
Site Error:	0.0ft	North Reference:	True
Reference Well:	Booth 15-26	Survey Calculation Method:	Minimum Curvature
Well Error:	0.0ft	Output errors are at	2.00 sigma
Reference Wellbore	Wellbore #1	Database:	Landmark
Reference Design:	Plan #1 (8-17-11)	Offset TVD Reference:	Offset Datum

Reference Depths are relative to WELL @ 4844.0ft (Original Well Elev) Coordinates are relative to: Booth 15-26
Offset Depths are relative to Offset Datum
Central Meridian is -105.500000 °
Coordinate System is US State Plane 1983, Colorado Northern Zone
Grid Convergence at Surface is: 0.56°



Company:	BAYSWATER EXPLORATION & PRODUCTION	Local Co-ordinate Reference:	Well Booth 15-26
Project:	SEC.35-T7N-R65W	TVD Reference:	WELL @ 4844.0ft (Original Well Elev)
Reference Site:	Booth 15-26 Pad Sec.35-T7N-R65W	MD Reference:	WELL @ 4844.0ft (Original Well Elev)
Site Error:	0.0ft	North Reference:	True
Reference Well:	Booth 15-26	Survey Calculation Method:	Minimum Curvature
Well Error:	0.0ft	Output errors are at	2.00 sigma
Reference Wellbore	Wellbore #1	Database:	Landmark
Reference Design:	Plan #1 (8-17-11)	Offset TVD Reference:	Offset Datum

Reference Depths are relative to WELL @ 4844.0ft (Original Well Elev) Coordinates are relative to: Booth 15-26
 Offset Depths are relative to Offset Datum Coordinate System is US State Plane 1983, Colorado Northern Zone
 Central Meridian is -105.500000 ° Grid Convergence at Surface is: 0.56°

