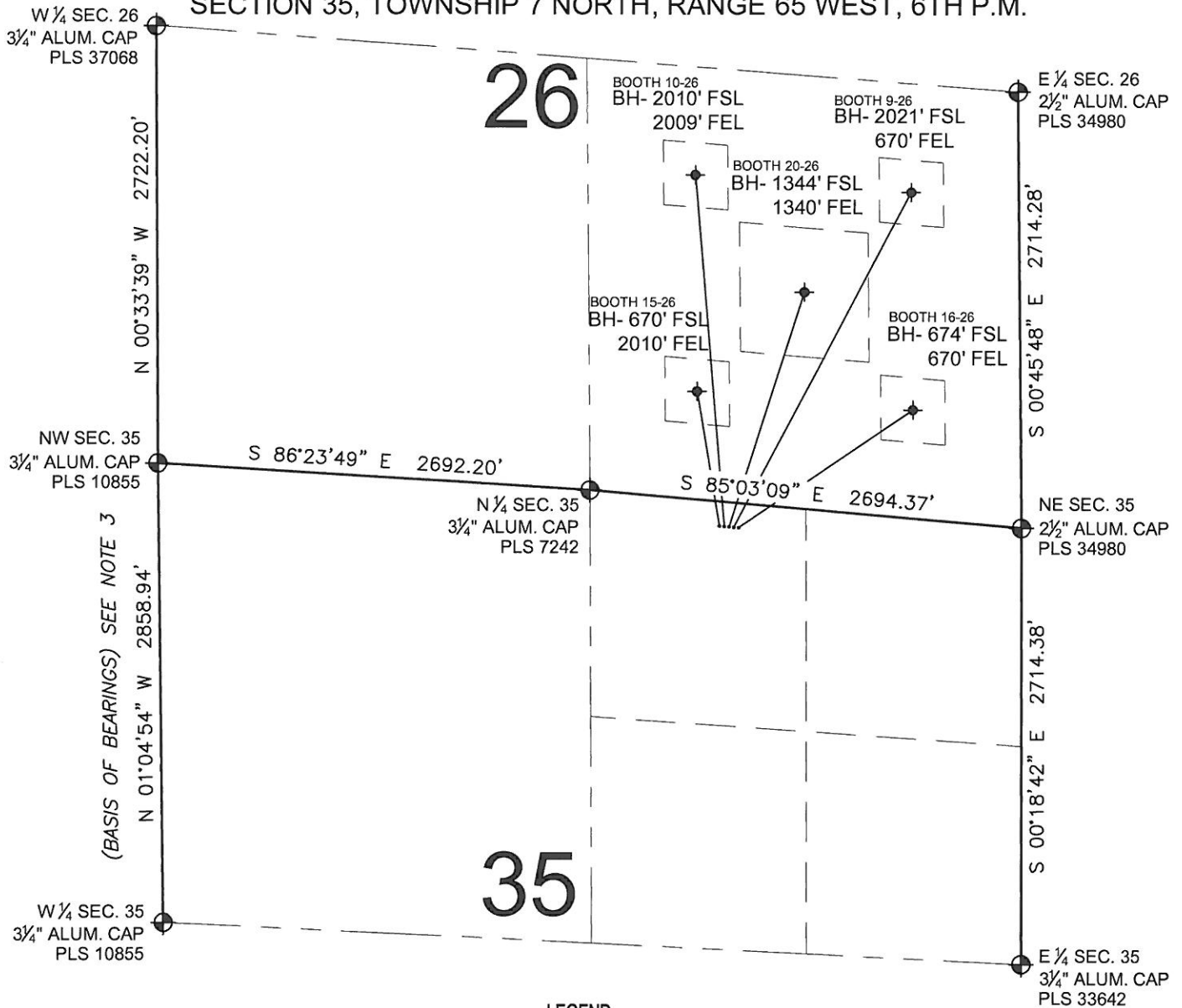


PAD DRAWING: BOOTH 5 PAD

SECTION 35, TOWNSHIP 7 NORTH, RANGE 65 WEST, 6TH P.M.



LEGEND

- = EXISTING MONUMENT
 = BOTTOM HOLE
 BH= BOTTOM HOLE
 = PROPOSED WELL
 = EXISTING WELL

NOTES:

- THIS FIELD SURVEY CONFORMS TO THE MINIMUM STANDARDS SET BY THE C.O.G.C.C., RULE NO. 215
- HORIZONTAL POSITIONS AND ORTHOMETRIC ELEVATIONS SHOWN AT THE WELL HEAD, ARE BASED ON GPS-RTK POSITIONS DERIVED FROM MINIMUM 2-HOUR STATIC OBSERVATIONS CORRECTED BY THE NATIONAL GEODETIC SURVEY ONLINE POSITIONING USER SERVICE, O.P.U.S. DATUM: HORIZONTAL = NAD83/2007, VERTICAL = NAVD88
- THE BASIS OF BEARINGS ARE STATE PLANE COORDINATE SYSTEM GRID BEARINGS SHOWN HEREON BETWEEN THE DESCRIBED THE MONUMENTS SHOWN HEREON.
- GRID DISTANCES ARE SHOWN, AS MEASURED IN THE FIELD, WITH TIES TO WELLS MEASURED PERPENDICULAR TO SECTION LINES.

NOTES:

BOOTH 16-26 TO BE AT 151' FNL, 1788' FEL.
 BOTTOM HOLE AT 674' FSL & 670' FEL.
 BOOTH 9-26 TO BE AT 151' FNL, 1803' FEL.
 BOTTOM HOLE AT 2021' FSL & 670' FEL.
 BOOTH 20-26 TO BE AT 151' FNL, 1818' FEL.
 BOTTOM HOLE AT 1344' FSL & 1340' FEL.
 BOOTH 10-26 TO BE AT 151' FNL, 1833' FEL.
 BOTTOM HOLE AT 2010' FSL & 2009' FEL.
 BOOTH 15-26 TO BE AT 151' FNL, 1848' FEL.
 BOTTOM HOLE AT 670' FSL & 2010' FEL.

PREPARED BY:

PFS



Petroleum Field Services, LLC
1801 W. 13th Ave.
Denver, CO 80204

BAYSWATER EXPLORATION & PRODUCTION, LLC

FIELD DATE:
07-07-11

PAD NAME:
BOOTH 5 PAD

DRAWING DATE:
07-19-11

SURFACE LOCATION:

BY:
EFW

WELD COUNTY, COLORADO
NW ¼ NE ¼, SEC. 35, T7N, R65W

