

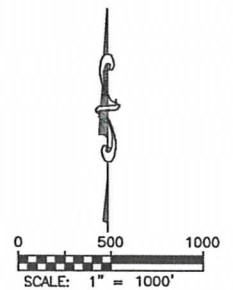
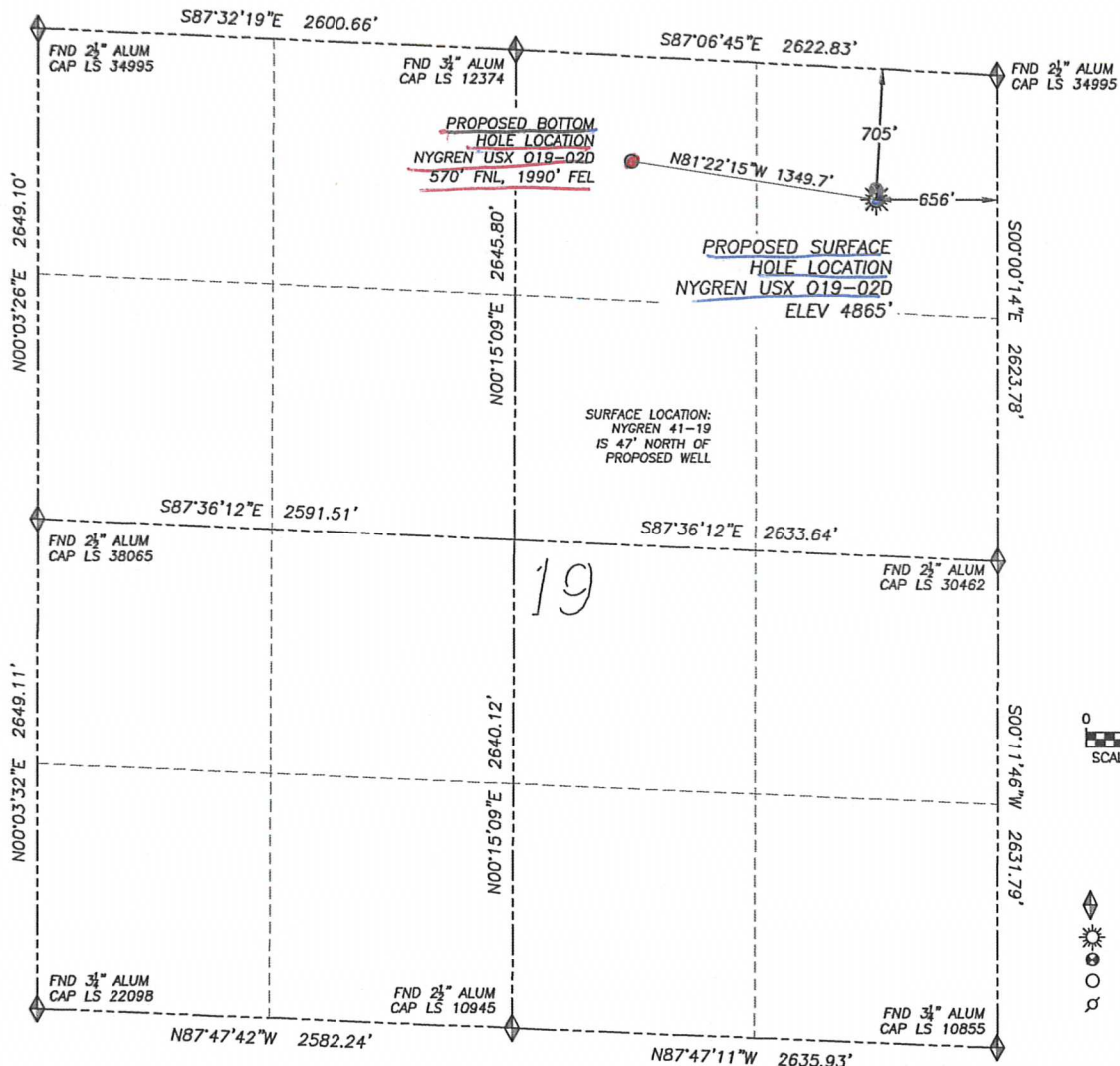
DALEY LAND SURVEYING, INC.

PARKER, CO. 80134

303 953 9841

MULTI-WELL PAD DIRECTIONAL LAYOUT NYGREN USX 019-02D

SECTION 19, TOWNSHIP 4 NORTH, RANGE 67 WEST OF THE 6TH PRINCIPAL MERIDIAN



LEGEND

- FOUND MONUMENT AS DESCRIBED
- PROPOSED WELL
- EXISTING WELL
- BOTTOM HOLE
- ABANDONED WELL

NAD 83 LATITUDE AND LONGITUDE

NYGREN USX 019-02D SURFACE HOLE:

LATITUDE: N40.30405°

LONGITUDE: W104.92537°

ELEVATION: 4865'

FOOTAGE: 705' FNL, 656' FEL

PDOP: 1.2

QTR/QTR: NE4/NE4

PROP LINE: 626'± EAST

BOTTOM HOLE:

LATITUDE: N40.30460°

LONGITUDE: W104.93015°

FOOTAGE: 570' FNL, 1990' FEL

NEAREST EXISTING WELL:

NYGREN 41-19 SURFACE HOLE

LATITUDE: N40.30417°

LONGITUDE: W104.92537°

ELEVATION: 4858'

47' NORTH

SECTION 19, TOWNSHIP 4 NORTH, RANGE 67 WEST OF THE 6TH PRINCIPAL MERIDIAN

