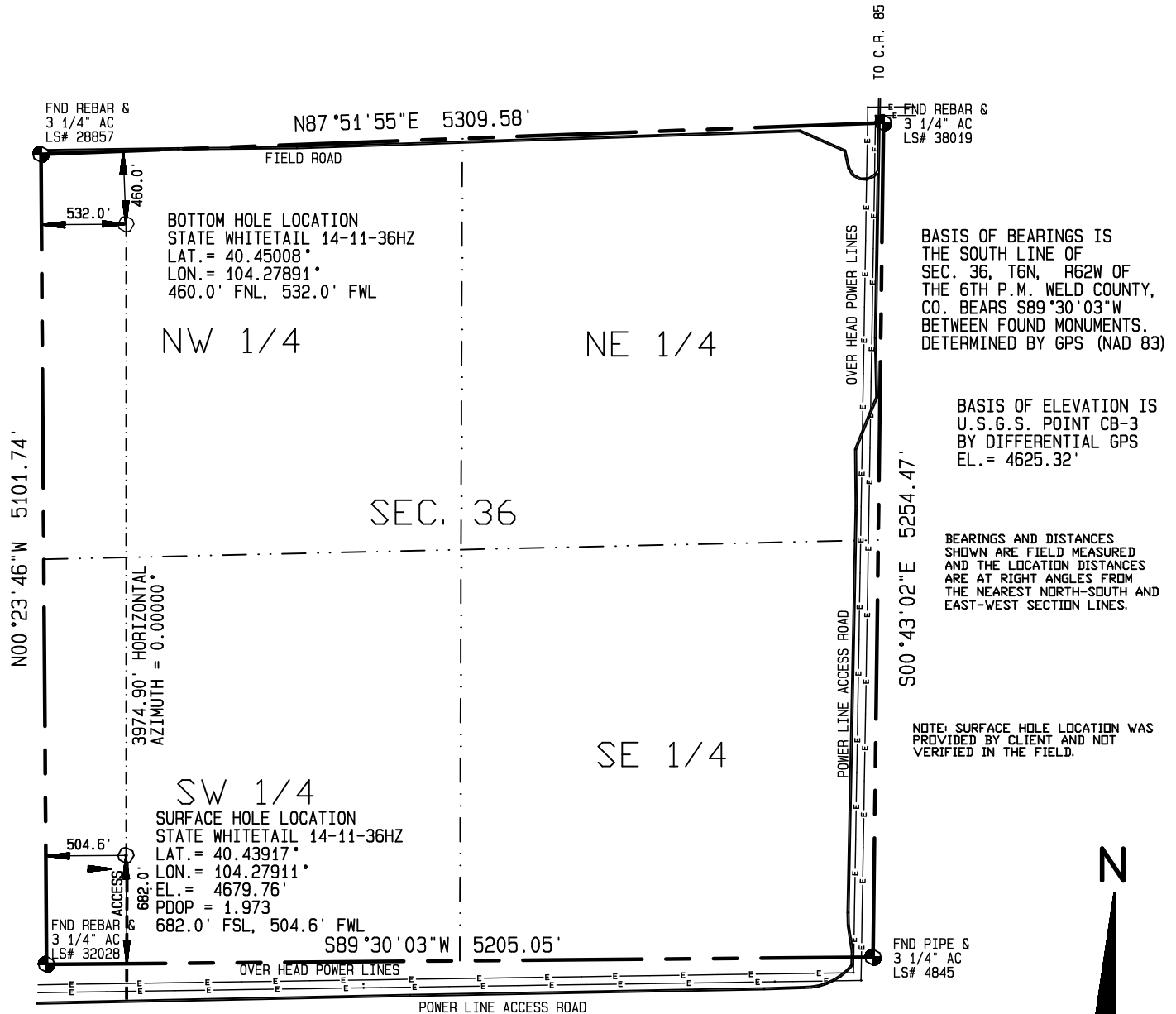
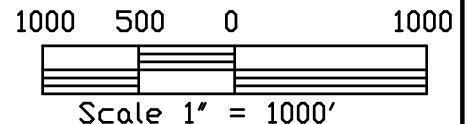


Visible improvements within 400 feet of the location include:
NONE



I HEREBY CERTIFY THAT THIS PLAT IS
AN ACCURATE REPRESENTATION OF A
CORRECT SURVEY SHOWING THE
LOCATION OF SAID WELLSITE:



Dan Griggs PLS# 38018

CONTRACT SURVEYORS, LTD.
COMPLETE SURVEYING AND GLOBAL POSITIONING

2133 SOUTH BELLAIRE STREET #14
DENVER COLORADO 80222
(303) 756-3695



DATE OF FIELD WORK:

AUGUST 16, 2011

DATE OF DRAWING:

AUGUST 18, 2011

STATE WHITETAIL 14-11-36HZ

SW 1/4 SW 1/4 SEC. 36, T6N, R62W

BONANZA CREEK ENERGY OPERATING COMPANY, LLC

WELD COUNTY, COLORADO

CSL# 11104-42