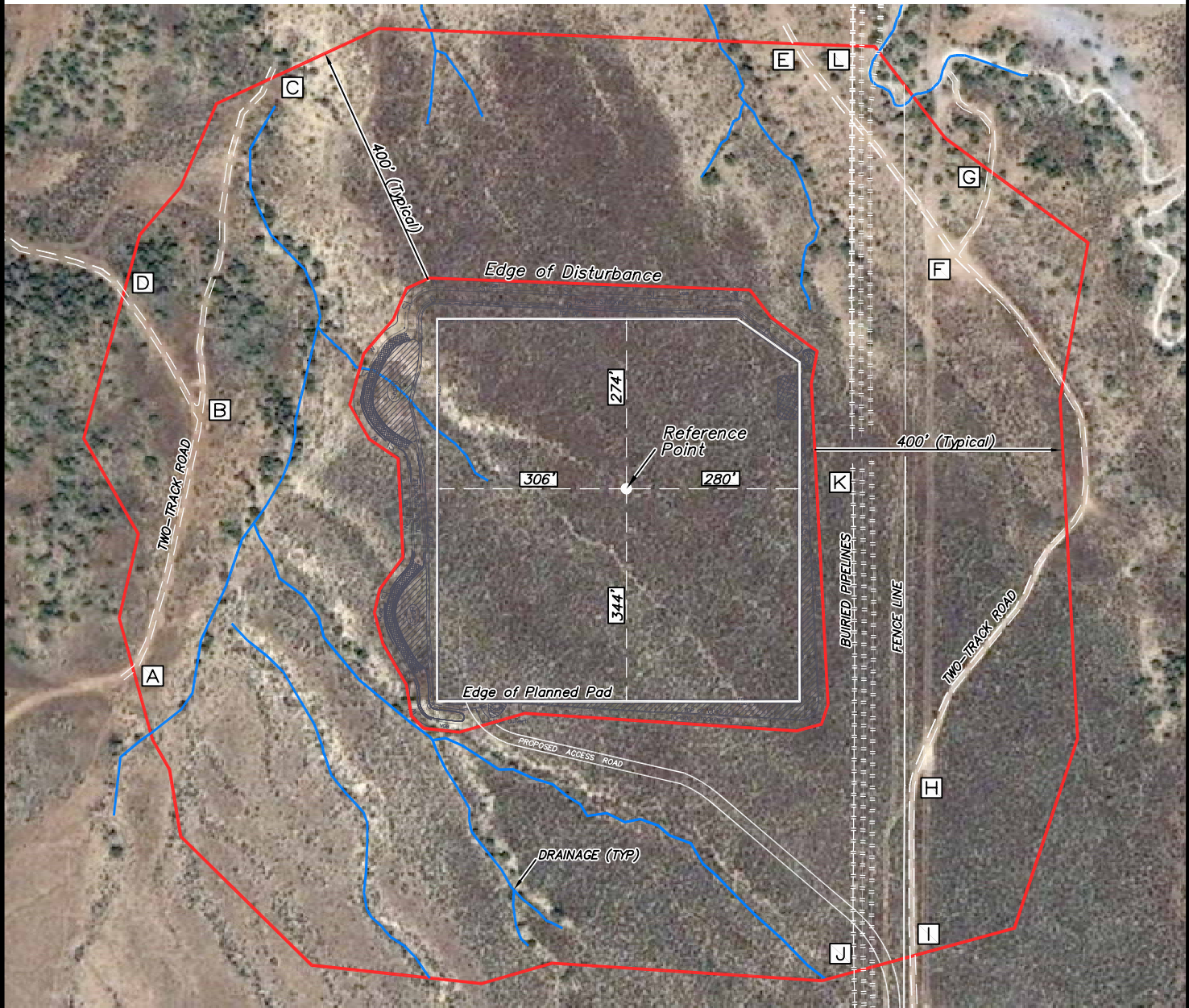


# Location Drawing



## Tie to Nearest:

Building 17,060' westerly  
Public Road 2850' south  
Property Line 450' east  
Above Ground Utility 2800' northwest  
Railroad 15,800' northwesterly

## Reference Point Data:

Latitude: N 39.323630°  
Longitude: W 108.124497°  
FNL: 1528'  
FEL: 450'  
PDOP: 2.2  
ELEV: 5614.5'  
Field observations taken on  
3/23/11 by operator Jason Hergert.

## Distances listed below are measured from the Reference Point

[A] two-track road 850' southwest	[G] two-track road 780' northeast
[B] two-track road 702' northwest	[H] two-track road 666' southeast
[C] two-track road 877' northwest	[I] two-track road 886' southeast
[D] two-track road 871' northwest	[J] buried pipelines 864' southeast
[E] two-track road 769' northeast	[K] buried pipelines 368' east
[F] two-track road 649' northeast	[L] buried pipelines 801' northeast



SCALE 1" = 250'

**EnCana Oil & Gas (USA) Inc.**  
**H29OU Pad Location Drawing**  
**Improvements extending**  
**400' from disturbance**

E1/2 NE1/4, SECTION 29

T8S, R96W, 6th P.M.

MESA COUNTY, COLORADO

Project No. 10-04-68 Date: August 18, 2011



906 Main Street  
Evanston, Wyoming 82930  
Phone No. (307) 789-4545