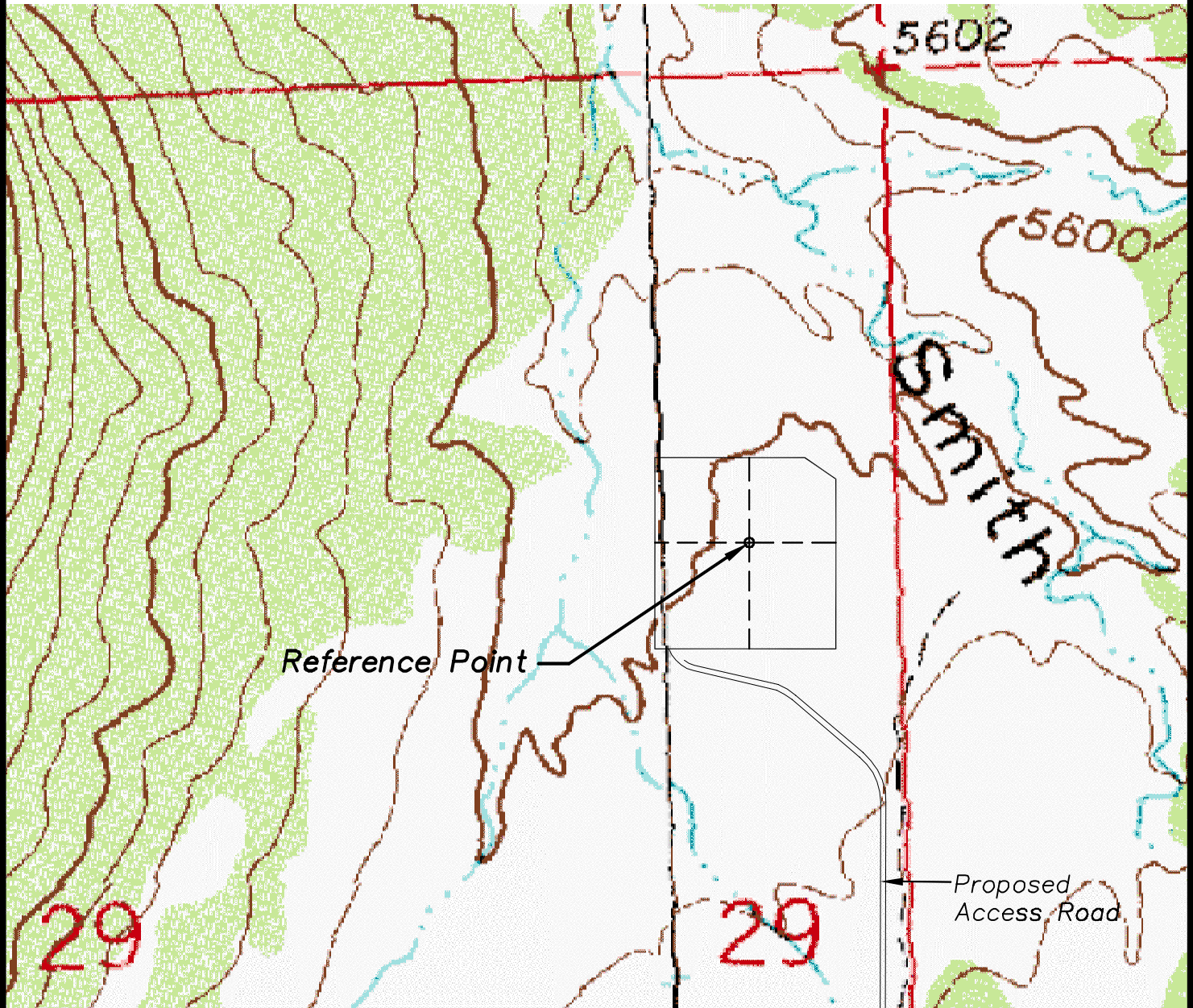


Reference Area Map



Note:
Photos taken at reference
point on September 14, 2010.

Reference Point Data:
Latitude: N 39.323630°
Longitude: W 108.124497°
FNL: 1528'
FEL: 450'
PDOP: 2.2
ELEV: 5614.5'
Field observations taken on
3/23/11 by operator Jason Hergert.



SCALE 1" = 500'

EnCana Oil & Gas (USA) Inc.
H29OU Pad Location Drawing
Reference Area Map

E1/2 NE1/4, SECTION 29

T8S, R96W, 6th P.M.

MESA COUNTY, COLORADO

Project No. 10-04-68 Date: August 18, 2011



906 Main Street
Evanston, Wyoming 82930
Phone No. (307) 789-4545