

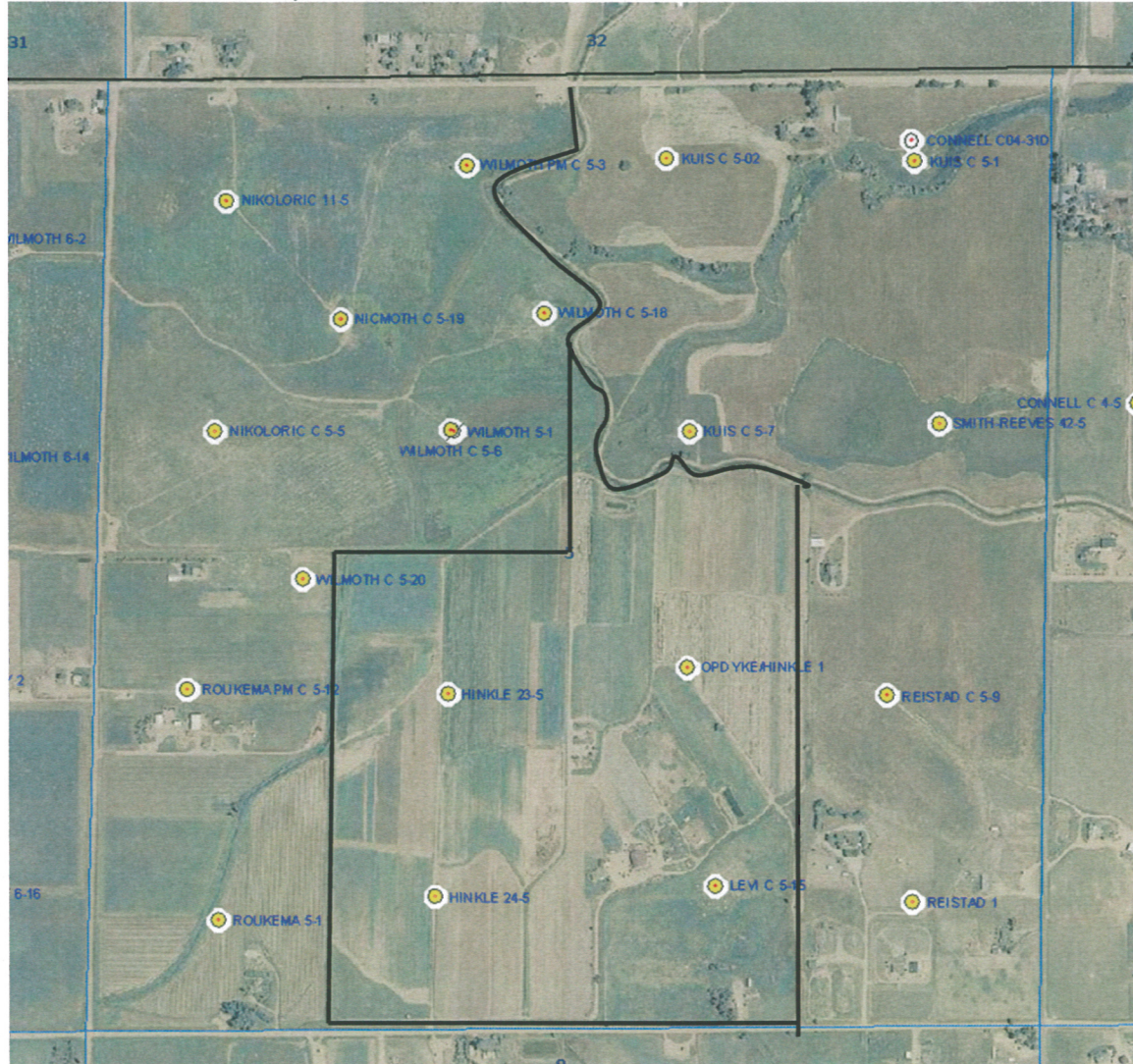
## LEASE DESCRIPTION FOR APD

Wells: Burman C05-24D

Location: Township 4 North, Range 64 West, 6<sup>th</sup> P.M.  
Sec. 5: NE/4SE/4 (surface location for all wells)

Description: Township 4 North, Range 64 West, 6<sup>th</sup> P.M.  
Sec. 5: E/2SW/4, W/2SE/4 and that portion of the SW/4NE/4 lying South and West of  
the Gilmore Canal.  
containing 176.00 acres, more or less in Weld County, CO.

Source: COGCC website aerial photos 8/15/2011.



- Black outline is approximation of leased area.
- Blue lines are section lines.
- Map is approximate, not to scale and for illustration purposes only.