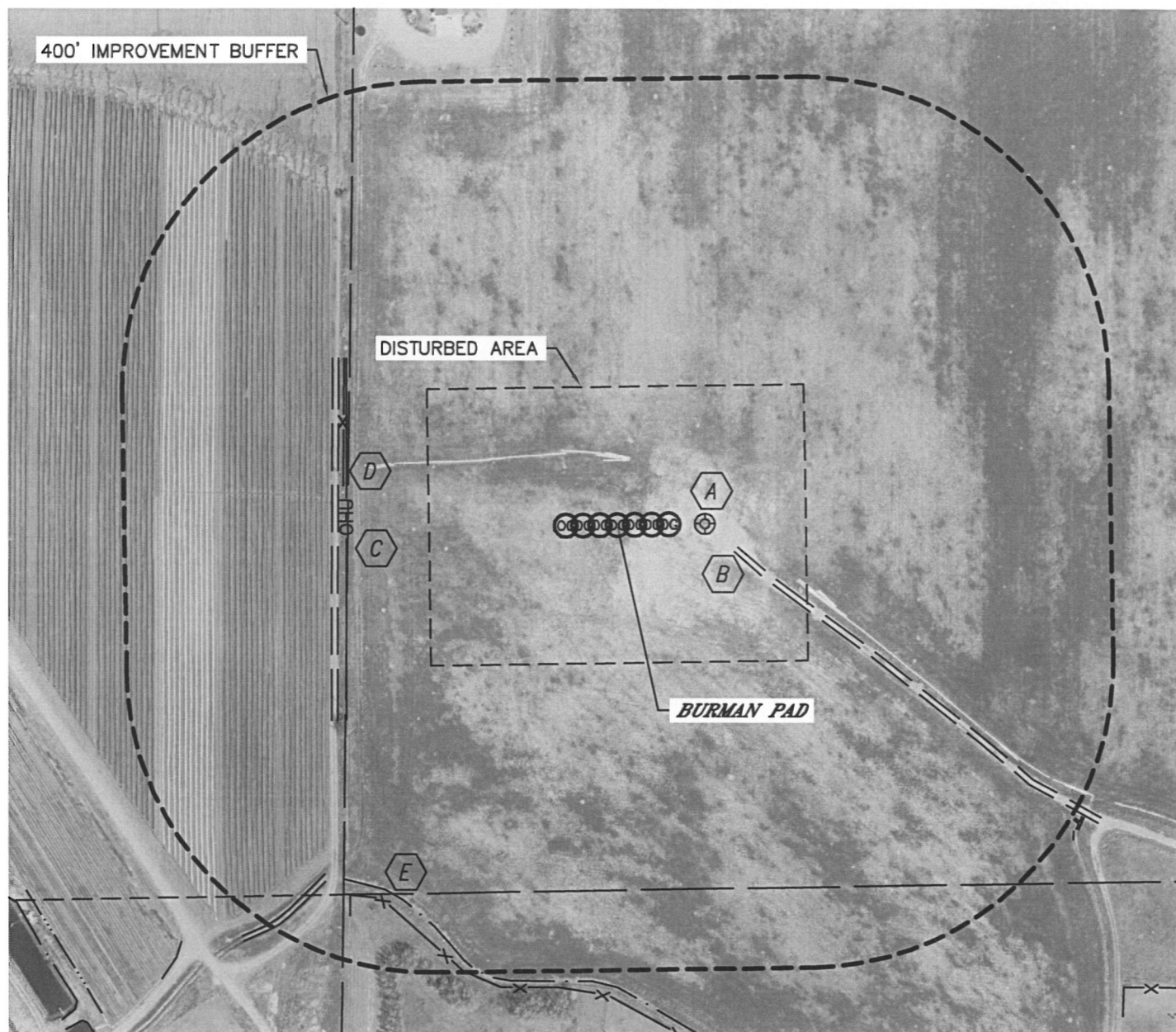


LOCATION DRAWING

BURMAN C04-33D, 32D, C05-17D, 22D, 23D, 21D, 24D

SECTION: 5
TOWNSHIP: 4N
RANGE: 64W



IMPROVEMENTS:
(MEASURED FROM THE BURMAN C05-22D LOCATION)

- A** EX. WELL 115' E
- B** FIELD ROAD 157' SE, 367' W
- C** OVERHEAD UTILITY 356' W
- D** FENCE 364' NW, 577' SW
- E** DITCH 564', 596', 603' SW

NEAREST: BUILDING 694' NW, PUBLIC ROAD 953' E (CR 53),
ABOVE GROUND UTILITY 356' W, RAILROAD 5280'+, PROPERTY LINE 354' W

