

WILLIAMS PRODUCTION RMT COMPANY

PLAT #2 LOCATION LAYOUT FOR GR 23-11V
SECTION 11, T7S, R96W, 6th P.M.

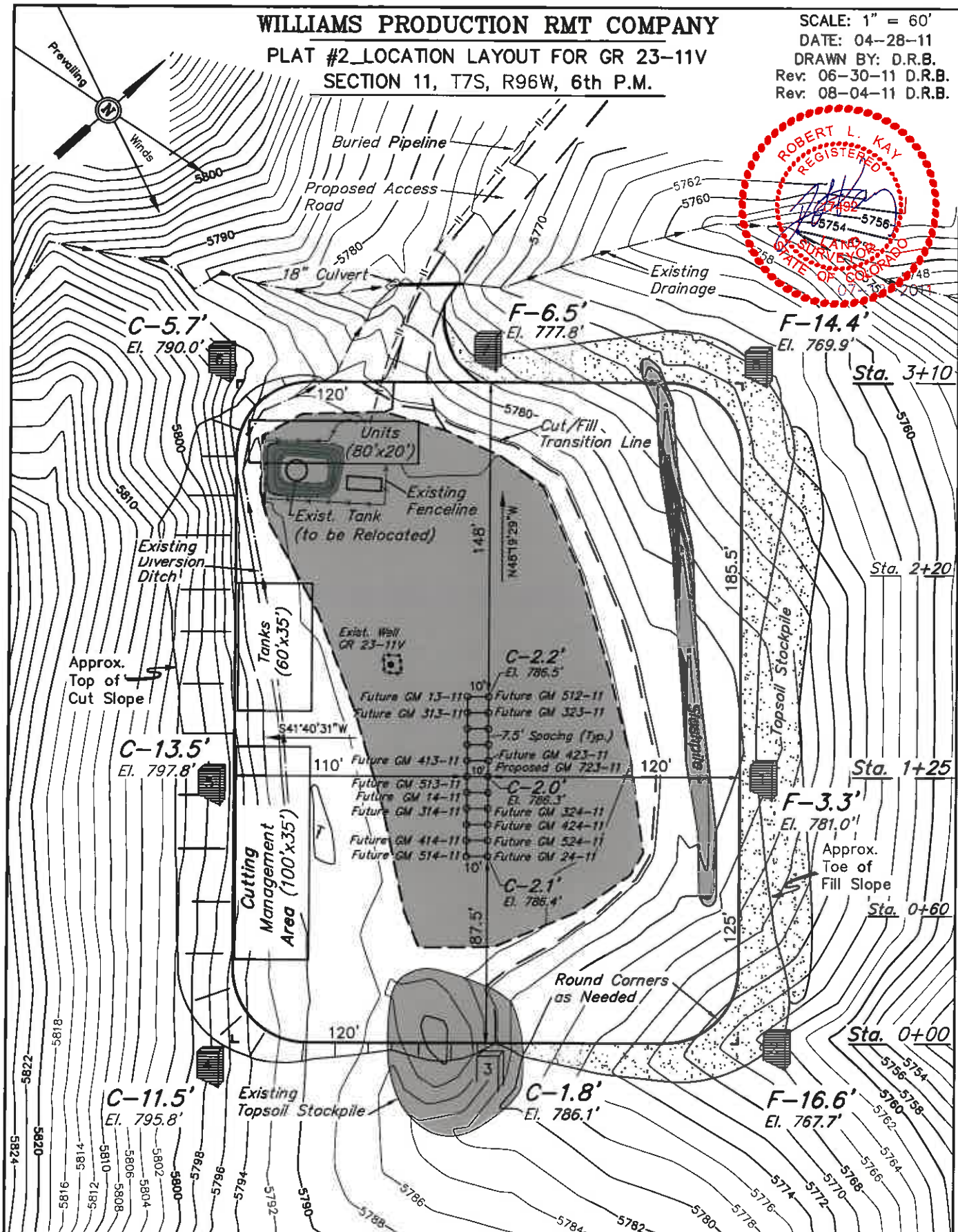
SCALE: 1" = 60'

DATE: 04-28-11

DRAWN BY: D.R.B.

Rev. 06-30-11 D.R.B.

Rev. 08-04-11 D.R.B.



Elev. Ungraded Ground At 723-11 Loc. Stake = 5786.3'
FINISHED GRADE ELEV. AT 723-11 LOC. STAKE = 5784.3'

UINTAH ENGINEERING & LAND SURVEYING
85 So. 200 East • Vernal, Utah 84078 • (435) 788-1017

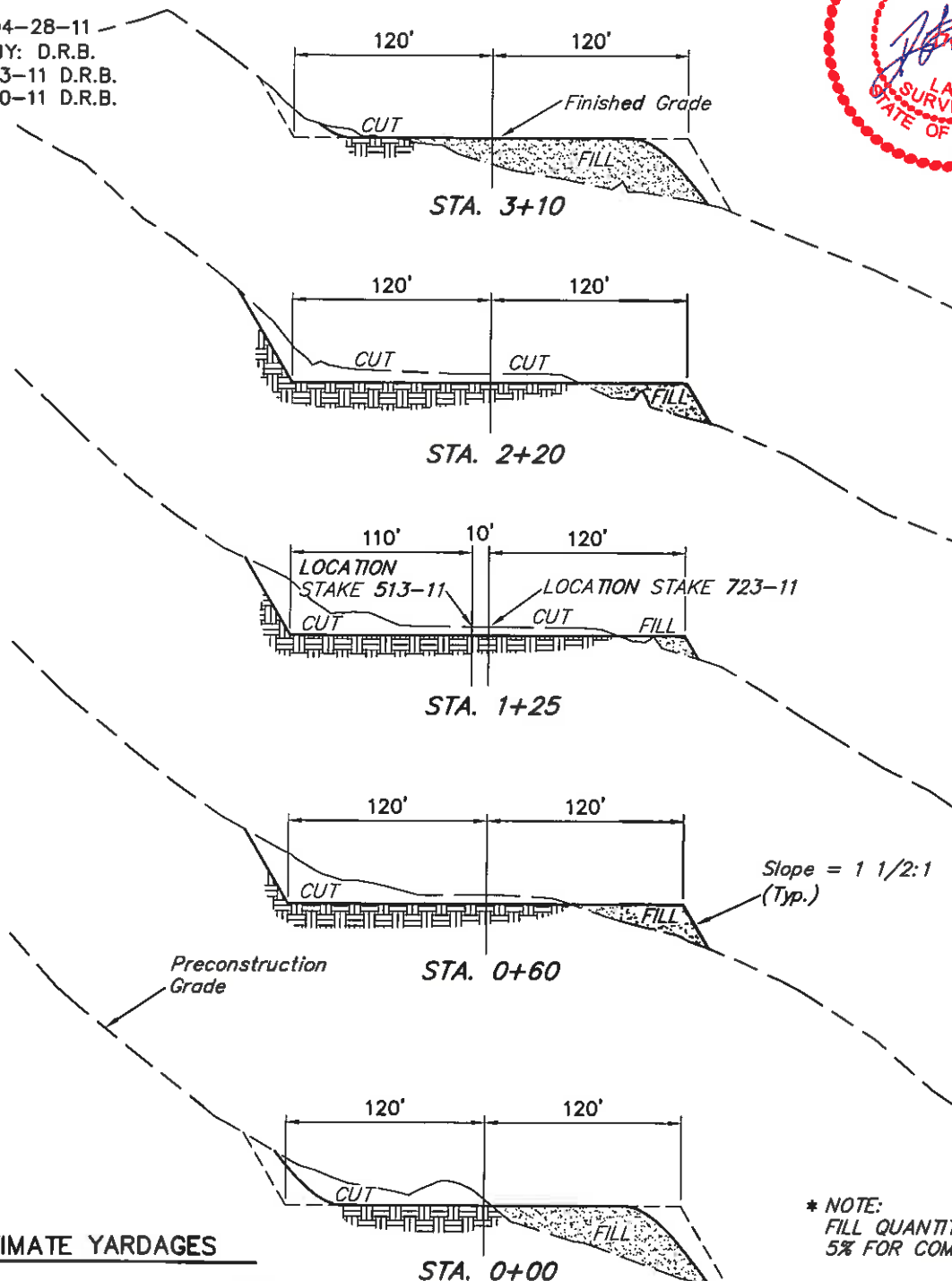
WILLIAMS PRODUCTION RMT COMPANY

PLAT #3_TYPICAL CROSS SECTION FOR GR 23-11V
SECTION 11, T7S, R96W, 6th P.M.



1" = 40'
X-Section
Scale
1" = 100'

DATE: 04-28-11
DRAWN BY: D.R.B.
Rev: 05-03-11 D.R.B.
Rev: 06-30-11 D.R.B.



* NOTE:
FILL QUANTITY INCLUDES
5% FOR COMPACTION

APPROXIMATE YARDAGES

(6") Topsoil Stripping = 1,170 Cu. Yds.

(New Construction Only)

Remaining Location = 6,990 Cu. Yds.

TOTAL CUT = 8,160 CU.YDS.

FILL = 6,990 CU.YDS.

EXCESS MATERIAL = 1,170 Cu. Yds.

Topsoil = 1,170 Cu. Yds.

EXCESS UNBALANCE = 0 Cu. Yds.

(After Interim Rehabilitation)

UINTAH ENGINEERING & LAND SURVEYING
85 So. 200 East * Vernal, Utah 84078 * (435) 789-1017