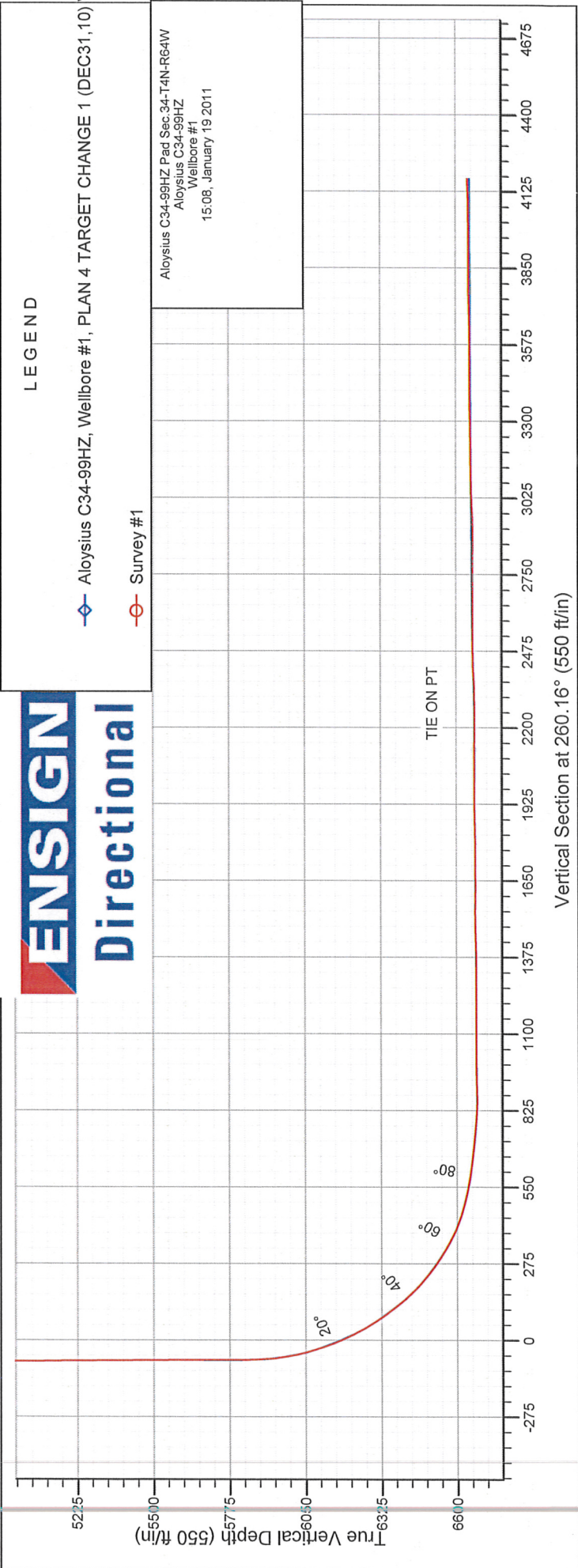
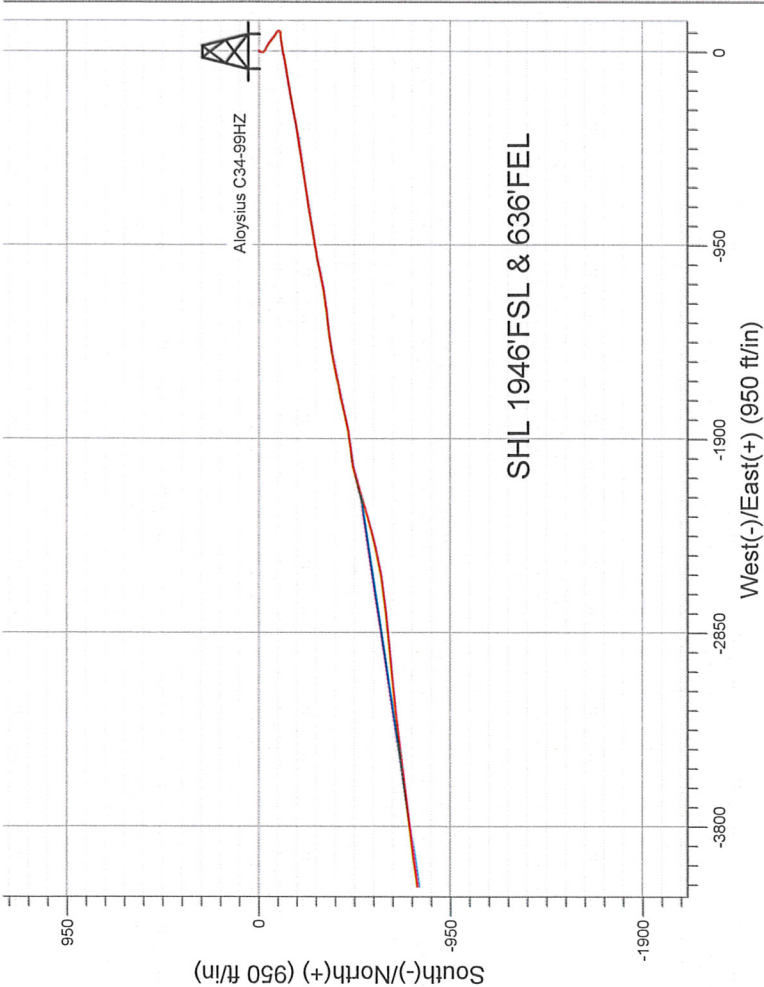


NOBLE ENERGY INC WELD COUNTY CO

Well Name: Aloysius C34-99HZ				
Surface Location: Aloysius C34-99HZ Pad Sec.34-T4N-R64W				
North American Datum 1983 , US State Plane 1983 , Colorado Northern Zone				
Ground Elevation: 4692.0				
+N/-S	+E/-W	Northing	Easting	Slot
0.0	0.0	1341626.73	3270704.36	
		Latitude	Longitude	
		40.267100	-104.529910	
		Ensign 136 KB 13' RKB @ 4705.0ft (Ensign 136 KB 13')		

FINAL SURVEY

Projected Bottom Hole Location
10570' MD 6644' TVD 791' S & 4095 'W of
SHL
92.5 degree Incl @ 260.8 degree AZM



Company: NOBLE ENERGY INC WELD COUNTY CO
Project: SEC.34-T4N-R64W
Site: Aloysius C34-99HZ Pad Sec.34-T4N-R64W
Well: Aloysius C34-99HZ
Wellbore: Wellbore #1
Design: Wellbore #1

Local Co-ordinate Reference: Site Aloysius C34-99HZ Pad Sec.34-T4N-R64W
TVD Reference: RKB @ 4705.0ft (Ensign 136 KB 13')
MD Reference: RKB @ 4705.0ft (Ensign 136 KB 13')
North Reference: True
Survey Calculation Method: Minimum Curvature
Database: Landmark

Project	SEC.34-T4N-R64W, Weld County, Colorado		
Map System:	US State Plane 1983	System Datum:	Mean Sea Level
Geo Datum:	North American Datum 1983		
Map Zone:	Colorado Northern Zone		Using geodetic scale factor

Site Aloysius C34-99HZ Pad Sec.34-T4N-R64W

Site Position:		Northing:	1,341,626.74 ft	Latitude:	40.267100
From:	Lat/Long	Easting:	3,270,704.36 ft	Longitude:	-104.529910
Position Uncertainty:	0.0 ft	Slot Radius:	"	Grid Convergence:	0.63 °

Well	Aloysius C34-99HZ				
Well Position	+N/-S	0.0 ft	Northing:	1,341,626.73 ft	Latitude: 40.267100
	+E/-W	0.0 ft	Easting:	3,270,704.36 ft	Longitude: -104.529910
Position Uncertainty		0.0 ft	Wellhead Elevation:	ft	Ground Level: 4,692.0 ft

Wellbore Wellbore #1

Magnetics	Model Name	Sample Date	Declination (°)	Dip Angle (°)	Field Strength (nT)
	IGRF200510	12/14/2010	8.75	67.01	53,162

Design Wellbore #1

Audit Notes:

Version: 1.0 **Phase:** ACTUAL **Tie On Depth:** 0.0

Vertical Section:	Depth From (TVD) (ft)	+N/-S (ft)	+E/-W (ft)	Direction (°)
	0.0	0.0	0.0	260.16

Survey Program Date 1/19/2011

From (ft)	To (ft)	Survey (Wellbore)	Tool Name	Description
685.0	10,570.0	Survey #1 (Wellbore #1)	MWD	MWD - Standard

Survey

Measured Depth (ft)	Inclination (°)	Azimuth (°)	Vertical Depth (ft)	+N/-S (ft)	+E/-W (ft)	Vertical Section (ft)	Dogleg Rate (°/100ft)	Build Rate (°/100ft)	Turn Rate (°/100ft)
0.0	0.00	0.00	0.0	0.0	0.0	0.0	0.00	0.00	0.00
28.5	0.05	215.50	28.5	0.0	0.0	0.0	0.19	0.19	0.00
Hardline TD									
685.0	1.30	215.50	684.9	-6.3	-4.5	5.5	0.19	0.19	0.00
812.0	1.60	198.30	811.9	-9.2	-5.9	7.4	0.41	0.24	-13.54
940.0	1.30	194.00	939.9	-12.3	-6.8	8.8	0.25	-0.23	-3.36
1,068.0	1.30	194.50	1,067.8	-15.1	-7.5	10.0	0.01	0.00	0.39
1,195.0	1.10	192.70	1,194.8	-17.7	-8.2	11.1	0.16	-0.16	-1.42
1,324.0	1.10	164.70	1,323.8	-20.1	-8.1	11.4	0.41	0.00	-21.71
1,450.0	1.10	149.50	1,449.8	-22.3	-7.2	10.9	0.23	0.00	-12.06
1,577.0	0.90	122.20	1,576.7	-23.9	-5.7	9.7	0.40	-0.16	-21.50
1,705.0	0.80	140.70	1,704.7	-25.1	-4.3	8.5	0.23	-0.08	14.45
1,834.0	0.70	132.40	1,833.7	-26.3	-3.1	7.6	0.11	-0.08	-6.43

Company: NOBLE ENERGY INC WELD COUNTY CO
Project: SEC.34-T4N-R64W
Site: Aloysius C34-99HZ Pad Sec.34-T4N-R64W
Well: Aloysius C34-99HZ
Wellbore: Wellbore #1
Design: Wellbore #1

Local Co-ordinate Reference: Site Aloysius C34-99HZ Pad Sec.34-T4N-R64W
TVD Reference: RKB @ 4705.0ft (Ensign 136 KB 13')
MD Reference: RKB @ 4705.0ft (Ensign 136 KB 13')
North Reference: True
Survey Calculation Method: Minimum Curvature
Database: Landmark

Survey

Measured Depth (ft)	Inclination (°)	Azimuth (°)	Vertical Depth (ft)	+N/-S (ft)	+E/-W (ft)	Vertical Section (ft)	Dogleg Rate (°/100ft)	Build Rate (°/100ft)	Turn Rate (°/100ft)
1,962.0	0.40	150.30	1,961.7	-27.3	-2.3	7.0	0.27	-0.23	13.98
2,090.0	1.10	141.60	2,089.7	-28.6	-1.4	6.2	0.55	0.55	-6.80
2,219.0	2.30	132.90	2,218.6	-31.3	1.3	4.1	0.95	0.93	-6.74
2,347.0	3.10	116.30	2,346.5	-34.6	6.3	-0.3	0.87	0.63	-12.97
2,475.0	3.60	106.50	2,474.3	-37.3	13.2	-6.7	0.59	0.39	-7.66
2,603.0	4.30	124.20	2,602.0	-41.1	21.1	-13.7	1.09	0.55	13.83
2,732.0	4.20	125.60	2,730.6	-46.6	28.9	-20.5	0.11	-0.08	1.09
2,860.0	4.20	125.30	2,858.3	-52.0	36.5	-27.1	0.02	0.00	-0.23
2,989.0	4.00	126.00	2,986.9	-57.4	44.0	-33.6	0.16	-0.16	0.54
3,117.0	3.40	121.80	3,114.7	-62.0	50.9	-39.5	0.51	-0.47	-3.28
3,246.0	2.90	129.50	3,243.5	-66.1	56.6	-44.5	0.51	-0.39	5.97
3,374.0	2.90	134.30	3,371.3	-70.5	61.5	-48.5	0.19	0.00	3.75
3,502.0	3.10	123.70	3,499.1	-74.6	66.7	-52.9	0.46	0.16	-8.28
3,630.0	2.90	125.20	3,627.0	-78.4	72.2	-57.7	0.17	-0.16	1.17
3,759.0	3.50	124.90	3,755.8	-82.6	78.1	-62.8	0.47	0.47	-0.23
3,887.0	2.90	123.60	3,883.6	-86.6	84.0	-68.0	0.47	-0.47	-1.02
4,016.0	2.50	121.80	4,012.4	-89.9	89.1	-72.4	0.32	-0.31	-1.40
4,146.0	2.20	134.30	4,142.3	-93.1	93.3	-76.0	0.46	-0.23	9.62
4,273.0	1.70	144.80	4,269.2	-96.4	96.1	-78.2	0.48	-0.39	8.27
4,401.0	1.10	161.80	4,397.2	-99.1	97.6	-79.2	0.57	-0.47	13.28
4,529.0	0.70	187.50	4,525.2	-101.0	97.9	-79.2	0.44	-0.31	20.08
4,658.0	0.70	248.60	4,654.2	-102.1	97.0	-78.2	0.55	0.00	47.36
4,786.0	0.50	200.40	4,782.2	-102.9	96.1	-77.1	0.41	-0.16	-37.66
4,915.0	0.60	212.90	4,911.2	-104.0	95.6	-76.4	0.12	0.08	9.69
5,043.0	0.60	226.90	5,039.2	-105.0	94.7	-75.4	0.11	0.00	10.94
5,171.0	0.70	238.90	5,167.2	-105.9	93.5	-74.1	0.13	0.08	9.38
5,300.0	0.50	256.10	5,296.1	-106.4	92.3	-72.8	0.21	-0.16	13.33
5,428.0	0.20	257.00	5,424.1	-106.6	91.6	-72.0	0.23	-0.23	0.70
5,557.0	0.40	216.60	5,553.1	-107.0	91.1	-71.5	0.22	0.16	-31.32
5,685.0	0.30	169.30	5,681.1	-107.7	90.9	-71.1	0.23	-0.08	-36.95
5,735.0	0.10	122.50	5,731.1	-107.8	90.9	-71.2	0.49	-0.40	-93.60
5,778.0	0.20	229.70	5,774.1	-107.9	90.9	-71.1	0.58	0.23	249.30
5,821.0	0.40	244.00	5,817.1	-108.0	90.7	-70.9	0.49	0.47	33.26
5,842.0	1.20	265.00	5,838.1	-108.1	90.4	-70.6	3.99	3.81	100.00
5,864.0	1.90	267.60	5,860.1	-108.1	89.8	-70.0	3.20	3.18	11.82
5,885.0	2.80	271.50	5,881.1	-108.1	89.0	-69.2	4.35	4.29	18.57
5,907.0	4.10	273.80	5,903.1	-108.1	87.7	-67.9	5.94	5.91	10.45
5,928.0	5.50	274.40	5,924.0	-107.9	85.9	-66.2	6.67	6.67	2.86
5,949.0	6.80	272.40	5,944.9	-107.8	83.7	-64.0	6.27	6.19	-9.52
5,970.0	8.20	271.30	5,965.7	-107.7	80.9	-61.3	6.70	6.67	-5.24
5,992.0	9.50	268.90	5,987.4	-107.7	77.5	-58.0	6.14	5.91	-10.91
6,013.0	11.20	265.10	6,008.1	-107.9	73.8	-54.3	8.72	8.10	-18.10
6,035.0	12.90	263.90	6,029.6	-108.4	69.2	-49.7	7.81	7.73	-5.45
6,056.0	14.80	262.10	6,050.0	-109.0	64.2	-44.7	9.28	9.05	-8.57
6,078.0	16.70	262.00	6,071.2	-109.8	58.3	-38.7	8.64	8.64	-0.45
6,099.0	18.10	261.30	6,091.2	-110.7	52.1	-32.4	6.74	6.67	-3.33
6,120.0	19.40	262.10	6,111.1	-111.7	45.4	-25.7	6.31	6.19	3.81
6,141.0	20.30	260.70	6,130.8	-112.8	38.4	-18.5	4.85	4.29	-6.67
6,163.0	21.10	260.70	6,151.4	-114.0	30.7	-10.8	3.64	3.64	0.00
6,184.0	21.80	260.00	6,171.0	-115.3	23.1	-3.1	3.55	3.33	-3.33
6,206.0	23.60	260.80	6,191.3	-116.7	14.7	5.4	8.30	8.18	3.64
6,227.0	25.50	259.40	6,210.4	-118.2	6.1	14.1	9.46	9.05	-6.67
6,249.0	26.80	258.70	6,230.1	-120.1	-3.4	23.8	6.07	5.91	-3.18
6,270.0	28.30	257.70	6,248.7	-122.1	-12.9	33.5	7.47	7.14	-4.76

Company: NOBLE ENERGY INC WELD COUNTY CO
Project: SEC.34-T4N-R64W
Site: Aloysius C34-99HZ Pad Sec.34-T4N-R64W
Well: Aloysius C34-99HZ
Wellbore: Wellbore #1
Design: Wellbore #1

Local Co-ordinate Reference: Site Aloysius C34-99HZ Pad Sec.34-T4N-R64W
TVD Reference: RKB @ 4705.0ft (Ensign 136 KB 13')
MD Reference: RKB @ 4705.0ft (Ensign 136 KB 13')
North Reference: True
Survey Calculation Method: Minimum Curvature
Database: Landmark

Survey

Measured Depth (ft)	Inclination (°)	Azimuth (°)	Vertical Depth (ft)	+N/-S (ft)	+E/-W (ft)	Vertical Section (ft)	Dogleg Rate (°/100ft)	Build Rate (°/100ft)	Turn Rate (°/100ft)
6,292.0	29.70	257.70	6,268.0	-124.3	-23.3	44.2	6.36	6.36	0.00
6,313.0	32.00	257.80	6,286.0	-126.6	-33.8	55.0	10.96	10.95	0.48
6,335.0	33.40	258.00	6,304.5	-129.1	-45.4	66.8	6.38	6.36	0.91
6,356.0	35.10	260.60	6,321.9	-131.3	-57.1	78.6	10.68	8.10	12.38
6,378.0	35.80	261.70	6,339.8	-133.3	-69.7	91.4	4.30	3.18	5.00
6,398.0	36.00	262.60	6,356.0	-134.9	-81.3	103.1	2.82	1.00	4.50
6,420.0	36.90	261.30	6,373.7	-136.7	-94.2	116.2	5.39	4.09	-5.91
6,441.0	38.50	261.30	6,390.3	-138.6	-106.9	129.0	7.62	7.62	0.00
6,463.0	40.40	259.20	6,407.3	-141.0	-120.7	143.0	10.55	8.64	-9.55
6,484.0	42.50	258.90	6,423.0	-143.6	-134.3	156.9	10.04	10.00	-1.43
6,506.0	44.10	259.50	6,439.0	-146.5	-149.2	172.0	7.51	7.27	2.73
6,527.0	45.60	260.10	6,453.9	-149.1	-163.7	186.8	7.42	7.14	2.86
6,549.0	47.90	261.00	6,469.0	-151.7	-179.5	202.8	10.87	10.45	4.09
6,570.0	49.10	260.30	6,482.9	-154.3	-195.1	218.5	6.24	5.71	-3.33
6,592.0	51.90	261.40	6,496.9	-157.0	-211.8	235.5	13.30	12.73	5.00
6,613.0	53.20	260.60	6,509.7	-159.6	-228.3	252.2	6.89	6.19	-3.81
6,635.0	54.10	258.60	6,522.7	-162.8	-245.7	269.9	8.39	4.09	-9.09
6,655.0	55.40	257.80	6,534.3	-166.1	-261.7	286.2	7.27	6.50	-4.00
6,677.0	56.80	258.20	6,546.5	-169.9	-279.6	304.5	6.54	6.36	1.82
6,698.0	58.20	259.00	6,557.8	-173.4	-296.9	322.2	7.40	6.67	3.81
6,720.0	59.90	259.50	6,569.1	-176.9	-315.5	341.0	7.97	7.73	2.27
6,741.0	62.00	259.00	6,579.3	-180.4	-333.5	359.4	10.21	10.00	-2.38
6,763.0	64.60	259.00	6,589.2	-184.1	-352.8	379.0	11.82	11.82	0.00
6,784.0	67.10	259.30	6,597.8	-187.7	-371.6	398.2	11.98	11.90	1.43
6,806.0	68.90	259.20	6,606.0	-191.5	-391.6	418.6	8.19	8.18	-0.45
6,827.0	71.00	260.60	6,613.2	-195.0	-411.1	438.3	11.80	10.00	6.67
6,849.0	72.90	259.80	6,620.1	-198.5	-431.7	459.2	9.30	8.64	-3.64
6,870.0	75.00	261.30	6,625.9	-201.8	-451.6	479.4	12.13	10.00	7.14
6,892.0	76.00	260.70	6,631.4	-205.2	-472.6	500.7	5.26	4.55	-2.73
6,913.0	77.20	262.00	6,636.2	-208.3	-492.8	521.1	8.30	5.71	6.19
6,934.0	78.30	262.20	6,640.7	-211.1	-513.1	541.6	5.32	5.24	0.95
6,955.0	79.80	262.80	6,644.7	-213.8	-533.6	562.2	7.67	7.14	2.86
6,977.0	81.00	262.80	6,648.4	-216.5	-555.1	583.9	5.45	5.45	0.00
6,998.0	82.00	262.10	6,651.5	-219.2	-575.7	604.7	5.79	4.76	-3.33
7,020.0	82.90	262.20	6,654.3	-222.2	-597.3	626.5	4.12	4.09	0.45
7,033.0	83.40	261.30	6,655.9	-224.0	-610.1	639.4	7.88	3.85	-6.92
7,124.0	83.90	260.20	6,666.0	-238.6	-699.3	729.8	1.32	0.55	-1.21
7,156.0	84.80	260.40	6,669.1	-243.9	-730.7	761.6	2.88	2.81	0.63
7,188.0	86.20	260.80	6,671.6	-249.2	-762.2	793.5	4.55	4.38	1.25
7,220.0	87.90	260.50	6,673.3	-254.3	-793.7	825.5	5.39	5.31	-0.94
7,252.0	89.90	259.90	6,673.9	-259.8	-825.2	857.5	6.53	6.25	-1.88
7,284.0	91.90	260.60	6,673.4	-265.2	-856.8	889.5	6.62	6.25	2.19
7,315.0	91.30	261.30	6,672.5	-270.1	-887.4	920.5	2.97	-1.94	2.26
7,347.0	90.30	260.60	6,672.1	-275.1	-919.0	952.5	3.81	-3.13	-2.19
7,379.0	90.20	260.20	6,671.9	-280.5	-950.5	984.5	1.29	-0.31	-1.25
7,411.0	90.30	260.60	6,671.8	-285.8	-982.1	1,016.5	1.29	0.31	1.25
7,443.0	90.30	259.90	6,671.6	-291.2	-1,013.6	1,048.5	2.19	0.00	-2.19
7,475.0	89.80	257.90	6,671.6	-297.4	-1,045.0	1,080.5	6.44	-1.56	-6.25
7,507.0	89.90	257.70	6,671.7	-304.1	-1,076.3	1,112.4	0.70	0.31	-0.63
7,539.0	89.90	258.60	6,671.7	-310.7	-1,107.6	1,144.4	2.81	0.00	2.81
7,571.0	90.10	259.20	6,671.7	-316.9	-1,139.0	1,176.4	1.98	0.63	1.88
7,603.0	90.10	260.10	6,671.7	-322.6	-1,170.5	1,208.4	2.81	0.00	2.81
7,635.0	90.00	260.60	6,671.7	-328.0	-1,202.0	1,240.4	1.59	-0.31	1.56
7,667.0	90.30	262.80	6,671.6	-332.6	-1,233.7	1,272.4	6.94	0.94	6.88

Company: NOBLE ENERGY INC WELD COUNTY CO
 Project: SEC.34-T4N-R64W
 Site: Aloysius C34-99HZ Pad Sec.34-T4N-R64W
 Well: Aloysius C34-99HZ
 Wellbore: Wellbore #1
 Design: Wellbore #1

Local Co-ordinate Reference: Site Aloysius C34-99HZ Pad Sec.34-T4N-R64W
 TVD Reference: RKB @ 4705.0ft (Ensign 136 KB 13')
 MD Reference: RKB @ 4705.0ft (Ensign 136 KB 13')
 North Reference: True
 Survey Calculation Method: Minimum Curvature
 Database: Landmark

Survey

Measured Depth (ft)	Inclination (°)	Azimuth (°)	Vertical Depth (ft)	+N/-S (ft)	+E/-W (ft)	Vertical Section (ft)	Dogleg Rate (°/100ft)	Build Rate (°/100ft)	Turn Rate (°/100ft)
7,699.0	90.20	263.80	6,671.4	-336.3	-1,265.5	1,304.3	3.14	-0.31	3.13
7,731.0	89.80	264.00	6,671.4	-339.7	-1,297.3	1,336.3	1.40	-1.25	0.63
7,762.0	90.20	264.20	6,671.4	-342.9	-1,328.1	1,367.2	1.44	1.29	0.65
7,794.0	90.40	263.60	6,671.3	-346.3	-1,360.0	1,399.1	1.98	0.63	-1.88
7,826.0	91.10	261.70	6,670.8	-350.4	-1,391.7	1,431.1	6.33	2.19	-5.94
7,858.0	92.00	261.00	6,670.0	-355.2	-1,423.3	1,463.1	3.56	2.81	-2.19
7,890.0	91.90	261.30	6,668.9	-360.1	-1,454.9	1,495.0	0.99	-0.31	0.94
7,922.0	90.60	259.90	6,668.2	-365.4	-1,486.5	1,527.0	5.97	-4.06	-4.38
7,954.0	88.60	259.00	6,668.4	-371.2	-1,517.9	1,559.0	6.85	-6.25	-2.81
7,986.0	88.50	257.80	6,669.2	-377.7	-1,549.3	1,591.0	3.76	-0.31	-3.75
8,018.0	89.60	257.20	6,669.8	-384.6	-1,580.5	1,623.0	3.92	3.44	-1.88
8,050.0	90.40	258.40	6,669.8	-391.3	-1,611.8	1,654.9	4.51	2.50	3.75
8,081.0	90.90	257.90	6,669.4	-397.7	-1,642.1	1,685.9	2.28	1.61	-1.61
8,113.0	90.20	258.80	6,669.1	-404.2	-1,673.5	1,717.9	3.56	-2.19	2.81
8,145.0	89.30	258.40	6,669.2	-410.5	-1,704.8	1,749.9	3.08	-2.81	-1.25
8,177.0	90.20	256.60	6,669.4	-417.4	-1,736.1	1,781.8	6.29	2.81	-5.63
8,209.0	91.10	256.00	6,669.0	-425.0	-1,767.1	1,813.8	3.38	2.81	-1.88
8,241.0	91.10	256.60	6,668.4	-432.6	-1,798.2	1,845.7	1.87	0.00	1.88
8,273.0	92.00	258.40	6,667.5	-439.5	-1,829.5	1,877.6	6.29	2.81	5.63
8,305.0	92.00	259.60	6,666.4	-445.6	-1,860.9	1,909.6	3.75	0.00	3.75
8,337.0	89.60	261.90	6,666.0	-450.7	-1,892.4	1,941.6	10.39	-7.50	7.19
8,368.0	89.10	261.40	6,666.3	-455.2	-1,923.1	1,972.6	2.28	-1.61	-1.61
8,400.0	90.00	263.10	6,666.6	-459.6	-1,954.8	2,004.6	6.01	2.81	5.31
8,431.0	90.10	264.20	6,666.5	-463.0	-1,985.6	2,035.5	3.56	0.32	3.55
8,463.0	89.80	261.20	6,666.6	-467.1	-2,017.3	2,067.5	9.42	-0.94	-9.38
8,495.0	89.80	257.50	6,666.7	-473.0	-2,048.8	2,099.5	11.56	0.00	-11.56
8,527.0	89.70	256.40	6,666.8	-480.2	-2,080.0	2,131.4	3.45	-0.31	-3.44
8,559.0	89.50	254.20	6,667.0	-488.3	-2,110.9	2,163.3	6.90	-0.63	-6.88
8,591.0	89.60	252.90	6,667.3	-497.4	-2,141.6	2,195.1	4.07	0.31	-4.06
8,623.0	89.50	252.50	6,667.5	-506.9	-2,172.2	2,226.8	1.29	-0.31	-1.25
8,655.0	89.70	253.20	6,667.8	-516.3	-2,202.7	2,258.6	2.27	0.63	2.19
8,687.0	90.50	251.70	6,667.7	-526.0	-2,233.2	2,290.3	5.31	2.50	-4.69
8,718.0	92.40	253.90	6,666.9	-535.1	-2,262.8	2,321.0	9.38	6.13	7.10
8,750.0	92.80	253.60	6,665.5	-544.1	-2,293.5	2,352.8	1.56	1.25	-0.94
8,782.0	92.60	254.10	6,664.0	-553.0	-2,324.2	2,384.5	1.68	-0.63	1.56
8,814.0	92.40	255.30	6,662.6	-561.4	-2,355.1	2,416.4	3.80	-0.63	3.75
8,846.0	91.60	256.10	6,661.5	-569.3	-2,386.1	2,448.2	3.53	-2.50	2.50
8,878.0	90.60	257.60	6,660.8	-576.6	-2,417.2	2,480.2	5.63	-3.13	4.69
8,910.0	90.90	256.50	6,660.4	-583.8	-2,448.4	2,512.1	3.56	0.94	-3.44
8,942.0	90.50	258.40	6,660.0	-590.7	-2,479.6	2,544.1	6.07	-1.25	5.94
8,974.0	88.90	259.60	6,660.2	-596.8	-2,511.0	2,576.1	6.25	-5.00	3.75
9,006.0	88.50	259.90	6,660.9	-602.5	-2,542.5	2,608.1	1.56	-1.25	0.94
9,037.0	89.30	259.80	6,661.5	-608.0	-2,573.0	2,639.1	2.60	2.58	-0.32
9,069.0	90.20	260.80	6,661.7	-613.4	-2,604.6	2,671.1	4.20	2.81	3.13
9,101.0	90.80	261.90	6,661.4	-618.2	-2,636.2	2,703.1	3.92	1.88	3.44
9,133.0	90.70	261.80	6,661.0	-622.7	-2,667.9	2,735.0	0.44	-0.31	-0.31
9,164.0	90.50	264.00	6,660.6	-626.5	-2,698.6	2,766.0	7.13	-0.65	7.10
9,196.0	89.10	264.50	6,660.8	-629.7	-2,730.5	2,797.9	4.65	-4.38	1.56
9,228.0	89.00	264.90	6,661.3	-632.7	-2,762.3	2,829.8	1.29	-0.31	1.25
9,260.0	89.80	263.80	6,661.6	-635.9	-2,794.2	2,861.7	4.25	2.50	-3.44
9,292.0	90.50	264.20	6,661.5	-639.2	-2,826.0	2,893.6	2.52	2.19	1.25
9,324.0	90.70	264.20	6,661.2	-642.4	-2,857.8	2,925.6	0.63	0.63	0.00
9,356.0	92.00	264.30	6,660.4	-645.6	-2,889.7	2,957.5	4.07	4.06	0.31
9,388.0	92.40	263.60	6,659.2	-649.0	-2,921.5	2,989.4	2.52	1.25	-2.19

Company: NOBLE ENERGY INC WELD COUNTY CO
 Project: SEC.34-T4N-R64W
 Site: Aloysius C34-99HZ Pad Sec.34-T4N-R64W
 Well: Aloysius C34-99HZ
 Wellbore: Wellbore #1
 Design: Wellbore #1

Local Co-ordinate Reference: Site Aloysius C34-99HZ Pad Sec.34-T4N-R64W
 TVD Reference: RKB @ 4705.0ft (Ensign 136 KB 13')
 MD Reference: RKB @ 4705.0ft (Ensign 136 KB 13')
 North Reference: True
 Survey Calculation Method: Minimum Curvature
 Database: Landmark

Survey

Measured Depth (ft)	Inclination (°)	Azimuth (°)	Vertical Depth (ft)	+N/-S (ft)	+E/-W (ft)	Vertical Section (ft)	Dogleg Rate (°/100ft)	Build Rate (°/100ft)	Turn Rate (°/100ft)
9,419.0	92.70	264.00	6,657.8	-652.4	-2,952.2	3,020.3	1.61	0.97	1.29
9,451.0	92.00	263.20	6,656.5	-655.9	-2,984.0	3,052.2	3.32	-2.19	-2.50
9,483.0	91.50	264.10	6,655.5	-659.5	-3,015.8	3,084.1	3.22	-1.56	2.81
9,515.0	91.00	263.50	6,654.8	-662.9	-3,047.6	3,116.1	2.44	-1.56	-1.88
9,547.0	90.30	264.20	6,654.5	-666.3	-3,079.4	3,148.0	3.09	-2.19	2.19
9,579.0	90.00	265.10	6,654.4	-669.3	-3,111.3	3,179.9	2.96	-0.94	2.81
9,611.0	89.70	264.90	6,654.5	-672.1	-3,143.2	3,211.8	1.13	-0.94	-0.63
9,642.0	90.70	264.00	6,654.4	-675.1	-3,174.0	3,242.7	4.34	3.23	-2.90
9,674.0	91.60	263.40	6,653.7	-678.6	-3,205.8	3,274.6	3.38	2.81	-1.88
9,706.0	91.70	262.90	6,652.8	-682.4	-3,237.6	3,306.6	1.59	0.31	-1.56
9,738.0	91.50	263.10	6,651.9	-686.3	-3,269.3	3,338.5	0.88	-0.63	0.63
9,770.0	91.20	263.10	6,651.2	-690.2	-3,301.1	3,370.5	0.94	-0.94	0.00
9,802.0	89.80	263.80	6,650.9	-693.8	-3,332.9	3,402.4	4.89	-4.38	2.19
9,833.0	89.50	262.70	6,651.1	-697.5	-3,363.7	3,433.4	3.68	-0.97	-3.55
9,865.0	89.60	263.40	6,651.3	-701.3	-3,395.4	3,465.3	2.21	0.31	2.19
9,897.0	89.90	263.80	6,651.5	-704.9	-3,427.2	3,497.3	1.56	0.94	1.25
9,929.0	89.60	263.70	6,651.6	-708.4	-3,459.0	3,529.2	0.99	-0.94	-0.31
9,961.0	89.50	263.50	6,651.9	-712.0	-3,490.8	3,561.1	0.70	-0.31	-0.63
9,993.0	90.40	262.10	6,651.9	-716.0	-3,522.6	3,593.1	5.20	2.81	-4.38
10,025.0	91.10	263.30	6,651.5	-720.0	-3,554.3	3,625.1	4.34	2.19	3.75
10,057.0	91.10	263.00	6,650.9	-723.8	-3,586.1	3,657.0	0.94	0.00	-0.94
10,089.0	91.00	262.70	6,650.3	-727.8	-3,617.8	3,689.0	0.99	-0.31	-0.94
10,121.0	91.50	263.50	6,649.6	-731.7	-3,649.6	3,720.9	2.95	1.56	2.50
10,152.0	91.10	262.90	6,648.9	-735.3	-3,680.4	3,751.9	2.33	-1.29	-1.94
10,183.0	91.30	262.50	6,648.2	-739.3	-3,711.1	3,782.8	1.44	0.65	-1.29
10,215.0	91.00	262.00	6,647.6	-743.6	-3,742.8	3,814.8	1.82	-0.94	-1.56
10,247.0	89.50	264.10	6,647.4	-747.5	-3,774.6	3,846.8	8.06	-4.69	6.56
10,279.0	88.90	264.00	6,647.9	-750.8	-3,806.4	3,878.7	1.90	-1.88	-0.31
10,311.0	89.10	263.10	6,648.4	-754.4	-3,838.2	3,910.6	2.88	0.63	-2.81
10,343.0	89.80	262.90	6,648.7	-758.3	-3,869.9	3,942.6	2.28	2.19	-0.63
10,375.0	89.90	262.60	6,648.8	-762.3	-3,901.7	3,974.6	0.99	0.31	-0.94
10,407.0	92.00	262.60	6,648.3	-766.4	-3,933.4	4,006.5	6.56	6.56	0.00
10,439.0	91.50	261.30	6,647.3	-770.9	-3,965.1	4,038.5	4.35	-1.56	-4.06
10,470.0	90.00	262.10	6,646.9	-775.4	-3,995.8	4,069.5	5.48	-4.84	2.58
10,502.0	91.00	261.20	6,646.6	-780.0	-4,027.4	4,101.5	4.20	3.13	-2.81
10,523.0	91.90	260.80	6,646.1	-783.3	-4,048.2	4,122.5	4.69	4.29	-1.90
10,570.0	92.50	260.80	6,644.3	-790.8	-4,094.5	4,169.4	1.28	1.28	0.00

BHT 1200'FSL & 535'FWL

Checked By: _____ Approved By: _____ Date: _____