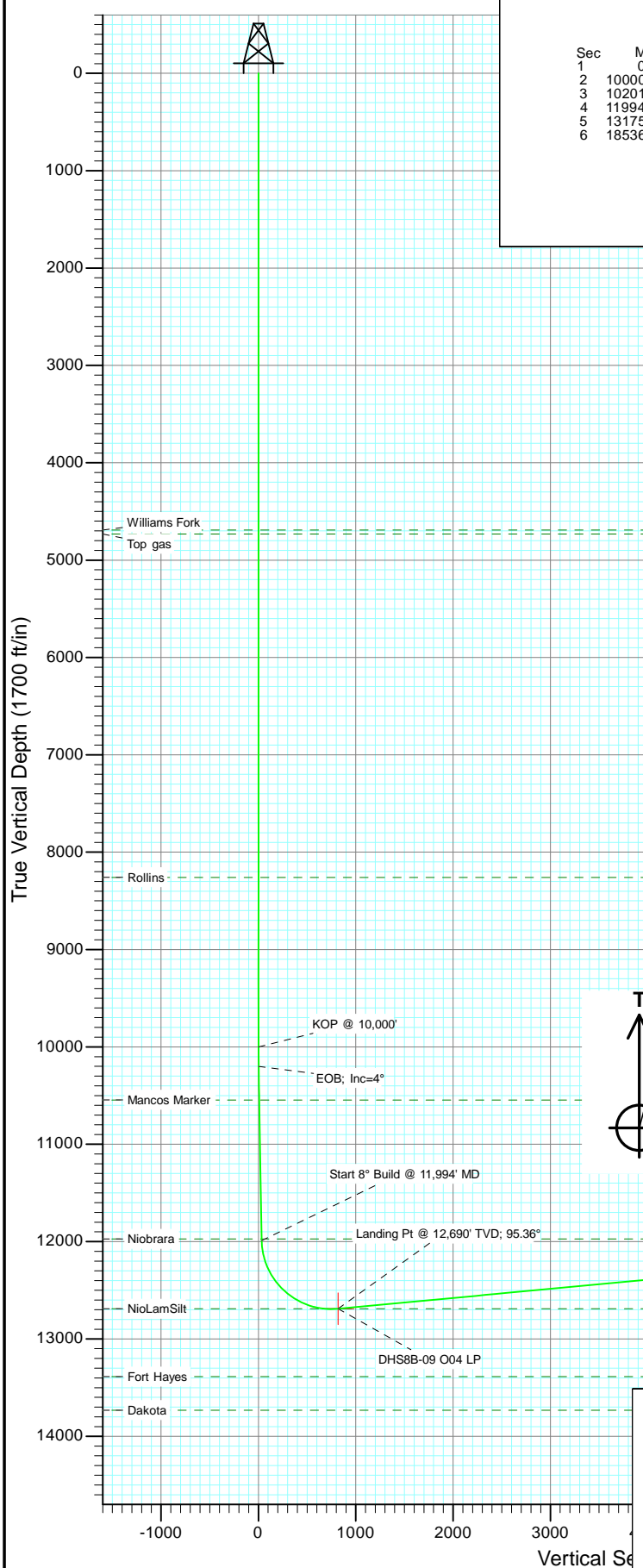
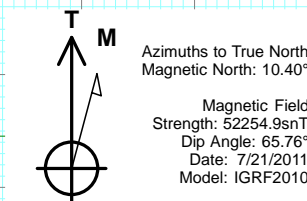
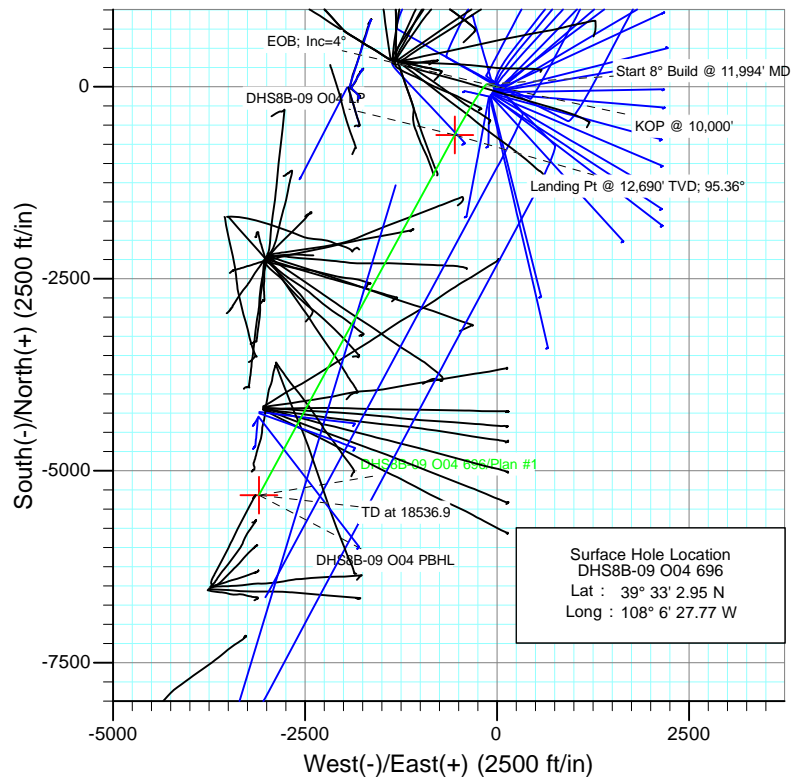




Project: North Piceance
Site: O04 696 (3rd)
Well: DHS8B-09 O04 696
Wellbore: HZ
Design: Plan #1



SECTION DETAILS										
Sec	MD	Inc	Azi	TVD	+N/-S	+E/-W	Dleg	TFace	Vsect	Target
1	0.0	0.00	0.00	0.0	0.0	0.0	0.00	0.00	0.0	
2	10000.0	0.00	0.00	10000.0	0.0	0.0	0.00	0.00	0.0	
3	10201.9	4.04	285.69	10201.7	1.9	-6.8	2.00	285.69	1.8	
4	11994.8	4.04	285.69	11990.1	36.1	-128.4	0.00	0.00	33.5	
5	13175.4	95.36	208.54	12690.0	-626.3	-549.1	8.00	-76.81	817.6	DHS8B-09 O04 LP
6	18536.9	95.36	208.54	12189.0	-5315.8	-3099.3	0.00	0.00	6153.3	DHS8B-09 O04 PBHL

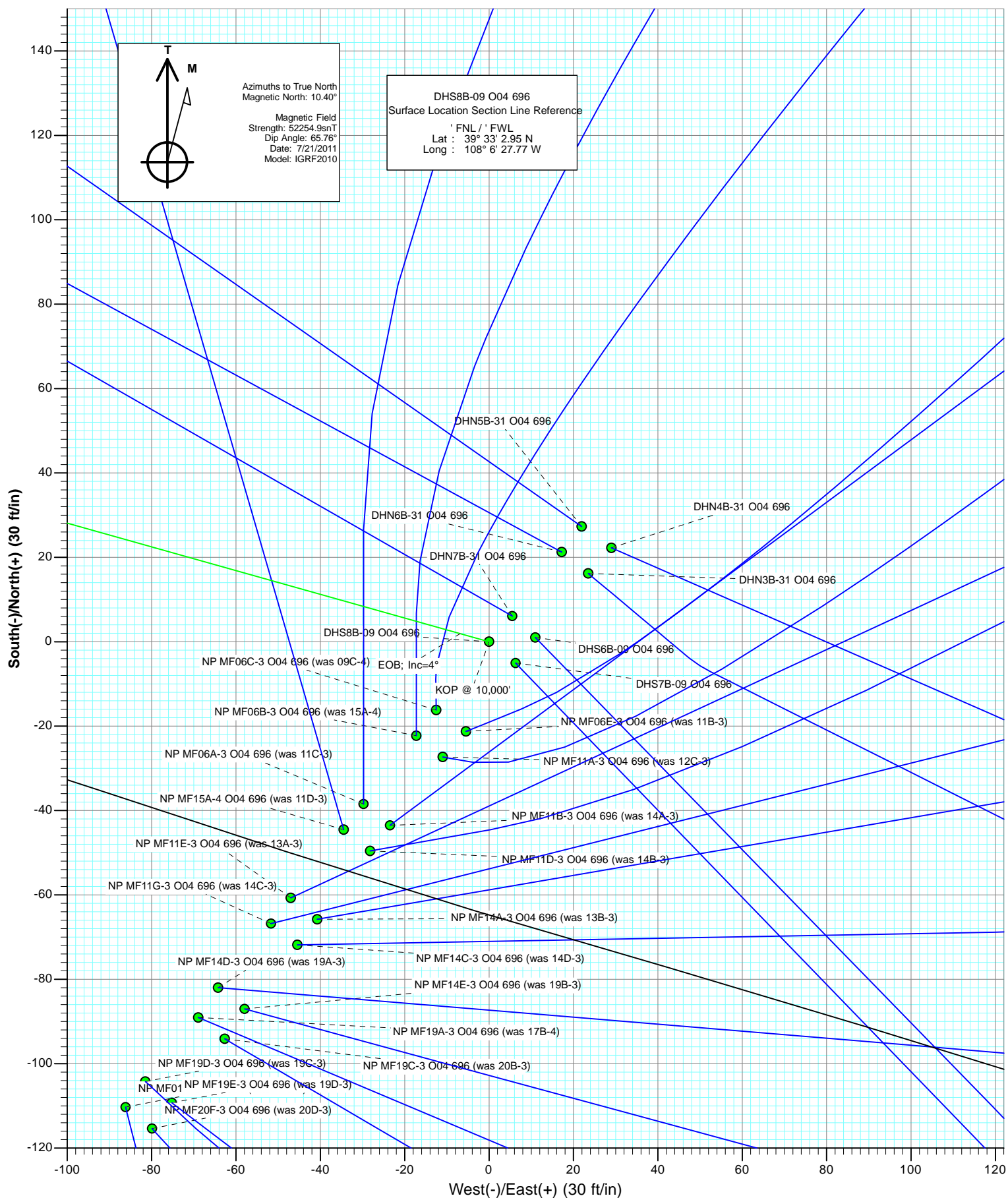


FORMATION TOP DETAILS		
TVDPATH	MDPATH	FORMATION
4692.0	4692.0	Williams Fork
4732.0	4732.0	Top gas
8259.0	8259.0	Rollins
10546.0	10547.0	Mancos Marker
11973.0	11977.6	Niobrara
12690.0	13041.0	NiolaSilt

Plan #1 DHS8B-09 O04 696 115xxx; LR KBE @ 6044.0ft (Original Well Elev) North American Datum 1983 Well DHS8B-09 O04 696, True North						
Type	Target	Azimuth	Origin	Type	N/S	E/W
TD	No Target (Freehand)	210.24	Slot		0.0	0.0
Name	TVD	+N/-S	+E/-W	Latitude	Longitude	
DHS8B-09 O04 PBHL	12189.0	-5315.8	-3099.3	39° 32' 10.41 N	108° 7' 7.33 W	
DHS8B-09 O04 LP	12690.0	-626.3	-549.1	39° 32' 56.76 N	108° 6' 34.78 W	



Project: North Piceance
Site: O04 696 (3rd)
Well: DHS8B-09 O04 696
Wellbore: HZ
Plan: Plan #1



Planning Report

Database:	USA EDM 5000 Multi Users DB	Local Co-ordinate Reference:	Well DHS8B-09 O04 696
Company:	EnCana Oil & Gas (USA) Inc	TVD Reference:	KBE @ 6044.0ft (Original Well Elev)
Project:	North Piceance	MD Reference:	KBE @ 6044.0ft (Original Well Elev)
Site:	O04 696 (3rd)	North Reference:	True
Well:	DHS8B-09 O04 696	Survey Calculation Method:	Minimum Curvature
Wellbore:	HZ		
Design:	Plan #1		

Project	North Piceance		
Map System:	US State Plane 1983	System Datum:	Mean Sea Level
Geo Datum:	North American Datum 1983		
Map Zone:	Colorado Central Zone		

Site	O04 696 (3rd)			
Site Position:		Northing:	1,635,941.08 ft	Latitude: 39° 33' 1.64 N
From:	Lat/Long	Easting:	2,264,673.43 ft	Longitude: 108° 6' 29.09 W
Position Uncertainty:	0.0 ft	Slot Radius:	13.200 in	Grid Convergence: -1.64 °

Well	DHS8B-09 O04 696			
Well Position	+N/-S	0.0 ft	Northing:	1,636,070.60 ft
	+E/-W	0.0 ft	Easting:	2,264,780.58 ft
Position Uncertainty		0.0 ft	Wellhead Elevation:	ft
			Ground Level:	6,022.0 ft

Wellbore	HZ				
Magnetics	Model Name	Sample Date	Declination (°)	Dip Angle (°)	Field Strength (nT)
	IGRF2010	7/21/2011	10.40	65.76	52,255

Design	Plan #1			
Audit Notes:				
Version:	Phase:	PLAN	Tie On Depth:	0.0
Vertical Section:	Depth From (TVD) (ft)	+N/-S (ft)	+E/-W (ft)	Direction (°)
	0.0	0.0	0.0	210.24

Plan Sections										
Measured Depth (ft)	Inclination (°)	Azimuth (°)	Vertical Depth (ft)	+N/-S (ft)	+E/-W (ft)	Dogleg Rate (°/100ft)	Build Rate (°/100ft)	Turn Rate (°/100ft)	TFO (°)	Target
0.0	0.00	0.00	0.0	0.0	0.0	0.00	0.00	0.00	0.00	
10,000.0	0.00	0.00	10,000.0	0.0	0.0	0.00	0.00	0.00	0.00	
10,201.9	4.04	285.69	10,201.7	1.9	-6.8	2.00	2.00	0.00	285.69	
11,994.8	4.04	285.69	11,990.1	36.1	-128.4	0.00	0.00	0.00	0.00	
13,175.4	95.36	208.54	12,690.0	-626.3	-549.1	8.00	7.74	-6.53	-76.81	DHS8B-09 O04 LP
18,536.9	95.36	208.54	12,189.0	-5,315.8	-3,099.3	0.00	0.00	0.00	0.00	DHS8B-09 O04 PBHL

Planning Report

Database:	USA EDM 5000 Multi Users DB	Local Co-ordinate Reference:	Well DHS8B-09 O04 696
Company:	EnCana Oil & Gas (USA) Inc	TVD Reference:	KBE @ 6044.0ft (Original Well Elev)
Project:	North Piceance	MD Reference:	KBE @ 6044.0ft (Original Well Elev)
Site:	O04 696 (3rd)	North Reference:	True
Well:	DHS8B-09 O04 696	Survey Calculation Method:	Minimum Curvature
Wellbore:	HZ		
Design:	Plan #1		

Planned Survey									
Measured Depth (ft)	Inclination (°)	Azimuth (°)	Vertical Depth (ft)	+N/-S (ft)	+E/-W (ft)	Vertical Section (ft)	Dogleg Rate (°/100ft)	Build Rate (°/100ft)	Comments / Formations
0.0	0.00	0.00	0.0	0.0	0.0	0.0	0.00	0.00	
100.0	0.00	0.00	100.0	0.0	0.0	0.0	0.00	0.00	
200.0	0.00	0.00	200.0	0.0	0.0	0.0	0.00	0.00	
300.0	0.00	0.00	300.0	0.0	0.0	0.0	0.00	0.00	
400.0	0.00	0.00	400.0	0.0	0.0	0.0	0.00	0.00	
500.0	0.00	0.00	500.0	0.0	0.0	0.0	0.00	0.00	
600.0	0.00	0.00	600.0	0.0	0.0	0.0	0.00	0.00	
700.0	0.00	0.00	700.0	0.0	0.0	0.0	0.00	0.00	
800.0	0.00	0.00	800.0	0.0	0.0	0.0	0.00	0.00	
900.0	0.00	0.00	900.0	0.0	0.0	0.0	0.00	0.00	
1,000.0	0.00	0.00	1,000.0	0.0	0.0	0.0	0.00	0.00	
1,100.0	0.00	0.00	1,100.0	0.0	0.0	0.0	0.00	0.00	
1,200.0	0.00	0.00	1,200.0	0.0	0.0	0.0	0.00	0.00	
1,300.0	0.00	0.00	1,300.0	0.0	0.0	0.0	0.00	0.00	
1,400.0	0.00	0.00	1,400.0	0.0	0.0	0.0	0.00	0.00	
1,500.0	0.00	0.00	1,500.0	0.0	0.0	0.0	0.00	0.00	
1,600.0	0.00	0.00	1,600.0	0.0	0.0	0.0	0.00	0.00	
1,700.0	0.00	0.00	1,700.0	0.0	0.0	0.0	0.00	0.00	
1,800.0	0.00	0.00	1,800.0	0.0	0.0	0.0	0.00	0.00	
1,900.0	0.00	0.00	1,900.0	0.0	0.0	0.0	0.00	0.00	
2,000.0	0.00	0.00	2,000.0	0.0	0.0	0.0	0.00	0.00	
2,100.0	0.00	0.00	2,100.0	0.0	0.0	0.0	0.00	0.00	
2,200.0	0.00	0.00	2,200.0	0.0	0.0	0.0	0.00	0.00	
2,300.0	0.00	0.00	2,300.0	0.0	0.0	0.0	0.00	0.00	
2,400.0	0.00	0.00	2,400.0	0.0	0.0	0.0	0.00	0.00	
2,500.0	0.00	0.00	2,500.0	0.0	0.0	0.0	0.00	0.00	
2,600.0	0.00	0.00	2,600.0	0.0	0.0	0.0	0.00	0.00	
2,700.0	0.00	0.00	2,700.0	0.0	0.0	0.0	0.00	0.00	
2,800.0	0.00	0.00	2,800.0	0.0	0.0	0.0	0.00	0.00	
2,900.0	0.00	0.00	2,900.0	0.0	0.0	0.0	0.00	0.00	
3,000.0	0.00	0.00	3,000.0	0.0	0.0	0.0	0.00	0.00	
3,100.0	0.00	0.00	3,100.0	0.0	0.0	0.0	0.00	0.00	
3,200.0	0.00	0.00	3,200.0	0.0	0.0	0.0	0.00	0.00	
3,300.0	0.00	0.00	3,300.0	0.0	0.0	0.0	0.00	0.00	
3,400.0	0.00	0.00	3,400.0	0.0	0.0	0.0	0.00	0.00	
3,500.0	0.00	0.00	3,500.0	0.0	0.0	0.0	0.00	0.00	
3,600.0	0.00	0.00	3,600.0	0.0	0.0	0.0	0.00	0.00	
3,700.0	0.00	0.00	3,700.0	0.0	0.0	0.0	0.00	0.00	
3,800.0	0.00	0.00	3,800.0	0.0	0.0	0.0	0.00	0.00	
3,900.0	0.00	0.00	3,900.0	0.0	0.0	0.0	0.00	0.00	
4,000.0	0.00	0.00	4,000.0	0.0	0.0	0.0	0.00	0.00	
4,100.0	0.00	0.00	4,100.0	0.0	0.0	0.0	0.00	0.00	
4,200.0	0.00	0.00	4,200.0	0.0	0.0	0.0	0.00	0.00	
4,300.0	0.00	0.00	4,300.0	0.0	0.0	0.0	0.00	0.00	
4,400.0	0.00	0.00	4,400.0	0.0	0.0	0.0	0.00	0.00	
4,500.0	0.00	0.00	4,500.0	0.0	0.0	0.0	0.00	0.00	
4,600.0	0.00	0.00	4,600.0	0.0	0.0	0.0	0.00	0.00	
4,692.0	0.00	0.00	4,692.0	0.0	0.0	0.0	0.00	0.00	Williams Fork
4,700.0	0.00	0.00	4,700.0	0.0	0.0	0.0	0.00	0.00	
4,732.0	0.00	0.00	4,732.0	0.0	0.0	0.0	0.00	0.00	Top gas
4,800.0	0.00	0.00	4,800.0	0.0	0.0	0.0	0.00	0.00	
4,900.0	0.00	0.00	4,900.0	0.0	0.0	0.0	0.00	0.00	

Planning Report

Database:	USA EDM 5000 Multi Users DB	Local Co-ordinate Reference:	Well DHS8B-09 O04 696
Company:	EnCana Oil & Gas (USA) Inc	TVD Reference:	KBE @ 6044.0ft (Original Well Elev)
Project:	North Piceance	MD Reference:	KBE @ 6044.0ft (Original Well Elev)
Site:	O04 696 (3rd)	North Reference:	True
Well:	DHS8B-09 O04 696	Survey Calculation Method:	Minimum Curvature
Wellbore:	HZ		
Design:	Plan #1		

Planned Survey									
Measured Depth (ft)	Inclination (°)	Azimuth (°)	Vertical Depth (ft)	+N/-S (ft)	+E/-W (ft)	Vertical Section (ft)	Dogleg Rate (°/100ft)	Build Rate (°/100ft)	Comments / Formations
5,000.0	0.00	0.00	5,000.0	0.0	0.0	0.0	0.00	0.00	
5,100.0	0.00	0.00	5,100.0	0.0	0.0	0.0	0.00	0.00	
5,200.0	0.00	0.00	5,200.0	0.0	0.0	0.0	0.00	0.00	
5,300.0	0.00	0.00	5,300.0	0.0	0.0	0.0	0.00	0.00	
5,400.0	0.00	0.00	5,400.0	0.0	0.0	0.0	0.00	0.00	
5,500.0	0.00	0.00	5,500.0	0.0	0.0	0.0	0.00	0.00	
5,600.0	0.00	0.00	5,600.0	0.0	0.0	0.0	0.00	0.00	
5,700.0	0.00	0.00	5,700.0	0.0	0.0	0.0	0.00	0.00	
5,800.0	0.00	0.00	5,800.0	0.0	0.0	0.0	0.00	0.00	
5,900.0	0.00	0.00	5,900.0	0.0	0.0	0.0	0.00	0.00	
6,000.0	0.00	0.00	6,000.0	0.0	0.0	0.0	0.00	0.00	
6,100.0	0.00	0.00	6,100.0	0.0	0.0	0.0	0.00	0.00	
6,200.0	0.00	0.00	6,200.0	0.0	0.0	0.0	0.00	0.00	
6,300.0	0.00	0.00	6,300.0	0.0	0.0	0.0	0.00	0.00	
6,400.0	0.00	0.00	6,400.0	0.0	0.0	0.0	0.00	0.00	
6,500.0	0.00	0.00	6,500.0	0.0	0.0	0.0	0.00	0.00	
6,600.0	0.00	0.00	6,600.0	0.0	0.0	0.0	0.00	0.00	
6,700.0	0.00	0.00	6,700.0	0.0	0.0	0.0	0.00	0.00	
6,800.0	0.00	0.00	6,800.0	0.0	0.0	0.0	0.00	0.00	
6,900.0	0.00	0.00	6,900.0	0.0	0.0	0.0	0.00	0.00	
7,000.0	0.00	0.00	7,000.0	0.0	0.0	0.0	0.00	0.00	
7,100.0	0.00	0.00	7,100.0	0.0	0.0	0.0	0.00	0.00	
7,200.0	0.00	0.00	7,200.0	0.0	0.0	0.0	0.00	0.00	
7,300.0	0.00	0.00	7,300.0	0.0	0.0	0.0	0.00	0.00	
7,400.0	0.00	0.00	7,400.0	0.0	0.0	0.0	0.00	0.00	
7,500.0	0.00	0.00	7,500.0	0.0	0.0	0.0	0.00	0.00	
7,600.0	0.00	0.00	7,600.0	0.0	0.0	0.0	0.00	0.00	
7,700.0	0.00	0.00	7,700.0	0.0	0.0	0.0	0.00	0.00	
7,800.0	0.00	0.00	7,800.0	0.0	0.0	0.0	0.00	0.00	
7,900.0	0.00	0.00	7,900.0	0.0	0.0	0.0	0.00	0.00	
8,000.0	0.00	0.00	8,000.0	0.0	0.0	0.0	0.00	0.00	
8,100.0	0.00	0.00	8,100.0	0.0	0.0	0.0	0.00	0.00	
8,200.0	0.00	0.00	8,200.0	0.0	0.0	0.0	0.00	0.00	
8,259.0	0.00	0.00	8,259.0	0.0	0.0	0.0	0.00	0.00	Rollins
8,300.0	0.00	0.00	8,300.0	0.0	0.0	0.0	0.00	0.00	
8,400.0	0.00	0.00	8,400.0	0.0	0.0	0.0	0.00	0.00	
8,500.0	0.00	0.00	8,500.0	0.0	0.0	0.0	0.00	0.00	
8,600.0	0.00	0.00	8,600.0	0.0	0.0	0.0	0.00	0.00	
8,700.0	0.00	0.00	8,700.0	0.0	0.0	0.0	0.00	0.00	
8,800.0	0.00	0.00	8,800.0	0.0	0.0	0.0	0.00	0.00	
8,900.0	0.00	0.00	8,900.0	0.0	0.0	0.0	0.00	0.00	
9,000.0	0.00	0.00	9,000.0	0.0	0.0	0.0	0.00	0.00	
9,100.0	0.00	0.00	9,100.0	0.0	0.0	0.0	0.00	0.00	
9,200.0	0.00	0.00	9,200.0	0.0	0.0	0.0	0.00	0.00	
9,300.0	0.00	0.00	9,300.0	0.0	0.0	0.0	0.00	0.00	
9,400.0	0.00	0.00	9,400.0	0.0	0.0	0.0	0.00	0.00	
9,500.0	0.00	0.00	9,500.0	0.0	0.0	0.0	0.00	0.00	
9,600.0	0.00	0.00	9,600.0	0.0	0.0	0.0	0.00	0.00	
9,700.0	0.00	0.00	9,700.0	0.0	0.0	0.0	0.00	0.00	
9,800.0	0.00	0.00	9,800.0	0.0	0.0	0.0	0.00	0.00	
9,900.0	0.00	0.00	9,900.0	0.0	0.0	0.0	0.00	0.00	
10,000.0	0.00	0.00	10,000.0	0.0	0.0	0.0	0.00	0.00	KOP @ 10,000'

Planning Report

Database:	USA EDM 5000 Multi Users DB	Local Co-ordinate Reference:	Well DHS8B-09 O04 696
Company:	EnCana Oil & Gas (USA) Inc	TVD Reference:	KBE @ 6044.0ft (Original Well Elev)
Project:	North Piceance	MD Reference:	KBE @ 6044.0ft (Original Well Elev)
Site:	O04 696 (3rd)	North Reference:	True
Well:	DHS8B-09 O04 696	Survey Calculation Method:	Minimum Curvature
Wellbore:	HZ		
Design:	Plan #1		

Planned Survey									
Measured Depth (ft)	Inclination (°)	Azimuth (°)	Vertical Depth (ft)	+N/-S (ft)	+E/-W (ft)	Vertical Section (ft)	Dogleg Rate (°/100ft)	Build Rate (°/100ft)	Comments / Formations
10,100.0	2.00	285.69	10,100.0	0.5	-1.7	0.4	2.00	2.00	
10,200.0	4.00	285.69	10,199.8	1.9	-6.7	1.8	2.00	2.00	
10,201.9	4.04	285.69	10,201.7	1.9	-6.8	1.8	2.00	2.00	EOB; Inc=4°
10,300.0	4.04	285.69	10,299.6	3.8	-13.5	3.5	0.00	0.00	
10,400.0	4.04	285.69	10,399.3	5.7	-20.3	5.3	0.00	0.00	
10,500.0	4.04	285.69	10,499.1	7.6	-27.1	7.1	0.00	0.00	
10,547.0	4.04	285.69	10,546.0	8.5	-30.2	7.9	0.00	0.00	Mancos Marker
10,600.0	4.04	285.69	10,598.8	9.5	-33.8	8.8	0.00	0.00	
10,700.0	4.04	285.69	10,698.6	11.4	-40.6	10.6	0.00	0.00	
10,800.0	4.04	285.69	10,798.3	13.3	-47.4	12.4	0.00	0.00	
10,900.0	4.04	285.69	10,898.1	15.2	-54.2	14.1	0.00	0.00	
11,000.0	4.04	285.69	10,997.9	17.1	-61.0	15.9	0.00	0.00	
11,100.0	4.04	285.69	11,097.6	19.0	-67.7	17.7	0.00	0.00	
11,200.0	4.04	285.69	11,197.4	20.9	-74.5	19.5	0.00	0.00	
11,300.0	4.04	285.69	11,297.1	22.8	-81.3	21.2	0.00	0.00	
11,400.0	4.04	285.69	11,396.9	24.7	-88.1	23.0	0.00	0.00	
11,500.0	4.04	285.69	11,496.6	26.6	-94.9	24.8	0.00	0.00	
11,600.0	4.04	285.69	11,596.4	28.5	-101.6	26.5	0.00	0.00	
11,700.0	4.04	285.69	11,696.1	30.5	-108.4	28.3	0.00	0.00	
11,800.0	4.04	285.69	11,795.9	32.4	-115.2	30.1	0.00	0.00	
11,900.0	4.04	285.69	11,895.6	34.3	-122.0	31.8	0.00	0.00	
11,977.6	4.04	285.69	11,973.0	35.7	-127.2	33.2	0.00	0.00	Niobrara
11,994.8	4.04	285.69	11,990.1	36.1	-128.4	33.5	0.00	0.00	Start 8° Build @ 11,994' MD
12,000.0	4.15	280.04	11,995.4	36.1	-128.8	33.6	8.00	2.21	
12,100.0	10.13	231.53	12,094.6	31.3	-139.2	43.1	8.00	5.98	
12,200.0	17.77	221.29	12,191.6	14.3	-156.2	66.3	8.00	7.64	
12,300.0	25.63	217.15	12,284.5	-14.4	-179.4	102.8	8.00	7.86	
12,400.0	33.55	214.86	12,371.4	-54.4	-208.3	151.9	8.00	7.92	
12,500.0	41.50	213.36	12,450.6	-104.8	-242.3	212.6	8.00	7.95	
12,600.0	49.46	212.28	12,520.7	-164.7	-280.9	283.8	8.00	7.96	
12,700.0	57.43	211.42	12,580.2	-232.9	-323.2	364.0	8.00	7.97	
12,800.0	65.40	210.71	12,628.0	-308.1	-368.5	451.7	8.00	7.98	
12,900.0	73.38	210.08	12,663.2	-388.7	-415.8	545.3	8.00	7.98	
13,000.0	81.36	209.51	12,685.0	-473.4	-464.3	642.8	8.00	7.98	
13,041.0	84.64	209.28	12,690.0	-508.8	-484.2	683.5	8.00	7.98	NioLamSilt
13,100.0	89.34	208.95	12,693.1	-560.3	-512.9	742.3	8.00	7.98	
13,175.4	95.36	208.54	12,690.0	-626.3	-549.1	817.6	8.00	7.98	Landing Pt @ 12,690' TVD; 95.36° - DHS8B-09
13,200.0	95.36	208.54	12,687.7	-647.8	-560.8	842.1	0.00	0.00	
13,300.0	95.36	208.54	12,678.4	-735.3	-608.4	941.6	0.00	0.00	
13,400.0	95.36	208.54	12,669.0	-822.7	-655.9	1,041.1	0.00	0.00	
13,500.0	95.36	208.54	12,659.7	-910.2	-703.5	1,140.6	0.00	0.00	
13,600.0	95.36	208.54	12,650.3	-997.7	-751.1	1,240.2	0.00	0.00	
13,700.0	95.36	208.54	12,641.0	-1,085.1	-798.6	1,339.7	0.00	0.00	
13,800.0	95.36	208.54	12,631.6	-1,172.6	-846.2	1,439.2	0.00	0.00	
13,900.0	95.36	208.54	12,622.3	-1,260.1	-893.8	1,538.7	0.00	0.00	
14,000.0	95.36	208.54	12,612.9	-1,347.5	-941.3	1,638.2	0.00	0.00	
14,100.0	95.36	208.54	12,603.6	-1,435.0	-988.9	1,737.8	0.00	0.00	
14,200.0	95.36	208.54	12,594.3	-1,522.5	-1,036.4	1,837.3	0.00	0.00	
14,300.0	95.36	208.54	12,584.9	-1,609.9	-1,084.0	1,936.8	0.00	0.00	
14,400.0	95.36	208.54	12,575.6	-1,697.4	-1,131.6	2,036.3	0.00	0.00	
14,500.0	95.36	208.54	12,566.2	-1,784.9	-1,179.1	2,135.8	0.00	0.00	
14,600.0	95.36	208.54	12,556.9	-1,872.3	-1,226.7	2,235.3	0.00	0.00	

Planning Report

Database:	USA EDM 5000 Multi Users DB	Local Co-ordinate Reference:	Well DHS8B-09 O04 696
Company:	EnCana Oil & Gas (USA) Inc	TVD Reference:	KBE @ 6044.0ft (Original Well Elev)
Project:	North Piceance	MD Reference:	KBE @ 6044.0ft (Original Well Elev)
Site:	O04 696 (3rd)	North Reference:	True
Well:	DHS8B-09 O04 696	Survey Calculation Method:	Minimum Curvature
Wellbore:	HZ		
Design:	Plan #1		

Planned Survey									
Measured Depth (ft)	Inclination (°)	Azimuth (°)	Vertical Depth (ft)	+N/-S (ft)	+E/-W (ft)	Vertical Section (ft)	Dogleg Rate (°/100ft)	Build Rate (°/100ft)	Comments / Formations
14,700.0	95.36	208.54	12,547.5	-1,959.8	-1,274.3	2,334.9	0.00	0.00	
14,800.0	95.36	208.54	12,538.2	-2,047.3	-1,321.8	2,434.4	0.00	0.00	
14,900.0	95.36	208.54	12,528.8	-2,134.7	-1,369.4	2,533.9	0.00	0.00	
15,000.0	95.36	208.54	12,519.5	-2,222.2	-1,417.0	2,633.4	0.00	0.00	
15,100.0	95.36	208.54	12,510.2	-2,309.7	-1,464.5	2,732.9	0.00	0.00	
15,200.0	95.36	208.54	12,500.8	-2,397.1	-1,512.1	2,832.5	0.00	0.00	
15,300.0	95.36	208.54	12,491.5	-2,484.6	-1,559.7	2,932.0	0.00	0.00	
15,400.0	95.36	208.54	12,482.1	-2,572.0	-1,607.2	3,031.5	0.00	0.00	
15,500.0	95.36	208.54	12,472.8	-2,659.5	-1,654.8	3,131.0	0.00	0.00	
15,600.0	95.36	208.54	12,463.4	-2,747.0	-1,702.4	3,230.5	0.00	0.00	
15,700.0	95.36	208.54	12,454.1	-2,834.4	-1,749.9	3,330.1	0.00	0.00	
15,800.0	95.36	208.54	12,444.7	-2,921.9	-1,797.5	3,429.6	0.00	0.00	
15,900.0	95.36	208.54	12,435.4	-3,009.4	-1,845.1	3,529.1	0.00	0.00	
16,000.0	95.36	208.54	12,426.1	-3,096.8	-1,892.6	3,628.6	0.00	0.00	
16,100.0	95.36	208.54	12,416.7	-3,184.3	-1,940.2	3,728.1	0.00	0.00	
16,200.0	95.36	208.54	12,407.4	-3,271.8	-1,987.7	3,827.6	0.00	0.00	
16,300.0	95.36	208.54	12,398.0	-3,359.2	-2,035.3	3,927.2	0.00	0.00	
16,400.0	95.36	208.54	12,388.7	-3,446.7	-2,082.9	4,026.7	0.00	0.00	
16,500.0	95.36	208.54	12,379.3	-3,534.2	-2,130.4	4,126.2	0.00	0.00	
16,600.0	95.36	208.54	12,370.0	-3,621.6	-2,178.0	4,225.7	0.00	0.00	
16,700.0	95.36	208.54	12,360.6	-3,709.1	-2,225.6	4,325.2	0.00	0.00	
16,800.0	95.36	208.54	12,351.3	-3,796.6	-2,273.1	4,424.8	0.00	0.00	
16,900.0	95.36	208.54	12,342.0	-3,884.0	-2,320.7	4,524.3	0.00	0.00	
17,000.0	95.36	208.54	12,332.6	-3,971.5	-2,368.3	4,623.8	0.00	0.00	
17,100.0	95.36	208.54	12,323.3	-4,059.0	-2,415.8	4,723.3	0.00	0.00	
17,200.0	95.36	208.54	12,313.9	-4,146.4	-2,463.4	4,822.8	0.00	0.00	
17,300.0	95.36	208.54	12,304.6	-4,233.9	-2,511.0	4,922.3	0.00	0.00	
17,400.0	95.36	208.54	12,295.2	-4,321.4	-2,558.5	5,021.9	0.00	0.00	
17,500.0	95.36	208.54	12,285.9	-4,408.8	-2,606.1	5,121.4	0.00	0.00	
17,600.0	95.36	208.54	12,276.5	-4,496.3	-2,653.7	5,220.9	0.00	0.00	
17,700.0	95.36	208.54	12,267.2	-4,583.8	-2,701.2	5,320.4	0.00	0.00	
17,800.0	95.36	208.54	12,257.9	-4,671.2	-2,748.8	5,419.9	0.00	0.00	
17,900.0	95.36	208.54	12,248.5	-4,758.7	-2,796.4	5,519.5	0.00	0.00	
18,000.0	95.36	208.54	12,239.2	-4,846.2	-2,843.9	5,619.0	0.00	0.00	
18,100.0	95.36	208.54	12,229.8	-4,933.6	-2,891.5	5,718.5	0.00	0.00	
18,200.0	95.36	208.54	12,220.5	-5,021.1	-2,939.1	5,818.0	0.00	0.00	
18,300.0	95.36	208.54	12,211.1	-5,108.6	-2,986.6	5,917.5	0.00	0.00	
18,400.0	95.36	208.54	12,201.8	-5,196.0	-3,034.2	6,017.0	0.00	0.00	
18,500.0	95.36	208.54	12,192.4	-5,283.5	-3,081.7	6,116.6	0.00	0.00	
18,536.9	95.36	208.54	12,189.0	-5,315.8	-3,099.3	6,153.3	0.00	0.00	TD at 18536.9 - DHS8B-09 O04 PBHL

Planning Report

Database:	USA EDM 5000 Multi Users DB	Local Co-ordinate Reference:	Well DHS8B-09 O04 696
Company:	EnCana Oil & Gas (USA) Inc	TVD Reference:	KBE @ 6044.0ft (Original Well Elev)
Project:	North Piceance	MD Reference:	KBE @ 6044.0ft (Original Well Elev)
Site:	O04 696 (3rd)	North Reference:	True
Well:	DHS8B-09 O04 696	Survey Calculation Method:	Minimum Curvature
Wellbore:	HZ		
Design:	Plan #1		

Targets									
Target Name									
- hit/miss target	Dip Angle	Dip Dir.	TVD	+N/-S	+E/-W	Northing	Easting	Latitude	Longitude
- Shape	(°)	(°)	(ft)	(ft)	(ft)	(ft)	(ft)		
DHS8B-09 O04 LP	0.00	0.00	12,690.0	-626.3	-549.1	1,635,460.33	2,264,213.74	39° 32' 56.76 N	108° 6' 34.78 W
- plan hits target center									
- Point									
DHS8B-09 O04 PBHL	0.00	0.00	12,189.0	-5,315.8	-3,099.3	1,630,845.97	2,261,529.99	39° 32' 10.41 N	108° 7' 7.33 W
- plan hits target center									
- Point									

Formations						
Measured Depth	Vertical Depth	Name	Lithology	Dip	Dip Direction	
(ft)	(ft)			(°)	(°)	
4,692.0	4,692.0	Williams Fork		0.00		
4,732.0	4,732.0	Top gas		0.00		
8,259.0	8,259.0	Rollins		0.00		
10,547.0	10,546.0	Mancos Marker		0.00		
11,977.6	11,973.0	Niobrara		0.00		
13,041.0	12,690.0	NioLamSilt		0.00		

Plan Annotations					
Measured Depth	Vertical Depth	Local Coordinates			
(ft)	(ft)	+N/-S	+E/-W	Comment	
(ft)	(ft)	(ft)	(ft)		
10,000.0	10,000.0	0.0	0.0	KOP @ 10,000'	
10,201.9	10,201.7	1.9	-6.8	EOB; Inc=4°	
11,994.8	11,990.1	36.1	-128.4	Start 8° Build @ 11,994' MD	
13,175.4	12,690.0	-626.3	-549.1	Landing Pt @ 12,690' TVD; 95.36°	
18,536.9	12,189.0	-5,315.8	-3,099.3	TD at 18536.9	