

G.C.
1912 Brass Cap,
1.5' High, Sign
Lat: 39.564417°
Long: 108.120500°

Sec. 36 T6S, R96W, 6th P.M.

Sec. 31 Encana OIL & GAS (USA) INC.

Well location, N. PARACHUTE DHS08B-9 004 696 (SURFACE LOCATION), located as shown in Lot 9 of Section 4, T6S, R96W, 6th P.M., Garfield County, Colorado.

T5S L1

T6S

S 1/4 Cor. Sec. 36,
1912 Brass Cap, 1.5'
High, Conduit
Lat: 39.564417°
Long: 108.117936°

P.C. 1912 Brass Cap,
1.0' High, Conduit,
Pile of Stones, Sign
Lat: 39.564419°
Long: 108.110489°

R 96 W

R 95 W

SE Cor Sec. 36,
1982 Private Brass
Cap, 0.6' High, Sign
Lat: 39.564417°
Long: 108.108631°

N89°52'47"W - 3364.89' (Meas.)

C.C. 1912 Brass
Cap, 0.2' High,
Pile of Stones
Lat: 39.563064°
Long: 108.108631°

1912 Brass Cap
2.0' High
Lat: 39.563044°
Long: 108.096700°

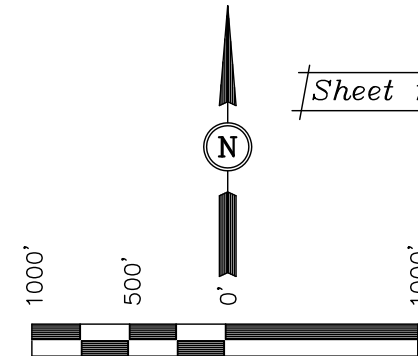
BASIS OF ELEVATION

SPOT ELEVATION AT THE NORTHWEST CORNER OF SECTION 30, T5S, R95W, 6th P.M. TAKEN FROM THE FORKED GULCH QUADRANGLE, COLORADO, GARFIELD COUNTY, 7.5 MINUTE SERIES (TOPOGRAPHICAL MAP) PUBLISHED BY THE UNITED STATES DEPARTMENT OF THE INTERIOR, GEOLOGICAL SURVEY. SAID ELEVATION IS MARKED AS BEING 5966 FEET.

BASIS OF BEARINGS

BASIS OF BEARINGS IS A G.P.S. OBSERVATION.

Sheet 1tt of 11



SCALE
CERTIFICATE

THIS IS TO CERTIFY THAT THE ABOVE PLAT WAS PREPARED AND LOCATION AS SHOWN WAS STAKED ON THE GROUND FROM FIELD NOTES OF ACTUAL SURVEYS MADE BY ME OR UNDER MY SUPERVISION AND THAT THE SAME ARE TRUE AND CORRECT TO THE BEST OF MY KNOWLEDGE AND BELIEF.

REGISTERED LAND SURVEYOR
REGISTRATION NO. E17492
STATE OF COLORADO

UINTAH ENGINEERING & LAND SURVEYING
85 SOUTH 200 EAST - VERNAL, UTAH 84078
(435) 789-1017

1" = 1000'

DATE SURVEYED:
05-27-11

DATE DRAWN:
07-26-11

PARTY

B.B. D.W. D.R.B.

REFERENCES

G.L.O. PLAT

WEATHER

COLD

FILE

Encana OIL & GAS (USA) INC.

LEGEND:

└─┘ = 90° SYMBOL

● = PROPOSED WELL HEAD.

▲ = SECTION CORNERS LOCATED.

PDOP = 2.3

NAD 83 (START OF PRODUCING INTERVAL)

LATITUDE = 39°32'56.76" (39.549100)
LONGITUDE = 108°06'34.78" (108.109661)

NAD 27 (START OF PRODUCING INTERVAL)

LATITUDE = 39°32'56.84" (39.549122)
LONGITUDE = 108°06'32.50" (108.109028)

NAD 83 (SURFACE LOCATION)

LATITUDE = 39°33'02.95" (39.550819)
LONGITUDE = 108°06'27.77" (108.107714)

NAD 27 (SURFACE LOCATION)

LATITUDE = 39°33'03.03" (39.550842)
LONGITUDE = 108°06'25.49" (108.107081)

N00°01'46"W - 3622.72' (Meas.)

LINE TABLE		
LINE	BEARING	LENGTH
L1	N89°55'56"W	722.76'
L2	N89°59'23"W	524.22'
L3	N00°02'45"E	493.26'
L4	N89°56'20"W	319.44'

NOTE:
SEE SHEET 7A FOR EXISTING
IMPROVEMENT WITHIN 400' OF THE
PROPOSED WELL HEAD.

Lot 4

Lot 3

Lot 6

Lot 7

NOTE:
THE PROPOSED BOTTOM HOLE IS LOCATED IN
LOT 11 OF SECTION 9, T6S, R96W, 6th P.M. AT
A DISTANCE OF 1671' FSL 697' FWL. IT BEARS
S28°32'15"W 5339.70' FROM THE START OF
PRODUCING INTERVAL.

2000 Private Alum.
Cap, 3/4" Rebar, 1.0'
High, Pile of Stones
Lat: 39.554475°
Long: 108.120492°

N. PARACHUTE
DHS08B-9 004 696

Elev. Ungraded Ground = 6014.1'

Elev. Graded Ground = 6010.9'

N. PARACHUTE
DHS08B-9 004 696
START OF PRODUCING
INTERVAL

Lot 12

W.C. 1912 Brass
Cap 1.5' High
Lat: 39.546711°
Long: 108.110881°

Lot 11

1912 Brass Cap 0.4'
High, E-W Fenceline,
Pile of Stones
Lat: 39.546719°
Long: 108.121375°

Lot 13

871'

1498'

Lot 14

1912 Brass Cap 90°00'
1.5' High (G.L.O.)
Lat: 39.546703°
Long: 108.102369°

True Position

N89°55'10"W - 2640.94' (Meas.)

N89°56'20"W - 2719.79' (Meas.)

5964.42' (G.L.O.)

T6S, R96W, 6th P.M.

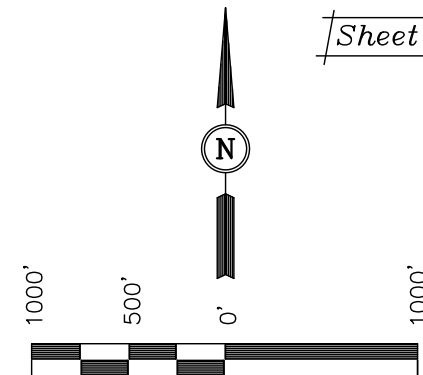
Encana OIL & GAS (USA) INC.

Well location, N. PARACHUTE DHS08B-9 004 696 (TARGET BOTTOM HOLE), located as shown in Lot 11 of Section 9, T6S, R96W, 6th P.M., Garfield County, Colorado.

BASIS OF ELEVATION

SPOT ELEVATION AT THE NORTHWEST CORNER OF SECTION 30, T5S, R95W, 6th P.M. TAKEN FROM THE FORKED GULCH QUADRANGLE, COLORADO, GARFIELD COUNTY, 7.5 MINUTE SERIES (TOPOGRAPHICAL MAP) PUBLISHED BY THE UNITED STATES DEPARTMENT OF THE INTERIOR, GEOLOGICAL SURVEY. SAID ELEVATION IS MARKED AS BEING 5966 FEET.

Sheet 1uu of 11



SCALE
CERTIFICATE

THIS IS TO CERTIFY THAT THE ABOVE PLAT WAS PREPARED AND LOCATION AS SHOWN WAS STAKED ON THE GROUND FROM FIELD NOTES OF ACTUAL SURVEYS MADE BY ME OR UNDER MY SUPERVISION AND THAT THE SAME ARE TRUE AND CORRECT TO THE BEST OF MY KNOWLEDGE AND BELIEF.

REGISTERED LAND SURVEYOR
REGISTRATION NO. 17492
STATE OF COLORADO
07-22-2011

UINTAH ENGINEERING & LAND SURVEYING
85 SOUTH 200 EAST - VERNAL, UTAH 84078
(435) 789-1017

1" = 1000'

DATE SURVEYED:
05-27-11

DATE DRAWN:
07-26-11

PARTY

B.B. D.W. D.R.B.

REFERENCES

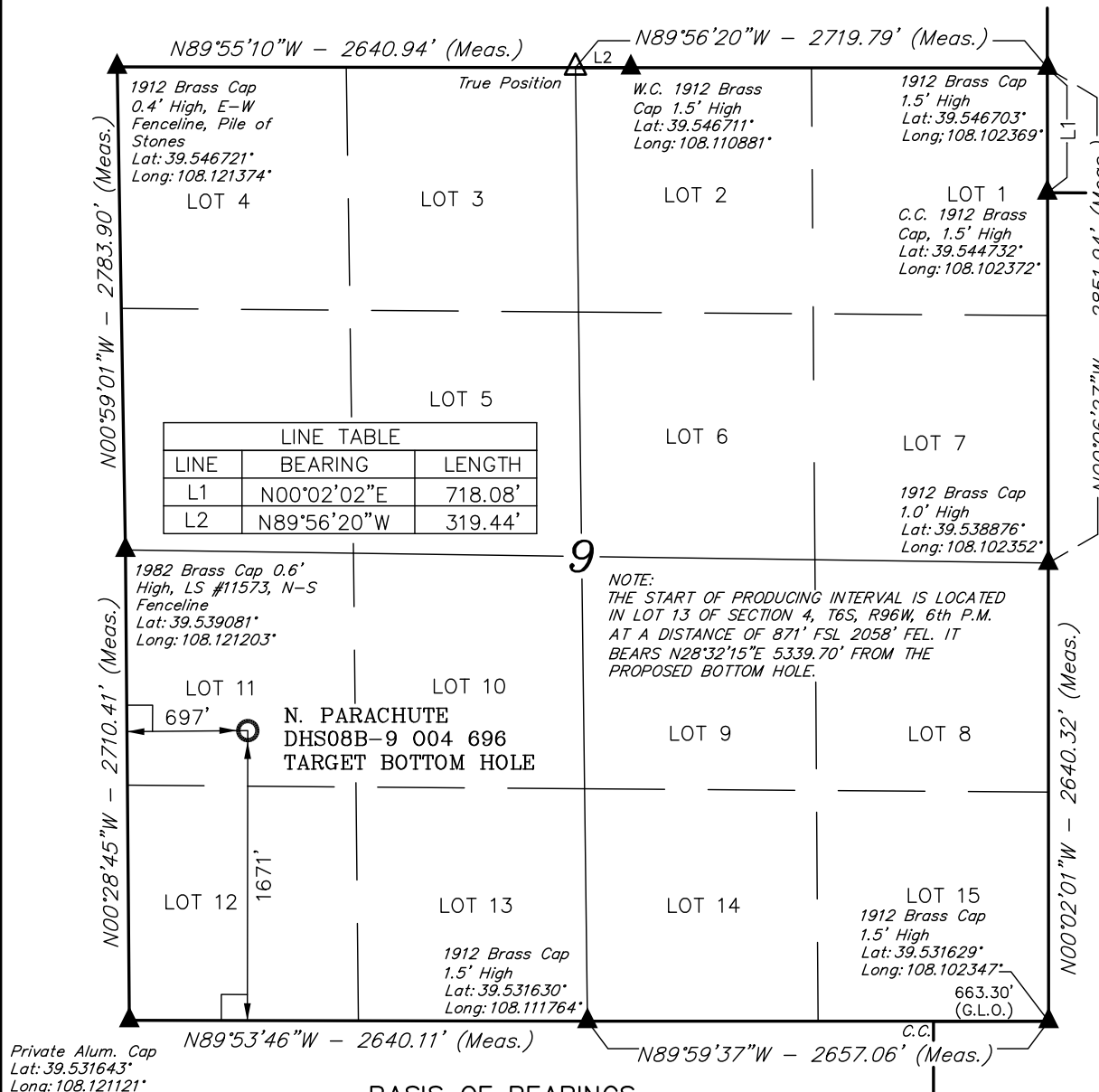
G.L.O. PLAT

WEATHER

COLD

FILE

Encana OIL & GAS (USA) INC.



BASIS OF BEARINGS

BASIS OF BEARINGS IS A G.P.S. OBSERVATION.

LEGEND:

└─┘ = 90° SYMBOL

● = PROPOSED WELL HEAD.

▲ = SECTION CORNERS LOCATED.

NAD 83 (TARGET BOTTOM HOLE)

LATITUDE = 39°32'10.41" (39.536225)
LONGITUDE = 108°07'07.33" (108.118703)

NAD 27 (TARGET BOTTOM HOLE)

LATITUDE = 39°32'10.49" (39.536247)
LONGITUDE = 108°07'05.05" (108.118069)