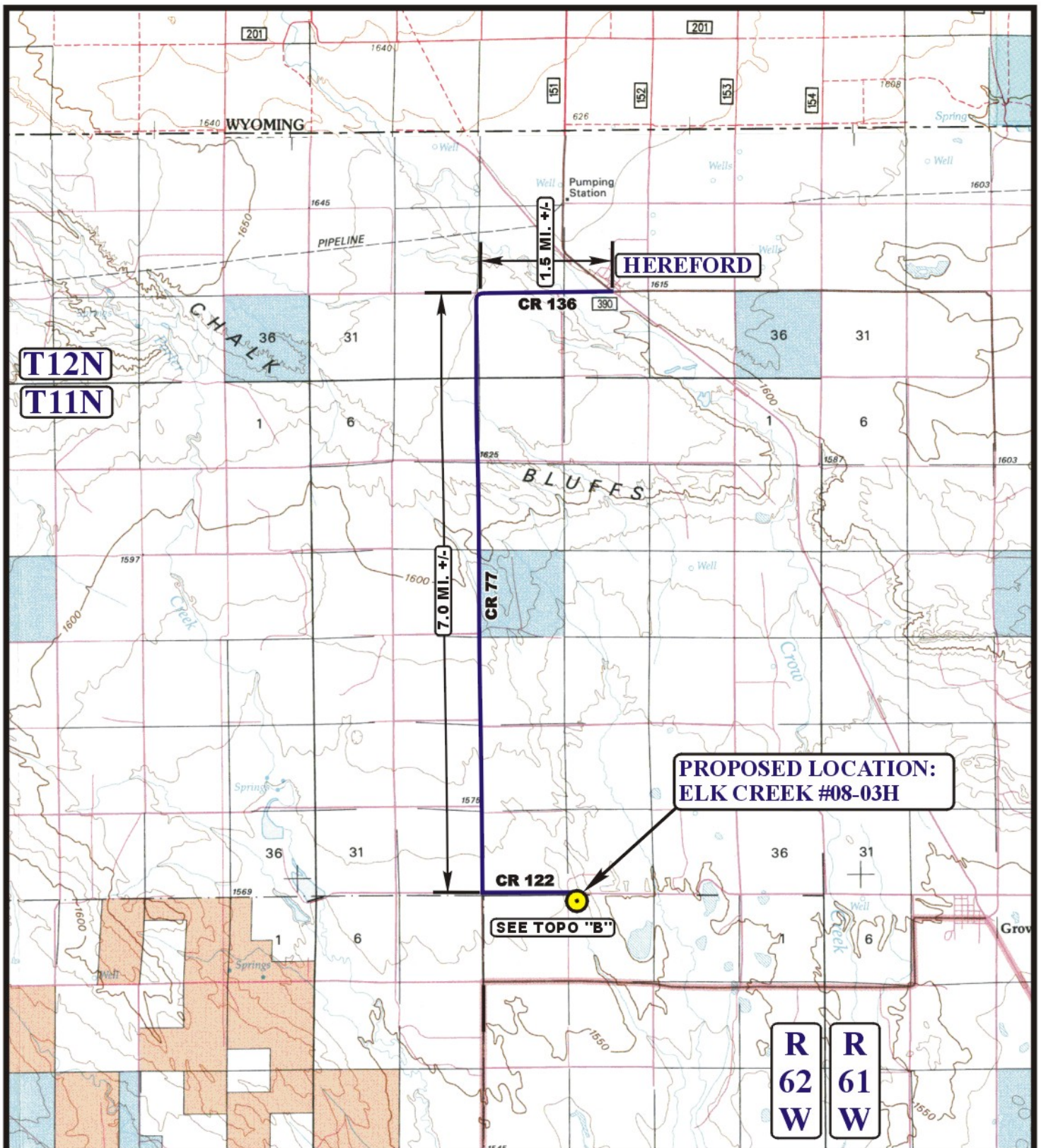


EOG RESOURCES, INC.  
ELK CREEK #08-03H  
SECTION 3, T10N, R62W, 6th P.M.

PROCEED IN A WESTERLY DIRECTION FROM HEREFORD, COLORADO ON COUNTY ROAD 136 APPROXIMATELY 1.5 MILES TO THE JUNCTION OF THIS ROAD AND COUNTY ROAD 77 TO THE SOUTH; TURN LEFT AND PROCEED IN A SOUTHERLY DIRECTION APPROXIMATELY 7.0 MILES TO THE JUNCTION OF THIS ROAD AND COUNTY ROAD 122 TO THE EAST; TURN LEFT AND PROCEED IN AN EASTERLY DIRECTION APPROXIMATELY 1.1 MILES TO THE BEGINNING OF THE PROPOSED ACCESS ROAD TO THE SOUTH; FOLLOW ROAD FLAGS IN A SOUTHERLY DIRECTION APPROXIMATELY 260' TO THE PROPOSED LOCATION.

TOTAL DISTANCE FROM HEREFORD, COLORADO TO THE PROPOSED LOCATION IS APPROXIMATELY 9.6 MILES.



# LEGEND:

PROPOSED LOCATION



EOG RESOURCES, INC.

ELK CREEK #08-03H  
SECTION 3, T10N, R62W, 6th P.M.  
501' FNL 501' FWL



**Uintah Engineering & Land Surveying**  
85 South 200 East Vernal, Utah 84078  
(435) 789-1017 \* FAX (435) 789-1813

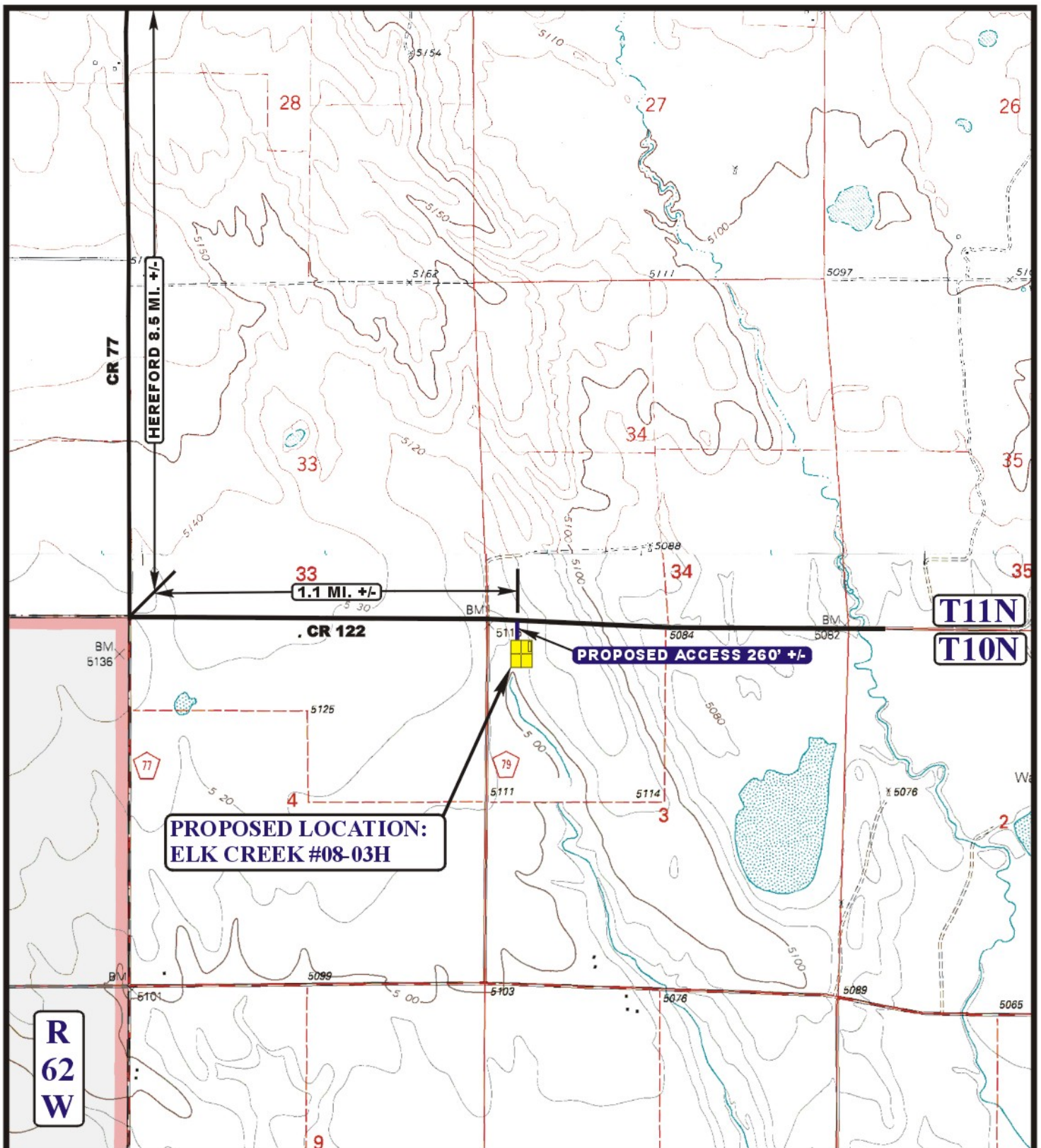
**ACCESS ROAD  
MAP**

**01 13 11**  
MONTH DAY YEAR

SCALE: 1: 100,000 DRAWN BY: S.F. REVISED: 00-00-00







# LEGEND:

EXISTING ROAD  
PROPOSED ACCESS ROAD

EOG RESOURCES, INC.

ELK CREEK #08-03H  
SECTION 3, T10N, R62W, 6th P.M.  
501' FNL 501' FWL



Uintah Engineering & Land Surveying  
85 South 200 East Vernal, Utah 84078  
(435) 789-1017 \* FAX (435) 789-1813



ACCESS ROAD  
MAP

01 13 11  
MONTH DAY YEAR

B  
TOPO

SCALE: 1" = 2000' DRAWN BY: S.F. REVISED: 00-00-00