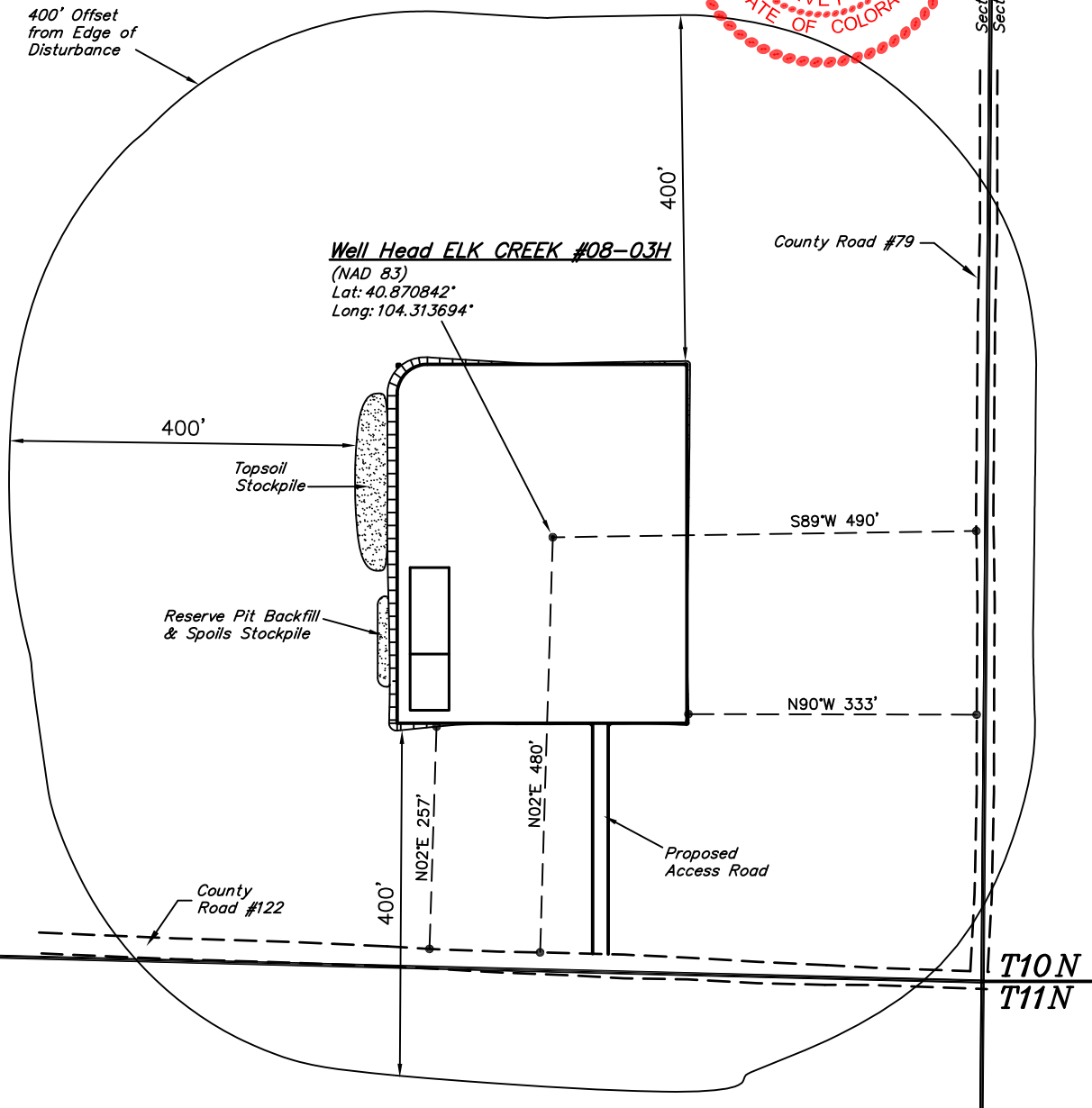
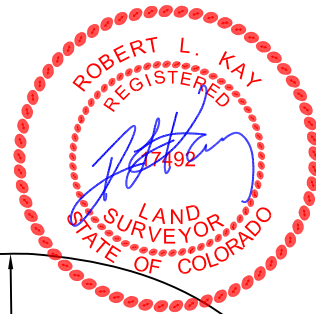




EOG RESOURCES, INC.
ADDENDUM TO LEGAL PLAT FOR
ELK CREEK #08-03H
SECTION 3, T10N, R62W, 6th P.M.
501' FNL 501' FWL

SCALE: 1" = 200'
DATE: 01-06-11
DRAWN BY: K.O.



EOG RESOURCES, INC.

CONSTRUCTION LAYOUT FOR

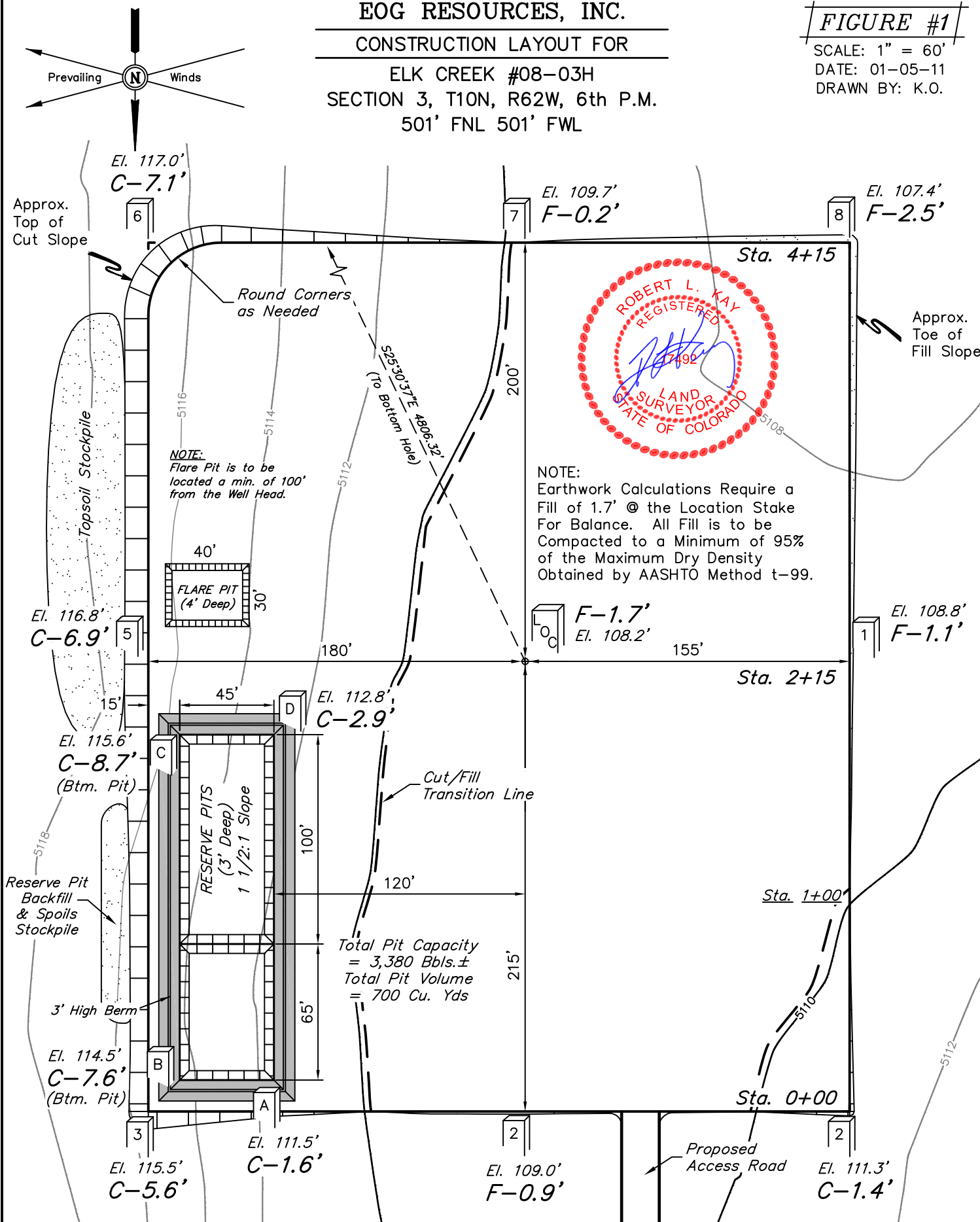
ELK CREEK #08-03H
SECTION 3, T10N, R62W, 6th P.M.
501' FNL 501' FWL

FIGURE #1

SCALE: 1" = 60'

DATE: 01-05-11

DRAWN BY: K.O.



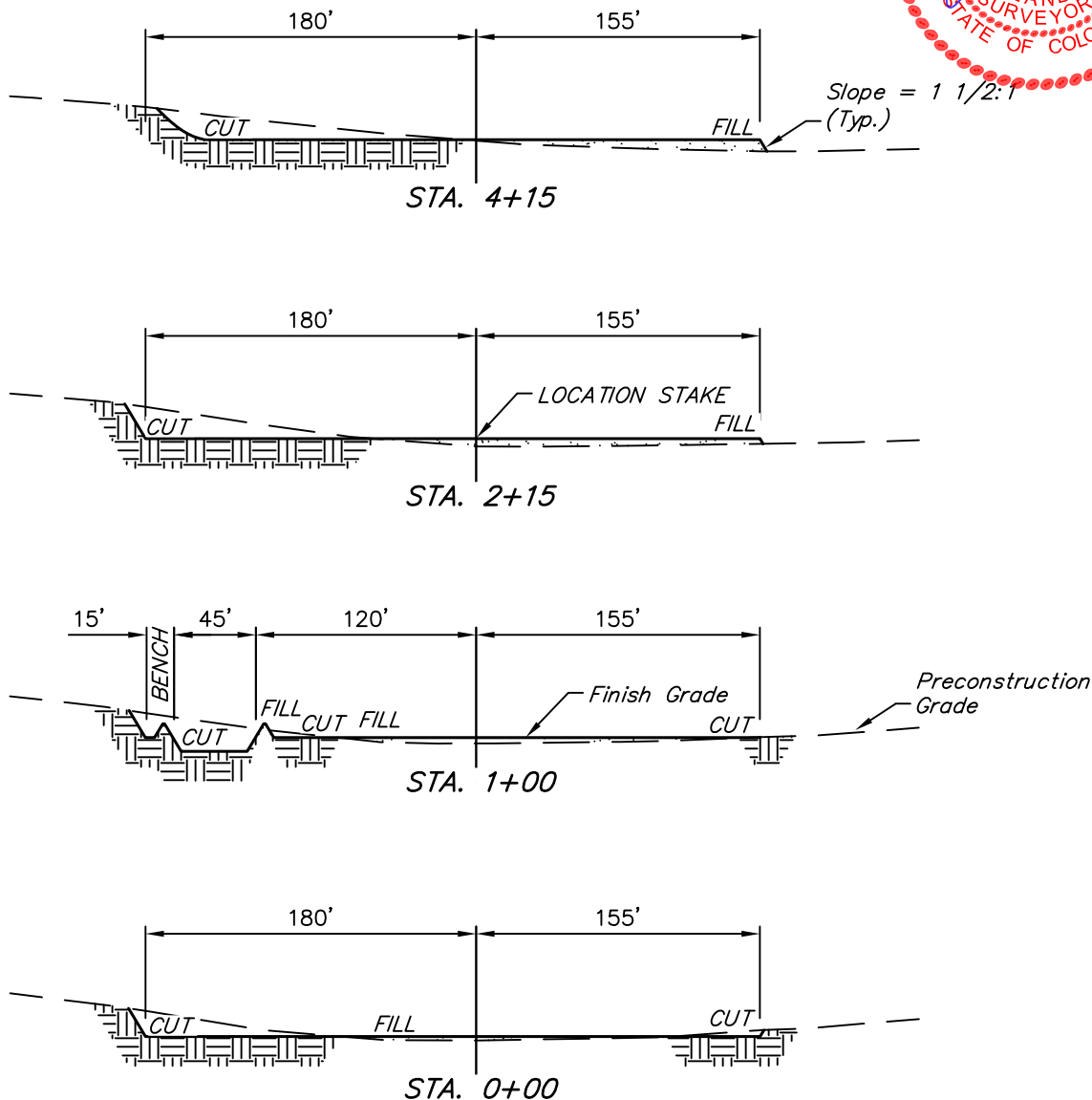
Elev. Ungraded Ground At Loc. Stake = 5108.2'
FINISHED GRADE ELEV. AT LOC. STAKE = 5109.9'

UINTAH ENGINEERING & LAND SURVEYING
85 So. 200 East * Vernal, Utah 84078 * (435) 789-1017

1" = 40'
X-Section
Scale
1" = 100'
DATE: 01-06-11
DRAWN BY: K.O.

EOG RESOURCES, INC.
CONSTRUCTION LAYOUT CROSS SECTIONS FOR
ELK CREEK #08-03H
SECTION 3, T10N, R62W, 6th P.M.
501' FNL 501' FWL

FIGURE #2



APPROXIMATE ACREAGES
WELL SITE DISTURBANCE = ± 3.530 ACRES
ACCESS ROAD DISTURBANCE = ± 0.179 ACRES
TOTAL = ± 3.709 ACRES

* NOTE:
FILL QUANTITY INCLUDES
5% FOR COMPACTION

APPROXIMATE YARDAGES

(6") Topsoil Stripping = 2,740 Cu. Yds.
Remaining Location = 5,910 Cu. Yds.
TOTAL CUT = 8,650 CU.YDS.
FILL = 5,560 CU.YDS.

EXCESS MATERIAL = 3,090 Cu. Yds.
Topsoil & Pit Backfill = 3,090 Cu. Yds.
(1/2 Pit Vol.)
EXCESS UNBALANCE = 0 Cu. Yds.
(After Interim Rehabilitation)

UINTAH ENGINEERING & LAND SURVEYING
85 So. 200 East * Vernal, Utah 84078 * (435) 789-1017

EOG RESOURCES, INC.

TYPICAL RIG LAYOUT FOR

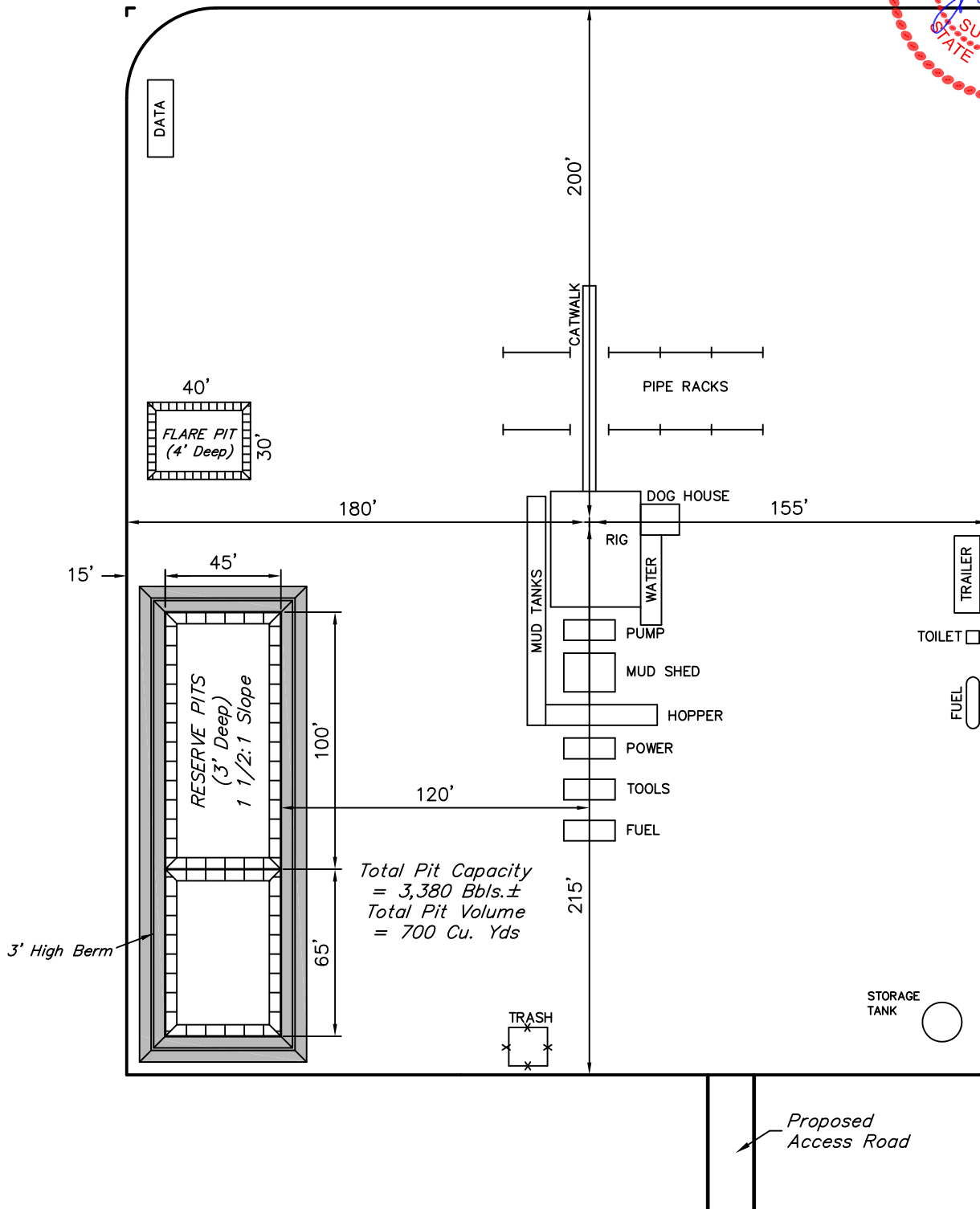
ELK CREEK #08-03H
SECTION 3, T10N, R62W, 6th P.M.
501' FNL 501' FWL

FIGURE #3

SCALE: 1" = 60'

DATE: 01-06-11

DRAWN BY: K.O.



UINTAH ENGINEERING & LAND SURVEYING

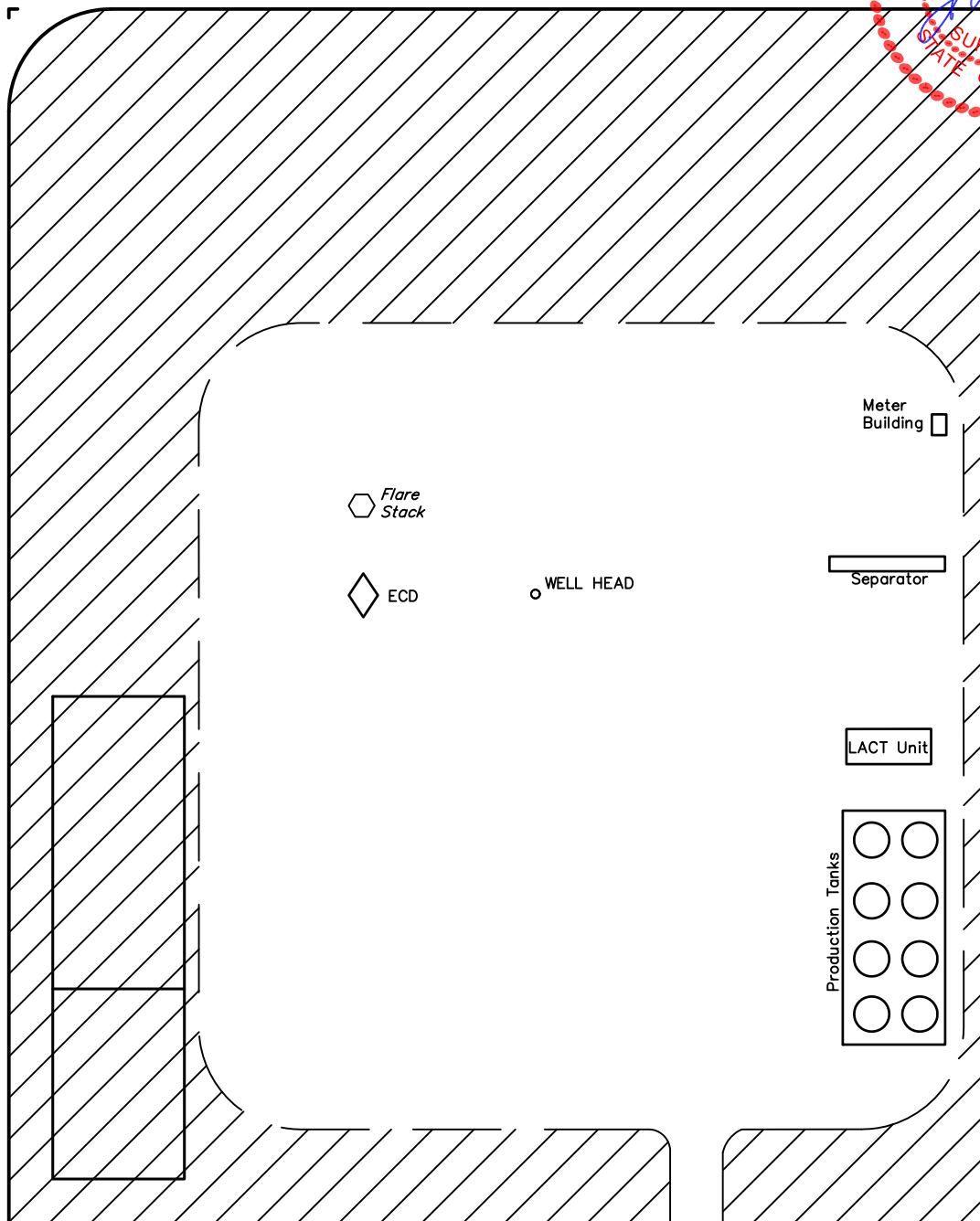
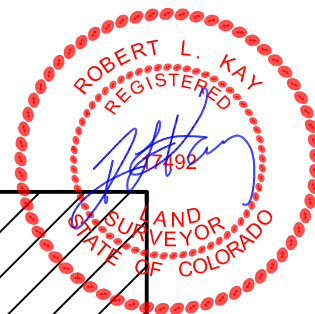
85 So. 200 East * Vernal, Utah 84078 * (435) 789-1017



EOG RESOURCES, INC.
RECLAMATION DIAGRAM FOR
ELK CREEK #08-03H
SECTION 3, T10N, R62W, 6th P.M.
501' FNL 501' FWL

FIGURE #4

SCALE: 1" = 60'
DATE: 01-06-11
DRAWN BY: K.O.



APPROXIMATE ACREAGES
UN-RECLAIMED = ± 1.541 ACRES



RECLAIMED AREA

UINTAH ENGINEERING & LAND SURVEYING
85 So. 200 East * Vernal, Utah 84078 * (435) 789-1017

