

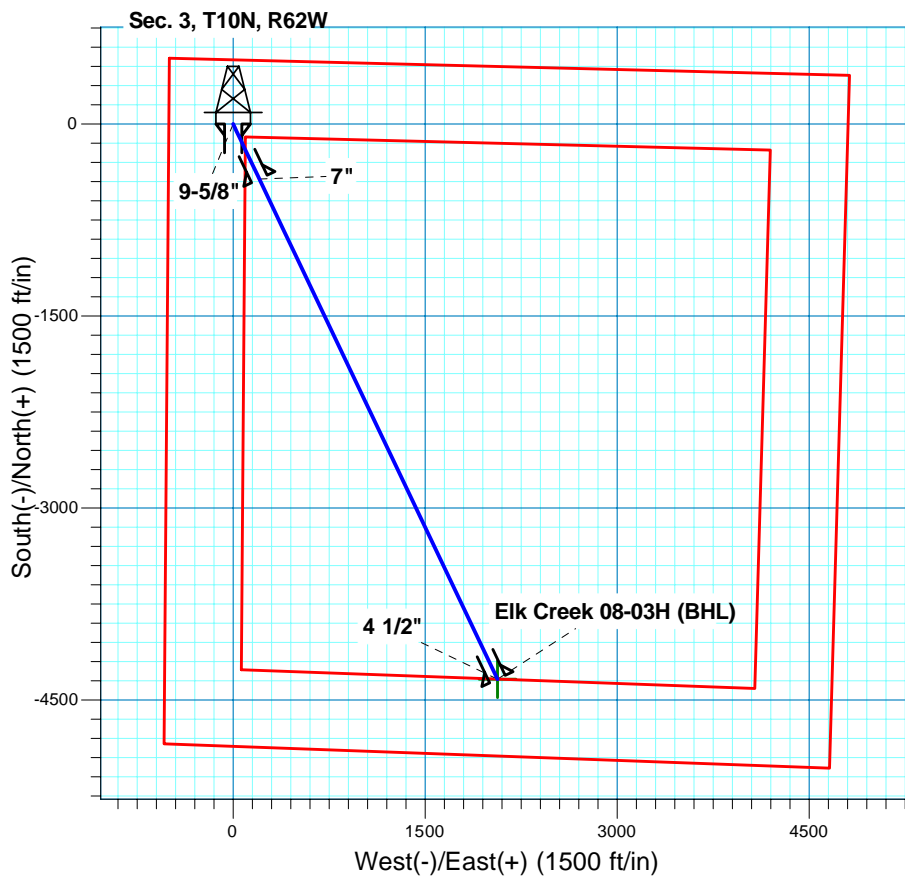
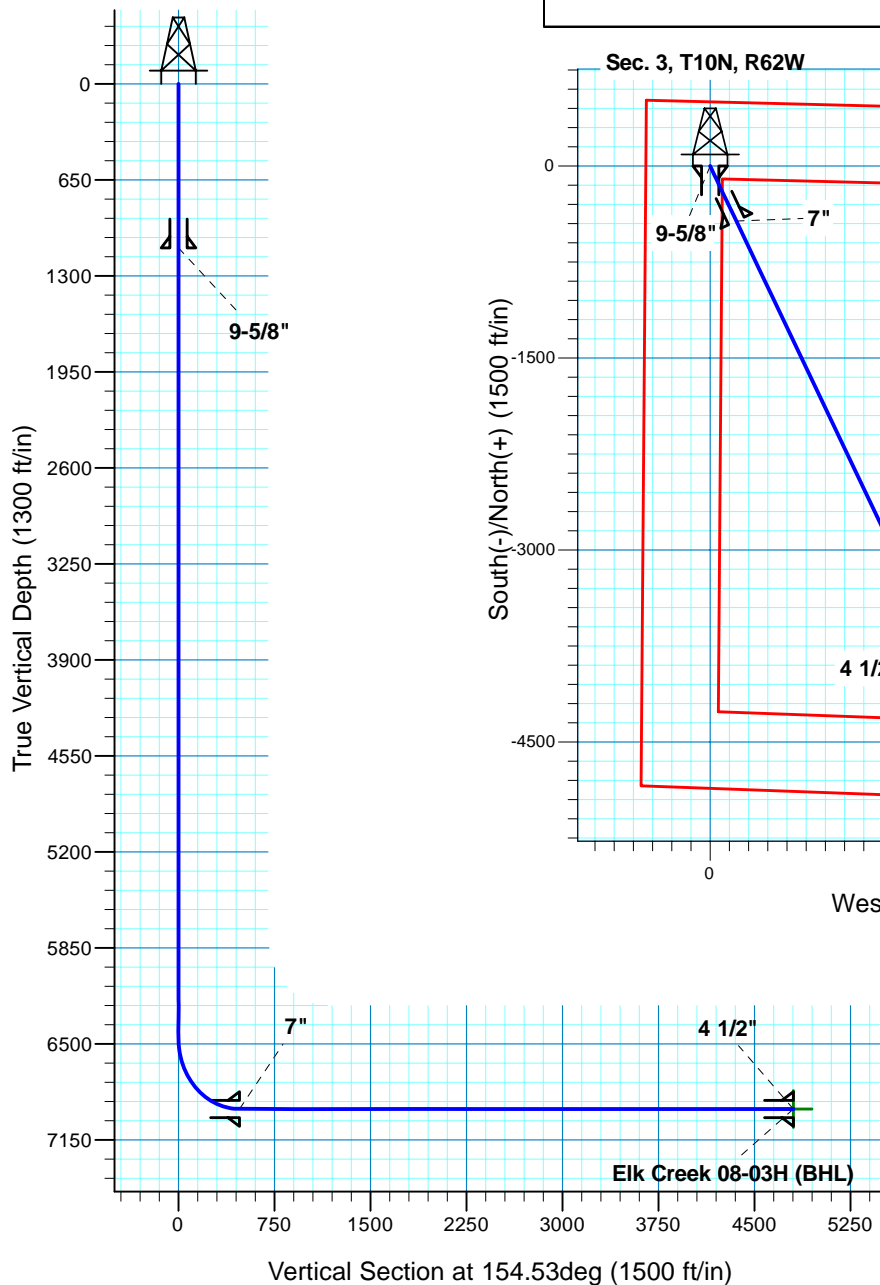
# Elk Creek 08-03H

## Section 3 T10N R62W

### Weld County, CO

#### Surface Location

NAD 1927 (NADCON CONUS) Colorado North 501  
 Ground Elevation: 5110.00 RIG @ 5132.00ft (TBD)  
 Northing Easting Latitude Longitude  
 562290.07 2328243.92 40° 52' 15.089 N 104° 18' 47.459 W



**T M**  
 Azimuths to True North  
 Magnetic North: 8.65°  
 Magnetic Field  
 Strength: 53472.1nT  
 Dip Angle: 67.52°  
 Date: 3/2/2011  
 Model: IGRF200510

Project: DJ - Hereford Ranch  
 Site: Elk Creek 08-03H  
 Well: Elk Creek 08-03H  
 Plan: APD Directional Plan

#### SECTION DETAILS

Sec	MD	Inc	Azi	TVD	+N/-S	+E/-W	DLeg	TFace	VSec	Target
1	0.00	0.00	0.00	0.00	0.00	0.00	0.00	0.00	0.00	
2	6462.53	0.00	0.00	6462.53	0.00	0.00	0.00	0.00	0.00	
3	7212.54	90.00	154.53	6940.00	-431.08	205.30	12.00	154.53	477.47	
4	11540.43	90.00	154.53	6940.00	-4338.48	2066.17	0.00	0.00	4805.36	Elk Creek 08-03H (BHL)

#### TARGET DETAILS

Name	TVD	+N/-S	+E/-W	Northing	Easting	Latitude	Longitude	Shape
Elk Creek 08-03H (BHL)	6940.00	-4338.48	2066.17	557979.64	2330367.96	40° 51' 32.220 N	104° 18' 20.570 W	Point

# **Denver Division- Colorado**

**DJ - Hereford Ranch**

**Elk Creek 08-03H**

**Elk Creek 08-03H**

**Original Wellbore**

**Plan: APD Directional Plan**

## **Standard Planning Report**

**02 March, 2011**

# EOG Resources Inc

## Planning Report

<b>Database:</b>	EDM	<b>Local Co-ordinate Reference:</b>	Site Elk Creek 08-03H
<b>Company:</b>	Denver Division- Colorado	<b>TVD Reference:</b>	RIG @ 5132.00ft (TBD)
<b>Project:</b>	DJ - Hereford Ranch	<b>MD Reference:</b>	RIG @ 5132.00ft (TBD)
<b>Site:</b>	Elk Creek 08-03H	<b>North Reference:</b>	True
<b>Well:</b>	Elk Creek 08-03H	<b>Survey Calculation Method:</b>	Minimum Curvature
<b>Wellbore:</b>	Original Wellbore		
<b>Design:</b>	APD Directional Plan		

<b>Project</b>	DJ - Hereford Ranch, Weld County		
<b>Map System:</b>	US State Plane 1927 (Exact solution)	<b>System Datum:</b>	Mean Sea Level
<b>Geo Datum:</b>	NAD 1927 (NADCON CONUS)		
<b>Map Zone:</b>	Colorado North 501		

<b>Site</b>	Elk Creek 08-03H		
<b>Site Position:</b>		<b>Northing:</b>	562,290.07 ft
<b>From:</b>	Lat/Long	<b>Easting:</b>	2,328,243.92 ft
<b>Position Uncertainty:</b>	0.00 ft	<b>Slot Radius:</b>	"
		<b>Latitude:</b>	40° 52' 15.089 N
		<b>Longitude:</b>	104° 18' 47.459 W
		<b>Grid Convergence:</b>	0.77 deg

<b>Well</b>	Elk Creek 08-03H		
<b>Well Position</b>	<b>+N/-S</b>	0.00 ft	<b>Northing:</b> 562,290.07 ft
	<b>+E/-W</b>	0.00 ft	<b>Easting:</b> 2,328,243.92 ft
<b>Position Uncertainty</b>	0.00 ft	<b>Wellhead Elevation:</b>	ft
		<b>Latitude:</b>	40° 52' 15.089 N
		<b>Longitude:</b>	104° 18' 47.459 W
		<b>Ground Level:</b>	5,110.00 ft

<b>Wellbore</b>	Original Wellbore				
<b>Magnetics</b>	<b>Model Name</b>	<b>Sample Date</b>	<b>Declination (deg)</b>	<b>Dip Angle (deg)</b>	<b>Field Strength (nT)</b>
	IGRF200510	3/2/2011	8.65	67.52	53,472

<b>Design</b>	APD Directional Plan			
<b>Audit Notes:</b>				
<b>Version:</b>	<b>Phase:</b>	PROTOTYPE	<b>Tie On Depth:</b>	0.00
<b>Vertical Section:</b>	<b>Depth From (TVD) (ft)</b>	<b>+N/-S (ft)</b>	<b>+E/-W (ft)</b>	<b>Direction (deg)</b>
	0.00	0.00	0.00	154.53

<b>Plan Sections</b>										
Measured Depth (ft)	Inclination (deg)	Azimuth (deg)	Vertical Depth (ft)	+N/-S (ft)	+E/-W (ft)	Dogleg Rate (?/100ft)	Build Rate (?/100ft)	Turn Rate (?/100ft)	TFO (deg)	Target
0.00	0.00	0.00	0.00	0.00	0.00	0.00	0.00	0.00	0.00	
6,462.53	0.00	0.00	6,462.53	0.00	0.00	0.00	0.00	0.00	0.00	
7,212.54	90.00	154.53	6,940.00	-431.08	205.30	12.00	12.00	0.00	154.53	
11,540.43	90.00	154.53	6,940.00	-4,338.48	2,066.17	0.00	0.00	0.00	0.00	Elk Creek 08-03H (I

# EOG Resources Inc

## Planning Report

<b>Database:</b>	EDM	<b>Local Co-ordinate Reference:</b>	Site Elk Creek 08-03H
<b>Company:</b>	Denver Division- Colorado	<b>TVD Reference:</b>	RIG @ 5132.00ft (TBD)
<b>Project:</b>	DJ - Hereford Ranch	<b>MD Reference:</b>	RIG @ 5132.00ft (TBD)
<b>Site:</b>	Elk Creek 08-03H	<b>North Reference:</b>	True
<b>Well:</b>	Elk Creek 08-03H	<b>Survey Calculation Method:</b>	Minimum Curvature
<b>Wellbore:</b>	Original Wellbore		
<b>Design:</b>	APD Directional Plan		

Planned Survey									
Measured Depth (ft)	Inclination (deg)	Azimuth (deg)	Vertical Depth (ft)	+N/-S (ft)	+E/-W (ft)	Vertical Section (ft)	Dogleg Rate (?/100ft)	Build Rate (?/100ft)	Turn Rate (?/100ft)
0.00	0.00	0.00	0.00	0.00	0.00	0.00	0.00	0.00	0.00
100.00	0.00	0.00	100.00	0.00	0.00	0.00	0.00	0.00	0.00
200.00	0.00	0.00	200.00	0.00	0.00	0.00	0.00	0.00	0.00
300.00	0.00	0.00	300.00	0.00	0.00	0.00	0.00	0.00	0.00
400.00	0.00	0.00	400.00	0.00	0.00	0.00	0.00	0.00	0.00
500.00	0.00	0.00	500.00	0.00	0.00	0.00	0.00	0.00	0.00
600.00	0.00	0.00	600.00	0.00	0.00	0.00	0.00	0.00	0.00
700.00	0.00	0.00	700.00	0.00	0.00	0.00	0.00	0.00	0.00
800.00	0.00	0.00	800.00	0.00	0.00	0.00	0.00	0.00	0.00
900.00	0.00	0.00	900.00	0.00	0.00	0.00	0.00	0.00	0.00
1,000.00	0.00	0.00	1,000.00	0.00	0.00	0.00	0.00	0.00	0.00
1,100.00	0.00	0.00	1,100.00	0.00	0.00	0.00	0.00	0.00	0.00
1,110.00	0.00	0.00	1,110.00	0.00	0.00	0.00	0.00	0.00	0.00
9-5/8"									
1,200.00	0.00	0.00	1,200.00	0.00	0.00	0.00	0.00	0.00	0.00
1,300.00	0.00	0.00	1,300.00	0.00	0.00	0.00	0.00	0.00	0.00
1,400.00	0.00	0.00	1,400.00	0.00	0.00	0.00	0.00	0.00	0.00
1,500.00	0.00	0.00	1,500.00	0.00	0.00	0.00	0.00	0.00	0.00
1,600.00	0.00	0.00	1,600.00	0.00	0.00	0.00	0.00	0.00	0.00
1,700.00	0.00	0.00	1,700.00	0.00	0.00	0.00	0.00	0.00	0.00
1,800.00	0.00	0.00	1,800.00	0.00	0.00	0.00	0.00	0.00	0.00
1,900.00	0.00	0.00	1,900.00	0.00	0.00	0.00	0.00	0.00	0.00
2,000.00	0.00	0.00	2,000.00	0.00	0.00	0.00	0.00	0.00	0.00
2,100.00	0.00	0.00	2,100.00	0.00	0.00	0.00	0.00	0.00	0.00
2,200.00	0.00	0.00	2,200.00	0.00	0.00	0.00	0.00	0.00	0.00
2,300.00	0.00	0.00	2,300.00	0.00	0.00	0.00	0.00	0.00	0.00
2,400.00	0.00	0.00	2,400.00	0.00	0.00	0.00	0.00	0.00	0.00
2,500.00	0.00	0.00	2,500.00	0.00	0.00	0.00	0.00	0.00	0.00
2,600.00	0.00	0.00	2,600.00	0.00	0.00	0.00	0.00	0.00	0.00
2,700.00	0.00	0.00	2,700.00	0.00	0.00	0.00	0.00	0.00	0.00
2,800.00	0.00	0.00	2,800.00	0.00	0.00	0.00	0.00	0.00	0.00
2,900.00	0.00	0.00	2,900.00	0.00	0.00	0.00	0.00	0.00	0.00
3,000.00	0.00	0.00	3,000.00	0.00	0.00	0.00	0.00	0.00	0.00
3,100.00	0.00	0.00	3,100.00	0.00	0.00	0.00	0.00	0.00	0.00
3,200.00	0.00	0.00	3,200.00	0.00	0.00	0.00	0.00	0.00	0.00
3,300.00	0.00	0.00	3,300.00	0.00	0.00	0.00	0.00	0.00	0.00
3,400.00	0.00	0.00	3,400.00	0.00	0.00	0.00	0.00	0.00	0.00
3,500.00	0.00	0.00	3,500.00	0.00	0.00	0.00	0.00	0.00	0.00
3,600.00	0.00	0.00	3,600.00	0.00	0.00	0.00	0.00	0.00	0.00
3,700.00	0.00	0.00	3,700.00	0.00	0.00	0.00	0.00	0.00	0.00
3,800.00	0.00	0.00	3,800.00	0.00	0.00	0.00	0.00	0.00	0.00
3,900.00	0.00	0.00	3,900.00	0.00	0.00	0.00	0.00	0.00	0.00
4,000.00	0.00	0.00	4,000.00	0.00	0.00	0.00	0.00	0.00	0.00
4,100.00	0.00	0.00	4,100.00	0.00	0.00	0.00	0.00	0.00	0.00
4,200.00	0.00	0.00	4,200.00	0.00	0.00	0.00	0.00	0.00	0.00
4,300.00	0.00	0.00	4,300.00	0.00	0.00	0.00	0.00	0.00	0.00
4,400.00	0.00	0.00	4,400.00	0.00	0.00	0.00	0.00	0.00	0.00
4,500.00	0.00	0.00	4,500.00	0.00	0.00	0.00	0.00	0.00	0.00
4,600.00	0.00	0.00	4,600.00	0.00	0.00	0.00	0.00	0.00	0.00
4,700.00	0.00	0.00	4,700.00	0.00	0.00	0.00	0.00	0.00	0.00
4,800.00	0.00	0.00	4,800.00	0.00	0.00	0.00	0.00	0.00	0.00
4,900.00	0.00	0.00	4,900.00	0.00	0.00	0.00	0.00	0.00	0.00
5,000.00	0.00	0.00	5,000.00	0.00	0.00	0.00	0.00	0.00	0.00

# EOG Resources Inc

## Planning Report

<b>Database:</b>	EDM	<b>Local Co-ordinate Reference:</b>	Site Elk Creek 08-03H
<b>Company:</b>	Denver Division- Colorado	<b>TVD Reference:</b>	RIG @ 5132.00ft (TBD)
<b>Project:</b>	DJ - Hereford Ranch	<b>MD Reference:</b>	RIG @ 5132.00ft (TBD)
<b>Site:</b>	Elk Creek 08-03H	<b>North Reference:</b>	True
<b>Well:</b>	Elk Creek 08-03H	<b>Survey Calculation Method:</b>	Minimum Curvature
<b>Wellbore:</b>	Original Wellbore		
<b>Design:</b>	APD Directional Plan		

### Planned Survey

Measured Depth (ft)	Inclination (deg)	Azimuth (deg)	Vertical Depth (ft)	+N/-S (ft)	+E/-W (ft)	Vertical Section (ft)	Dogleg Rate (?/100ft)	Build Rate (?/100ft)	Turn Rate (?/100ft)
5,100.00	0.00	0.00	5,100.00	0.00	0.00	0.00	0.00	0.00	0.00
5,200.00	0.00	0.00	5,200.00	0.00	0.00	0.00	0.00	0.00	0.00
5,300.00	0.00	0.00	5,300.00	0.00	0.00	0.00	0.00	0.00	0.00
5,400.00	0.00	0.00	5,400.00	0.00	0.00	0.00	0.00	0.00	0.00
5,500.00	0.00	0.00	5,500.00	0.00	0.00	0.00	0.00	0.00	0.00
5,600.00	0.00	0.00	5,600.00	0.00	0.00	0.00	0.00	0.00	0.00
5,700.00	0.00	0.00	5,700.00	0.00	0.00	0.00	0.00	0.00	0.00
5,800.00	0.00	0.00	5,800.00	0.00	0.00	0.00	0.00	0.00	0.00
5,900.00	0.00	0.00	5,900.00	0.00	0.00	0.00	0.00	0.00	0.00
6,000.00	0.00	0.00	6,000.00	0.00	0.00	0.00	0.00	0.00	0.00
6,100.00	0.00	0.00	6,100.00	0.00	0.00	0.00	0.00	0.00	0.00
6,200.00	0.00	0.00	6,200.00	0.00	0.00	0.00	0.00	0.00	0.00
6,300.00	0.00	0.00	6,300.00	0.00	0.00	0.00	0.00	0.00	0.00
6,400.00	0.00	0.00	6,400.00	0.00	0.00	0.00	0.00	0.00	0.00
6,462.53	0.00	0.00	6,462.53	0.00	0.00	0.00	0.00	0.00	0.00
6,500.00	4.50	154.53	6,499.96	-1.33	0.63	1.47	12.00	12.00	0.00
6,600.00	16.50	154.53	6,598.11	-17.74	8.45	19.65	12.00	12.00	0.00
6,700.00	28.50	154.53	6,690.33	-52.22	24.87	57.84	12.00	12.00	0.00
6,800.00	40.50	154.53	6,772.60	-103.26	49.18	114.38	12.00	12.00	0.00
6,900.00	52.50	154.53	6,841.31	-168.63	80.31	186.78	12.00	12.00	0.00
7,000.00	64.50	154.53	6,893.47	-245.46	116.90	271.88	12.00	12.00	0.00
7,100.00	76.50	154.53	6,926.80	-330.41	157.36	365.97	12.00	12.00	0.00
7,200.00	88.50	154.53	6,939.84	-419.76	199.91	464.93	12.00	12.00	0.00
7,212.54	90.00	154.53	6,940.00	-431.08	205.30	477.47	12.00	12.00	0.00
7"									
7,300.00	90.00	154.53	6,940.00	-510.04	242.90	564.93	0.00	0.00	0.00
7,400.00	90.00	154.53	6,940.00	-600.33	285.90	664.93	0.00	0.00	0.00
7,500.00	90.00	154.53	6,940.00	-690.61	328.90	764.93	0.00	0.00	0.00
7,600.00	90.00	154.53	6,940.00	-780.90	371.90	864.93	0.00	0.00	0.00
7,700.00	90.00	154.53	6,940.00	-871.18	414.89	964.93	0.00	0.00	0.00
7,800.00	90.00	154.53	6,940.00	-961.46	457.89	1,064.93	0.00	0.00	0.00
7,900.00	90.00	154.53	6,940.00	-1,051.75	500.89	1,164.93	0.00	0.00	0.00
8,000.00	90.00	154.53	6,940.00	-1,142.03	543.88	1,264.93	0.00	0.00	0.00
8,100.00	90.00	154.53	6,940.00	-1,232.32	586.88	1,364.93	0.00	0.00	0.00
8,200.00	90.00	154.53	6,940.00	-1,322.60	629.88	1,464.93	0.00	0.00	0.00
8,300.00	90.00	154.53	6,940.00	-1,412.89	672.88	1,564.93	0.00	0.00	0.00
8,400.00	90.00	154.53	6,940.00	-1,503.17	715.87	1,664.93	0.00	0.00	0.00
8,500.00	90.00	154.53	6,940.00	-1,593.45	758.87	1,764.93	0.00	0.00	0.00
8,600.00	90.00	154.53	6,940.00	-1,683.74	801.87	1,864.93	0.00	0.00	0.00
8,700.00	90.00	154.53	6,940.00	-1,774.02	844.86	1,964.93	0.00	0.00	0.00
8,800.00	90.00	154.53	6,940.00	-1,864.31	887.86	2,064.93	0.00	0.00	0.00
8,900.00	90.00	154.53	6,940.00	-1,954.59	930.86	2,164.93	0.00	0.00	0.00
9,000.00	90.00	154.53	6,940.00	-2,044.87	973.86	2,264.93	0.00	0.00	0.00
9,100.00	90.00	154.53	6,940.00	-2,135.16	1,016.85	2,364.93	0.00	0.00	0.00
9,200.00	90.00	154.53	6,940.00	-2,225.44	1,059.85	2,464.93	0.00	0.00	0.00
9,300.00	90.00	154.53	6,940.00	-2,315.73	1,102.85	2,564.93	0.00	0.00	0.00
9,400.00	90.00	154.53	6,940.00	-2,406.01	1,145.84	2,664.93	0.00	0.00	0.00
9,500.00	90.00	154.53	6,940.00	-2,496.30	1,188.84	2,764.93	0.00	0.00	0.00
9,600.00	90.00	154.53	6,940.00	-2,586.58	1,231.84	2,864.93	0.00	0.00	0.00
9,700.00	90.00	154.53	6,940.00	-2,676.86	1,274.84	2,964.93	0.00	0.00	0.00
9,800.00	90.00	154.53	6,940.00	-2,767.15	1,317.83	3,064.93	0.00	0.00	0.00
9,900.00	90.00	154.53	6,940.00	-2,857.43	1,360.83	3,164.93	0.00	0.00	0.00
10,000.00	90.00	154.53	6,940.00	-2,947.72	1,403.83	3,264.93	0.00	0.00	0.00

# EOG Resources Inc

## Planning Report

<b>Database:</b>	EDM	<b>Local Co-ordinate Reference:</b>	Site Elk Creek 08-03H
<b>Company:</b>	Denver Division- Colorado	<b>TVD Reference:</b>	RIG @ 5132.00ft (TBD)
<b>Project:</b>	DJ - Hereford Ranch	<b>MD Reference:</b>	RIG @ 5132.00ft (TBD)
<b>Site:</b>	Elk Creek 08-03H	<b>North Reference:</b>	True
<b>Well:</b>	Elk Creek 08-03H	<b>Survey Calculation Method:</b>	Minimum Curvature
<b>Wellbore:</b>	Original Wellbore		
<b>Design:</b>	APD Directional Plan		

Planned Survey									
Measured Depth (ft)	Inclination (deg)	Azimuth (deg)	Vertical Depth (ft)	+N/-S (ft)	+E/-W (ft)	Vertical Section (ft)	Dogleg Rate (?/100ft)	Build Rate (?/100ft)	Turn Rate (?/100ft)
10,100.00	90.00	154.53	6,940.00	-3,038.00	1,446.82	3,364.93	0.00	0.00	0.00
10,200.00	90.00	154.53	6,940.00	-3,128.29	1,489.82	3,464.93	0.00	0.00	0.00
10,300.00	90.00	154.53	6,940.00	-3,218.57	1,532.82	3,564.93	0.00	0.00	0.00
10,400.00	90.00	154.53	6,940.00	-3,308.85	1,575.82	3,664.93	0.00	0.00	0.00
10,500.00	90.00	154.53	6,940.00	-3,399.14	1,618.81	3,764.93	0.00	0.00	0.00
10,600.00	90.00	154.53	6,940.00	-3,489.42	1,661.81	3,864.93	0.00	0.00	0.00
10,700.00	90.00	154.53	6,940.00	-3,579.71	1,704.81	3,964.93	0.00	0.00	0.00
10,800.00	90.00	154.53	6,940.00	-3,669.99	1,747.81	4,064.93	0.00	0.00	0.00
10,900.00	90.00	154.53	6,940.00	-3,760.28	1,790.80	4,164.93	0.00	0.00	0.00
11,000.00	90.00	154.53	6,940.00	-3,850.56	1,833.80	4,264.93	0.00	0.00	0.00
11,100.00	90.00	154.53	6,940.00	-3,940.84	1,876.80	4,364.93	0.00	0.00	0.00
11,200.00	90.00	154.53	6,940.00	-4,031.13	1,919.79	4,464.93	0.00	0.00	0.00
11,300.00	90.00	154.53	6,940.00	-4,121.41	1,962.79	4,564.93	0.00	0.00	0.00
11,400.00	90.00	154.53	6,940.00	-4,211.70	2,005.79	4,664.93	0.00	0.00	0.00
11,500.00	90.00	154.53	6,940.00	-4,301.98	2,048.79	4,764.93	0.00	0.00	0.00
11,540.43	90.00	154.53	6,940.00	-4,338.48	2,066.17	4,805.36	0.00	0.00	0.00
4 1/2" - Elk Creek 08-03H (BHL)									

Targets									
Target Name	Dip Angle (deg)	Dip Dir. (deg)	TVD (ft)	+N/-S (ft)	+E/-W (ft)	Northing (ft)	Easting (ft)	Latitude	Longitude
- hit/miss target									
- Shape									
Elk Creek 08-03H (BHL)	0.00	0.00	6,940.00	-4,338.48	2,066.17	557,979.64	2,330,367.96	40° 51' 32.220 N	104° 18' 20.570 W
- plan hits target center									
- Point									

Casing Points					
Measured Depth (ft)	Vertical Depth (ft)	Name	Casing Diameter (")	Hole Diameter (")	
1,110.00	1,110.00	9-5/8"	9-5/8	13-1/2	
7,212.54	6,940.00	7"	7	8-3/4	
11,540.43	6,940.00	4 1/2"	4-1/2	6	