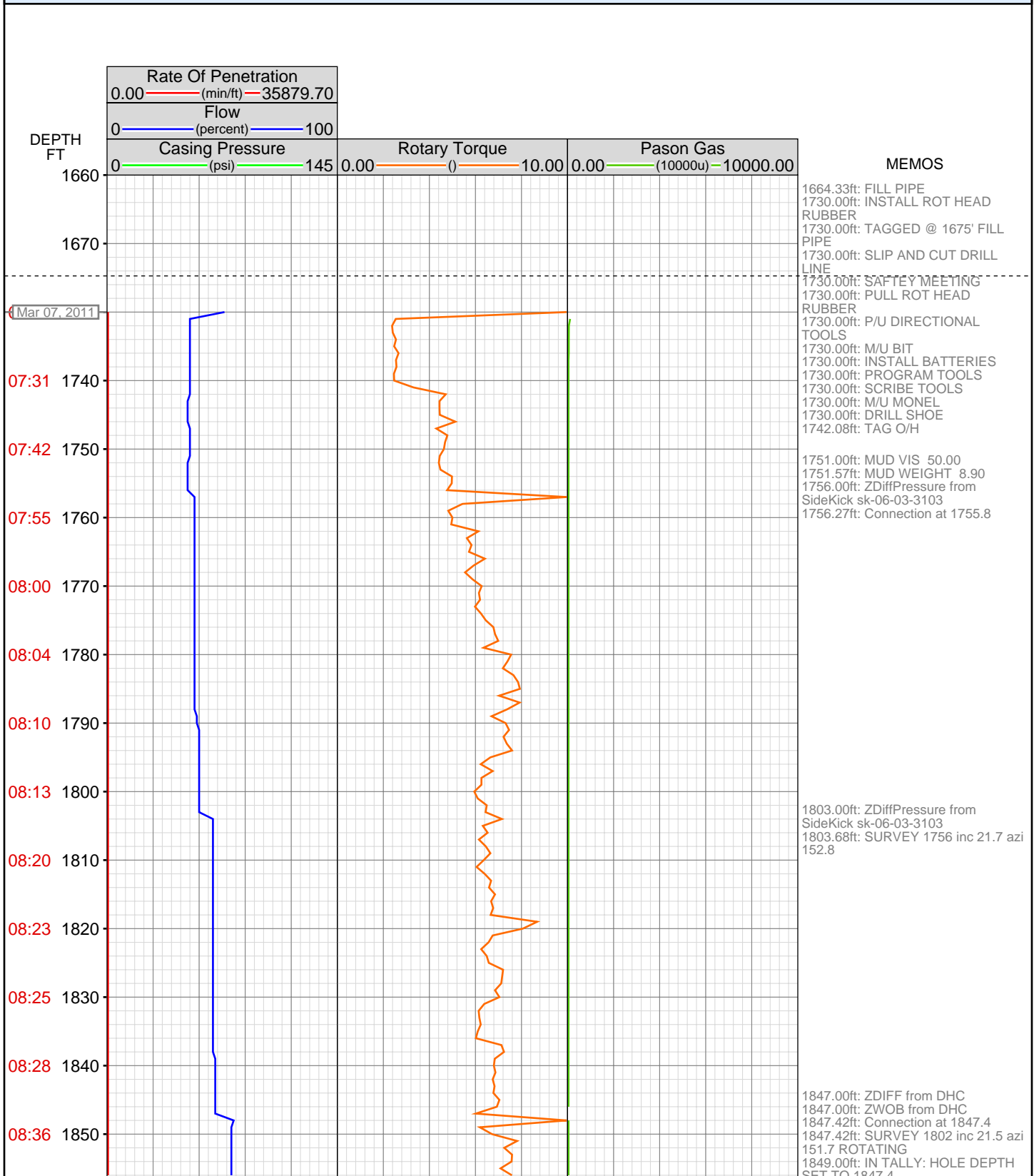


OPERATOR: EnCana Oil & Gas (USA), Inc.	CONTRACTOR: Patterson-UTI Drilling Company
WELL: NPMF 05D-16 H17 696	UNIQUE WELL ID: 05-045-18697-00
FIELD:	SPUD DATE: Mar 07, 2011 07:00
LOCATION: QtrQtr:SENE, Sec:17, Twp: 6S, Rng:96W, MREA	RELEASE DATE: Mar 10, 2011 18:30
COUNTRY: USA	
RIG: Pat-UTI 303	



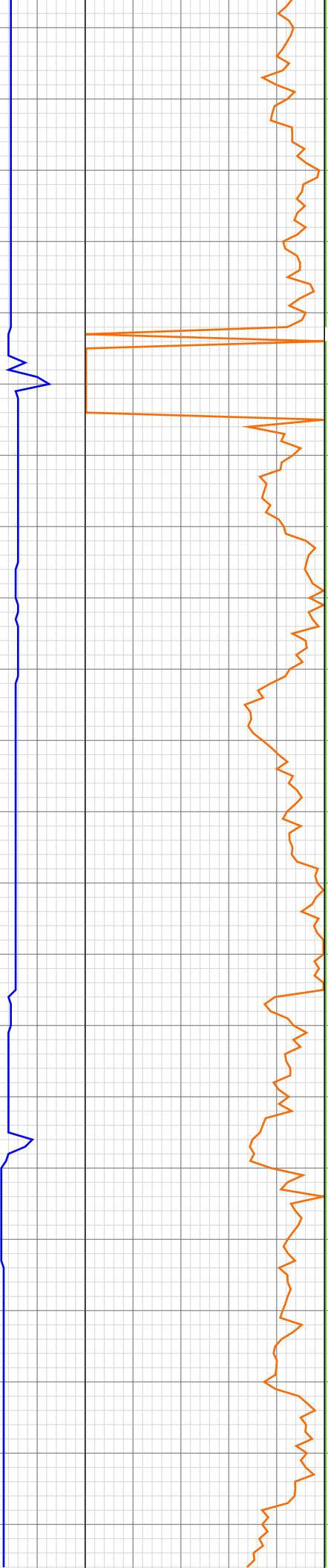
08:38 1860
08:41 1870
08:43 1880
08:46 1890
08:48 1900
08:52 1910
08:55 1920
08:58 1930
09:06 1940
09:08 1950
09:10 1960
09:13 1970
09:15 1980
09:17 1990
09:19 2000
09:21 2010
09:23 2020
09:25 2030
09:32 2040
09:34 2050
09:36 2060
09:38 2070



1939.00ft: IN TALLY: HOLE DEPTH
SET TO 1939.1
1939.00ft: ZDIFF from DHC
1939.00ft: ZWOB from DHC
1939.26ft: SURVEY 1894 inc 21.6 azi
152.1
1940.81ft: Connection at 1939.0
1942.88ft: ROTATING

2031.00ft: HOOKLOAD WAS
RECALIBRATED
2031.00ft: ZWOB from DHC
2031.55ft: SURVEY @ 1985 inc 22.5
azi 151.2 tvd 1916.12
2031.55ft: Connection at 2030.6
2031.55ft: ROTATING
2031.55ft: ZDIFF from DHC

09:40 2080
09:42 2090
09:43 2100
09:46 2110
09:48 2120
09:59 2130
10:01 2140
10:02 2150
10:04 2160
10:06 2170
10:08 2180
10:09 2190
10:11 2200
10:13 2210
10:23 2220
10:25 2230
10:28 2240
10:31 2250
10:33 2260
10:35 2270
10:37 2280
10:38 2290



2123.60ft: SLIDING
2126.00ft: MUD VIS 50.00
2126.00ft: MUD WEIGHT 8.90
2126.22ft: Connection at 2122.1
2127.00ft: IN TALLY: HOLE DEPTH
SET TO 2122.1

2138.45ft: ROTATING

2214.00ft: ZWOB from DHC
2214.78ft: Connection at 2213.7
2214.78ft: ROTATING
2214.78ft: SURVEY @ 2168 INC 19.7
AZI 148.2

10:40 2300
10:49 2310
10:51 2320
10:53 2330
10:55 2340
10:57 2350
10:58 2360
11:00 2370
11:02 2380
11:04 2390
11:11 2400
11:12 2410
11:14 2420
11:16 2430
11:18 2440
11:20 2450
11:22 2460
11:24 2470
11:26 2480
11:28 2490
11:36 2500
11:38 2510

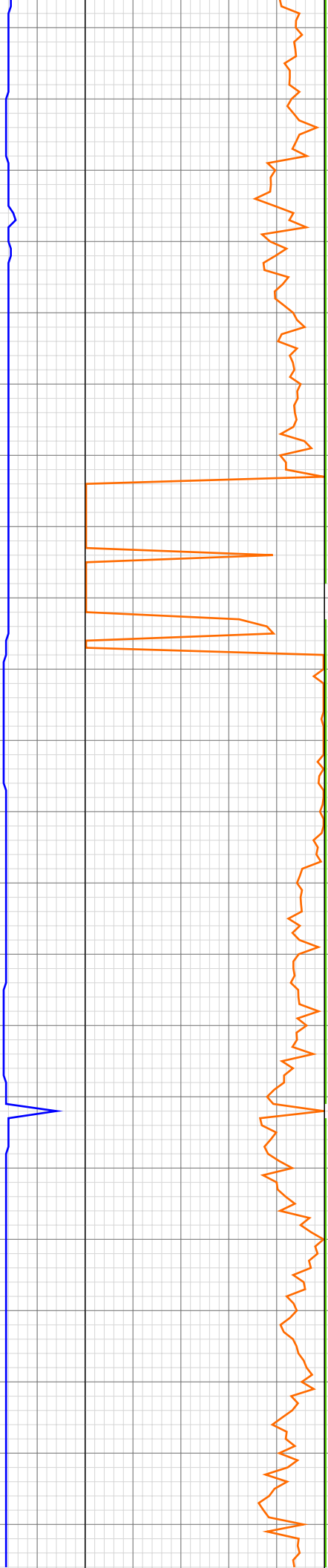


2305.15ft: ROTATING SURVEY @
2260 INC 18.4 AZI 150.9 Connection
at 2305.2
2308.00ft: IN TALLY: HOLE DEPTH
SET TO 2305.2
2308.00ft: ZDIFF from DHC

2397.69ft: Connection at 2396.8
2398.00ft: ZDIFF from DHC
2398.35ft: ROTATING SURVEY @
2351 INC 18.4 AZI 148.3

2488.83ft: Connection at 2488.4
2488.83ft: ROTATING SURVEY @
2443 INC 17.1 AZI 151.8
2491.00ft: IN TALLY: HOLE DEPTH
SET TO 2488.4

11:40 2520
11:41 2530
11:43 2540
11:45 2550
11:47 2560
11:49 2570
11:52 2580
11:59 2590
12:02 2600
12:06 2610
12:08 2620
12:10 2630
12:12 2640
12:14 2650
12:16 2660
12:18 2670
12:28 2680
12:30 2690
12:32 2700
12:33 2710
12:35 2720
12:36 2730



2544.00ft: MUD VIS 54.00
2544.00ft: MUD WEIGHT 9.00

2582.00ft: ZDIFF from DHC
2582.03ft: Connection at 2580.0
2582.13ft: SLIDING

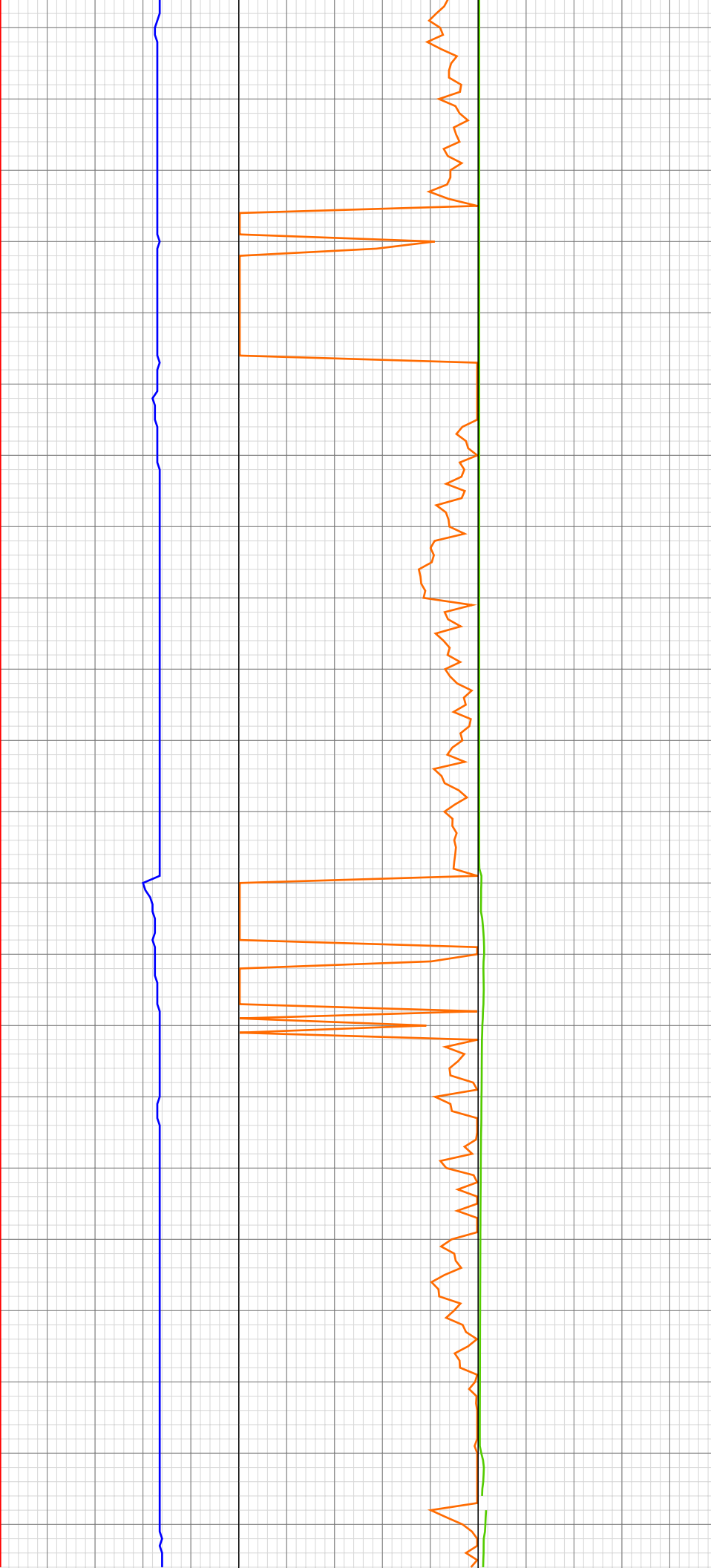
2611.03ft: ROTATING

2671.59ft: ROTATING SURVEY @
2626 INC 18.3 AZI 155.5 Connection
at 2671.6
2671.59ft: ZDIFF from DHC
2675.00ft: IN TALLY: HOLE DEPTH
SET TO 2671.6
2675.00ft: ZWOB from DHC

2693.00ft: 021TGAS 05121646
SW0.28 HW25.00 - 26 days on
2694.00ft: 008TGAS-Check dryer
cable (rig air)

2712.00ft: 042TGAS-Check dryer
cable (unplugged?)

12:39 2740
12:42 2750
12:44 2760
12:51 2770
12:53 2780
12:57 2790
12:59 2800
13:01 2810
13:02 2820
13:04 2830
13:07 2840
13:08 2850
13:19 2860
13:22 2870
13:27 2880
13:29 2890
13:31 2900
13:33 2910
13:35 2920
13:36 2930
13:38 2940
13:49 2950



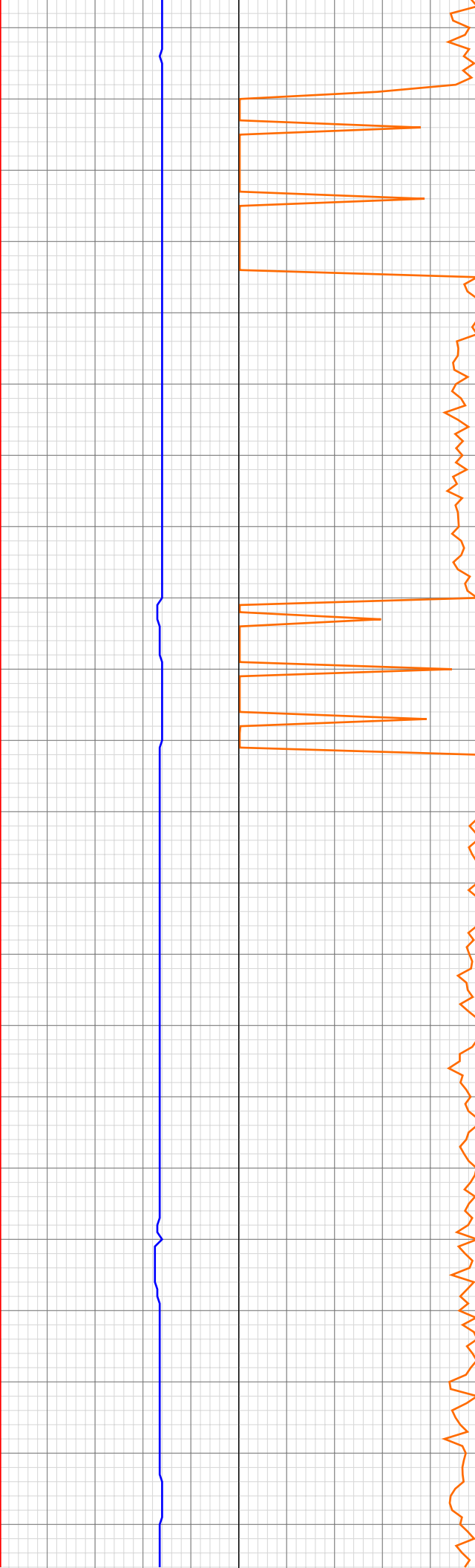
2764.98ft: Connection at 2763.2

2823.00ft: MUD WEIGHT 9.05
2823.91ft: MUD VIS 51.00

2858.33ft: Connection at 2854.8
2858.33ft: SLIDING

2946.50ft: Connection at 2946.3
2946.50ft: SURVEY @ 2901 INC 15.7
AZI 164.7
2950.00ft: IN TALLY: HOLE DEPTH
SET TO 2946.3
2950.00ft: ZDIFF from DHC
2950.00ft: ZWOB from DHC

13:51 2960
13:56 2970
14:01 2980
14:04 2990
14:08 3000
14:09 3010
14:12 3020
14:14 3030
14:23 3040
14:29 3050
14:33 3060
14:35 3070
14:37 3080
14:38 3090
14:40 3100
14:42 3110
14:44 3120
14:53 3130
14:55 3140
14:57 3150
14:59 3160
15:01 3170



2966.46ft: SLIDING

2995.44ft: ROTATING

3039.00ft: MUD VIS 50.00
3039.00ft: ZDIFF from DHC
3039.49ft: MUD WEIGHT 9.15
3039.49ft: Connection at 3037.6
3039.49ft: SURVEY @ 2992 INC 16.4
AZI 160.6
3039.74ft: SLIDING

3074.29ft: ROTATING

3129.11ft: IN TALLY: HOLE DEPTH
SET TO 3129.1
3129.11ft: Connection at 3129.1
3129.11ft: ROTATING
3129.11ft: SURVEY @ 3084 INC 18.8
AZI 154.6

15:02 3180
15:04 3190
15:06 3200
15:08 3210
15:11 3220
15:21 3230
15:24 3240
15:27 3250
15:29 3260
15:30 3270
15:32 3280
15:35 3290
15:37 3300
15:39 3310
15:48 3320
15:51 3330
15:54 3340
15:56 3350
15:58 3360
16:00 3370
16:01 3380
16:03 3390



3222.00ft: ZDIFF from DHC
3222.40ft: Connection at 3220.7
3222.40ft: SLIDING

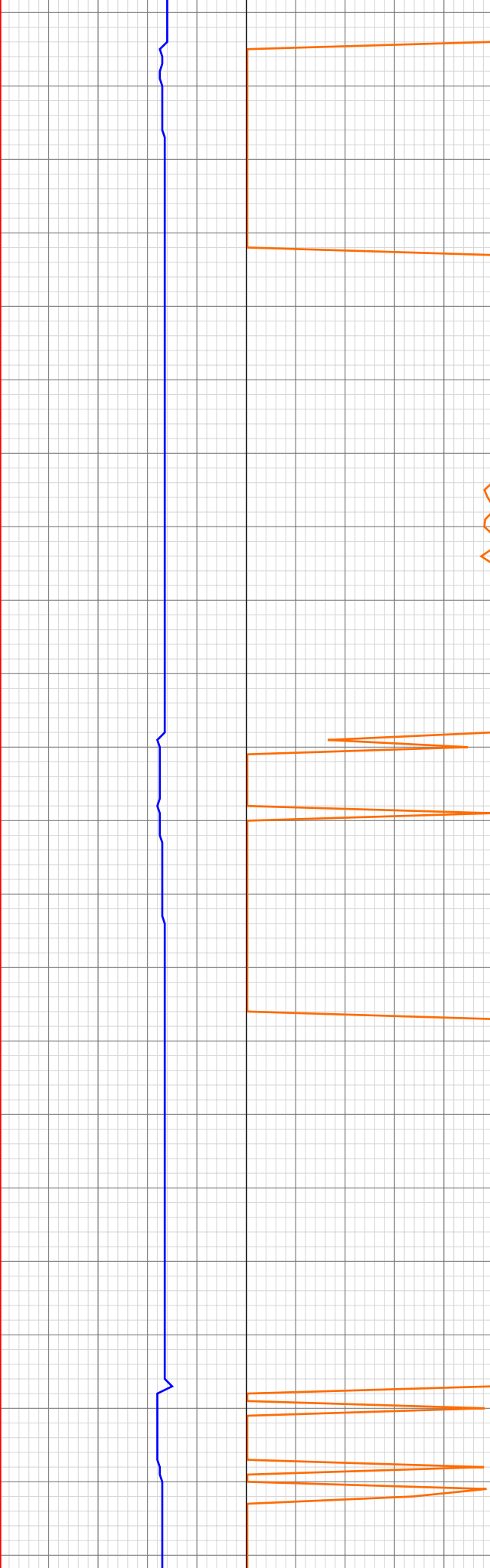
3244.00ft: ROTATING

3300.98ft: MUD VIS 53.00
3302.00ft: MUD WEIGHT 9.20

3314.99ft: ZDIFF from DHC
3315.45ft: Connection at 3312.3
3315.45ft: SLIDING SURVEY @ 3267
INC 17.1 AZI 149.2

3335.04ft: ROTATING

16:05 3400
16:16 3410
16:19 3420
16:22 3430
16:24 3440
16:25 3450
16:27 3460
16:29 3470
16:30 3480
16:32 3490
16:55 3500
16:57 3510
17:00 3520
17:03 3530
17:06 3540
17:08 3550
17:09 3560
17:11 3570
17:13 3580
17:27 3590
17:31 3600
17:35 3610



3403.77ft: Connection at 3403.8
3403.77ft: ZDIFF from DHC
3408.01ft: IN TALLY: HOLE DEPTH
SET TO 3403.8
3411.71ft: SURVEY @ 3358 INC 15.5
AZI 147.7 SLIDING

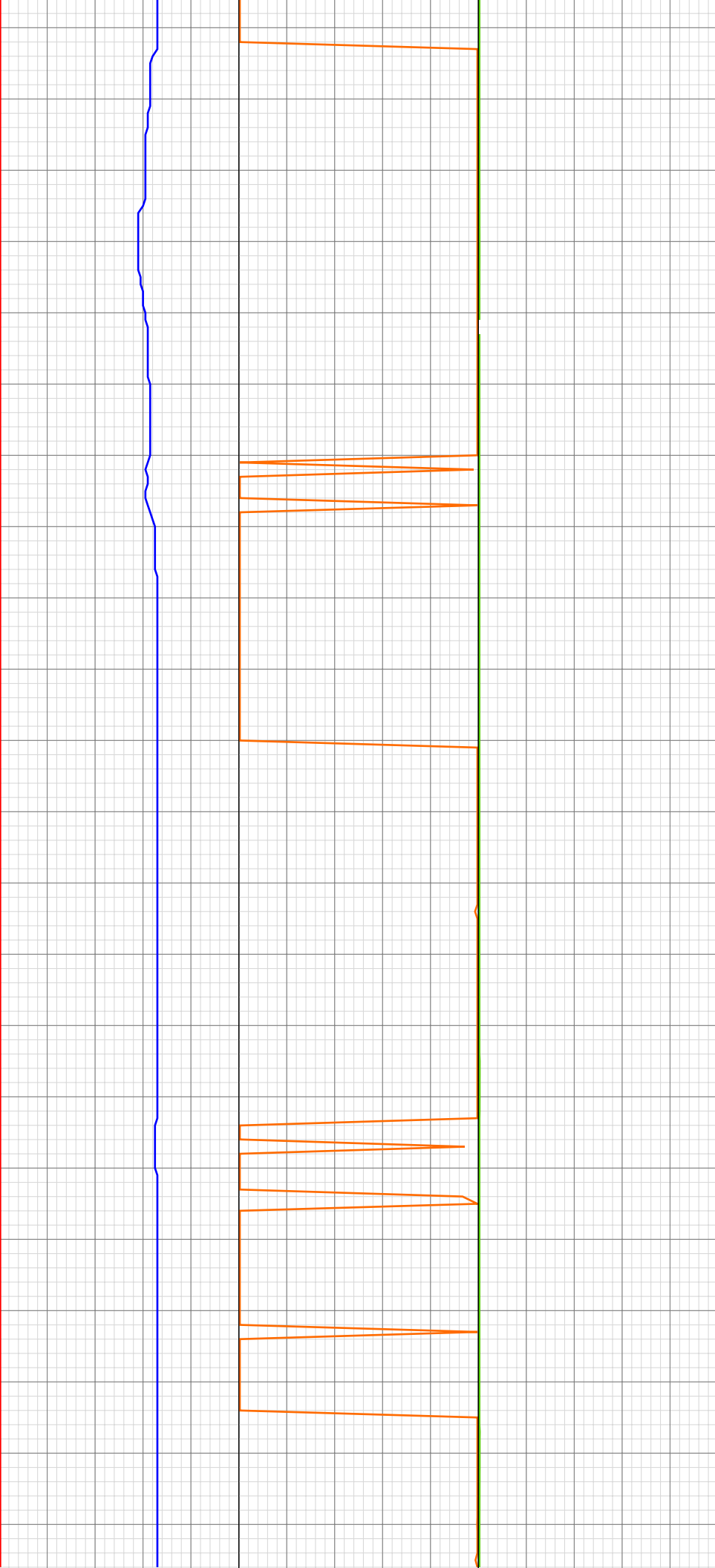
3433.96ft: ROTATING

3497.51ft: RIG SERVICE
3497.51ft: SURVEY @ 3450 INC 13.1
AZI 144.7
3497.64ft: Connection at 3495.2
3500.07ft: SLIDING

3534.48ft: ROTATING

3593.01ft: ZDIFF from DHC
3593.01ft: IN TALLY: HOLE DEPTH
SET TO 3586.7
3593.41ft: Connection at 3586.7
SURVEY @ 3541 INC 11.1 AZI 142.7
3593.41ft: SLIDING
3602.00ft: MUD VIS 51.00
3602.00ft: MUD WEIGHT 9.25

17:39 3620
17:42 3630
17:43 3640
17:45 3650
17:47 3660
17:48 3670
17:59 3680
18:04 3690
18:08 3700
18:12 3710
18:16 3720
18:19 3730
18:21 3740
18:23 3750
18:25 3760
18:27 3770
18:42 3780
18:45 3790
18:49 3800
18:53 3810
18:56 3820
18:57 3830



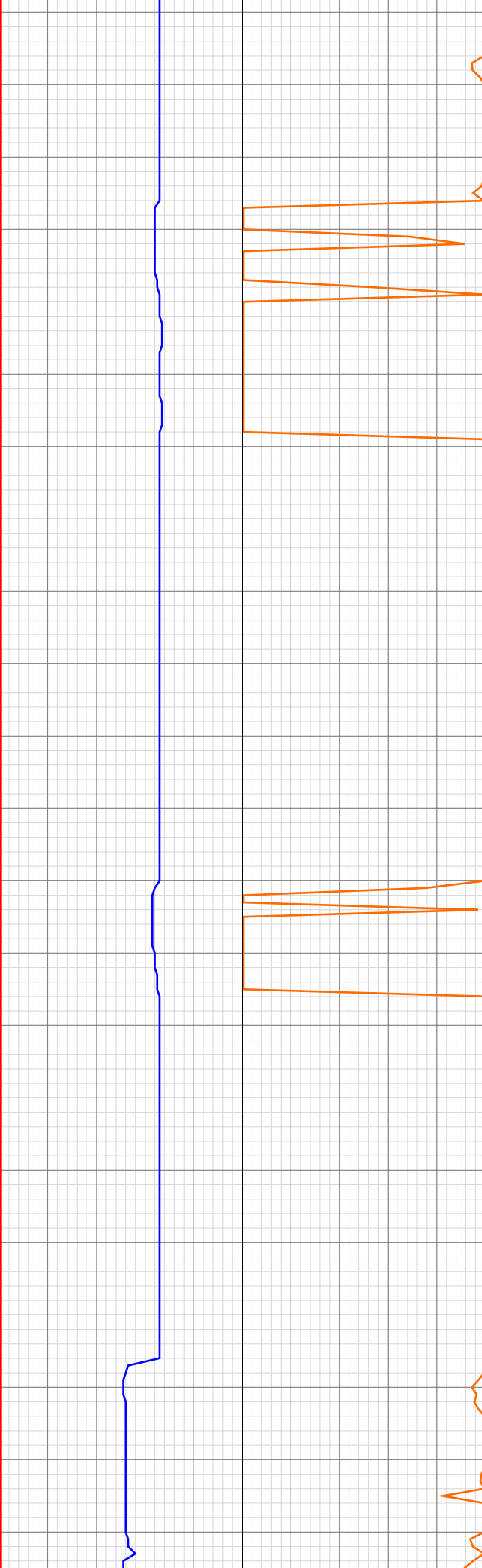
3630.58ft: ROTATING

3679.00ft: ZDIFF from DHC
3679.79ft: Connection at 3678.2
3679.79ft: SLIDING
3684.06ft: SURVEY @3633' INC 8.1
AZ 151.9 TVD 3489.44'

3720.74ft: ROTATING

3772.01ft: 008TGAS-Check dryer
cable (rig air)
3772.01ft: ZWOB from SideKick
sk-06-03-3103
3772.01ft: ZDiffPressure from
SideKick sk-06-03-3103
3772.31ft: SURVEY @3724' INC 4.8
AZ 143.4 TVD 3579.86'
3772.31ft: Connection at 3769.6
3772.31ft: SLIDING

18:59 3840
19:00 3850
19:02 3860
19:14 3870
19:18 3880
19:21 3890
19:23 3900
19:25 3910
19:26 3920
19:28 3930
19:30 3940
19:31 3950
19:42 3960
19:45 3970
19:48 3980
19:49 3990
19:51 4000
19:52 4010
19:54 4020
20:02 4030
20:07 4040
20:13 4050



3865.42ft: Connection at 3861.3
SURVEY @3816' INC 2.1 AZ 190.2
TVD 3671.70'
3867.91ft: SLIDING

3901.90ft: ROTATING

3959.51ft: Connection at 3952.8
SURVEY @3907' INC 1.5 AZ 49.5
TVD 3762.68'
3964.67ft: SLIDING

3986.52ft: ROTATING

4025.00ft: ZDIFF from DHC
4025.00ft: ZWOB from DHC
4025.72ft: BOP DRILL
4025.72ft: BACK OFF PUMPS,WT,
ROT

4044.55ft: WT-9.2+/VIS-52

4052.92ft: SURVEY @3999' INC 0.4
AZ 307.4 TVD 3854.67'
4052.92ft: Connection at 4044.4

4052.99ft: IN TALLY: HOLE DEPTH
SET TO 4044.4

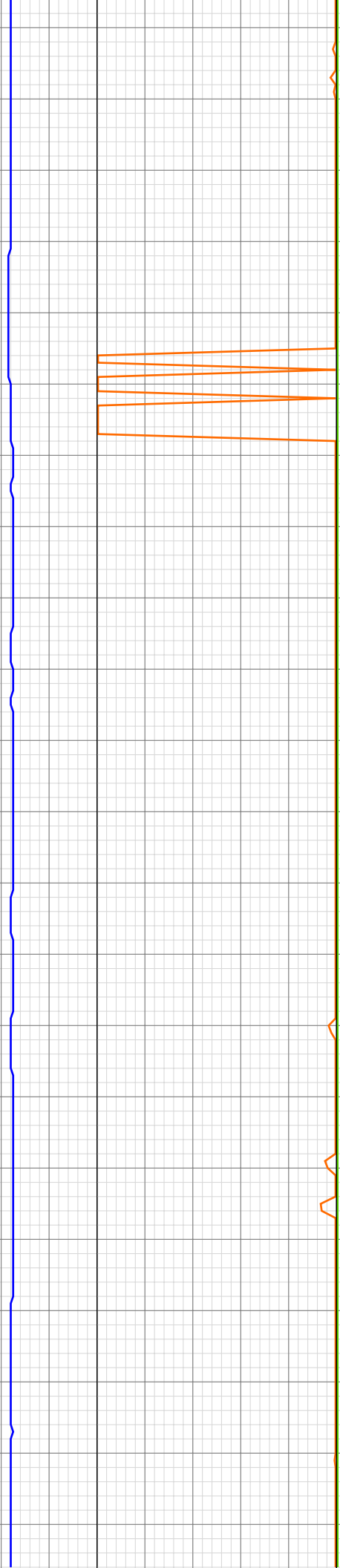
20:30 4060
20:34 4070
20:40 4080
20:47 4090
20:56 4100
21:06 4110
21:17 4120
21:29 4130
21:50 4140
21:59 4150
22:08 4160
22:19 4170
22:27 4180
22:29 4190
22:32 4200
22:35 4210
22:38 4220
22:48 4230
22:51 4240
22:53 4250
22:56 4260
22:58 4270

4137.04ft: SURVEY @4091' INC 0.2
AZ 5.4 TVD 3946.66'
4137.11ft: WT-9.3-/VIS-53 Connection
at 4136.0

4174.21ft: ZDiffPressure from
SideKick sk-06-03-3103
4174.21ft: P/U PUMPS,WT,ROT

4229.99ft: ZDIFF from DHC
4230.51ft: SURVEY @4182' INC 0.3
AZ 54.6 TVD 4037.66'
4230.51ft: Connection at 4227.5

23:01 4280
23:05 4290
23:07 4300
23:11 4310
23:13 4320
23:27 4330
23:30 4340
23:32 4350
23:34 4360
23:36 4370
23:38 4380
23:41 4390
23:44 4400
23:47 4410
23:58 4420
Mar 08, 2011
00:01 4430
00:05 4440
00:08 4450
00:11 4460
00:14 4470
00:17 4480
00:21 4490



4323.39ft: Connection at 4319.2
SURVEY @4274' INC 0.3 AZ 43.9
TVD 4129.66'
4323.39ft: SLIDING

4331.20ft: PUMP OUT CELLAR

4338.29ft: ROTATING

4417.13ft: Connection at 4410.6

4433.43ft: SURVEY @4365 INC 1.0
AZ 193.9 TVD 4220.66'

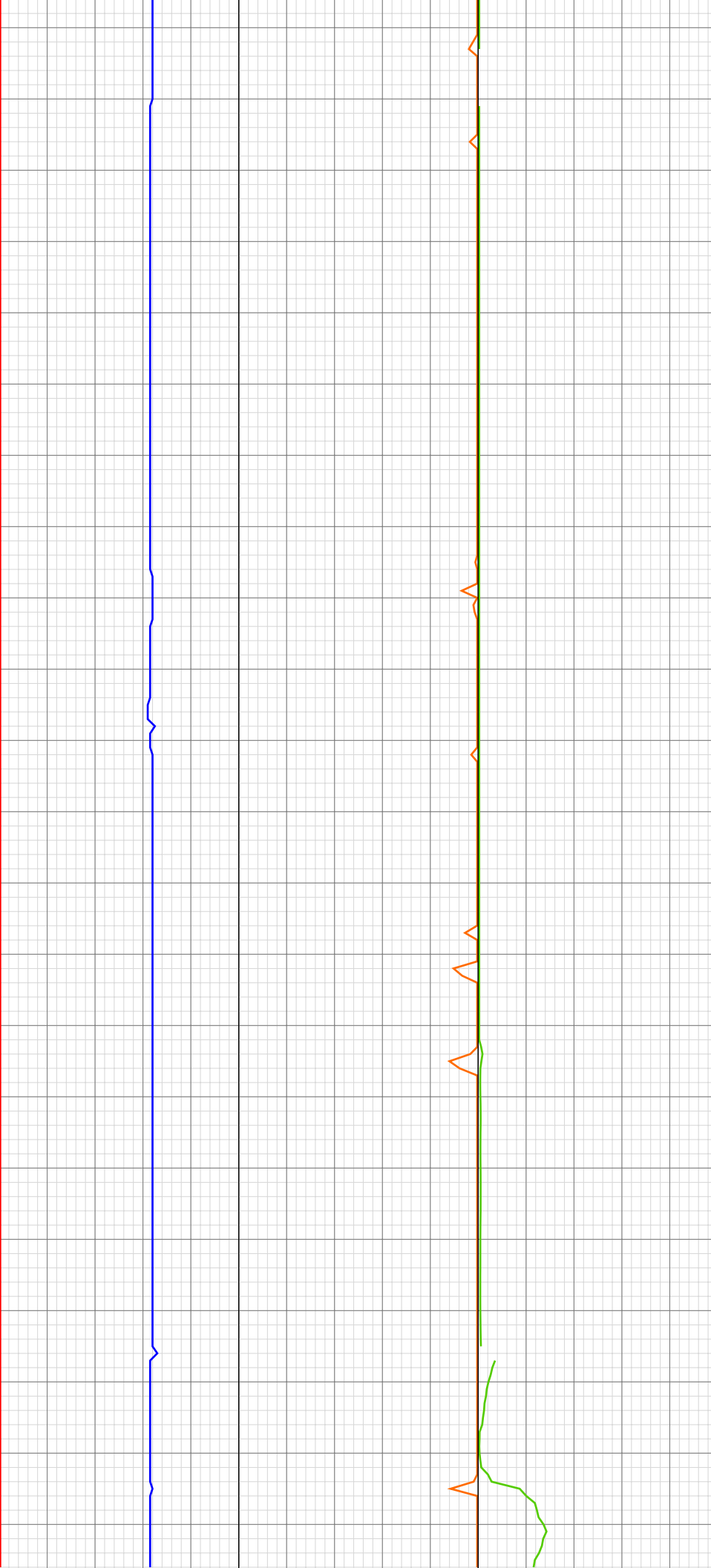
00:25 4500
00:29 4510
00:44 4520
00:48 4530
00:51 4540
00:53 4550
00:56 4560
01:00 4570
01:06 4580
01:10 4590
01:19 4600
01:24 4610
01:28 4620
01:31 4630
01:35 4640
01:40 4650
01:44 4660
01:47 4670
01:50 4680
02:01 4690
02:04 4700
02:12 4710

4502.26ft: IN TALLY: HOLE DEPTH
SET TO 4502.3
4502.30ft: SURVEY @4457' INC 1.5
AZ 202.0 TVD 4312.64' Connection at
4502.3
4510.01ft: 008TGAS-Check dryer
cable (rig air)
4510.01ft: ZDIFF from DHC
4510.01ft: ZWOB from DHC

4575.00ft: MUD WEIGHT 9.45
4575.00ft: MUD VIS 49.00

4597.24ft: Connection at 4593.9
4600.56ft: SURVEY @4548' INC 1.6
AZ 195.9 TVD 4403.60'

4689.99ft: IN TALLY: HOLE DEPTH
SET TO 4685.5
4690.58ft: Connection at 4685.5
4690.58ft: SURVEY @4640' INC 1.1
AZ 198.9 TVD 4495.58'



02:15 4720
02:18 4730
02:23 4740
02:33 4750
02:38 4760
02:42 4770
02:58 4780
03:03 4790
03:07 4800
03:11 4810
03:16 4820
03:20 4830
03:25 4840
03:30 4850
03:36 4860
03:39 4870
03:51 4880
03:55 4890
03:59 4900
04:04 4910
04:09 4920
04:15 4930



4756.10ft: WT-9.5/ VIS-54

4778.02ft: SURVEY @4731' INC 1.1
AZ 191.6 TVD 4586.55'
4778.02ft: INC ON SURVEY @4731'
IS 1.5
4778.02ft: Connection at 4776.9

4859.58ft: WT-9.5/VIS-52

4870.80ft: SURVEY @4823' INC 1.6
AZ 214.3 TVD 4678.52' Connection at
4868.3

04:19 4940
04:23 4950
04:27 4960
04:42 4970
04:47 4980
04:49 4990
04:53 5000
04:56 5010
04:58 5020
05:01 5030
05:04 5040
05:07 5050
05:23 5060
05:28 5070
05:34 5080
05:38 5090
05:41 5100
05:46 5110
05:49 5120
05:52 5130
05:56 5140
06:07 5150



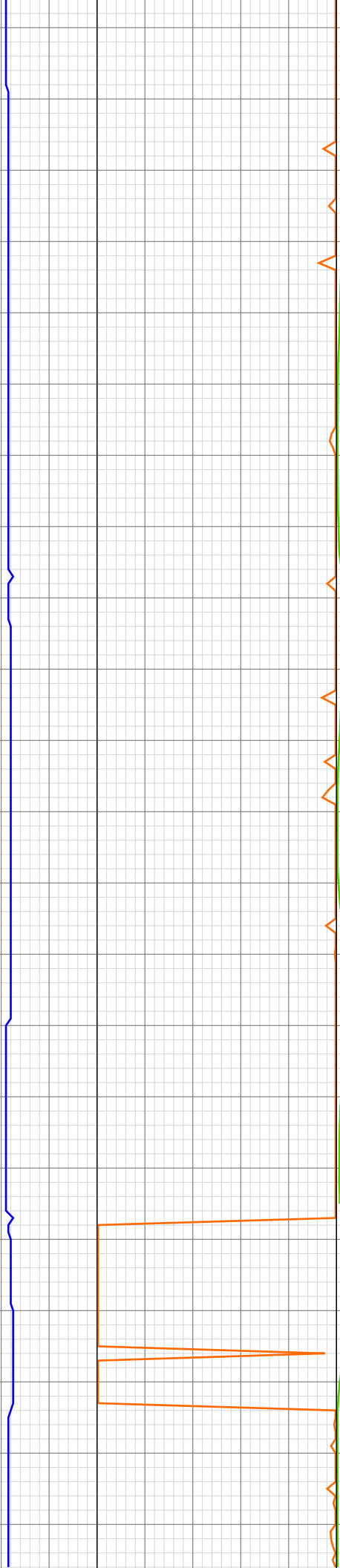
4962.99ft: ZDIFF from DHC
4963.48ft: Connection at 4959.9
4963.48ft: SLIDING
4963.48ft: SURVEY @4914' INC 2.0
AZ 202.7 TVD 4769.48'

4987.50ft: ROTATING

5054.99ft: MUD WEIGHT 9.50
5054.99ft: MUD VIS 53.00
5055.81ft: Connection at 5051.4
5055.81ft: SURVEY @5006' INC 1.1
AZ 200.5 TVD 4861.44'
5055.81ft: ZDIFF from DHC
5056.00ft: IN TALLY: HOLE DEPTH
SET TO 5051.4

5144.00ft: ZDIFF from DHC
5144.09ft: Connection at 5142.8
5144.09ft: SURVEY @ 5097 INC 1.0
AZI 194.3 TVD 4952.43 ROTATING

06:12 5160
06:16 5170
06:21 5180
06:26 5190
06:30 5200
06:35 5210
06:40 5220
06:46 5230
06:57 5240
07:01 5250
07:06 5260
07:15 5270
07:22 5280
07:27 5290
07:30 5300
07:34 5310
07:37 5320
07:54 5330
08:02 5340
08:11 5350
08:22 5360
08:30 5370



5200.00ft: 008TGAS-Check dryer cable (rig air)

5235.99ft: ZDIFF from DHC
5235.99ft: ZWOB from DHC
5236.58ft: Connection at 5234.3 SURVEY 5189 INC 1.1 AZI 228.0
5236.58ft: ROTATING

5275.98ft: MUD VIS 52.00
5275.98ft: MUD WEIGHT 9.50

5285.99ft: HGAS_021: LOCATION1 High LEL Alarm
5286.55ft: HGAS_004: Horn Muted
5287.01ft: HGAS_024: LOCATION2 High LEL Alarm
5287.99ft: HGAS_004: Horn Muted

5326.08ft: Connection at 5325.9
5326.08ft: SLIDING
5329.99ft: IN TALLY: HOLE DEPTH SET TO 5325.9

5352.49ft: ROTATING

08:38 5380
08:42 5390
08:47 5400
08:54 5410
09:08 5420
09:14 5430
09:18 5440
09:23 5450
09:28 5460
09:32 5470
09:36 5480
09:39 5490
09:43 5500
09:47 5510
10:02 5520
10:13 5530
10:21 5540
10:28 5550
10:32 5560
10:36 5570
10:41 5580
10:47 5590

5387.01ft: MUD VIS 50.00
5387.01ft: MUD WEIGHT 9.50

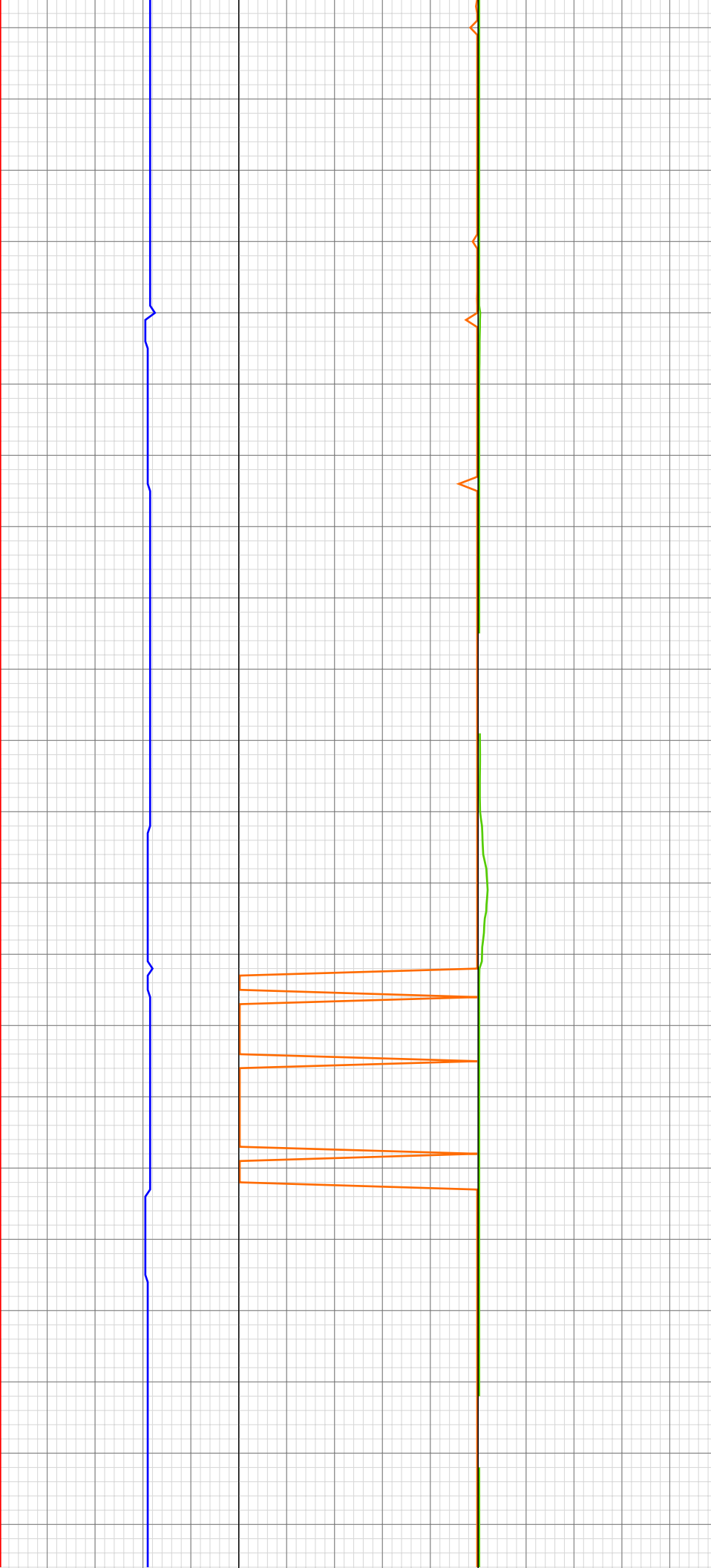
5419.00ft: ZDIFF from DHC
5419.00ft: ZWOB from DHC
5419.62ft: Connection at 5417.4
5419.62ft: SURVEY @ 5372 INC 1.2
AZI 139.4 ROTATING

5497.01ft: MUD VIS 56.00
5497.01ft: MUD WEIGHT 9.55

5511.32ft: Connection at 5508.8
5511.32ft: SLIDING
5512.83ft: SURVEY @ 5463 INC 1.2
AZI 150.4

5542.36ft: ROTATING

5550.00ft: 003TGAS-Manual flush
5552.00ft: 002TGAS-Manual zero



10:51 5600
11:03 5610
11:07 5620
11:13 5630
11:18 5640
11:23 5650
11:28 5660
11:35 5670
11:40 5680
11:47 5690
11:58 5700
12:03 5710
12:09 5720
12:14 5730
12:19 5740
12:22 5750
12:26 5760
12:34 5770
12:40 5780
12:55 5790
13:01 5800
13:07 5810



5600.26ft: Connection at 5600.2
5600.26ft: SURVEY @ 5555 INC 1.4
AZI 90.6
5600.26ft: ROTATING
5604.00ft: IN TALLY: HOLE DEPTH
SET TO 5600.2

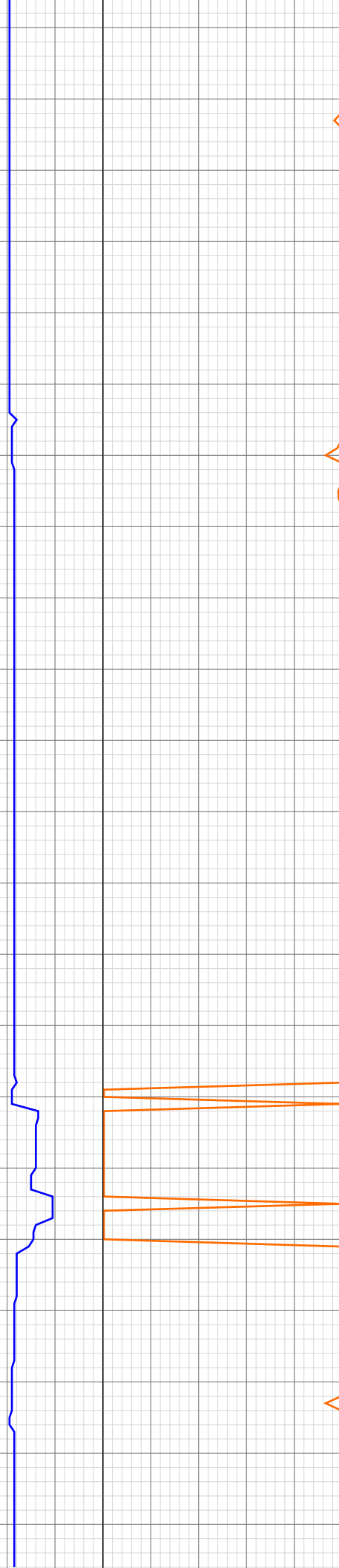
5671.00ft: 003TGAS-Manual flush
5674.02ft: 002TGAS-Manual zero

5693.01ft: MUD WEIGHT 9.60
5693.01ft: ZDIFF from DHC
5693.77ft: MUD VIS 50.00
5693.77ft: Connection at 5691.7
5693.77ft: ROTATING
5693.77ft: SURVEY @ 5646 INC 1.7
AZI 69.7

5764.01ft: 021TGAS 05121646
SW0.28 HW25.00 - 27 days on
5764.01ft: 008TGAS-Check dryer
cable (rig air)

5787.01ft: ZDIFF from DHC
5787.93ft: Connection at 5783.3
5787.93ft: ROTATING SURVEY @
5738 INC 1.1 AZI 95.4

13:13 5820
13:20 5830
13:25 5840
13:29 5850
13:33 5860
13:38 5870
13:55 5880
14:02 5890
14:06 5900
14:10 5910
14:14 5920
14:18 5930
14:21 5940
14:24 5950
14:28 5960
14:42 5970
14:56 5980
15:08 5990
15:13 6000
15:19 6010
15:26 6020
15:33 6030



5831.99ft: MUD VIS 50.00
5831.99ft: MUD WEIGHT 9.50

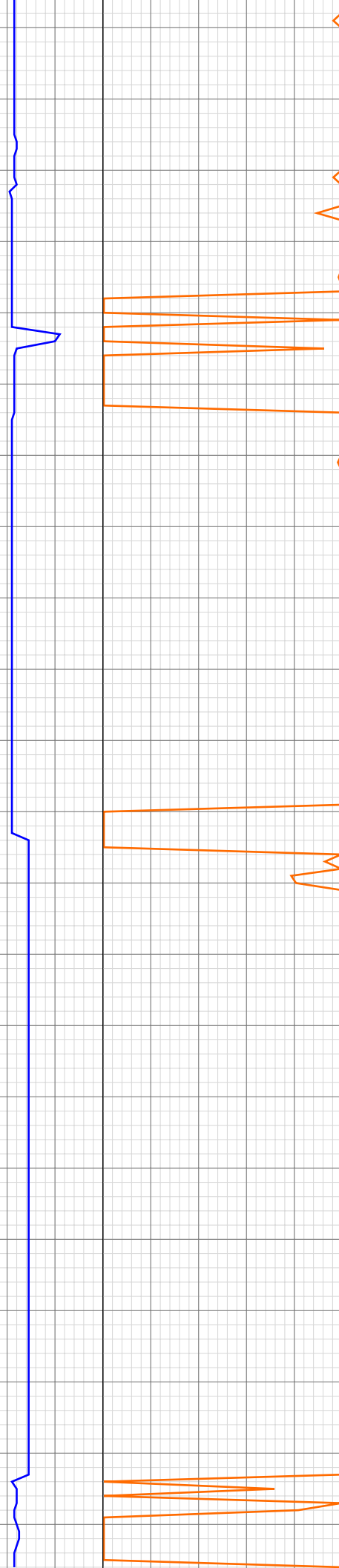
5874.77ft: Connection at 5874.8
5874.77ft: ROTATING SURVEY @
5829 INC .8 AZI 107.2
5881.00ft: IN TALLY: HOLE DEPTH
SET TO 5874.8
5881.00ft: ZDIFF from DHC

5966.99ft: ZDIFF from DHC
5967.39ft: Connection at 5966.2
5967.39ft: SLIDING

5989.63ft: ROTATING
5989.99ft: ZDIFF from DHC
5990.16ft: ZWOB from DHC

6010.99ft: MUD VIS 51.00
6010.99ft: MUD WEIGHT 9.70

15:40 6040
15:44 6050
15:51 6060
16:05 6070
16:19 6080
16:36 6090
16:46 6100
16:52 6110
16:59 6120
17:04 6130
17:11 6140
17:57 6150
18:14 6160
18:20 6170
18:26 6180
18:32 6190
18:36 6200
18:43 6210
18:48 6220
18:55 6230
18:58 6240
19:26 6250



6060.99ft: ZDIFF from DHC
6061.16ft: Connection at 6057.6
6061.16ft: SURVEY @ 6012 INC .5
AZI 190.9

6075.85ft: SLIDING

6087.01ft: MUD VIS 50.00
6087.99ft: MUD WEIGHT 9.85

6093.60ft: ROTATING

6149.28ft: IN TALLY: HOLE DEPTH
SET TO 6149.2
6152.99ft: ZDIFF from DHC
6153.61ft: RIG SERVICE
6153.61ft: SURVEY @6104' INC 0.6
AZ 192.6 TVD 5959.22'

6153.61ft: Connection at 6149.2
6154.99ft: MUD VIS 53.00
6154.99ft: MUD WEIGHT 9.90
6159.84ft: TANK #2 PASON OFF
LINE

6165.68ft: ROTATING
6168.11ft: ZWOB from DHC

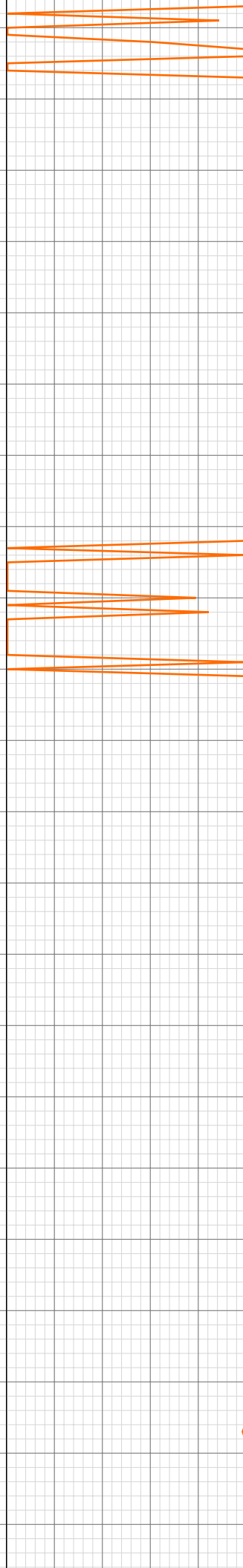
6185.99ft: 008TGAS-Check dryer
cable (rig air)

6194.06ft: PUMP SWEEP

6242.29ft: Connection at 6240.7
6242.29ft: SURVEY @ 6195' INC 1.4
AZ 194.2 TVD 6050.20'
6242.29ft: SLIDING

6250.00ft: MUD WEIGHT 9.95
6250.00ft: MUD VIS 48.00

19:41 6260
19:58 6270
20:02 6280
20:07 6290
20:12 6300
20:18 6310
20:24 6320
20:33 6330
21:06 6340
21:21 6350
21:26 6360
21:30 6370
21:37 6380
21:43 6390
21:49 6400
21:54 6410
21:59 6420
22:13 6430
22:20 6440
22:28 6450
22:39 6460
22:46 6470



6276.94ft: ROTATING

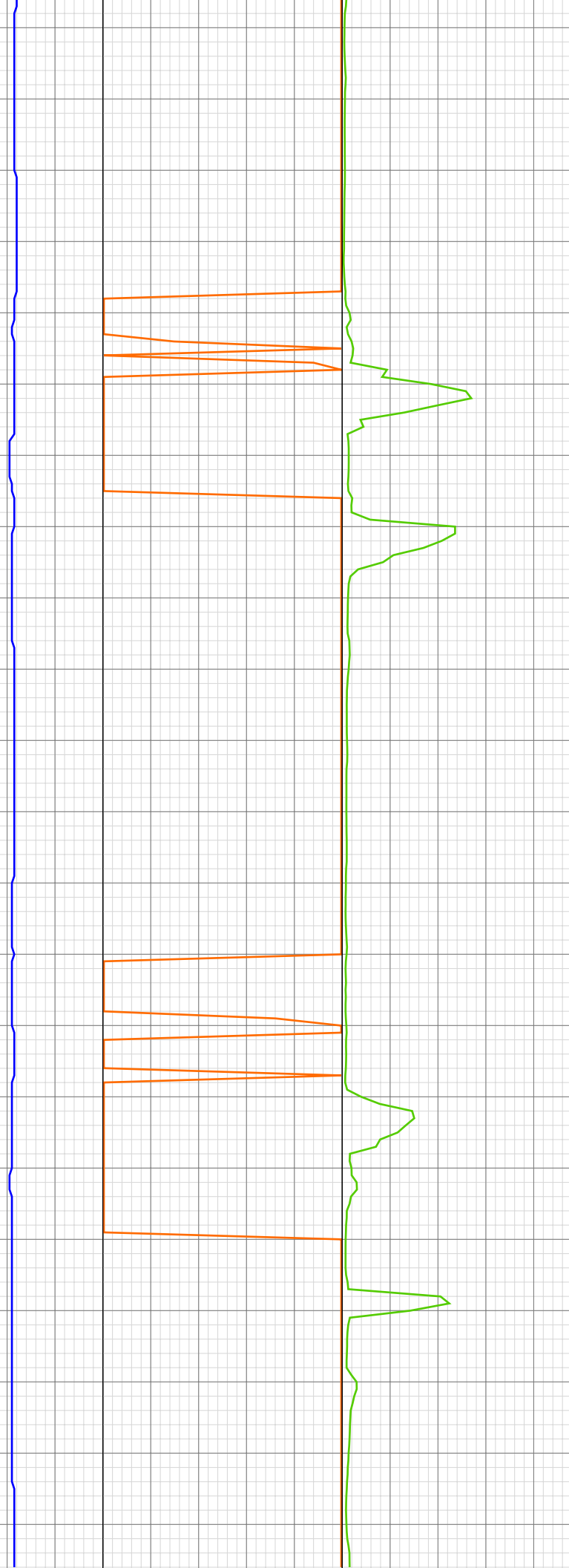
6337.01ft: ZDIFF from DHC
6337.01ft: ZDiffPressure from SideKick sk-06-03-3103
6337.07ft: SURVEY @6287' INC 1.3 AZ 218.7 TVD 6142.18'
6337.07ft: Connection at 6332.1
6337.07ft: SLIDING
6339.01ft: MUD WEIGHT 10.00
6339.01ft: MUD VIS 49.00
6339.01ft: IN TALLY: HOLE DEPTH SET TO 6332.1

6352.13ft: ROTATING

6423.00ft: ZDIFF from DHC
6423.00ft: ZWOB from DHC
6423.92ft: Connection at 6423.5
SURVEY @6378' INC 1.5 AZ 271.7 TVD 6233.15'

6450.10ft: WT-10.0/VIS-49

22:52 6480
22:59 6490
23:04 6500
23:11 6510
23:32 6520
23:54 6530
Mar 09, 2011
00:06 6540
00:17 6550
00:23 6560
00:27 6570
00:32 6580
00:37 6590
00:49 6600
01:05 6610
01:19 6620
01:33 6630
01:43 6640
01:55 6650
02:09 6660
02:16 6670
02:21 6680
02:32 6690



6516.47ft: Connection at 6514.9
6516.47ft: SURVEY @6469 INC 2.3
AZ 275.5 TVD 6324.10'
6516.47ft: SLIDING

6545.77ft: ROTATING

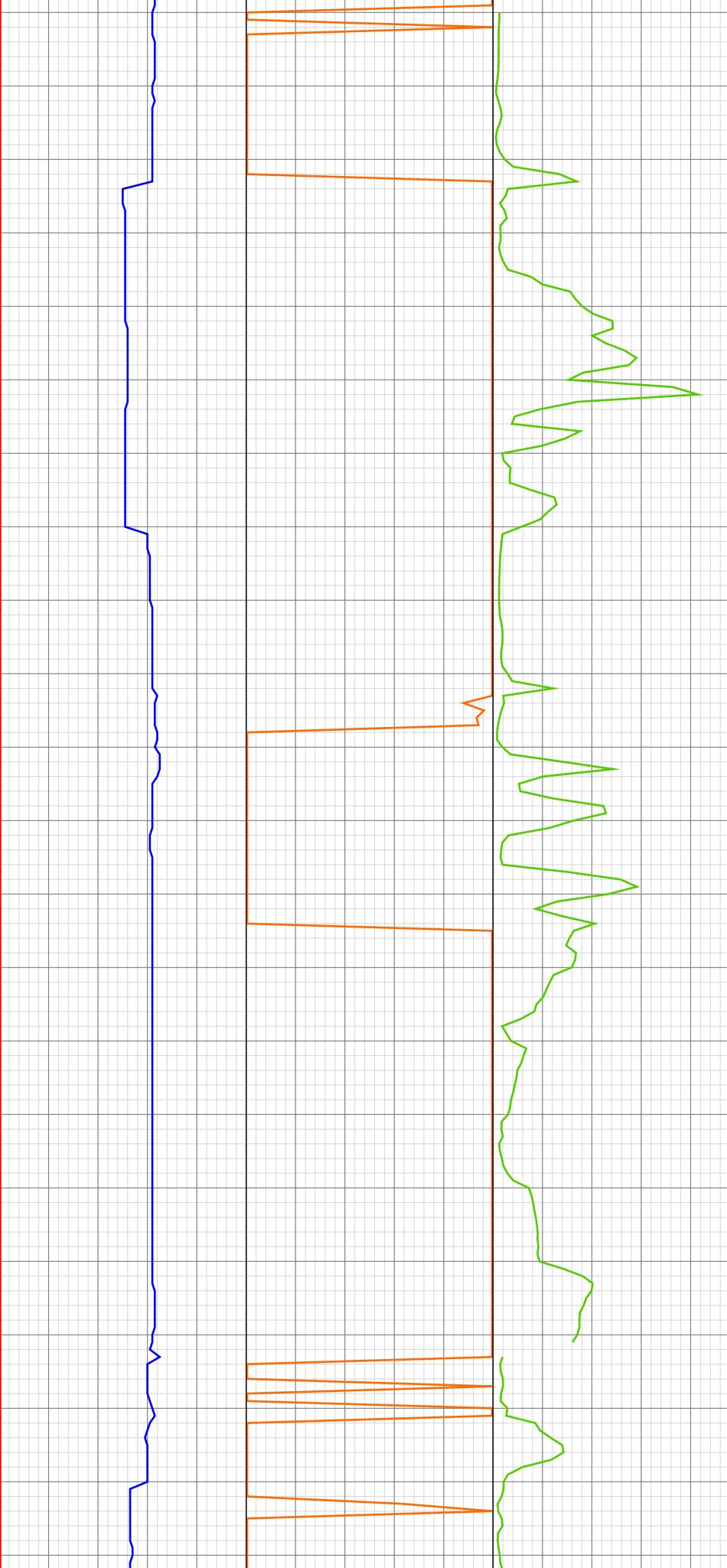
6575.98ft: 008TGAS-Check dryer
cable (rig air)
6581.99ft: MUD WEIGHT 10.00
6581.99ft: MUD VIS 49.00

6609.28ft: Connection at 6606.4
6609.28ft: SLIDING

6649.67ft: ROTATING

6693.96ft: WT-10.3/VIS-49
6693.96ft: SURVEY @6651 INC 1.0

02:55 6700
03:08 6710
03:18 6720
03:43 6730
03:52 6740
04:04 6750
04:20 6760
04:32 6770
04:37 6780
04:43 6790
05:15 6800
05:30 6810
05:44 6820
05:57 6830
06:03 6840
06:07 6850
06:17 6860
06:21 6870
06:27 6880
06:52 6890
07:07 6900
07:24 6910



6698.06ft: SURVEY @6653' INC 1.8
AZ 257.8 TVD 6507.99'
6698.06ft: SLIDING
6700.98ft: IN TALLY: HOLE DEPTH
SET TO 6698.1
6700.98ft: ZDIFF from DHC
6701.48ft: Connection at 6698.1

6722.51ft: ZDIFF from DHC BACK
OFF PUMPS,WT,ROT ROTATING

6769.00ft: MUD WEIGHT 10.03
6769.00ft: MUD VIS 52.00
6770.34ft: P/U PUMPS,WT,ROT
6770.34ft: ZDIFF from DHC

6791.99ft: ZDIFF from DHC
6792.03ft: SURVEY @6744' INC 2.1
AZ 216.9 TVD 6598.94
6792.03ft: Connection at 6789.7
6794.29ft: ZDIFF from DHC
6795.34ft: SLIDING

6824.02ft: ZDiffPressure from
SideKick sk-06-03-3103
6825.00ft: ROTATING

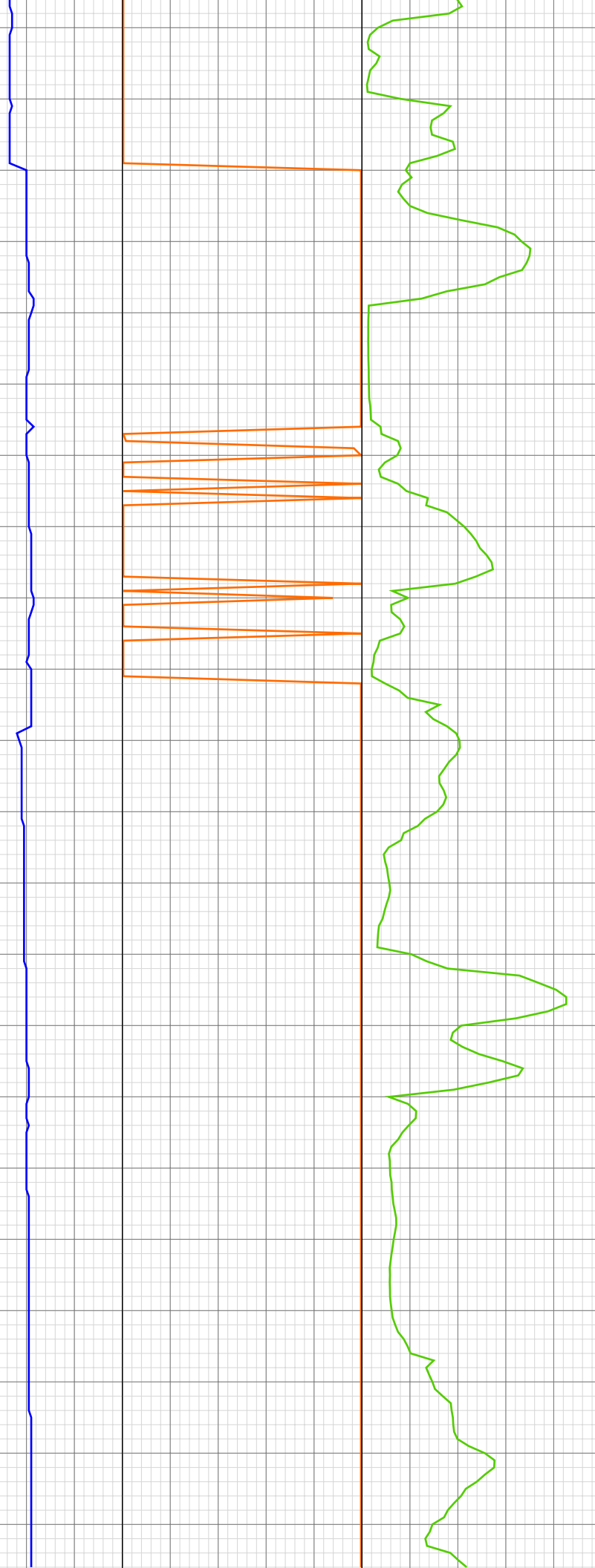
6868.01ft: MUD VIS 50.00
6868.01ft: MUD WEIGHT 10.00

6881.99ft: 008TGAS-Check dryer
cable (rig air)
6881.99ft: ZDIFF from DHC
6882.05ft: Connection at 6881.4
6885.01ft: IN TALLY: HOLE DEPTH
SET TO 6881.5
6885.01ft: SLIDING

6892.49ft: SURVEY @ 6836 INC 2.2
AZI 227.0

6899.02ft: ZDiffPressure from
SideKick sk-06-03-3103

07:40 6920
08:07 6930
08:25 6940
08:30 6950
08:44 6960
08:49 6970
09:04 6980
09:14 6990
09:23 7000
09:39 7010
09:51 7020
09:56 7030
10:03 7040
10:07 7050
10:17 7060
10:42 7070
10:52 7080
10:56 7090
10:59 7100
11:02 7110
11:07 7120
11:11 7130



6923.00ft: HGAS_021: LOCATION1
High LEL Alarm
6923.82ft: HGAS_004: Horn Muted
6924.02ft: HGAS_024: LOCATION2
High LEL Alarm
6924.02ft: HGAS_004: Horn Muted
6924.21ft: HGAS_023: LOCATION2
Low LEL Alarm

6938.98ft: ROTATING
6939.01ft: ZDIFF from DHC

6957.74ft: ZDiffPressure from
SideKick sk-06-03-3103

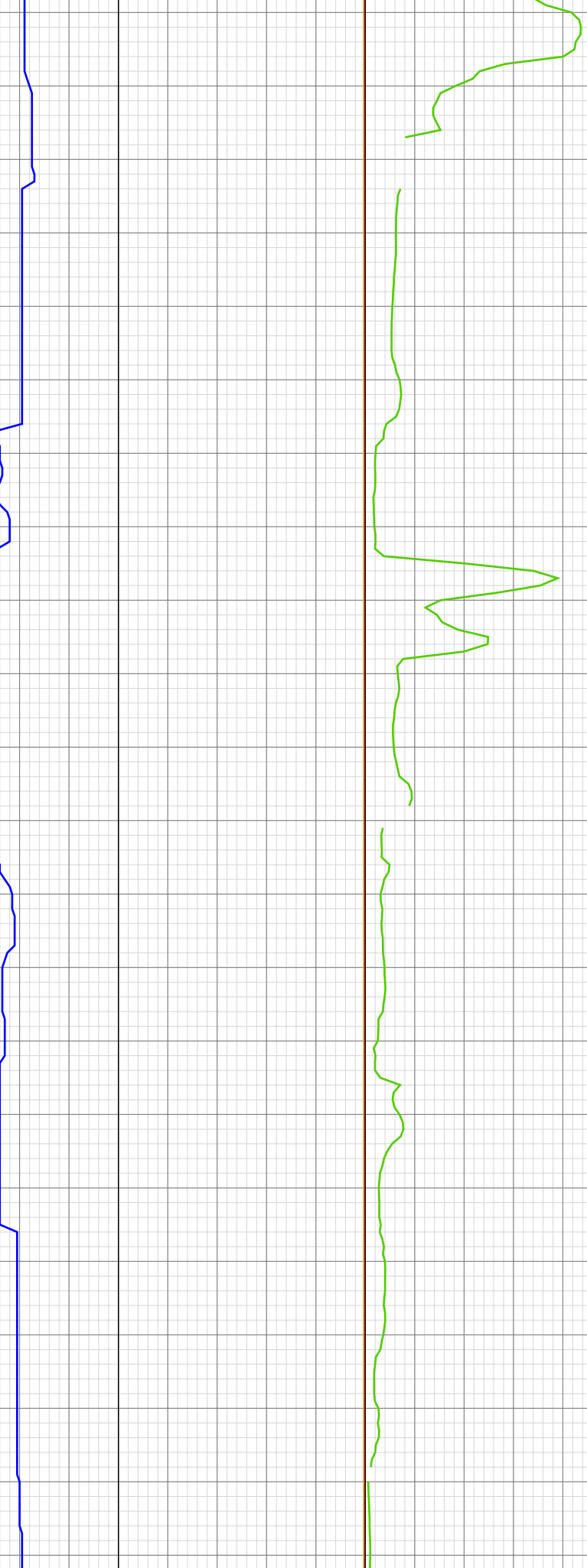
6975.00ft: ZDiffPressure from
SideKick sk-06-03-3103
6975.30ft: Connection at 6973.1
6979.00ft: MUD VIS 53.00
6979.00ft: MUD WEIGHT 10.00
6979.49ft: SURVEY @ 6928 INC 1.0
AZI 261.9
6983.37ft: SLIDING

7011.55ft: ROTATING

7069.00ft: ZWOB from DHC
7069.39ft: BOP DRILL
7069.39ft: Connection at 7064.7
7069.39ft: ROTATING
7069.39ft: SURVEY @ 7019 INC 1.8
AZI .6 TVD 6873.82

7131.99ft: MUD VIS 49.00
7131.99ft: MUD WEIGHT 10.00

11:21 7140
11:27 7150
11:36 7160
11:55 7170
11:57 7180
12:02 7190
12:14 7200
12:31 7210
12:54 7220
13:13 7230
13:19 7240
13:31 7250
13:57 7260
14:06 7270
14:16 7280
14:27 7290
14:36 7300
14:51 7310
15:00 7320
15:14 7330
15:36 7340
15:46 7350



7156.56ft: Connection at 7156.5
7156.56ft: ROTATING SURVEY @
7111 INC 1.9 AZI 338.6 TVD 6965.77
7156.56ft: ZDIFF from DHC

7162.99ft: IN TALLY: HOLE DEPTH
SET TO 7156.5

7195.01ft: ZDiffPressure from
SideKick sk-06-03-3103
7195.01ft: ZWOB from SideKick
sk-06-03-3103
7196.00ft: SLOW DOWN FOR
FORMATION TOP

7208.99ft: 021TGAS 05121646
SWO.28 HW25.00 - 28 days on
7208.99ft: 008TGAS-Check dryer
cable (rig air)
7212.01ft: ZDiffPressure from
SideKick sk-06-03-3103

7248.00ft: IN TALLY: HOLE DEPTH
SET TO 7248.0
7248.00ft: ZDIFF from DHC
7248.10ft: ROTATING Connection at
7248.0
7248.10ft: SURVEY @ 7203 INC 1.5
AZI 335.5 TVD 7057.73
7254.99ft: ZDIFF from DHC
7255.48ft: P/U PUMPS, ROTARY
AND WEIGHT

7302.99ft: MUD WEIGHT 10.00
7303.18ft: MUD VIS 50.00
7305.68ft: ZDIFF from DHC
7339.01ft: IN TALLY: HOLE DEPTH
SET TO 7339.5
7339.01ft: ZDIFF from DHC
7339.57ft: Connection at 7339.5
7339.57ft: SURVEY @ 7294 INC 1.7
AZI 327 TVD 7148.70 ROTATING
7339.57ft: ZDIFF from DHC
7339.57ft: PUMP SWEEP
7364.01ft: ZERO ALL PUMPS from
SideKick sk-06-03-3103
7364.01ft: 008TGAS-Check dryer
cable (rig air)
7364.99ft: SURVEY @ 7315 INC 1.9
AZI 339.6 TVD 7174.69
7364.99ft: CIRCULATE PUMP
SWEEP
7364.99ft: FLOW CHECK
7364.99ft: NO FLOW PUMP PILL
7364.99ft: FLOW CHECK
7364.99ft: NO FLOW
7364.99ft: FILL PIPE
7364.99ft: FILL PIPE REAM TIGHT
SPOT
7364.99ft: FILL PIPE
7364.99ft: FILL PIPE WASH TO
BOTTOM
7364.99ft: 008TGAS-Check dryer
cable (rig air)
7364.99ft: 008TGAS-Check dryer
cable (rig air)
7364.99ft: ZERO ALL PUMPS from
SideKick sk-06-03-3103
7364.99ft: BIT DEPTH CHANGED TO

15:55 7360
22:57 7370
22:57 7380
22:57 7390
22:58 7400
22:58 7410
22:59 7420
7430
7440



2615.0 FEET
7364.99ft: BIT DEPTH CHANGED TO 4142.0 FEET
7364.99ft: ZERO ALL PUMPS from SideKick sk-06-03-3103
7364.99ft: 021TGAS 05121646 SW0.28 HW25.00 - 29 days on 7364.99ft: 008TGAS-Check dryer cable (rig air)
7364.99ft: BIT DEPTH CHANGED TO 6238.0 FEET
7364.99ft: ZERO ALL PUMPS from SideKick sk-06-03-3103
7364.99ft: BIT DEPTH CHANGED TO 7313.0 FEET
7364.99ft: ZERO ALL PUMPS from SideKick sk-06-03-3103
7364.99ft: MUD VIS 45.00
7364.99ft: MUD WEIGHT 10.30
7364.99ft: HGAS_005: System Test Performed: No Faults Detected
7364.99ft: TRANSFERRED 50.00
7364.99ft: 008TGAS-Check dryer cable (rig air)
7365.26ft: FLOW CHECK
7365.26ft: NO FLOW
7365.26ft: PUMP PILL
7365.26ft: BLOW DOWN KELLY
7365.26ft: FLOW CHECK
7365.26ft: NO FLOW
7365.26ft: PULL ROT HEAD
7365.26ft: RUBBER BREAK OFF X/O LD 1 JNT DP
7365.26ft: LD DIRECTIONAL TOOLS
7365.26ft: DRAIN MOTOR
7365.26ft: BREAK BIT
7365.26ft: PULL WEAR BUSHING
7365.26ft: CIRCULATE
7365.26ft: INSTALL STATIC HEAD CIRCULATE
7365.26ft: CIRCULATE
7365.26ft: WASH DOWN LAST JOINTS
7365.26ft: CIRCULATE
7431.00ft: ZERO ALL PUMPS from SideKick sk-06-03-3103
7431.00ft: HOLE DEPTH CHANGED TO 7365.0 FEET