

T5N, R91W, 6th. P.M.

SWEPI LP

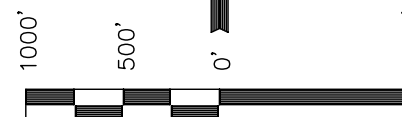
Well location, CASTOR GULCH #1-21, located as shown in Lot 2 of Section 21, T5N, R91W, 6th. P.M., Moffat County, Colorado.

### BASIS OF ELEVATION

SPOT ELEVATION AT THE NORTHEAST CORNER OF SECTION 31, T5N, R90W, 6th P.M. TAKEN FROM THE HAMILTON QUADRANGLE, COLORADO, MOFFAT COUNTY, 7.5 MINUTE QUAD (TOPOGRAPHIC MAP) PUBLISHED BY THE UNITED STATES DEPARTMENT OF THE INTERIOR, GEOLOGICAL SURVEY. SAID ELEVATION IS MARKED AS BEING 6664 FEET.

### BASIS OF BEARINGS

BASIS OF BEARINGS IS A G.P.S. OBSERVATION.



SCALE

### CERTIFICATE

THIS IS TO CERTIFY THAT THE ABOVE PLAT WAS PREPARED FROM FIELD NOTES OF ACTUAL SURVEYS MADE BY ME OR UNDER MY SUPERVISION AND THAT THE SAME ARE TRUE AND CORRECT TO THE BEST OF MY KNOWLEDGE AND BELIEF.

REGISTERED LAND SURVEYOR  
REGISTRATION NO. 17492  
STATE OF COLORADO  
08-01-11

**UINTAH ENGINEERING & LAND SURVEYING**  
85 SOUTH 200 EAST - VERNAL, UTAH 84078  
(435) 789-1017

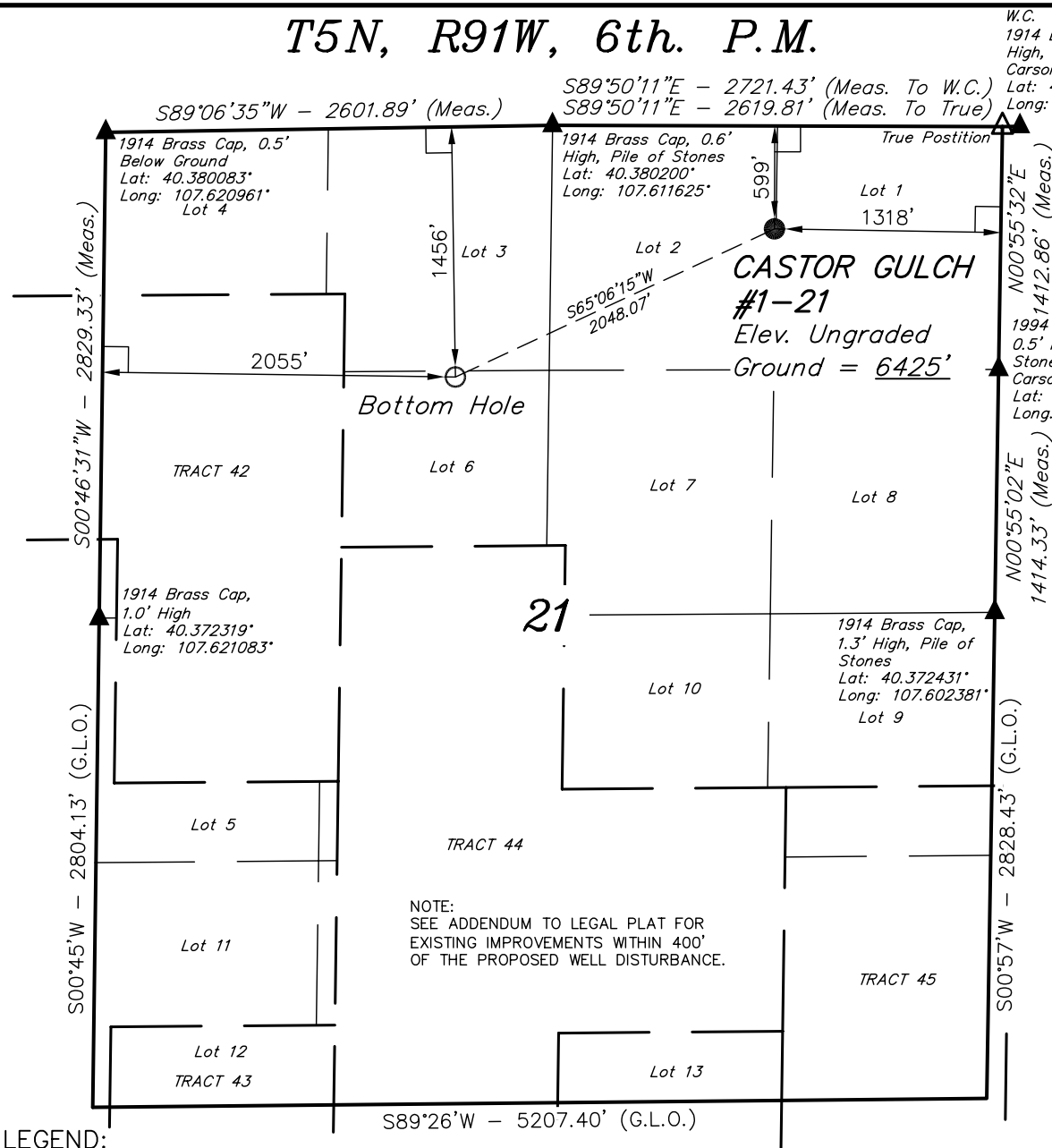
### LEGEND:

- └─┘ = 90° SYMBOL
- = PROPOSED WELL HEAD.
- ▲ = SECTION CORNERS LOCATED
- △ = SECTION CORNERS RE-ESTABLISHED.  
(Not Set on Ground.)

PDOP = 2.3

NAD 83 (TARGET BOTTOM HOLE)	NAD 83 (SURFACE LOCATION)
LATITUDE = 40°22'34.25" (40.376181)	LATITUDE = 40°22'42.78" (40.378550)
LONGITUDE = 107°36'49.14" (107.613650)	LONGITUDE = 107°36'25.15" (107.606986)
NAD 27 (TARGET BOTTOM HOLE)	NAD 27 (SURFACE LOCATION)
LATITUDE = 40°22'34.35" (40.376208)	LATITUDE = 40°22'42.88" (40.378578)
LONGITUDE = 107°36'46.90" (107.613028)	LONGITUDE = 107°36'22.91" (107.606364)

SCALE 1" = 1000'	DATE SURVEYED: 06-23-11	DATE DRAWN: 06-28-11
PARTY B.H. N.F. J.I.	REFERENCES G.L.O. PLAT	
WEATHER WARM	FILE SWEPI LP	

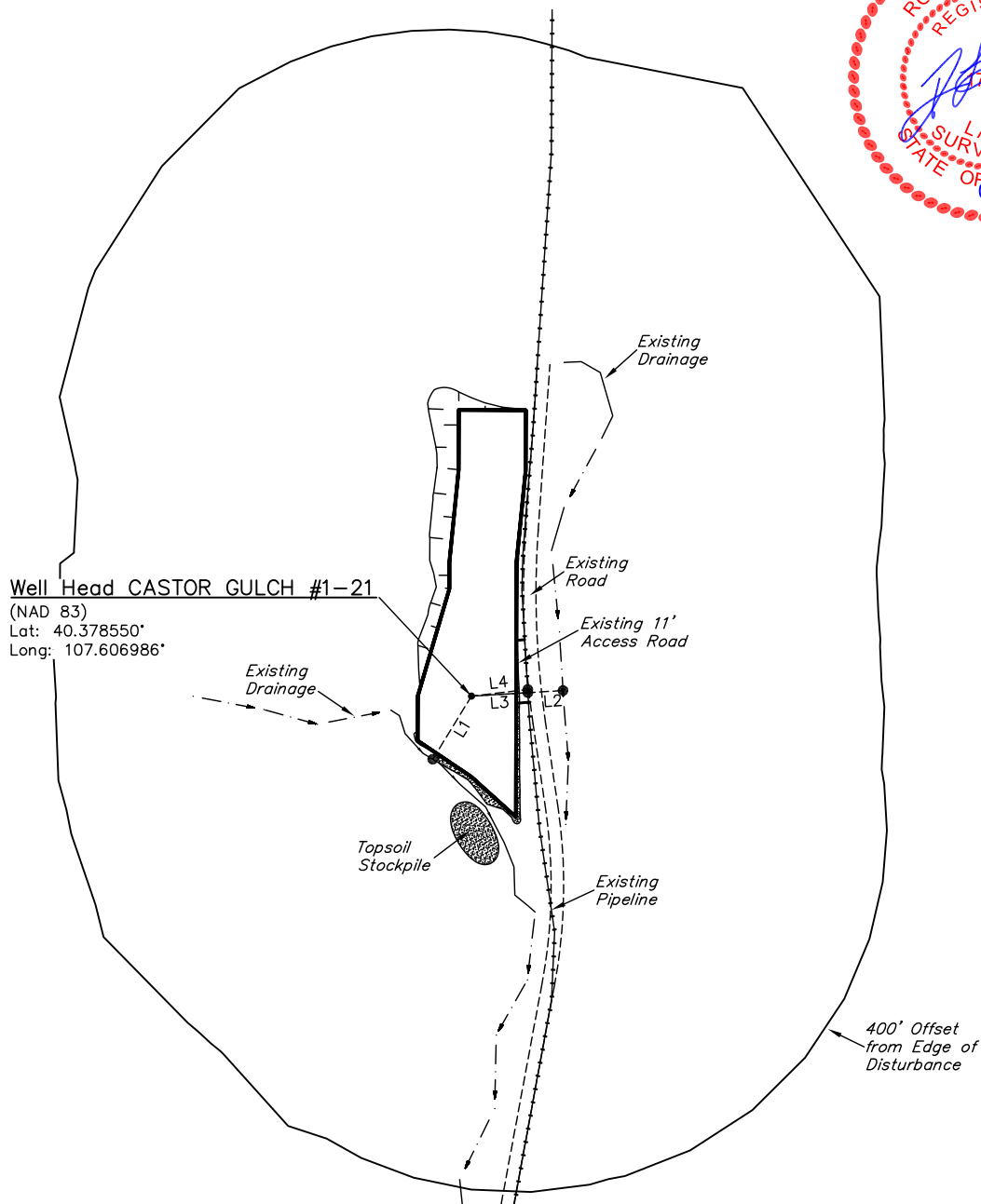
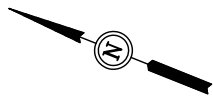


# SWEPI LP

## ADDENDUM TO LEGAL PLAT FOR

CASTOR GULCH #1-21  
SECTION 21, T5N, R91W, 6th. P.M.  
599' FNL 1318' FEL

SCALE: 1" = 200'  
DATE: 07-27-11  
DRAWN BY: C.J.C.



LINE TABLE		
LINE	LENGTH	DIRECTION
L1	82.76'	N80°20'35"W
L2	102.54'	S25°22'28"E
L3	63.17'	S25°26'10"E
L4	63.44'	S28°39'15"E